

Columbia River Gorge National Scenic Area Interactive Recreation Map

2014 Esri International User Conference
July 14-18 | San Diego, California

Leo Chan and Zahid Chaudhry
Data Resource Management
USDA Forest Service, Pacific Northwest Region



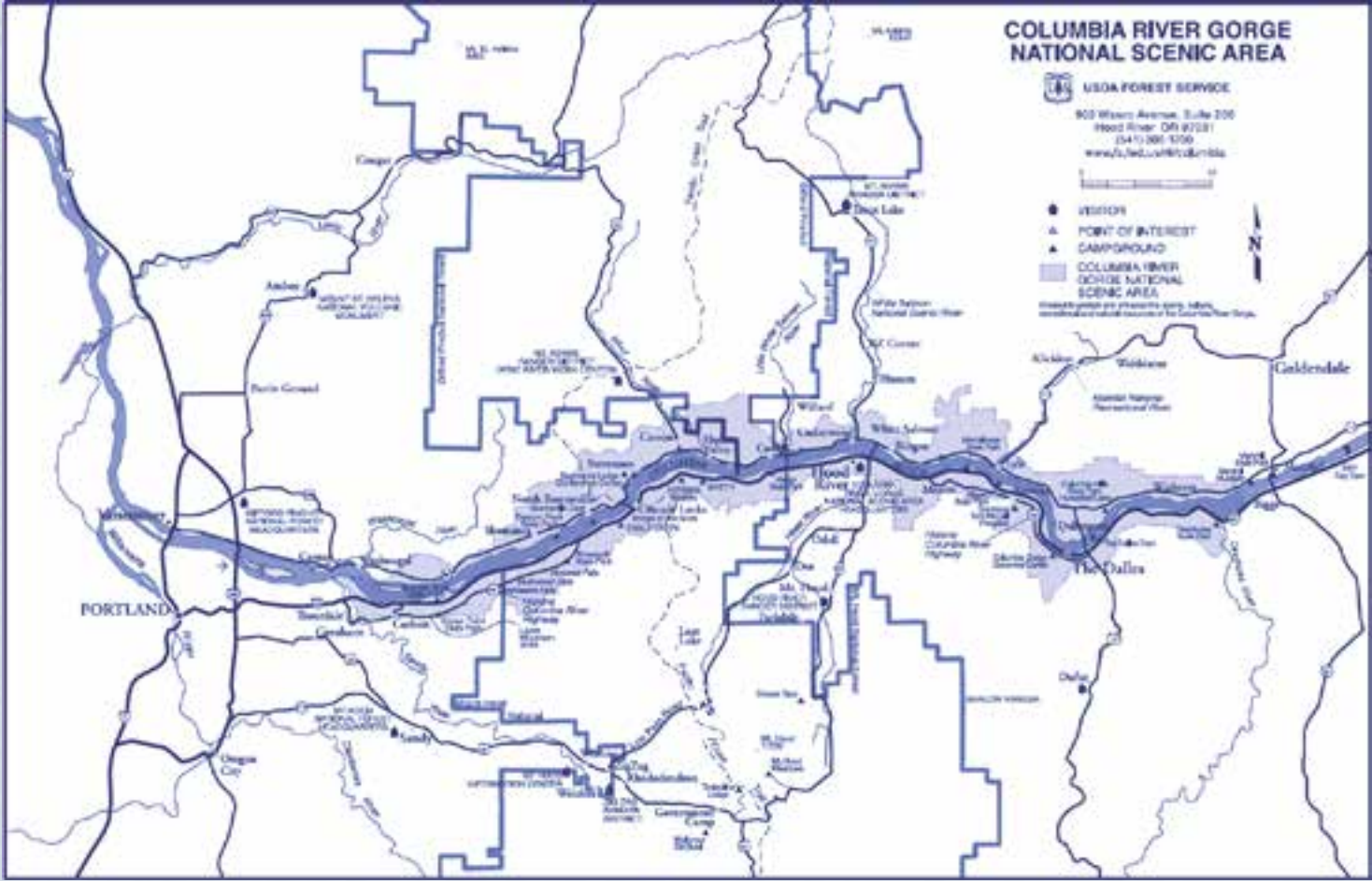
for the greatest good

Agenda

- About the Columbia River Gorge National Scenic Area (CRGNSA)
- Current Workflow
- Our Approach
- Data/Information
- Putting it Together
- Future Plans
- Summary
- Q&A



Columbia River Gorge National Scenic Area



for the greatest good

Columbia River Gorge National Scenic Area

- Created to protect and enhance the scenic, cultural, recreational and natural resources of the Columbia River Gorge.
- 85 miles long!!
- 13 cities, 6 counties, and recognized tribes.
- 40 waterfalls on the Oregon side, and 13 waterfalls on the Washington side (*Approximate numbers*).
- Approximately 2 million visits each year!!!



<http://media.fox.com/always/images/park-active-overview/columbia-river-gorge-nra.jpg>



for the greatest good

Current Workflow

- The Columbia Gorge Interagency Recreation Strategy Team
 - Traditional methods of relying on paper maps
 - Multiple agencies and levels of government involved
 - Difficult checking status of existing recreation facilities
- Behind in Technology....



http://wanderlustthinking.files.wordpress.com/2013/09/turtle_racing1.jpg



for the greatest good

Our Approach

- Collaboration between partners
- Tool for long term planning for recreation development
- An “one-stop shopping” for recreation information in the gorge
- ArcGIS Online
 - Pilot Project
 - Web Application
- ArcGIS Server



for the greatest good

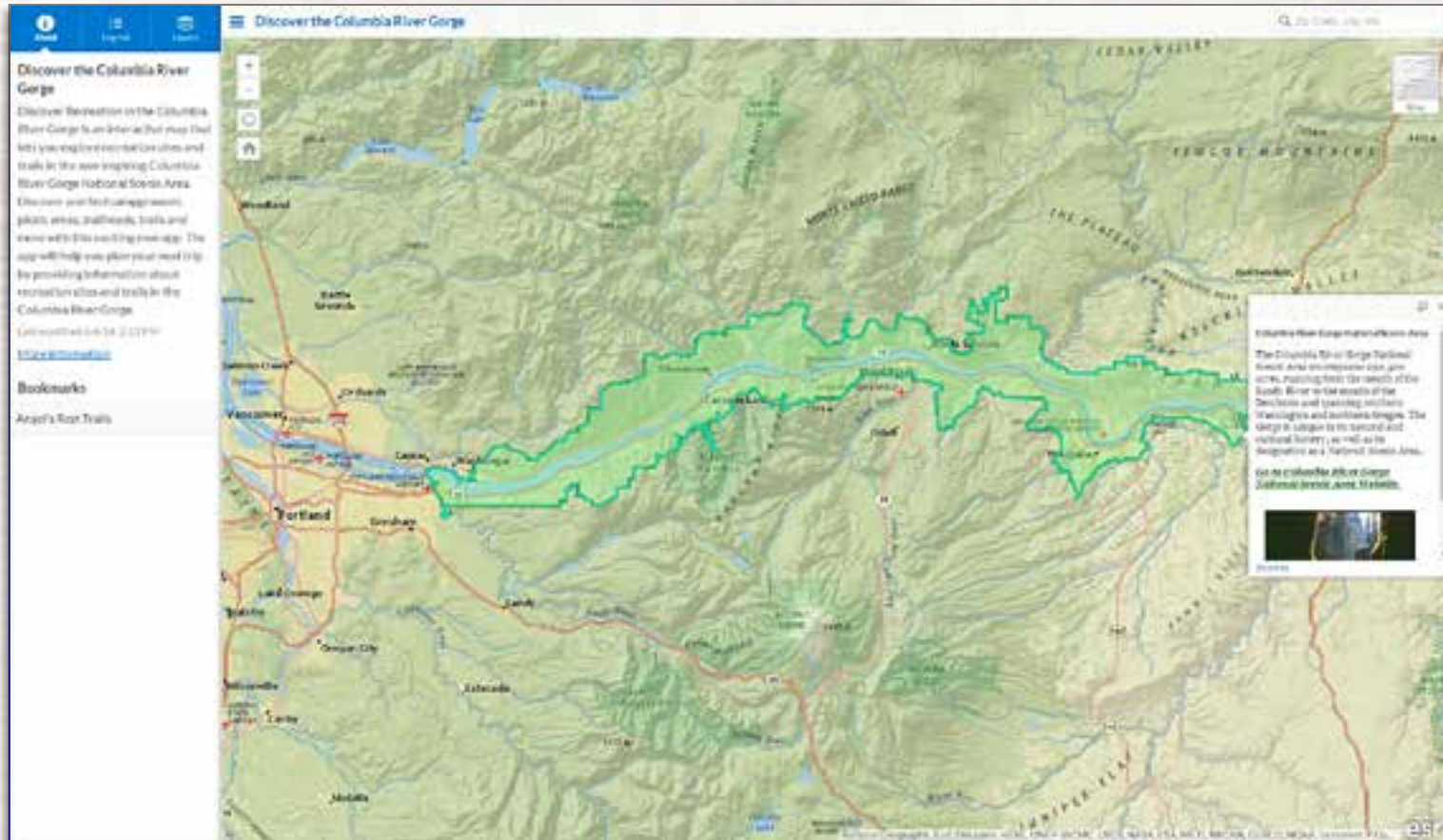
Data/Information

- Excel spreadsheet sent out to multiple agencies

1	Basic Site Information								
2	Basic Site Information				Use	Facility Condition			
3	Site Name	Location Lat/Long	Site Type	Development Scale	Operator	Occupancy by Season of Use	Deferred Maintenance	Current Replacement Value	Facility Condition Index
4			see business rules	see business rules	what agency operates the site	see business rules	see business rules	see business rules	see business rules
5									
6									
7									
8									
9									
10									
11									
12									
13									

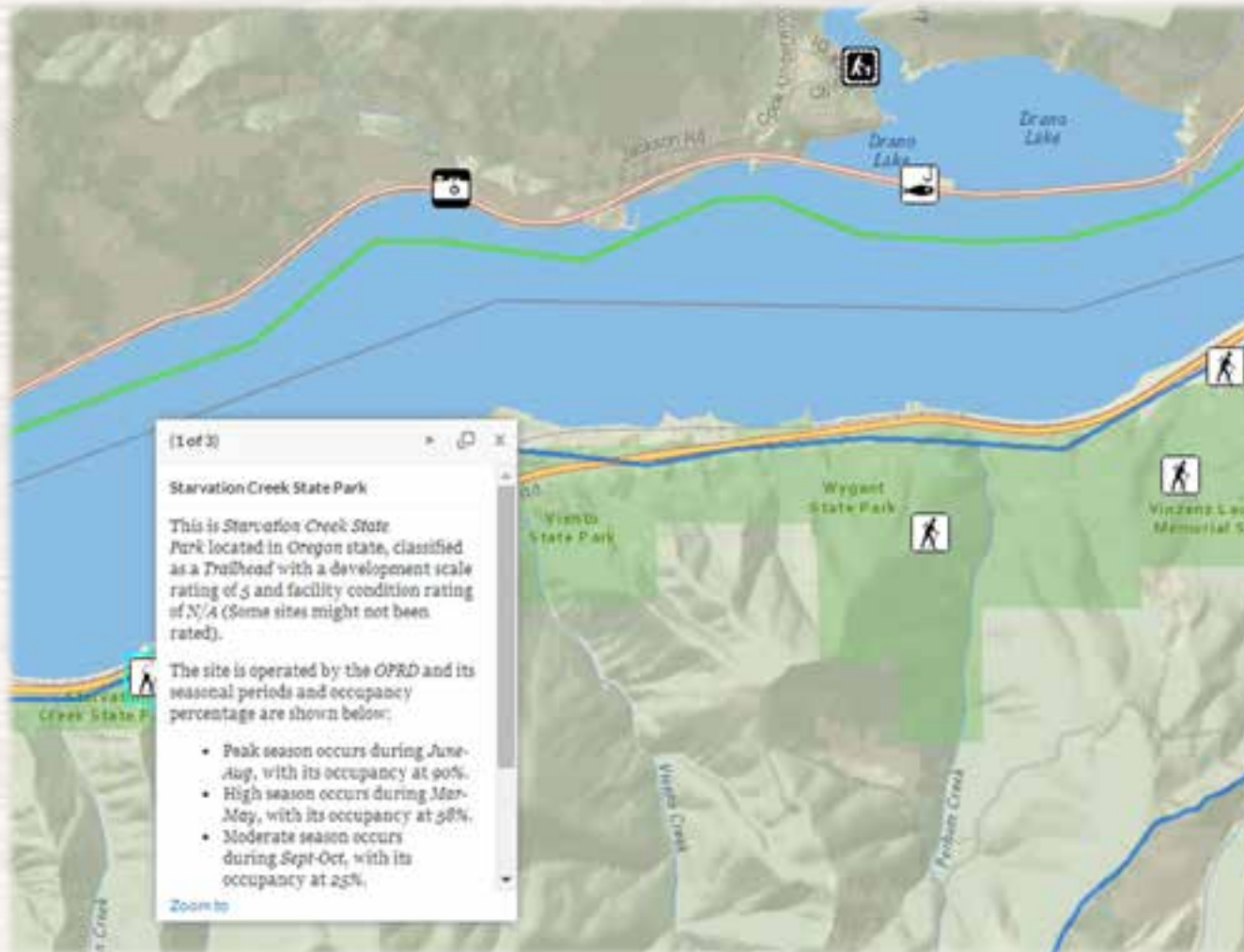


Putting It Together



for the greatest good

Putting It Together



Future Plans

[1 of 2]

Angel's Rest (Upper)

Area Status: [Open](#)

Starting in a hem-fir forest, the trail climbs uphill for 0.6 mile before reaching the top of Cooney Falls, a 130 to 175-foot horsetail waterfall, and the footbridge crossing the creek. Continuing on, the trail begins to switchback uphill for 1.6 mi.

At a Glance

- Fees: No Fee
- Usage: Heavy
- Restrictions: Motor vehicles are prohibited. Fires not allowed within 200 feet of trail. Dogs must be on leash. No bikes.
- Closest Town: Troutdale, OR
- Water: No
- Restroom: No
- Operated By: Forest Service

Links to More Trail Information:

[Forest Service](#)
[Friends of the Columbia Gorge](#)
[Portland Hikers](#)
[Other Link](#)



Zoom to [Get Directions](#)



for the greatest good

Future Plans

- Editing capabilities through the web application from partners outside of the Forest Service
- Public comments in the application
- Map services for alerts and warnings

Alerts

 [Subscribe to this feed](#)



▶ **Bridge Restrictions in Place for Public Safety**

Date(s): Jan 31, 2012 - Sep 26, 2014

▶ **Scenic Area Campgrounds going to reservation system in 2015**

Date(s): May 29, 2014

▶ **Catherine Creek Arch Closure**

Area(s): Catherine Creek Day Use Area/Trailhead, Catherine Creek Trail #4400

Date(s): Feb 6, 2012

▶ **Theft in the Gorge**

Date(s): May 19, 2011



for the greatest good

Summary

- A More Modern Tool!
- Increases Collaboration
- Benefits the Public
- Providing Information
- This is Only a Start...
- **THANKS FOR YOUR TIME!**

