

# **ANIMAL EVACUATIONS DURING DISASTERS**

BY SANDI MITCHELL AND AMANDA WEAVER

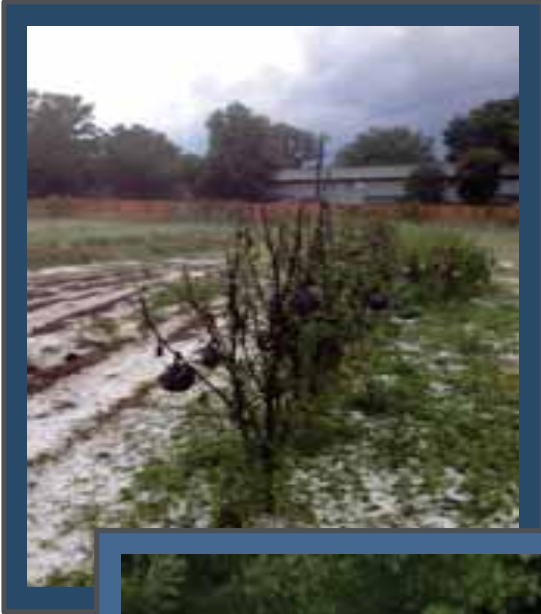
6/23/2014

CSU EXTENSION/PETAIDCOLORADO

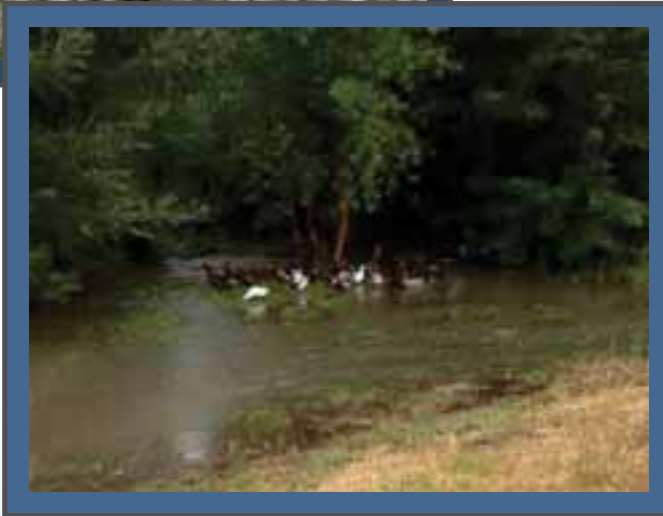
# Professional GIS Conversation To Personal GIS Problem Solving



# Initial Research of the Issue



- Ragan Adams, Coordinator, Veterinary Extension at Colorado State University
- Debrah Schnackenberg, Director of PetAid Disaster Services.  
PetAidColorado is a division of the office of Emergency Management in Colorado



# Initial Goals For Project

- Understand current public information about emergency animal evacuation.
- Focus on large domestic animals
  - Unique needs – where do you take your animals
  - Need an evacuation plan for all animals
- Consider/research the integration of GIS technologies for animal evacuation



# Research

- 
- County Animal Response Team (CART)
  - Lessons Learned from Katrina & CO fires
    - Efforts in other states
    - Future research
    - Key elements of a GIS solution
  - Surveyed counties within Colorado

# Comparison Of Evacuation Plans/Issues In Colorado Counties

- **Geography**
    - rural/suburban/urban
    - Mountainous
  - **Animal/Owner Types**
    - High value
    - Non-traditional
  - **Communication**
    - Between city/county offices
    - Between owners and govt.
  - **Unique situations**
    - Non-zoo sanctuaries
    - Tourist
- 
- A photograph of a rural landscape. In the foreground, a brown horse stands in a grassy field, partially obscured by a wire fence. In the background, there is a white barn with a dark roof, a utility pole, and some trees under a clear blue sky. The overall scene is a typical rural Colorado setting.

# Goals For Project

## Initial Ideas

- Understand current public information about animal evacuation
- Focus on large domestic animals
- Consider the integration of GIS technologies

## After County Comparison

- Encourage consistency between county response and public
- Better integration of available GIS data between animal control and other civil govt. offices
- Creation of a flexible and scaled GIS model

# Future Research

- Wildlife
- Public Awareness Campaigns
- Sensitive Information and Liability
- Pet Portals
  - Lost & Found Pets
- Mobile Command Center

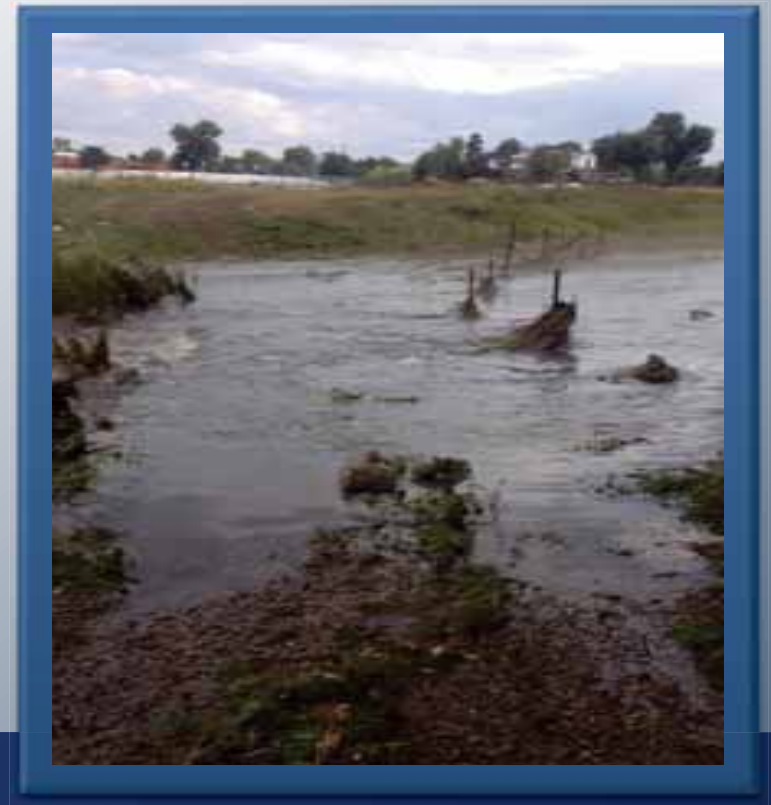


# Towards A Flexible GIS Model

Brief Structure



Ideas/Questions



# ANIMAL EVACUATIONS

## Resources

### PetAidColorado (CART)

<http://www.petaidcolorado.org/>

Jefferson, Gilpin, Boulder, Douglas, El Paso, Arapahoe Counties, CO –  
Animal Control/Sheriff – Emergency Management

### CSU Veterinary Extension

<http://veterinaryextension.colostate.edu/index.shtml>