

```
Sign On
System : S1019223
Subsystem : QINTER
Display : WVMC34S1

User : _____
Password : _____
Program/procedure : _____
Menu : _____
Current library : _____
```

A TALE OF TRIUMPH!

Connecting the Field, Office, and Green Screen

AS/400 HISTORY

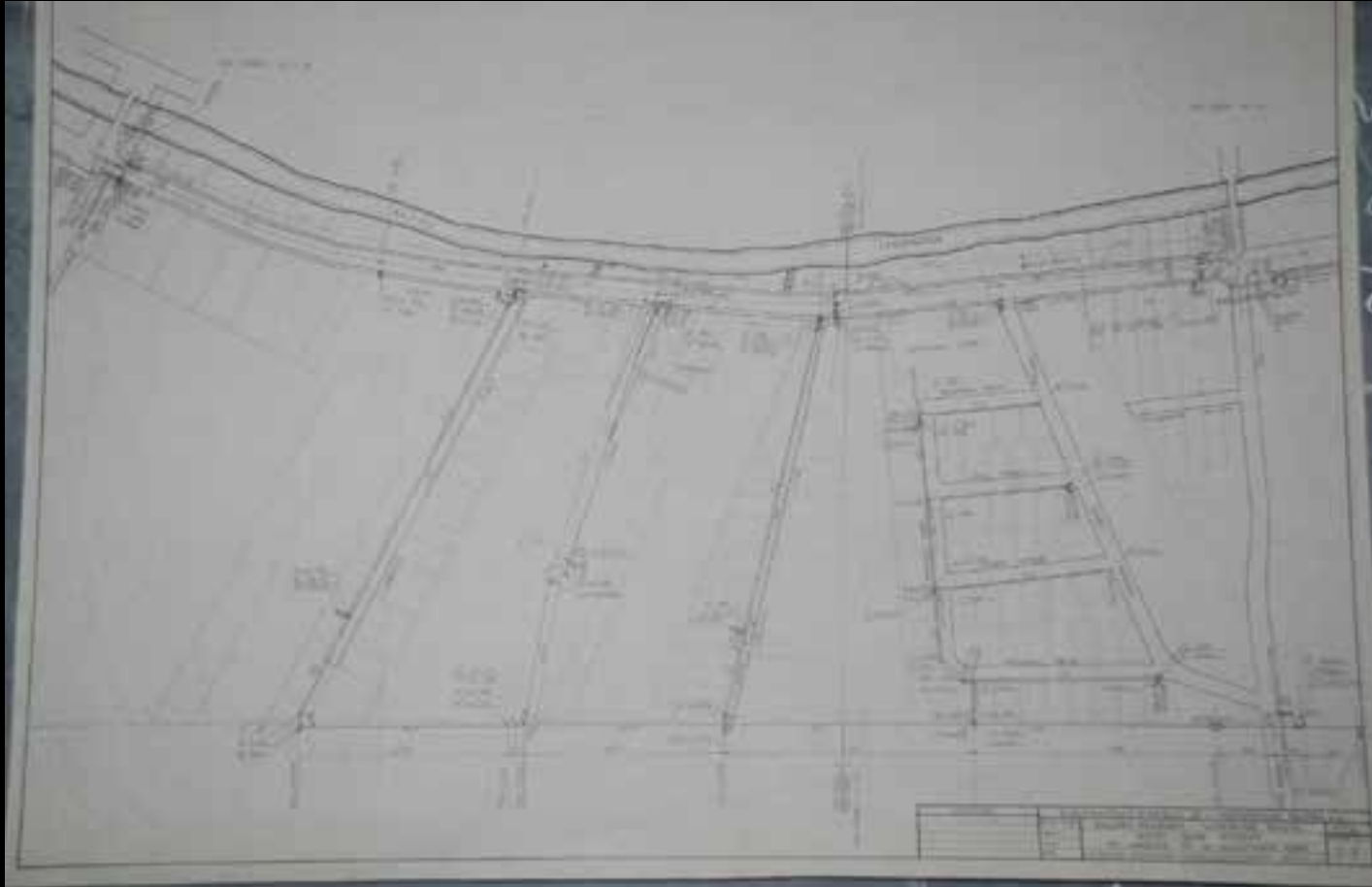
- INSTALLED IN THE EARLY 70'S
- MIDRANGE COMPUTER SYSTEM
- STILL RUNS SOFTWARE WRITTEN 30+ YEARS AGO
- HOUSES OUR CUSTOMER & ACCOUNTING DATA

MAP HISTORY

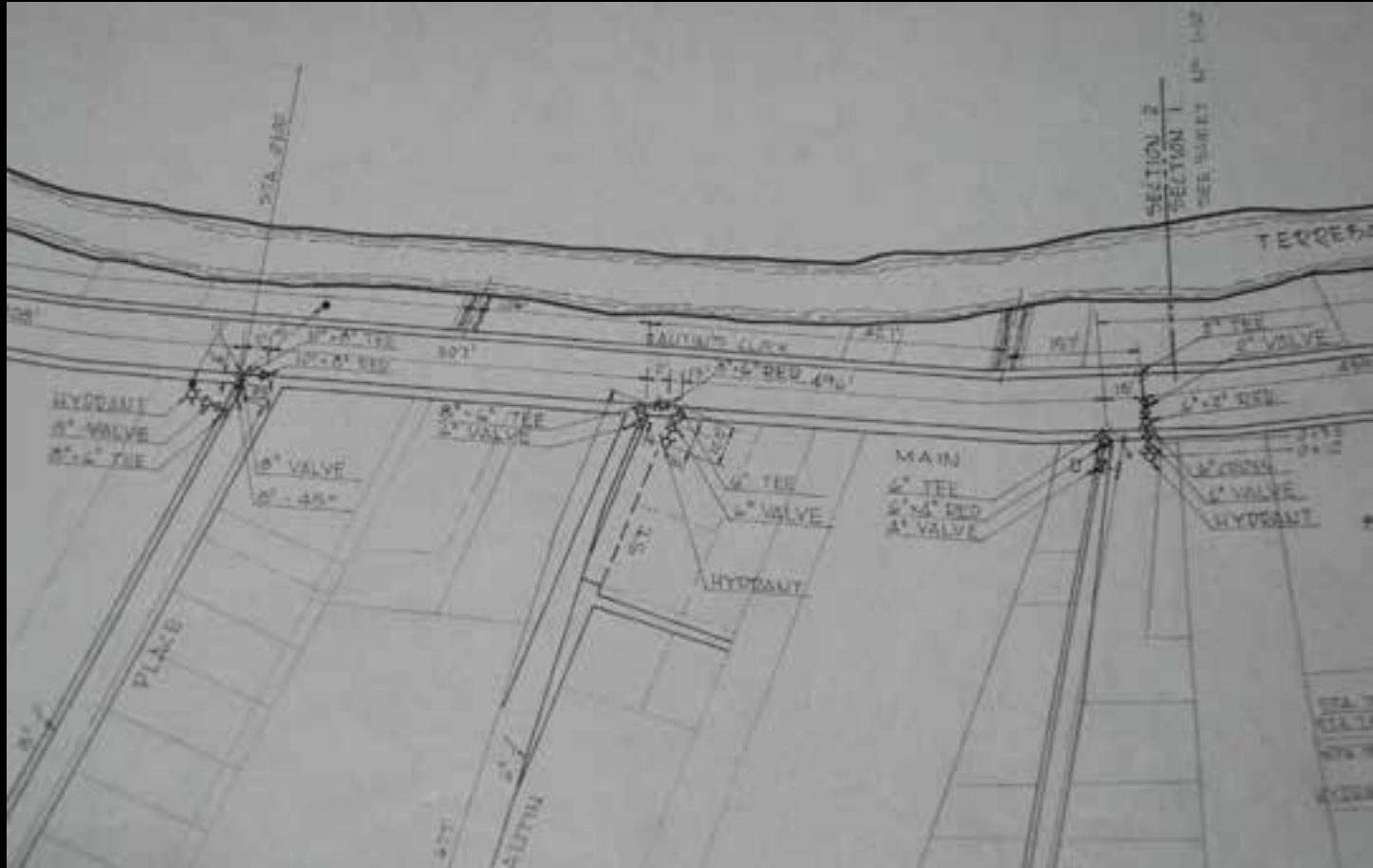
- PAPER MAPS
 - HAND DRAWN
 - OVER 200 (24" X 36") ROUTE MAPS
 - OVER 4000 (8-1/2" X 11") VALVE DETAIL SHEETS

PENCIL DRAWING ON VELLUM

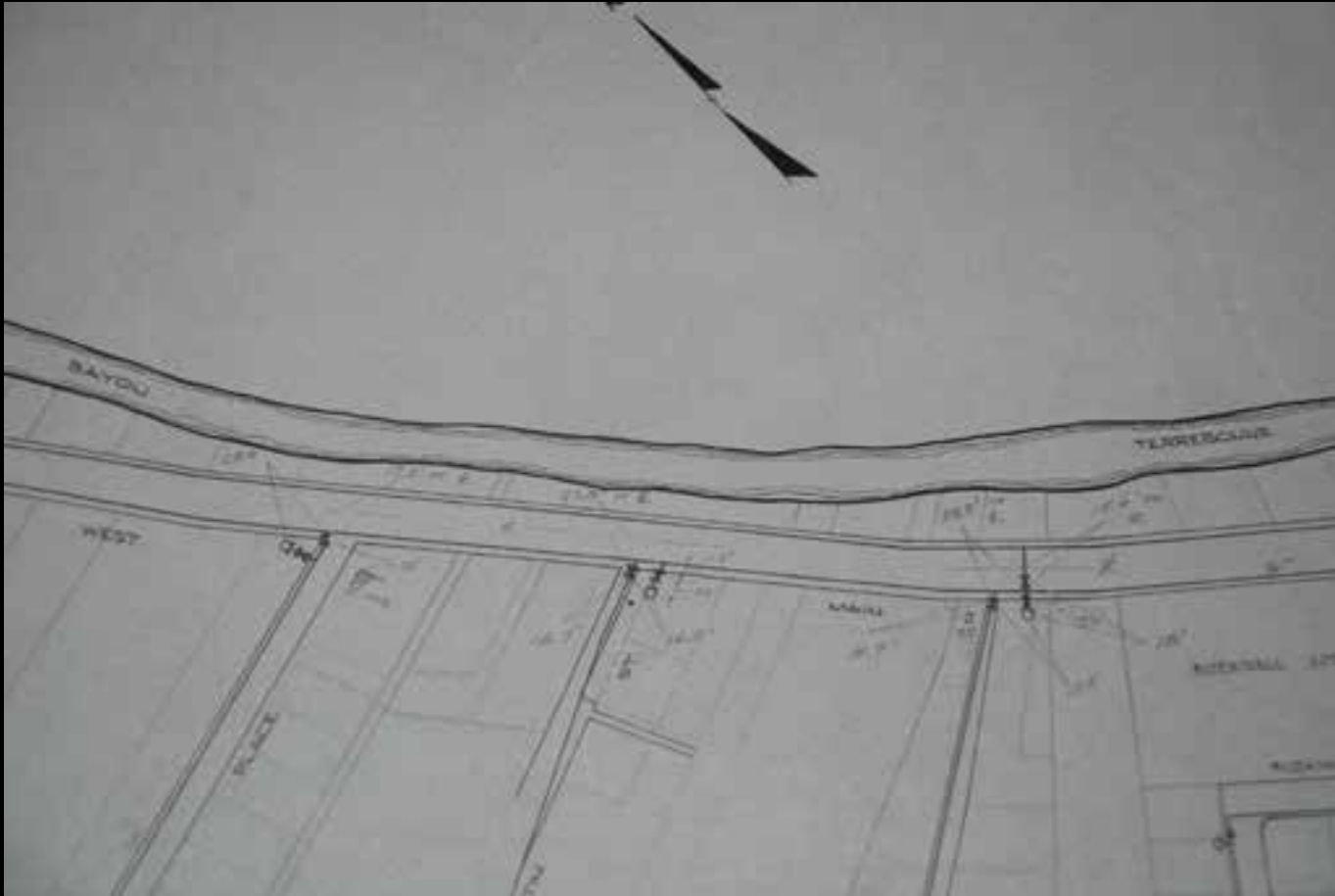
SCALE: 1" = 100'



PENCIL DRAWING W/FITTINGS



PENCIL DRAWING W/DIMS

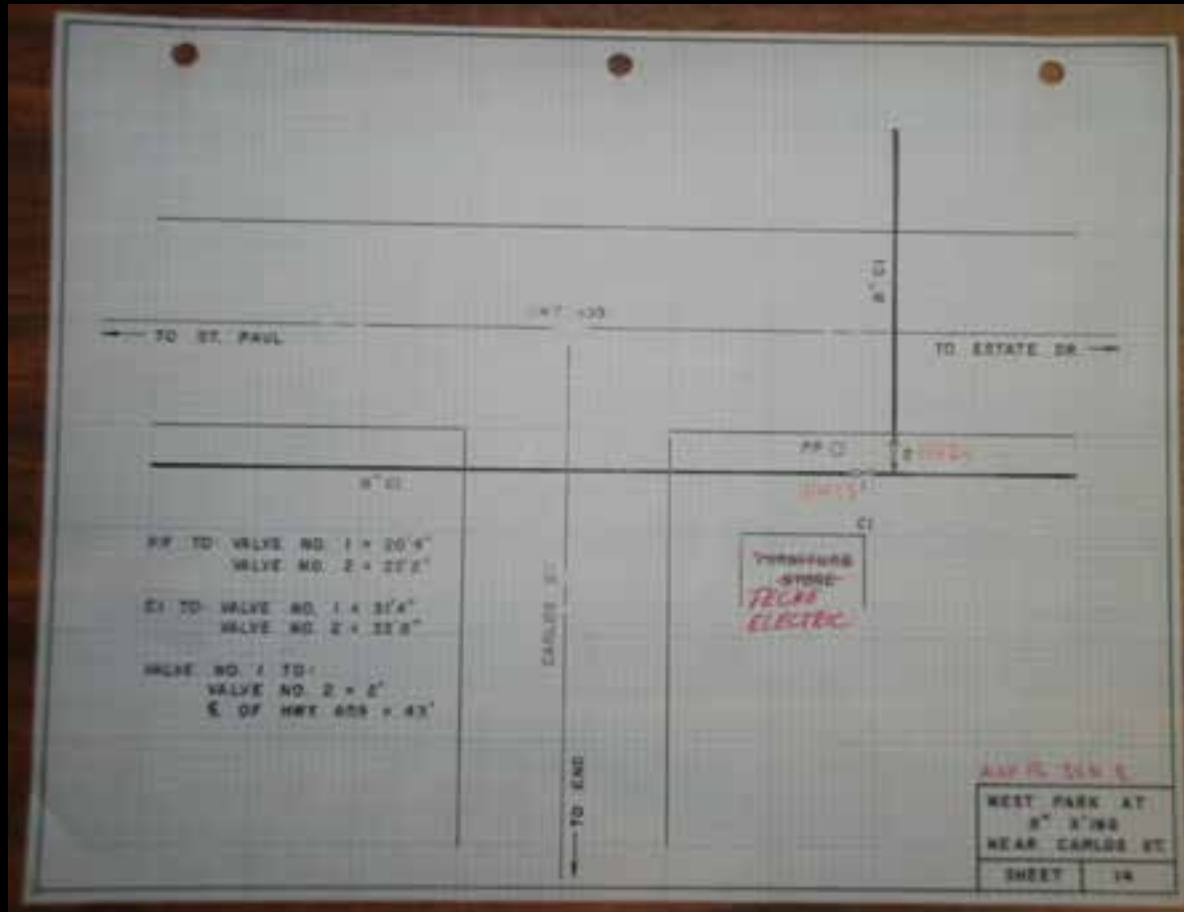


TRANSFERRED TO PLASTIC

SCALE: 1" = 200'



VALVE DETAIL ON PLASTIC NOT TO SCALE



MUSEUM PIECES



MAP HISTORY

- AUTOCAD
 - DIGITIZED PAPER ROUTE MAPS
 - REDRAW VALVE DETAIL SHEETS
 - DIFFICULT FOR MAPPING
 - LACKED A BASE MAP

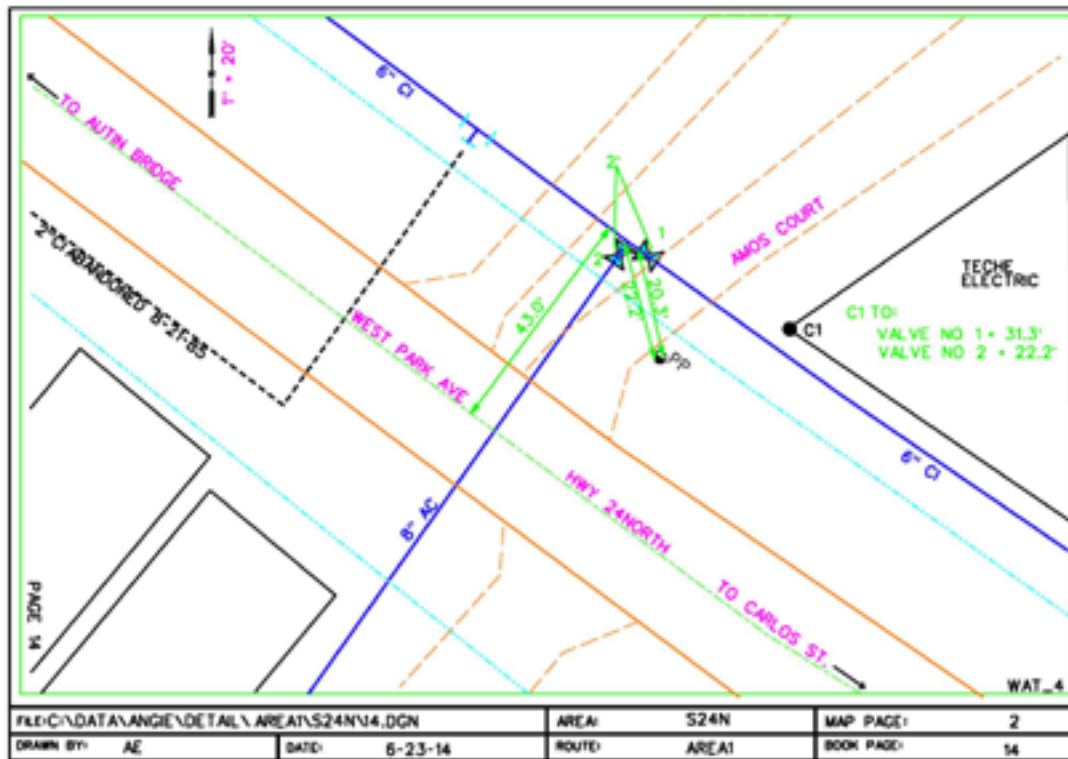
CAD ROUTE SHEET

PLOT SCALE: 1" = 200'



CAD VALVE DETAIL

PLOT SCALE: 1" = 20'



GIS INTRODUCTION

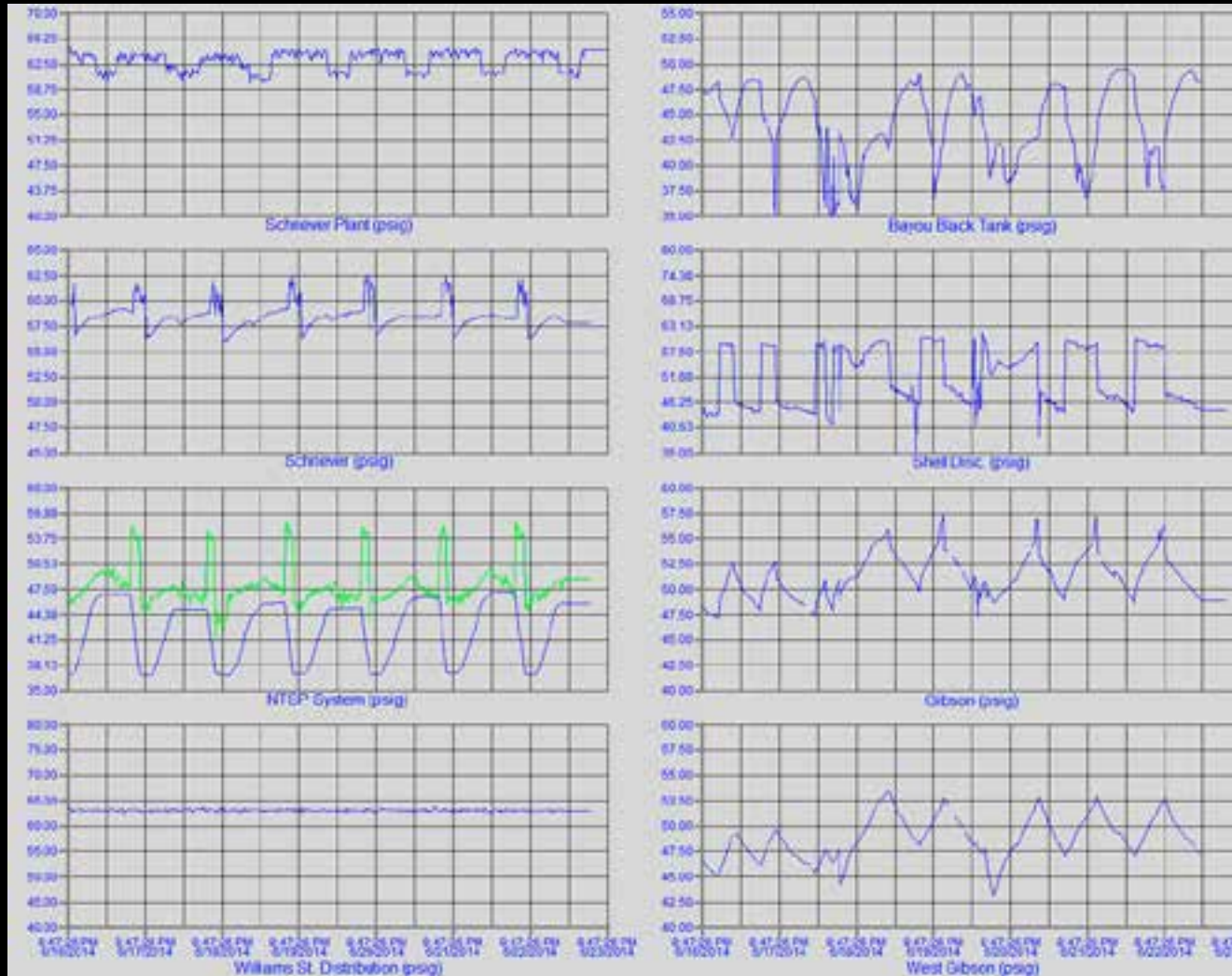
- INTRODUCED TO ARCVIEW IN THE LATE 80'S
- DESIGNED FOR MAPPING
 - INTELLIGENT
- ENTERPRISE GEODATABASE
 - ESRI'S ARCGIS SUITE
 - ARCFINHO
 - ARCEDITOR
 - ARCMAP
 - GIS LAB

TERREBONNE PARISH

- 2 SURFACE WATER TREATMENT PLANTS
- 4 RAW WATER PUMP STATIONS
- 4 GROUND STORAGE TANKS
- 10 PUMP STATIONS
- 1000 MILES OF PIPE
- 16 ELEVATED TANKS
- 2 STANDPIPES



SCADA



HYDRAULIC MODELING



TO THE FIELD

- SHARING DATA WITH FIELD OPERATIONS
- COLLECTING DATA FROM FIELD OPERATIONS
- WORKING SMARTER NOT HARDER

THE DASHBOARD

- AS/400
 - CUSTOMER DATA
- SCADA
 - REAL TIME DATA
- MODEL
 - CRITICALITY
 - WATER QUALITY
- GIS
 - ASSET MANAGEMENT

SEDARU SLIDES START HERE

MOVING FORWARD

- AUTOMATED DISPATCH
- SMART ROUTING
- REAL TIME REPORTING
- INFORMED DECISION MAKING