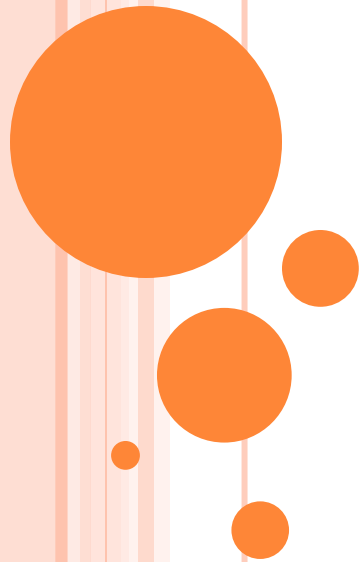


BIG DATA IN IMPORTANT PLACES: FROM ANALYSIS TO TECHNICAL REPORTING IN A SEAMLESS WEB-BASED ENVIRONMENT

Patrick Royer
ESRI USER CONFERENCE 2014



HANFORD NUCLEAR WASTE SITE – FROM SCIENTIST TO REGULATOR TO GOVERNMENT OFFICIALS IN SECONDS!

HANFORD NEWS

DOE to investigate PNNL beryllium protection

An investigation will look at possible shortcomings in the Pacific Northwest National Laboratory's program to protect workers from beryllium.

LATEST NEWS

Study finds continued safety culture problem at Hanford

A follow-up assessment of the safety culture at the Hanford vitrification plant found no significant improvement in employee perceptions despite two years of work to address issues.



HANFORD NEWS

Hanford workers report possible vapor odor in lab

Another Hanford worker was evaluated for possible exposure to chemical vapors Tuesday, this time after developing symptoms indoors at the 222-S Laboratory.

HANFORD NEWS

Officials: Stay the course on Hanford vapors until study done

Washington Gov. Jay Inslee supports the Hanford tank farm approach of allowing workers to opt for increased levels of personal protection such as different respirators to guard against chemical vapors until a new independent assessment is completed.



HANFORD NEWS

Safety in steel: Hanford workers' health monitored in room made from battleship



Savannah River lab to study vapors at Hanford



Gov pressed to take action to protect Hanford workers



25 years on at America's most contaminated nuclear waste site

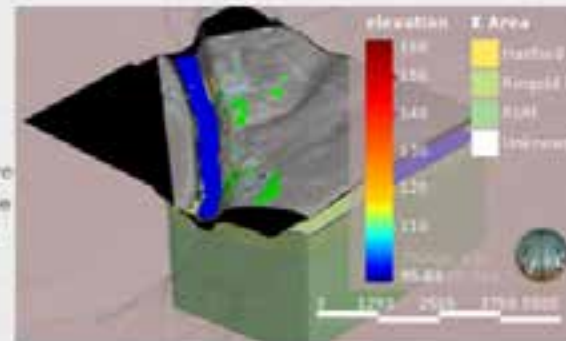
By Taylor Kate Brown
BBC News, Washington DC



Geospatial viewer and analysis suite

Updated Feb 28 2014

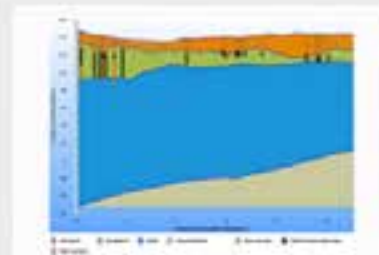
Welcome to the Intera geospatial portal and analysis toolbox. AS OF FEB 28 2014 This product and all bundled applications have been tested and are now in production phase. We don't anticipate any "show stoppers" with respect to overall performance and run times. While we have not been able to accommodate every individual request we have made significant effort to integrate important functionality components and data sources.



Customized time-series chart application is built on HIVE database used to map and query data, and create publication quality figures.



Click for a Video Tutorial



Customized cross-sections built via the fly with query tools underlying geology and borehole contacts.



Click here for video tutorial



Customized viewers for streaming data connect, querying and exporting data, and viewing historical trends.



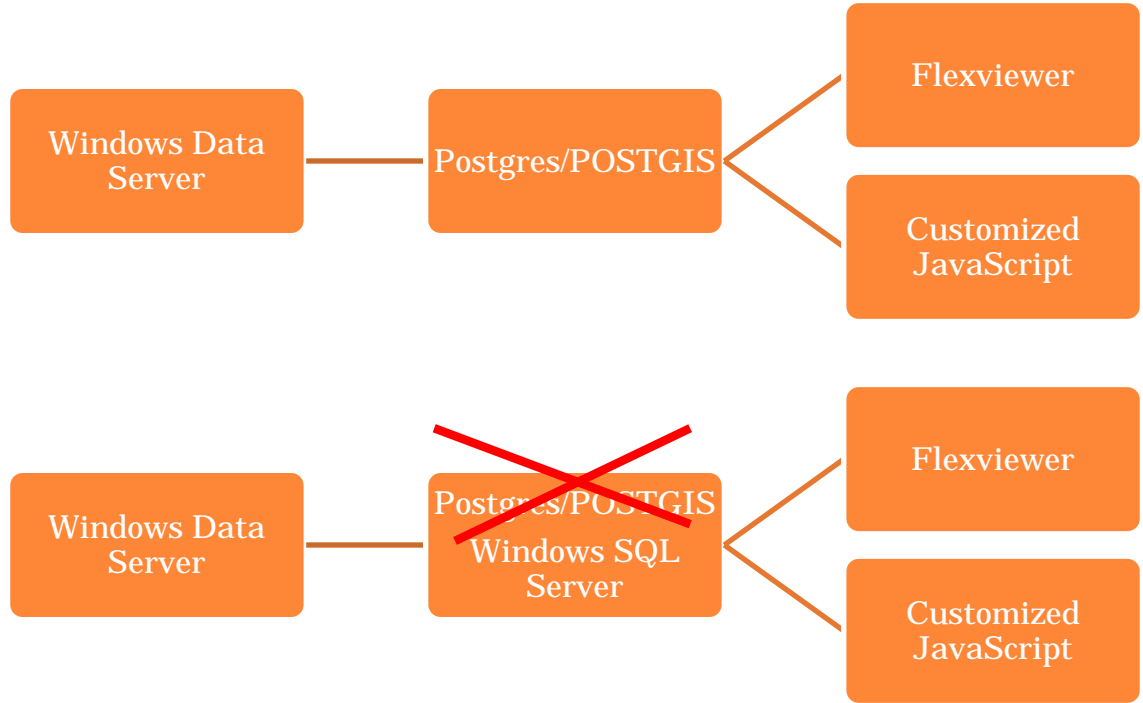
Click to enter flexviewers



APPLICATION BUILD ~ LIFE BEGINS ON EC2 & GOES THROUGH RIGOROUS SECURITY REVIEW BEFORE MIGRATING TO TEST, THEN PRODUCTION .GOV DOMAIN



A SAD FAREWELL TO SOME OF OUR FINEST OPEN SOURCE FRIENDS



THANK YOU

