

The benefits of using GIS for Fiscal Management in Rio de Janeiro City

José Augusto da Silva Machado



The benefits of using GIS for Fiscal Management in Rio de Janeiro City

Challenges

Author:

José Augusto da
Silva Machado

Integration between technical real state registration of the city, the tax bases of the Fiscal Intelligence, economic, patrimonial system of licensing and urban geographic information of the city.



CHALLENGE
CHALLENGE
CHALLENGE
CHALLENGE
CHALLENGE
CHALLENGE
CHALLENGE

The benefits of using GIS for Fiscal Management in Rio de Janeiro City



The benefits of using GIS for Fiscal Management in Rio de Janeiro City

Solution

Author:

José Augusto da
Silva Machado

- ✓ Applications that integrate different departments of taxation.
- ✓ Creating intelligent spatial databases.
- ✓ Viewing basemaps united to orthophotos with several different periods.
- ✓ Searches for Geocode by attributes or spatial data, allowing analysis of results in statistical, graphical, thematic map or heat mode.
- ✓ Archiving attachments such as photos, documents and projects.
- ✓ BI integration.
- ✓ Map update for user interaction.

The benefits of using GIS for Fiscal Management in Rio de Janeiro City

Author:

José Augusto da
Silva Machado



The benefits of using GIS for Fiscal Management in Rio de Janeiro City

Author:

José Augusto da
Silva Machado



The benefits of using GIS for Fiscal Management in Rio de Janeiro City

Author:

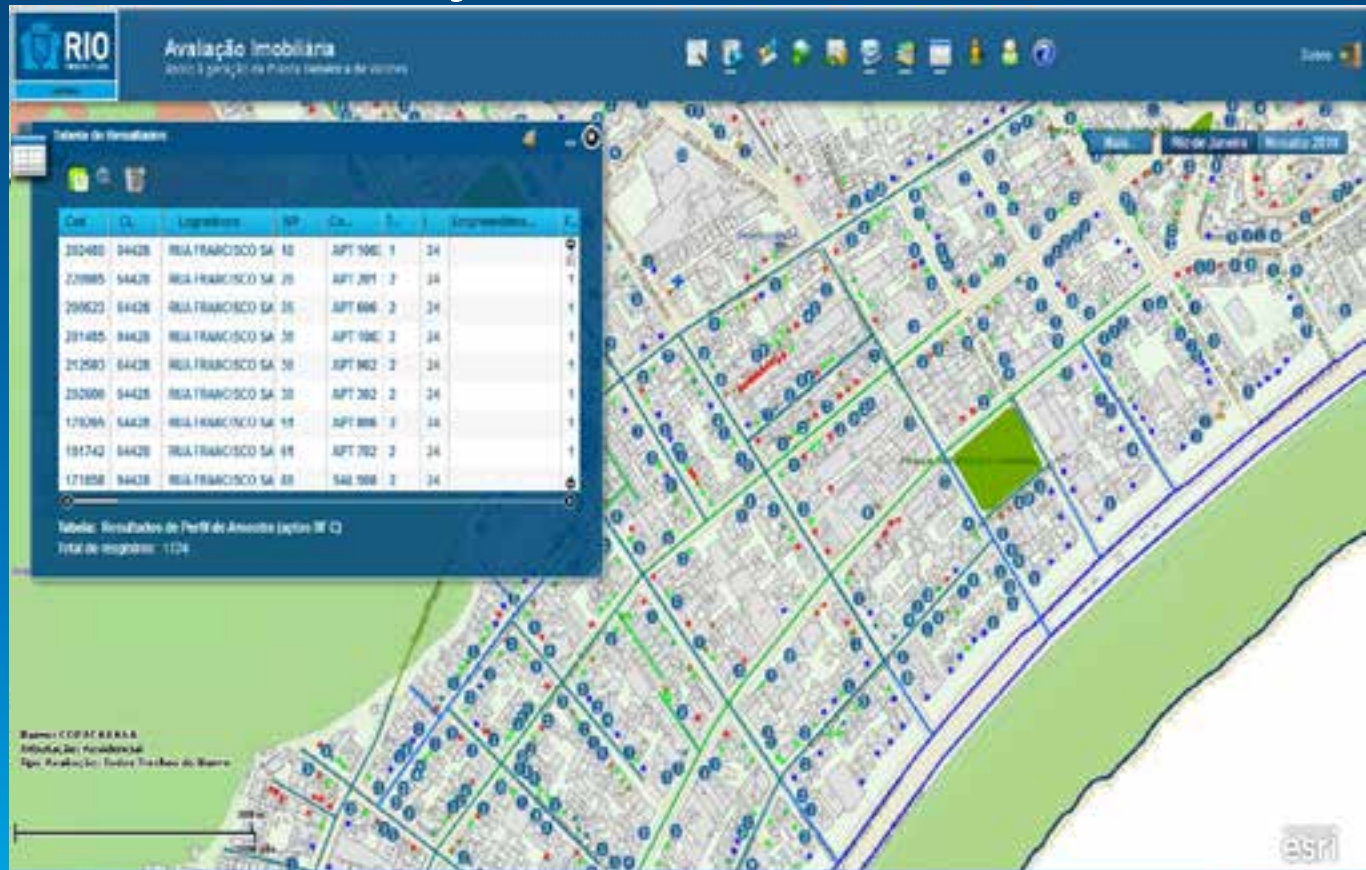
José Augusto da
Silva Machado



The benefits of using GIS for Fiscal Management in Rio de Janeiro City

Author:

José Augusto da
Silva Machado



The benefits of using GIS for Fiscal Management in Rio de Janeiro City

Author:
José Augusto da
Silva Machado

The screenshot displays a web-based GIS application. On the left, a map shows a street grid with a highlighted area. The right panel, titled 'SECRETARIA MUNICIPAL DE URBANISMO - Informações Detalhadas', provides the following information:

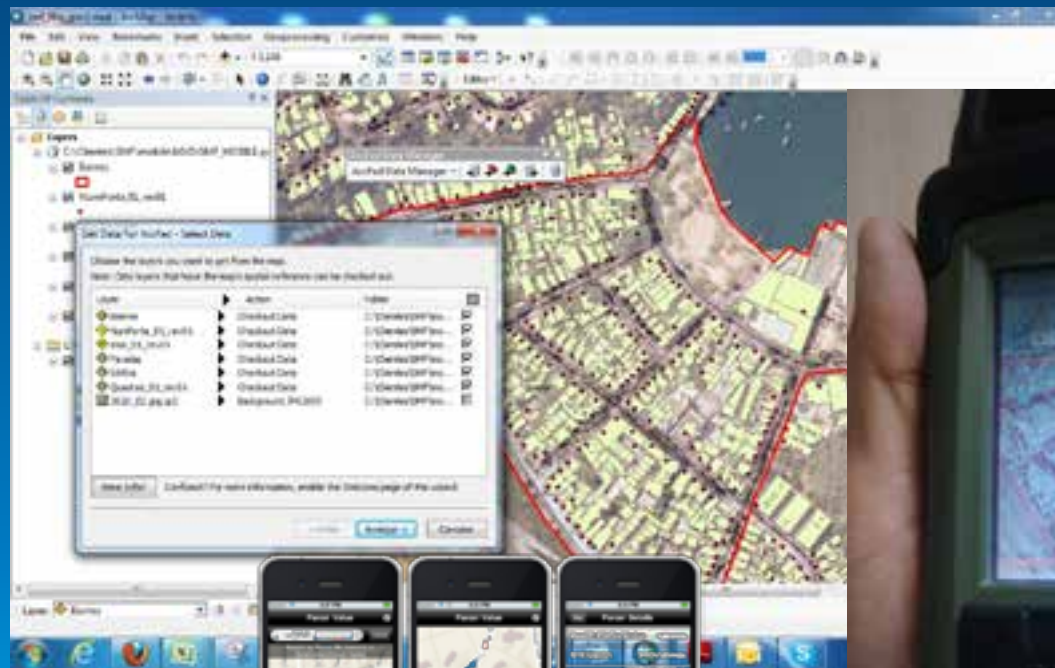
- 1 - Localização:**
 - Logradouro: RUA DAS IRMÃS ANGÉLICA
 - Endereço: RUA DO FRECHO, 100
 - Cidade: Rio de Janeiro
 - Bairro: Inhaúma
 - UF: RJ
 - CEP: 22460-000
 - Telefone: 22714000
- 2 - Dados Cadastrais do Logradouro:**
 - Plano: Cadastro 2009, 02, 2
 - Plano: Sistema de Arterialidade (SIA)
 - Plano: Sistema de Loteamento (SIL)
 - Plano: Sistema de Registro (SIR)
- 3 - Zoneamento:**
 - Modalidade: Município de Ocupação Controlada - [Ver Plano ZC 11/12/01](#)
 - Zona: - consulte a Lei Municipal
 - Subzona: -
 - Centro de Bairro: -
 - Zona Ambiental: -
 - Área de Especial Interesse (AEI): -

Atenção: quando se trata de limite de zona, observar artigos 113 e 114 do Regulamento de Zoneamento (RJ) [Decreto 122/12/12](#) e a legislação municipal e os planos de Arterialidade, Loteamento e Registro (SIA, SIR).
- 4 - Altura de Altura:**
 - Altura máxima dos cômodos: [Decreto 122/12/12](#), [Decreto 122/12/12](#) - artigo 82 do Decreto 122/12/12 - gabarito de altura para a zona de altura 1,2m
 - Altura máxima dos edifícios: [Decreto 122/12/12](#), [Decreto 122/12/12](#) - gabarito de altura para a zona de altura 1,2m
 - Altura máxima dos edifícios: [Lei 120/12/12](#), [Decreto 122/12/12](#) - altura máxima 12m observar artigo 63 do Decreto 122/12/12
 - Altura máxima dos edifícios: [Lei 120/12/12](#), [Decreto 122/12/12](#) - altura máxima 12m observar artigo 63 do Decreto 122/12/12
- 5 - Áreas Protegidas:**

The benefits of using GIS for Fiscal Management in Rio de Janeiro City

Author:

José Augusto da
Silva Machado



The benefits of using GIS for Fiscal Management in Rio de Janeiro City

Author:

José Augusto da
Silva Machado



DS_POSICAO_PREDIAL	TERREO
DS_SITUACAO_TERRENO	
DS_STATUS	NORMAL
DS_TIPOLOGIA	LOJA
DS_TIPO_CONTRIBUENTE	PARTICULAR
DS_UTILIZACAO	BAR/CAFE/LANCHONETE

The benefits of using GIS for Fiscal Management in Rio de Janeiro City

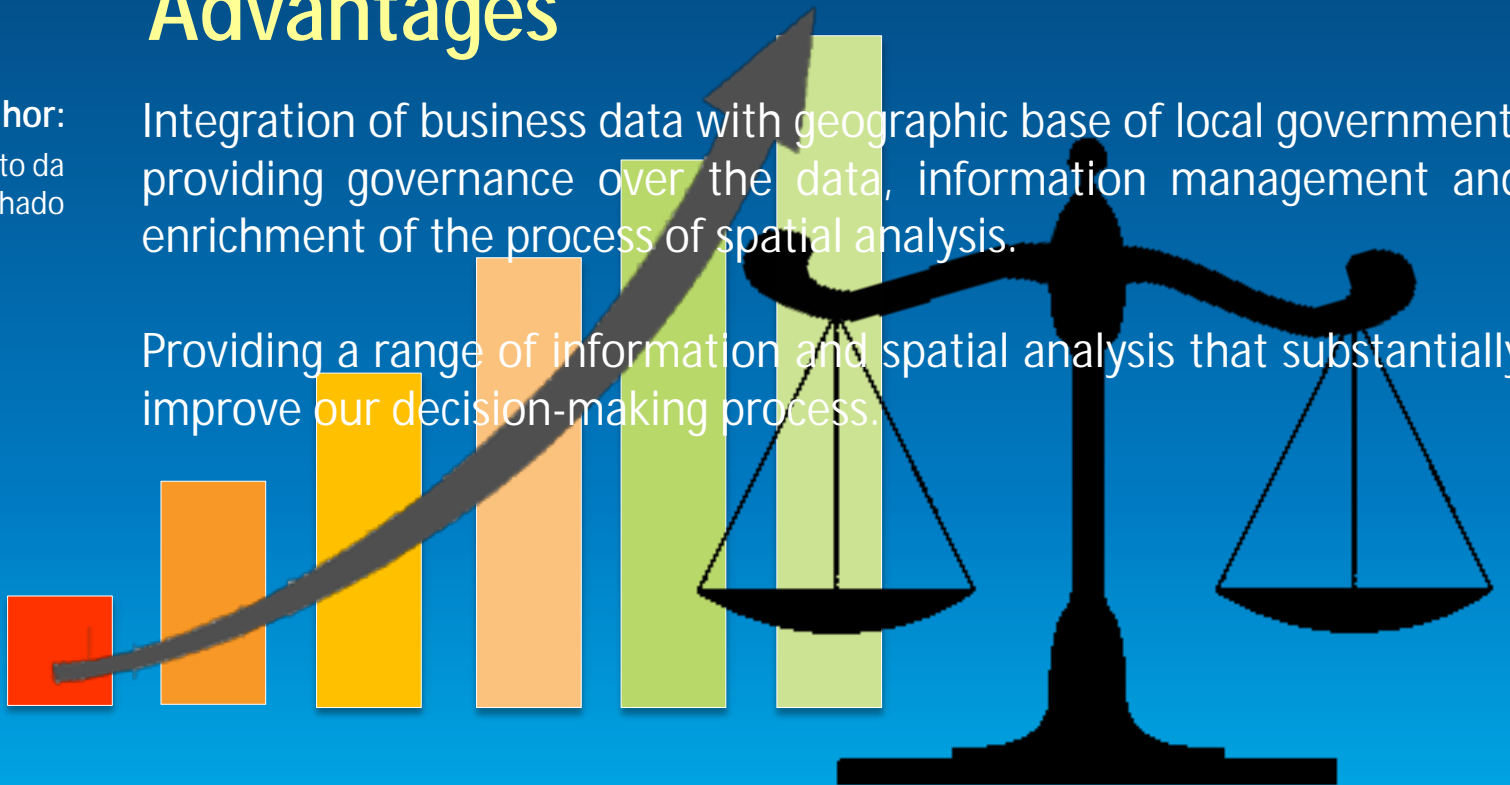
Advantages

Author:

José Augusto da
Silva Machado

Integration of business data with geographic base of local government, providing governance over the data, information management and enrichment of the process of spatial analysis.

Providing a range of information and spatial analysis that substantially improve our decision-making process.

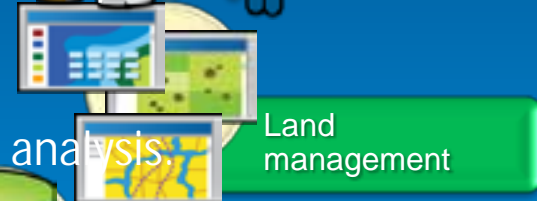
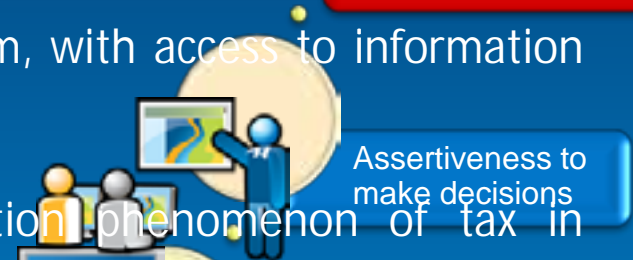


The benefits of using GIS for Fiscal Management in Rio de Janeiro City

Goals Achieved

Author:
José Augusto da
Silva Machado

- ✓ Availability of georeferenced form, with access to information and query and analysis tools.
- ✓ Quick interpreting and localization of phenomenon of tax in geographic space.
- ✓ Disclosure of internal jobs and tax analysis.
- ✓ Use of tooling for the development of Generic Plant Securities, with accompanying recovery of the housing market.



The benefits of using GIS for Fiscal Management in Rio de Janeiro City

Goals Achieved

Author:

José Augusto da
Silva Machado

- ✓ Control of urban space, enabling the planning of fiscal supervision.
- ✓ Assertiveness in the decision making process improvement management of tax policy.
- ✓ Disclosure of aggregated data and information to citizens.
- ✓ More information and transparency for citizens.

The benefits of using GIS for Fiscal Management in Rio de Janeiro City

