



VHA 10P1 GIS: What Success Looks Like Now and Beyond

PSSG-Transforming Information into Insight

PRESENTED BY:

Kevin Willis, MBA, GISP, PMP, PSSG Director

Mike McDonald, PMP, Director of Product Delivery- PenBay Solutions

The Planning Systems Support Group (PSSG) Identity & Mission

Who we are:

- § Planning Systems Support Group (PSSG), the GIS office within the VHA Office of Policy & Planning
- § Four geographers and support staff
- § Contract support from PenBay Solutions, LLC

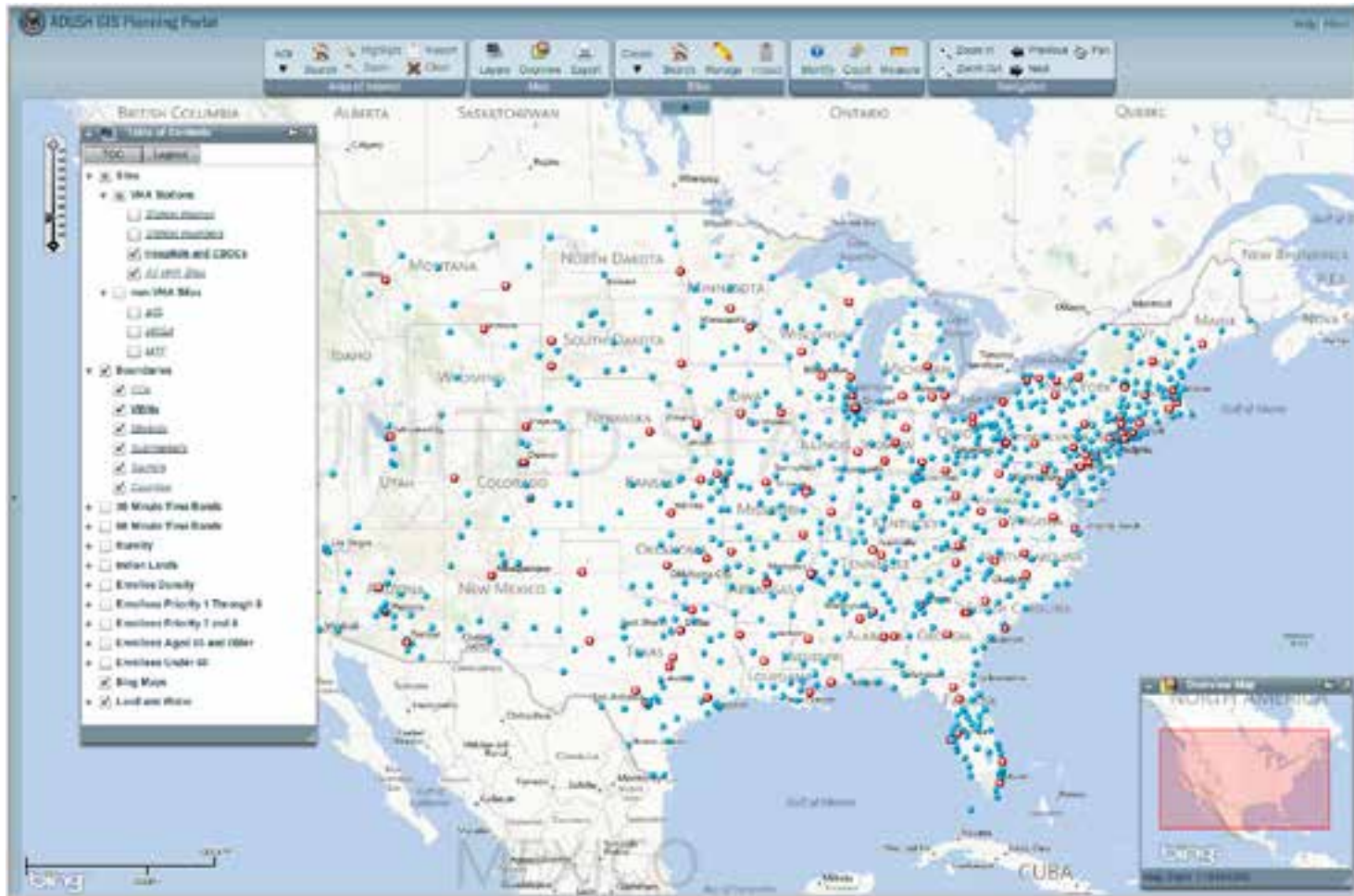
Mission:

- § To turn information into insight by leveraging geospatial analyses to optimize health care accessibility and delivery of services through population-based planning

Expanding the GIS Footprint

Flagship Product: ADUSH GIS Planning Portal

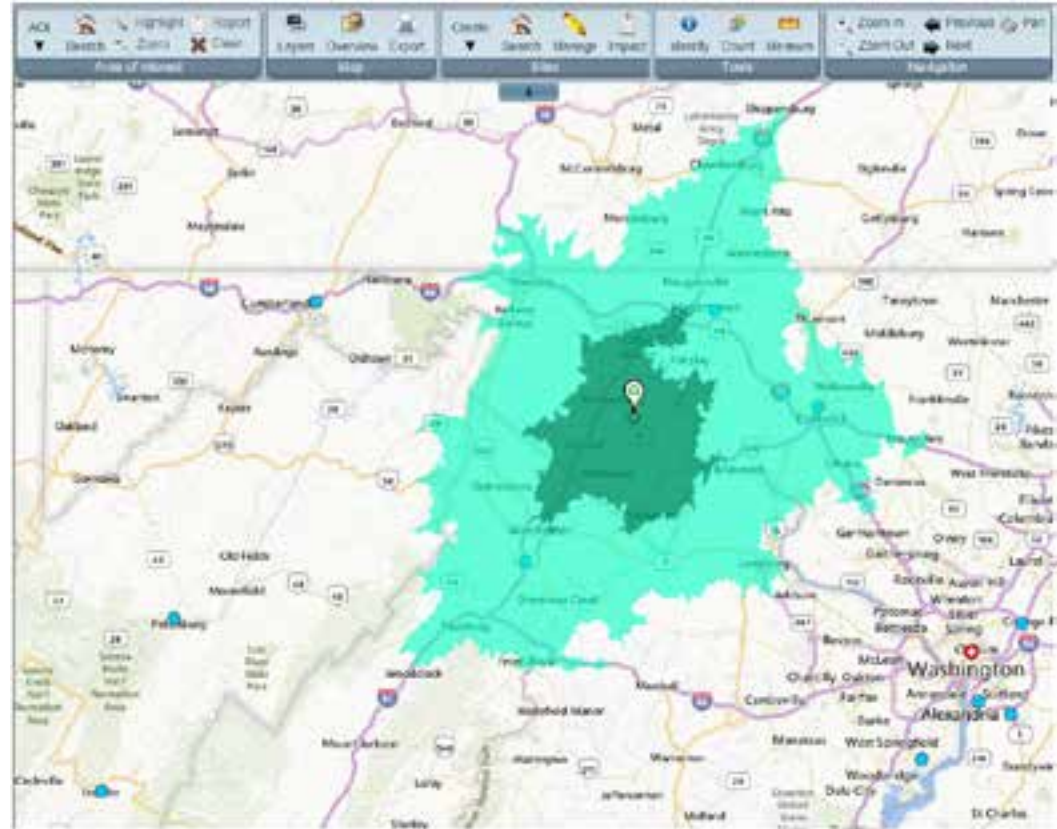
Hybrid mapping solution that provides simple and easy-to-use GIS capabilities to every VA



Planning Portal Evolution (2009-2011)

Cursory view for VA planners to perform predefined yet sophisticated analyses on their own

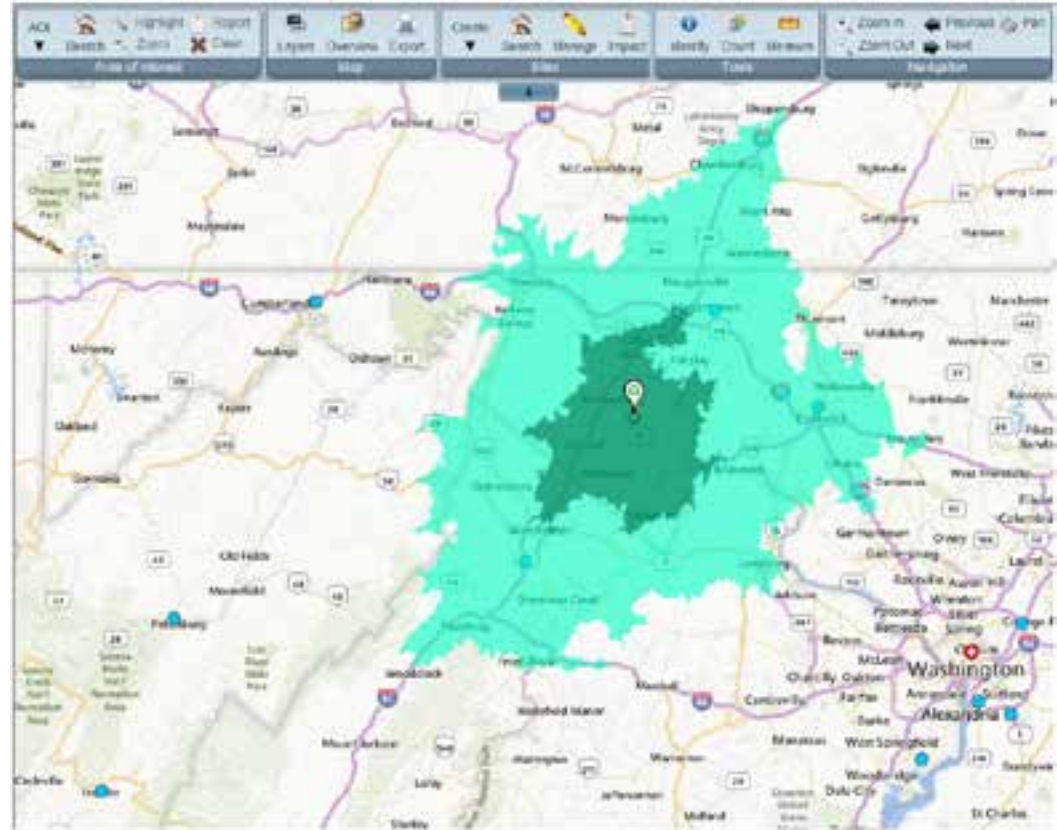
- **Impact Reports**
 - Enrollee Counts & Priority group breakouts
 - Rurality percentages in a given area of interest
- **Site Selection Scenarios**
 - Impact of adding 1 site or decommissioning 1 site



Planning Portal Evolution (2011-2013)

Cursory view for VA planners to perform predefined yet sophisticated analyses on their own

- **Impact Reports**
 - Enrollee Counts & Priority group breakouts
 - Rurality percentages in a given area of interest
- **Site Selection Scenarios**
 - Impact of adding 5 sites or decommissioning 5 sites
- **Enhanced Printing**
 - More robust map outputs
 - Self labeling titles/text



Planning Portal Evolution 2014 & Beyond

Taking the GIS Planning Portal to the next level with PenBay Solutions' InVision Insite

penbaysolutions
Global Leaders in Facilities GIS

ABOUT US | INVISION PRODUCTS | INDUSTRY SOLUTIONS | SERVICES | RESOURCES | CASE STUDIES

InVision InSite

InVision InSite addresses all of the spatial challenges associated with site analytics, design, and construction stages of the facility lifecycle.

No.	Date	Project
100	4/20/11	Project 24

InVision Facilities Management Suite

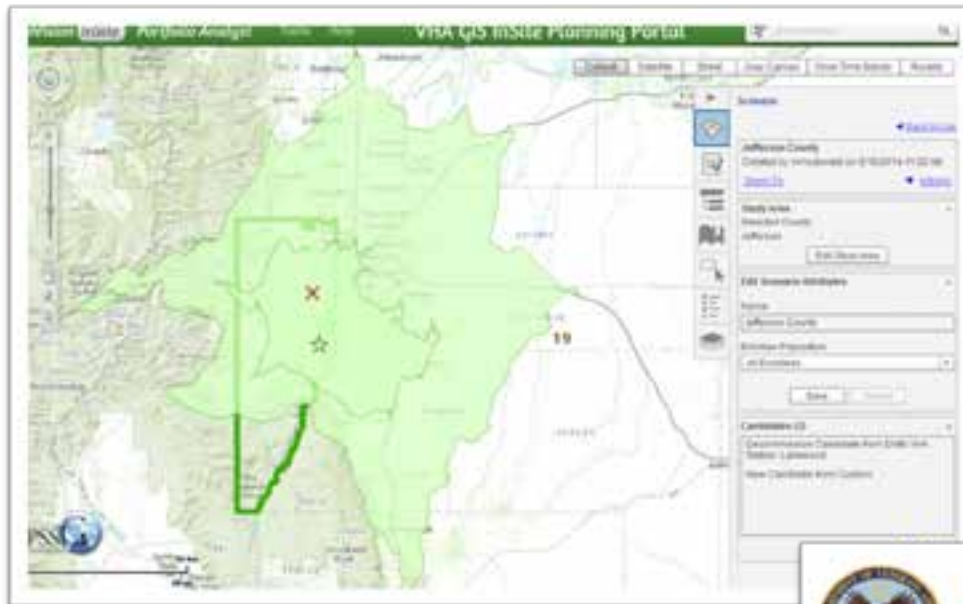
A COTS Approach to Planning

- Doing more with less
- Building on existing capabilities
- Enabling extensibility
- Ensuring Sustainability
- Leveraging the Esri platform
- Integrating with existing systems



Candidate Site Placement and Impact Analysis

Expanding and Enhancing Planning Scenarios



- Choose candidate sites (by address, placement, suggestion)
- Visualize drive time bands
- Analyze impact and generate reports
- Store scenarios on-line and share with colleagues
- Configurable and extensible

Impact Report
Scenario: Jefferson County
Population: All Enrollees

Population	Urban		Rural		Highly Rural		Total	
	Number	Percent	Number	Percent	Number	Percent	Number	Percent
Enrollees in Areas of Candidate Sites	4,878	49.4%	437	4.4%	0	0.0%	5,315	53.9%
Enrollees in Areas of Decommission Sites	4,878	49.4%	269	2.7%	0	0.0%	5,147	51.1%
Changes in Area of Interest Coverage	4,878	49.4%	437	4.4%	0	0.0%	5,315	53.9%
Enrollees Meeting Drive Time Guidelines After Site Evaluation	4,878	49.4%	437	4.4%	0	0.0%	5,315	53.9%
Changes in Enrollments with Multiple Access Points	0	0.0%	0	0.0%	0	0.0%	0	0.0%
Enrollees in Area of Interest	4,878	49.4%	437	4.4%	0	0.0%	5,315	53.9%
Enrollees Currently Meeting Drive Time Guidelines	0	0.0%	0	0.0%	0	0.0%	0	0.0%

Based on 2012 Enrollment Data

Integration Opportunities

Partnering with local organizations using InVision/ArcGIS Integration



- Military Treatment Facilities
- Indian Health Services
- HRSA Sites
- FQHCs
- NPI Organizations
- Services based approach
- Ease of configuration
- Integration of data into scenarios and impact reports

Questions/Comments?

