

# Desktop to Mobile with ArcGIS Online in 4 Days

Esri International User Conference  
San Diego, CA  
July 15, 2014

Jennifer Tovar  
GIS Coordinator  
Town of Greenville, Wisconsin

# Town of Greenville, Wisconsin



# 911 Memorial



# GIS

- 1 person department
- 100% desktop
- 2 licenses





# Challenges

- Expand functionality
- Distribute geospatial information
- Buy-in



# Solutions

- ArcGIS Online
- ArcGIS for Local Government Jumpstart Package





# Results

# Administration

## Before

- Maps and handouts



## After

- Web apps on website



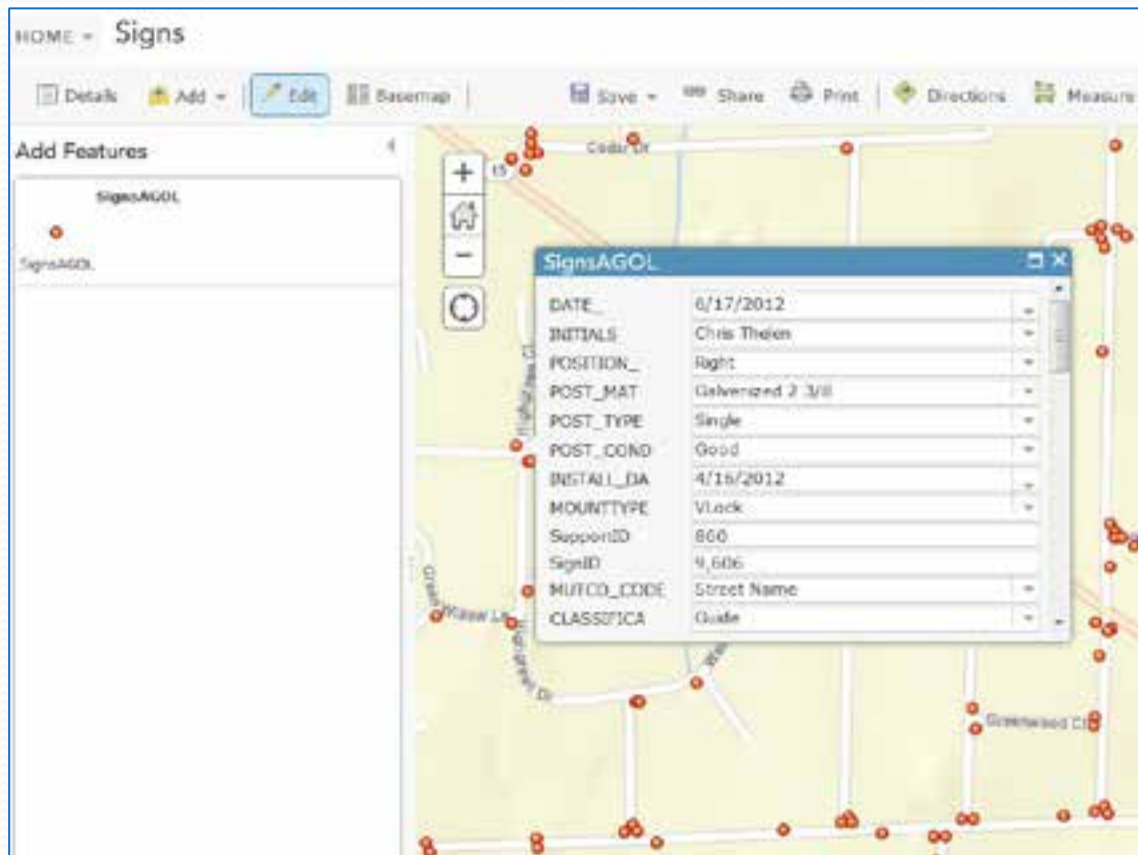
# Streets

## Before

- ArcPad

## After

- Collector for ArcGIS



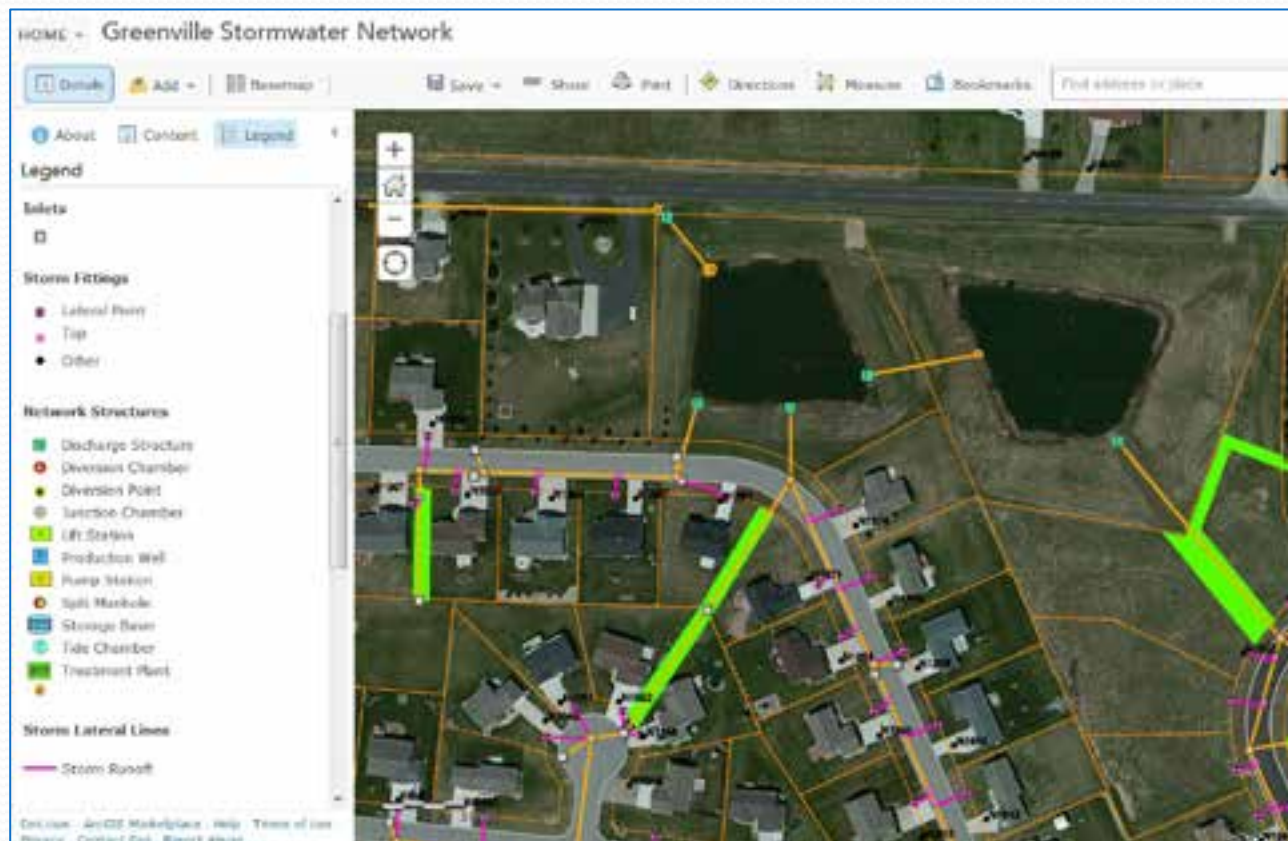
# Stormwater

## Before

- Electronic data

## After

- Collector for ArcGIS





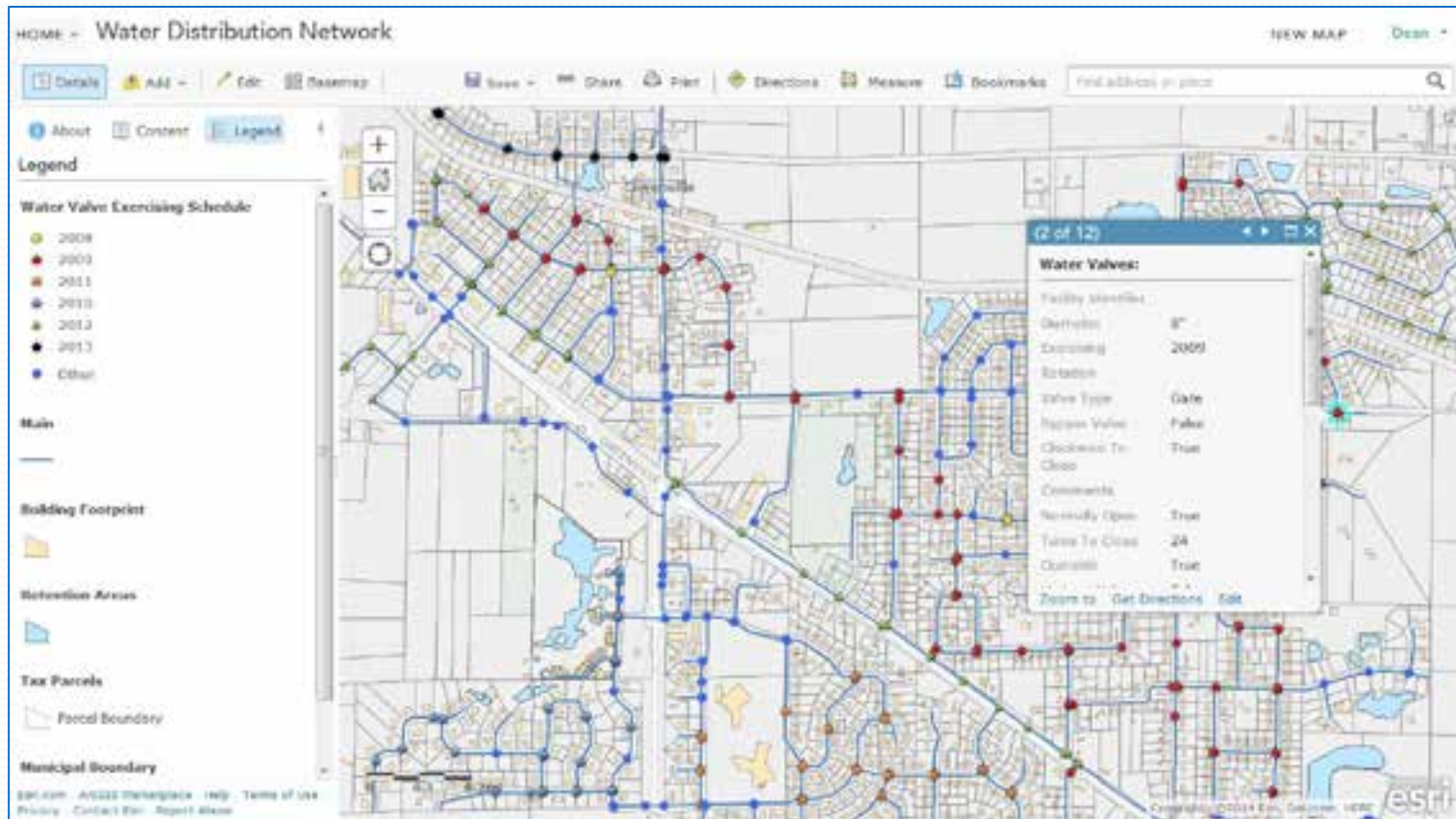
# Water & Sanitary

## Before

- Paper maps distributed

## After

- Web maps





# Parks, Recreation & Forestry

## Before

- Access database

## After

- Collector for ArcGIS

The screenshot displays the ArcGIS Collector interface for a project titled "2014 Street Tree Planting". The interface includes a top navigation bar with options like "Details", "Add", "Edit", "Beemap", "Save", "Share", "Print", "Directions", "Measure", and "Bookmarks". A search bar on the right allows for finding addresses or places. On the left, a "Contents" panel lists various layers such as "TreeInventory2013", "Address Labels", "Address Points", "Tax Parcels", "Municipal Boundary", "Subdivisions - All Subdivisions", "Trees Inventory Labels", and "Streets". The main map area shows a street grid with colored overlays and black dots representing tree locations. A scale bar and north arrow are visible on the left side of the map. At the bottom, a data table titled "TreeInventory2013 (230 features, 0 selected)" provides a list of tree records.

CISTreeID	SiteNumber	Condition	TreeDown	Directional	Address	Street	LoLocation	Species	Table Options
1024	2	None	Open	W	7207	Fox Hollow La	Front	Vacant Site	Vacant Site
1030	1	None	Open	W	7224	Fox Hollow La	Front	Vacant Site	Vacant Site
1050	1	None	Open	W	7265	Fox Hollow La	Front	Vacant Site	Vacant Site
105h	4	None	Open	W	7272	Fox Hollow La	Front	Vacant Site	Vacant Site

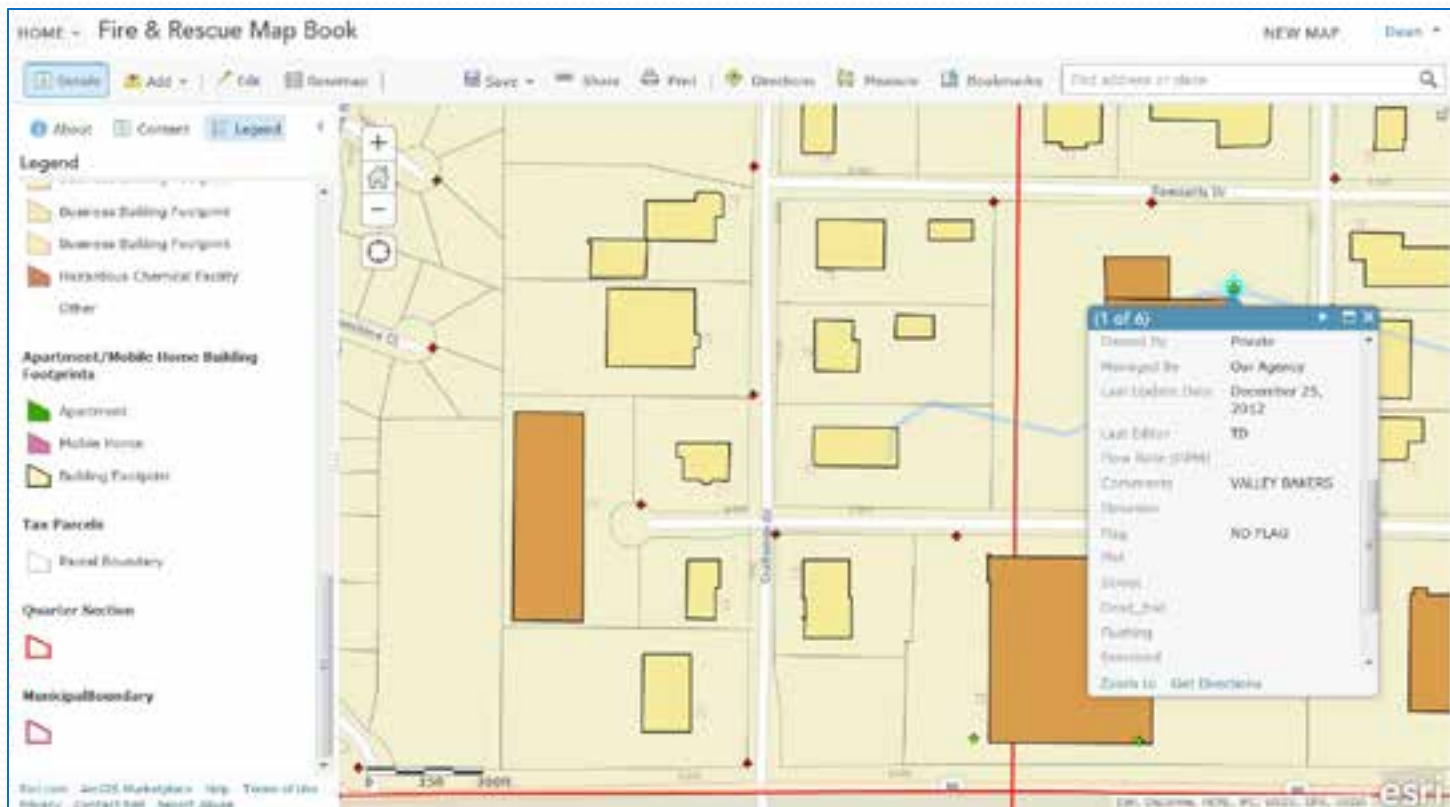
# Fire & Rescue

## Before

- 152 page Map Book printed

## After

- Web app created



# Future Plans

- More tablets
- Data analysis
- Integrate interdepartmental attachments
- New advancements in AGOL....



# Thank You

- Jennifer Tovar
- GIS Coordinator
- 920-757-7276
- [jtovar@townofgreenville.com](mailto:jtovar@townofgreenville.com)
- Kevin Stewart, GISinc
- Senior Account Manager
- 205-941-0442 x135
- [kstewart@gisinc.com](mailto:kstewart@gisinc.com)

