



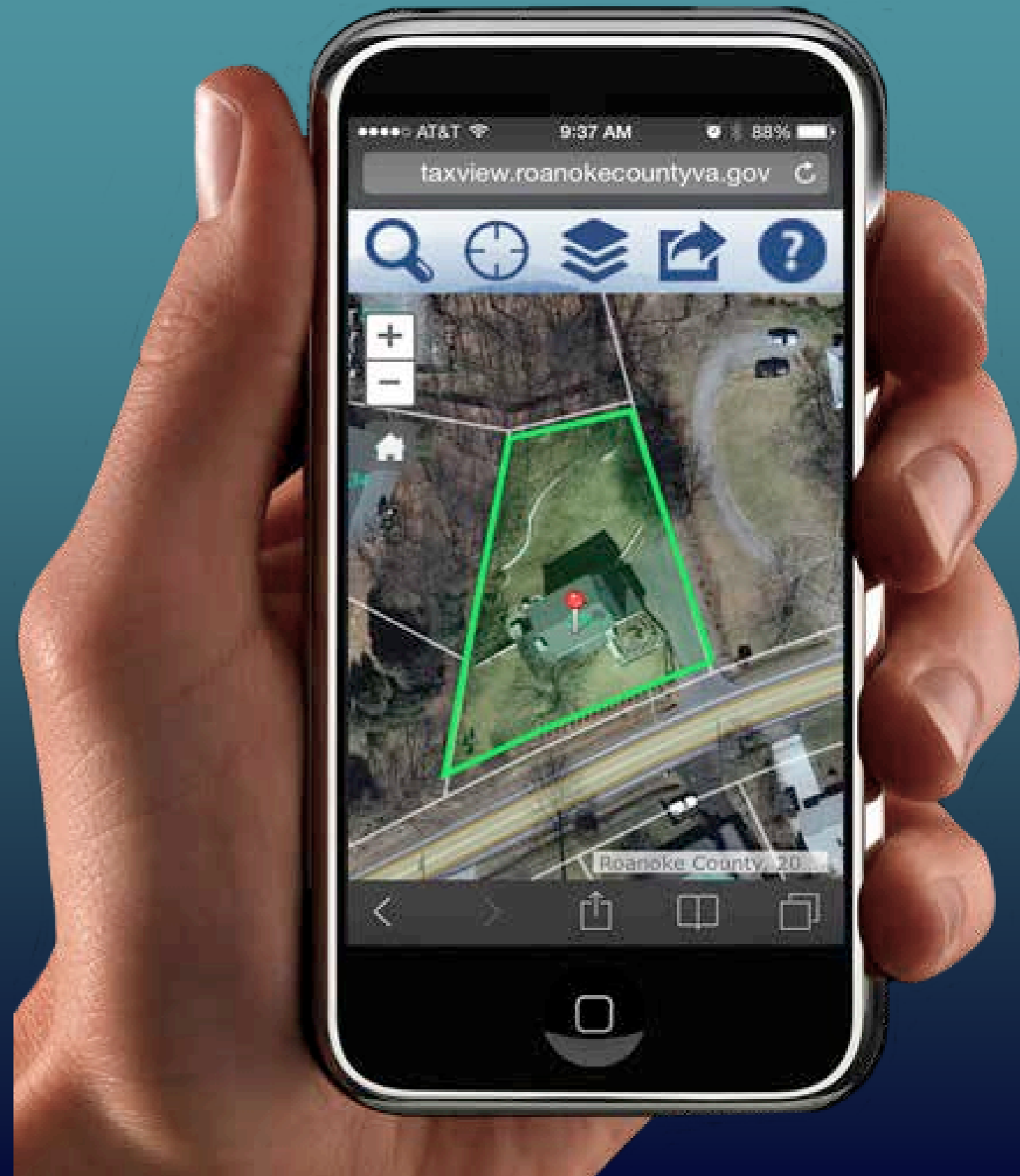
Sharing GIS to Empower the End User

David Wray, Roanoke County, Virginia



Sharing GIS to Empower the End User

Roanoke County,
Virginia



Roanoke County, Virginia

Population: 92,901

Area: 251 Square Miles

Protected Areas:

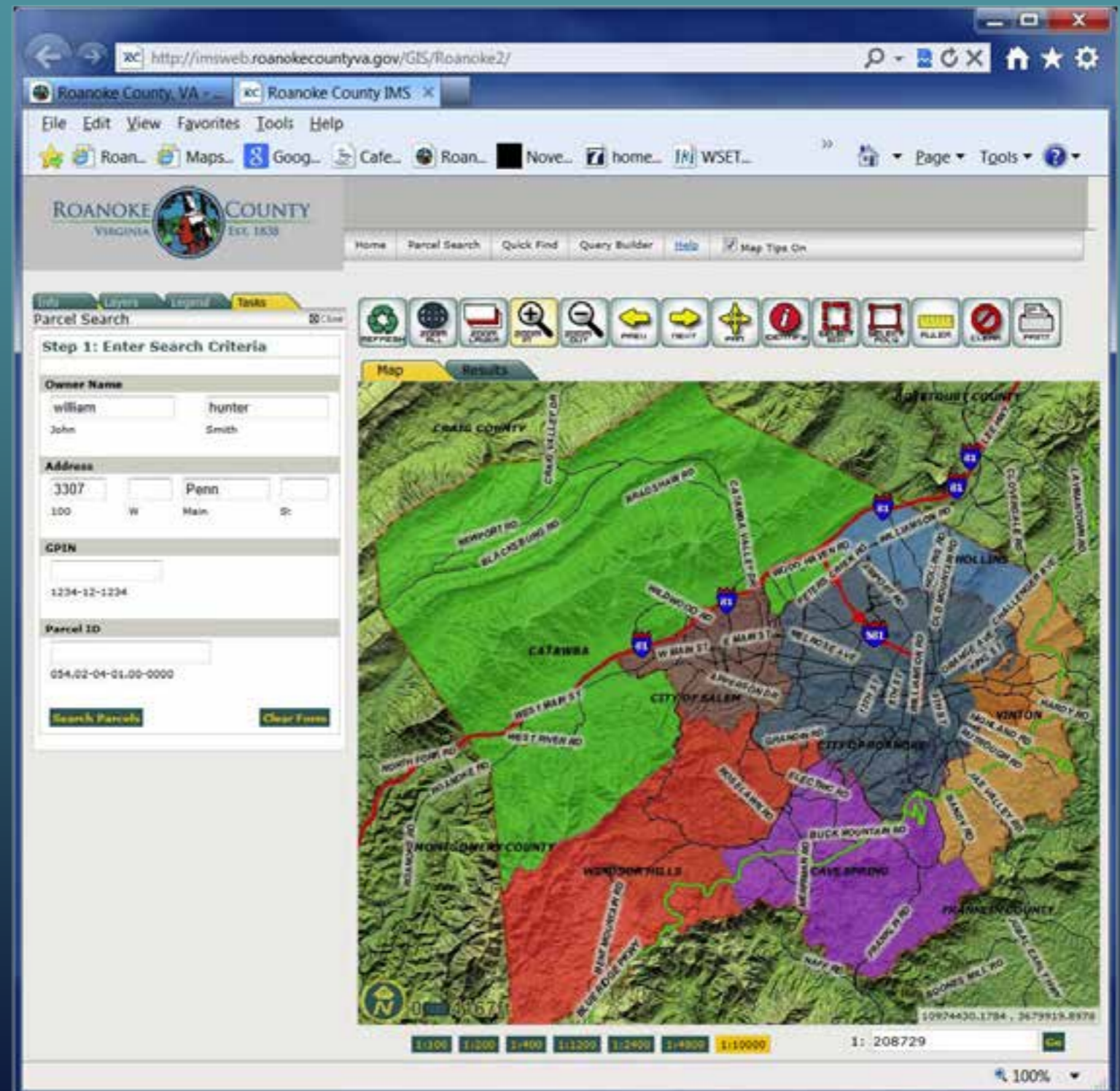
- Blue Ridge Parkway
- Jefferson National Forest

Notable People: J. J. Redick, Tiki & Ronde Barber



Old GIS System

- Launched in 2006
- Offers basic map services and data layers
- Complicated user experience
- Limited compatibility



Citizen Engagement

More and more residents and businesses rely on Roanoke County's GIS information each year...

- Home Owners' Tax Map and Parcel Info
- Residential Real Estate
- Commercial Real Estate
- Developers
- Business Expansion
- Business Site Selection
- Appraisers



Created GIS Services Team

GIS services used daily by many departments...

- Police
- Fire & Rescue
- Emergency Communications (E-911)
- Real Estate Valuation
- Community Development
- Economic Development
- Planning & Zoning
- Flood Plain Management
- Storm Water Management
- Trash Collection and Recycling
- Elections
- Parks, Recreation & Tourism
- Transportation
- Social Services
- County Schools

Built GSPlatform VMware Environment



Esri Local Government Templates

- Maps & Apps Gallery
- TaxView
- GovView
- VoterView

The screenshot displays the Roanoke County GIS Home page. At the top, the Roanoke County logo is visible, along with navigation links for GIS Home, Maps and Apps Gallery, Feedback / Request App, and All. The main content area is a gallery of six mobile-ready applications, each with a thumbnail image, a title, a description, and a 'Read more...' link. A disclaimer is located on the left side of the gallery.

Roanoke County, VA 2014

#1 TaxView (Mobile Ready)
TaxView provides the citizens and other interested parties with local government property tax and assessment information...

#2 GovView (Mobile Ready)
GovView helps residents locate a government facility and obtain information about curbside and dropoff services provided...

#3 OneView (Mobile Ready)
OneView provides the citizens and other interested parties with Home Sales, Land Records, Planning, Zoning,...

#4 3-D View
3-D View allows citizens to quickly and easily access imagery online. With 3-D View, citizens have online access to all...

#5 VoterView (Mobile...)
VoterView helps citizens locate their election polling place and obtain information about current elected officials.

#6 Voting Precincts
The Voting Precincts map shows where residents go to vote in the County of Roanoke, Virginia.

Disclaimer: It is understood that the data displayed through this application is subject to constant change and that its accuracy cannot be guaranteed. The maps have been created from information provided by various government and private sources at various levels of accuracy. The data is provided to you "as is" with no warranty, representation or guaranty as to the content, sequence, accuracy, timeliness or completeness of any of the information provided herein. It is the responsibility of the user of the data to be aware of the data's limitations and to utilize the data in an appropriate manner.

Privacy/Legal | Accessibility | Feedback

Our Neighbors: City of Roanoke

Enhanced Esri Local Government Templates

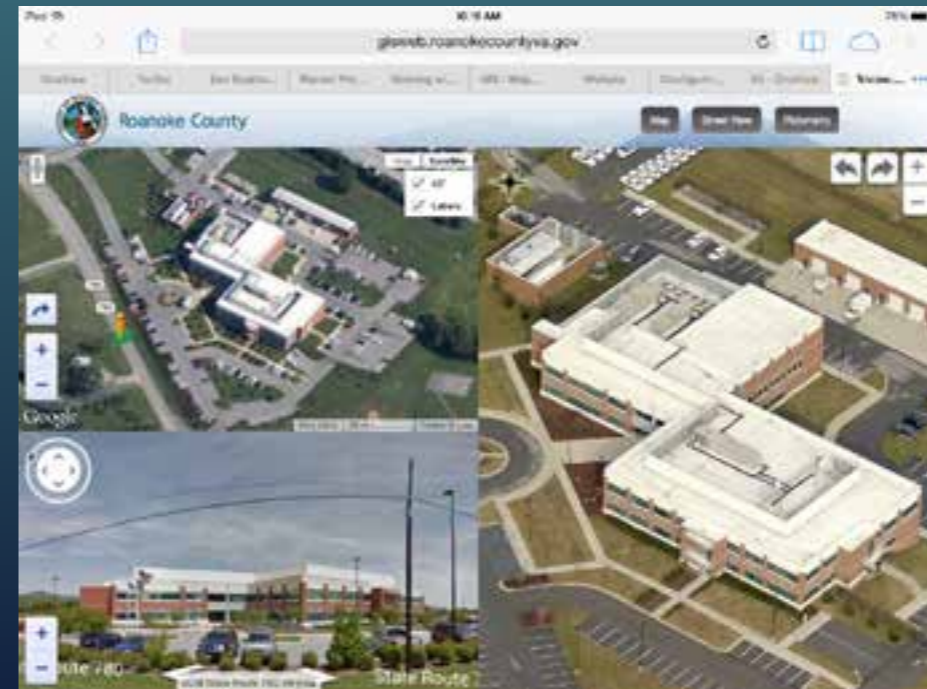
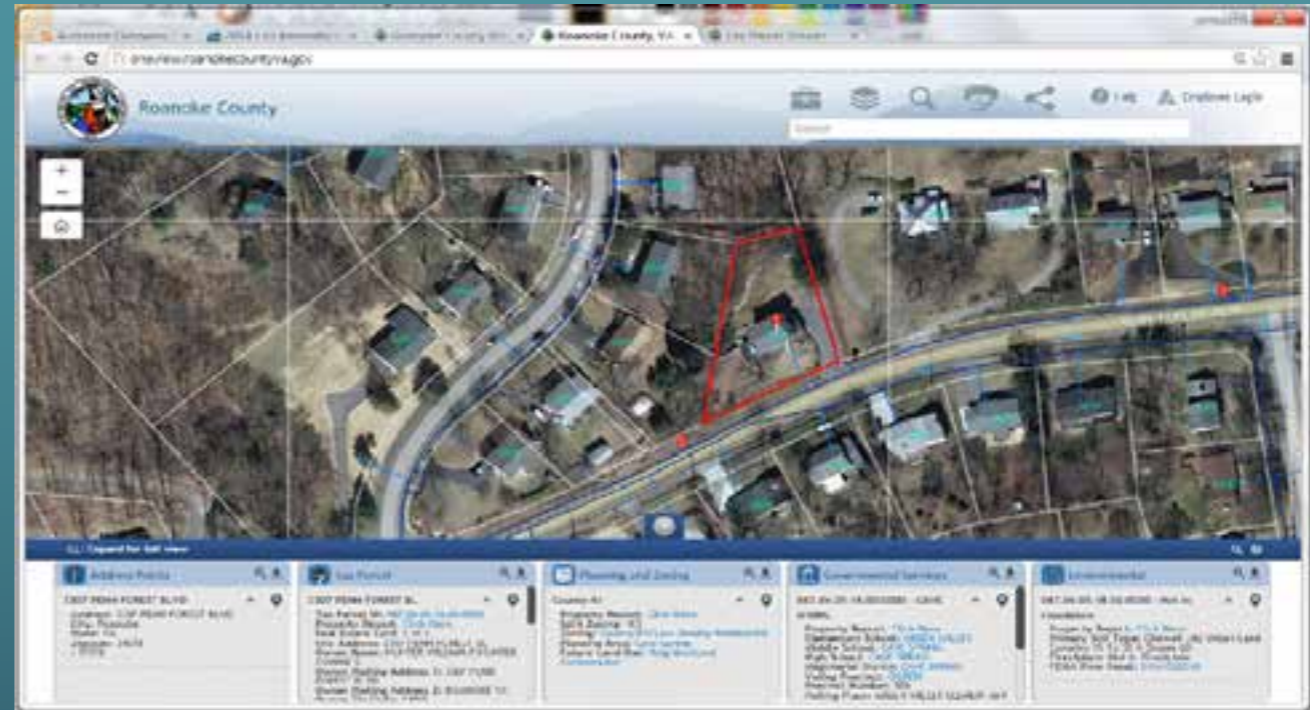
- Configurable Autocomplete Search Across all Apps
- Responsive Design (Mobile Ready)
- Accordion Style Info Window for TaxView
- Collapsible Info Window
- One Click Zoning & BroadBand
- Branding
- One Click Hyperlink Integration



Teamed up with GIS Inc.

Applications:

- OneView
- TriView
- Property Report
- Maps & Apps Gallery
- TaxView
- GovView
- VoterView



Google Analytics Web Reporting

April 23rd thru June 23rd

Application	Users	Pageviews
Maps & Apps Gallery	12,617	32,746
TaxView	9,761	30,858
Property Report	3,366	10,978
OneView	3,790	9,073
GovView	899	1,412
TriView	558	812
VoterView	309	519
3-D View	NA	38,981
GeoEnrichment Report	NA	907
Total	31,300	126,286

Mobile Data Collection using ArcGISOnline

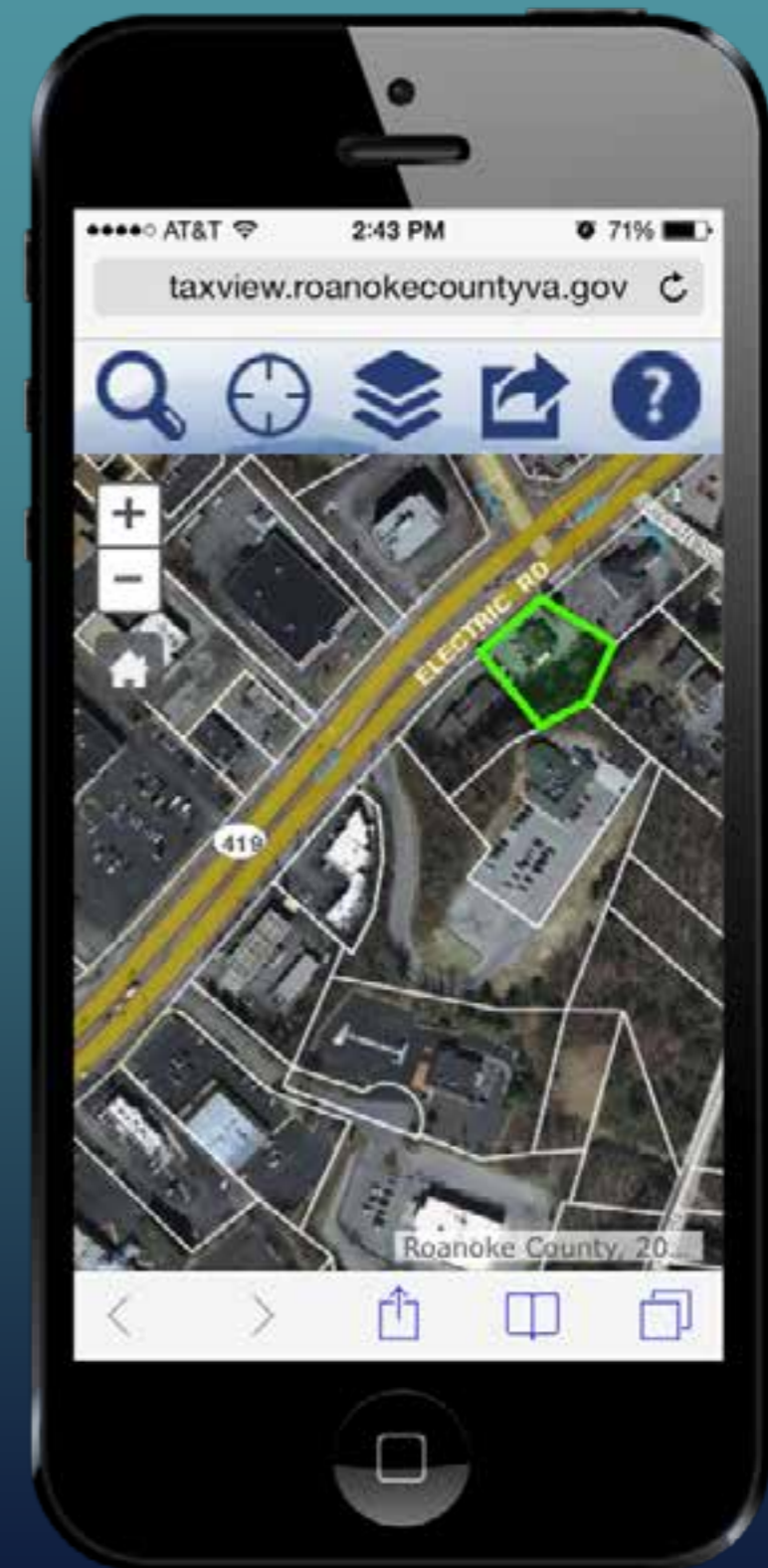
- Real-time Stormwater assessments
- Saves staff time
- Empowers staff in the field
- Improves overall data quality
- Intuitive and simple to use for staff



New GIS Website Features

The New GIS Website...

- Makes GIS services easy to use
- Makes GIS data easy to share
- Makes GIS services easy to access
 - Desktop computer:
Browser-based Internet Explorer, Safari, Chrome, Firefox
 - Mobile Phones: iPhone, Android
 - Tablets: iPad, Surface, Galaxy



New GIS Website Features

Features not offered by other localities in the region...

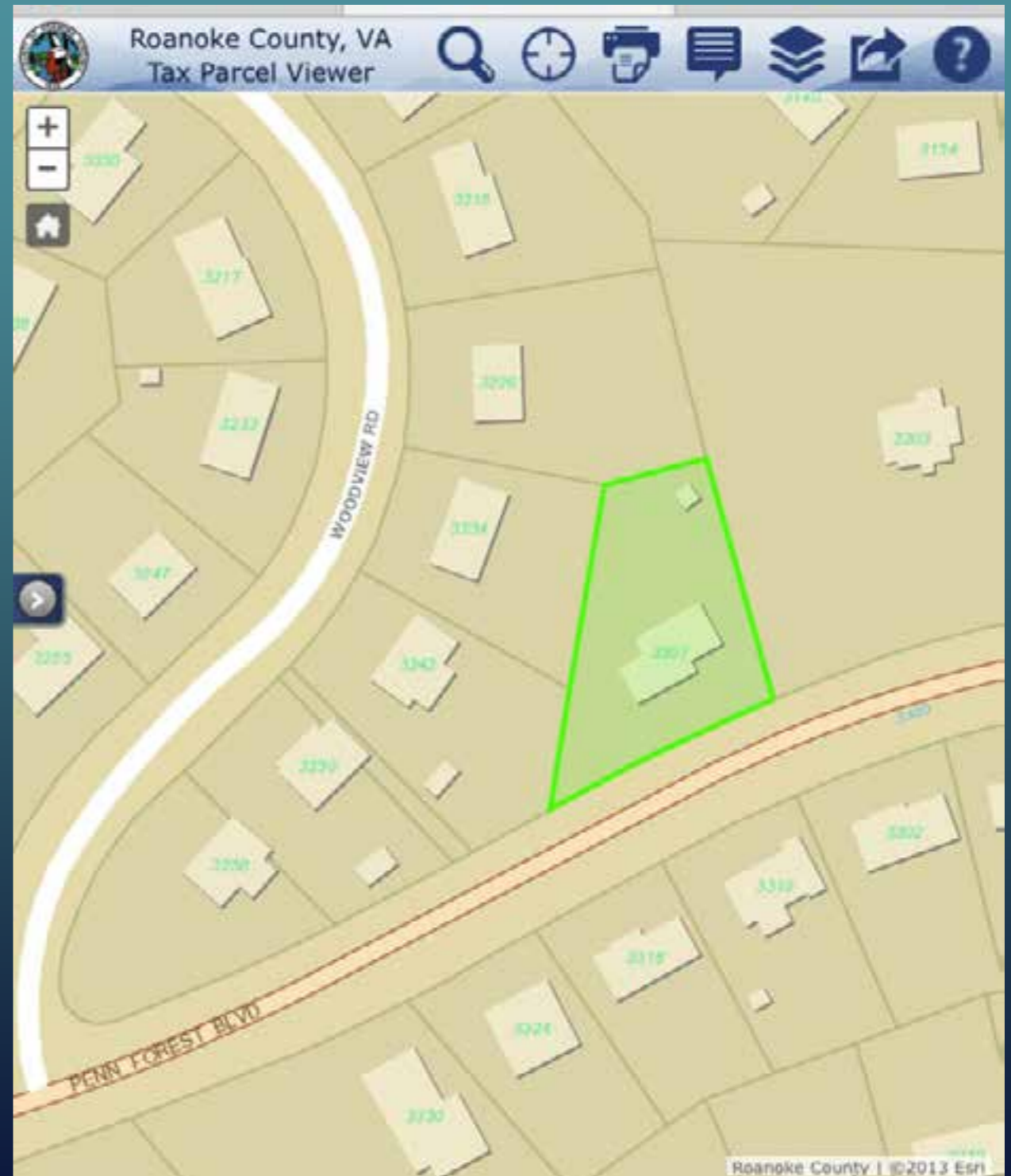
Casual and Citizen-User Features Power Users and Professionals

- Intuitive design for easy use
- Single-focused, citizen-based apps
- Autocomplete Search
- Geo-location for mobile devices
- Share by email and social media
- One-click information for Zoning, Google Streetview, 3-D Pictures, Tri-View, Broadband Access and more
- Integrated links between apps (shared services)
- Mobile and desktop compatibility
- Single-focused apps for government services and voter information
- Advanced Markup and Measurement
- Export data to KMZ format
- Enhanced Search by buffer, polygon, point, and intersections
- Demographic information by 5, 10, and 15 mile radius
- High resolution printing
- Improved basemaps for Street, Parcel and Hybrid views
- Interactive Property Report
- Links to FEMA FIRM panels

Multi-Use Approach to GIS Services

Single-focused apps are more efficient.

- New approach enables single-focused applications
 - Get in, get info, get out.
- Common look and feel
 - Increases customer adoption and satisfaction.



Gallery

All Categories

- Community Development
- Government Services
- Elections & Voting
- Property Value & Taxes
- Public Safety

All Types

Disclaimer: It is understood that the data displayed through this application is subject to constant change and that its accuracy cannot be guaranteed. The maps have been created from information provided by various government and private sources at various levels of accuracy. The data is provided to you "as is" with no warranty, representation or guaranty as to the content, sequence, accuracy, timeliness or completeness of any of the information provided herein. It is the responsibility of the user of the data to be aware of the data's limitations and to utilize the data in an appropriate manner.

#1 TaxView (Mobile Ready)



By: Roanoke County, VA 2014
TaxView provides the citizens and other interested parties with local government property tax and assessment information...

[Read more...](#)

#2 GovView (Mobile Ready)



By: Roanoke County, VA 2014
GovView helps residents locate a government facility and obtain information about curbside and dropoff services provided...

[Read more...](#)

#3 OneView (Mobile Ready)



By: Roanoke County, VA 2014
OneView provides the citizens and other interested parties with Home Sales, Land Records, Planning, Zoning,...

[Read more...](#)

#4 3-D View



By: Roanoke County, VA 2014
3-D View allows citizens to quickly and easily access imagery online. With 3-D View, citizens have online access to all...

[Read more...](#)

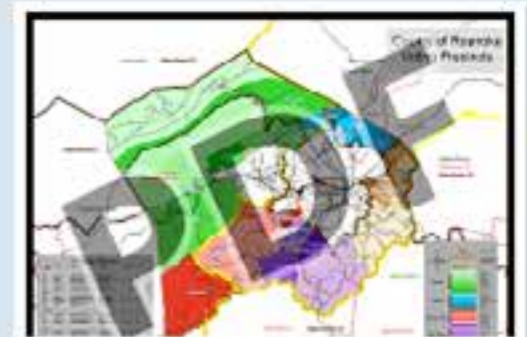
#5 VoterView (Mobile...)



By: Roanoke County, VA 2014
VoterView helps citizens locate their election polling place and obtain information about current elected officials.

[Read more...](#)

#6 Voting Precincts



By: Roanoke County, VA 2013
The Voting Precincts map shows where residents go to vote in the County of Roanoke, Virginia.

[Read more...](#)

Lessons Learned

- Standardize AutoComplete Across all Apps
- One Click Identify
- Info Window Carousel
- Listen to your End User
- Leverage Outside Sources
 - Google StreetView
 - Esri Geoenrichment Reports
- Hyperlink Integration
- ArcGIS Server Security
- Spatial Views are Powerful

Acknowledgements:

Kevin Stewart: Geographic Information Services, Inc.

Office: 205.941.0442 x135 | Cell: 205.807.8081



Dawn Matasic, Esri

Office: 704.541.9810 x8647 | Mobile: 704-641-6032



Questions?



Sharing GIS to Empower the End User
Roanoke County, Virginia