



Utility Valuation

**GAS**  
PROGRAM

July 2014

Scott Sampson  
David Wright



# Department of Revenue Responsibilities

- Inter-county Utility Company Types



# Taxing District Examples



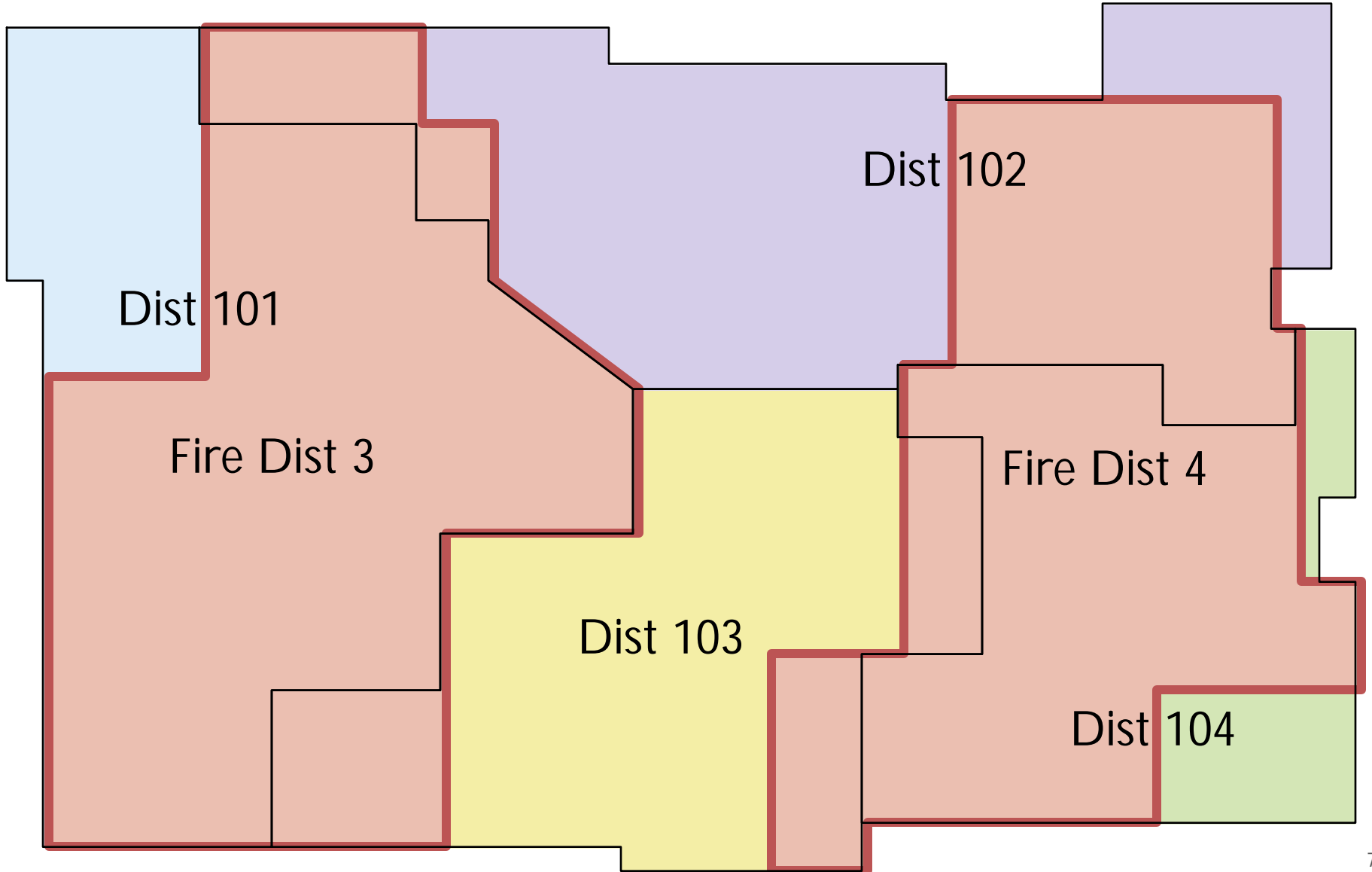


What is Apportionment?



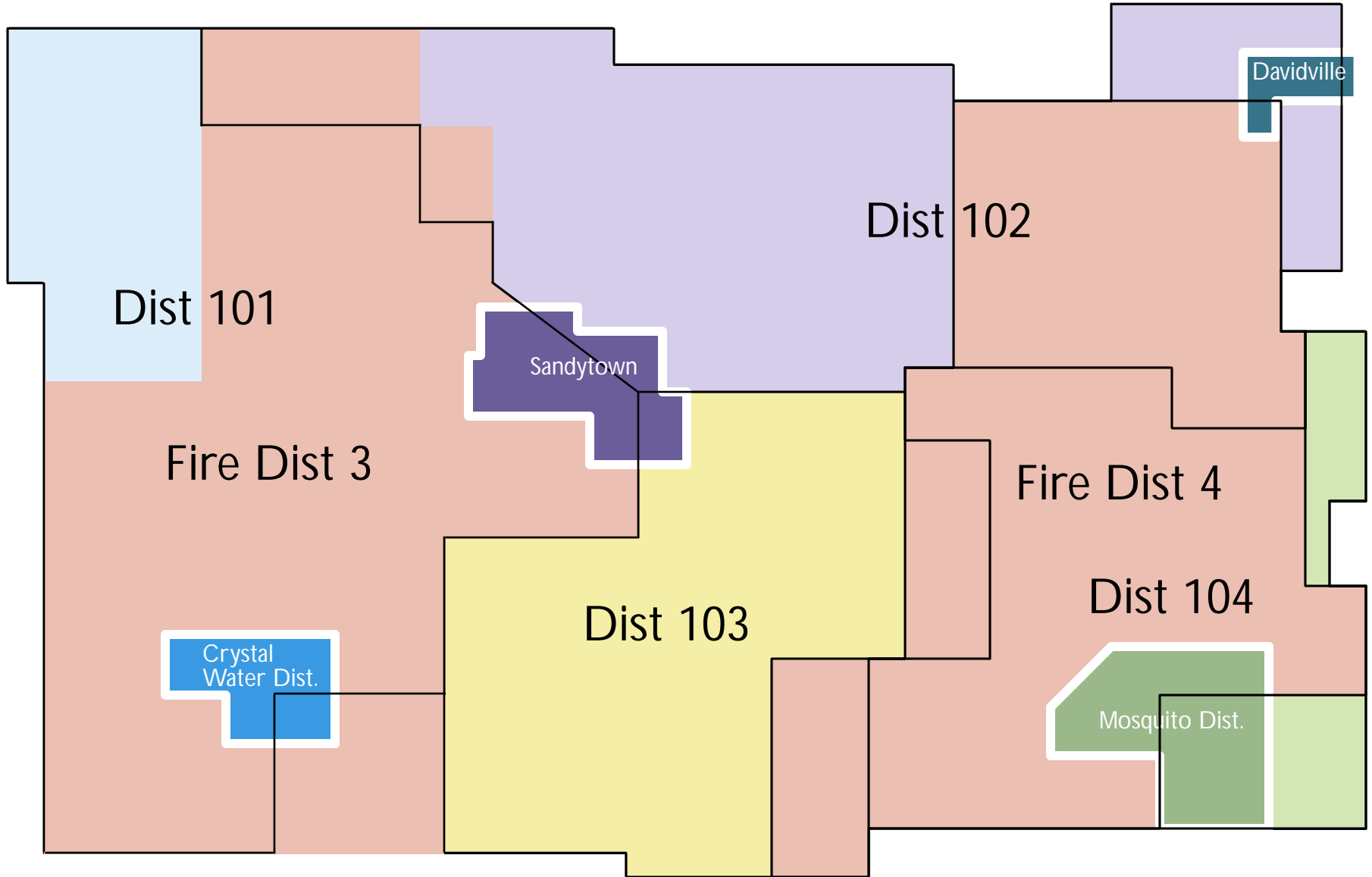
# Fire districts overlaid on school districts

Fire districts      School districts

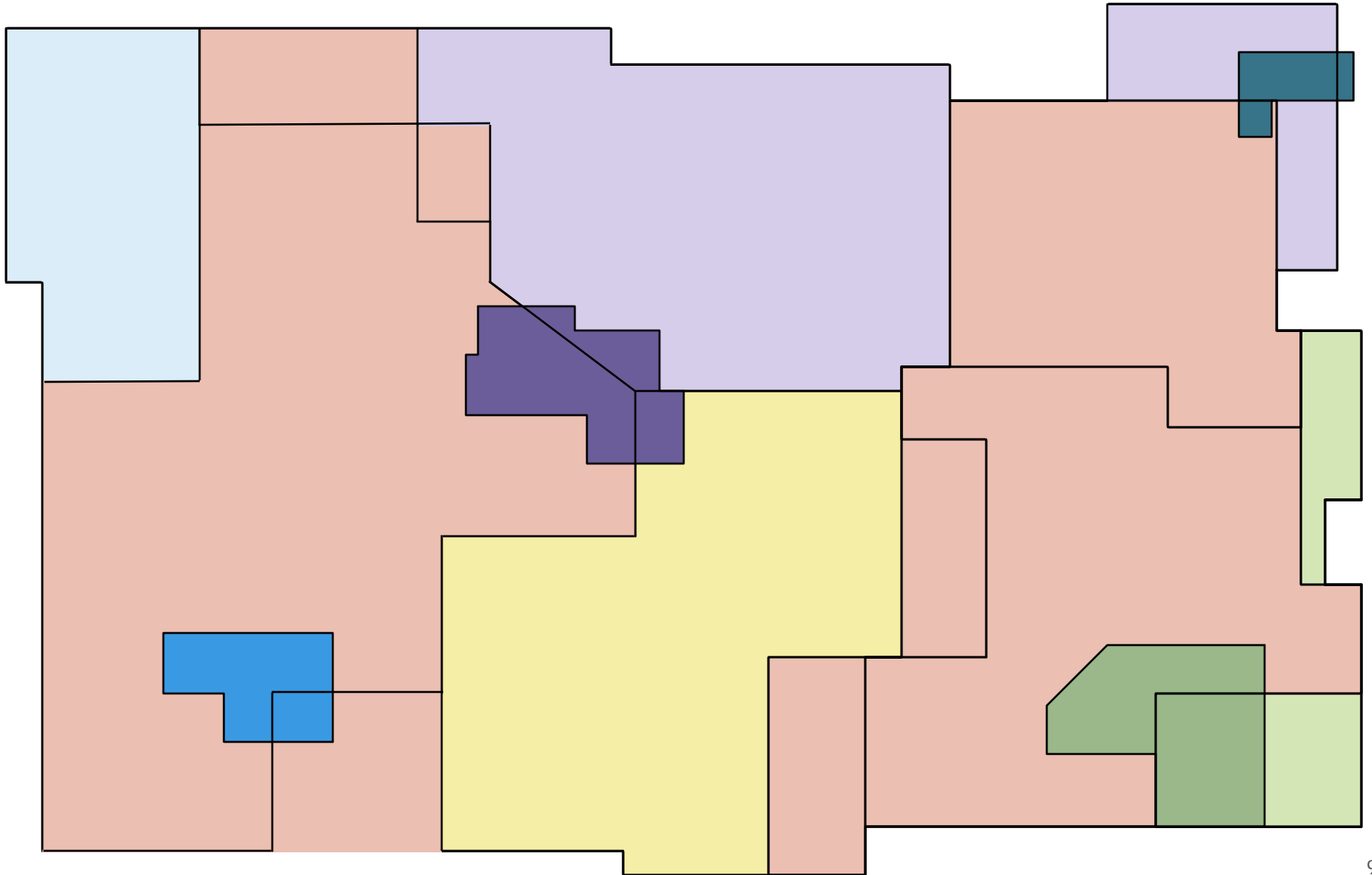


# Cities, water district, & mosquito district

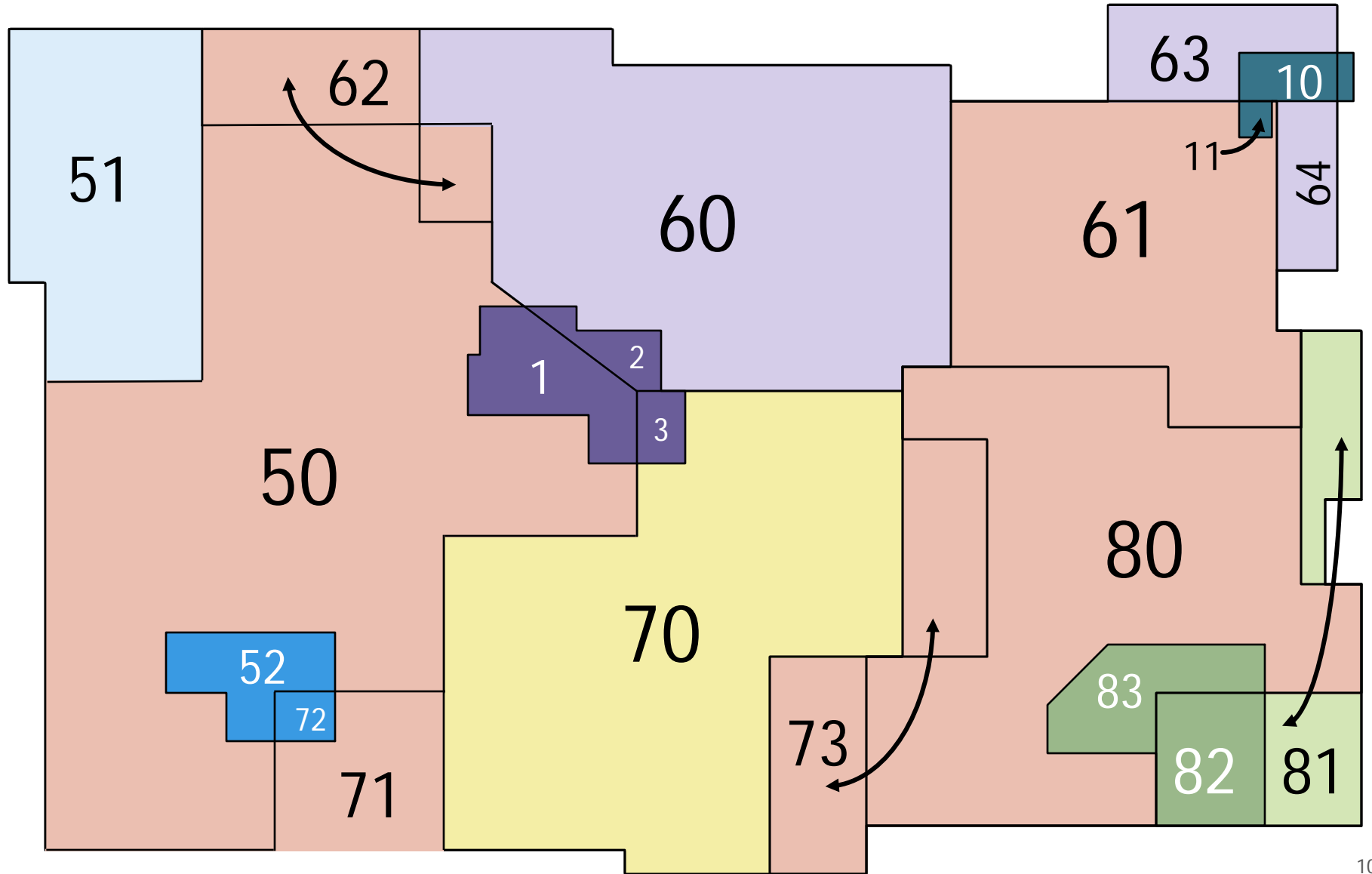
Fire districts      School districts



10 taxing districts overlap to form 24 polygons

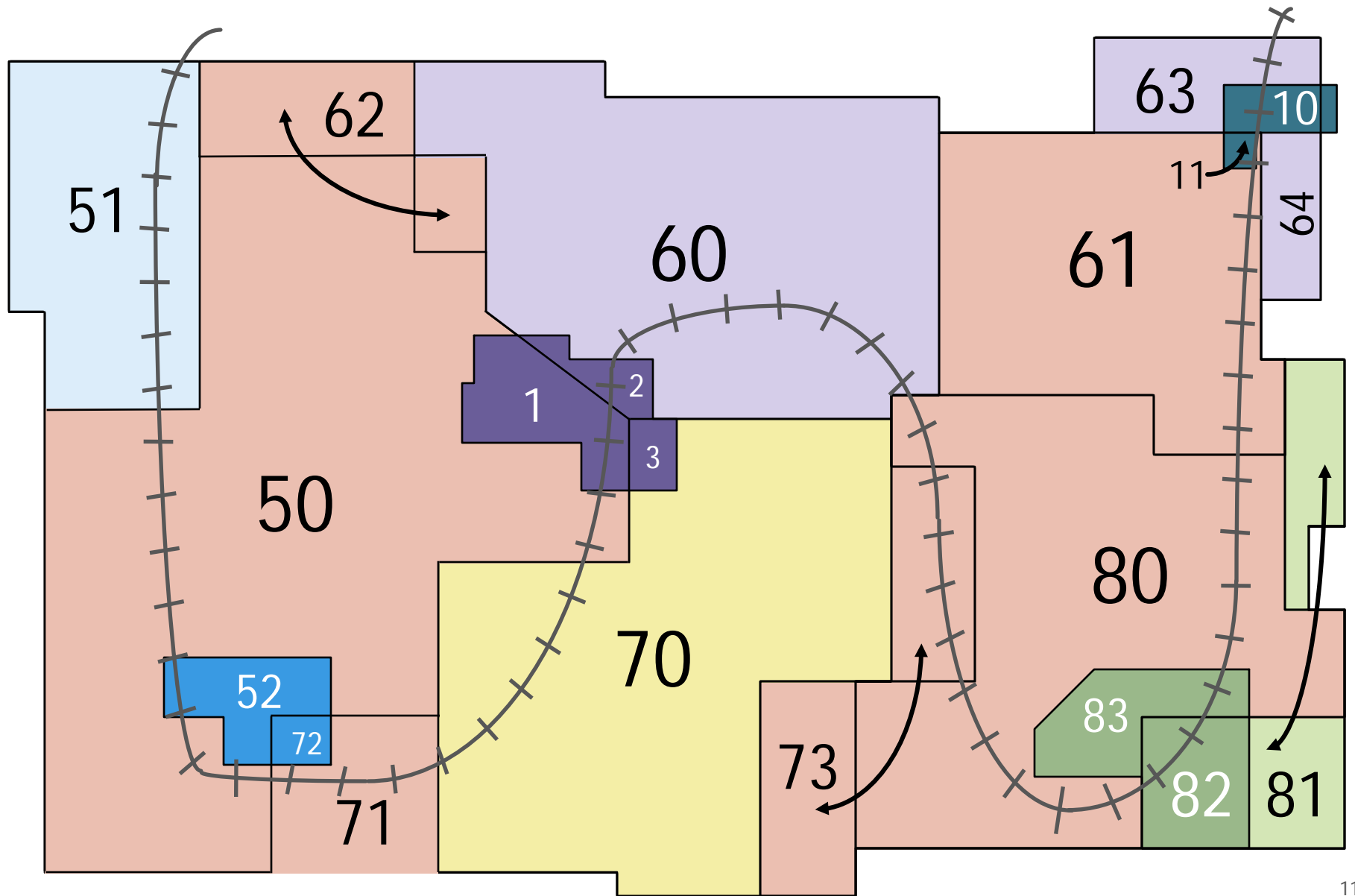


# Polygons numbered as tax code areas (TCA)



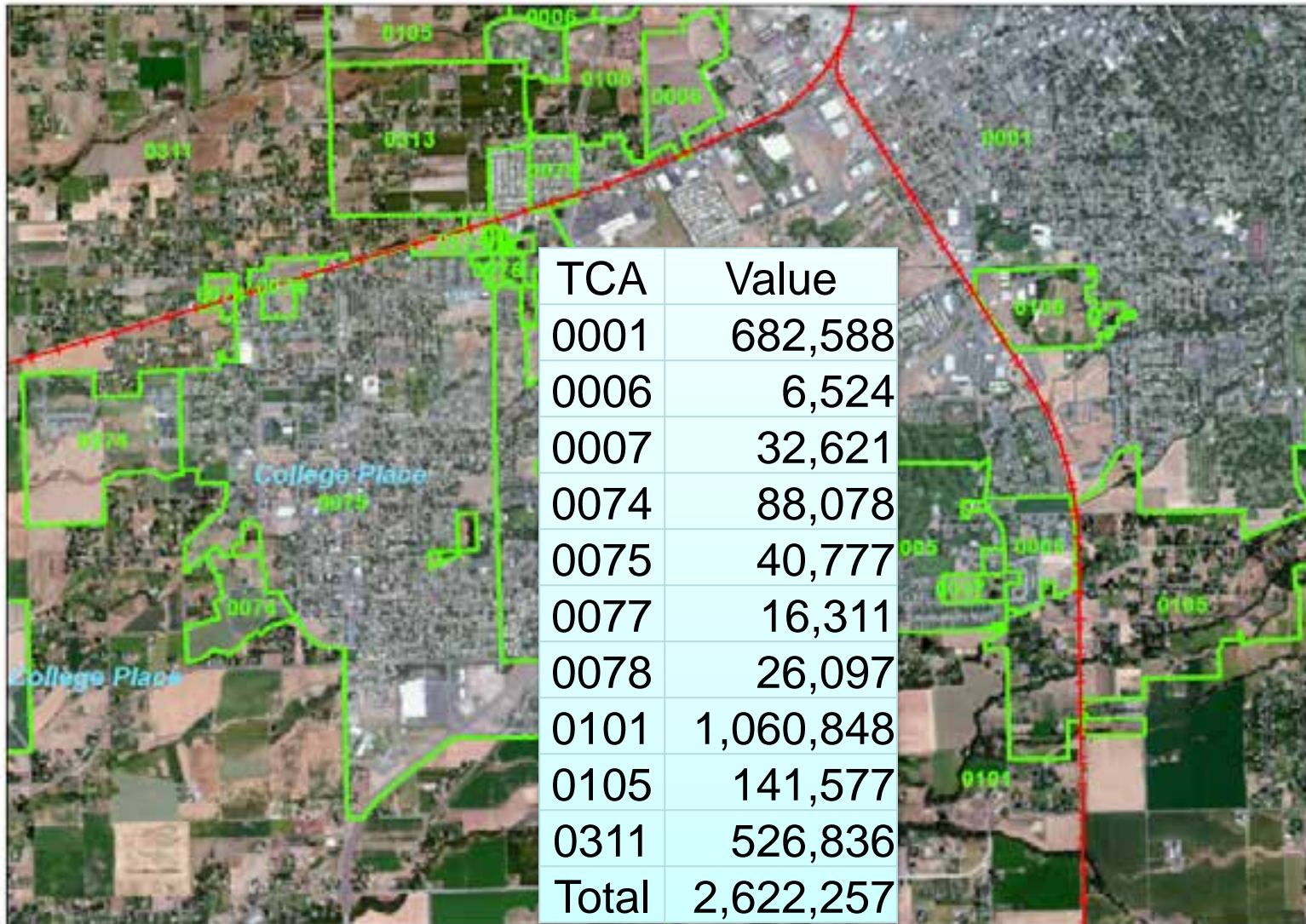


# Utility location (railroad)



# Utility location (*railroad*)

Walla Walla



# Utility Valuation GIS Program

What problems prompted the GIS program?

- Constantly changing taxing district boundaries
- Legislature changed taxing district annexation deadline
- Administration improvement opportunities



# Utility Valuation GIS Program

What are the goals for this program and how do they impact the Department and Taxpayers?

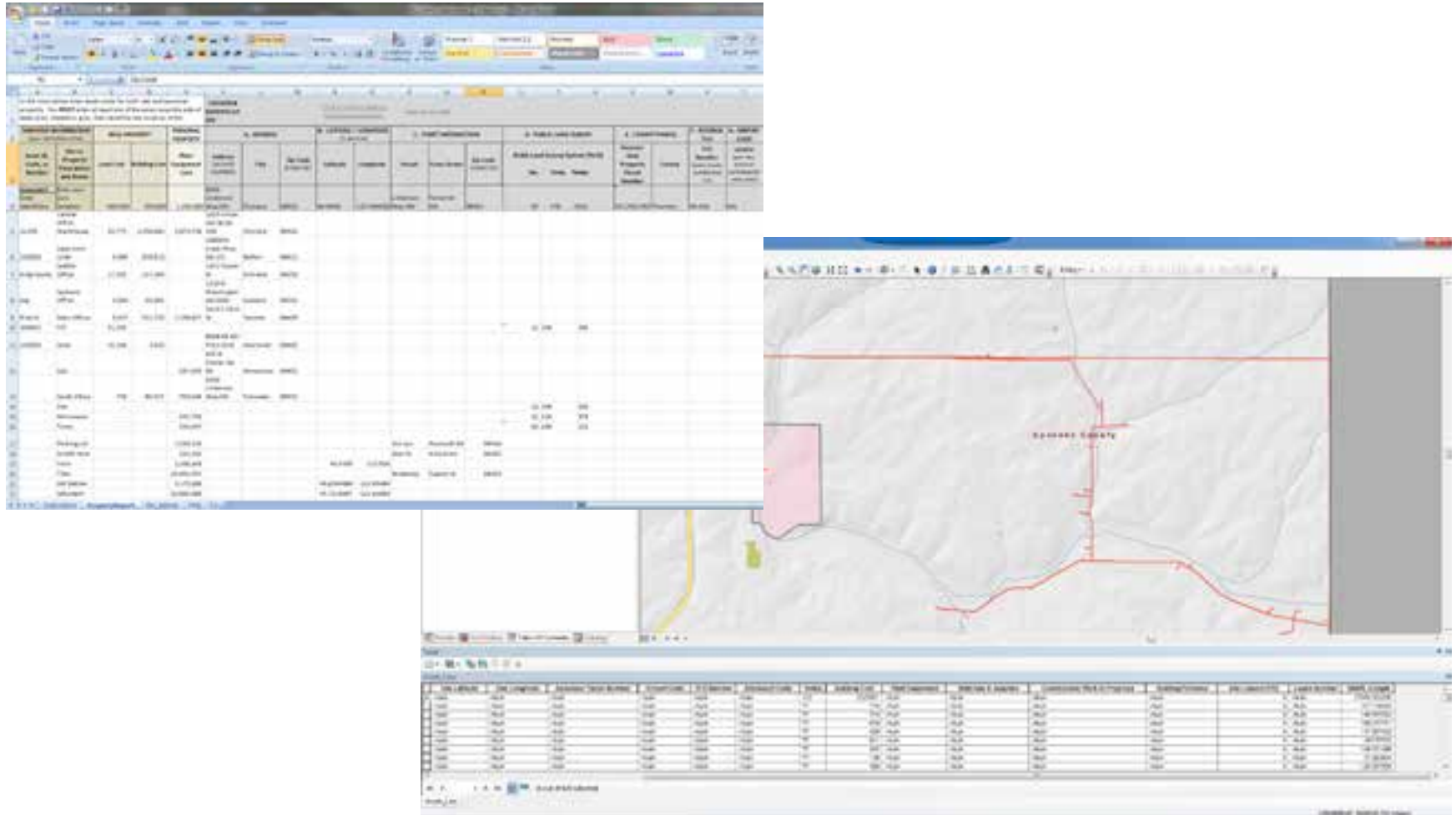
- Simplify reporting
- Improve accuracy
- Allow flexibility
- Save time for utility companies





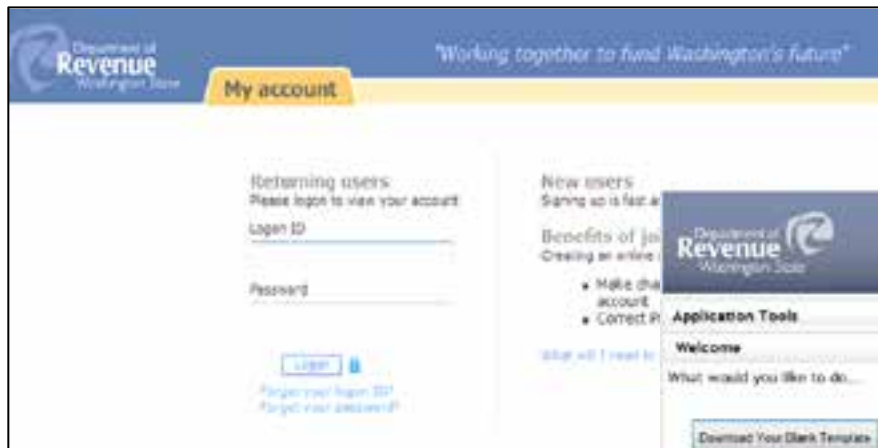
# Utility Valuation GIS Program

Assemble your Data – choose Excel, fGDB or Both!



# Utility Valuation GIS Program

## Uploading Data





# Utility Valuation GIS Program

## Searching for and Viewing Data

The image displays three screenshots from the 'Utilities Apportionment Reporting' GIS application, illustrating the search and viewing process.

**Top Left Screenshot:** Shows the 'Application Tools' sidebar with a search bar and a table of results. The table has columns for 'ID' and 'Site ID'. The value '1094224' is circled in red in the 'ID' column.

ID	Site ID
1094224	204003

**Top Right Screenshot:** Shows a map view of the same area. A red circle highlights a specific location on the map.

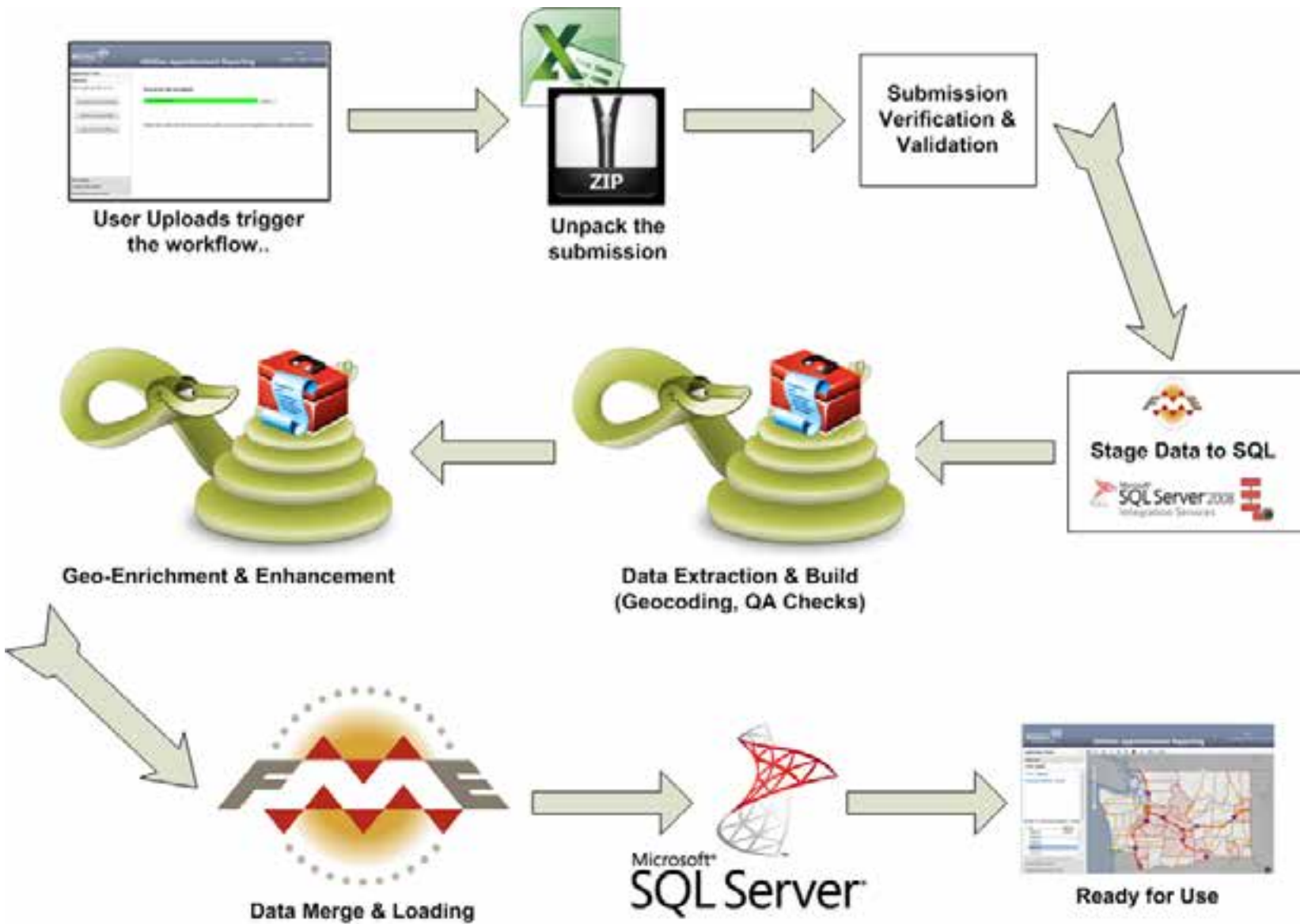
**Bottom Center Screenshot:** Shows an aerial view of the same location. A red circle highlights a specific utility asset. A popup window is visible, displaying details for the asset.

Apportionment ID	Asset ID	Asset Name	Asset Type	Asset Status
1094224	204003	1094224	1094224	1094224

# What makes it work... The Platform



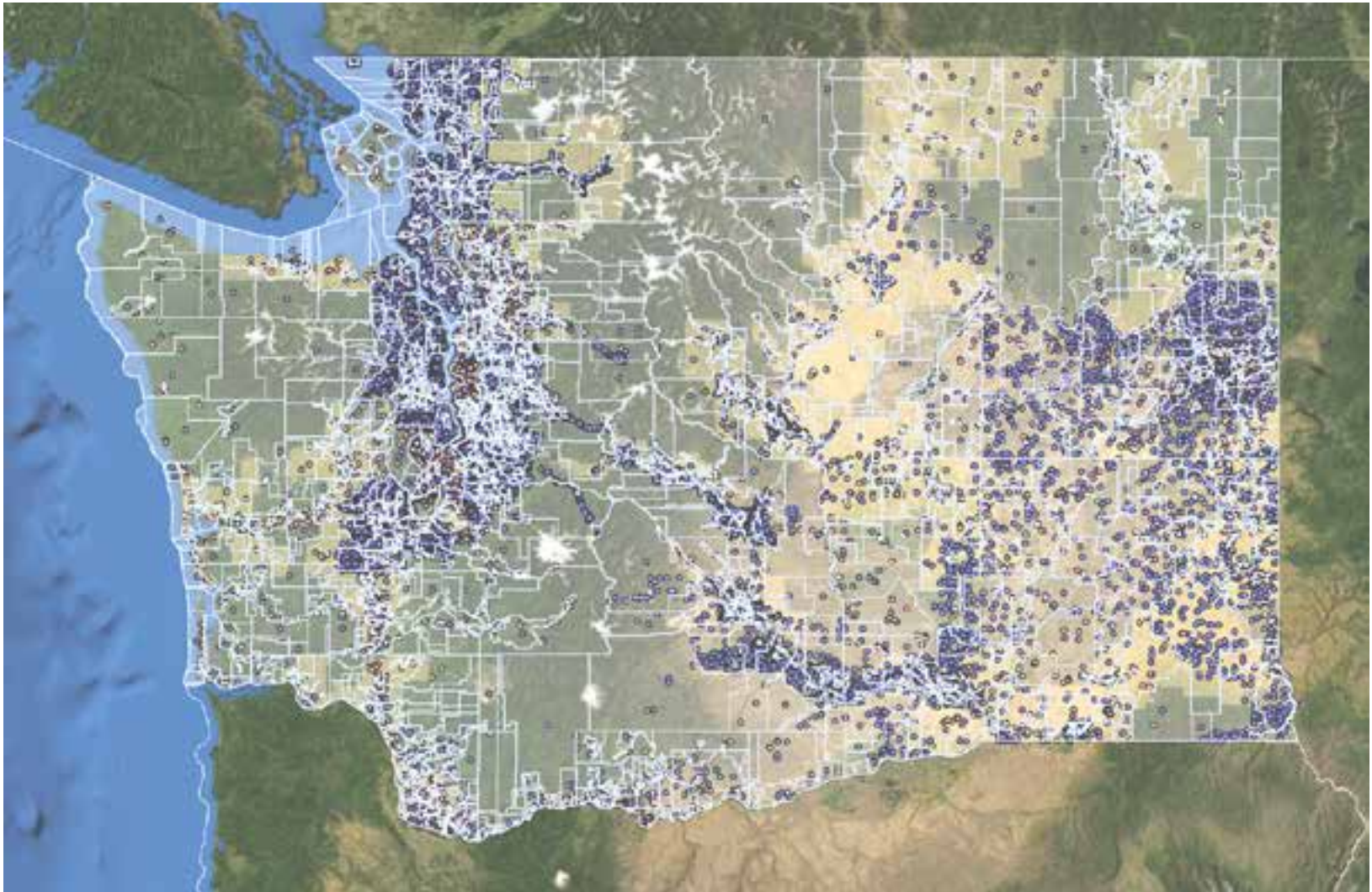
# How it works... The flow of data to Values...





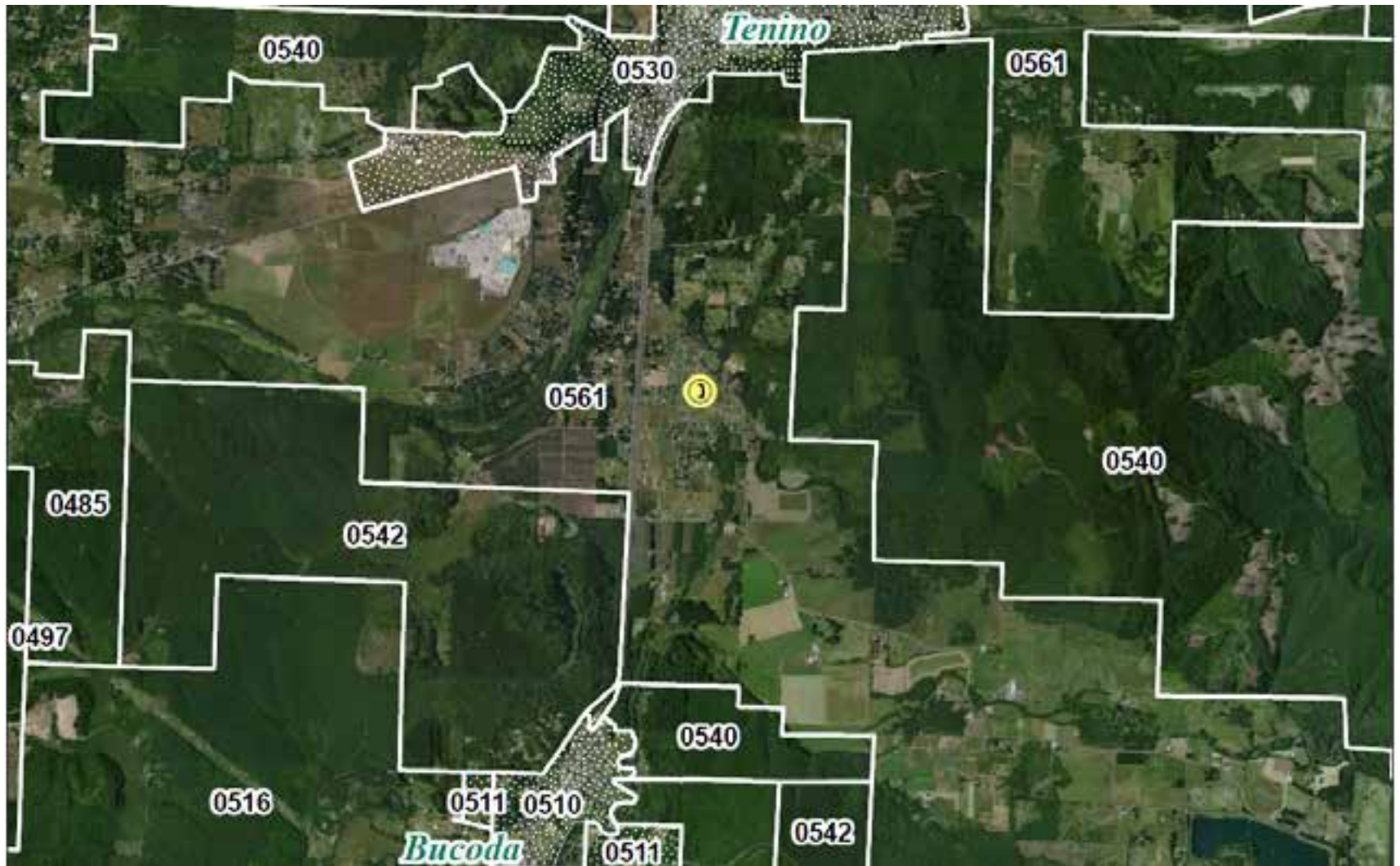
# Utility Valuation GIS Program

What all that data look like...



# Utility Valuation GIS Program

Combine Taxpayer and TCA Data





# Utility Valuation GIS Program

## GIS Fast Facts

- 135 companies filed with GIS Data last year
- 1.5 million locations reported
  - 23,091 miles of pipeline and natural gas distribution lines
  - 8,147 cellular telephone locations
  - 5,370 miles of railroad track
  - 112 airports
- \$18.6 billion assessed value distributed
  - 39 counties
  - 3,219 Tax Code Areas (TCA)





# Utility Valuation GIS Program

## What Problems does the GIS program Solve?

- Department and Taxpayer Timelines
  - ü Taxpayers don't need TCA boundaries
  - ü Taxpayers file sooner – average 30 days earlier
- Accuracy
  - ü Six methods to locate property
  - ü Spreads transmission or rail line value among TCAs
- Administration / Taxpayer Compliance Ease
  - ü Manual data entry eliminated
  - ü Duplicate regulatory reports minimized
  - ü Data readily available from existing systems



Questions

