

INTRODUCTION

- A LITTLE ABOUT US (...AND VIKINGS)
- THE **SITUATION** IN THE WORLD
- OUR **MISSION**
- OUR NETWORK
- CLOSING AND QUESTIONS

A LITTLE ABOUT US...

- TORSTEN AND BJÖRN



"Thor's stone"



*Bear =
defined as the oldest
name in Sweden*

A LITTLE ABOUT US...

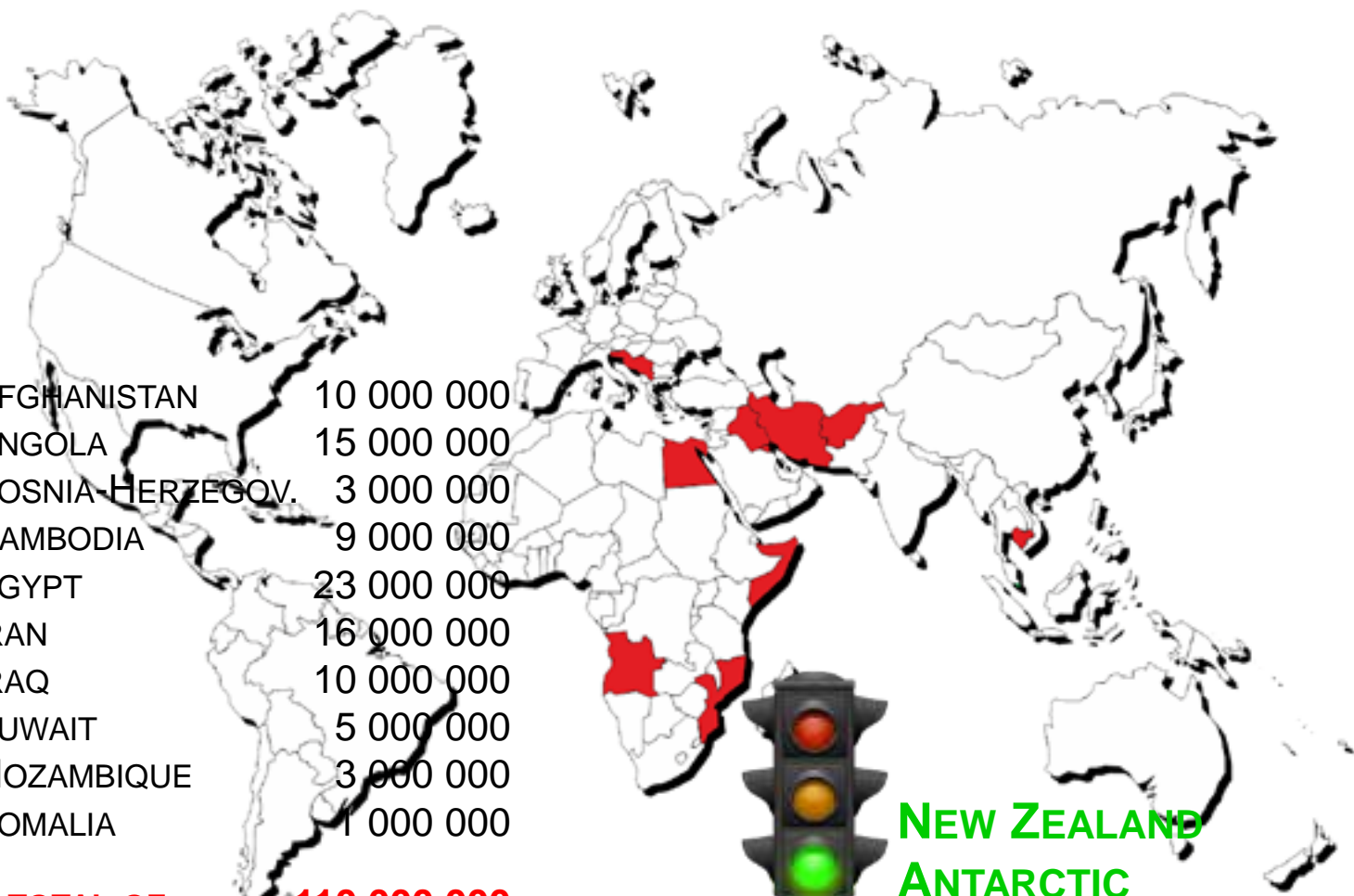
- TORSTEN AND BJÖRN
- “NORMAL” FAMILY LIVES (ONE DIVORCED, ONE STILL MARRIED)
- FAMILIES FIRST... THEN MUSIC(T) & HUNTING(B)
- STOCKHOLM - SWEDEN
- SOFTWARE COMPANY (LTD. 40 EMPLOYEES, BUSINESS DEVELOPERS, PM, SW ARCHITECTS AND DEVELOPERS + OWN PRODUCTS)
- 30% WORKS WITH EOD (MIL.) / DE-MINING (CIV.)
PRODUCT LINE (70% OF THE REVENUE, LAST THREE YEARS)

TODAY'S TOPIC

FIVE THOUSAND MINES IN A DEPOT IS "LOGISTICS";
5,000 DEPLOYED MINES IS "GEOGRAPHY"...



THE SITUATION

A world map with several countries highlighted in red. These include Afghanistan, Angola, Bosnia-Herzegovina, Cambodia, Egypt, Iran, Iraq, Kuwait, Mozambique, and Somalia. A traffic light is positioned in the lower right quadrant of the map, with its green light illuminated.

AFGHANISTAN	10 000 000
ANGOLA	15 000 000
BOSNIA-HERZEGOV.	3 000 000
CAMBODIA	9 000 000
EGYPT	23 000 000
IRAN	16 000 000
IRAQ	10 000 000
KUWAIT	5 000 000
MOZAMBIQUE	3 000 000
SOMALIA	1 000 000

A TOTAL OF +110 000 000

**NEW ZEALAND
ANTARCTIC**

THE SITUATION



- Landmines affect 88 countries in the world today
- To deploy one landmine: 3 - 10 USD
- To clear one landmine: 50 - 1,000 USD
- For every mine cleared 20 are laid
- Close to 90% of the casualties are civilians
- Of these are 30-40% children below 15 years of age
- More than 2,000 people a month are injured or killed by landmines
- ...one person every 20 minutes (approx. 300 during the ESRI UC)

OUR MISSION

- CHEAPER (...COST EFFICIENT)
- SAFER (...LESS CASUALTIES)
- HIGHER QUALITY (...LIABILITY)
- MORE EFFICIENT (...FASTER)

OUR MISSION

- 6 EGG YOLKS
- 3/4 CUP WHITE SUGAR
- 2/3 CUP MILK
- 1 1/4 CUPS HEAVY CREAM
- 1/2 TEASPOON VANILLA EXTRACT
- 1 POUND MASCARPONE CHEESE
- 1/4 CUP STRONG BREWED COFFEE
- 2 TABLESPOONS RUM
- 3 OUNCE LADYFINGER COOKIES
- 1 TABLESPOON UNSWE. COCOA POWDER



OUR MISSION



Toolbox Implementation for Removal of Anti-personnel Mines, Sub-munitions and UXO

OUR MISSION



Toolbox Implementation for Removal of Anti-personnel Mines, Sub-munitions and UXO

MOST IMPORTANT OF ALL...?



Where are the damned mines?

...a question that involves GIS



OUR MISSION

- FIELD DATA COLLECTION TOOL (T-IMS)
- TASK- AND GIS-CENTRIC
- ORDNANCE DATABASE
- STANDARDIZED DATA STRUCTURES
- WILL WORK IN APPROX. 85% OF CURRENT MISSIONS
- OFF-LINE (/ ON-LINE)
- ADAPTABLE TO “ANY” HUMANITARIAN DEMINING ORG.

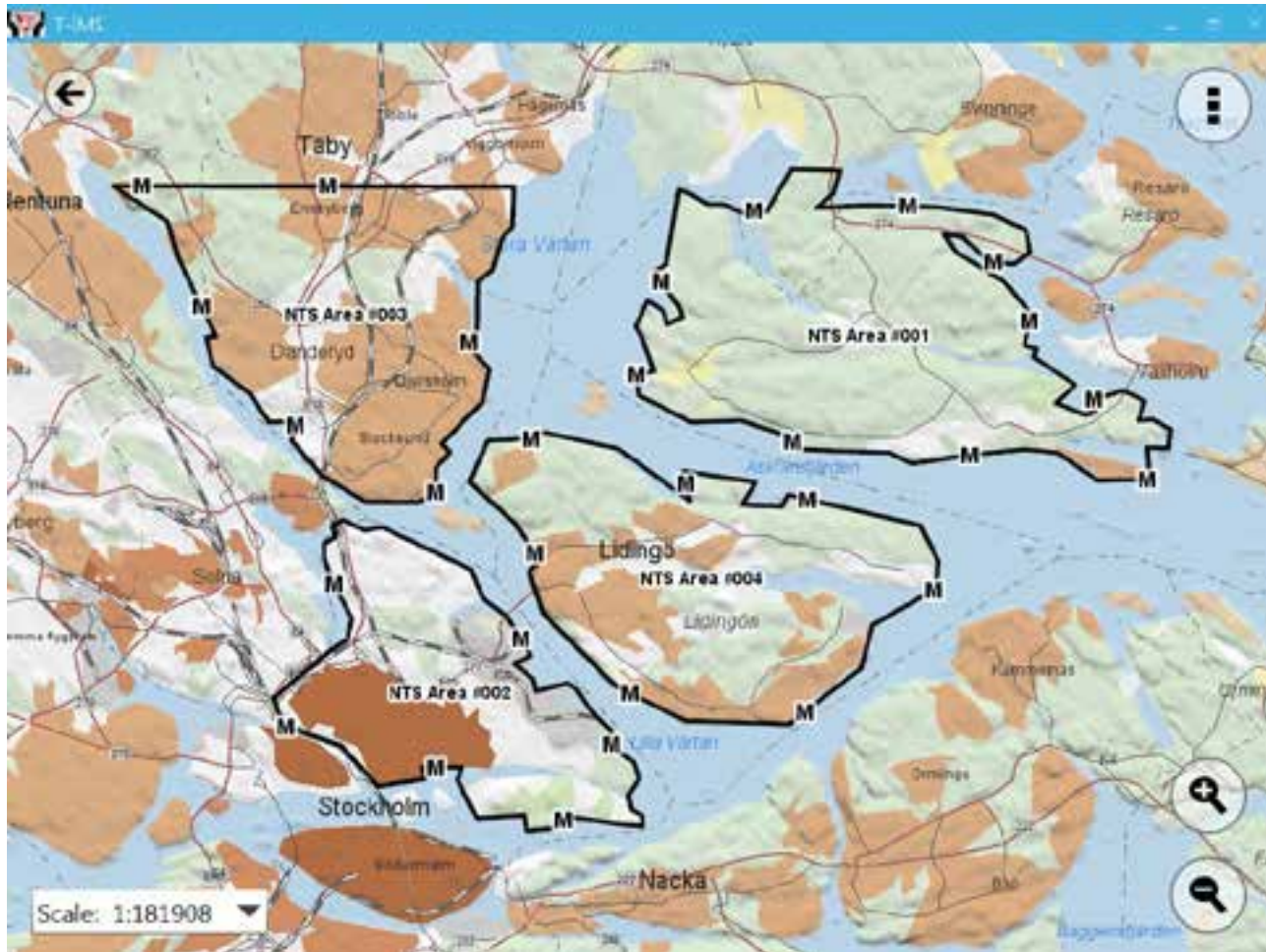
THE SYSTEM

- WINDOWS 7 (OR LATER) 64BIT VERSIONS
- SYSTEM REQUIREMENTS: RAM 4GB, HDD 200GB, CPU 2GHZ, XGA 1024x768
- ENTIRELY DEVELOPED IN MICROSOFT C# .NET
- ESRI ARCGIS RUNTIME .NET 10.2.3
- MICROSOFT SQL SERVER VERSION 2008 OR LATER
- TELERIK DATA ACCESS COMPONENTS AND REPORTING
- USER INTERFACE BUILT FOR “FIELD USE” WITH FULL TOUCH SUPPORT IN DATA CAPTURE AND MAPPING
- FULL SUPPORT FOR THE EOD AND DEMING PROCESS

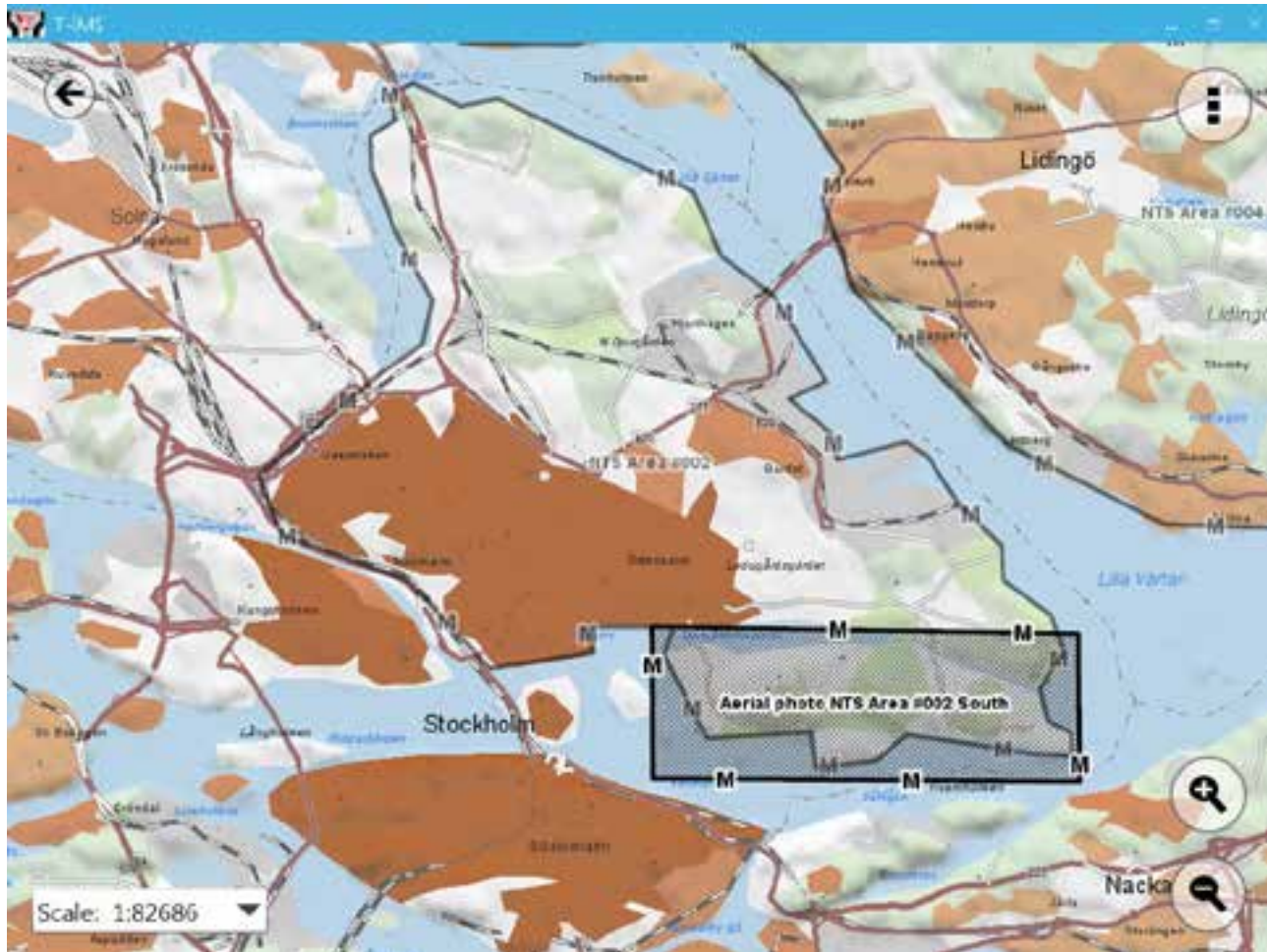
THE SYSTEM(S)



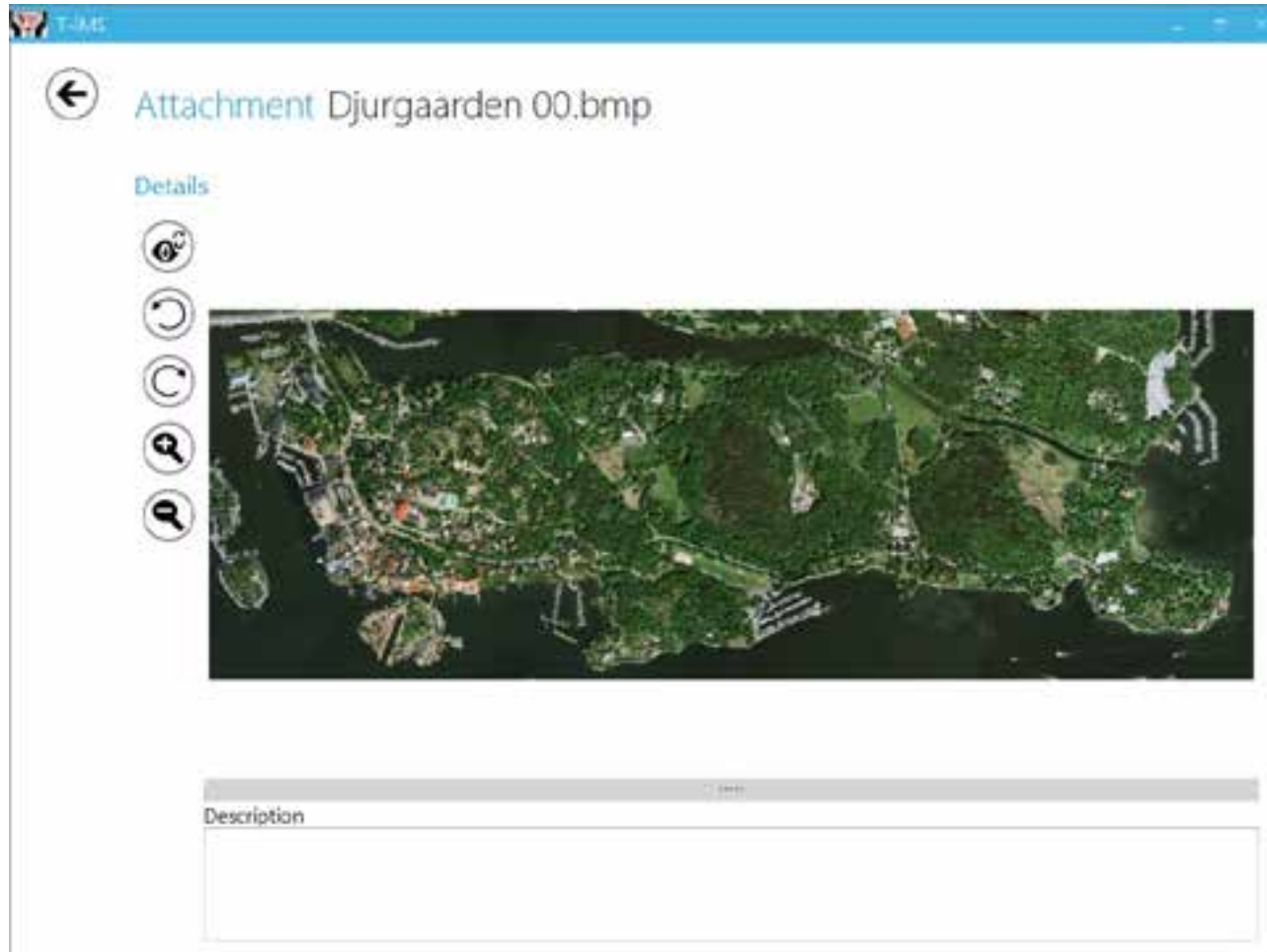
ONE SCENARIO



ONE SCENARIO



ONE SCENARIO




ONE SCENARIO

T-145

← Attachment Analysis 347 Dg 01.bmp

Details

- 🔍
- 🔄
- 📏
- 📍
- 📷



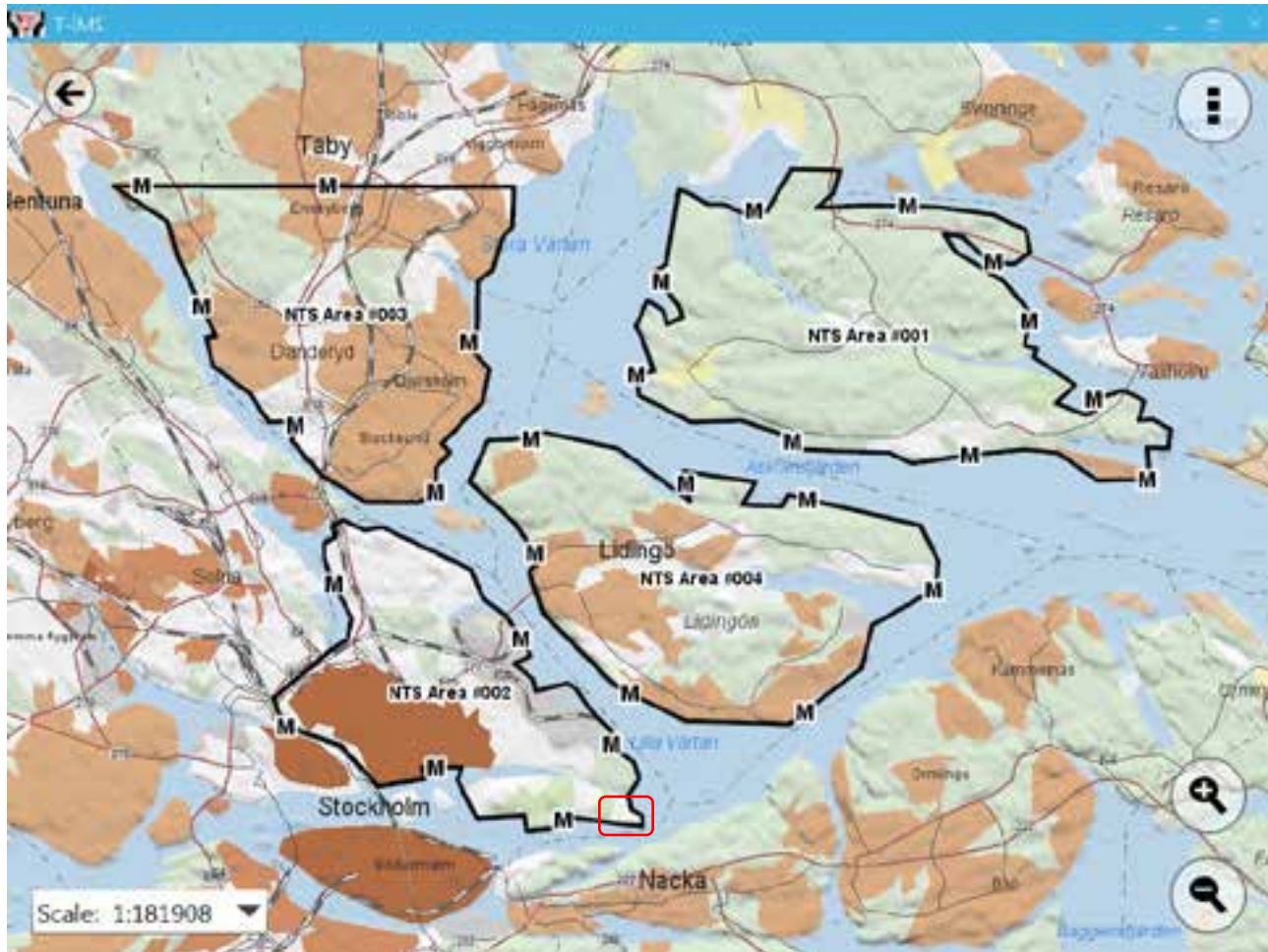
Description

General analysis results on the east part of the island: The whole Battle area #01 is highly contaminated with UXOs and the central (open) part has most likely tactical minelines (north-south extension?).

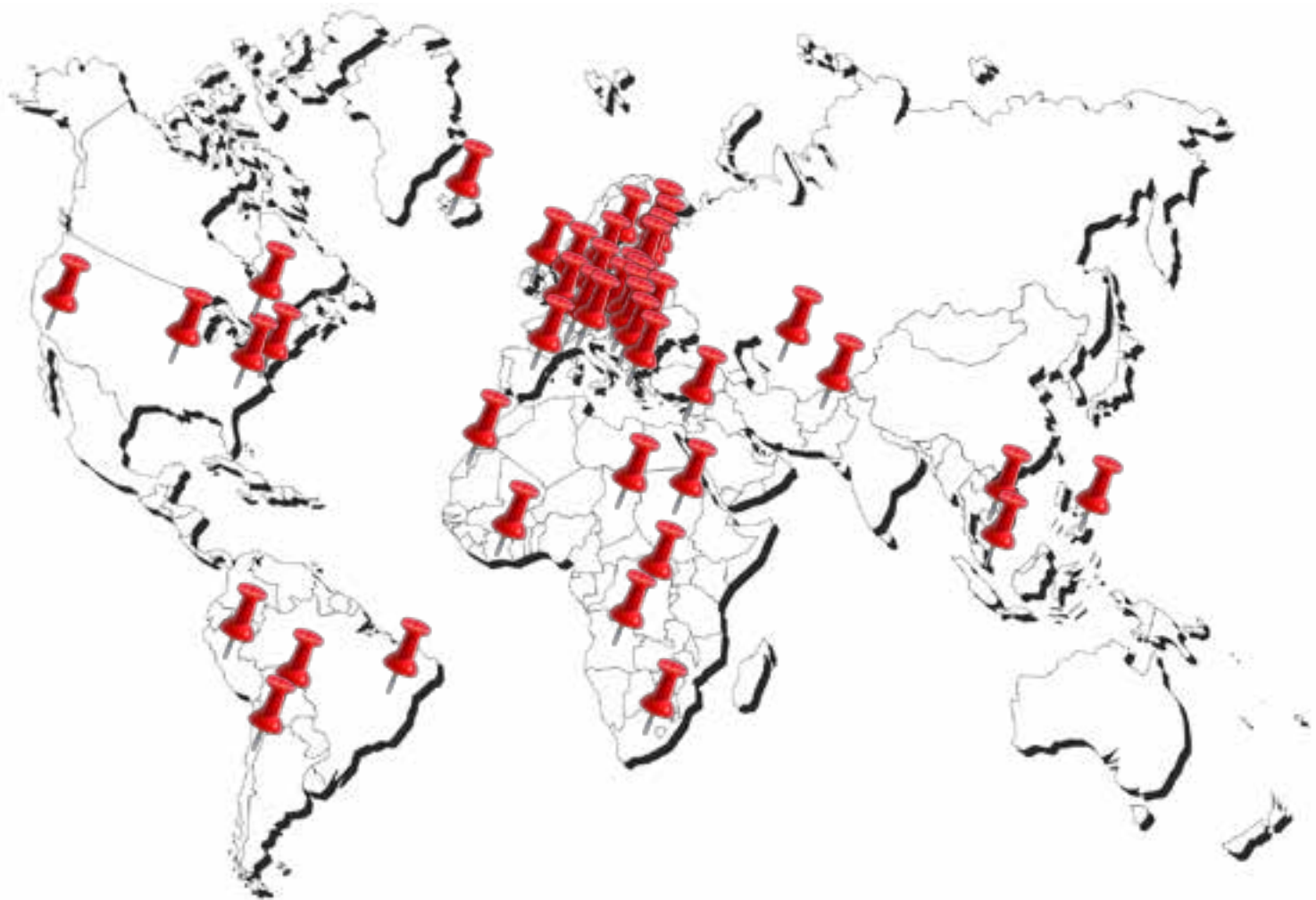
ONE SCENARIO



ONE SCENARIO



BEEN THERE... DONE THAT...



ASSOCIATES & PARTNERS

- ESRI SWEDEN (SILVER PARTNER, GOING FOR GOLD...)
- MICROSOFT
- GICHD (GENEVA INT' CENTRE FOR HUM. DEM.)
- UNMAS (UN MINE ACTION SERVICE)
- EU-COMMISSION (25 PARTNER COUNTRIES)
- SWEDISH ARMED FORCES (15 PARTNER COUNTRIES)
- CROMAC
- BHMAC
- PILOT DEC. 2014 => LAOS / SOUTH SUDAN

CLOSING WORDS...

- WE ARE GIS
- WE KNOW HUMANITARIAN DEMINING
- WE HAVE THE NETWORK
- LET US DEMO...
- FEEL FREE TO USE THE ABOVE...

QUESTIONS...?



STILL CONFUSED BUT ON A HIGHER LEVEL...?