



Urban Neighborhood Analysis & Planning: University Collaboration

Kyle A. Johnson & Lisa M. Dunaway, AICP, LEED AP



About Us

Kyle A. Johnson

- GIS Coordinator for Delaware County, Indiana

Lisa M. Dunaway

- Instructor of Urban Planning, Ball State University, Muncie, Indiana
- AICP, LEED AP

The “Neighborhood Studio”



Photo: L. Dunaway

“Immersive Learning”

To be considered immersive, a project must:

- engage participants in an active learning process that is student-driven but guided by a faculty mentor
- produce a tangible outcome or product, such as a business plan, policy recommendation, book, play, or DVD
- involve at least one team of students
- include community partners and create an impact on the larger community as well as on the student participants
- help students define a career path or make connections to a profession or industry

Neighborhood Action Plans

- Whitely
- South-Central
- Old West End
- Blaine/Southeast



Photo: L. Dunaway

GIS Application

- ArcGIS Online, ArcGIS App for iOS/Android
- Feature Services Initially hosted using Delaware County's ArcGIS Server, main ArcSDE-SQL geodatabase
- First application had all layers published as one feature service and resulted in performance issues



Source: Delaware County GIS Dept.

App Features

- Included existing local data to update, new data as determined by students necessary for their plan.
- Separate ArcSDE Database, Split each map layer into separate feature service - Increased performance
- ArcGIS Online for Organizations released
 - Moved feature services to hosted on ArcGIS Online - even faster!



Source: Delaware County GIS Dept.

Final Action Plan

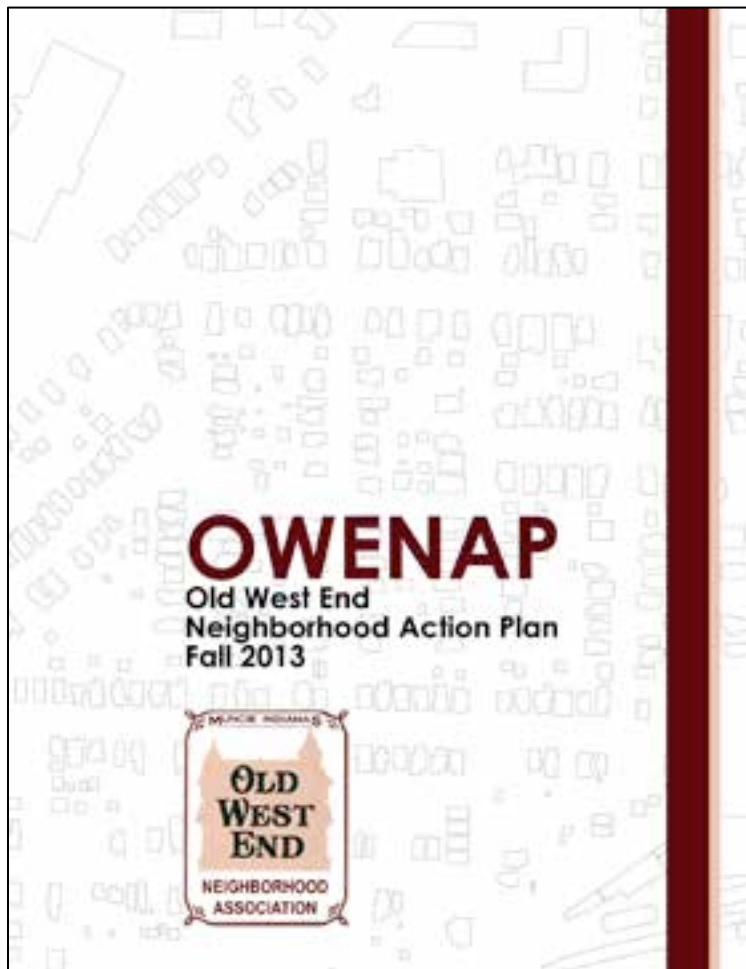


Table of Contents

Executive Summary	1
Planning Process	3
OWENAP Profile	5
Components of this Plan	7
History	9
Demographics	11
Existing Conditions	16
Goals & Initiatives	43
Economy	45
Business Variety	46
Chamber of Commerce	51
Employment Opportunities	53
Local Grocery Store	55
Land Use Initiatives	65
Increasing the Number of Live-Work Units	66
Strengthening Code Enforcement	69
Vacant Property Rehabilitation	71
Utilizing Non-Traditional Markets	73
Quality of Life	83
Affordability and Cost of Living	84
After School Programs, Community Center & Job/Skill Programs	87
Community Strength & Relationships	90
Front Yard Activities	94
Taking Control of the Stray Cat Population	97
Trees, Beautification & Connections to the River	101
Infrastructure	115
Bike Lanes	116
Green Infrastructure	118
Parking	121
Public Art	124
Sidewalks and Curbs	127
Street Conditions	130
Street Lighting	132
Wayfinding and Signage	135
Housing & Living	153
Sight Removal and Historic Preservation	154
Bringing Rental Properties Up to Code	156
Trash in Alleys	161
Safety	169
Blight and Crime	170
Increase Police Presence	173
Speed Enforcement	177
Next Steps	189
Meeting Activities	191
Appendices	193
Federal Funding Sources	194
State Funding Sources	201
Local Funding Sources	204
Glossary	209

PLAN 301 neighborhood studio | ball state university

Goals & Initiatives

Goals & Initiatives

Goals

At the first neighborhood meeting, residents voiced the improvements they would like to see in the OWE, which the students later grouped into different “goal” groups of related improvements. The six goal groups include: Housing and Living, Land Use, Infrastructure, Safety, Economy, and Quality of Life. The improvements requested by the residents became the initiatives under each goal.

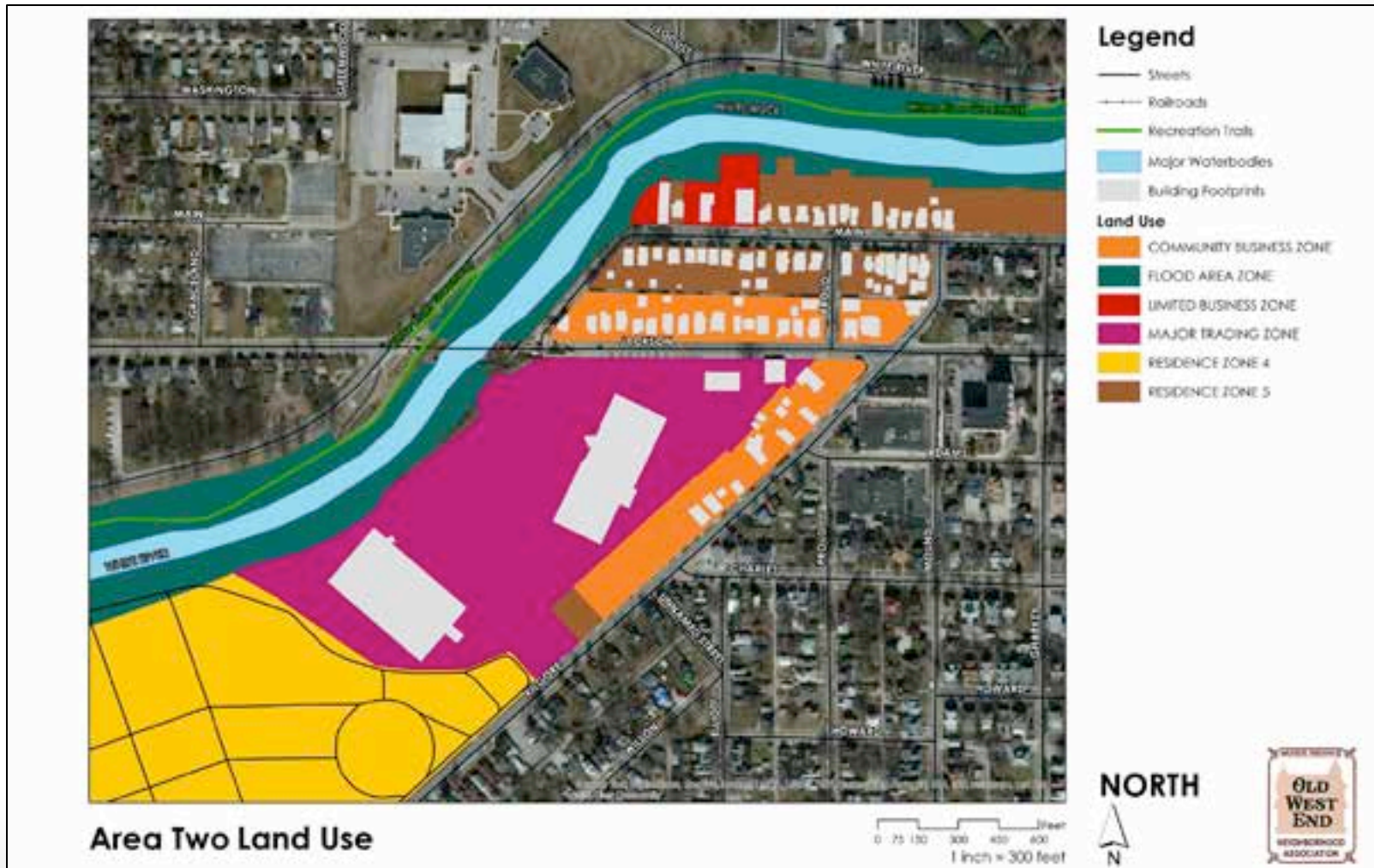
Initiatives By Priority

Initiatives were put into priority groups based on resident’s preferences of needs in the Old West End. Residents had the option to prioritize the initiatives based on what they believed needed addressed first using an online survey. Each position that the residents voted on was then assigned a point value. The values were added up and averaged in order to find out the priority level. In total there are three priority levels: those that are top priority, intermediate priority, and low priority.

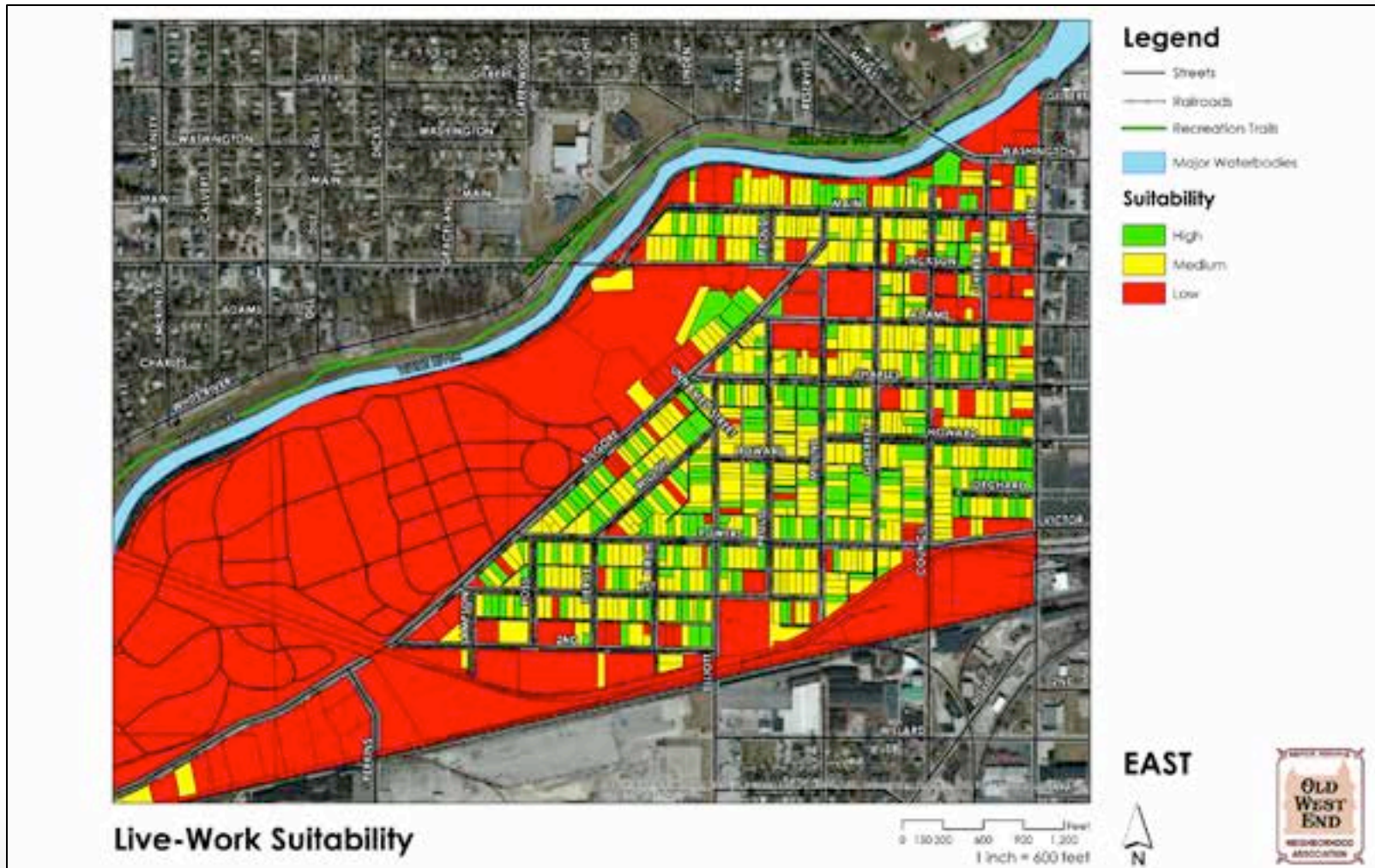
The five top priority initiatives can be seen in green in the graphic to the right. The top initiative

-
- Blight Removal & Historic Preservation
 - Blight & Crime
 - Vacancy Rehabilitation
 - Sidewalks & Curbs
 - Bringing Rentals up to Code
 - Street Lights
 - Street Trees, Beautification & Connection to the River
 - Street Conditions
 - Code Enforcement
 - Local Grocery Store
 - Trash in Alleys
 - Community Strength and Relationships
 - Increase Police Presence
 - Community Center & After School Activities
 - Speed Enforcement
 - Green Infrastructure
 - Public Art
 - Bike Lanes
 - Employment Opportunities
 - Wayfinding & Signage
 - Affordability/Cost of Living
 - Business Diversity
 - Front Yard Activities
 - Parking
 - Live/Work Units

Inventory & Analysis Maps



Suitability Maps



Priority Maps



Blight & Crime Map



Lessons Learned

- Understand multi-user editing of feature services, and what affects performance.
- Split map layers into separate services.
- Separate web-editing geodatabase from main database.
- Utilize ArcGIS Online hosting, if possible.



Thank you!

QUESTIONS?