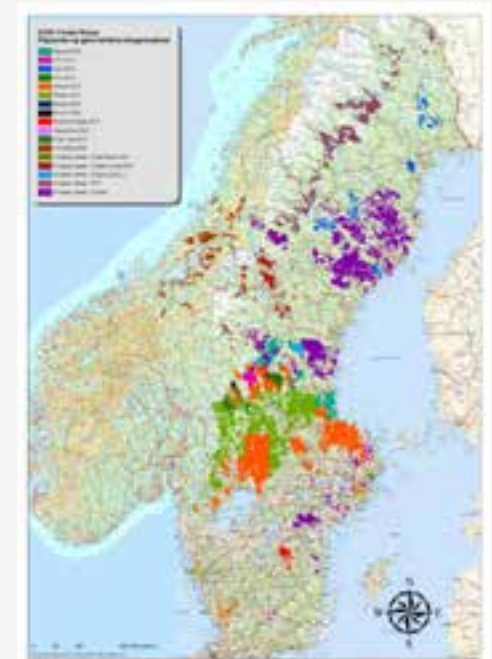


Thinning Index

Jenni Ljunglöf
Adrian Madejczyk

COWI As

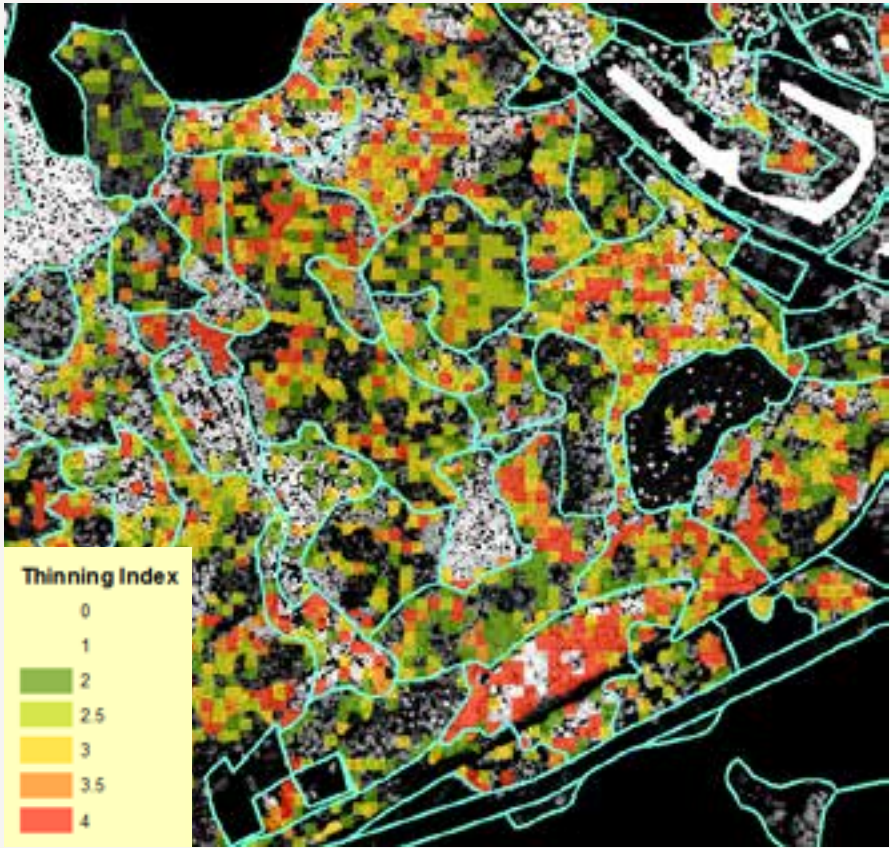
- COWI Forest and Mapping
- Kongsberg, Norway.
- Develop and produce products for forestry
- Mainly in Scandinavia
 - but also in South America and Asia



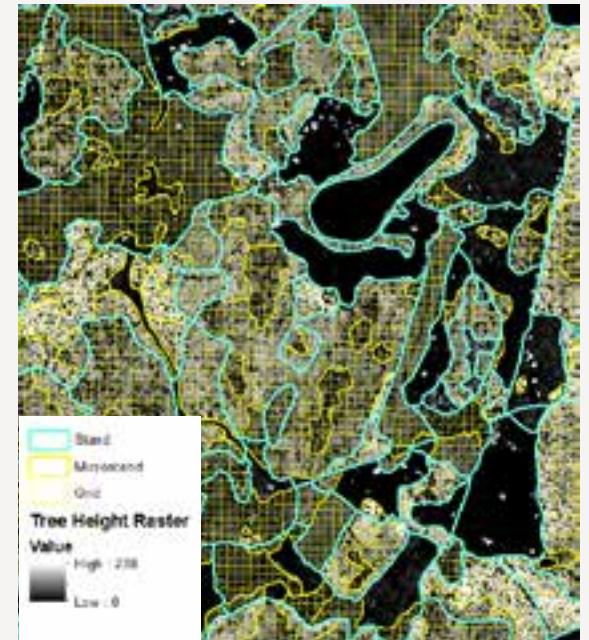
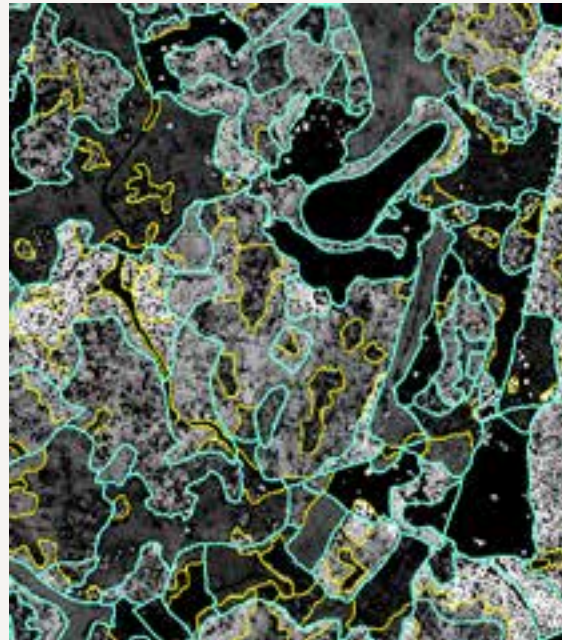
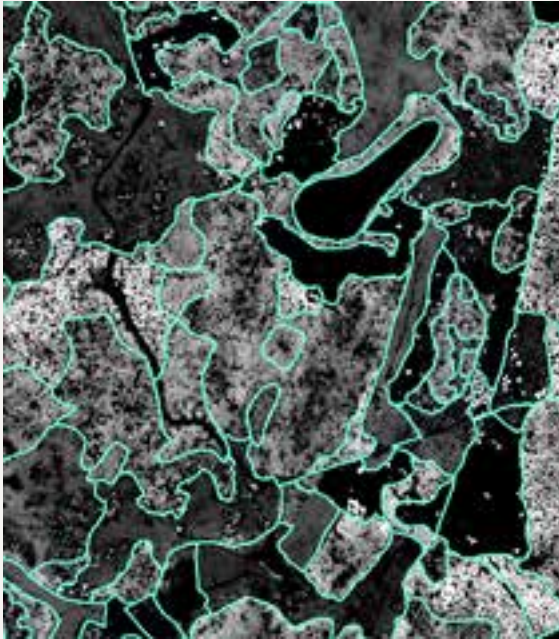
Why Thinning Index?

- › Limited time interval where forest is suitable for thinning
 - › Hard to know when
- › Where should we thin?
 - › Which stands?
 - › Whole stands or parts of stands?
 - › Multiple stands with thinning need in the same area? Increase efficiency?
- › Thinning index independent of stand borders
 - › Important principle

Result



How does it work?

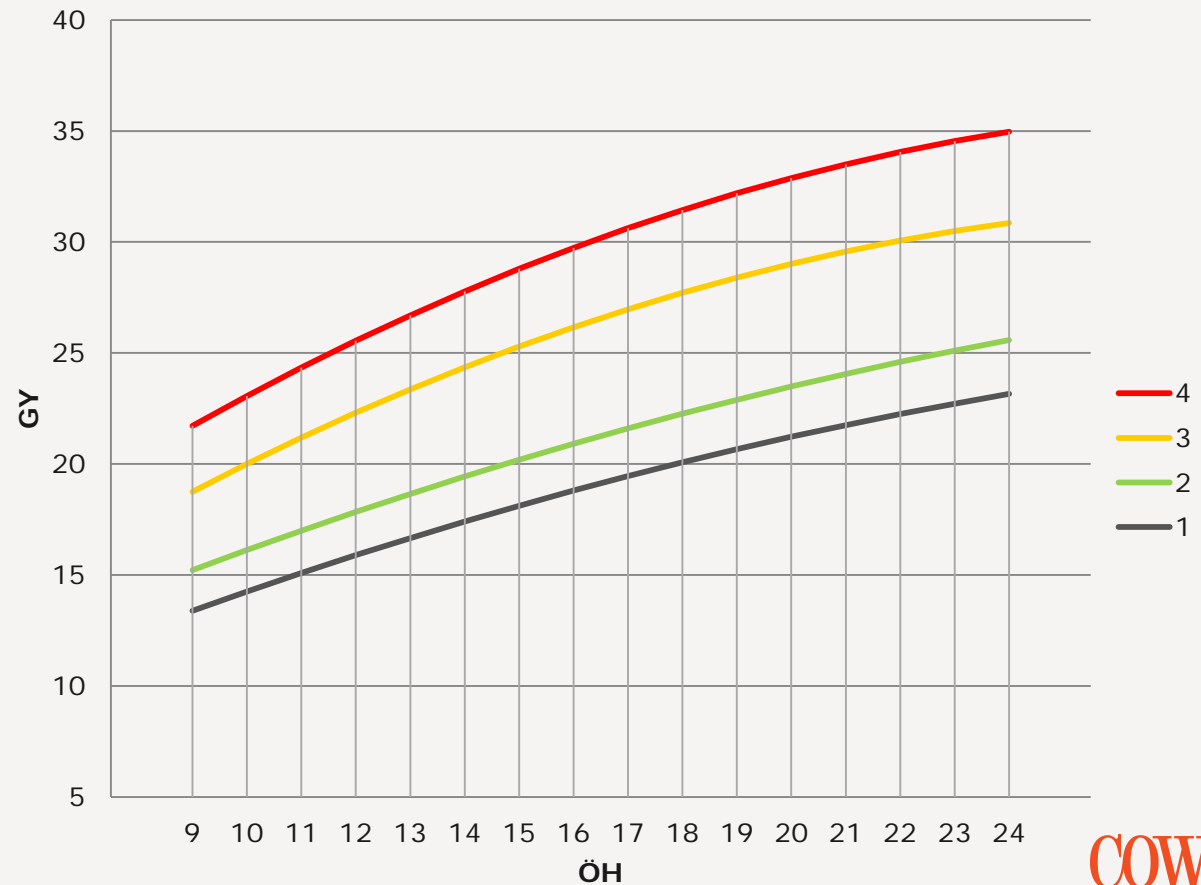


How does it work?

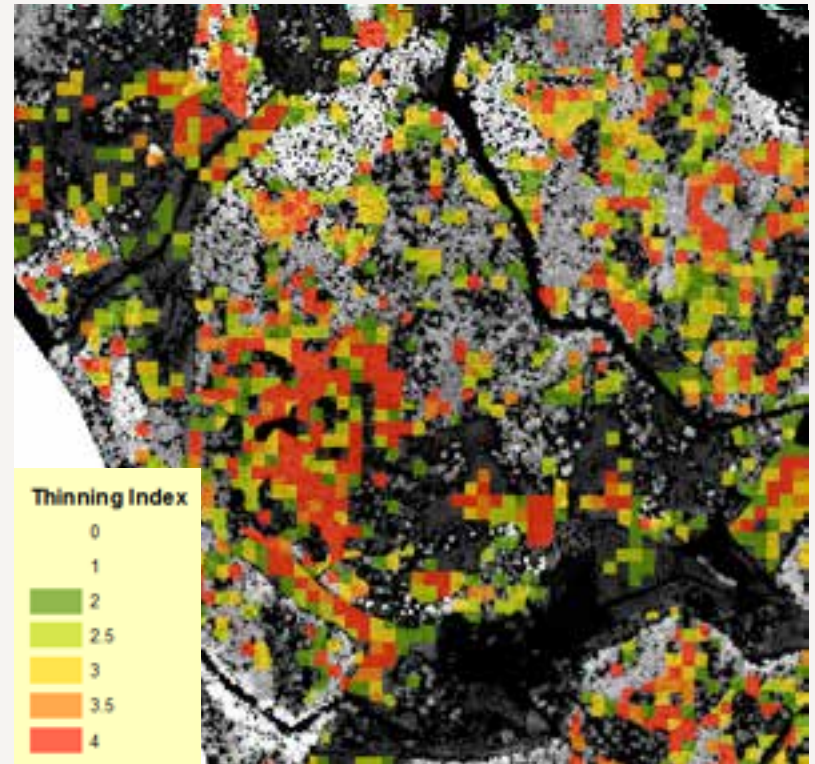
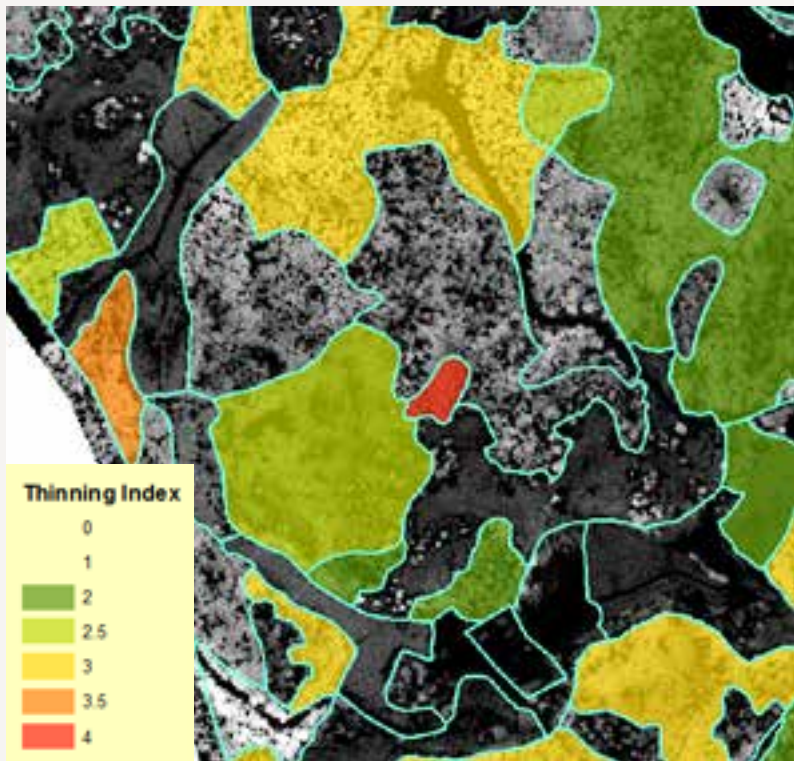
Input

- SI
- Height
- Tree species
- Latitude

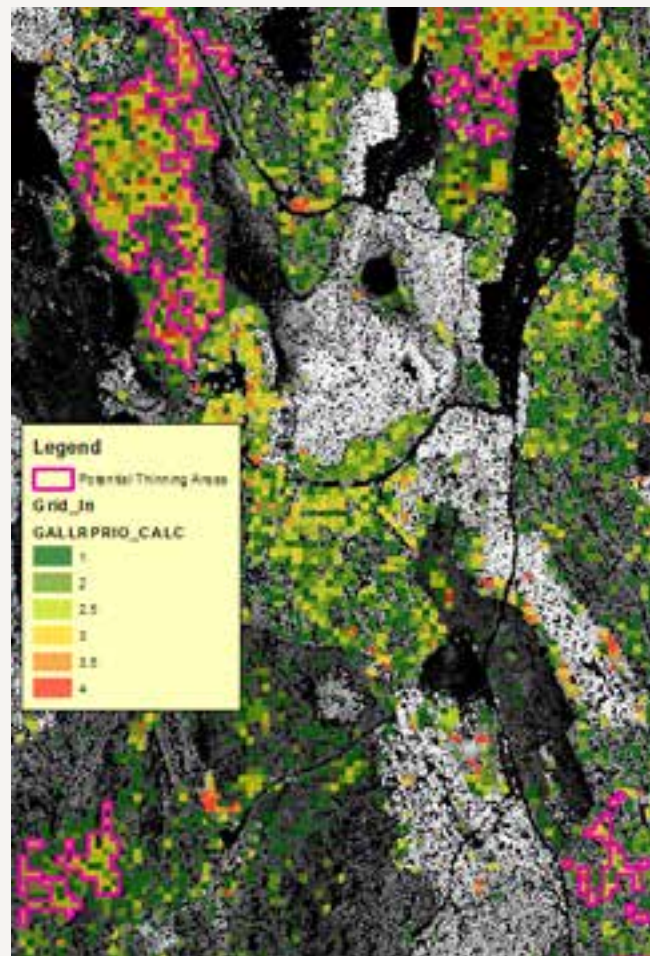
Thinning Index Pine 28



Stand Level vs Grid Level?



Graphic Use



Life-Span of Thinning Index

- › For how many years are the calculations viable?
- › How can we prolong usability for the data?
 - › Projections of the future
 - › Image matching
 - › Grid needs to be updated after Thinning
 - › New LiDAR scanning
 - › Calculate new index

Thank you!

Contact:

Jenni Ljunglöf
Projekt Coordinator and GIS Expert
jelf@cowi.no
0047-466 388 21

Adrian Madejczyk
GIS Expert
adm@cowi.no
0047-