



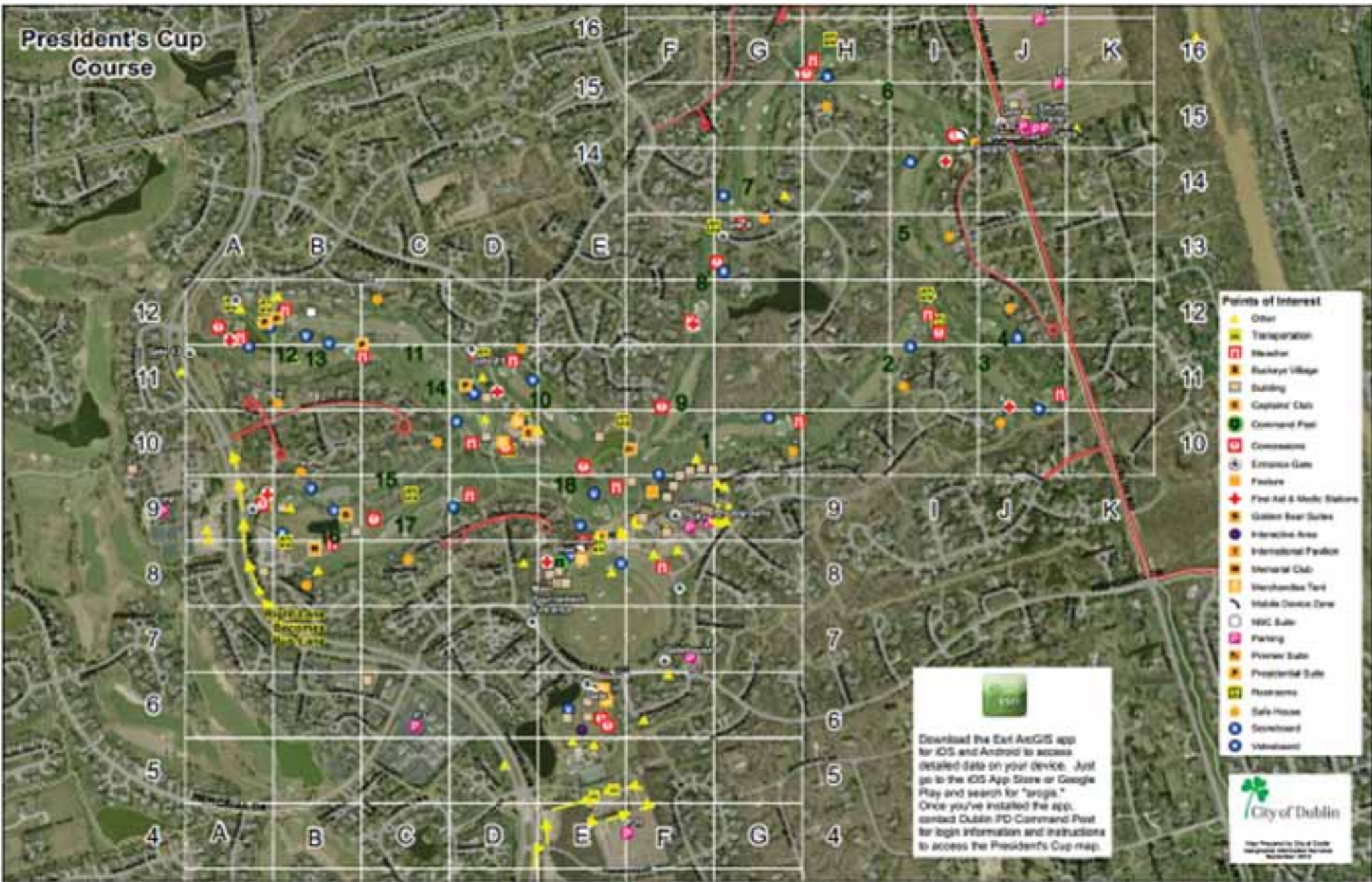
Presidential GIS - ArcGIS Online's Role in the 2013 President's Cup



Brandon Brown
GIS Administrator
City of Dublin, Ohio, USA



President's Cup Course



- Points of Interest**
- Other
 - Transportation
 - Weather
 - Residential Village
 - Building
 - Captain's Club
 - Command Post
 - Commissions
 - Entrance Gate
 - Feature
 - First Aid & Medical Stations
 - Golden Bear Statue
 - Interactive Area
 - International Pavilion
 - Memorial Club
 - Merchandise Tent
 - Mobile Device Zone
 - NSIC Suite
 - Parking
 - Power Suite
 - Presidential Suite
 - Restrooms
 - Safe House
 - Scenic View
 - Volunteer

Download the Eut ArcGIS app for iOS and Android to access detailed data on your device. Just go to the iOS App Store or Google Play and search for "arqis." Once you've installed the app, contact Dublin PD Command Post for login information and instructions to access the President's Cup map.







Connect with us:



About » Government » Services Parks & Recreation » Safety » Events »



Construction Updates

Legend Find address or place

Roadway Improvements: Sells Mill Dr

Status	Construction Phase
Construction Date	July 8, 2013
Construction Limits	Muirfield Dr to Earlington Pkwy
Work Description	Roadway and bikeway resurfacing
Paving Work	Resurfacing and Curb and Gutter Repair
Construction Notes	Scheduled Roadway Work 7/8 thru 8/21
Office Contact	Darren Lee, P.E., 410-4625, dlee@dublin.oh.us

[Zoom In](#)

POWERED BY esri



[View Larger Map](#) | [Construction Mobile](#) | [Get The iOS app](#) | [Request a Street Maintenance Repair or Service Follow up](#)

2013 Construction Projects Edit

The screenshot shows an ArcGIS web application interface. The main map displays a residential area with several construction projects marked by colored pins. A pop-up window titled "Construction Type" is open, showing the following details:

Plan Year	2013
Status	Construction Phase
Office Contact	Damen Lee, P.E. 410-4625_d
Fullname	Sells Mill Dr
Work Description	Roadway and bikeway resurfacing
Paving Work	Resurfacing and Curb and Gut
Construction Date	7/8/2013
Construction Limits	Murfield Dr to Eastington Pkwy
Construction Notes	Scheduled Roadway Work 7/8 th
Field Contact	Jeremy Cooper, 410-4634_jco
Detour Link	
CP Project ID	AT1301
CP Project Description	
Project Type	Roadway Improvements
Map Number	5

Buttons for "Delete" and "Zoom to" are visible at the bottom of the pop-up window. The map interface includes a search bar at the top right, a legend on the left, and a scale bar at the bottom left. The Esri logo is in the bottom right corner.

Cancel

Attributes

Finish

**Construction Type: 2013
Storm Structure
Maintenance Program**

2013

2013

Status

Construction Phase

Office Contact

Todd Garwick, P.E., 410-4665,
lgarwick@dublin.oh.us

FullName

2013 Storm Structure
Maintenance Program

Work Description

Curb Inlet Repair

Paving Work

Curb and Gutter Repair

Construction Date

August 1, 2013

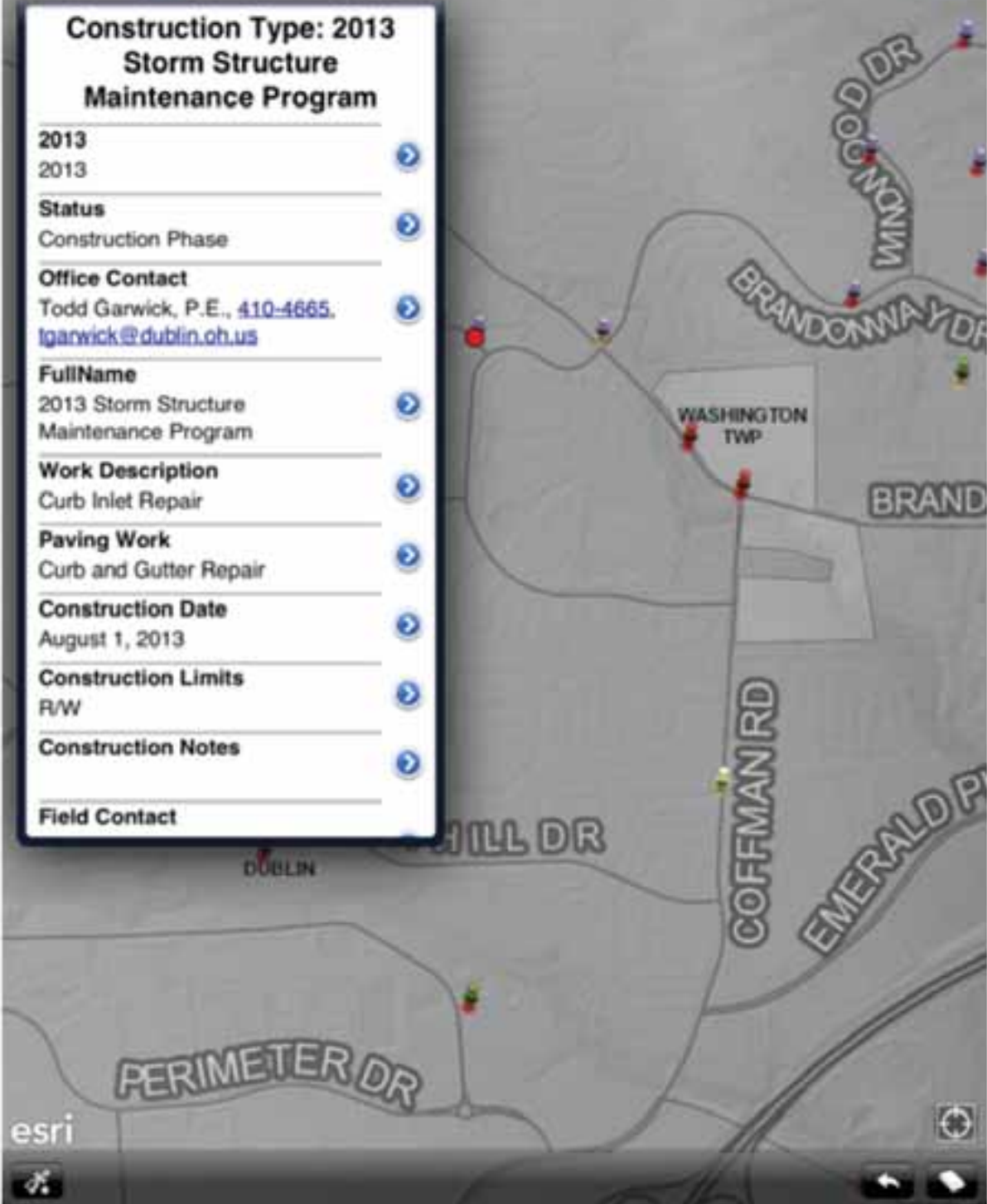
Construction Limits

R/W

Construction Notes

Field Contact

esri





File Edit View Bookmarks Insert Selection Geoprocessing Customize Windows Help

14:00 World Geocode Service <Type an address...>

Table Of Contents

- Layers
 - Addresses
 - Presidents Cup Points of Interest
 - <all other values>
 - Type of Point
 - Transportation
 - Bleacher
 - Buckeye Village
 - Building
 - Building Schematic
 - Captains' Club
 - City Cardmembers
 - Command Post
 - Concessions
 - Entrance Gate
 - Feature
 - First Aid/Medic Stations
 - Golden Bear Suites
 - Interactive Area
 - International Pavilion
 - Memorial Club
 - Merchandise Tent
 - Mobile Device Zone
 - NBC Suite
 - Oblique Imagery
 - Parking
 - Premier Suite
 - Presidential Suite
 - Restrooms
 - Safe House
 - Scoreboard
 - Taylor
 - Videoboard
 - DUBLIN, IRL streets
 - Memorial Grid
 - Parcels
 - Recreation Facilities

Identify

Identify from: <Visible layers>

- Presidents Cup Points of Interest
 - Wide Shot NE
 - Memorial Grid
 - Recreation Facilities
 - Marblehead Village Golf Club

Location: 1,786,767.890 780,497.538 Feet

Field	Value
OBJECTID	2190
Id	<null>
POI_TYPE	Oblique Imagery
GATE_NAME	<null>
POI_NAME	Wide Shot NE
ADDRESS	<null>
GRID_ID	<null>
Shape	Point
Image_Link	http://arcmaps.dublin.oh.us/7.JPG
Hyperlink	<null>

Identified 3 features

Table Of Contents

Results Air Toolbar Table Of Contents

Drawing



Cancel Done

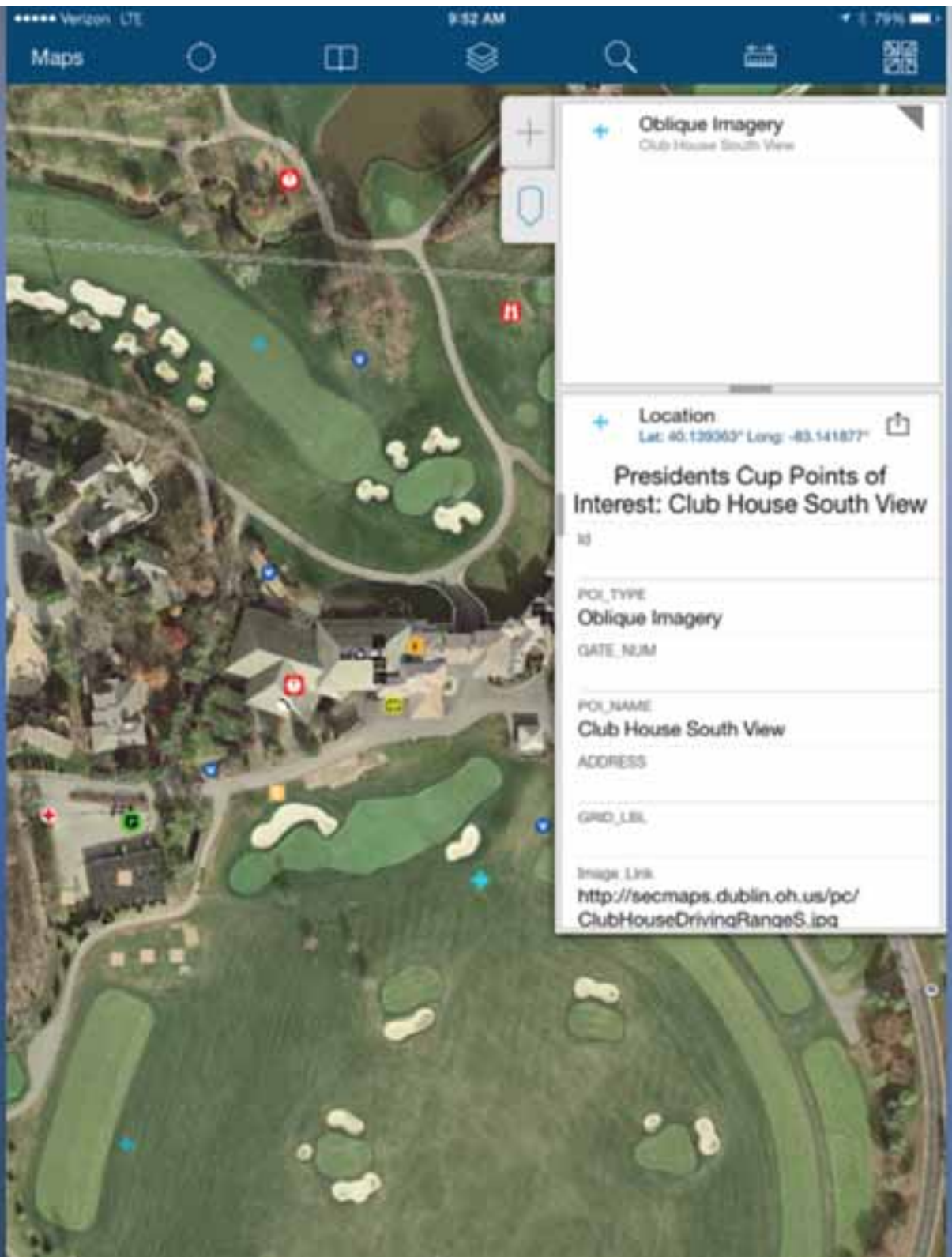
ADDRESS

[Empty text input field for address]

0/50

Mobile Editing Scenario





Presidents Cup Data Viewer

[Editor](#) [Details](#) [Print](#) [Layers](#) [Download](#) [Measure](#) [Time](#) [Share](#)

[Find address or place](#)

Edit Presidents Cup Points of Interest

- Transportation
- Bleacher
- Backstage Village
- Building
- Building Schematic
- Captains' Club
- Clo Cardmembers
- Command Post
- Concessions
- Entrance Gate
- Feature
- First Aid & Medic Stations
- First Aid & Medic Stations
- Golden Bear Suites
- Interactive Area
- International Pavilion
- Memorial Club
- Merchandise Tent
- Mobile Device Zone
- NBC Suite
- Oblique Imagery
- Parking
- Premier Suite
- Presidential Suite
- Restrooms
- Safe House
- Scoreboard
- Trailer
- Videoboard
- ...all other values

Events

Presidents Cup Points of Interest





File Edit View Bookmarks Insert Selection Geoprocessing Customize Windows Help

14:00 World Geocode Service <Type an address...>

Table of Contents

- Layers
 - Addresses
 - Presidents Cup Points of Interest
 - <all other values>
 - Type of Point
 - Transportation
 - Bleacher
 - Buckeye Village
 - Building
 - Building Schematic
 - Captains' Club
 - City Cardmembers
 - Command Post
 - Concessions
 - Entrance Gate
 - Feature
 - First Aid/Medic Stations
 - Golden Bear Suites
 - Interactive Area
 - International Pavilion
 - Memorial Club
 - Merchandise Tent
 - Mobile Device Zone
 - NBC Suite
 - Oblique Imagery
 - Parking
 - Premier Suite
 - Presidential Suite
 - Restrooms
 - Safe House
 - Scoreboard
 - Taylor
 - Videoboard
 - DUBLIN, IRL streets
 - Memorial Grid
 - Parcels
 - Recreation Facilities

Identify

Identify from: <Visible layers>

- Presidents Cup Points of Interest
 - Wide Shot NE
- Memorial Grid
 - E
- Recreation Facilities
 - Marlfield Village Golf Club

Location: 1,766,767.890 760,497.538 Feet

Field	Value
OBJECTID	2190
Id	<null>
POI_TYPE	Oblique Imagery
GATE_NAME	<null>
POI_NAME	Wide Shot NE
ADDRESS	<null>
GRID_ID	<null>
Shape	Point
Image_Link	http://arcmaps.dublin.oh.us/7.JPG
Hyperlink	<null>

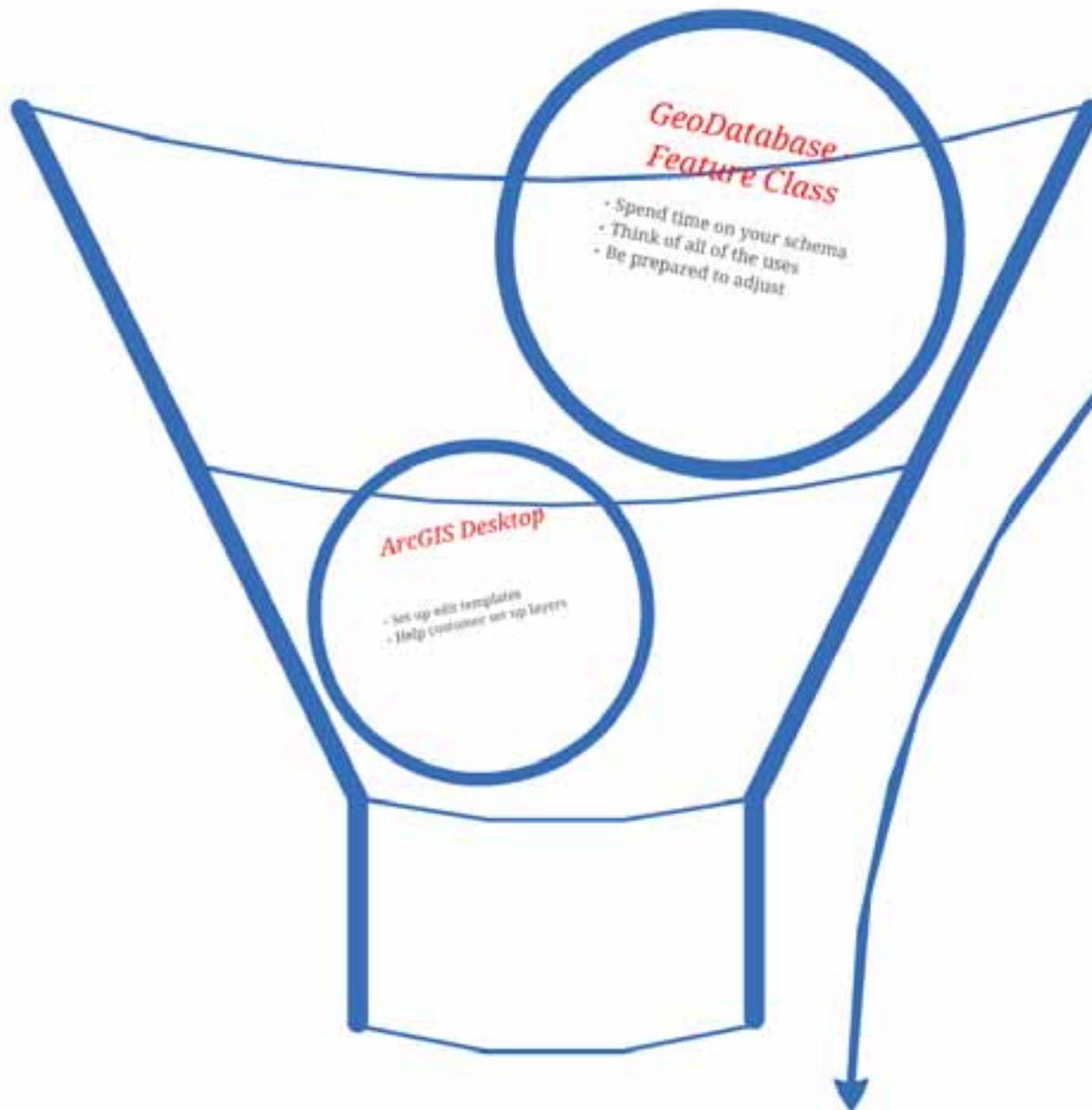
Identified 3 features

Attributes

Table of Contents

Drawing

ArcGIS Scenario



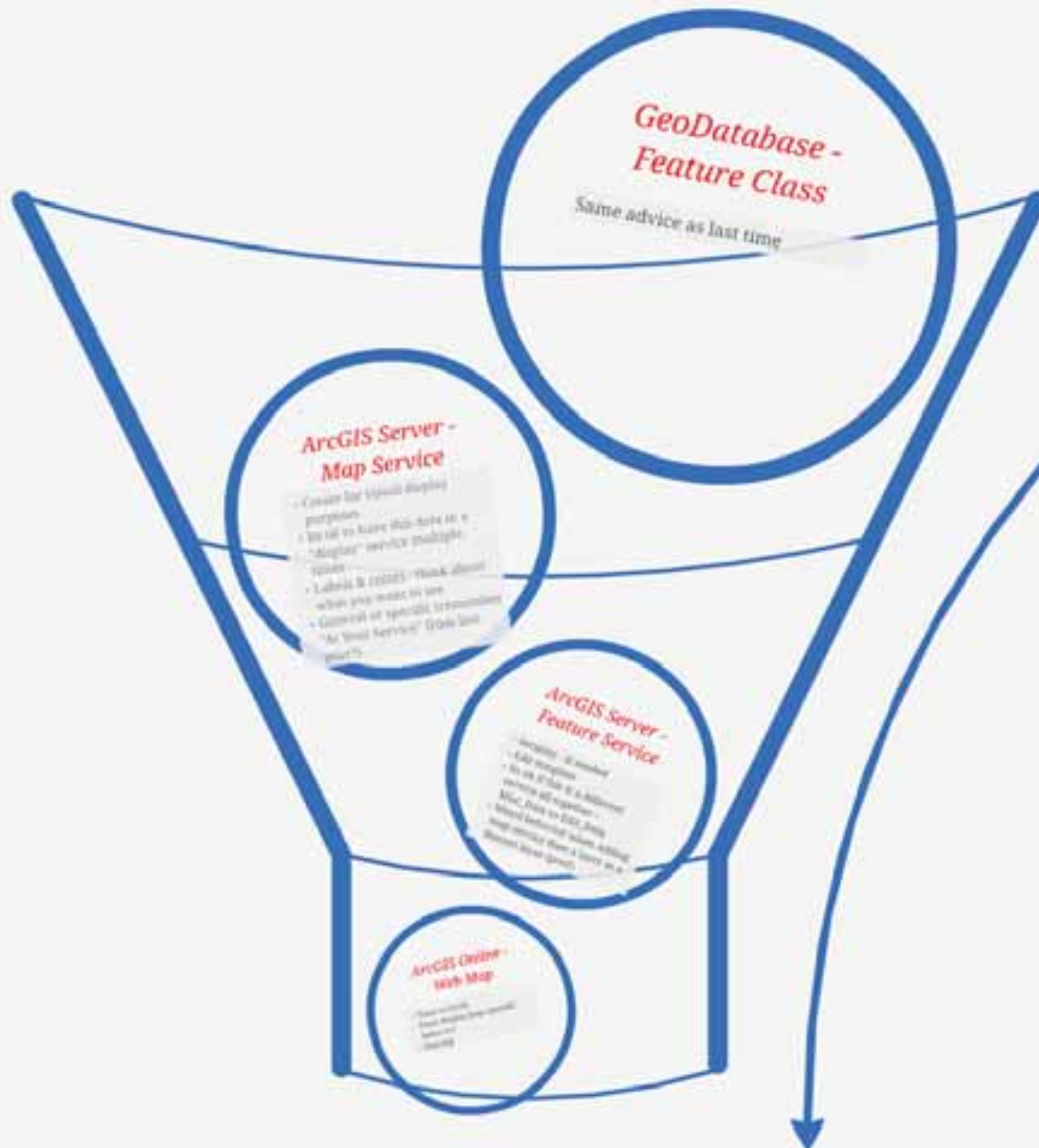
GeoDatabase - Feature Class

- Spend time on your schema
- Think of all of the uses
- Be prepared to adjust

ArcGIS Desktop

- Set up edit templates
- Help customer set up layers

Mobile Editing Scenario



ArcGIS Server - Map Service

- Create for visual display purposes
- Its ok to have this data in a "display" service multiple times
- Labels & colors - think about what you want to see
- General or specific (remember "At Your Service" from last year?)

remember
from last

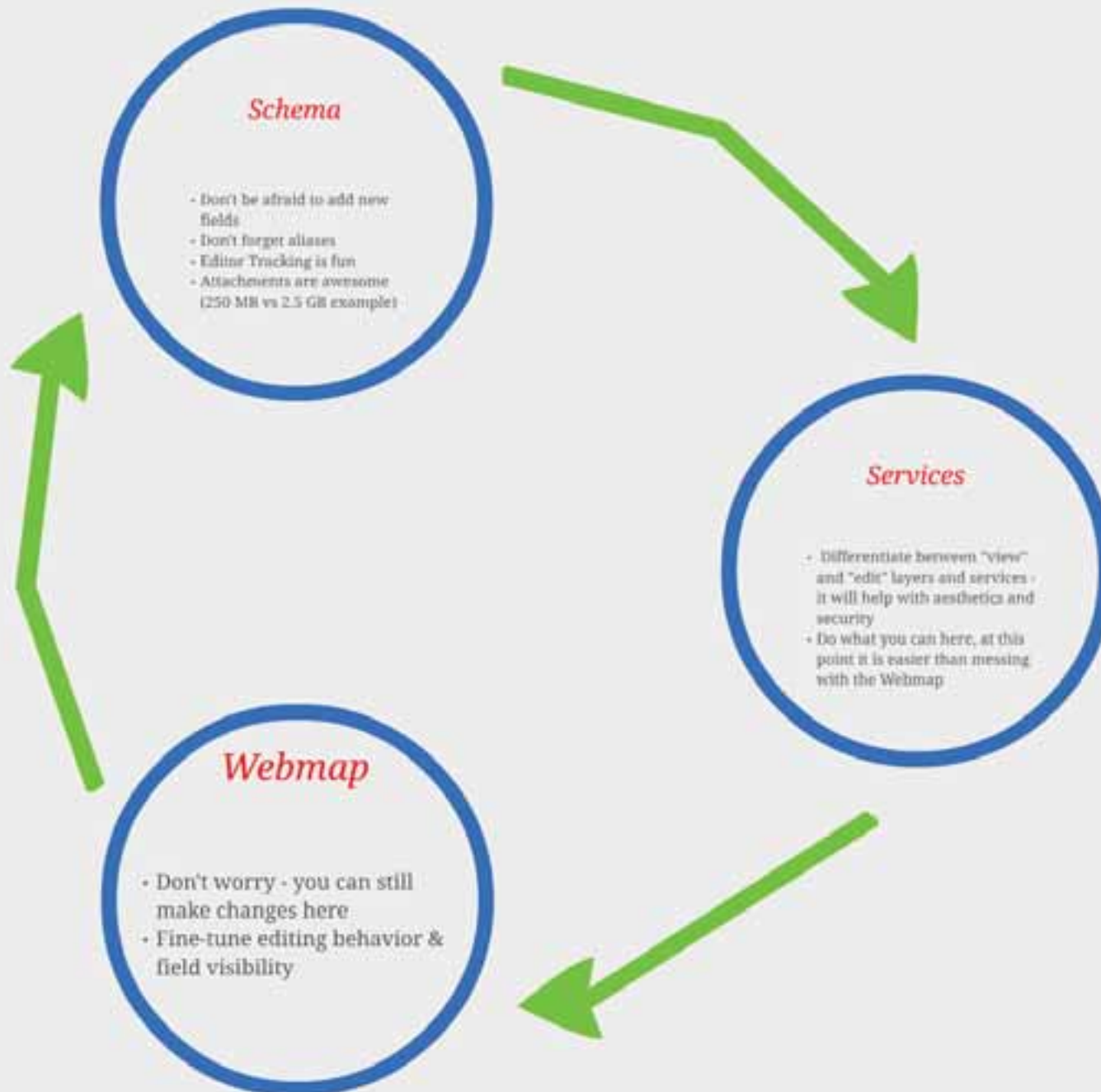
ArcGIS Server - Feature Service

- Security - if needed
- Edit template
- Its ok if this is a different service all together --
Misc_Data vs Edit_Data
- Weird behavior when adding map service then a layer as a feature layer (poof)

ArcGIS Online - Web Map

- Time to mosh
- Final display/pop-ups/edit behavior
- Sharing

Overall Lessons



Schema

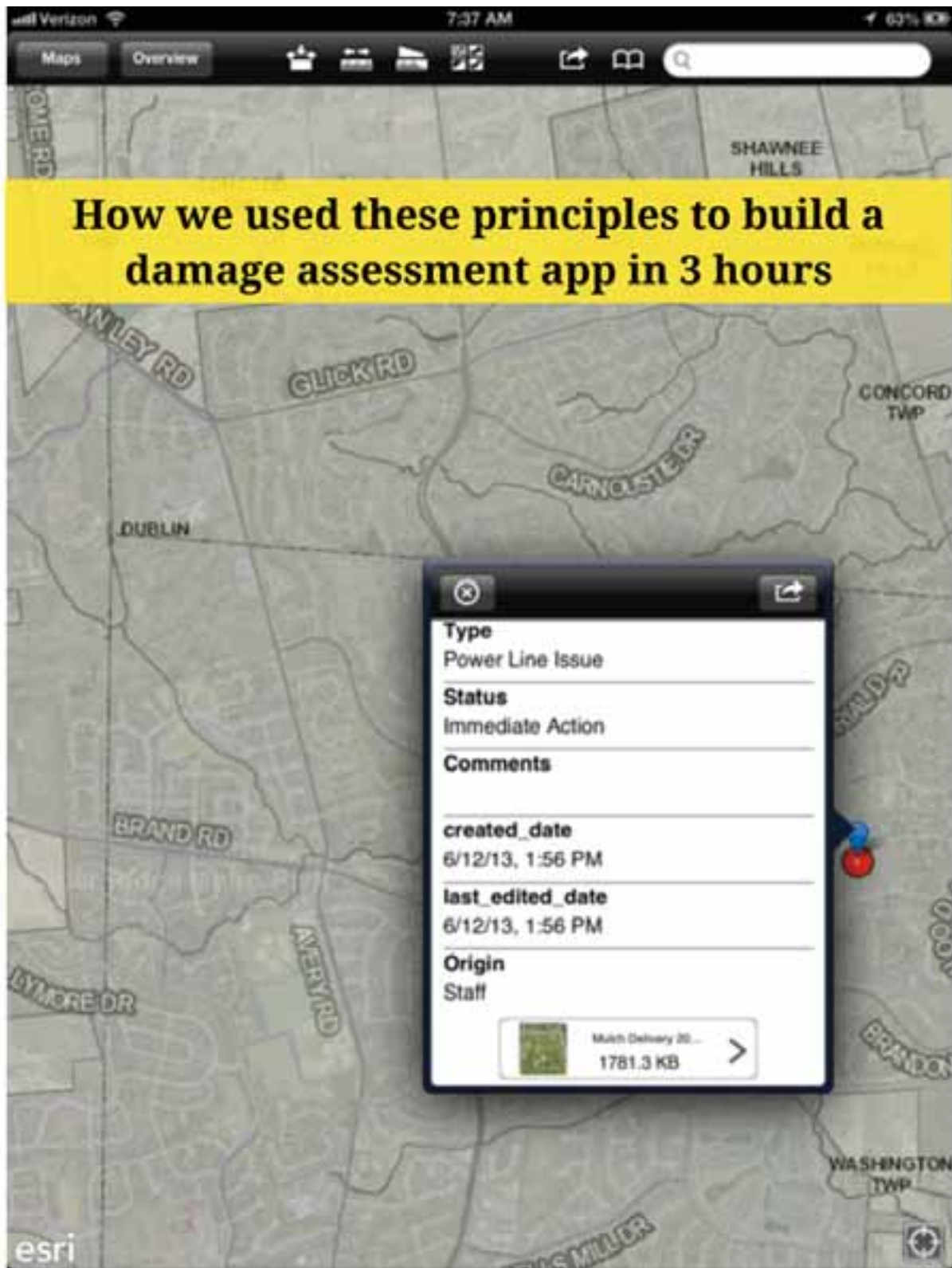
- Don't be afraid to add new fields
- Don't forget aliases
- Editor Tracking is fun
- Attachments are awesome
(250 MB vs 2.5 GB example)

Services

- Differentiate between "view" and "edit" layers and services - it will help with aesthetics and security
- Do what you can here, at this point it is easier than messing with the Webmap

Webmap

- Don't worry - you can still make changes here
- Fine-tune editing behavior & field visibility



How we used these principles to build a damage assessment app in 3 hours

Presidential GIS - ArcGIS Online's Role in the 2013 President's Cup



Brandon Brown
GIS Administrator
City of Dublin, Ohio, USA

