



Web Solutions for Transmission Routing and Construction

Remi Myers

Alabama Power Company



TRANSMISSION



Service Territory = 44,500 sq. miles

Total Capacity = 12,222 megawatts

Total Customers = 1.4 million

Miles of line

Transmission = 10,503 miles

Distribution = 72,479 miles



**ALABAMA
POWER**
A SOUTHERN COMPANY

**SOUTHERN
COMPANY**



Why use Web Solutions

- Shallow learning curve



Why use Web Solutions

- Shallow learning curve
- Easier to implement and support
 - More Users
 - IOS & Android Capable
 - Central control for security and support



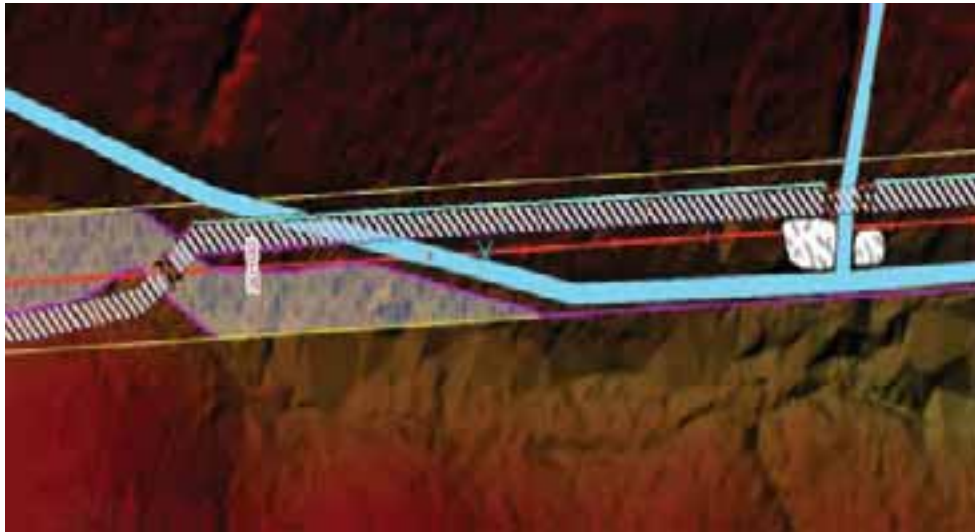
Why use Web Solutions

- Shallow learning curve
- Easier to implement and Support
- Reduced cost of maintaining application
 - Fewer Field Calls
 - Standard Data Models
 - Rapid response to changes



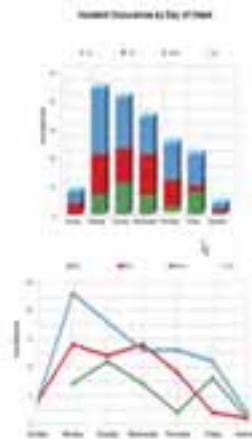
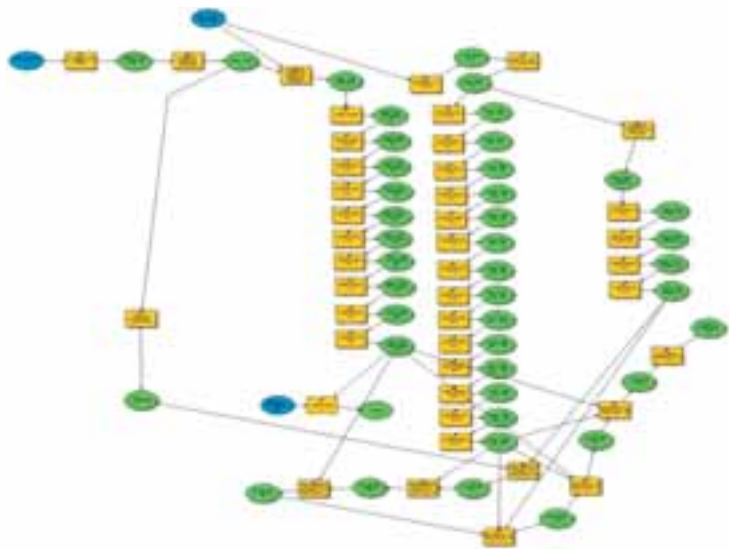
Enriching Information for Routing

- Utilizing available basedata



Enriching Information for Routing

- Utilizing available basedata
- Providing Context Rich analytics



Enriching Information for Routing

- Utilizing available basedata
- Providing Context Rich analytics
- Distributing Information to Project Team



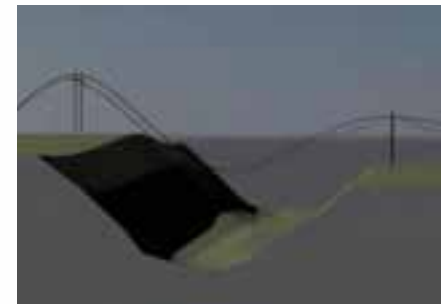
Enriching Information for Routing

- Utilizing available basedata
- Providing Context Rich analytics
- Distributing Information to Project Team
- Maintaining Secure Environment

Analysis Results: Egoz_Estate

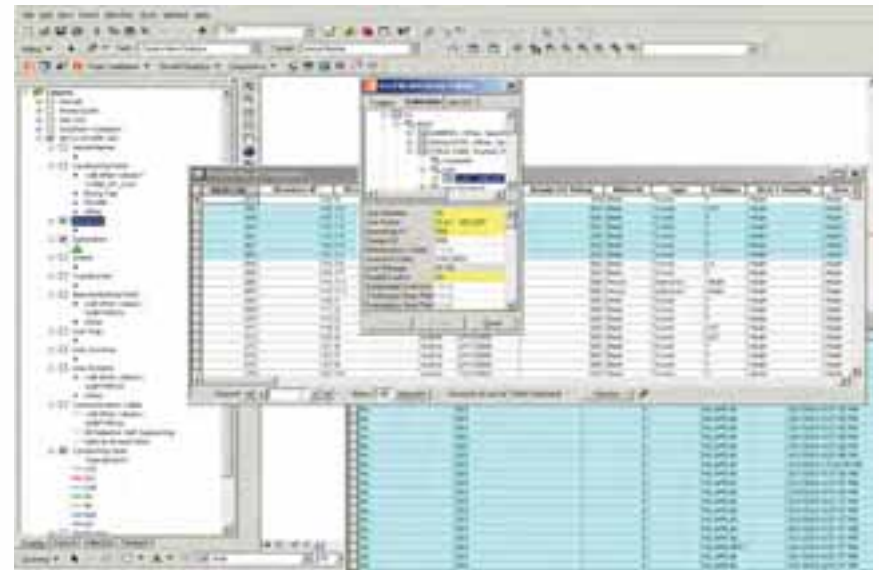
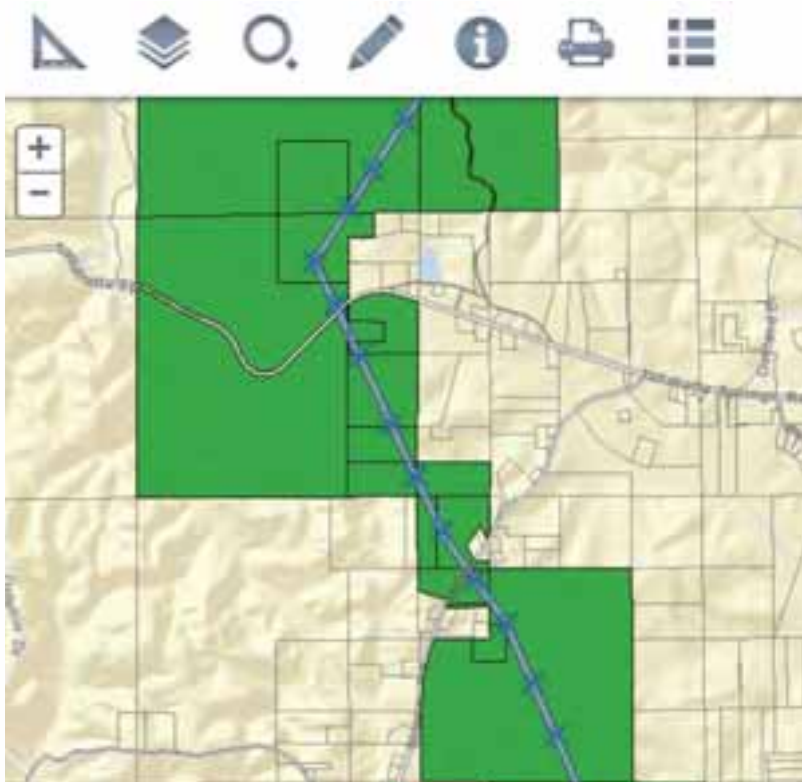
Est. to Date: 7/1/2016
 Project: Egoz_Estate
 PE: JTS
 PE Issue: 2/1

Category	Value
Route Length	22.276 miles
Angles	
Count of 90 greater than or equal to 75 degrees	0
Count of 90 less than 75 degrees	27
Overlap Analysis	
Percent overlap corridor	98.20%
Count of overlaps inside corridor	98.20%
Count of 100% overlaps inside corridor	0.00%
Number of 100% overlaps outside corridor	0.00%
Number of Railroads crossed	2.00%
Number of State Highways crossed	4.00%
Number of Counties crossed	0.00%
Airport Impact	
CTSR 100 Ft Coverage	0.00%
CTSR 200 Ft Coverage	0.00%
CTSR 500 Ft Coverage	0.00%
CTSR 1000 Ft Coverage	0.00%
CTSR 6000 Ft Coverage	2.00%



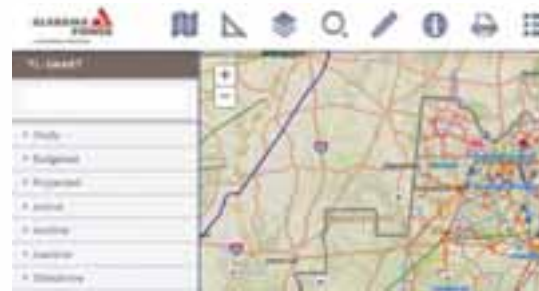
Creating Project Status Trackers

- Providing the right tools for the right users



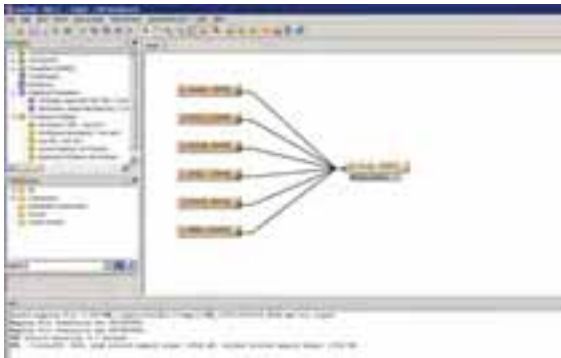
Creating Project Status Trackers

- Providing the right tools for the right users
- Able to Re-utilize methods and tools



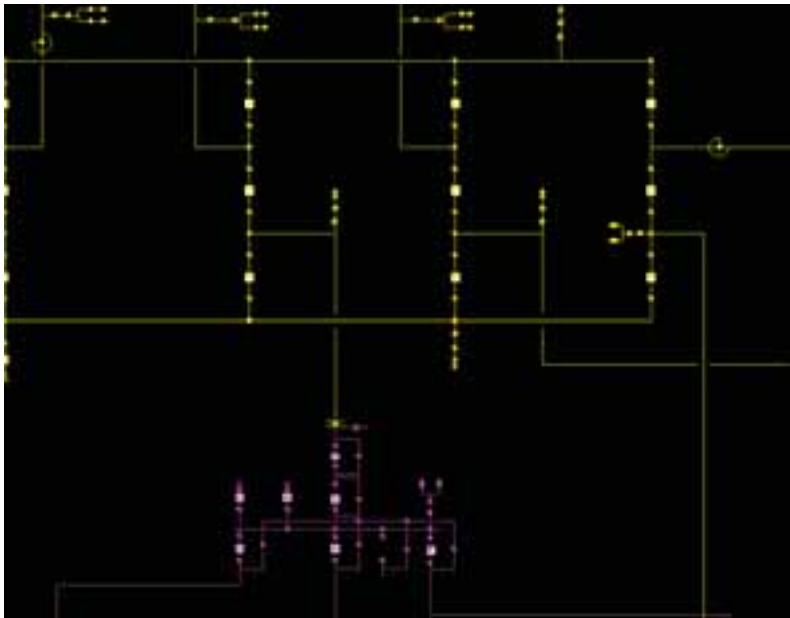
Creating Project Status Trackers

- Providing the right tools for the right users
- Able to Re-utilize methods and tools
- Integrating multi-collectors into one viewer



Development of Connected Models

- Migration of Load flow from schema to geography



Development of Connected Models

- Migration of Load flow from schema to geography
- Interface for real world display of system status



Development of Connected Models

- Migration of Load flow from schema to geography
- Interface for real world display of system status
- Planning, Fault Current and Fault Tracking Functionality

Findings

- Web solutions are improved environments for end users
- Tools and components can be cross utilized for a range of solutions
- Server support is less costly than desktop support in most cases

Questions?