

Business Analysis and Requirements Gathering Within An Enterprise

Christianna Kretschmann
Pinellas County, Florida



Outline

- Pinellas County, Florida Background
- Enterprise GIS Within Pinellas County
- eGIS Goals and Timeline
- eGIS Steering Committee vs. eGIS Working Group
- Project Prioritization
- Requirements Gathering
- Challenges and Successes

Pinellas County Snapshot

- Population just under 1M
- Part of the Tampa Bay region
- Peninsula bordered on three sides by water!
- 24 Municipalities



Most densely populated county based on people per square mile
Pinellas: 3,347 person per square mile/929,048 total population
Miami-Dade: 1,315 person per square mile/2,617,176 total population

(US Census 2013 estimates)

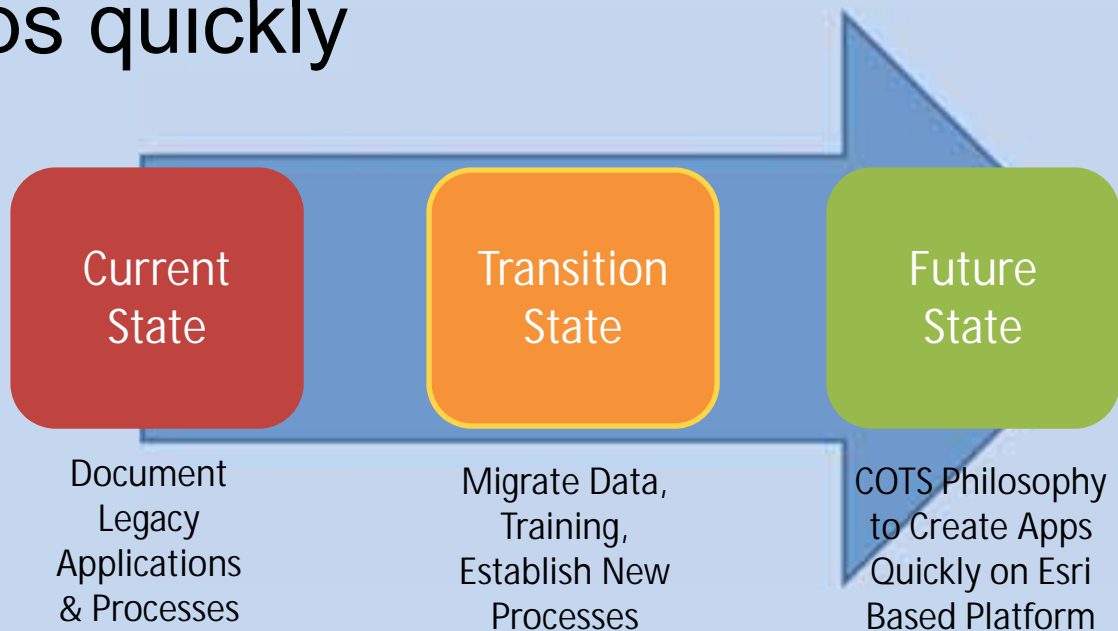


Purpose of an Enterprise GIS for Pinellas County

- Large GIS user community
- Layoffs compromised key GIS positions and expertise
- Urgent replacement of unsupported legacy GIS system
- Make Pinellas County more efficient by eliminating redundancy supporting 2 GIS systems
- Move to Esri GIS platform and stay current

Goals

- Enable Transformation – migrate from legacy system to entirely Esri based platform
- Follow COTS philosophy to create new apps quickly



Timeline of eGIS

- eGIS Steering Committee inaugural meeting July 29, 2010
- April 2011 – 2 GIS developers hired
- July 2011 – eGIS Bureau formed with 5 analysts
- April 2012 – \$1.8M Esri Enterprise License Agreement approved
- October 2012 – eGIS Working Group formed
 - Release process established

eGIS Steering Committee

- Director level management
- Empowered to make decisions

eGIS Working Group

- Every Day Experts and users of GIS from across the County and Eligible Agencies
- Makes recommendations to Steering Committee

eGIS Team

- GIS Analysts and Developers
- Suggests release options for Working Group to choose from
- Estimates effort for each option

Project Prioritization

- eGIS Working Group determines priority of new and existing projects
- Each project is discussed and estimated within the eGIS Team based on availability
- After estimates are completed, a list of possible projects is compiled and presented for approval by the eGIS Steering Committee

Gathering Enterprise Requirements

- January/February 2013 – stakeholder meetings to document legacy applications
 - Internal eGIS requirements gathering team comprised of Project Sponsor, Project Manager and Business Analyst
 - eGIS Team determined which legacy applications continue to be utilized within Pinellas County
 - eGIS Team solicited input from impacted departments
 - Documented business processes, workflows, other related data, tools and procedures – “gotta haves”

Evolution of an Enterprise Project

- August 2013 – contracted with GIS Inc. for creation of Esri COTS application work
- Ongoing stakeholder meetings approving SDLC steps – Design, Build, Test
- December 2013 – successful completion of contract with GIS Inc. and rollout of COTS applications

Challenges

- Stakeholder engagement and response
- Internal department disorganization
 - Key staff departures
 - Internal reorganization

Successes

- Increased stakeholder confidence and support
- Executive Leadership support
- Close collaboration with Change Management to ensure communication, training and support
- COTS approach enabled quick turnaround

Thank you!

Christianna Kretschmann

GIS Business Analyst, Pinellas County, FL

