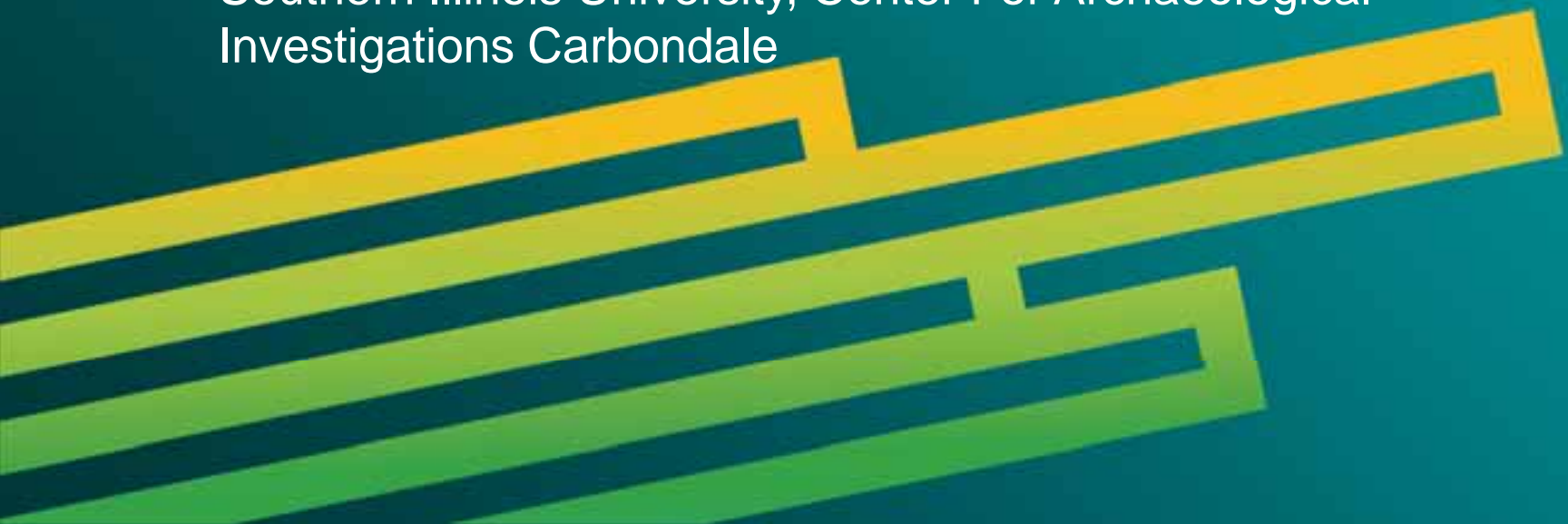


# Transforming 19<sup>th</sup> Century Archives into 21<sup>st</sup> Century Analytical Maps

Kayeleigh Sharp & Mark Wagner

Southern Illinois University, Center For Archaeological  
Investigations Carbondale





# Trail of Tears

## 1838-1839

Cherokee removal & southern Illinois

# Who were the Cherokee?

- Regional Extent
- Lifeways and Culture
- Writing and Publication
- Treaties and Allies



Cherokee Territorial Limits (Royce 1884)



Se-Quo-Yah (Bowen 1838)

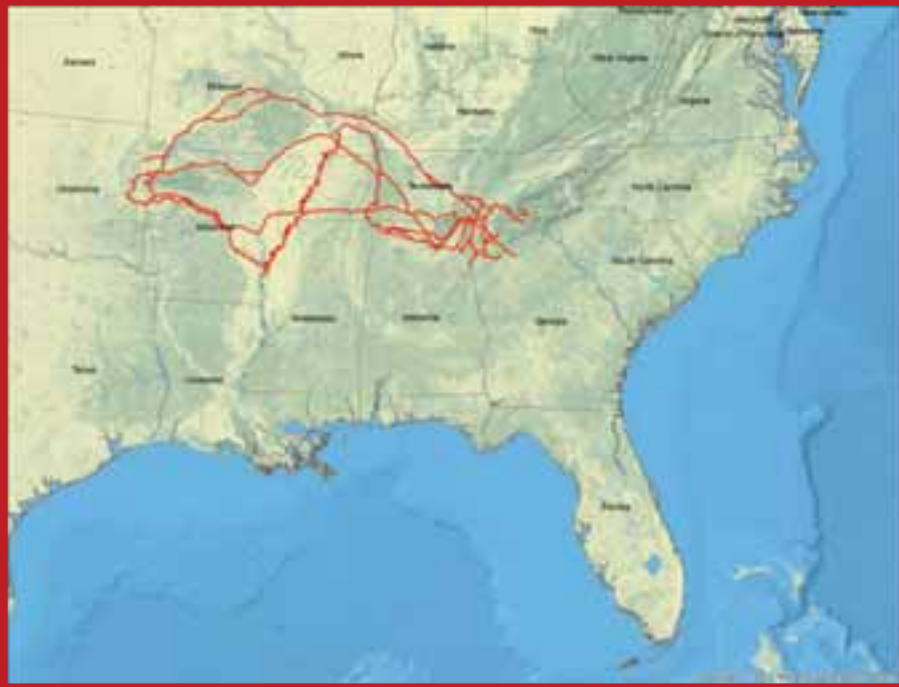
Cherokee Phoenix  
(Harris 1828)

TOT-SI, Kayeleigh Sharp & Mark Wagner ESRI UC 2014

# Andrew Jackson and Indian Removal



Andrew Jackson (Ritchie 1860)



Routes adapted from Trail of Tears National Historic Trail (NPS 2009)

**“The 1828 election of President Andrew Jackson, who made his name as an Indian fighter, marked a change in federal policies. As part of his plans for the United States, he was determined to remove the remaining tribes from the east and relocate them in the west.” (NPS 2014)**

# *Nunaihi-Duna-Dlo-lilu-i:* The Trail Where They Cried



Photo courtesy of Kayeleigh Sharp

“During the harsh winter of 1838-1839 over 13,000 Cherokee Indians passed through southern Illinois on their *Trail of Tears*. Many perished from cold and hunger on this long, painful journey from their home in the Smoky Mountains to new government-designated lands in eastern Oklahoma. It took almost three months during the winter to cross the 60 cold and rainy miles between the Ohio and Mississippi Rivers in southern Illinois.” (US Forest Service)

# Archival Research into Cherokee Trail of Tears-Related Sites in Southern Illinois



**“Trail Finders”** Mr. and Mrs. John G. Mulcaster and L. O. Trigg (Saint Louis Post Dispatch 1935)

## Objectives:

- (1) Look at various cultural resources potentially associated with the Cherokee Trail of Tears route through southern Illinois including structures, camp grounds, cemeteries and other facilities recorded in archives;
- (2) Provide locational information on sites and map them;
- (3) Summarize historical and/or archaeological information;
- (4) Elucidate some key aspects of the Trail of Tears experience in southern Illinois



# TOTSI GIS

Trail of Tears Southern Illinois  
Archival Research and Geodatabase

# Common Needs for Building a Geodatabase



Like other GIS projects, the TOT-SI archival research project demanded a solution for storing various types of spatial data and non-spatial data in a centralized location and the ability to apply rules, define geospatial models and maintain data integrity.



# Previous Work

Hacker et al. 2010

Illinois Chapter of the Trail of Tears  
*Trail of Tears Across Pope County, Illinois*



Map by Kayeleigh Sharp, courtesy of Sharp & Wagner (2014)

Henson 2010

Wagner and McCorvie 2003

**Recent data recorded in a variety of archaeological, geophysical and historical investigations was brought together in a centralized repository for the first time.**

*TOT-SI, Kayeleigh Sharp & Mark Wagner ESRI UC 2014*

# Other State and National Spatial Data Resources



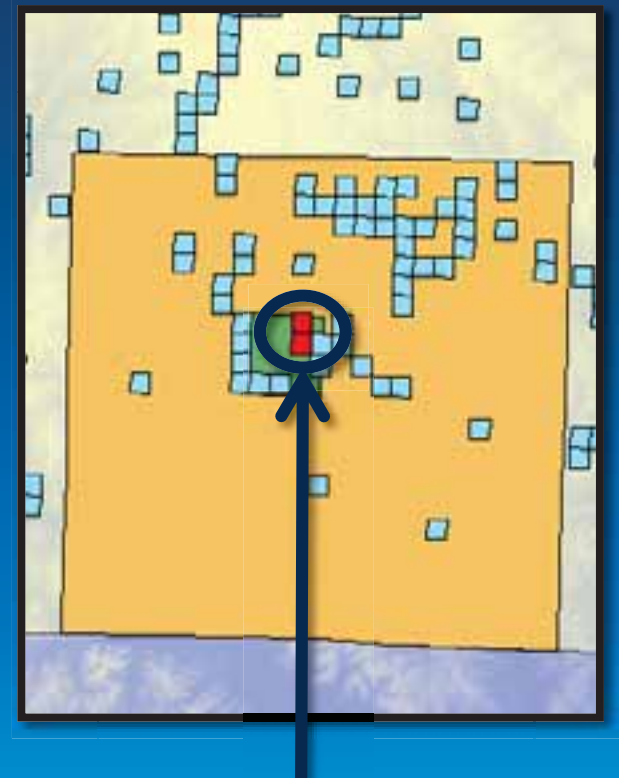
Illinois Public Domain Land Tract Sales (ISA 2012b)

+



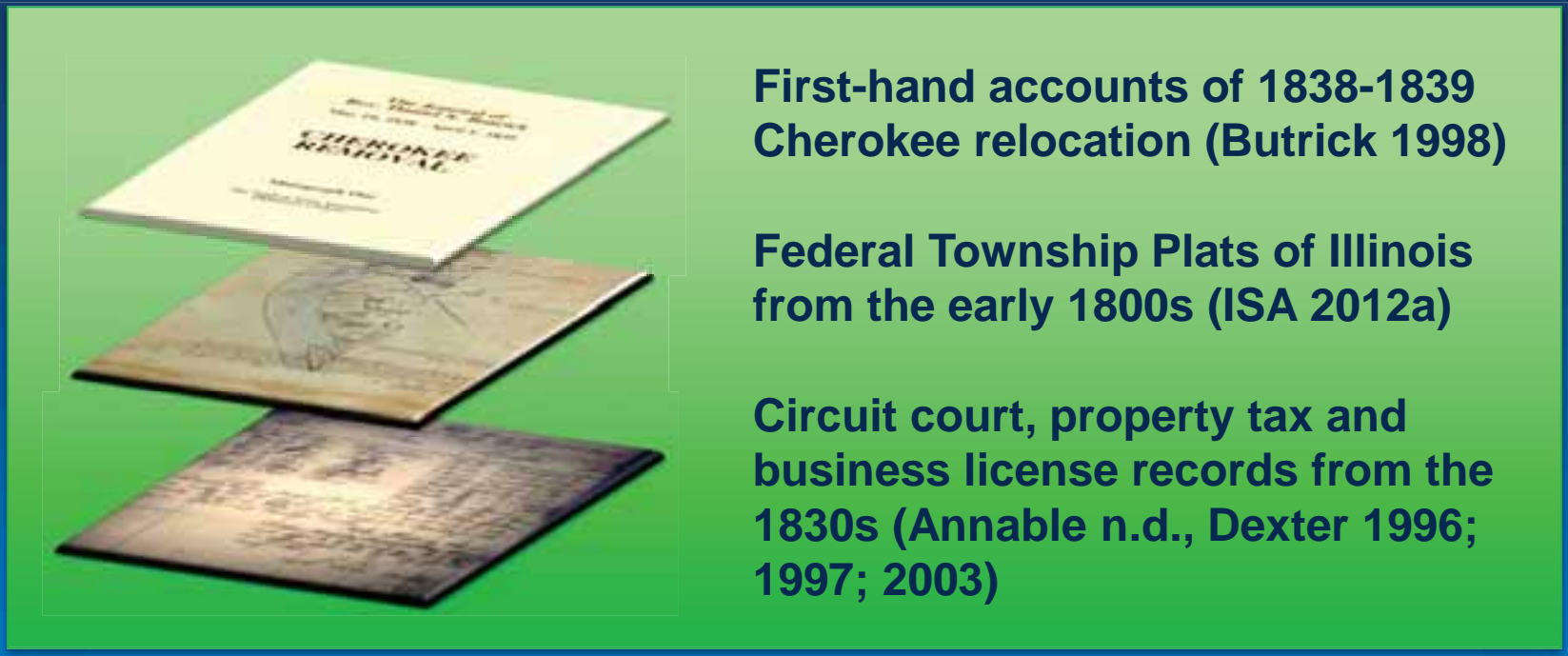
Public Land Survey System (PLSS)

=



Name of Purchaser	Legal Description	Section	Township	Range	Mendian	Date Purchased	County
<a href="#">DAVIE WINSTEAD</a>	W2NW	20	12S	01W	3	07/18/1831	UNION
<a href="#">DAVIE WINSTEAD</a>	W2SE	26	12S	03W	3	10/15/1838	UNION
<a href="#">DAVIE WINSTEAD</a>	SENE	16	13S	01W	3	06/06/1836	UNION

## Primary Resource: Archival Data from the 1800s



First-hand accounts of 1838-1839 Cherokee relocation (Buttrick 1998)

Federal Township Plats of Illinois from the early 1800s (ISA 2012a)

Circuit court, property tax and business license records from the 1830s (Annable n.d., Dexter 1996; 1997; 2003)

**The TOTSI geodatabase combined new data derived from maps and documents that are nearly two centuries old.**





# Key Contributions and Advantages of Using ArcGIS

# Storing & Mapping Multiple Types of Archival Data

.... between the mound and the present highway bridge (After her father's recollection, Frances (Morgan) Wiggins (Wiggins 1934, SCRC, Morris Library)



Bridge (Hornbuckle 1934),  
Photo courtesy of the Cairo Public Library

“...when the Cherokee came along in droves and made their camp in the woods along the creek near the present Nimmo home ...near it was a large flour mill of 2 stories run by water power



Map by Kayeleigh Sharp, courtesy of Sharp & Wagner (2014)



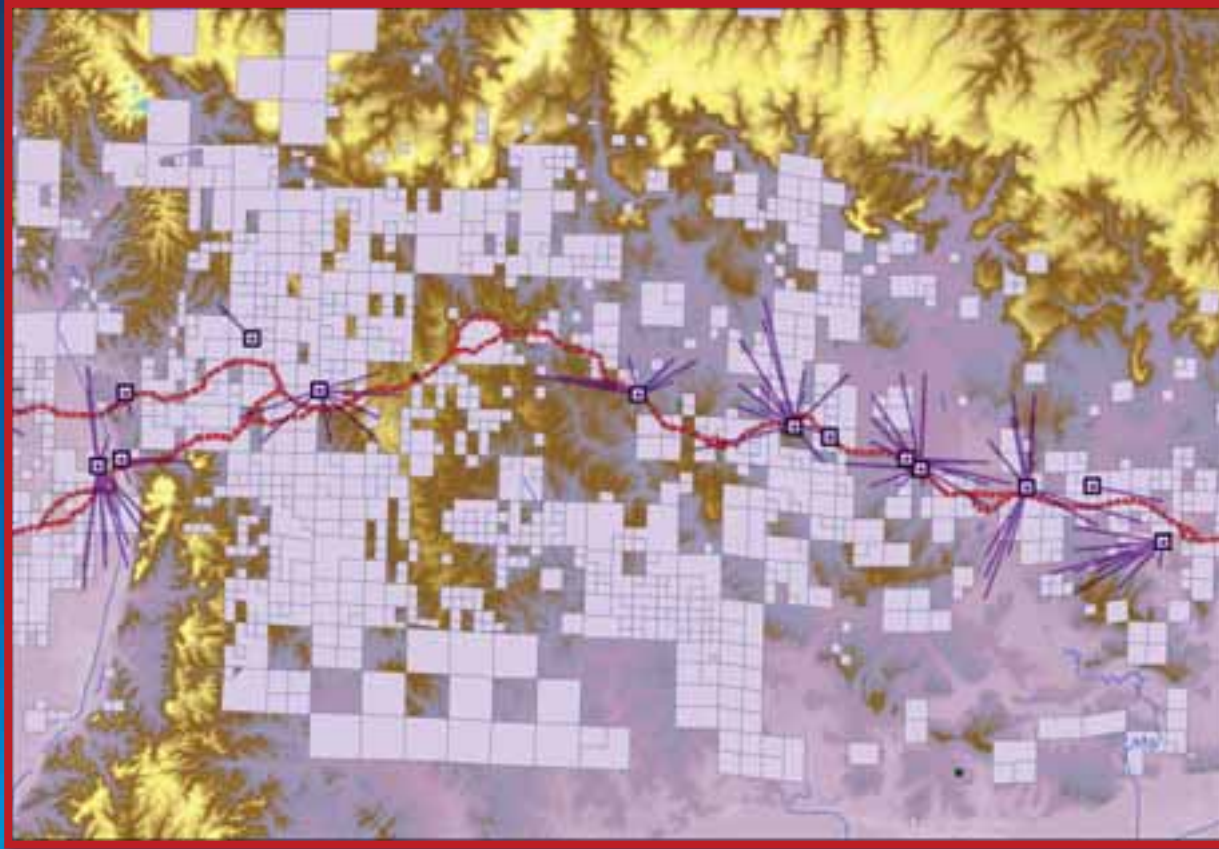
Morgan Farm (Jonesboro Gazette 1934),  
Photo courtesy of the Cairo Public Library

# Reconstructing Routes Using Mosaicked Datasets



Map by Kayeleigh Sharp, courtesy of Sharp & Wagner (2014)

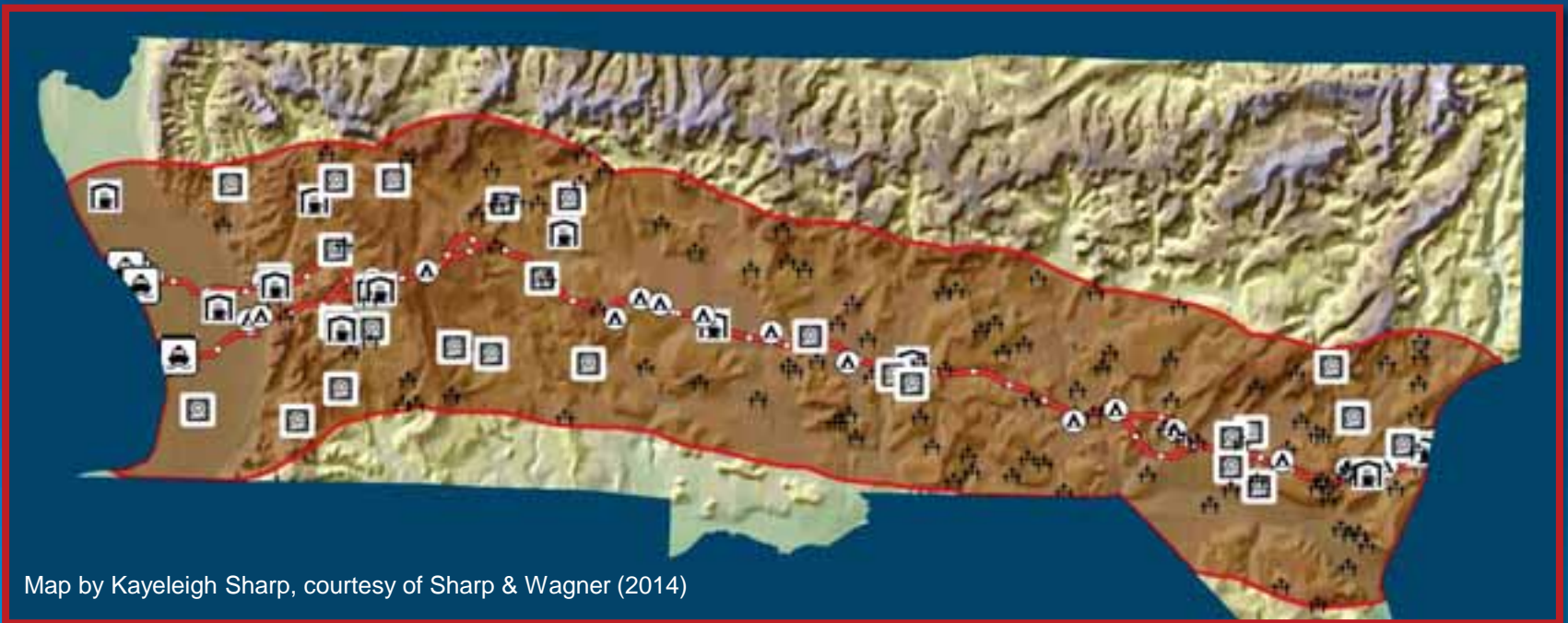
# Resolving Accessibility Questions Using Network Analyst



Map by Kayeleigh Sharp, courtesy of Sharp & Wagner (2014)



# Offering a More Complete Vision of the Cherokee Experience along the Trail of Tears in Southern Illinois by *Transforming 19<sup>th</sup> Century Archives into 21<sup>st</sup> Century Analytical Maps* using Esri's ArcGIS



# References Cited

Annable, E. L. n.d. . *Pope County, Illinois: Forgotten Records*.

Anonymous. n.d. *The Trail of Tears Across Pope County, Illinois (Brochure)*. . ed. I. C. o. t. T. o. T. Association.

Bowen, J. T. (1838) *Se-Quo-Yah / R.T.* ; drawn, printed & coloured at I.T. Bowen's Lithographic Establishment, No. 94 Walnut St. Philad[elphi]a : Published by F.W. Greenough <http://www.loc.gov/pictures/resource/cph.3g02566/> (last accessed 27 Jun. 2014 ).

Butrick, R. D. S. 1998. *The Journal of Rev. Daniel S. Butrick, May 19, 1838 – April 1, 1839: Cherokee Removal, Monograph One*. Park Hill, Oklahoma.

Dexter, D. 1996 *Early Courthouse Records, 1820-1918, Union County, Illinois, Genealogical Information, Vol. 2*. Carterville, Illinois.

---. 1997. *Early Courthouse Records, 1820-1918, Union County, Illinois, Genealogical Information, Vol. 3*. Carterville, Illinois.

---. 2003. *Early Courthouse Records 1839-1918. Union County, Illinois, Genealogical Information, Vol. 4*. Carterville, Illinois.

Saint Louis Post Dispatch, S. L. P. 1935. *Trail Finders*. St. Louis, Missouri.

Gazette, J. 1934. *The Cherokee Trail. November 16, 1934, newspaper clipping contained in the 1934 Daughters of the American Revolution Scrapbook*. Cairo Public Library, Cairo, Illinois.

Hacker, G., E. Annable, J. Musgrave, J. Schwegman & C. Ruffner. 2010. *Trail of Tears in Johnson County: Documenting the Trail of Tears in Johnson County*. Johnson County Genealogical and Historical Society.

Harris, I. H. (1828 ) June 18, 1828 *Cherokee Phoenix*. <http://www.loc.gov/exhibits/treasures/trr125.html> (last accessed 27 Jun 2014).

Henson, H. 2010 *Geophysical Investigation at Camp Ground Cemetery and Church near Anna, Illinois, April 2010*. Department of Geology, Southern Illinois University, Carbondale.

Hornbuckle, M. C. A. 1934. *D.A.R. Group Retraces Old Indian Trail. November 26, 1934, newspaper clipping from the Cairo Citizen contained in the 1934 Daughters of the American Revolution Scrapbook*. Cairo Public Library, Cairo, Illinois.

ISA, Illinois State Archives. 2012a. *Federal Township Plats of Illinois (1804-1891)*. ed. J. White.

---. 2012b. *Illinois Public Domain Land Tract Sales*. ed. J. White.

Lake, D. J. 1881. *An Atlas of Union County, Illinois*. . Philadelphia: D. J. Lake and Company.

NPS, National Park Service (2009) *Trail of Tears National Historic Trail Map*. [http://www.nps.gov/trte/upload/TRTE\\_ContextMap\\_20091104.jpg](http://www.nps.gov/trte/upload/TRTE_ContextMap_20091104.jpg) (last accessed 27 Jun. 2014 ).

--- (2014) *Setting the Stage*. <http://www.nps.gov/nr/twhp/wwwlps/lessons/118trail/118setting.htm> (last accessed 27 Jun. 2014 ).

Ritchie, A. H. (1860) *Andrew Jackson / painted by D.M. Carter ; engraved by A.H. Ritchie*. New York : Ritchie & Co., c1860. <http://www.loc.gov/pictures/item/96521663/> (last accessed 27 Jun. 2014).

Royce, C. C. (1884) *Map of the former territorial limits of the Cherokee "Nation of" Indians; Map showing the territory originally assigned Cherokee "Nation of" Indians*. [S.I.].Scale [ca. 1:1,000,000]. 1 map on 2 sheets: col. ; 72 x 80 cm. and 52 x 76 cm. G3861.E1 1884 .R6 TIL <http://lccn.loc.gov/99446145> (last accessed 27 Jun 2014).

Wagner, M. J. & M. McCorvie. 2003. *Archival and Historical Investigations for the Cherokee Trail of Tears in Union County, Illinois*. Carbondale, Illinois: Center for Archaeological Investigations, Southern Illinois University Carbondale, Technical Report 03-2.

Wiggins, F. 1934. *Typed June 5, 1934 Interview*. Carbondale, IL: Special Collections Research Center, Morris Library, Southern Illinois University Carbondale.

**Acknowledgements:** We wish to acknowledge a number of individuals and institutions without whose assistance this project could not have been completed. Foremost among these are the members of the Illinois Trail of Tears chapter including Sandy Boaz, Joe Crabb, Gary Hacker, Harvey Henson, and Jon Musgrave, the United States Forest Service archaeologists Mary R. McCorvie and Heather Carey for providing information regarding segments of the trail that crossed through Forest Service land, Union County researcher Darrel Dexter, who over the years has transcribed and published numerous primary archival documents from the Union County Courthouse, Louise Ogg and Monica Smith of Cairo, Illinois, for directing us to and letting us photograph the information in the 1930s DAR scrapbooks at the Cairo Public Library, the staff of the Map Library and Special Collections at Morris Library, Southern Illinois University Carbondale (SIUC); Illinois State Archives, Springfield; the Illinois Regional Archives Depository (IRAD) at SIUC; John A. Logan College, Carterville; the Abraham Lincoln Presidential Library, Springfield; and the Chicago Historical Society and the staffs of the Union, Johnson, and Pope County courthouses that provided us with access and introduction to the land records, county commissioner notes, and other documents housed in those courthouses.

# Thank You



Understanding our world.