



Integrating ERSI Products Efficiently Across Multiple Audiences

Presented by
Michael H. Duminiak, Maria Simental & Nathan Matney
July 17, 2014



West Virginia Water Development Authority (WDA)

- Structure
- Mission
- Statutory Support

West Virginia Infrastructure & Jobs Development Council (IJDC)

- Structure
- Mission



Four Audiences:

1. Public
2. Local Entities (private & public)
3. Staff (WDA, IJDC & related agencies)
4. Elected Officials



Considerations:

1. Skill Level/Geospatial Understanding
2. Task Frequency
3. Tool Functionality
4. Cost (Money & Time)



ESRI Products Utilized:

- ArcGIS Online
- ArcGIS Desktop
- ArcGIS Server
- ESRI Maps for Office
- Operations Dashboard
- Various Extensions



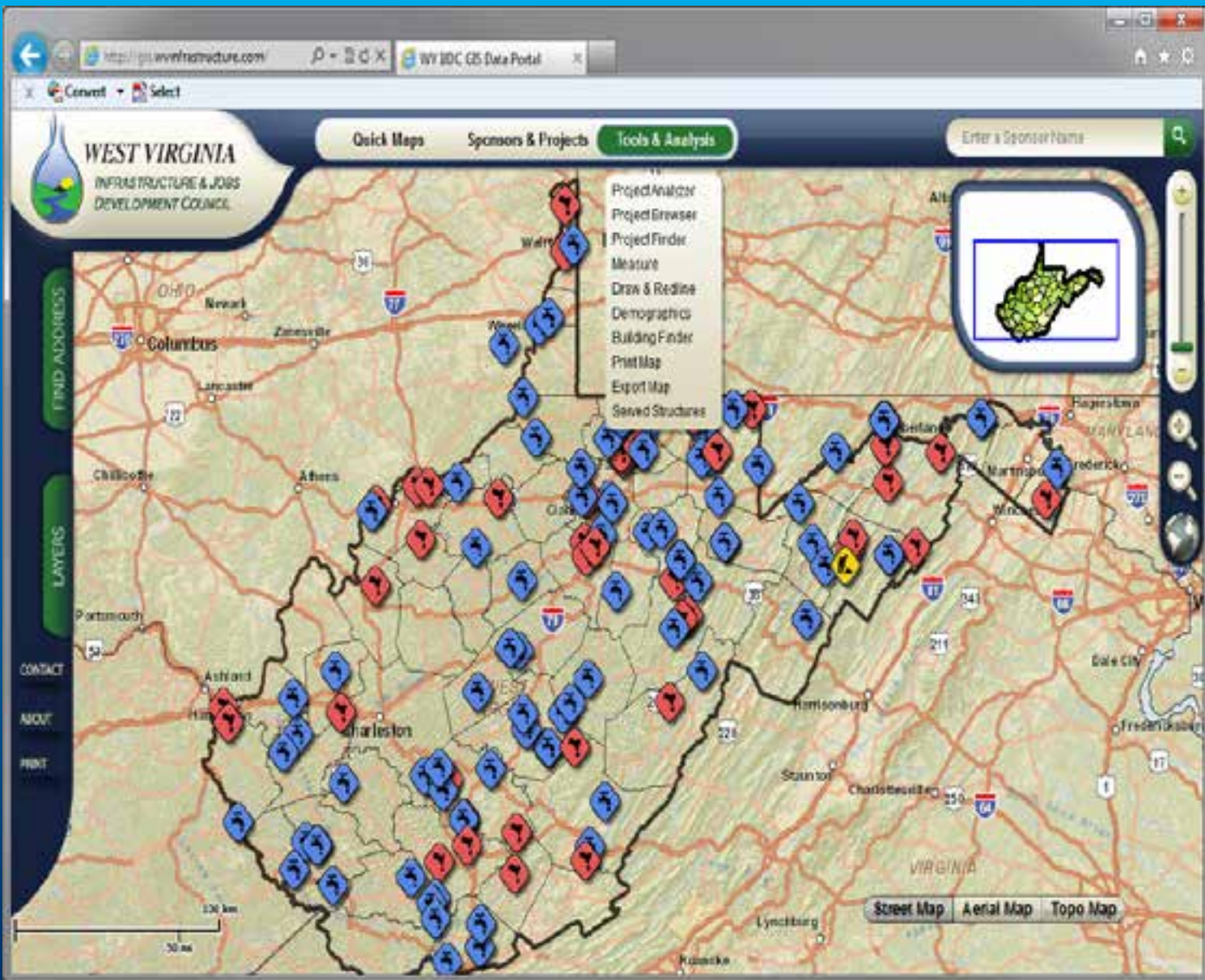
Public Audience

Factors

Limited GIS Skills
Repetitive Needs
Simple Functions
Short vs. Long Term
Costs

Solution

Initial Data
Development
Web Platform
Developed Tools





Local Entities

Factors

Varied GIS Skills

Varied Needs

Varied Functions

Agency vs. Non-Agency

Costs

Solution

Initial Data

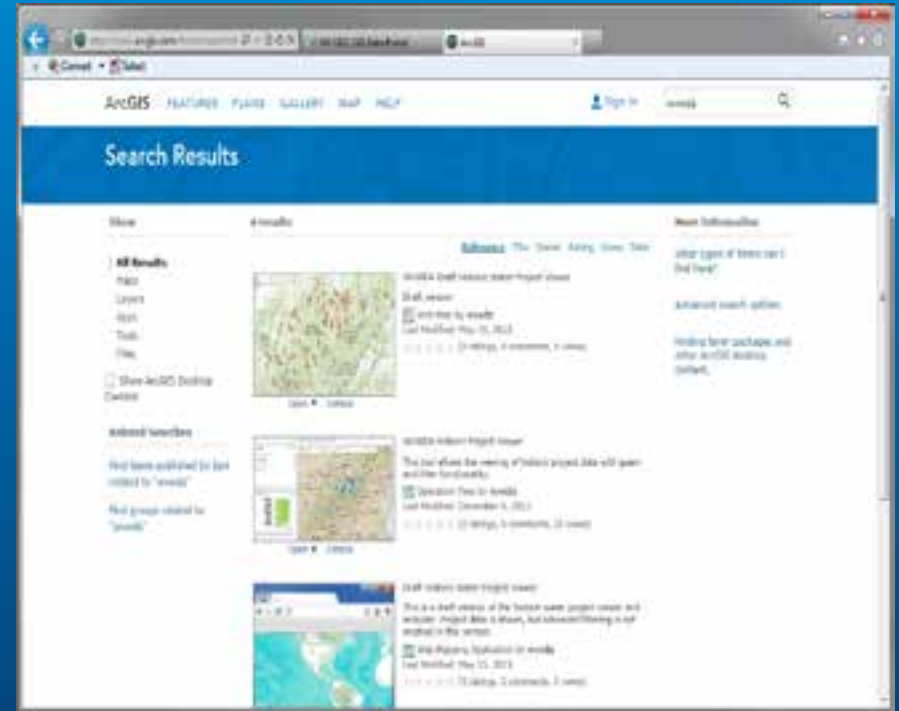
Development

Web Platform

Developed Tools

Data Sharing Options

Online Resources



Physical Media via Office of State GIS Coordinator



Staff

Factors

Varied GIS Skills
Varied Needs
Varied Functions
Need/Function
Dependent

Solution

ArcGIS Desktop Analysis
ESRI for Office Shortcuts
Operations Dashboard
Widgets



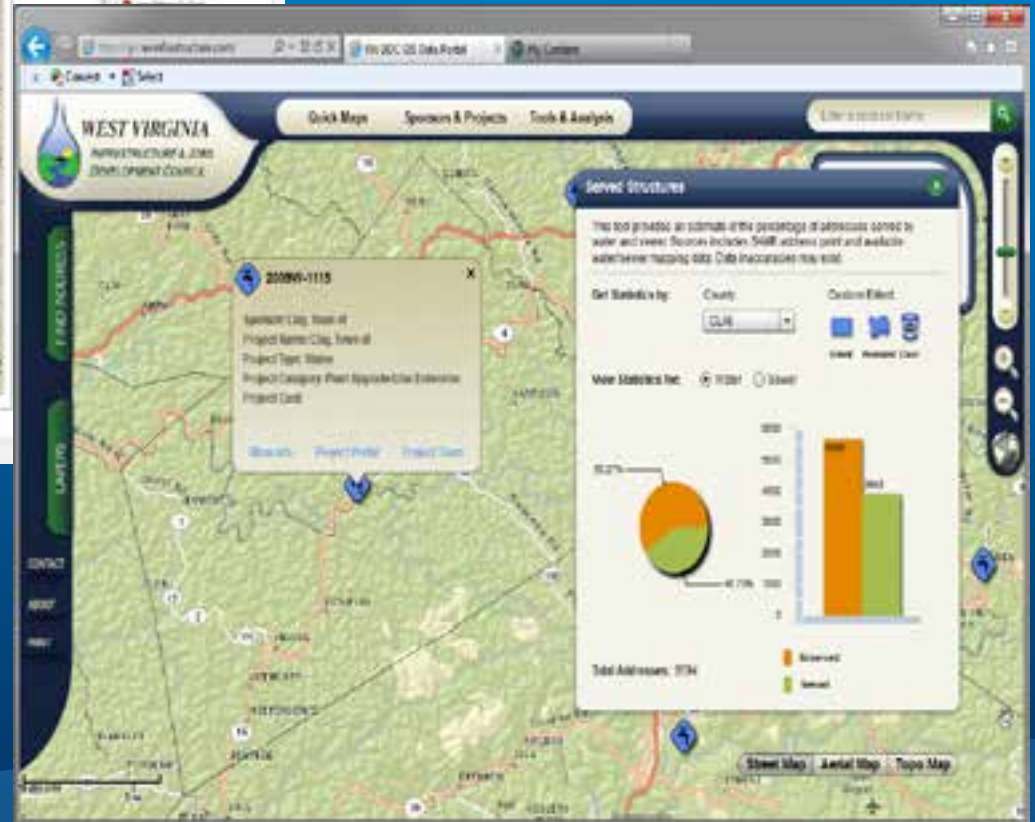
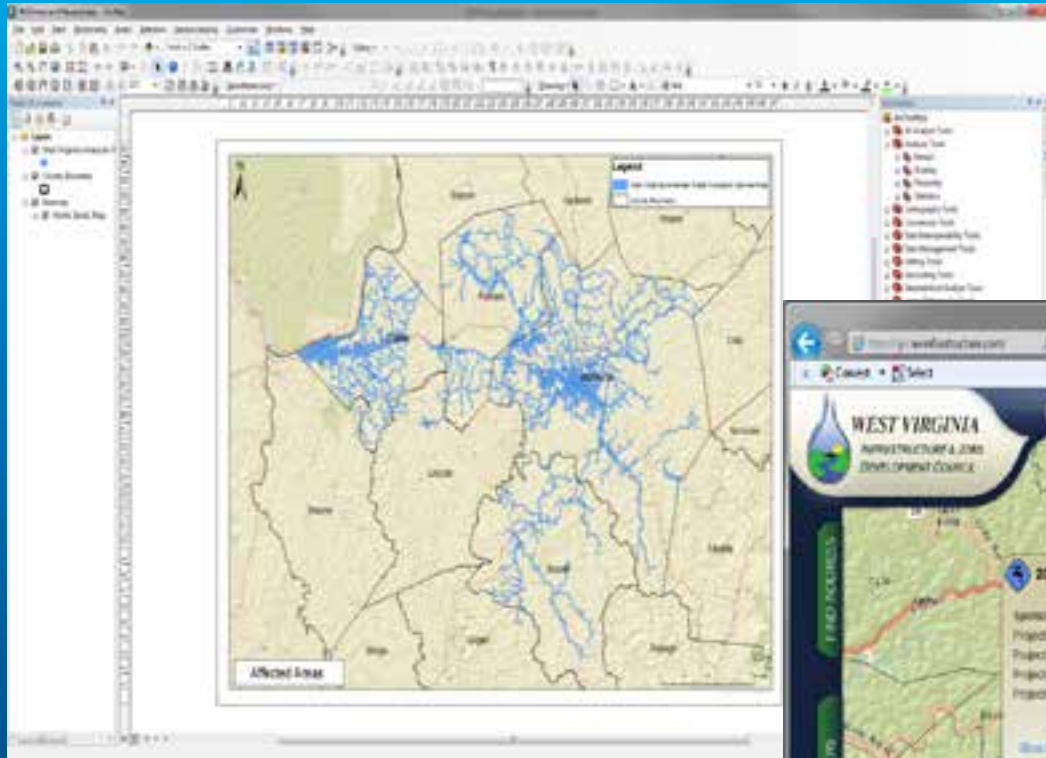
Elected Officials

Factors

Limited GIS Skills
Communication Needs
Limited Functions
Time

Solution

ArcGIS Desktop Analysis
ArcGIS for Server
Presentation
Static Visuals





Questions?