

**IMPROVING LIDAR PROCESSING METHODS FOR
ARCHAEOLOGICAL SITE MANAGEMENT:
A CASE STUDY FROM CANAVERAL NATIONAL
SEASHORE PARK**

Chris Griesbach

Project



- ž June - August 2011: Southeastern Archeological Center (SEAC)
 - Fieldwork at the Canaveral National Seashore Park (or CANA) in New Smyrna, Florida.
 - Archeological data recovery, develop management plan.



Project

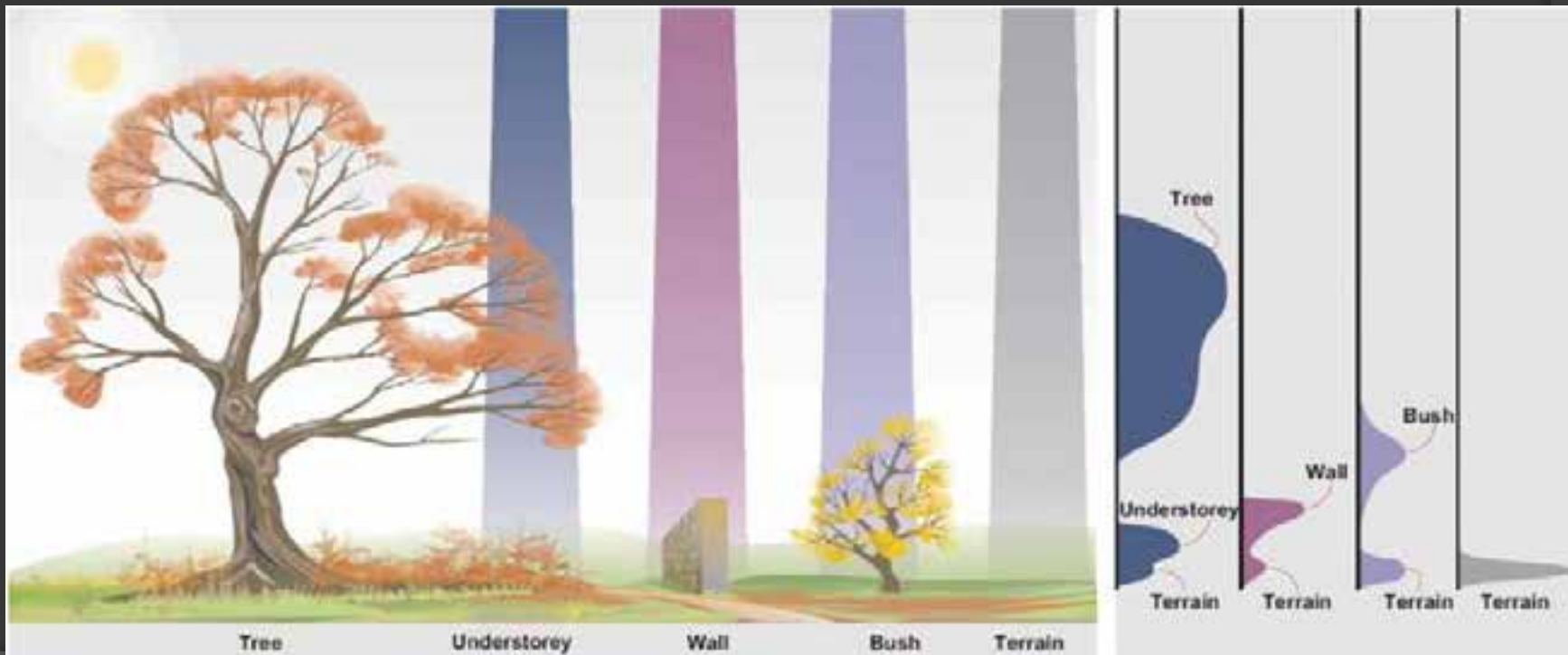


- ž Alliance for Integrated Spatial Technologies (AIST)
 - Research core at the University of South Florida
 - Preserving and protecting the world's cultural and natural heritage through education and global engagement.
- ž Management considerations include erosion processes, habitat restoration, and inaccurate sites boundaries and terrain maps.
- ž Total station data and survey grade GPS coordinates taken at CANA sites.

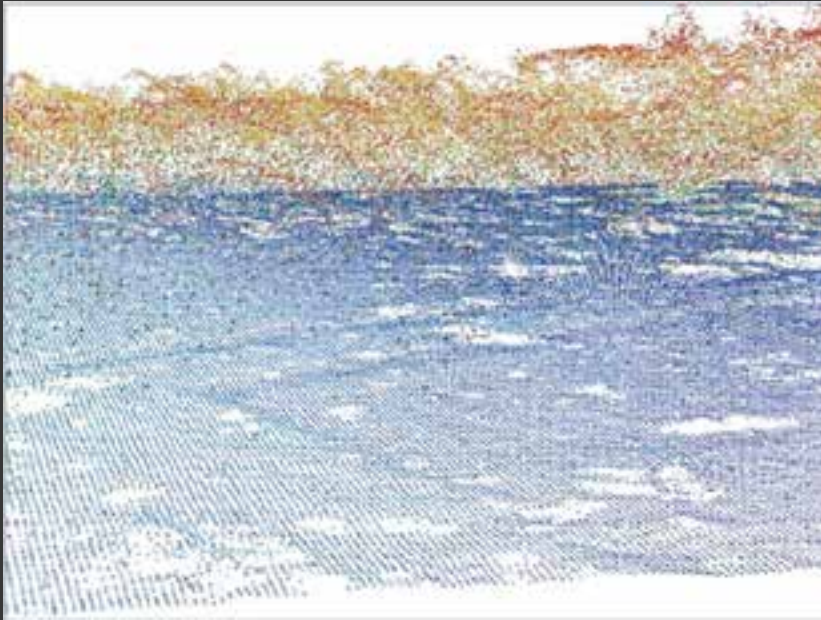


Airborne LiDAR

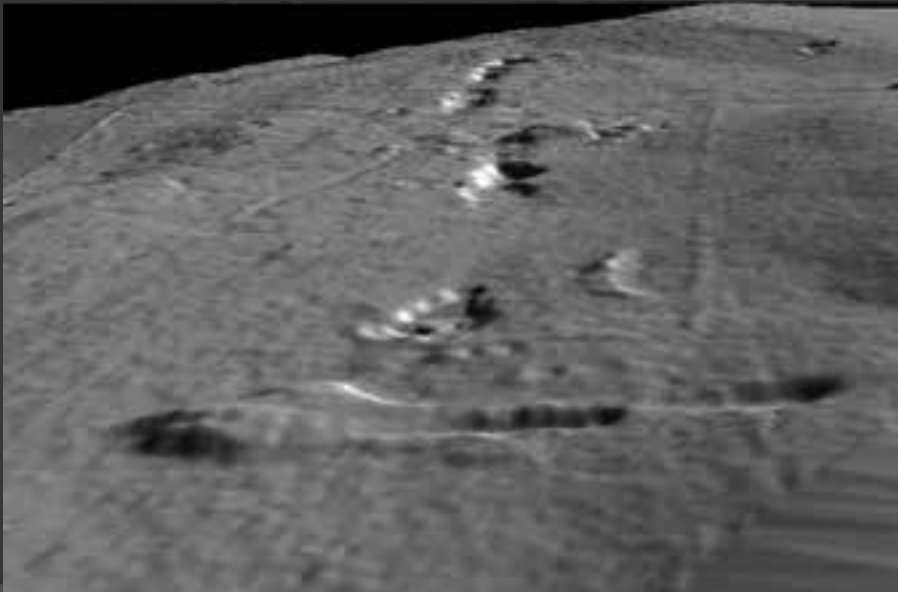
- Remote sensing technique (Light Detection and Ranging).
 - Uses a laser scanner mounted to an airborne platform.
 - Scanner emits near infrared light pulses directed toward the ground at a rate of 30,000 to 100,000 pulses per second.
 - Positions of objects are determined by computing the time delay between the emission of the pulse and each received echo.



Point Clouds



Crutchley 2010



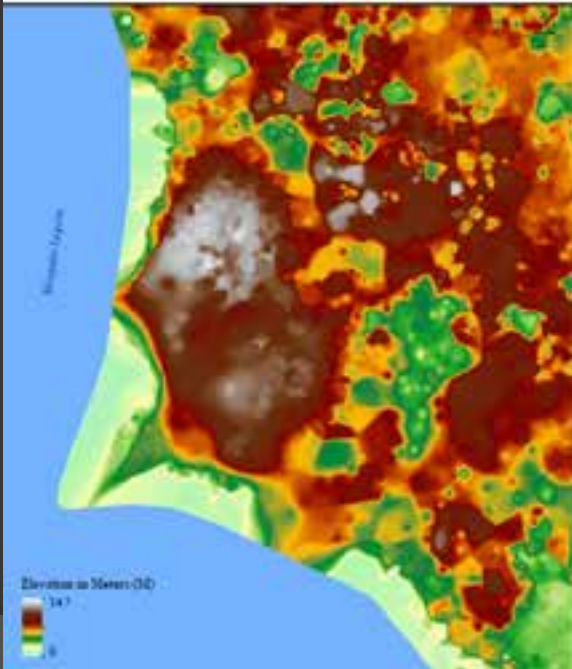
Crutchley 2010

- ž Echoes are mapped into three dimensional point clouds.
 - Provide direct range measurements between the laser scanner and earth's topography.
- ž Data points are given real world coordinates through the combination of a Global Positioning System (GPS) and an Inertial Measurement Unit (IMU).
- ž Digital Elevation Models (DEMs)
 - Represent a “bare-earth” digital visualization of the terrain without any obscuring points related to vegetation or above ground structures.

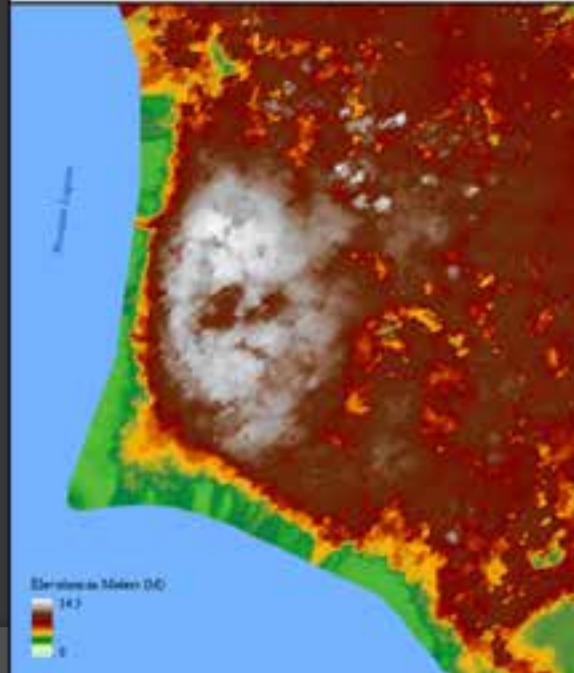
LiDAR issues

- ž Algorithms are used to automatically eliminate LiDAR points that are considered “errors”.
 - Archaeological features are sometimes mistaken for these “errors” and accidentally eliminated from the collected LiDAR data.
 - Such occurrences can have numerous negative effects in terms of the preservation and study of the archaeological feature(s) in question.

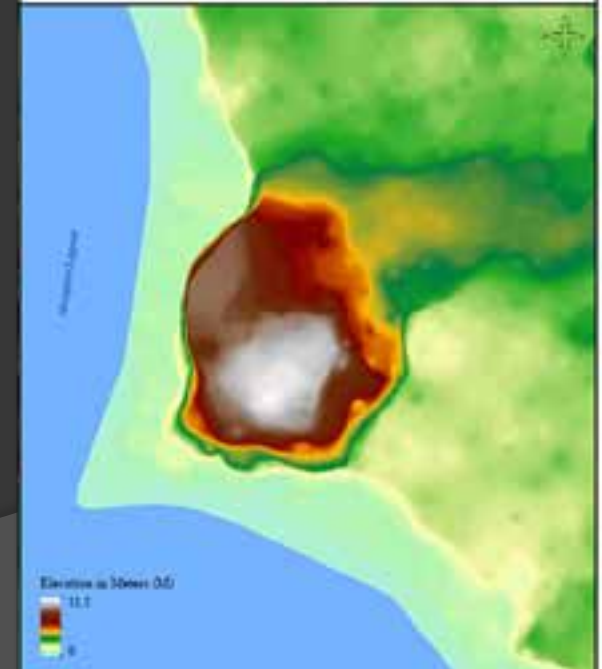
DEM Created from 1999 Unprocessed Aerial LiDAR Data



DEM Created from 2004 Unprocessed Aerial LiDAR Data



DEM Created from 2006 Processed Aerial LiDAR Data

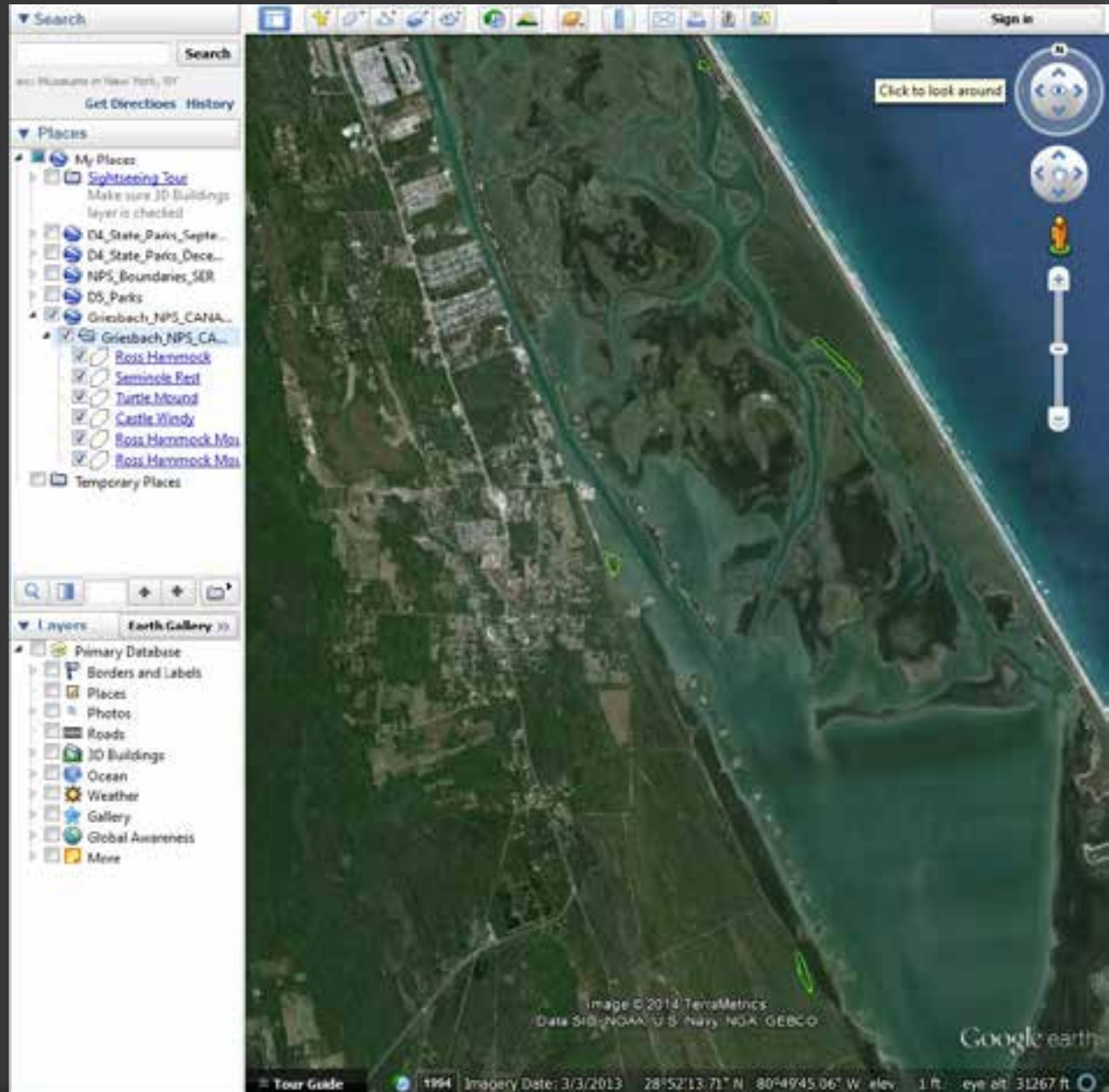


Thesis

Ground-based, survey-grade GPS coordinates and total station data can complement LiDAR data.

- Provide multiple sources of additional information regarding archaeological features at different scales of precision.

What data processing methods can be used in conjunction with supplemental data to improve archaeological site LiDAR signatures?



LiDAR Data Acquisition

DIGITAL COAST
NOAA COASTAL SERVICES CENTER

Data Access Viewer

Enter Location: -85.808, 28.894 [Go] [Draw Area]

no buffer

Refine Search

Data Type: [Select]

Licensed Data: Include

Data Provider: [Select]

Results (20) | Data Detail | Cart (0)

Zoom | Share | Clear | Sort by: Data Type (A-Z)

- 2006 Volusia County Lidar**
Volusia County, FL | LAZ file
Lidar: 1,294,730 Pts | 4 MB | Add to Cart
- 2006 USACE Topo/Bathy Lidar**
USACE | LAZ file
Lidar: 145,496 Pts | 0 MB | Add to Cart
- 2004 USACE Topo/Bathy Lidar**
USACE | LAZ file
Lidar: 49,470 Pts | 0 MB | Add to Cart
- 1999 Fall East Coast Lidar**
USGS, NASA, NOAA | Add to Cart
Lidar: 15,846 Pts | 0 MB
- 2004 Gulf of Mexico Orthorectified Radar Image**
NOAA

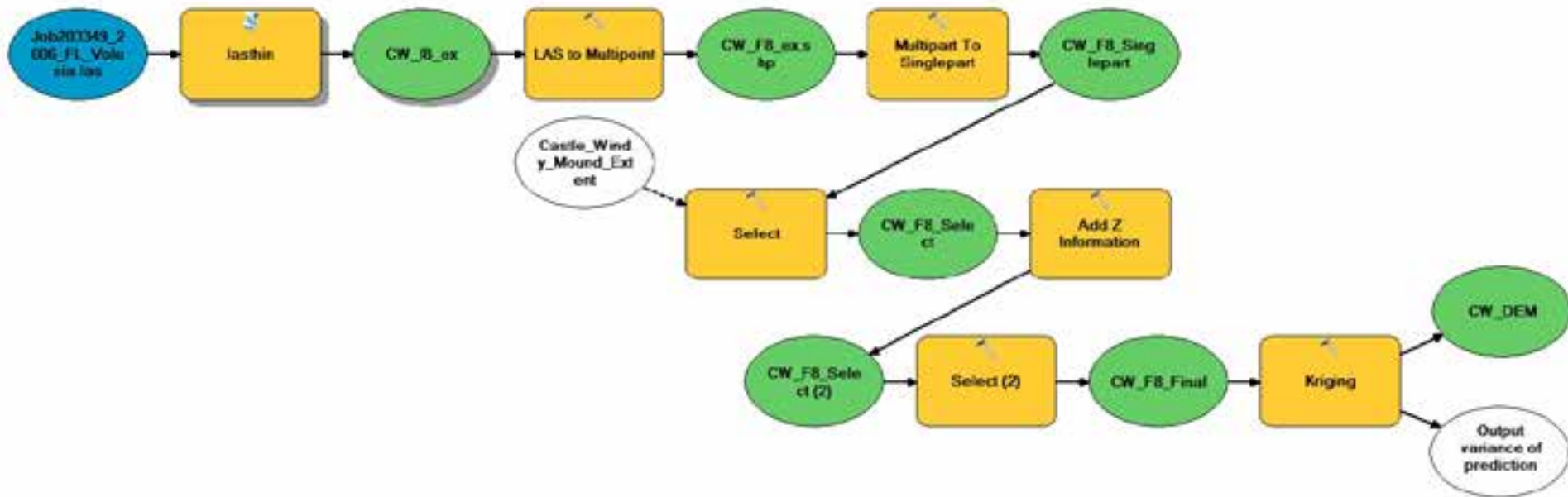
Latitude: 28.9013 Longitude: -80.8074 Scale: 1:9028

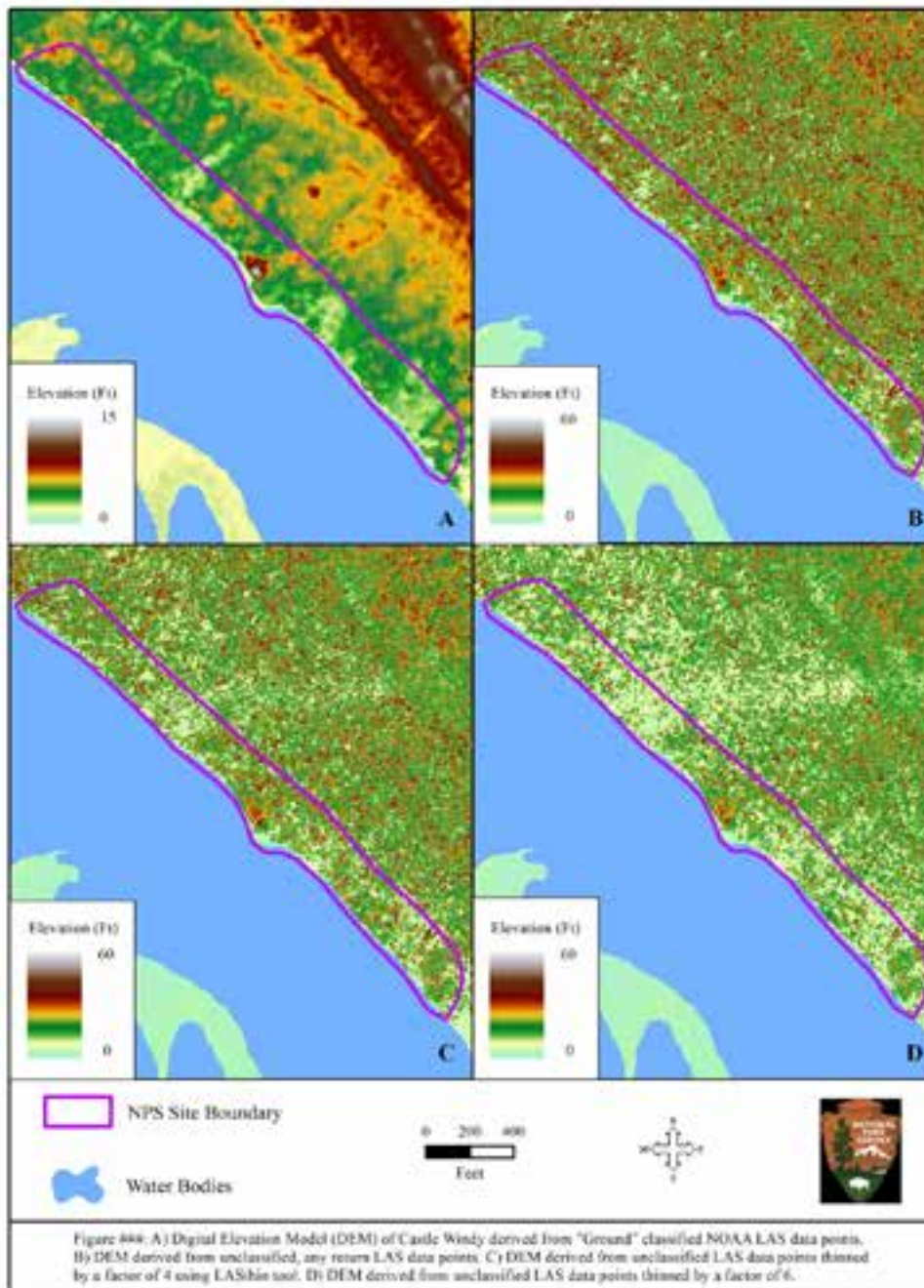
Base Maps: Imagery | Streets

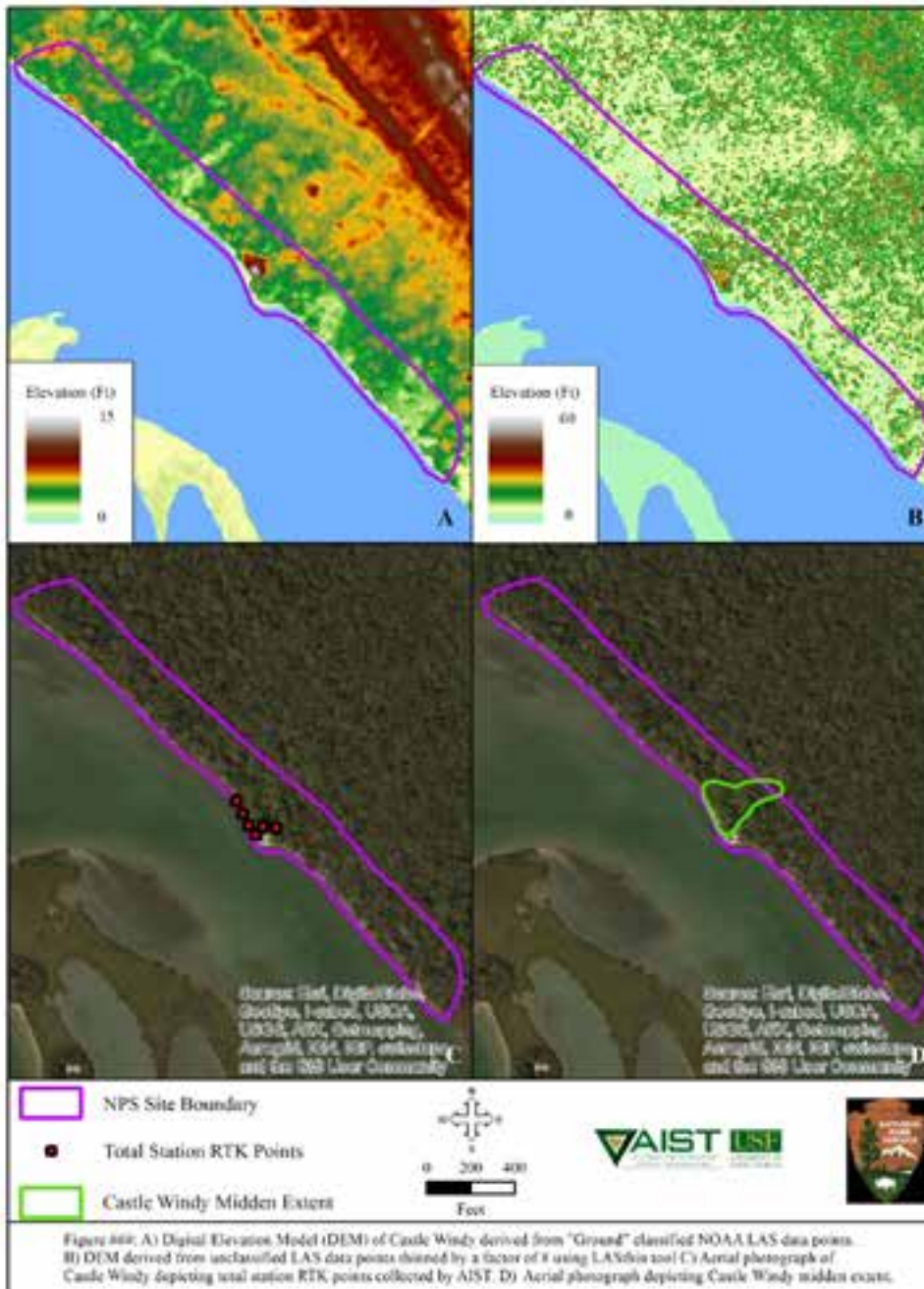
United States Department of Commerce | National Oceanic and Atmospheric Administration

Usage Stats | Contact Us | Privacy Policy | Link Disclaimer | USGS.gov

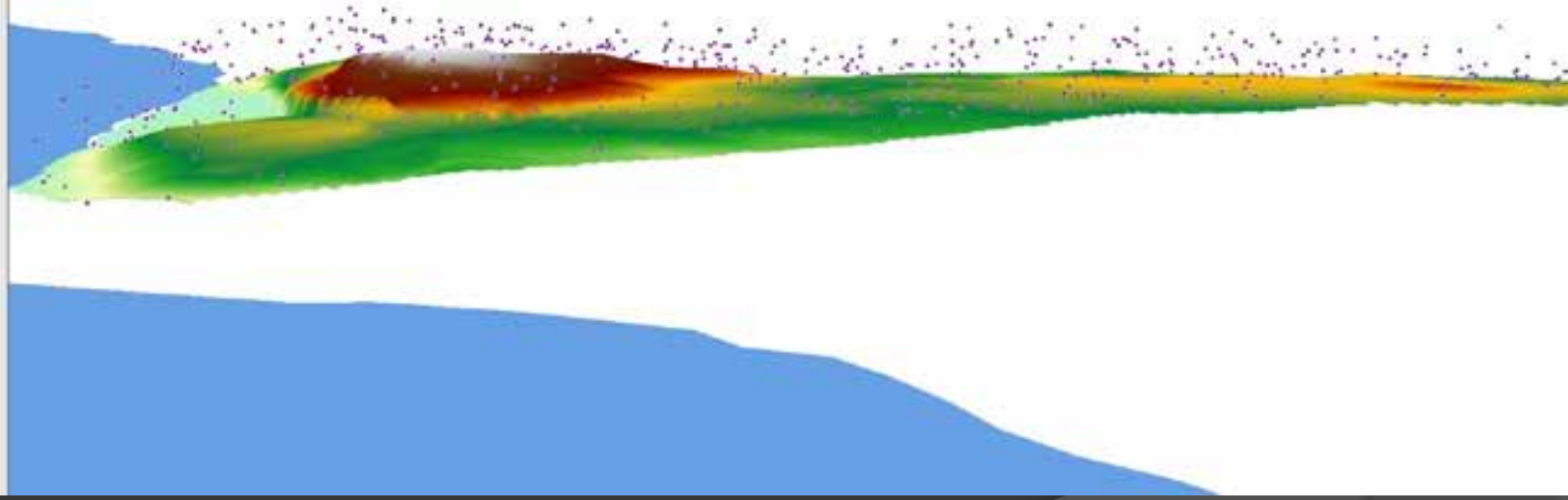
Methods

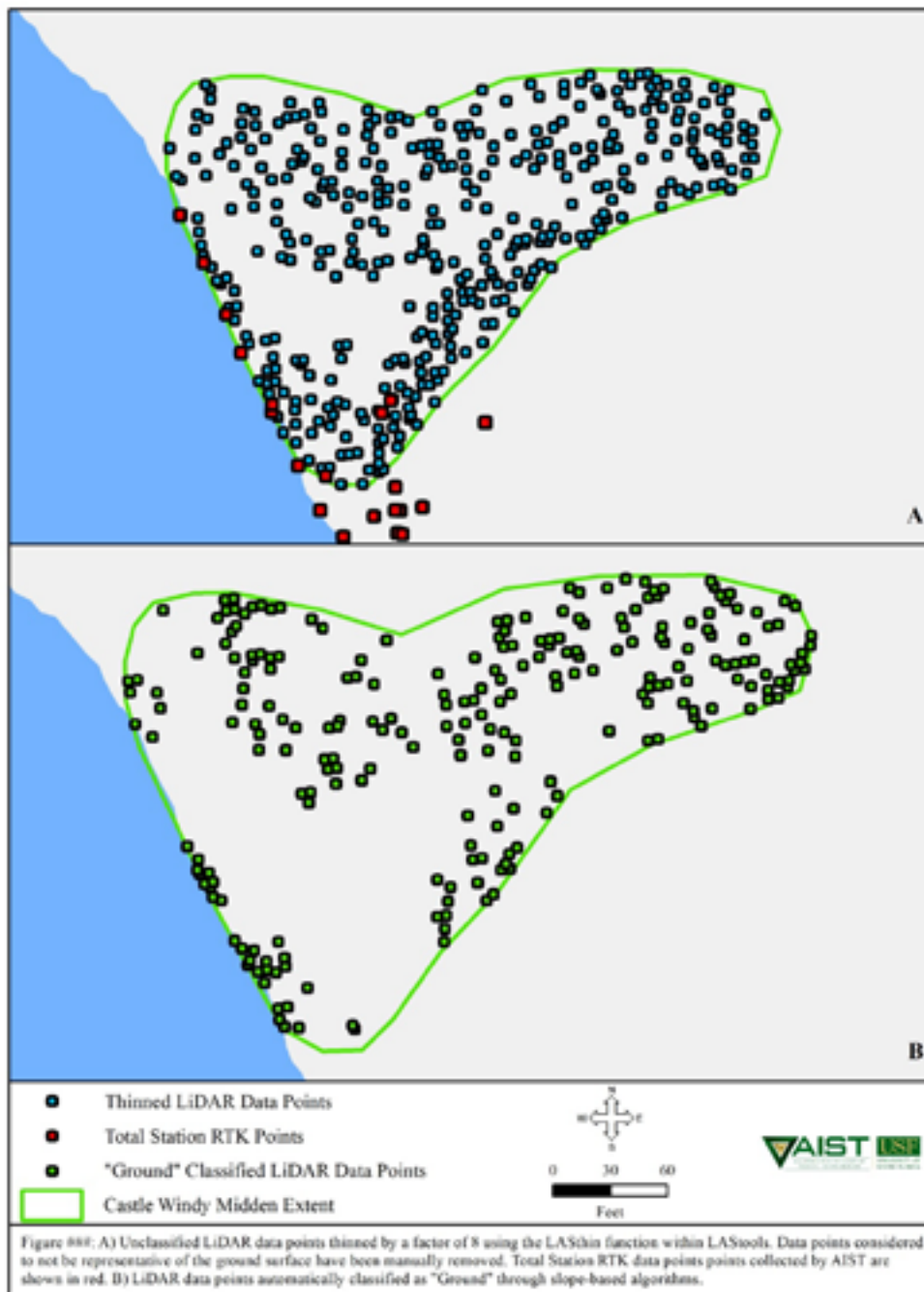


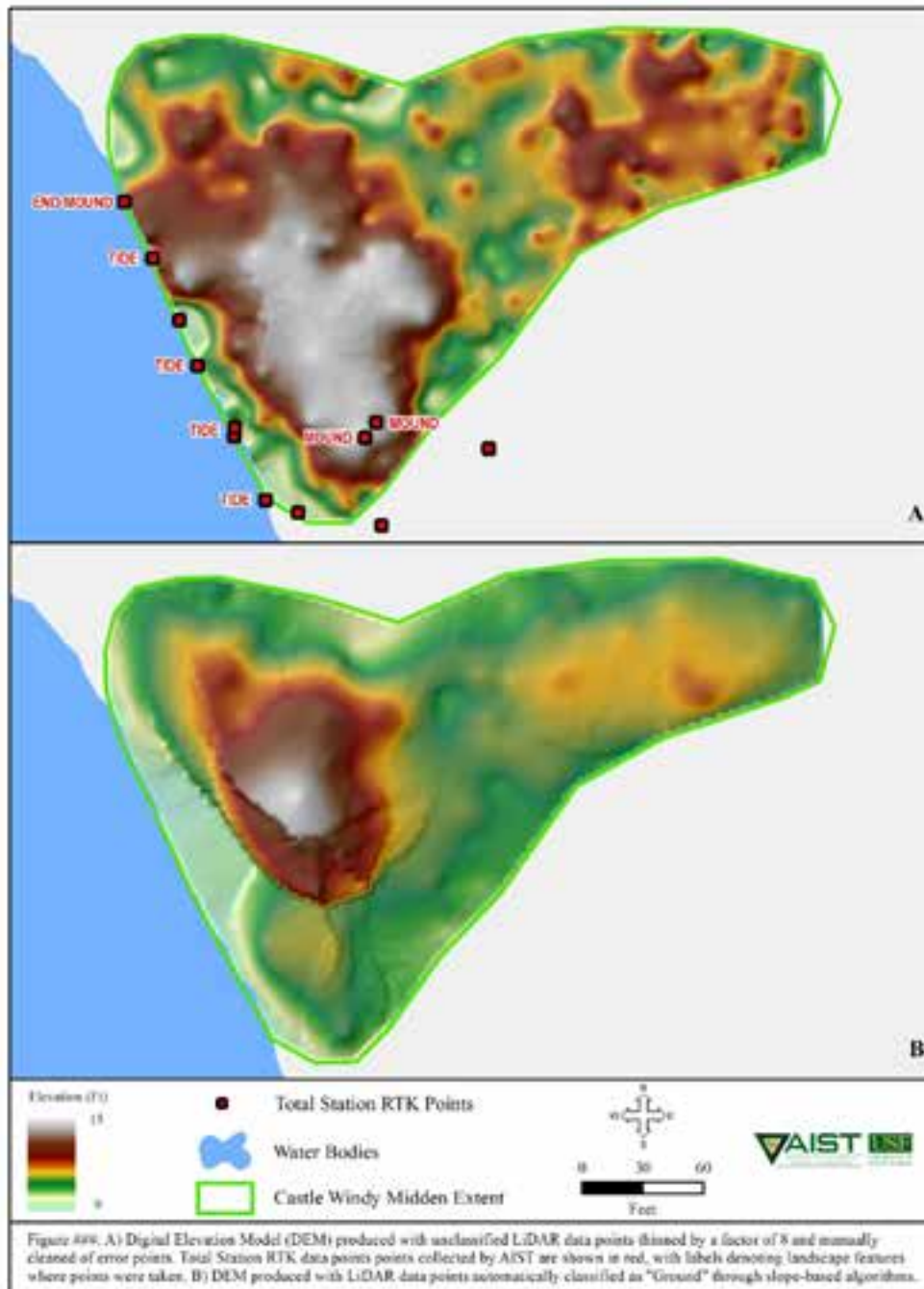




- Scene Layer
- CV_38_Drwa21
- Carto Windy Waterbody
- gmi_jan_msk
 - Value
 - High: 0.0001
 - Low: 0.20472







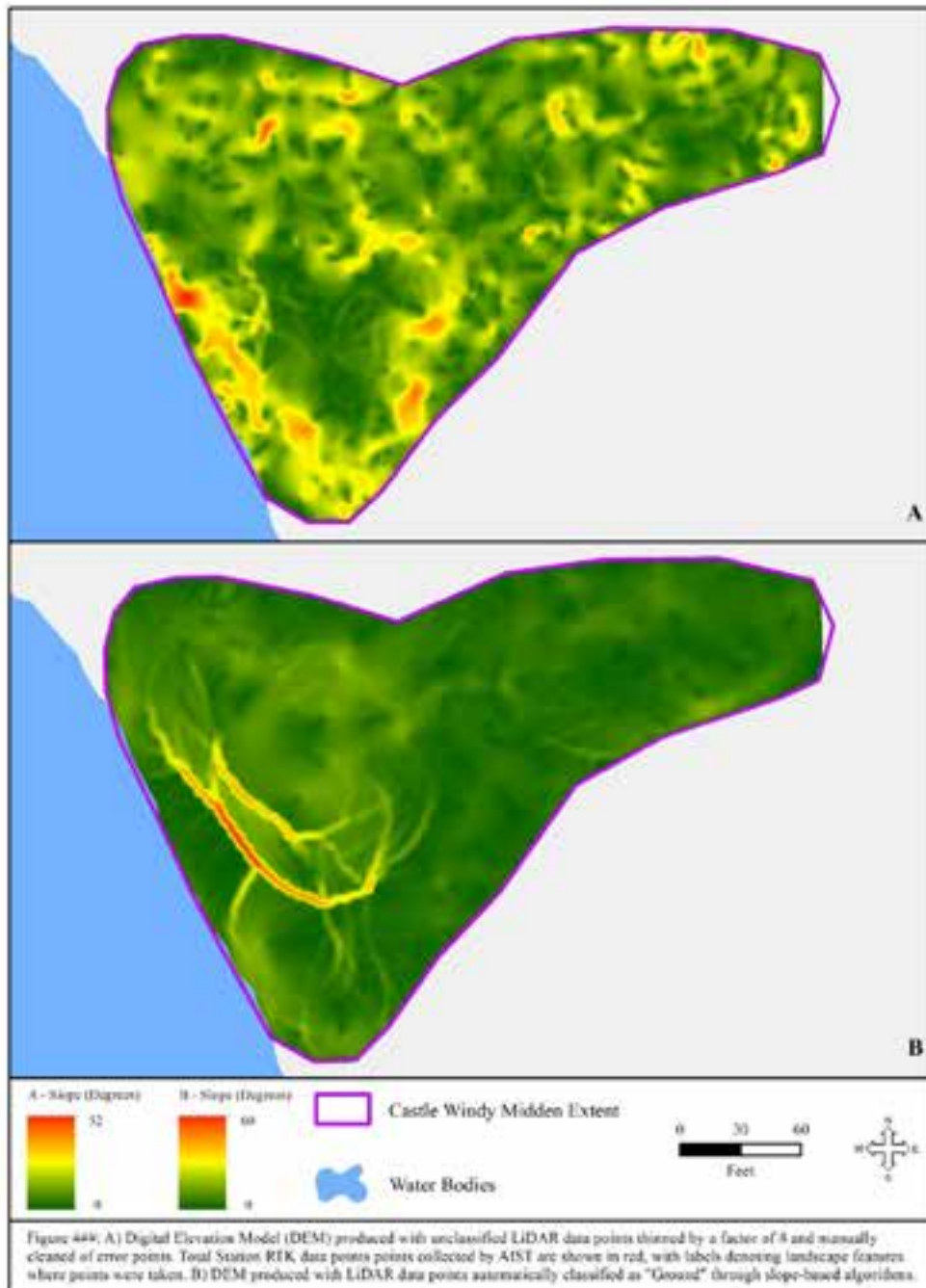


Figure 444: A) Digital Elevation Model (DEM) produced with unclassified LIDAR data points thinned by a factor of 8 and manually cleaned of error points. Total Station RIK data points collected by AIST are shown in red, with labels denoting landscape features where points were taken. B) DEM produced with LIDAR data points automatically classified as "Ground" through slope-based algorithms.

▼ Search

Search

to: Museums in New York, NY

[Get Directions](#) [History](#)

▼ Places

- My Places
 - Sightseeing Tour
 - Make sure 3D Buildings layer is checked
 - D4_State_Parks_Septe...
 - D4_State_Parks_Dece...
 - NPS_Boundaries_SER
 - DS_Parks
 - Griesbach_NPS_CANA...
 - Griesbach_NPS_CA...
 - Ross Hammock
 - Seminole Rest
 - Turtle Mound
 - Castle Windy
 - Ross Hammock Mos
 - Ross Hammock Mos
- Temporary Places

Layers

- Primary Database
 - Borders and Labels
 - Places
 - Photos
 - Roads
 - 3D Buildings
 - Ocean
 - Weather
 - Gallery
 - Global Awareness
 - More



Click to look around



Image © 2014 TerraMetrics
Data SIO, NOAA, U.S. Navy, NGA, GEBCO

Google earth

Reference Cited

Crutchley, Simon

2010 The Light Fantastic: Using airborne lidar in archaeological survey. Swindon: English Heritage.