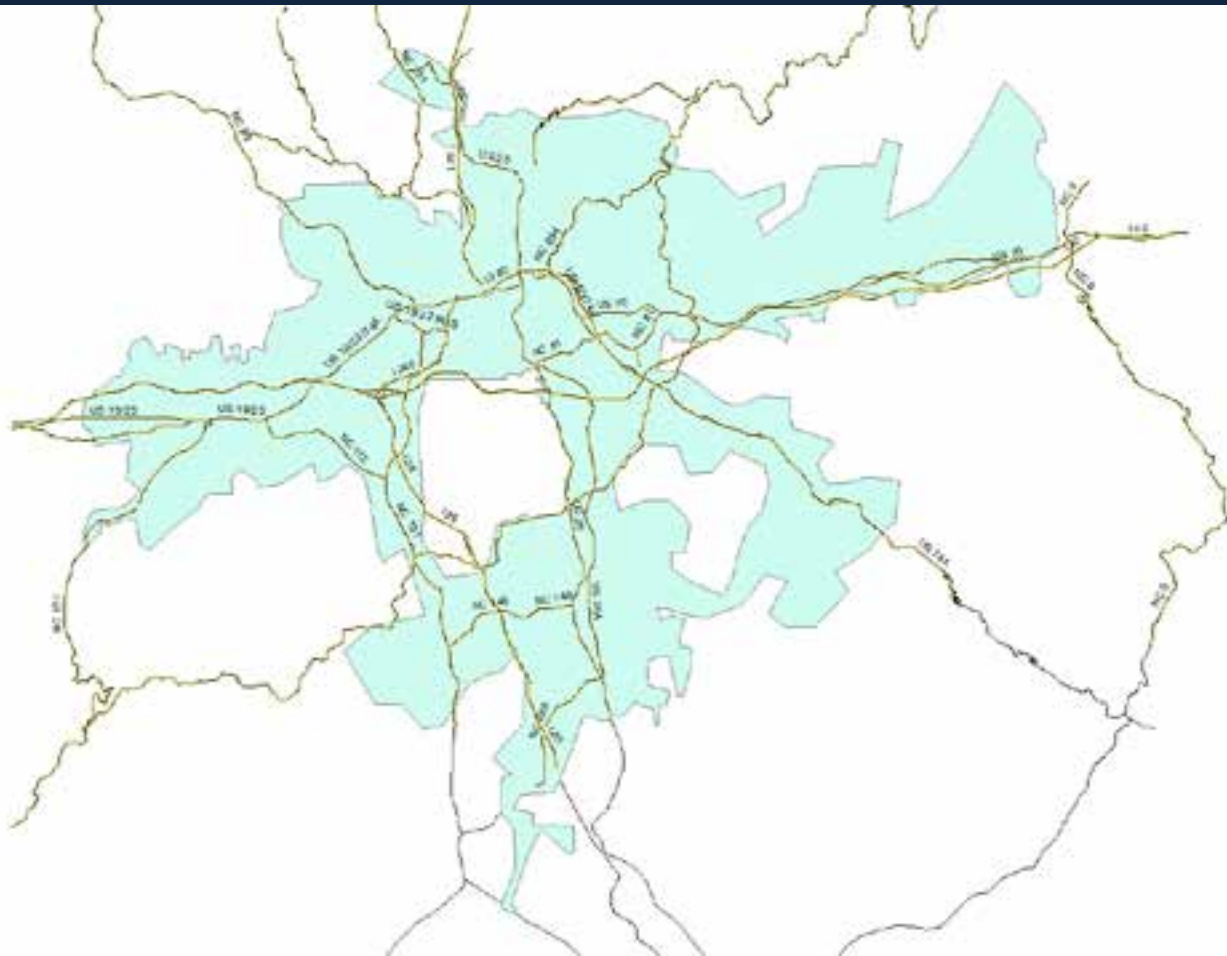
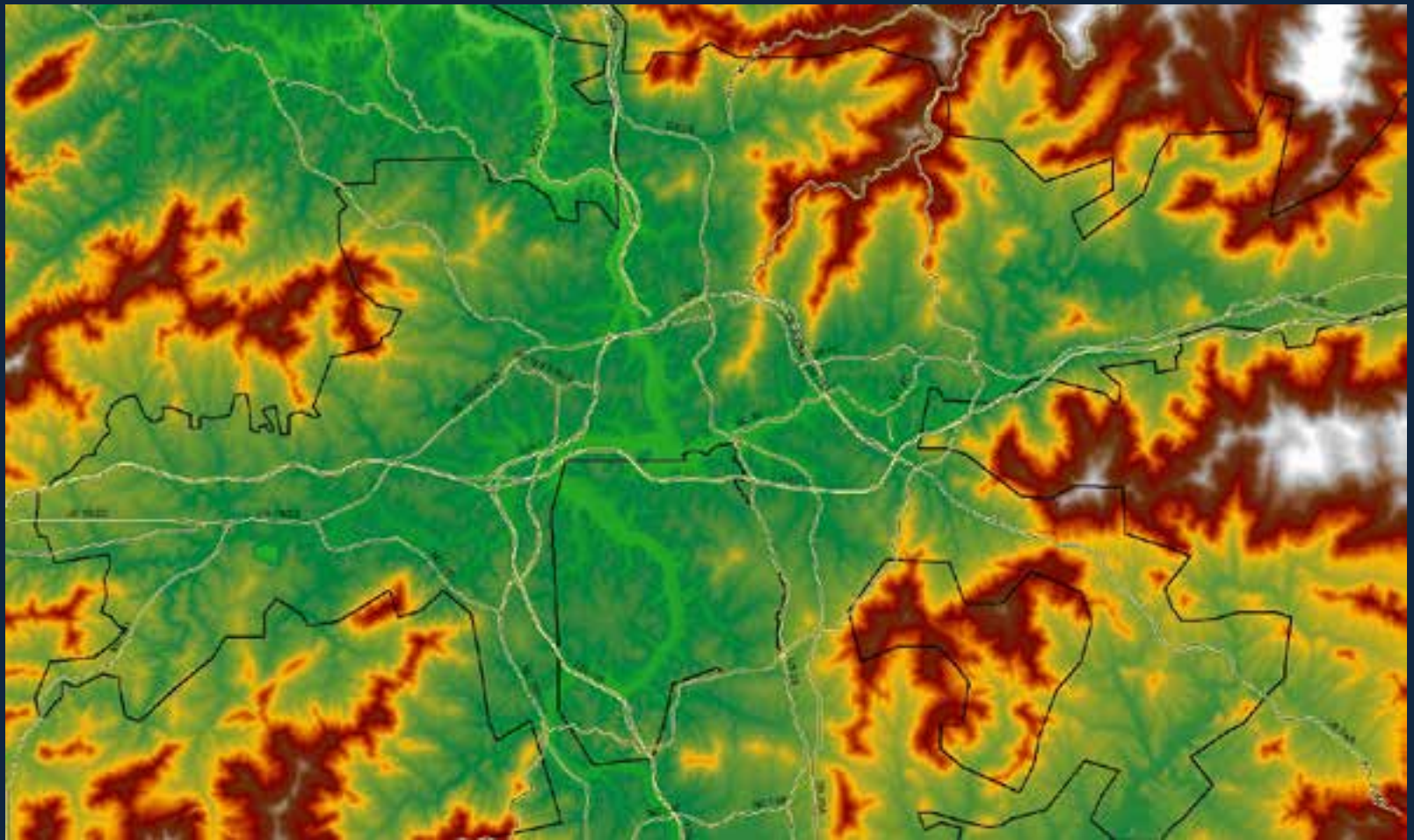


Mapping Pressures in Pressure Zones

W. Bradley Davis

Service Area



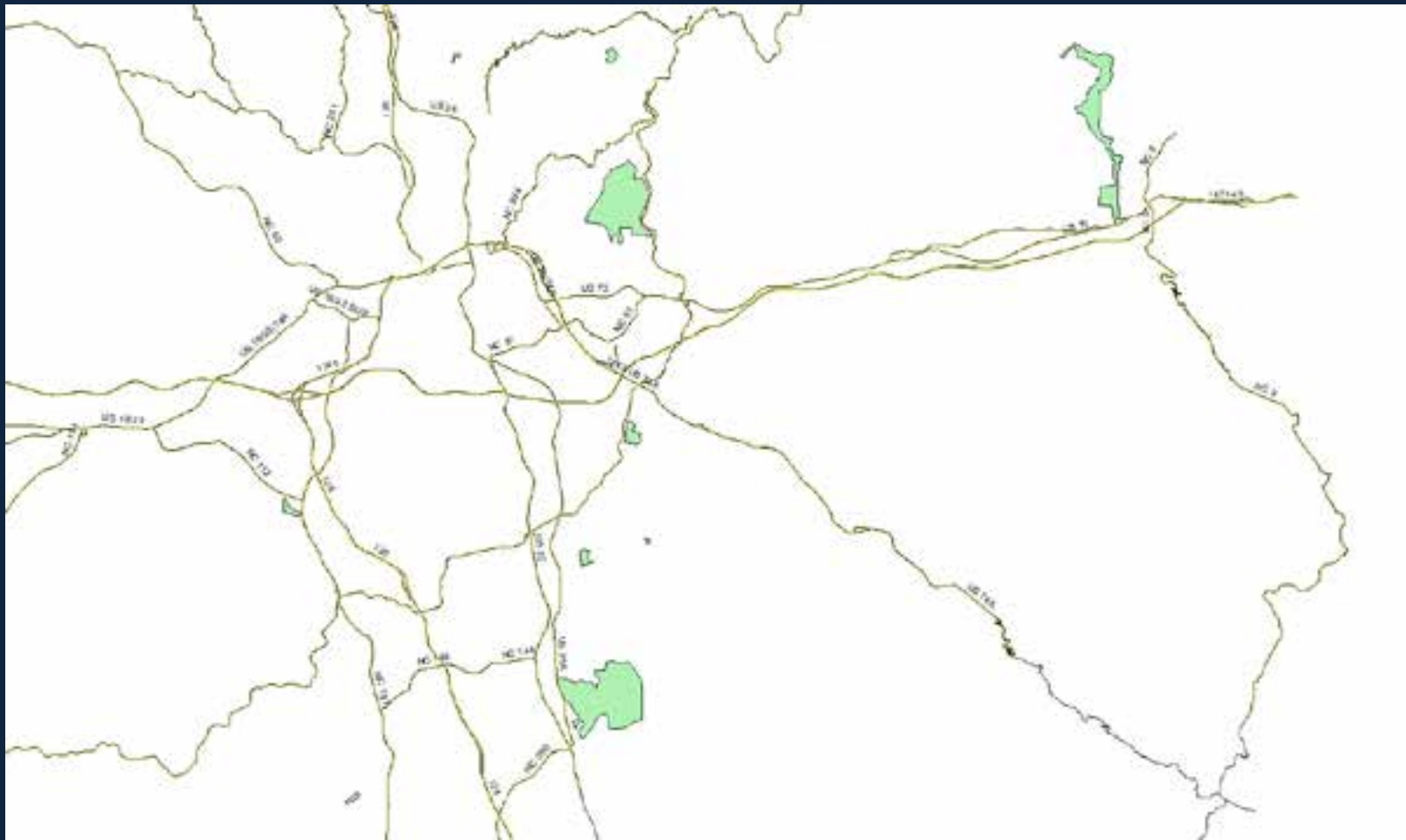


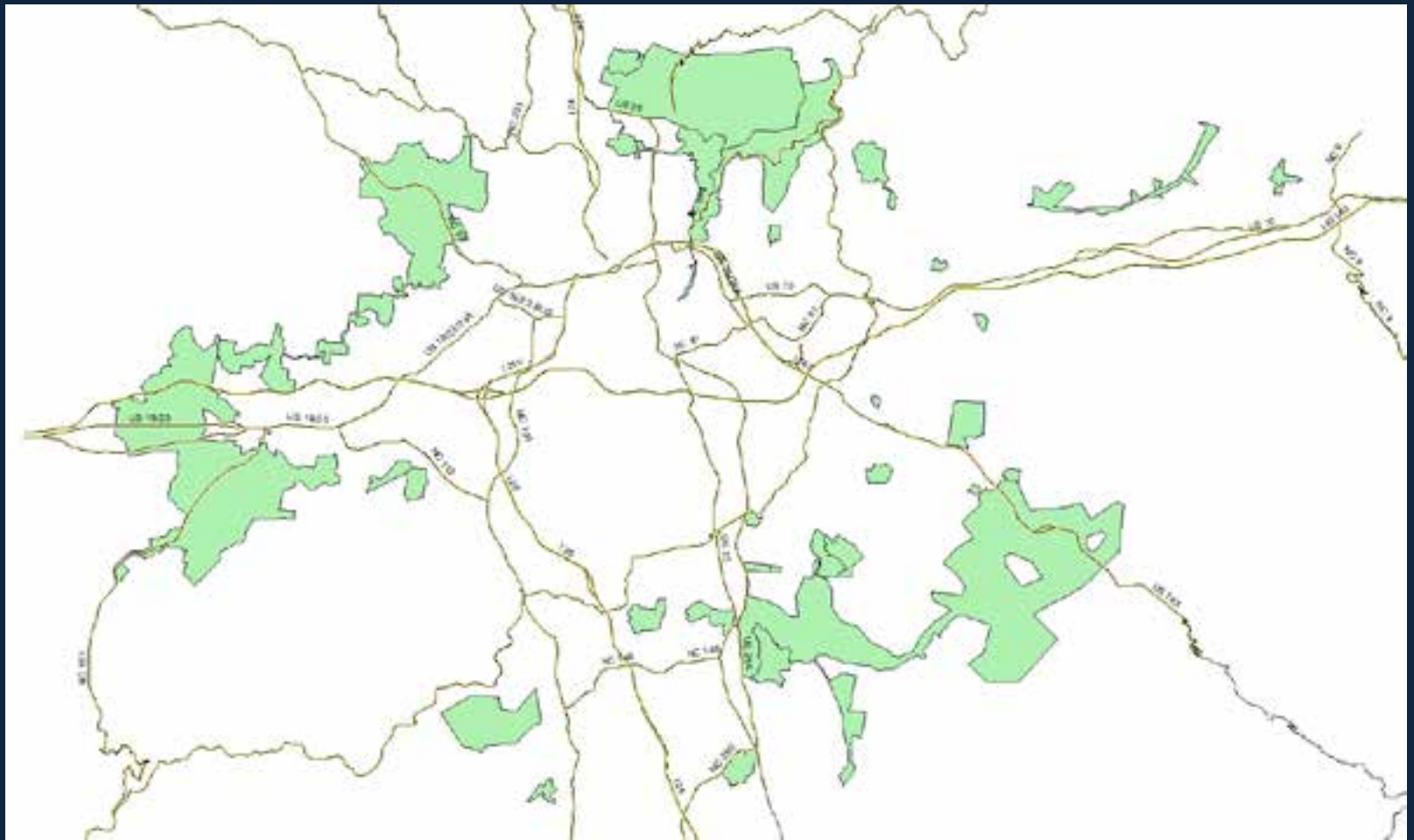
Background

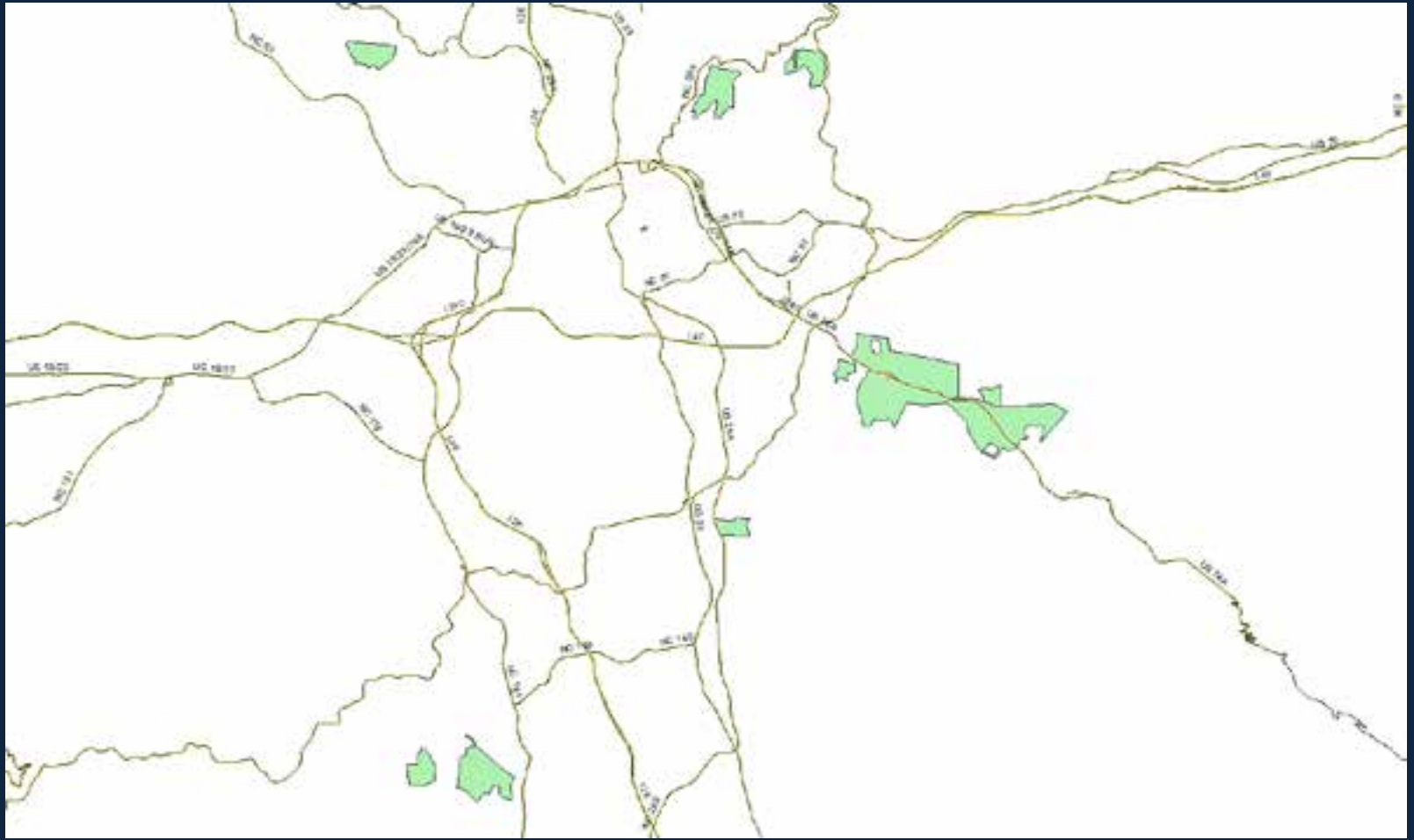
- 125,000 customers
- Elevation range 1950 ft to 3600 ft

Infrastructure for Pressure Zones

- 44 Pump Stations
- 35 Tanks
- 17 PRVs





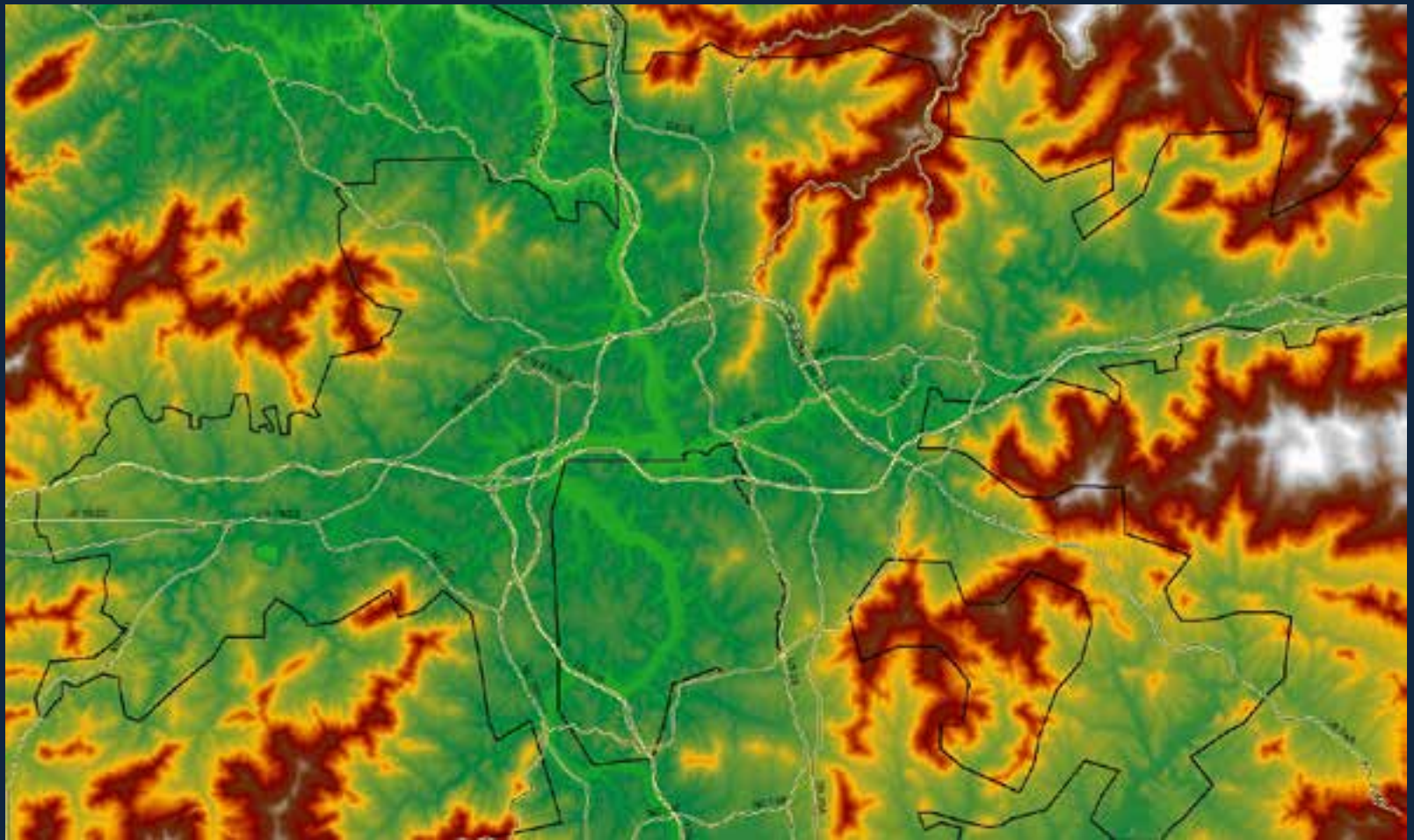


Non Revenue Water

- Leaks
- Theft
- Unreported water
- Water Pressure

Narrowed the focus

- Not all pressure zones are the same
- Removed zones regulated by a PRV
- Removed the self contained
- Serves a larger number of customers
- Diverse Topography

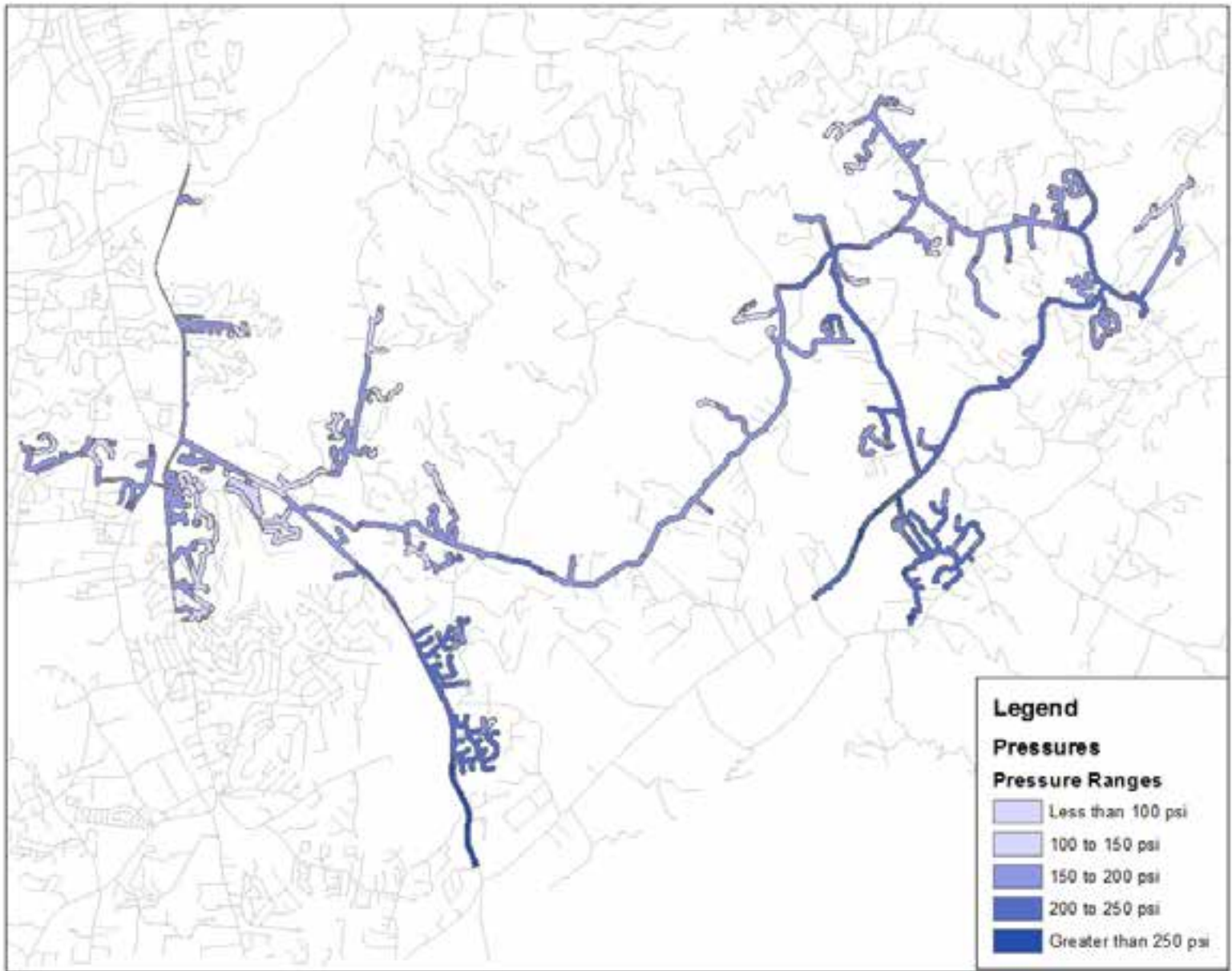


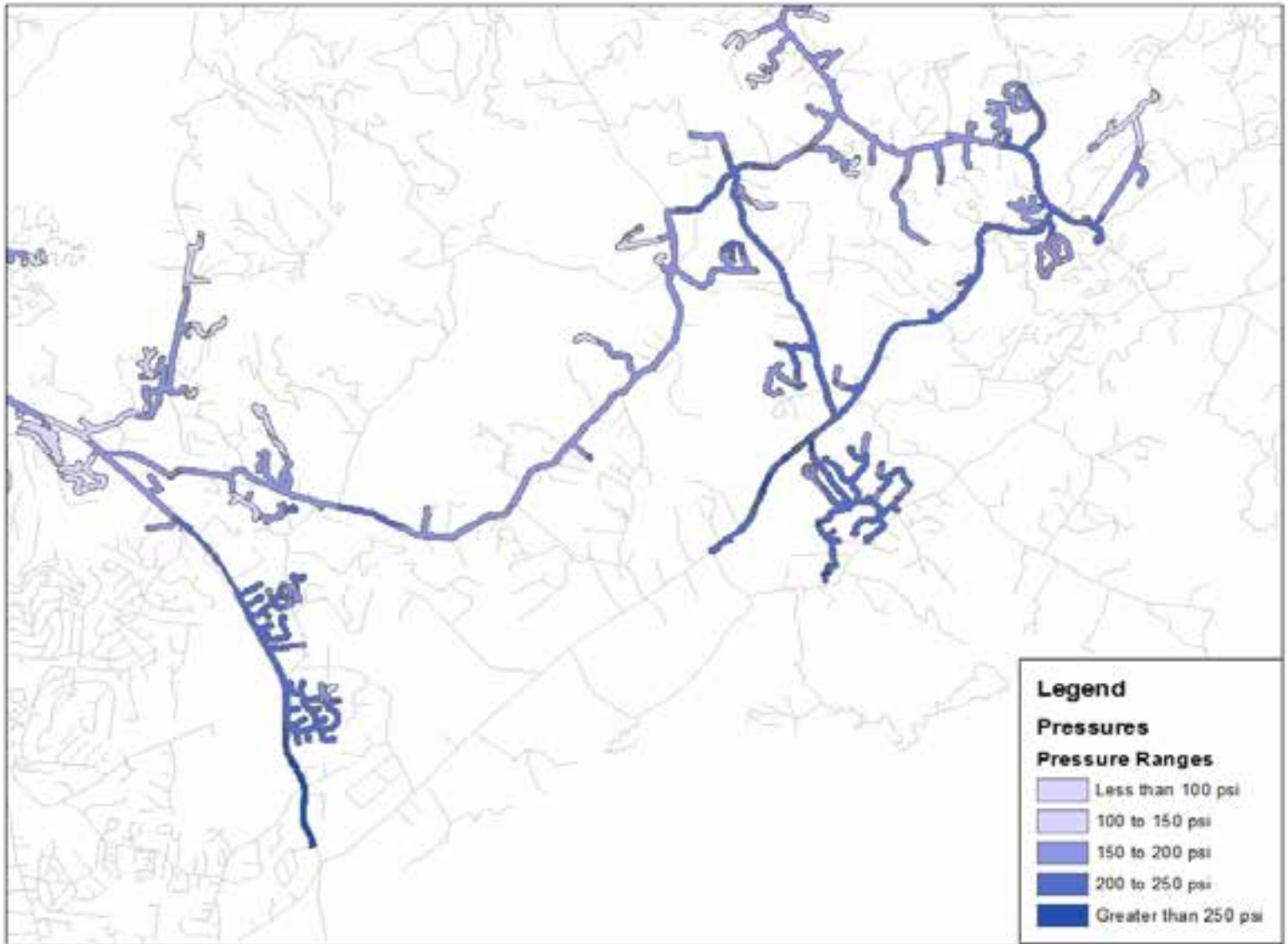
Obtain and Organize Information

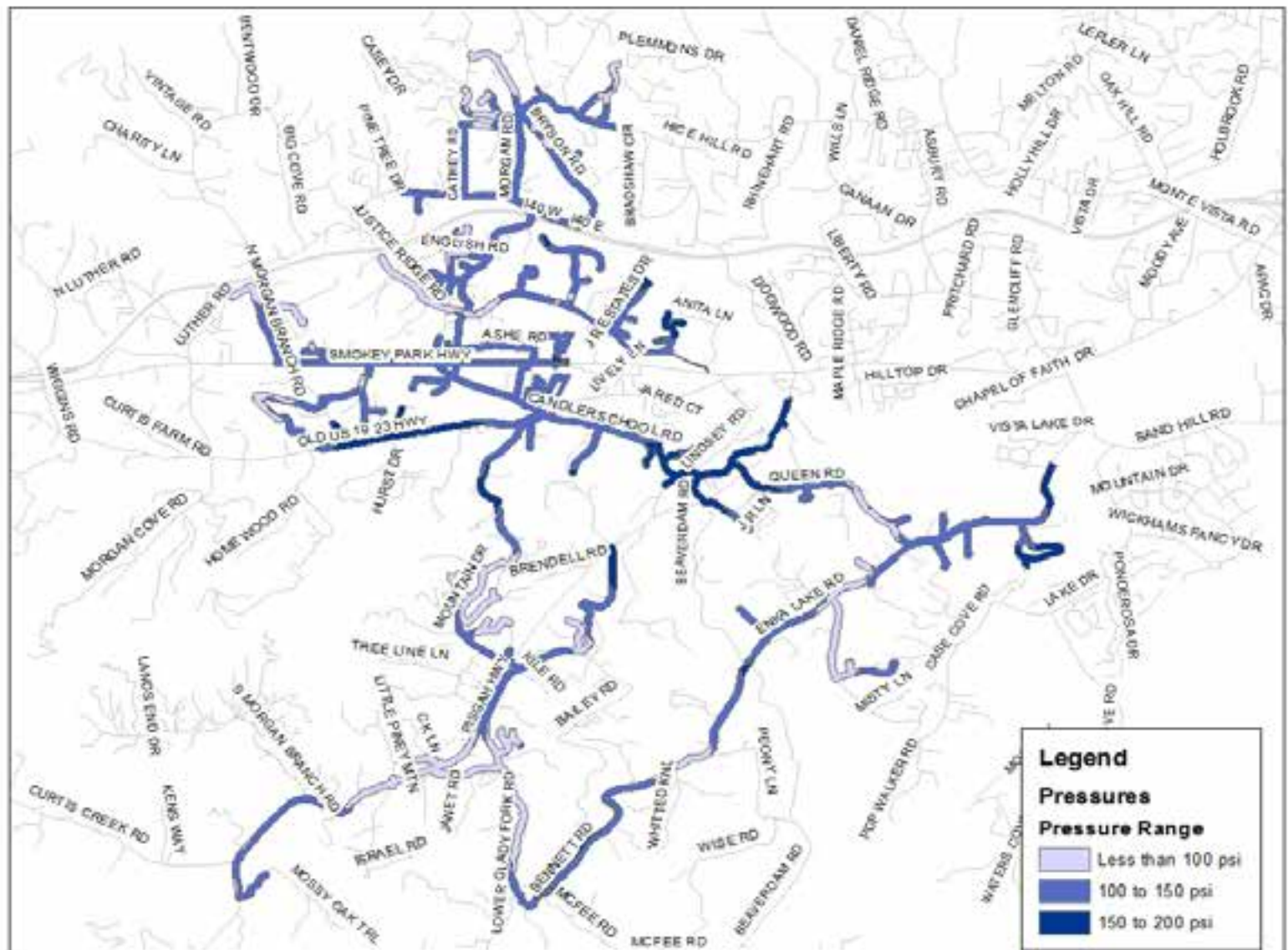
- Elevations and the expected pressure ranges
- Buffered Water Line Layer
- Ran Definition Queries

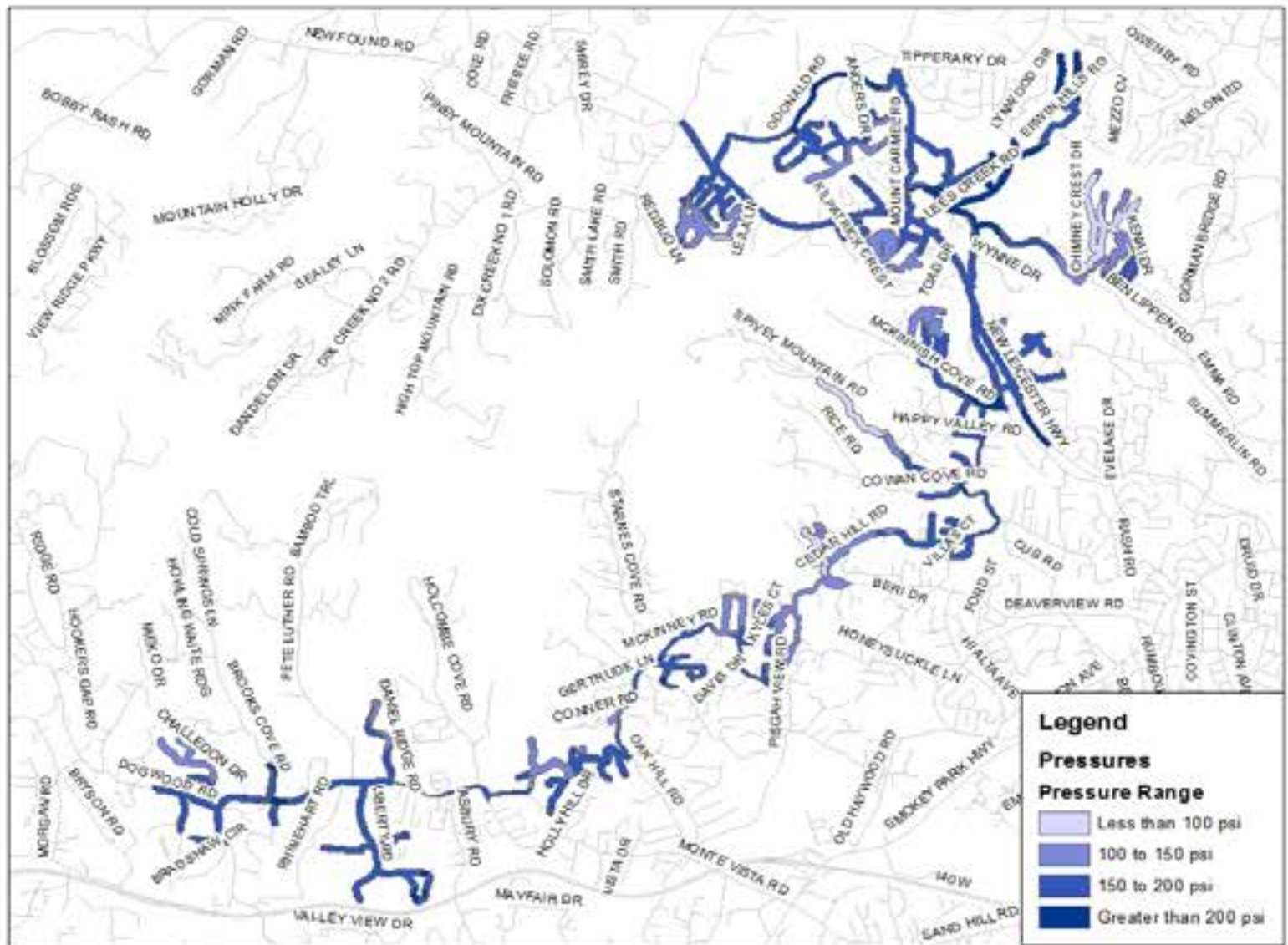
GIS Tools

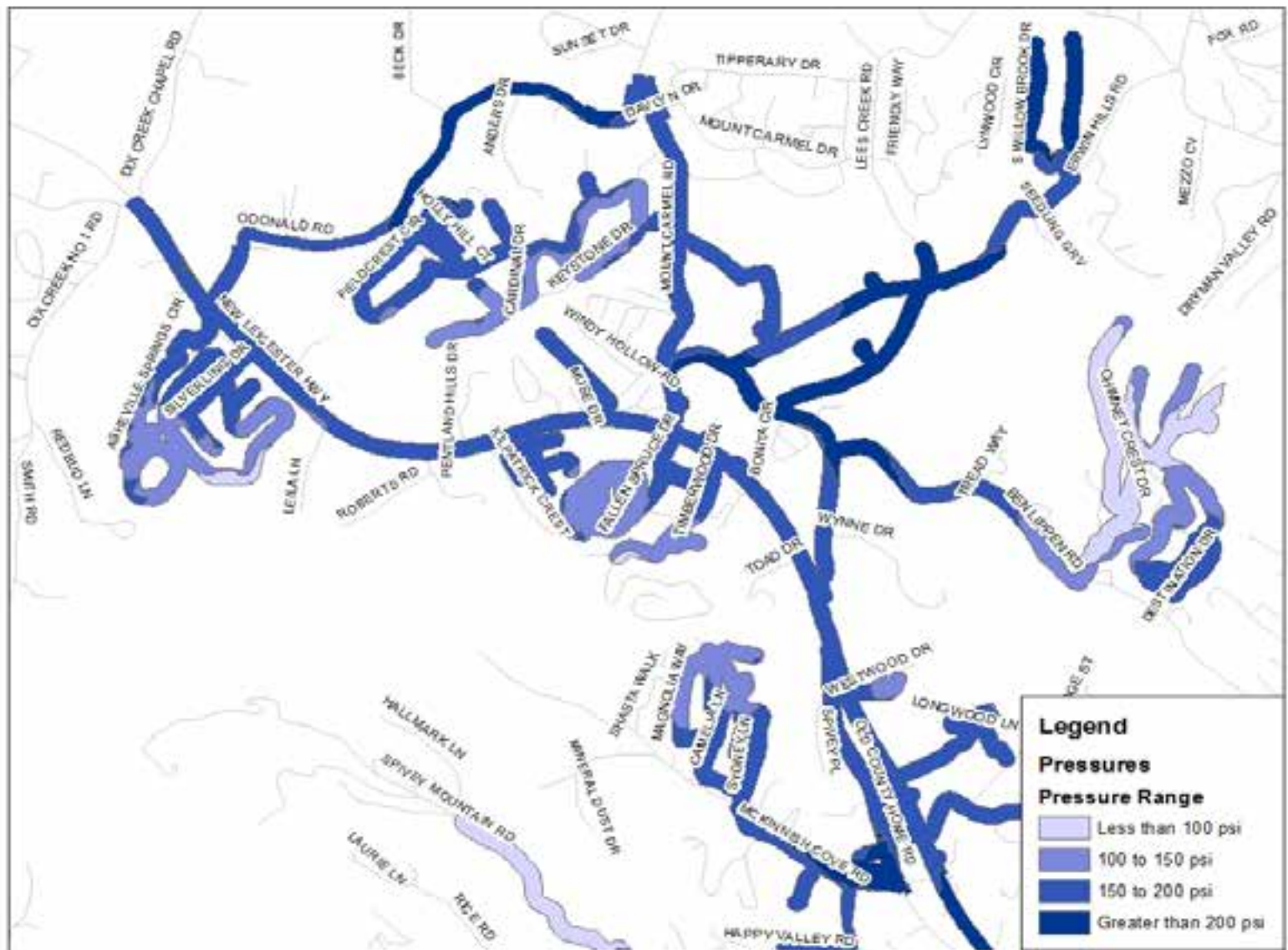
- Clipped the contour at the pressure zone boundary
- Features to Polygon tool
- Added a new field to the Pressure Zone and added Pressure Ranges

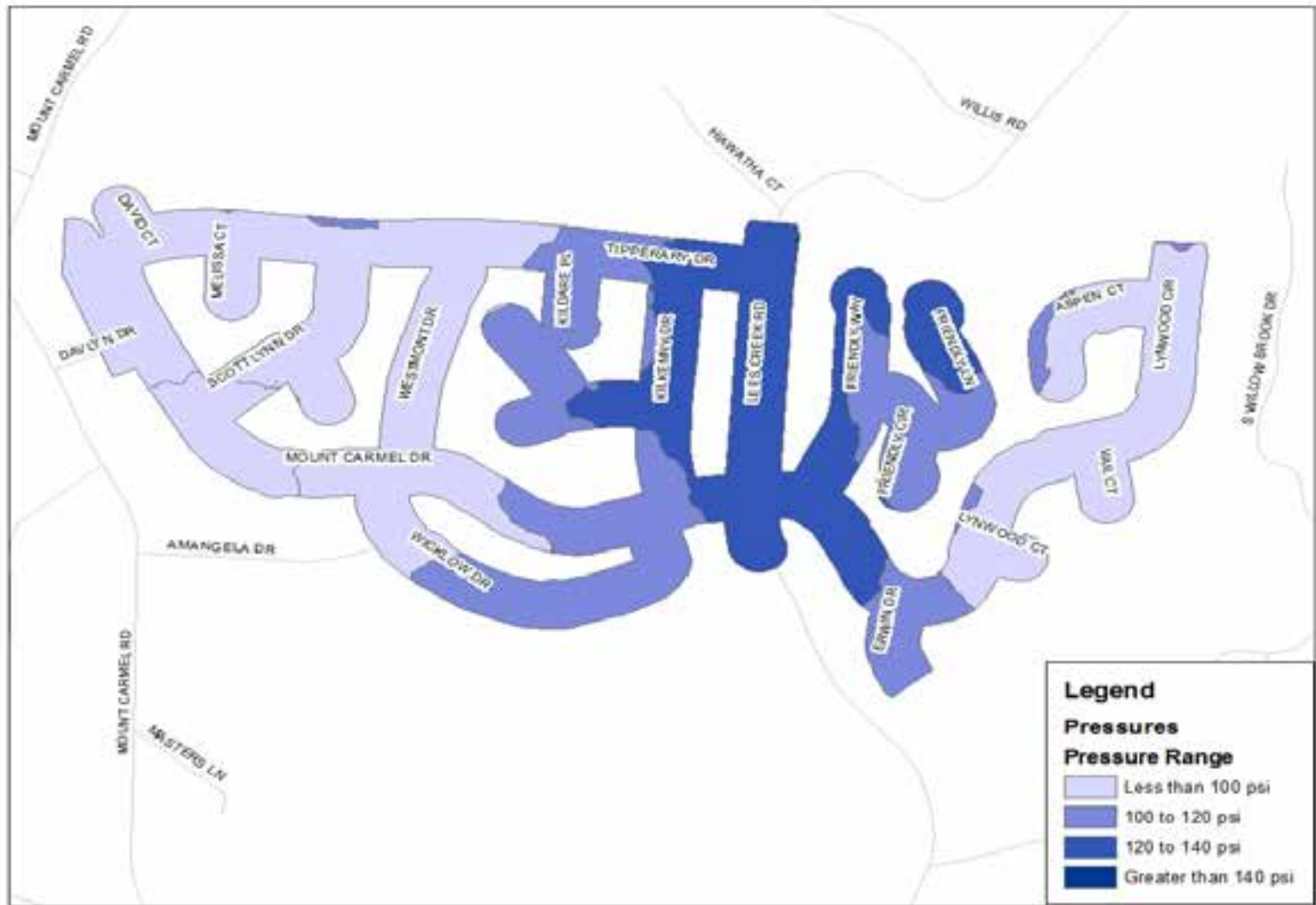












- Questions
- Comments