

# Using 3D GIS to Assist Executive Decision Making

Derek Hunt, SD1





- **Sanitation District of Northern Kentucky (SD1)**
  - **Has a service area that spans three counties.**
    - **Boone, Campbell, and Kenton Counties**
  - **Maintains approximately 1,600 miles of sanitary sewer pipe.**
    - **142 pump stations**
    - **15 flood control stations (Ohio and Licking Rivers)**

# Boone County Development

- **Large undeveloped tracts of land.**
  - Real estate development
  - Economic opportunity
  
- **Geographic, Financial, and other constraints**
  - Construction difficulties
  - SD1 budget
  - Geopolitical differences

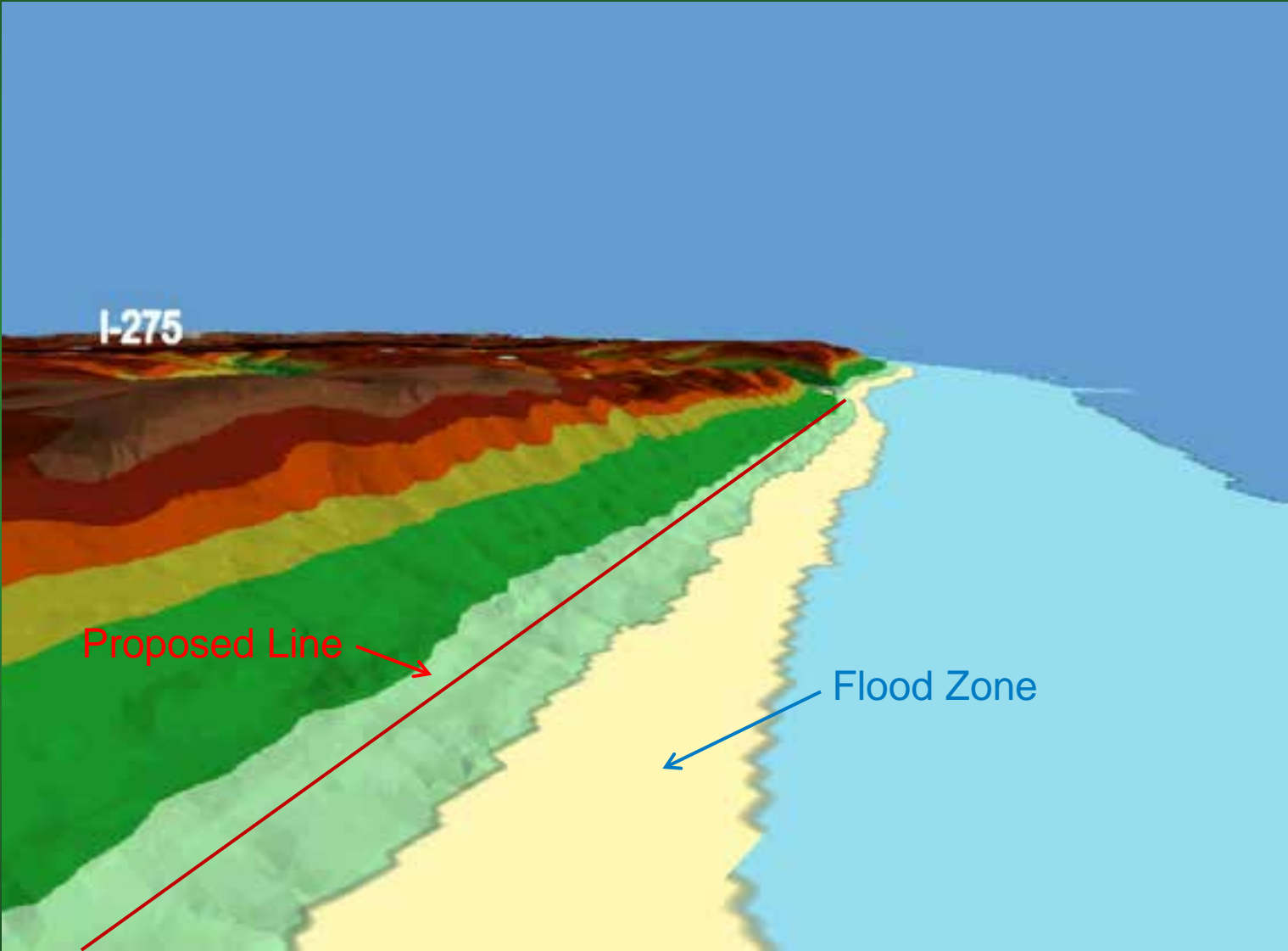
# ArcMap Study Area



# ArcMap Study Area, DTM



# ArcGlobe Terrain





# ArcGlobe Imagery Draped Terrain



# Terrain

ain.gdb

Copy Ctrl+C

Paste Ctrl+V

Delete

Rename F2

Refresh F5

Manage ▶

New ▶

Import ▶

Export ▶

Properties...

 Feature

 Relation

 Terrain

 Network

 Topology

 Parcel

 Geometry



# Creating a Terrain

- ✓ **ESRI's Terrain wizard makes creation simple.\***
  - ✓ **\*Once all of your data is organized correctly.**
- ✓ **The Terrain file sits in a feature dataset in a geodatabase.**
  - ✓ **Contributing Layers also reside here.**
- ✓ **Point File Information**
  - ✓ **Average point spacing must be known.**

# Creating a Terrain

- ✓ **Data Sources**

- ✓ Determine the roles for each feature class.

- ✓ **Pyramid Levels**

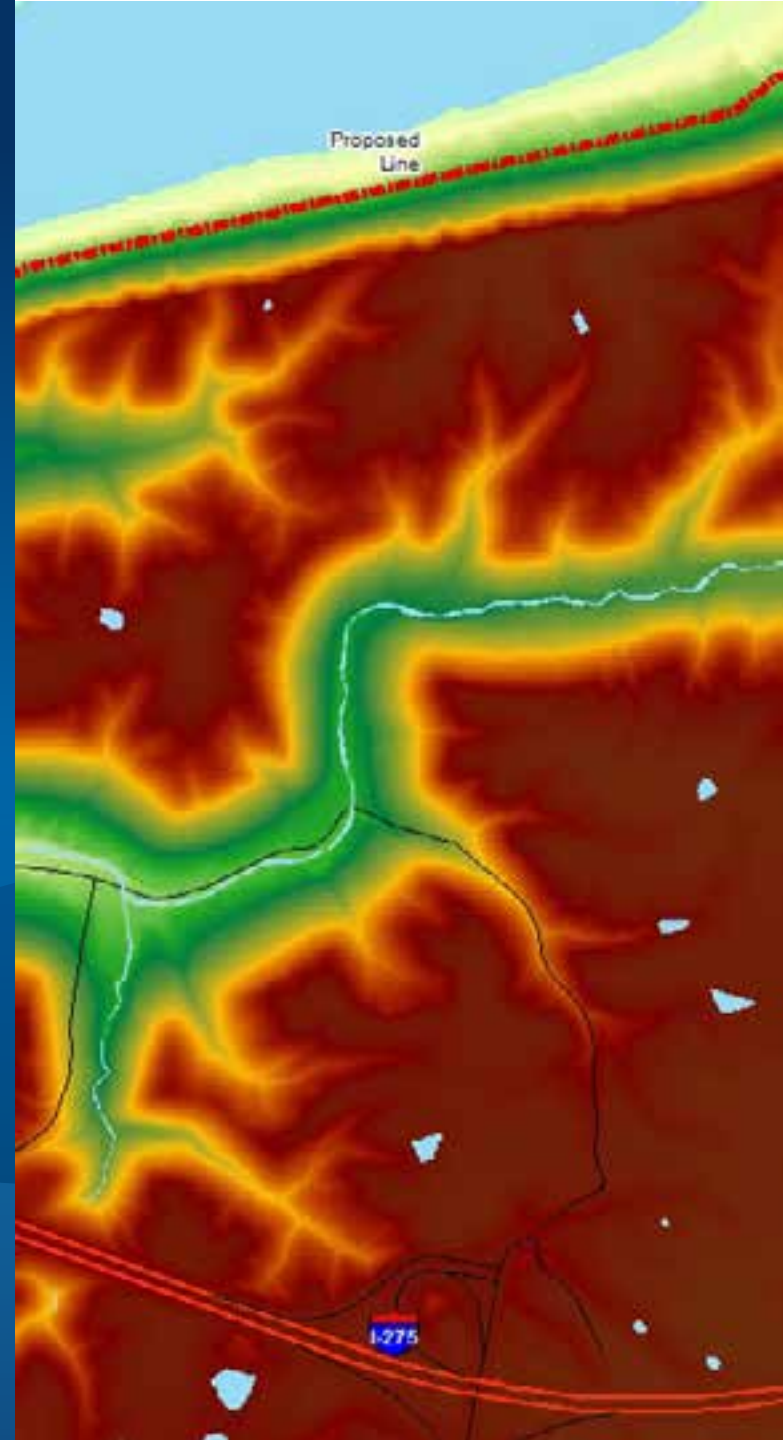
- ✓ Calculate Properties for default.

- ✓ **Review and Build.**

- ✓ Terrain completion.

Demo

# Flyover Videos





**Questions?**