

Using Location-Intelligent Search to Maintain Stormwater Assets



Elizabeth Young
Fort Worth

Brian Wienke
Accela

Agenda

- Fort Worth and Asset Management
- Integrating GIS with our Asset Management System
- Benefits of Integration
- Next Steps





Fort Worth is the 16th largest City in the US. From 2000-2006 we were the fastest growing large City in the US. Located in North Central Texas, the city is one of “America’s Most Livable Communities.”

- **POPULATION:** 780,000
- **GEOGRAPHY:** 350 square miles



Asset Management



When and Why?

City released **RFQ** for
Asset Inventory
Project

Asset Inventory
Project started

Asset Inventory
Project Completed



RFP for Work Order
Asset Management
System

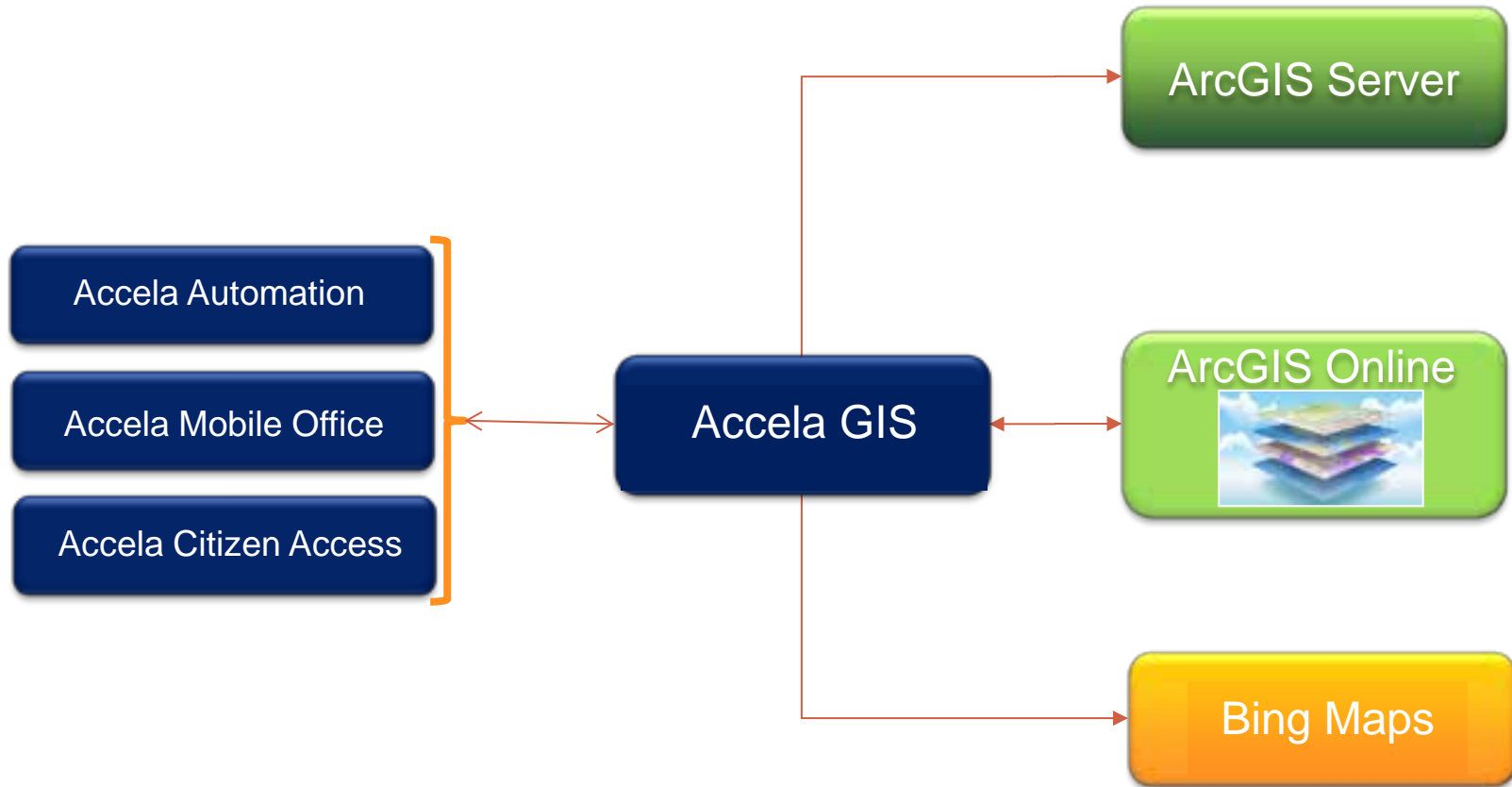
Began **Accela**
Asset Management
System
Implementation

Accela
Phase 1
Go-Live

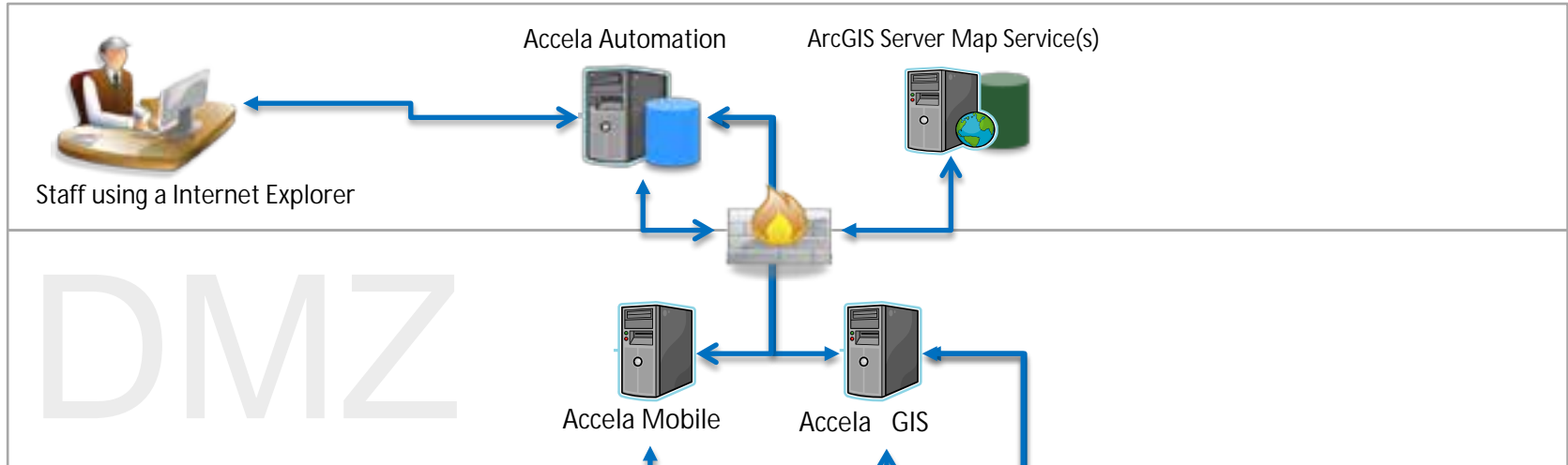
Accela
Phase 2
Go-Live



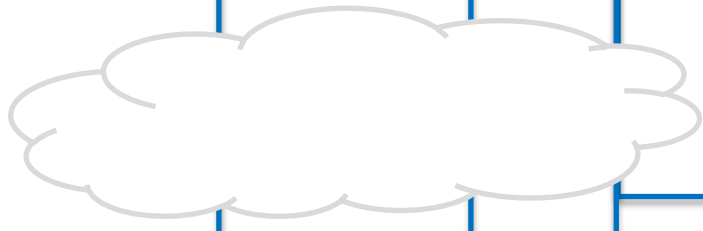
Integrating Accela & GIS



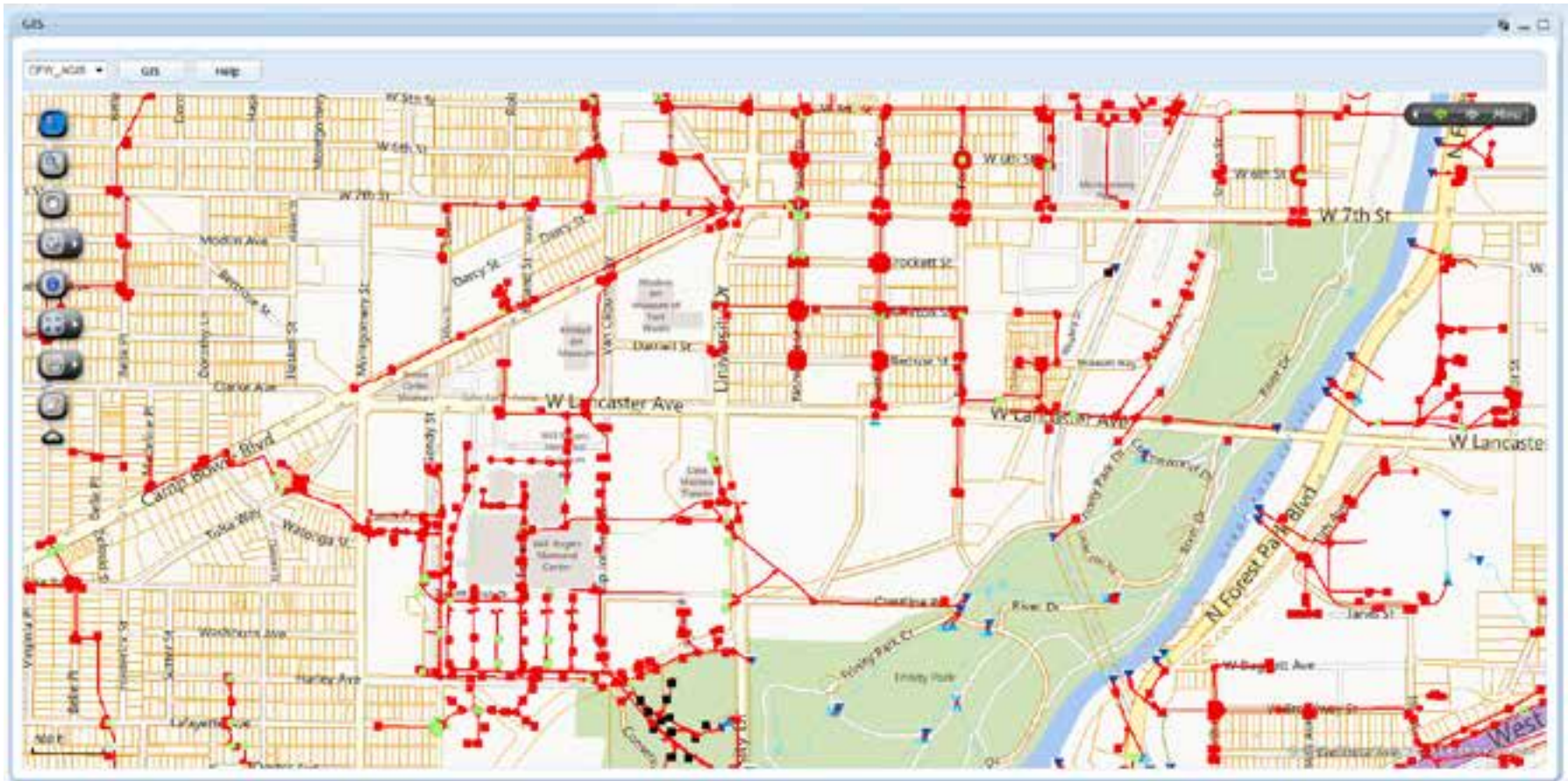
System Infrastructure



DMZ

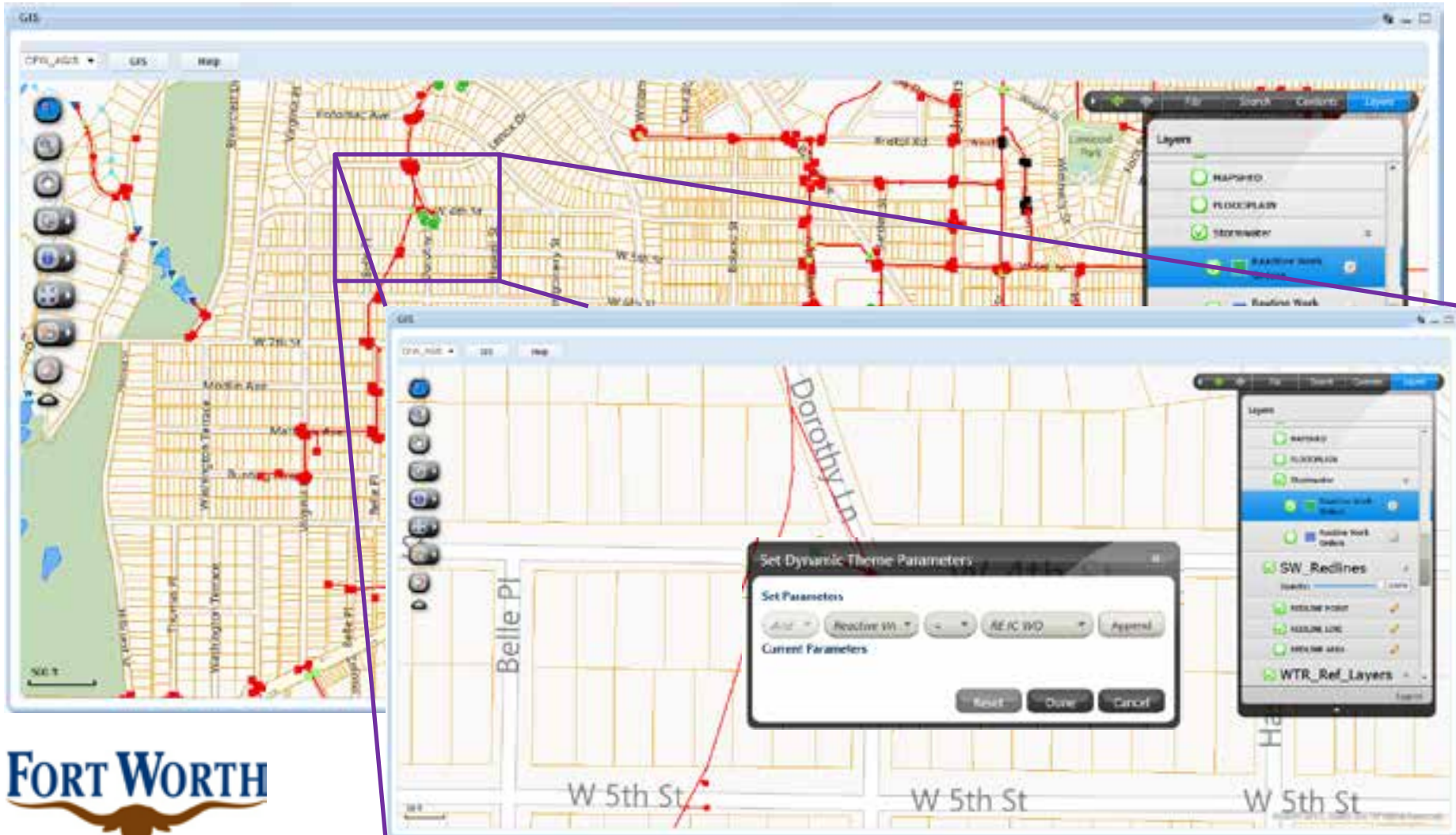


Integrating GIS and Accela



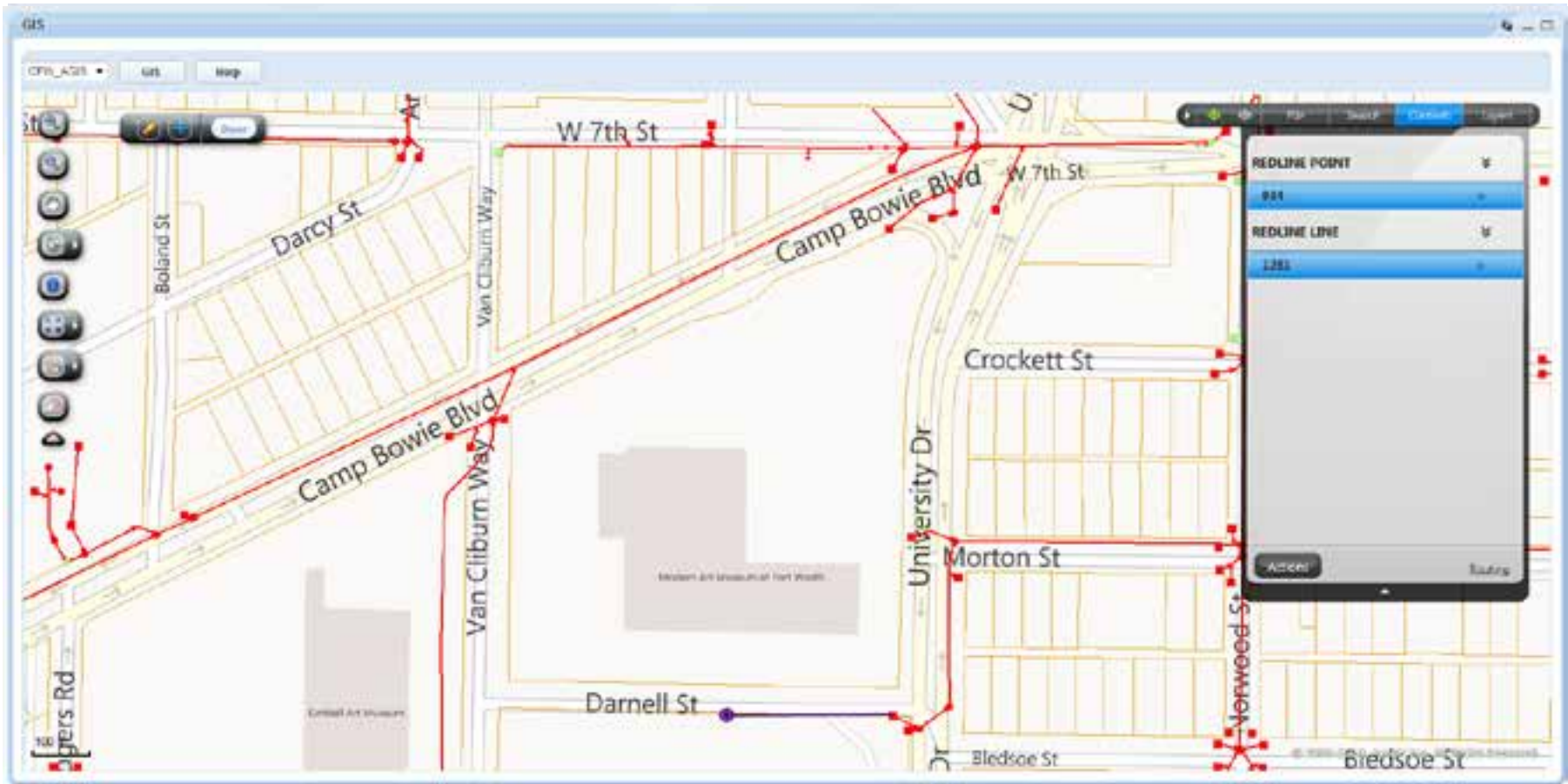
Integrating GIS and Accela

Dynamic Themes



Integrating GIS and Accela

Editing Capabilities



Integrating GIS and Accela

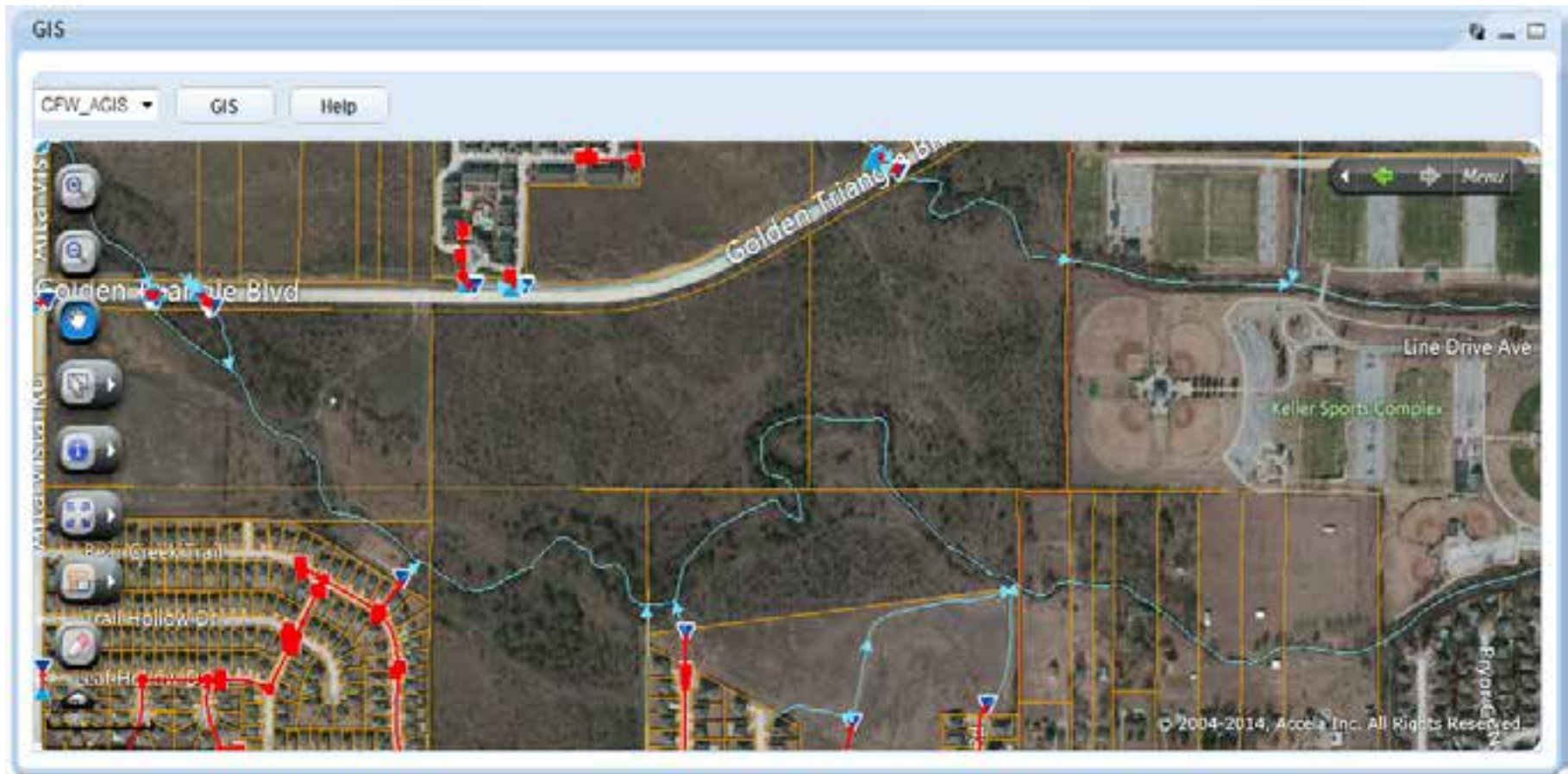
Nearby Functionality

The screenshot displays the Accela GIS interface. On the left, there is a 'My Navigation' sidebar with a tree view containing items like Record Summary, Report Detail, Summary Detail, Add Geos, Address, Assets, Documents, EIS Submittal, Related Records, Update All, Update All, and Update Workflow. Below it is a 'Reports' section with a tree view containing 'All Reports', 'Asset Standard Report', and 'Miscellaneous'. The main area is titled 'Work Orders' and features a table with columns: Record #, Record Type, Created Date, Priority, Status, Number, District, Street Name, Street Type, Assigned to Staff, Created By, Parent Record, Related Records, Active Task, and Return ID. A table row is highlighted with a blue background, showing Record # WFO 1454-0168, Record Type AMB Stormwater-Resilient Work Order-Chamber Work, Created Date 04/05/14, Priority Non-Emerg, Status Closed, Number 1454-0168, District DC, Street Name, Street Type, Assigned to Staff Dale Kutzma, Created By ACSM, Parent Record, Related Records, Active Task, and Return ID. Below the table, there is a 'Record ID: WFO 1454-0168' section with buttons for 'View', 'Print', 'Summary', and 'Help'. The 'Details' section shows fields for Record ID (WFO-1454-0168), Record Type (AMB Stormwater-Resilient Work Order-Chamber Work), Status (Closed), Priority (Non-Emergency), and F81 Schedule ID. A 'Detailed Description' field contains the text: 'Outlet filled with debris and vegetation. Needs to be clear for better drainage.' Below this is a 'check works' section. The 'ASSIGNMENTS AND UPDATES' section includes 'Scheduled Date' (04/05/14), 'Chamber Reported' (In Progress), 'Assigned to Department' (Current Department), 'Assigned to Staff' (Current User), 'Completed by Department' (Current Department), 'Completed by Staff' (Current User), and 'Closed Date' (04/05/14).

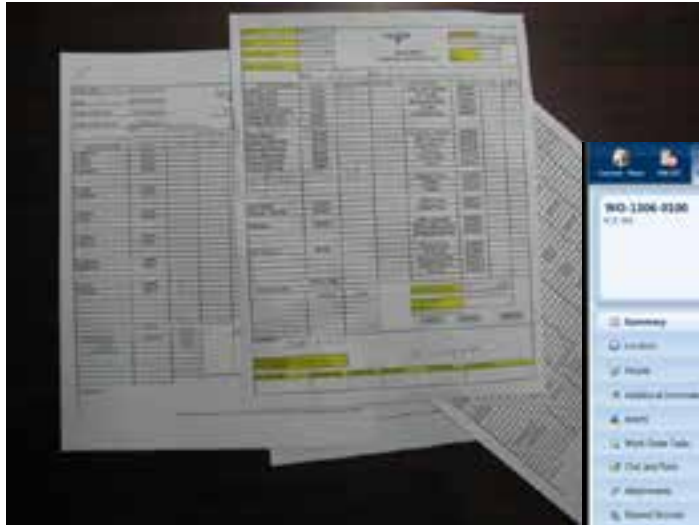


Integrating GIS with Accela

Addresses vs Assets



Integrating GIS and Accela *Mobile*



WO-1306-0100
KLS WO

Summary

Created by Administrator, Modified by Administrator, 8/17/2012 10:00 AM

Assigned To: [User]
Order Number: 8072002
Information: 8072002
Status: **CLOSED**

Map: [Map showing location]

Buttons: [Save], [Submit], [Cancel], [View Log]



WO-1306-0100
KLS WO

Assets

Asset ID	Type	ID	Name	Description	Material	Order	Size	Unit
8072002	Equipment	8072002			Asset	1		
8072002	Equipment	8072002			Asset	1		
8072002	Equipment	8072002			Asset	1		

Cost Items

Type	Cost ID	Cost Type	Cost Item	Quantity	Total Cost
8072002	70	Equipment	267-0109	50	\$51,5000
8072002	70	Lease	47604	0.5	\$80,0000
8072002	70	Lease	407222	4.5	\$112,5000
8072002	70	Accomplishment	Accomplishment	1	\$0,0000



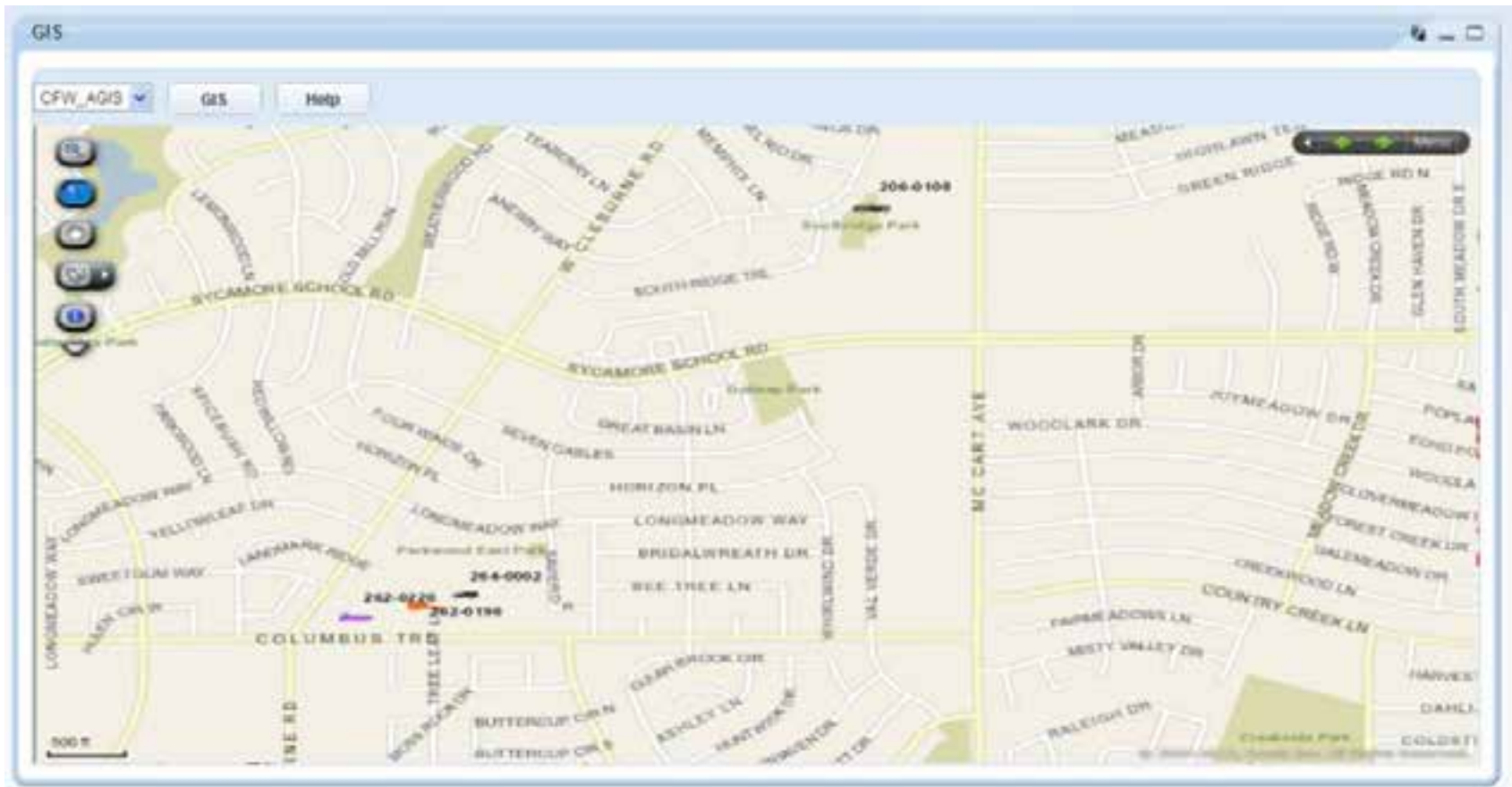
Overall Program Benefits

- Better Data Accuracy
- Only Backlog is work that needs to be done
- Data collected on SWM Assets vs Addresses
- New Data collected that previously was not
- Work Orders, GIS, and attached documents and images available to staff from the field



Looking Ahead

AVL Integration



Looking Ahead – Mobile Options

Mobile





Elizabeth Young

City of Fort Worth

IT Lead - GIS and Technology

Elizabeth.Young@fortworthtexas.gov

Brian Wienke

Accela

Principal Product Manager

bwienke@accela.com

