

Improving Wildland Conservation Management through ArcGIS Online

David Gimnich





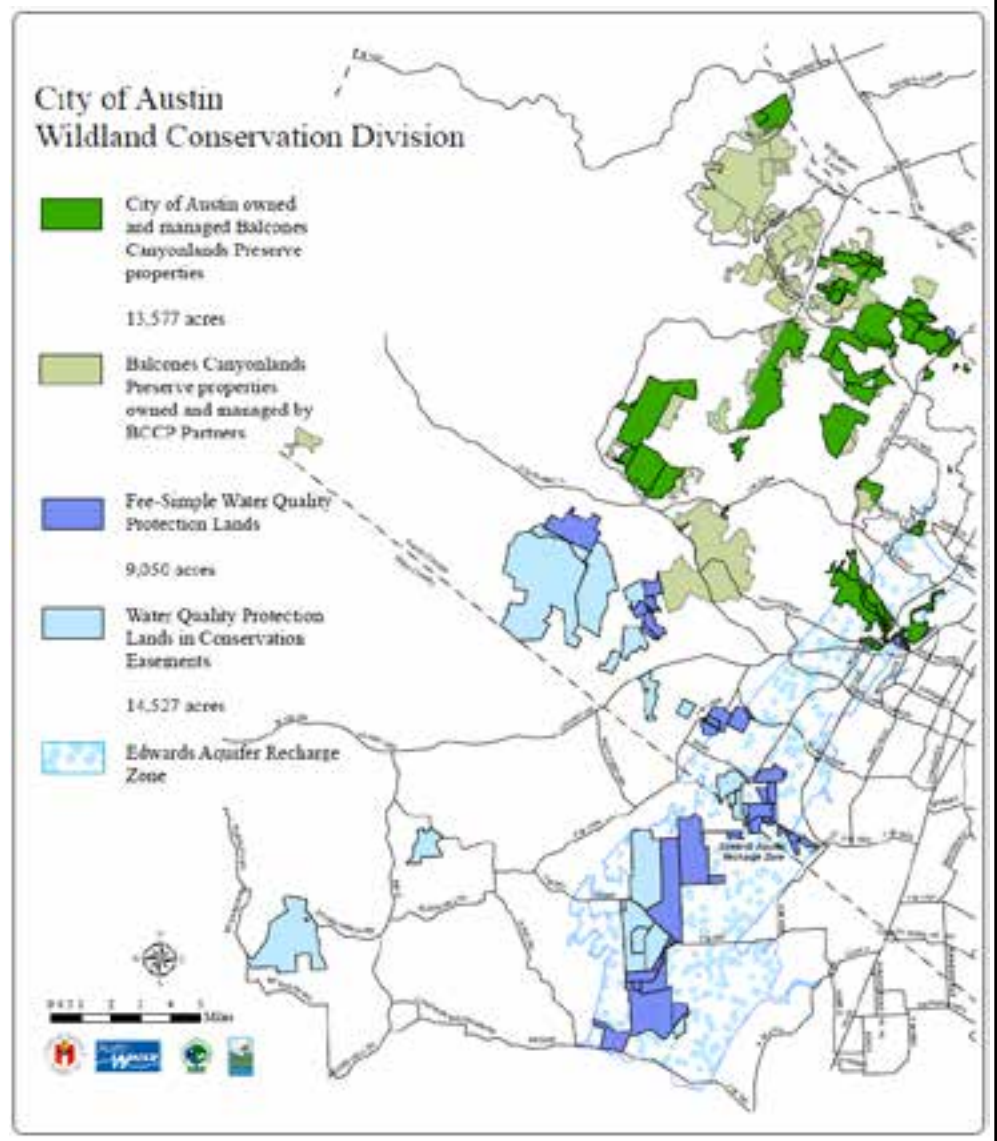
Geographic Information System Analyst

- **Biology**
- **Outreach and Volunteer Management**
- **Wildfire Prevention and Prescribed Burn**
- **Facility Building and Grounds**
- **GIS and Regulatory**



WCD

- 37,154 acres
- 3 counties
- 20 F.T.E.s
- 300 volunteers
- 2 additional F.T.E.s
- 30 data collectors



Data

Problem

ArcGIS Online

Solution

Data Problem

**Who - 20 full time staff, over 30
trained volunteers**

**What - Work orders, boundary issues,
invasive plant species...**

**Where - Wildlands with canopy cover
and poor cell phone reception**

**When - Work hours, nights, weekends,
vacations**

**Why - Protect sensitive features,
ensure safety and security**

**How - With cameras, GPS units,
data sheets (different models)**

ArcGIS Online

Solution

Solution

ArcGIS Online



- ESRI Collector App
- Domain driven data
- Cell + GPS location service
- Required training
- Defined accuracy required
- Smart Devices

ArcGIS Online

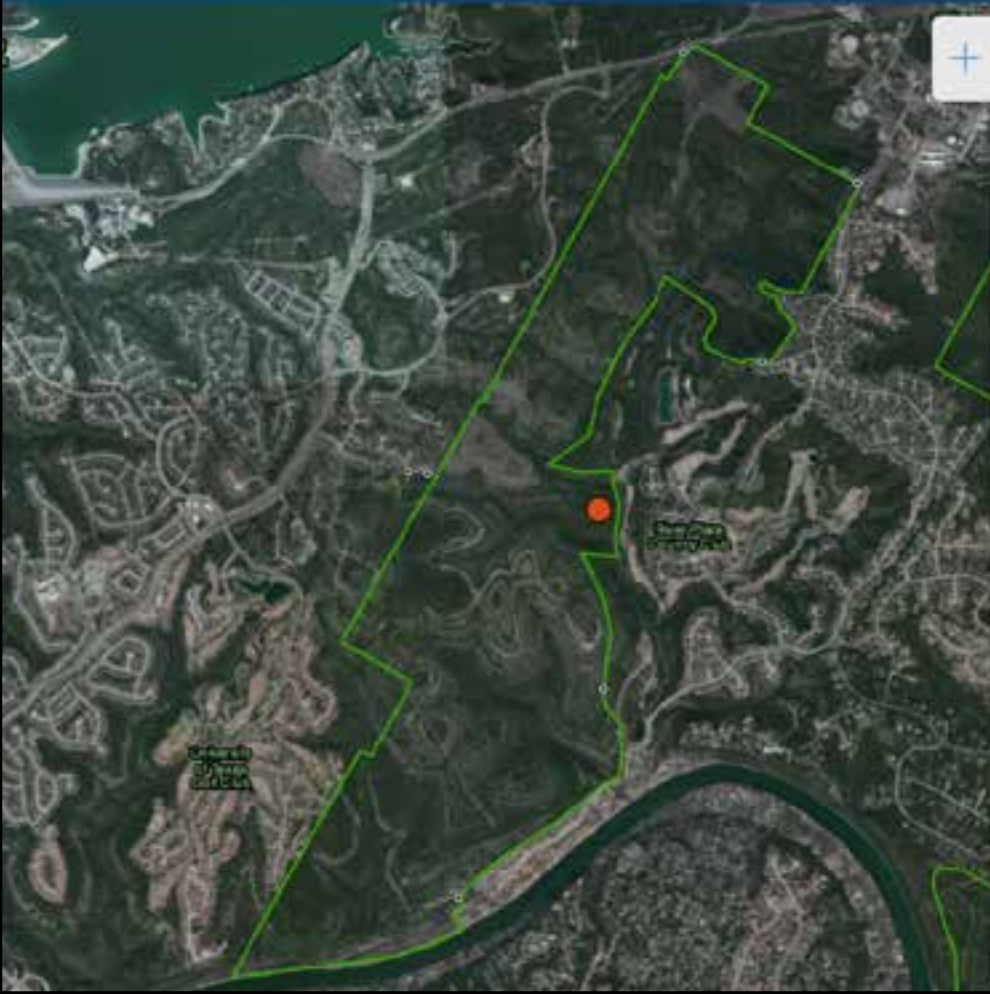
Scenario



W I L D L A N D
C O N S E R V A T I O N
D I V I S I O N







Location
Lat: 30.369829° Long: -97.967160°

Service Request

Project
Cut fence and trespassing

Program
BCP

Manage Unit
North Lake Austin

Date Entered
April 8, 2014

Entered By
GimmichD

Date Completed

Completed By

Comments
Private individual cut our fence and installed a gate. Landscaper was caught trespassing through the gate with a weed wacker.

Cancel



Submit

Done

Attachments



Add

Location
Lat: 30.319829° Long: -97.807160°

Service Request

... and trespassing

... ke Austin

... 2014

D

... ated

By

... ndividual cut our fence
... lled a gate. Landscaper
... ght trespassing through
... with a weed wacker.



Service Request
Cut fence and trespassing

Location
Lat: 30.36829° Long: -97.867160°

Cut fence and trespassing

Program
BCP

Manage Unit
North Lake Austin

Date Entered
April 8, 2014

Entered By
GimnichD

Date Completed

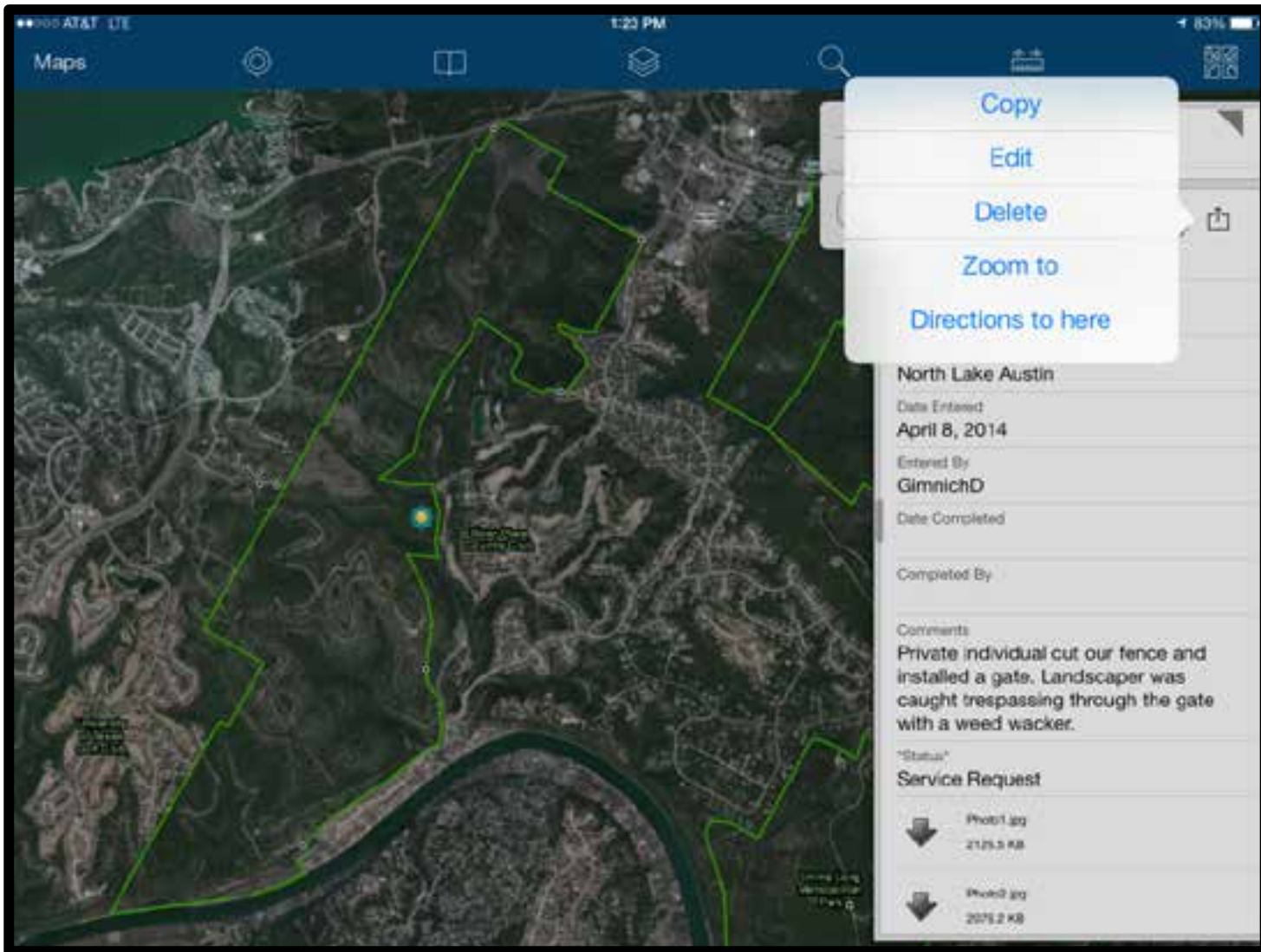
Completed By

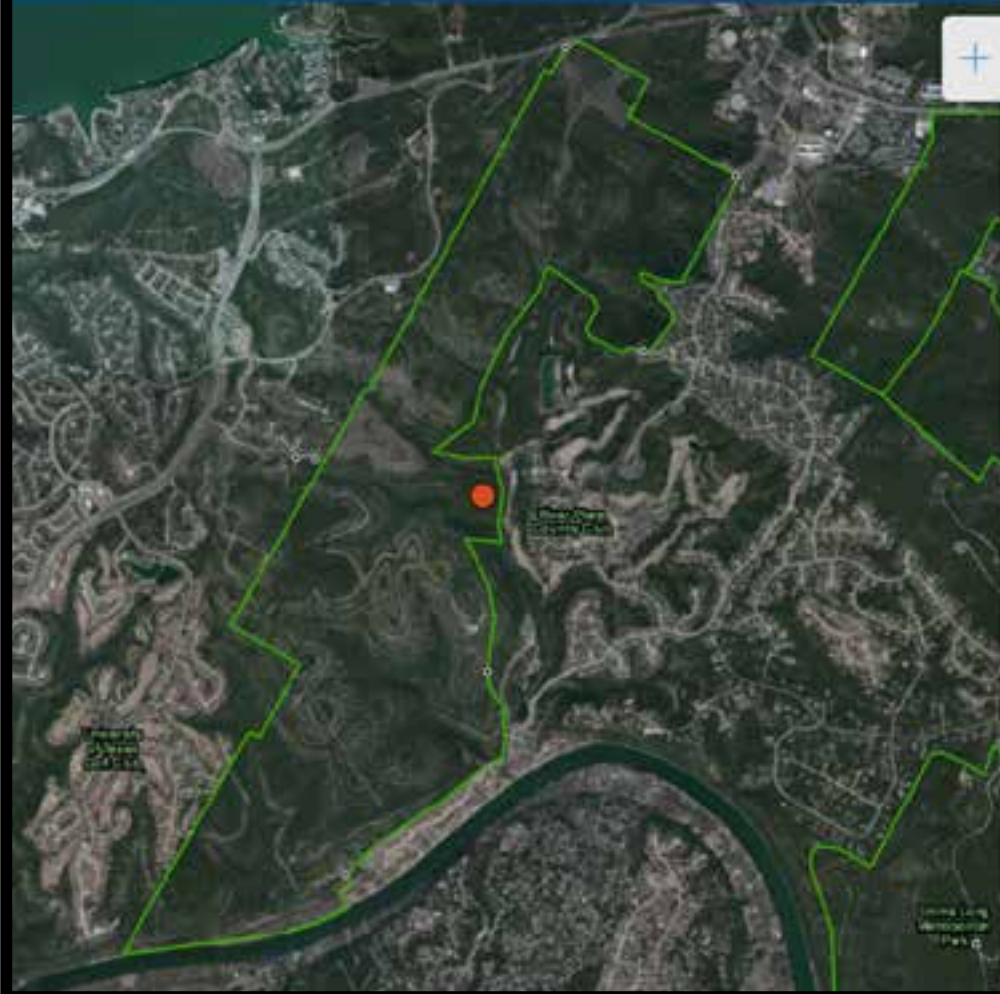
Comments
Private individual cut our fence and installed a gate. Landscaper was caught trespassing through the gate with a weed wacker.

"Status"
Service Request

Photo1.jpg
2129.5 KB

Photo2.jpg
2076.2 KB





Location
Lat: 30.369829° Long: -97.667160°

BCP

Manage Unit
North Lake Austin

Date Entered
April 8, 2014

Entered By
GinnichD

Date Completed

Completed By

"Safety"
JSA / PPE Needed

"Equipment Required"
Hand Tools

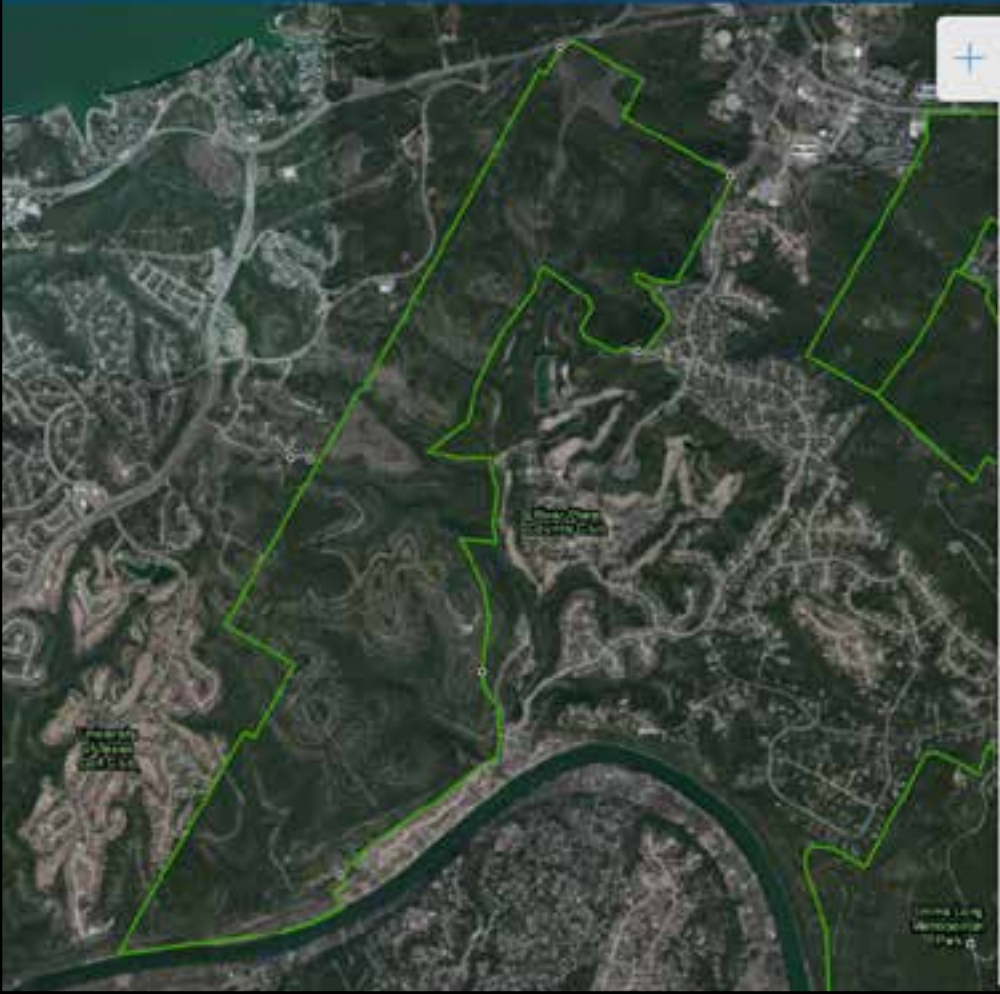
Comments
Private individual cut our fence and installed a gate. Landscaper was caught trespassing through the gate with a weed wacker.

"Status"
Open - Work Order

"Assigned To"
Facility Work Group

"Complexity"
Solo-Staff

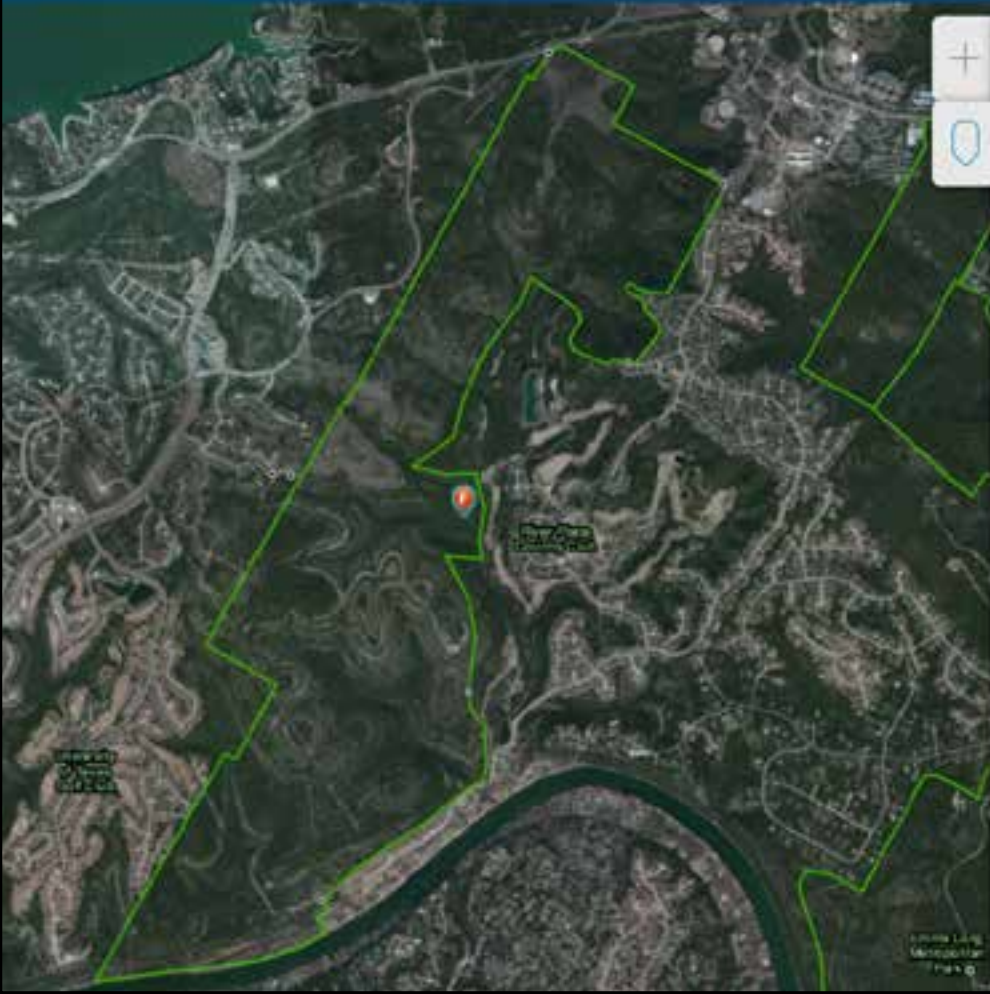
"Priority"
1 - High



+ Collect a new feature

Project_Tracker

Project_Tracker



Work Order: Cut fence and trespassing
Cut fence and trespassing

Location
Lat: 30.369529° Long: -97.867167°

Completed By

Comments
Private individual cut our fence and installed a gate. Landscaper was caught trespassing through the gate with a weed wacker.

"Status"
Open - Work Order

"Safety"
JSA / PPE Needed

"Equipment Required"
Hand Tools

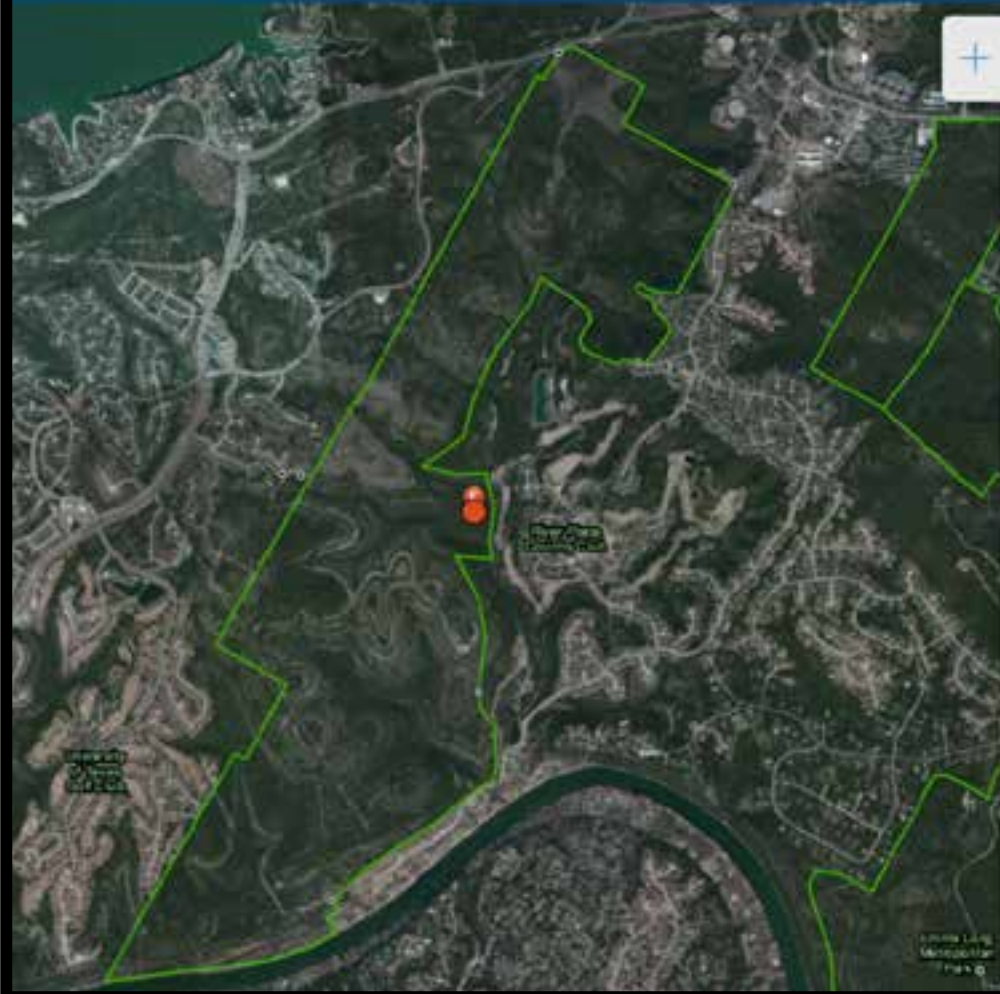
"Assigned To"
Facility Work Group

"Complexity"
Solo-Staff

"Priority"
1 - High

Photo1.jpg
3126.5 KB

Photo2.jpg
2076.2 KB



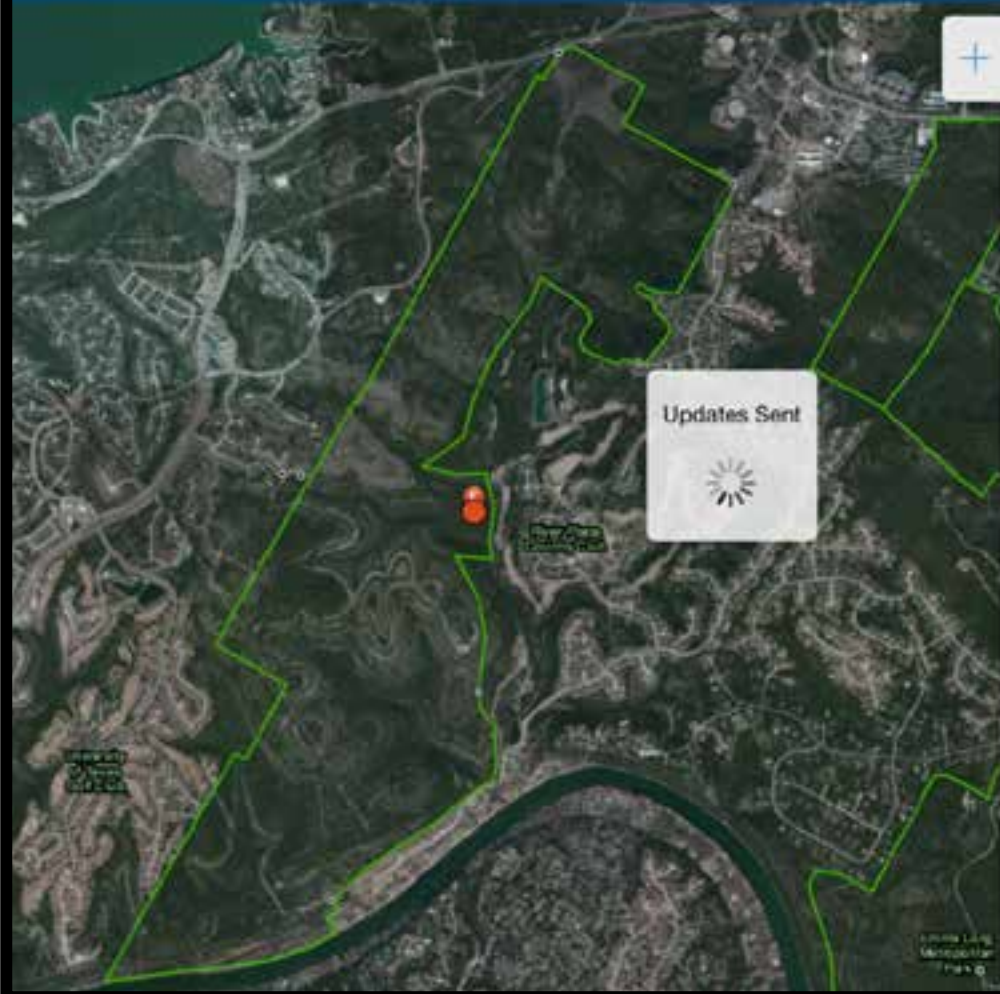
Location
Lat: 30.369829° Long: -97.567160°

Work Order: Cut fence and trespassing

Date Completed >

Completed By >

Comments
Private individual cut our fence and installed a gate. Landscaper was caught trespassing through the gate with a weed wacker. >



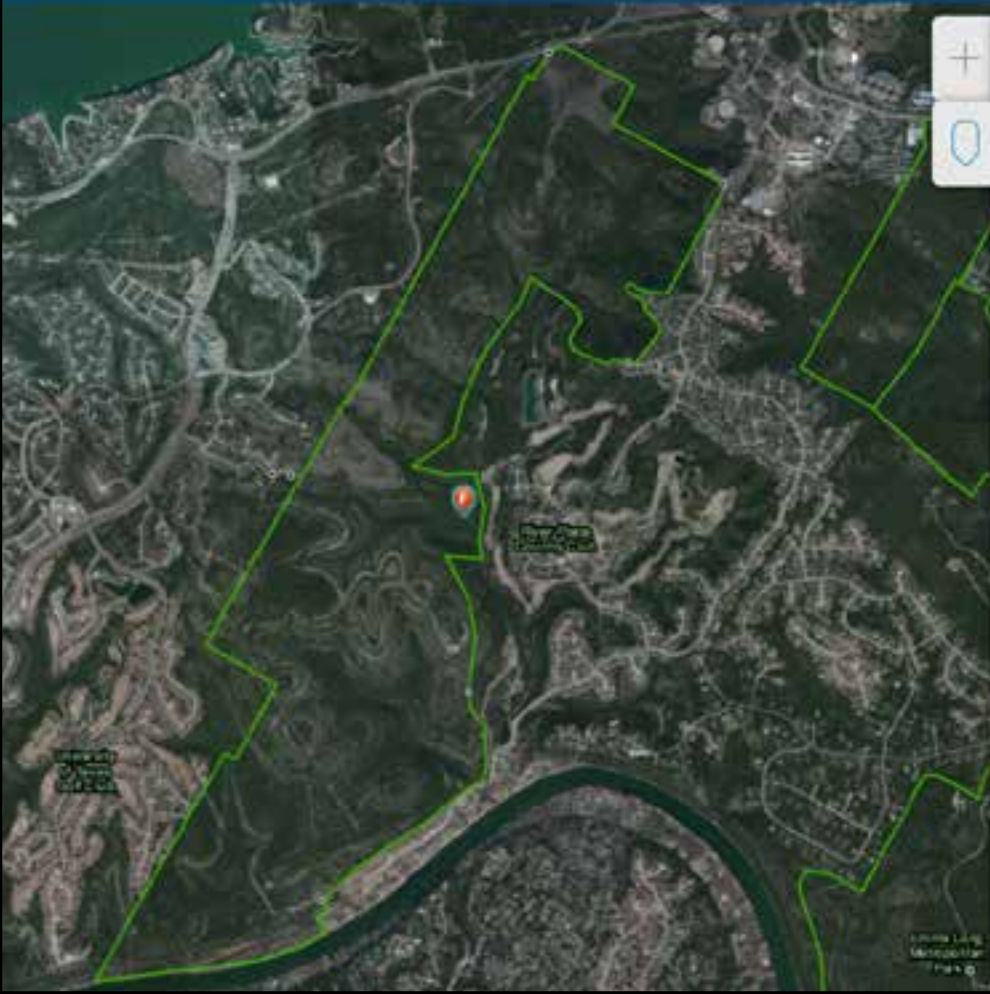
Location
Lat: 30.369829° Long: -97.567160°

Work Order: Cut fence and trespassing

Date Completed
April 10, 2014

Completed By
DenhamH

Comments
Private individual cut our fence and installed a gate. Landscaper was caught trespassing through the gate with a weed wacker.



Work Order: Cut fence and trespassing
Cut fence and trespassing

Location
Lat: 30.369829° Long: -97.867160°

Cut fence and trespassing

Program
BCP

Manage Unit
North Lake Austin

Date Entered
April 8, 2014

Entered By
GimnichD

Date Completed
April 10, 2014

Completed By
DenhamH

Comments
Private individual cut our fence and installed a gate. Landscaper was caught trespassing through the gate with a weed wacker.

Status
Open - Work Order

Safety
JSA / PPE Needed

Equipment Required
Hand Tools

Assigned To

ArcGIS Online

- **Standards**
- **Efficiency**
- **Accurate**
- **Productivity**
- **Reliable**
- **Accessibility**

Acknowledgements

William Conrad - BCCP Secretary &
COA Environmental Policy Program
Manager

Amanda Ross - COA Environmental
Program Coordinator for Outreach and
Education

Louise Liller - COA Environmental
Conservation Information Specialist

Kimberlee Harvey - COA
Environmental Program Coordinator





Any
Questions?

Golden-cheeked warbler fledglings taking a bath

Photo by: John Ingram