

# Story Maps Enhance City's Website Redesign Project

Leilani Flores Emnace

Bonnie Shrewsbury



# Welcome

Leilani Emnace

Information Systems Manager

[lemnace@citymb.info](mailto:lemnace@citymb.info)

(310) 802-5571



# City of Manhattan Beach, CA

- **Four square miles**
- **Two miles borders beach**
- **Manhattan Beach Open Volleyball Tournament**
- **Affluent community**
- **Boutique hotels and shops**
- **Fine dining**

# City's Website Redesign

- **City Council Strategic Plan Initiative**
- **Information Systems Master Plan  
GIS Enhancements**
- **Information Systems applies  
Enterprise GIS**
- **Highlights existing information**
- **No cost to the City**

# www.citymb.info

The screenshot shows the homepage of the City of Manhattan Beach website. At the top, there is a navigation bar with links for News, Calendar, FAQs, Jobs, and Agendas & Minutes. The main header features the city name "CITY OF MANHATTAN BEACH" and a search bar. Below the header is a teal navigation menu with options: HOME, CITY SERVICES, CITY OFFICIALS, RESIDENTS, BUSINESSES, VISITORS, and I WANT TO... A large banner image of a coastal garden is featured, with a sub-header "MANHATTAN BEACH STORY MAPS" and a description: "Web maps combined with text, multimedia, and interactive functions". To the right of the banner is a vertical list of services: eNEWS SIGN UP, SERVICE REQUESTS, ACTIVITY REGISTRATION, ONLINE PAYMENTS, and PERMITS & LICENSES. Below the banner are three main content sections: "CURRENT NEWS" with a headline "Caltrans Repaving Project on Sepulveda Boulevard", "EVENTS MEETINGS" with a sub-header "Adjourned Regular City Council Meeting", and "CONNECT WITH US" with social media icons for Facebook, YouTube, and Twitter. At the bottom right, there are links for "MB FORUM" and "STRATEGIC PLAN".



Finance

Pay Parking Tickets

Pay Water Bills

Revenue Services

City Treasurer

Finance Subcommittee

Budget and Accounting

Information Systems

Information Systems Master Plan

WiFi Warning, Disclaimer and Terms

GIS Program

Map Gallery

Interactive Mapping

Story Maps

GIS Links

Map Gallery

Purchasing

Contact Finance

FAQ

City Services » Finance » Information Systems » GIS Program

## STORY MAPS

Story Maps are intelligent web maps combined with text, multimedia, and interactive functions that are used to inform and educate. Please enjoy the City of Manhattan Beach's variety of Story Maps.

### City Facilities Map Tour



### Parks & Recreation Map Tour



### Public Art Map Tour



### Sustainable Living Map Tour



### Parking Lots Map Tour



# How to Create a Story Map

- **Tools**
  - **ArcGIS Online**
  - **Microsoft Excel (for CSV file)**
- **Story Map Content (involves departmental collaboration)**
  - **Name**
  - **Caption (description)**
  - **Location (longitude and latitude)**
  - **Photo URL**

# CSV File

Number	Name	Caption	icon_color	Long	Lat	URL
1	Manhattan Beach Pier	The Manhattan Beach Pier is located at the end of Manhattan Beach Boulevard. It is 928 feet long and houses the Roundhouse Marine Studies Lab and Aquarium </i><a href="http://www.roundhouseaquarium.org" style="color:yellow" target="_blank">(More Info)</a> in the octagonal building at the end. The pier is popular with locals, tourists, photographers, artists and the surfers who can be seen in the waves below.	B	-118.41	33.8843	<a href="https://dwhgpa.dm2301.livefilestore.com/y2pSDXAgjWh-Ij08Anf-qlza0G42felnkHDMVAVpky9-VDDY657TGD-PY6SPmC4IdhPYfyFhvFzb13iK6AB6HC43zdvaei70m5u3xl6s1iw/mB%20pEr%20beach%20lane%202.jpg?csid=1">https://dwhgpa.dm2301.livefilestore.com/y2pSDXAgjWh-Ij08Anf-qlza0G42felnkHDMVAVpky9-VDDY657TGD-PY6SPmC4IdhPYfyFhvFzb13iK6AB6HC43zdvaei70m5u3xl6s1iw/mB%20pEr%20beach%20lane%202.jpg?csid=1</a>
2	City Hall	City Hall is Manhattan Beach's main government building. It is home to the departments of Finance, Community Development, Parks and Recreation, Human Resources, and the offices and staff of the City Manager, City Clerk, and City Attorney, along with the Council Chambers. </i><a href="https://www.citymb.info/" style="color:yellow" target="_blank">More Info</a>	B	-118.41	33.8874	<a href="https://dwhgpa.dm1.livefilestore.com/y2a8Y1-GeUOI DGZ0L8XKwue5LDtstms5RpeN-PWmx8P1MmrISKV_rCn2-GDyaMa8Mn0s19TKAsR3abrlicPP1YG-Nr28WGGDn7oXQa05x52MQc/CityHall1.jpg?csid=1">https://dwhgpa.dm1.livefilestore.com/y2a8Y1-GeUOI DGZ0L8XKwue5LDtstms5RpeN-PWmx8P1MmrISKV_rCn2-GDyaMa8Mn0s19TKAsR3abrlicPP1YG-Nr28WGGDn7oXQa05x52MQc/CityHall1.jpg?csid=1</a>
3	County Library	The Manhattan Beach Library is a branch of the Los Angeles County Library System. It is currently under construction, with the new Library scheduled to open in June 2015. </i><a href="http://www.citymb.info/city-officials/public-works/new-manhattan-beach-library-project" style="color:yellow" target="_blank">More Info</a>	B	-118.41	33.887	<a href="https://dwhgpa.dm1.livefilestore.com/y2a2pe1t5Nfb4ncbu2o3CMh9YL-p84YGCfOLhDXLW18HcinTnA1Z5cmYg-vrbkE16MbensejOrCofcPXL15m5gcj0j-rKILPo55NpdxwBhty7rl9mq/NewLibrary.jpg?mi4=1">https://dwhgpa.dm1.livefilestore.com/y2a2pe1t5Nfb4ncbu2o3CMh9YL-p84YGCfOLhDXLW18HcinTnA1Z5cmYg-vrbkE16MbensejOrCofcPXL15m5gcj0j-rKILPo55NpdxwBhty7rl9mq/NewLibrary.jpg?mi4=1</a>
4	Police and Fire Safety Facility	The state-of-the-art Police and Fire Safety Facility is headquarters to the Manhattan Beach Police and Fire Departments. It houses the latest in public	B	-118.41	33.8974	<a href="https://dwhgpa.dm1.livefilestore.com/y2a8Y1-GeUOI DGZ0L8XKwue5LDtstms5RpeN-PWmx8P1MmrISKV_rCn2-GDyaMa8Mn0s19TKAsR3abrlicPP1YG-Nr28WGGDn7oXQa05x52MQc/CityHall1.jpg?csid=1">https://dwhgpa.dm1.livefilestore.com/y2a8Y1-GeUOI DGZ0L8XKwue5LDtstms5RpeN-PWmx8P1MmrISKV_rCn2-GDyaMa8Mn0s19TKAsR3abrlicPP1YG-Nr28WGGDn7oXQa05x52MQc/CityHall1.jpg?csid=1</a>



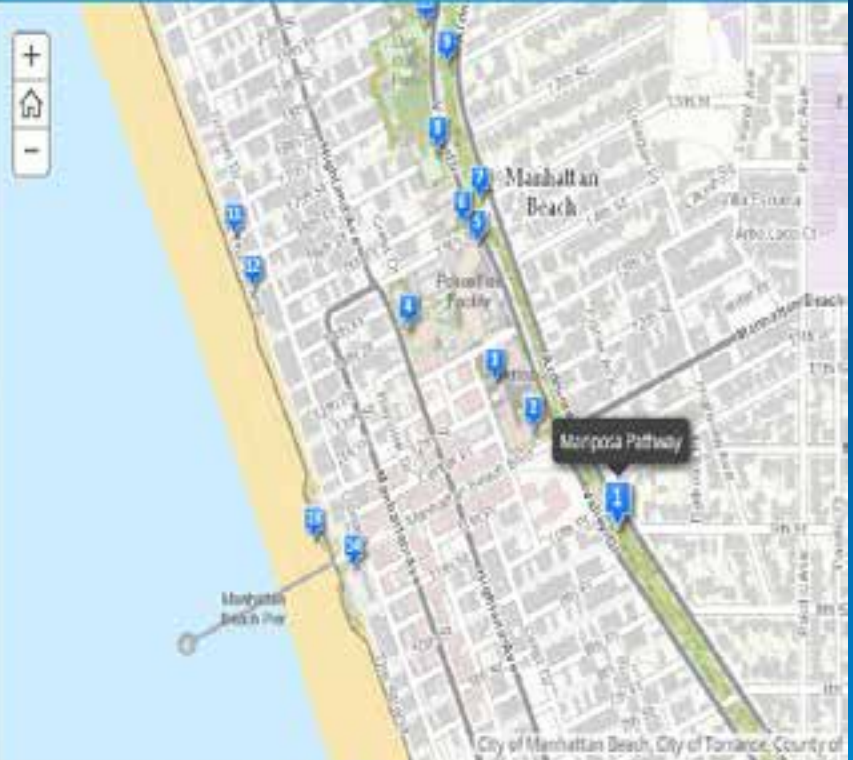
## Public Art in Manhattan Beach

Enjoy a virtual walk through the many artistic treasures found in the City of Manhattan Beach. The goal of our Cultural Arts Commission's "Art in Public Places" program is to offer a variety of artwork at different sites throughout the City. Discover various sculptures, mosaics, memorials and even a time capsule! [More Info](#)



### Mariposa Pathway

The Mariposa Pathway takes visitors along a wooded trail featuring seven stainless-steel butterfly totem poles, illustrating the stages of its life. The exhibit was commissioned by former Councilman Jason Lane, in memory of his wife, who died of cancer, and was created by Encinitas-based artist Christine Galman in 1992.



Mariposa Pathway



Red Dog



Metros Plaza Fountain



Castle of the Fossil Dunes



September 11th Memorial



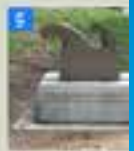
Manhattan's Struggle for  
Eternal Peace



Veterans Memorial



How Soon Hath Time...



Wave of the Future  
(Capitol)

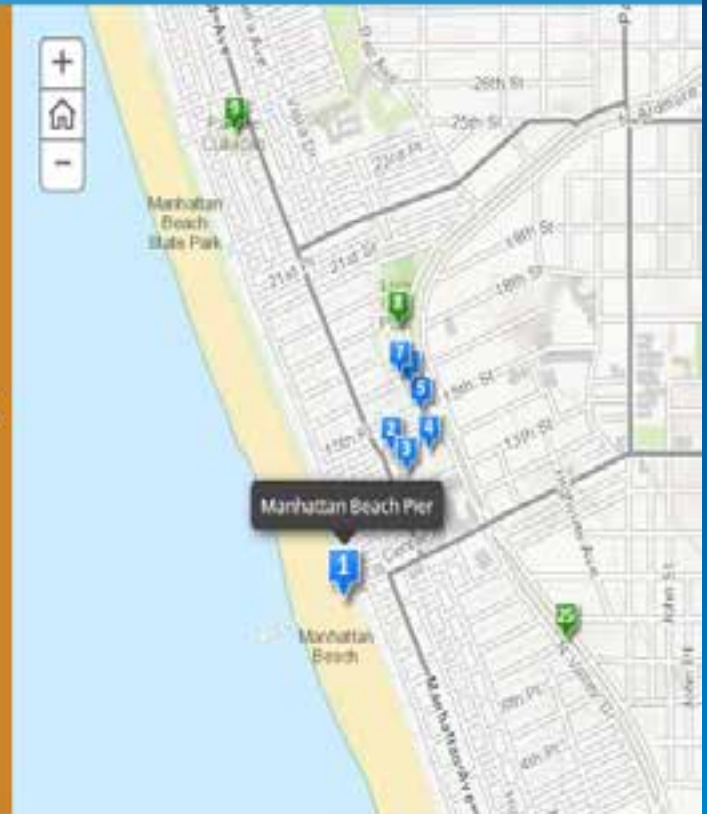
## Manhattan Beach City Facilities

It takes many different facilities to keep a city functioning well. Please enjoy this Map Tour through the City of Manhattan Beach's facilities, including City Hall, Police and Fire stations, our many beaches, even our County Library. [More Info](#)



### Manhattan Beach Pier

The Manhattan Beach Pier is located at the end of Manhattan Beach Boulevard. It is 928 feet long and houses the Roundhouse Marine Studies Lab and Aquarium [More Info](#) in the octagonal building at the end. The pier is popular with locals, tourists, photographers, artists and the surfers who can be seen in the waves below.



Manhattan Beach Pier



City Hall



County Library



Police and Fire Safety Facility



Post Office and Chamber of Commerce



Joslyn Community Center



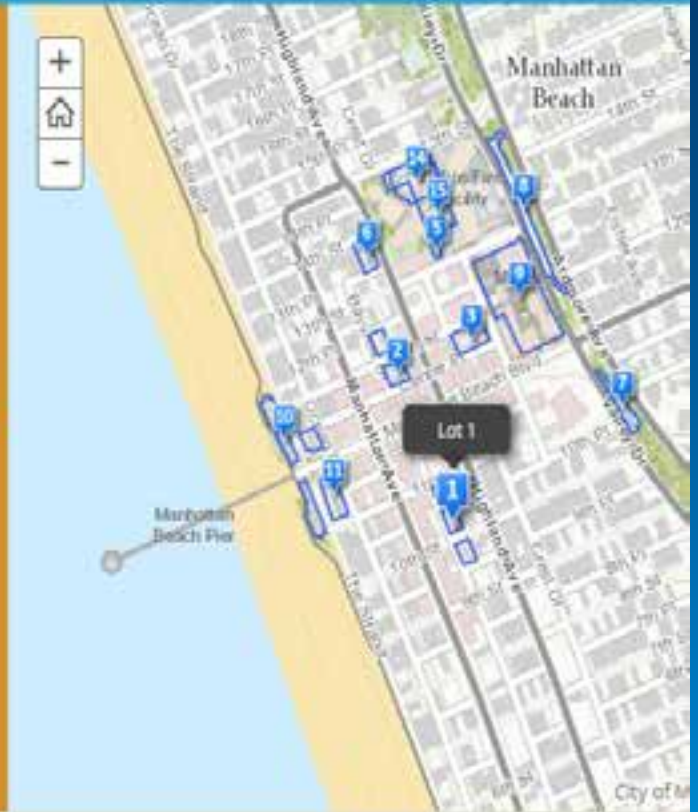
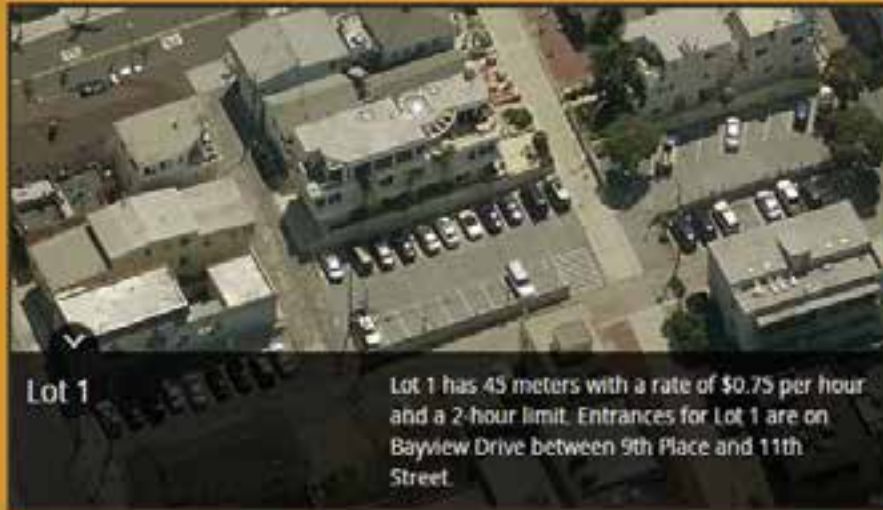
Scout House



## Public Parking Lots

Find the best place to park in one of the City's 12 parking lots, including over 1,400 spaces citywide. In addition to the parking lots, there are over 400 City street meters in the Downtown and North Beach areas.

[More Info](#)



Lot 1



Lot 2



Lot 3



Lot 4



Civic Center South



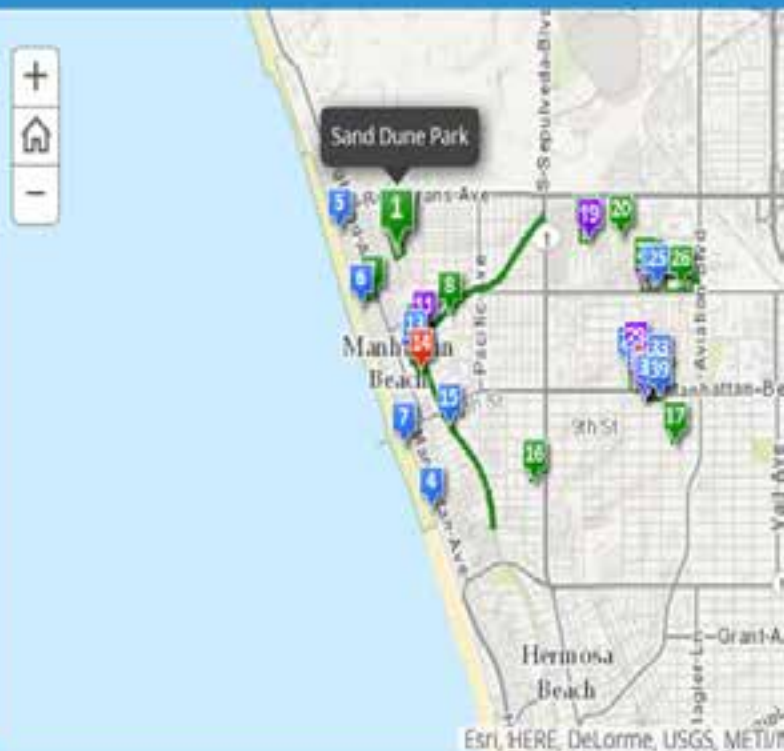
Lot 6



Lot 7

## Parks and Recreation in Manhattan Beach

The Parks and Recreation Department provides an array of facilities, including parks, athletic fields, tennis, paddle tennis, volleyball and basketball courts, par courses, jogging and bike paths, a nine-hole golf course, a swimming pool and dozens of sports programs and fitness classes. Also located within the city is a two-mile walking and jogging path that runs parallel to a bike path along the beach. [More Info](#)



Sand Dune Park



Sand Dune Park Playground



Bruce's Beach



Bike Path



The Strand



Strand Parcourse



Volleyball

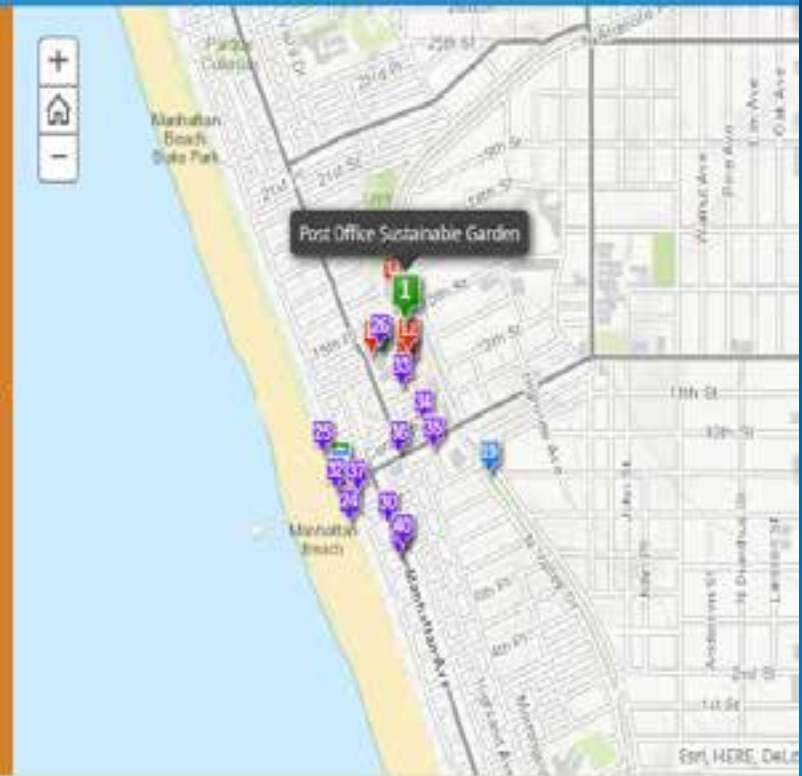
## Sustainable Living in Manhattan Beach

The goal of the City's Environmental Programs is to help maintain a good quality of life for those who live, work, and play in Manhattan Beach. [More Info](#)



Post Office Sustainable Garden

This Sustainable Garden at the Downtown Post Office was the Leadership Manhattan Beach 2012 class project, demonstrating the principles of sustainable landscaping, such as water conservation, reduction of runoff, and eco-friendly maintenance including the use of mulch. [More Info](#)



Post Office Sustainable Garden



City Hall Sustainable Garden



Pier Sustainable Garden



Manhattan Beach Botanical Garden



Anelson Park Sustainable Garden



Mulch pickup site



Electric Vehicle Charging Station



Electric Vehicle Charging Station

# Questions Comments

## STORY MAPS

Story Maps are intelligent web maps containing rich media and other functions that are used to inform and educate. There are a wide variety of Story Maps.

City Facilities Map Tour



Public Art Map Tour



Parking Lots Map Tour



# Thank you

Leilani Emnace

[lemnace@citymb.info](mailto:lemnace@citymb.info)

Bonnie Shrewsbury

[bshrewsbury@citymb.info](mailto:bshrewsbury@citymb.info)

