

# **Virtual Field Trips Made Easy with Story Maps**

2014 Esri UC

Jesse Wickizer

# Background

The Maps101 division of Maps.com provides schools with social studies education materials.



# Background

## Virtual Field trips!



# Background

**Use Story Maps to Inform and Inspire Your Audience**

Story maps combine interactive maps and multimedia content into elegant user experiences. They make it easy for you to harness the power of maps to tell your stories.

[WHAT'S A STORY MAP?](#) [FOLLOW US](#)

# What are Story Maps?

Convenient templates or “Web Apps” built with the *ArcGIS API for JavaScript* that are used to tell a compelling story.

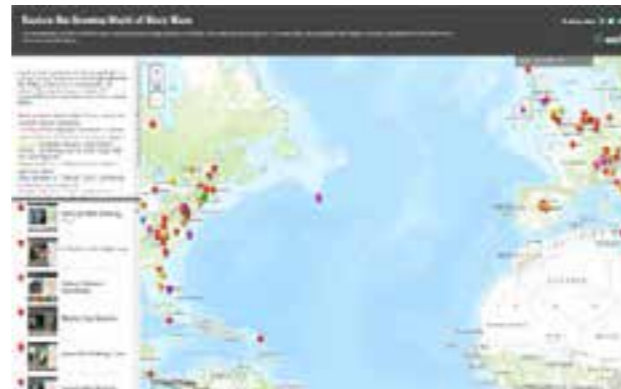
# What are Story Maps?

They use a web map, hosted at ArcGIS Online, as the background and overview of the story.

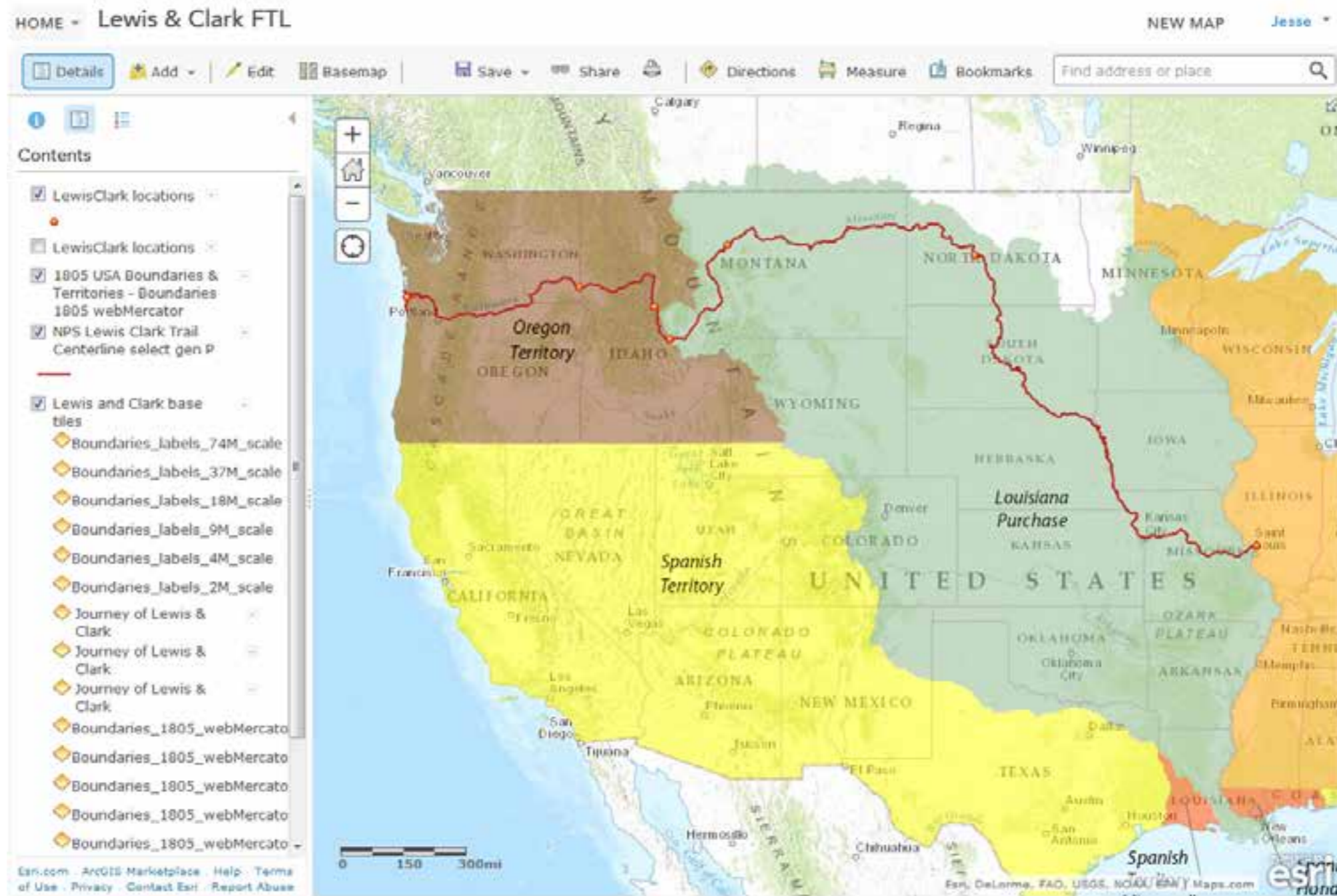


# What are Story Maps?

There are several templates/layouts to choose from.

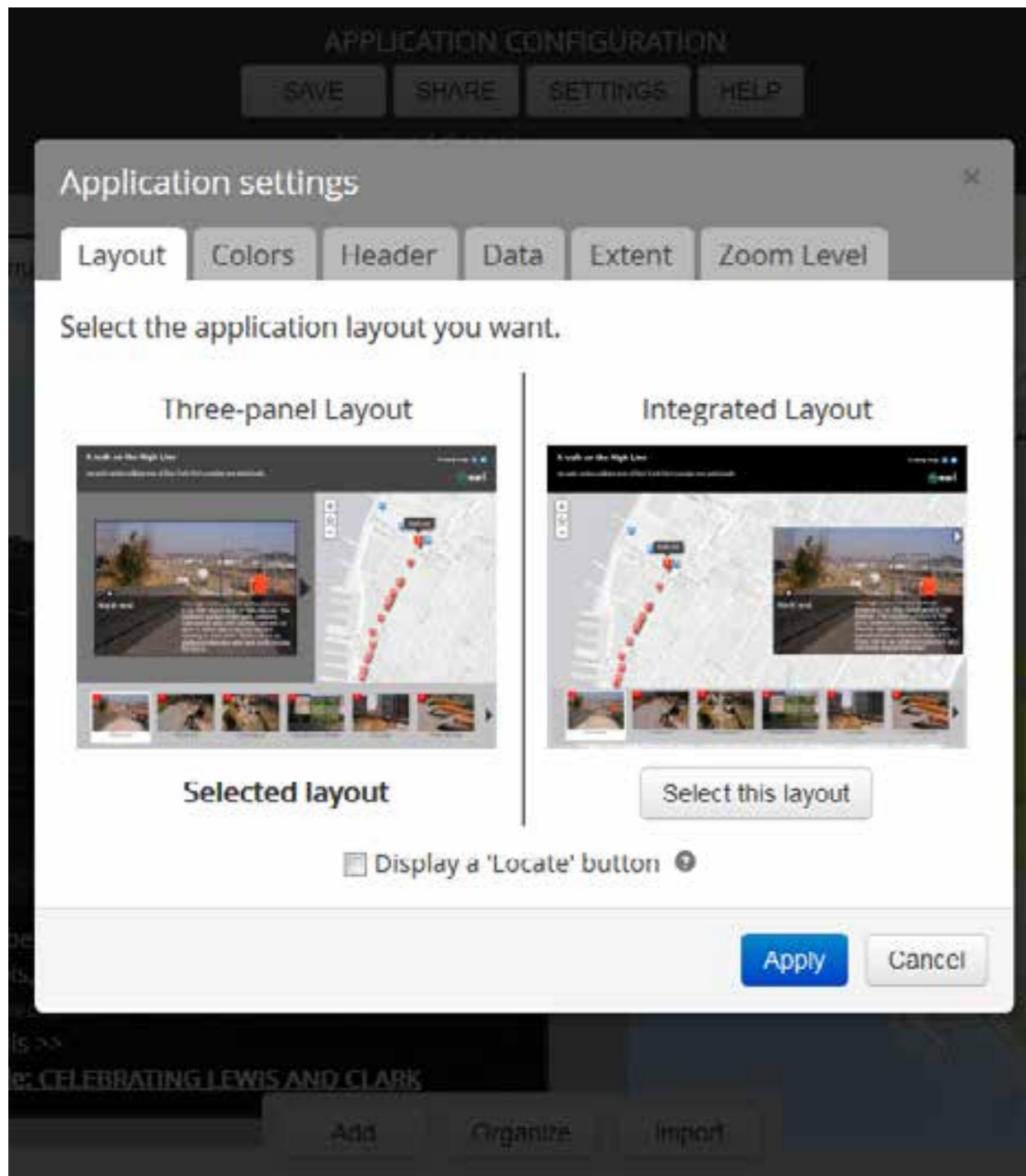


# How do I make a Story Map?





# How do I make a Story Map?



## Application Settings

Title:	<input type="text" value="Title"/>
Subtitle:	<input type="text" value="Subtitle"/>
<input checked="" type="checkbox"/> Display legend	
Maximum Zoom:	<input type="text" value="9"/>
Popup Width:	<input type="text"/>
Maximum Popup Height:	<input type="text" value="300"/>
<input checked="" type="checkbox"/> Include 'Zoom out' link button in popups	

SAVE RESET DONE

# How do I make a Story Map?

```
//The ID for the map from ArcGIS.com
webmap : "04744b7ad124458489ea821da3129352",
    //The id for the web mapping application item that contains configuration info - in most
//cases this will be null.
appid:"",
//Enter a title, if no title is specified, the webmap's title is used.
title : "",
//Enter a subtitle, if not specified the ArcGIS.com web map's summary is used
subtitle : "",
    //Display legend
legend : "true",
//specify a proxy url if needed
proxyurl:"",
//Modify this to point to your sharing service URL if you are using the portal
sharingurl : "",
//add default template options. This includes the bing key, sharing url, proxy url,
//and any service urls (geometry, geocode, print)
//that may be needed by the template.
bingmapskey: commonConfig.bingMapsKey,
helperServices:commonConfig.helperServices
```

# How do I make a Story Map?

```
45 function createMap() {
46
47   if (configOptions.legend === "false" || configOptions.legend === false) {
48     $("#legendCon").hide();
49   }
50   if(embed === "true" || $("#mainWindow").width() < 768 && embed !== "false"){
51     $("#header").hide();
52     $("#legendDiv").css("max-height",200);
53     dijit.byId("mainWindow").layout();
54   }
55
56   var mapDeferred = esri.arcgis.utils.createMap(configOptions.webmap, "map", {
57     mapOptions: {
58       slider: true,
59       sliderStyle: "small",
60       nav: false,
61       wrapAround180: true
62     },
63     ignorePopups: false,
64     bingMapsKey: configOptions.bingmapskey
65   });
```

# Change Story Map Functionality



The screenshot shows the Esri GitHub profile page. The profile header includes the Esri logo (a globe), the name 'Esri', and the location 'Redlands, California, USA' with a location pin icon, and the website 'http://www.esri.com' with a globe icon. Below the header is a search bar with the text 'storytelling' and a search icon. The search results list three repositories:

- shortlist-storytelling-template-js** (JavaScript, 3 stars, 8 forks)  
The Shortlist story map application template by Esri  
Updated on May 20
- playlist-storytelling-template-js** (JavaScript, 6 stars, 16 forks)  
A storytelling template that organizes point data sets from a CSV file embedded in your web map into an organized interactive list  
Updated on May 20
- side-accordion-map-storytelling-template-js** (JavaScript, 8 stars, 21 forks)  
A storytelling template for publishing a web map to a general audience; includes accordion side panel and dropdown legend. Responsive design supports most devices with a single URL.  
Updated on May 13

# Change Story Map Functionality

- Clone the repo to your desktop.
- Create a new branch for your own master.
- Branch off that to start customizing.
- Use your favorite IDE to edit the code.



# Example

## Zooming functionality in *Playlist* template

**Smithsonian's 20 Best Small Towns to Visit in 2013 (and 2012)** A story map [f](#) [t](#) [s](#)

From the blues to the big top, we've picked the most intriguing small towns to enjoy arts and smarts.

esri

MAP LEGEND ▾

What makes a small town big on culture? **This year (red)** and **in 2012 (blue)** we sought a statistical answer to this question by asking the geographic information company Esri to search its databases for small towns and cities that have exceptional concentrations of museums, art galleries, orchestras, theaters, historic sites and other cultural blessings. Happily, the top towns also boast heartwarming settings where the air is a little fresh.

-  **1** Gettysburg, Pennsylvania
-  **2** Cleveland, Mississippi
-  **3** St. Augustine, Florida



# Example

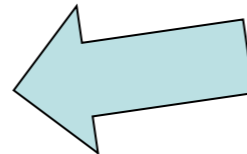
## Zooming functionality in *Playlist* template



# Example

## Locate current functionality in code

```
184 layer.queryFeatures(query,function(result){
185     var graphic = result.features[0];
186
187     if (!graphic.infoTemplate){
188         graphic.infoTemplate = layer.infoTemplate;
189     }
190
191     if (graphic.getNode() && domGeom.position(graphic.getNode()).x > getSidePanelWidth()){
192         var mapPos = domGeom.position(dom.byId(mapSelector));
193         var point = new ScreenPoint(domGeom.position(graphic.getNode()).x - mapPos.x, domGeom.position(graphic.getNode()).y - mapPos.y);
194         openPopup(graphic,_map.toMap(point));
195     }
196     else{
197         on.once(_map,"extent-change",function(){
198             _map.infoWindow.hide();
199             openPopup(graphic);
200         });
201         panMapToGraphic(graphic.geometry);
202     }
```

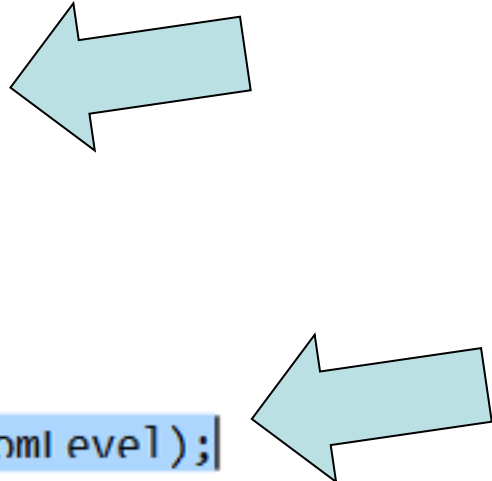




# Example

## Change code

```
198 layer.queryFeatures(query,function(result){
199     var graphic = result.features[0];
200
201     if (!graphic.infoTemplate){
202         graphic.infoTemplate = layer.infoTemplate;
203     }
204
205     if (zoomAndCenterEachPoint) {
206         var featureZoomLevel = _map.getZoom();
207         if (graphic.attributes.ZoomLevel) {
208             featureZoomLevel = graphic.attributes.ZoomLevel;
209         }
210     on.once(_map, "extent-change", function () {
211         _map.infoWindow.hide();
212         openPopup(graphic);
213     });
214     centerAndZoomToGraphic(graphic.geometry, featureZoomLevel);
215 }
```



# Example

```
641  function centerAndZoomToGraphic(geometry, zoomLevel) {  
642      _map.centerAndZoom(geometry, zoomLevel);  
643  }
```

# Example

## Publish Changes





[jesse.wickizer@maps.com](mailto:jesse.wickizer@maps.com)