



# ArcGIS for Aviation: Airports - Managing Airport GIS Data for Domestic and International Regulatory Compliance

Shane Barrett

Technical Workshop

# Airport Regulations

- Constantly being introduced & evolved
- New Generation of Digital Information
  - Data Capture and Maintenance
  - Information Distribution
  - Evolving Data Standards

18B Regulations  
EUROCONTROL  
Guidelines  
16A  
ICAO  
ADQ  
Standards  
eTOD  
Specifications  
FAA  
Notices  
17C  
Requirements  
Directives  
AMDB  
Advisory Circulars

# Regulatory Compliance Challenges

- Compliance Management
- Data Management
- Data Consistency/Integrity
- Resources



# ArcGIS for Aviation: Airports

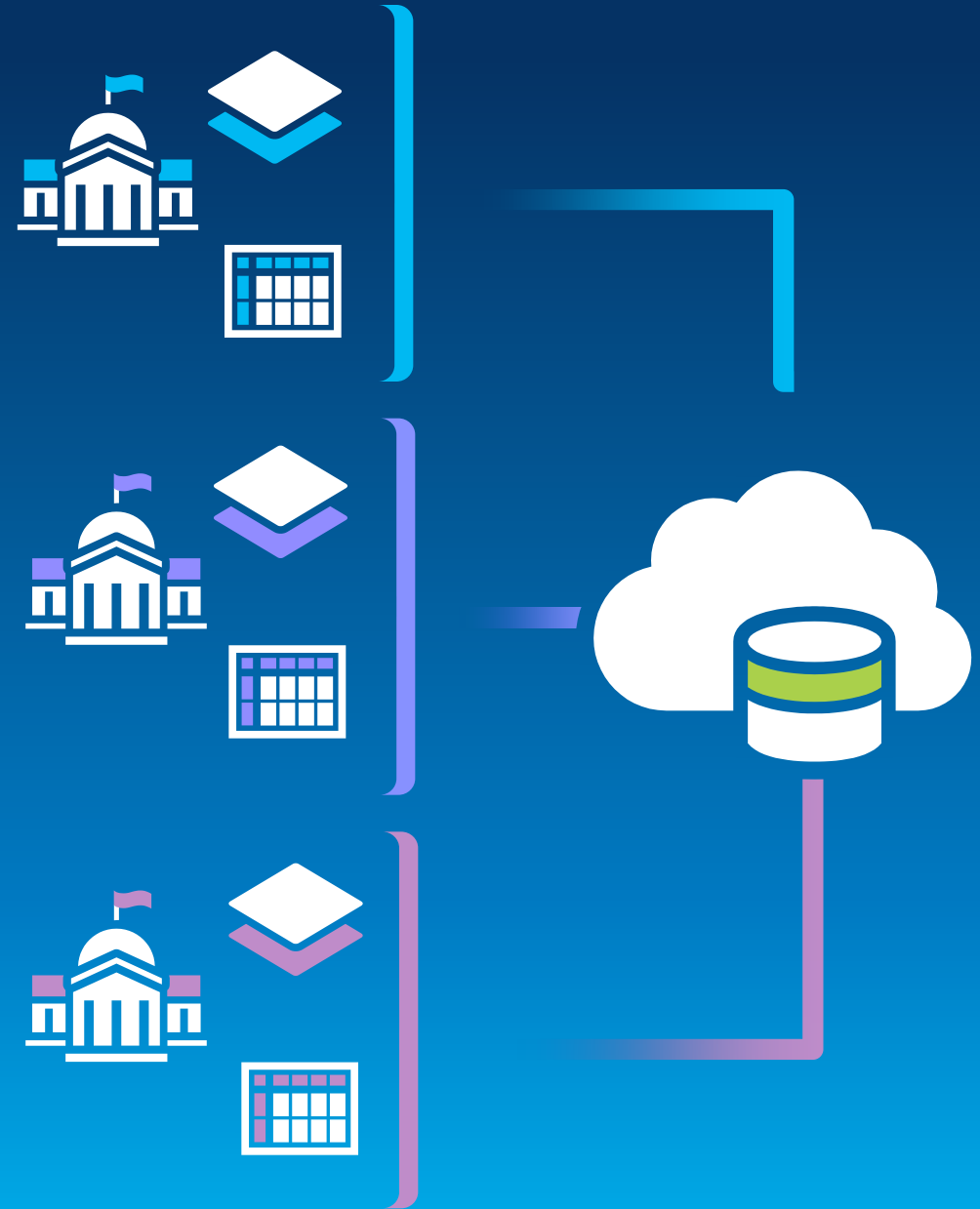
Goal – To Enable Airports to achieve data compliance with minimal effort

- **Integration into Esri Platform**
- **Central Architecture to maintain all Airports data**
- **Flexible Architecture & Deployment**



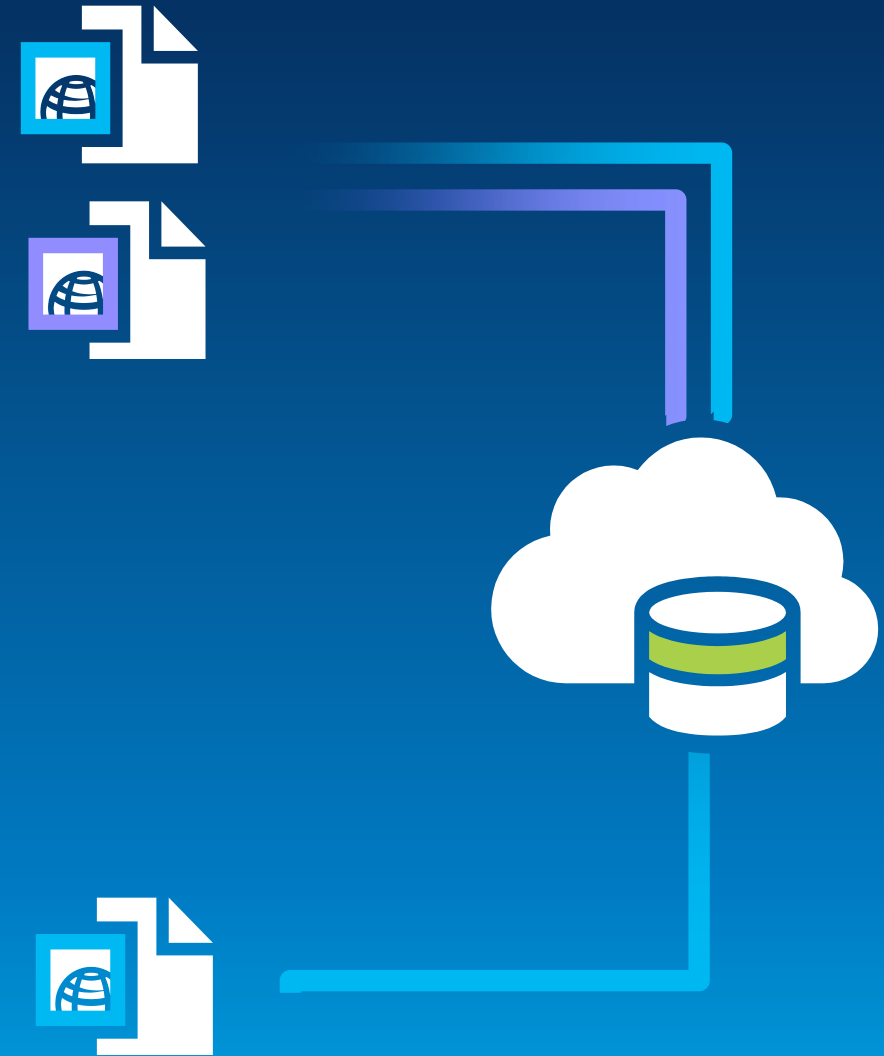
# Airports Data Model

- **Multiple Standards Support**
  - 18B
  - AMDB
  - eTOD
- **Extensible and Customizable**
- **Data Consistency/Integrity**



# Data Exchange Tools

- **Custom Import/Export with Airports Data Model**
  - **18B**
    - Import
    - Export
  - **AMDB**
    - Import



# Data Validation Tools (ArcGIS Data Reviewer)

- Automated Tools for Quality Control Processes
- Preconfigured Standards Support
  - 18B
  - AMDB
  - eTOD
- Attribution and Geometry Checks
- Extensible and Customizable
- Accountability/Documentation





# Demonstration

Technical Workshop



# Currently in Development

- **Improved Data Exchange tools**
  - AIXM 4.5 & 5.1
  - AMDB
- **Cyclic Redundancy Checks (CRC)**
- **Temporality**
  - AIXM 5.1
  - AMDB
  - AC 18C

- **Esri Showcase – Mapping and Visualization Island**



## Other Airports UC Sessions

- **ArcGIS Data Reviewer: Integrating ArcGIS Data Reviewer and ArcGIS Workflow Manager to Automate Data Quality Control Workflows**
  - Wed. 11:30 – 12:00 – Demo Theater Exhibit Hall C
- **ArcGIS for Aviation**
  - Wed. 4:30 – 5:00 – Demo Theater Federal Showcase
- **Environmental Regulations and Influences around Airports**
  - Thu. 8:30 – 9:45 – Room 24 A
- **Meeting FAA's Airports GIS Requirements II**
  - Thu. 10:15 – 11:30 – Room 24 A
- **Airports and Ports SIG**
  - Thu. 12:00 – 1:00 – Room 24 B
- **Software Integration at Airports**
  - Thu. 1:30 – 2:45 – Room 24 A



**Thank you...**

- **Please fill out the session survey:**

**Offering ID: 1776**

**Online – [www.esri.com/ucsessionsurveys](http://www.esri.com/ucsessionsurveys)**

**Paper – pick up and put in drop box**



Understanding our world.