



Troubleshooting Printing and Exporting from ArcMap

Michael Grossman

Demo Theater

So you want to Print your Map?

- **Which Printer Engine?**

- Try *Windows* first!
- When it fails, use *ArcPress*
 - List of printers:
 - <http://esriurl.com/4670>
- Don't use *Postscript**
 - *unless you need to for separates
 - *no, it's not required for ps printer
 - *you probably should use *Production Mapping*

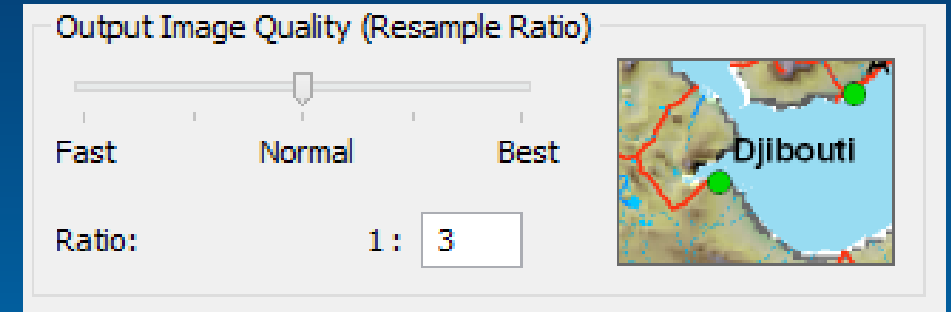


- **Why do I see 12 tiny pieces of paper?:**

- You're printing 12 short strips of paper from your roll printer because **Map Page Size** and **Printer Page Size** are different.
- If you want to tile: tiling options are only enabled when “**Use Printer Paper**” is *off* and one copy is selected.
- “**Scale Map to fit Printer Paper**” means your scale text is going to be wrong – this is photocopier-style scaling.

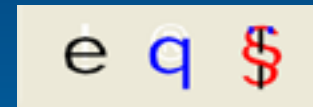
Printing Troubleshooting Strategies

- **Maps with large raster layers (or rasterization)**
 - Try lowering Output Image Quality setting
 - Raster Layer Properties: Display Quality setting
 - Use *ArcPress*
- **Maps with complex vector symbology**
 - Use *ArcPress*
 - Limit use of text halos and variable depth masking
 - Use data appropriate for scale
 - Use scale ranges to cull “too detailed” content



Export Troubleshooting

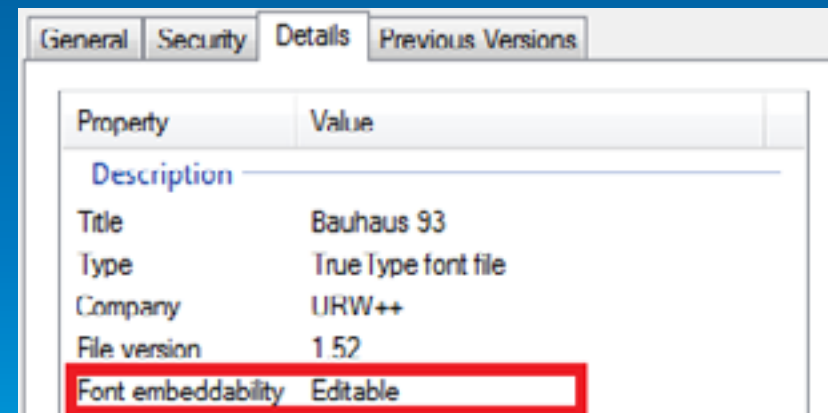
- **ALWAYS** embed fonts!
 - On by default
 - Check that fonts are embedded in the fonts tab of “document properties” in Adobe Reader (CTRL-D)
 - Should say “*embedded subset*” next to font name



- If you have font embedding problems

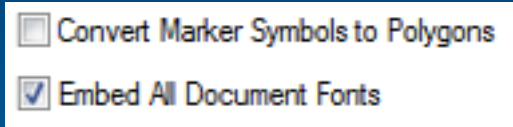
- Verify that font is embeddable:

- Using Windows 7+ open the properties of the font file
- Using Windows Vista or XP - install “OpenType Font Properties shell extension” from Microsoft: <http://esriurl.com/4673>

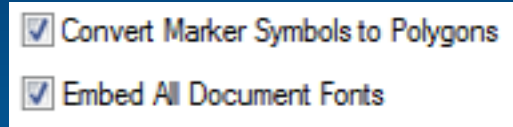


More Export Troubleshooting Strategies

- Avoid the “Convert Marker Symbols to Polygon” option, use font embedding instead

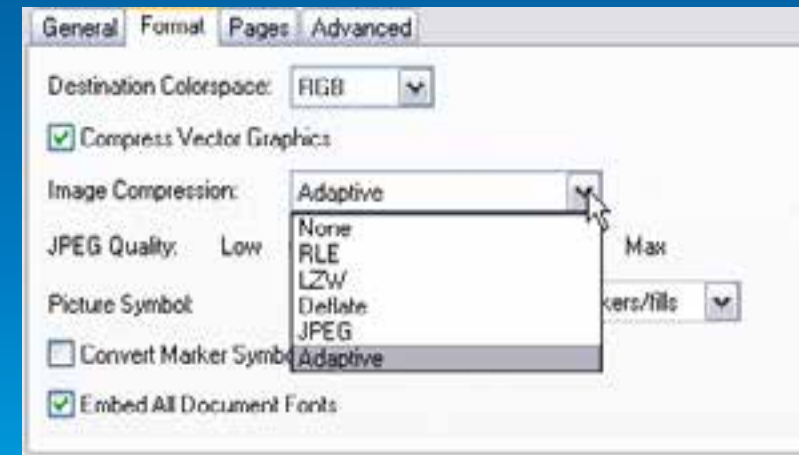


GOOD



BAD

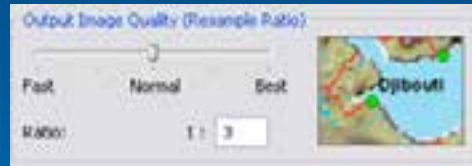
- When file size too large, verify that vector layers are not *rasterizing* on output, and use “Adaptive” compression for PDF.



Rasterization on Output (“jaggies”)

- **Causes**

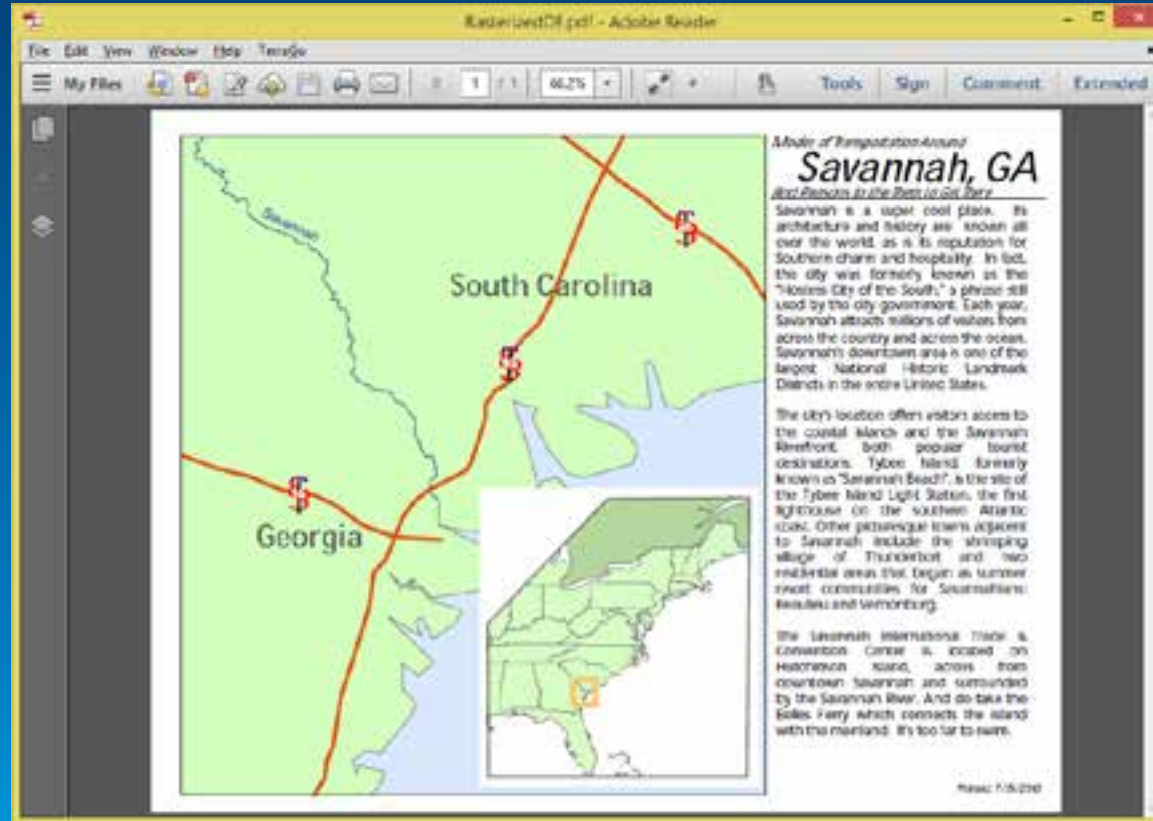
- Layer transparency above vector layer
- Picture marker symbols
- Raster Layer on top
- Low OIQ setting



- **Use the “Detect Rasterizing Layers” python script**

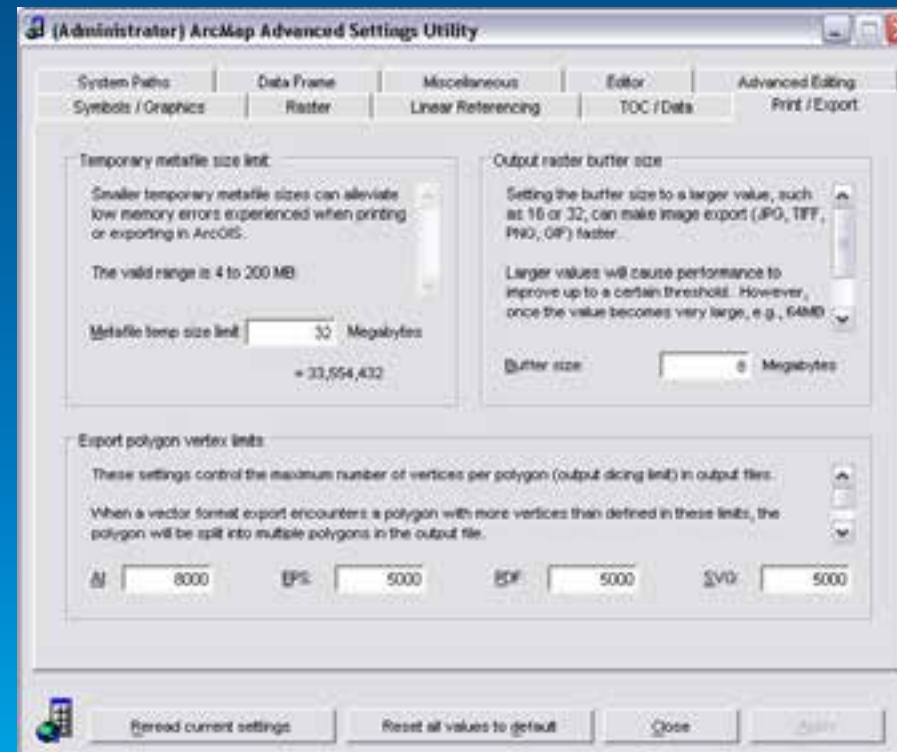
- <http://esriurl.com/4672>
- Cut and paste into Python window and execute

Demo – Troubleshooting a PDF Export



AdvancedArcMapSettings (Print/Export)

- Located in %ARCGISHOME%\Utilities
- Print / Export tab has troubleshooting settings
- Metafile Size Limit
 - Decrease to solve some export issues
- Other settings:
 - Consult document in the same folder for information.



Related workshops

Python Map Automation: Beyond the Basics of arcpy.mapping

- Thursday, 17 Jul 2014, 1:30pm - 2:45pm
- Location: Room 15 B

Desktop Mapping: Building Map Books

- Thursday, 17 Jul 2014, 3:15pm - 4:30pm
- Location: Room 02



Understanding our world.