



- Please contact Curt Hammill at chammill@esri.com

ArcGIS for the Military - Maritime Operations

Curt Hammill

John Fry

Technical Workshop

ArcGIS Is a Platform

Enabling Web GIS Everywhere

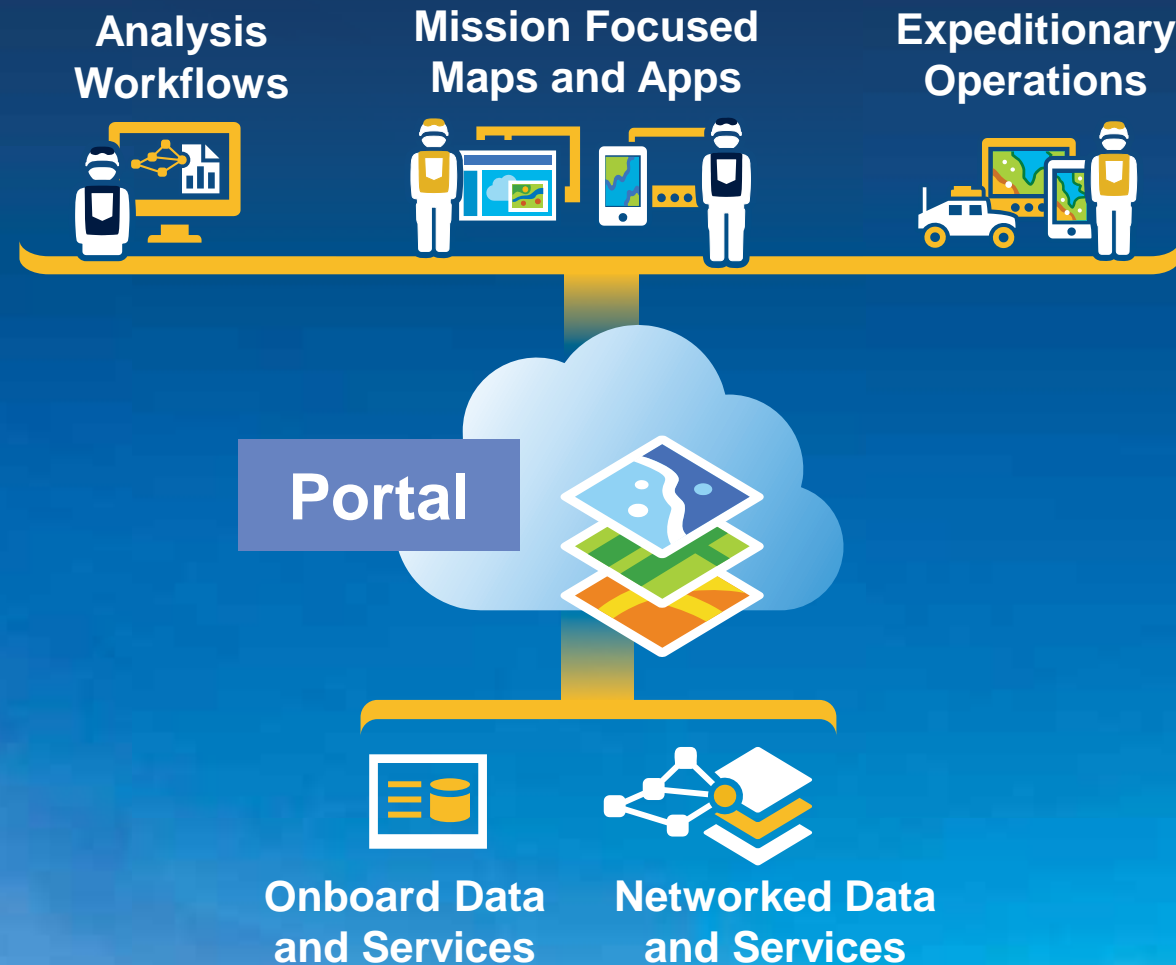
Simple
Integrated
Open



*Available in the Cloud . . .
. . . and On-Premises*

ArcGIS Is a Platform for Maritime Operations

Simple to Use
Integrated Operations
Open Standards



With Data And Services Afloat and Ashore

The ArcGIS Platform Supports Both Maritime Communities



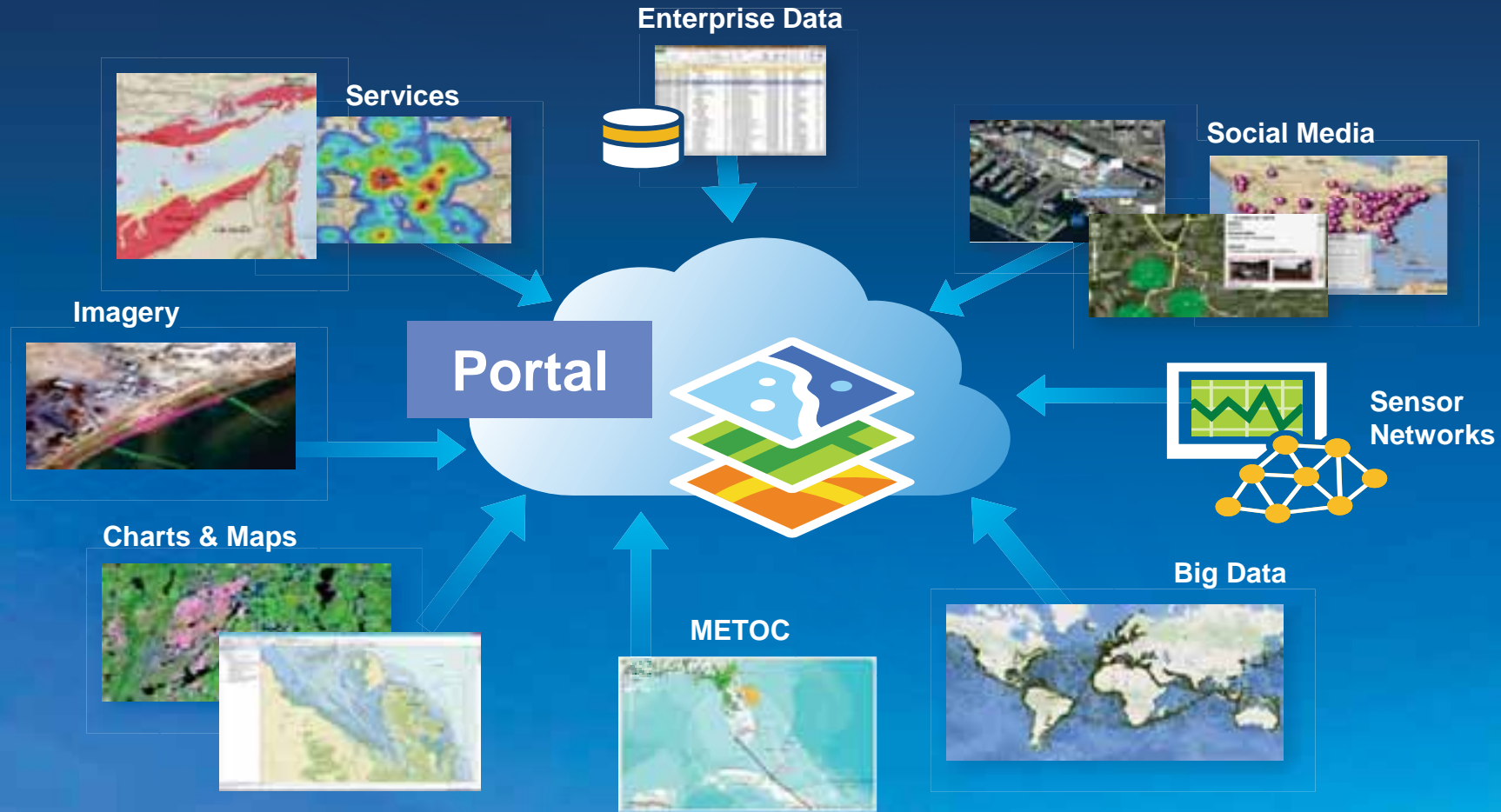
... Providing a Common Platform For Everyone

A Growing Challenge...



The ArcGIS Platform Manages Maritime Data Types

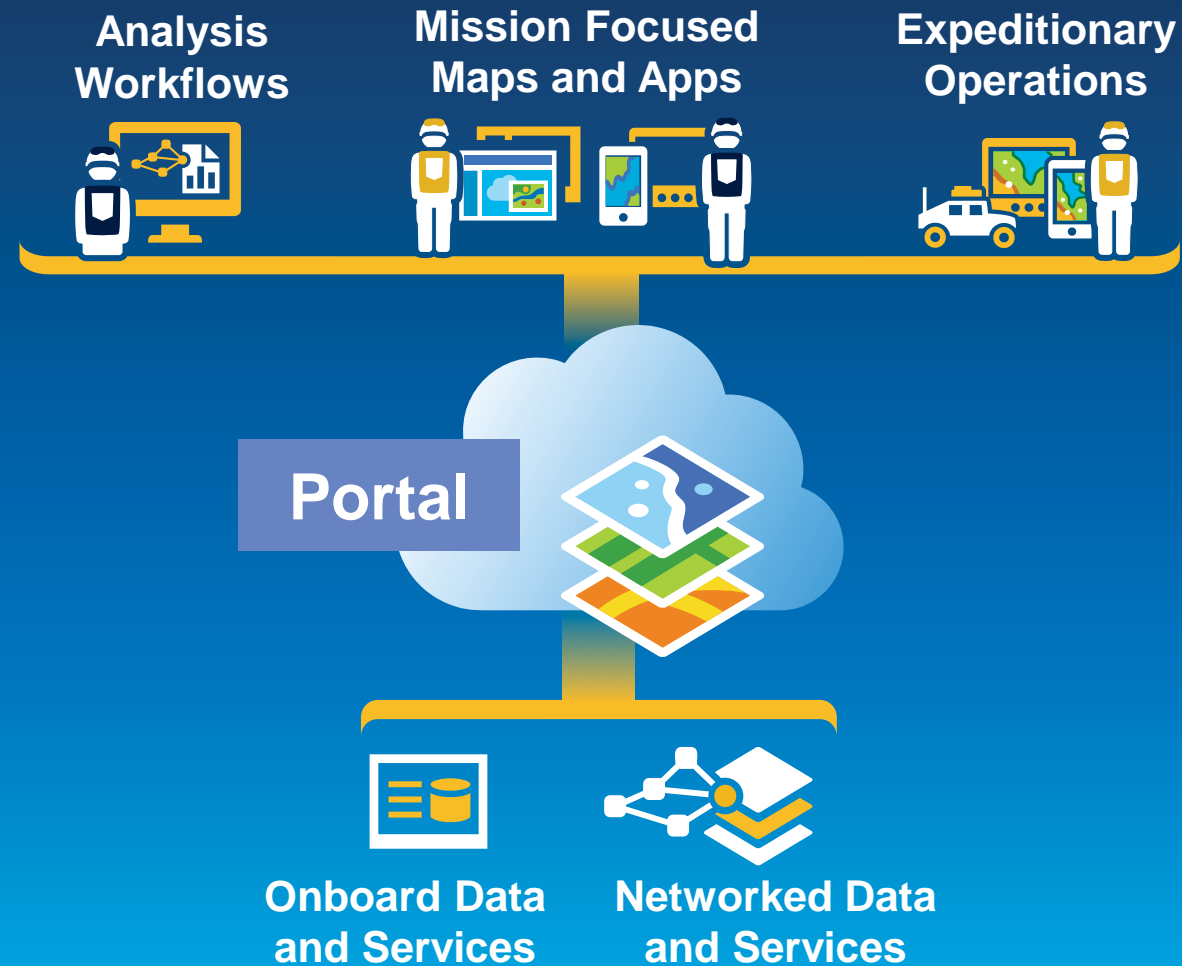
As Web Maps and Web Services



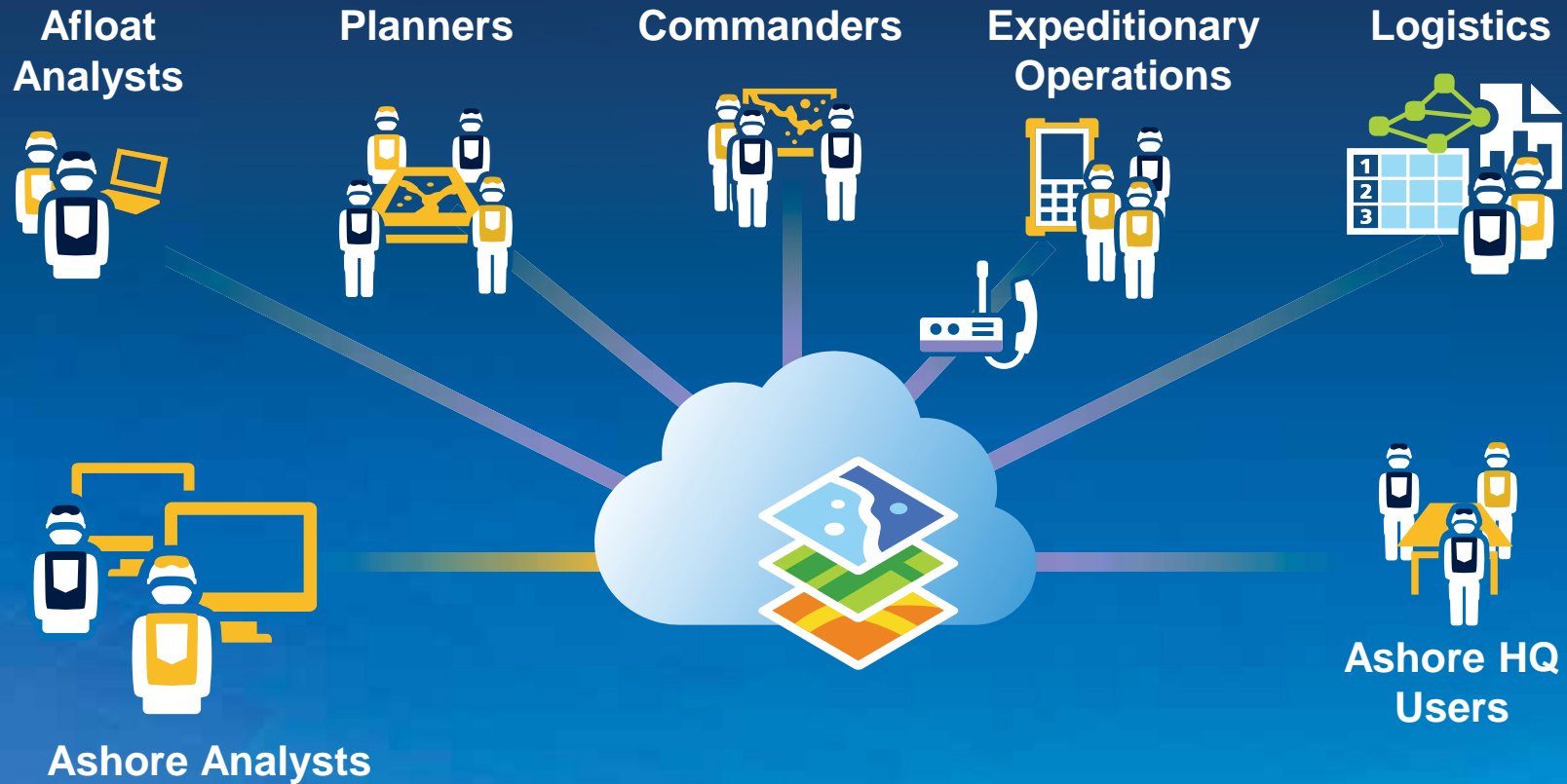
Providing a Broad Basis for Informed Decisions

Portal for ArcGIS

Platform Centerpiece



ArcGIS for the Military – Maritime Operations



Shared Data and Services Enables Decision-making

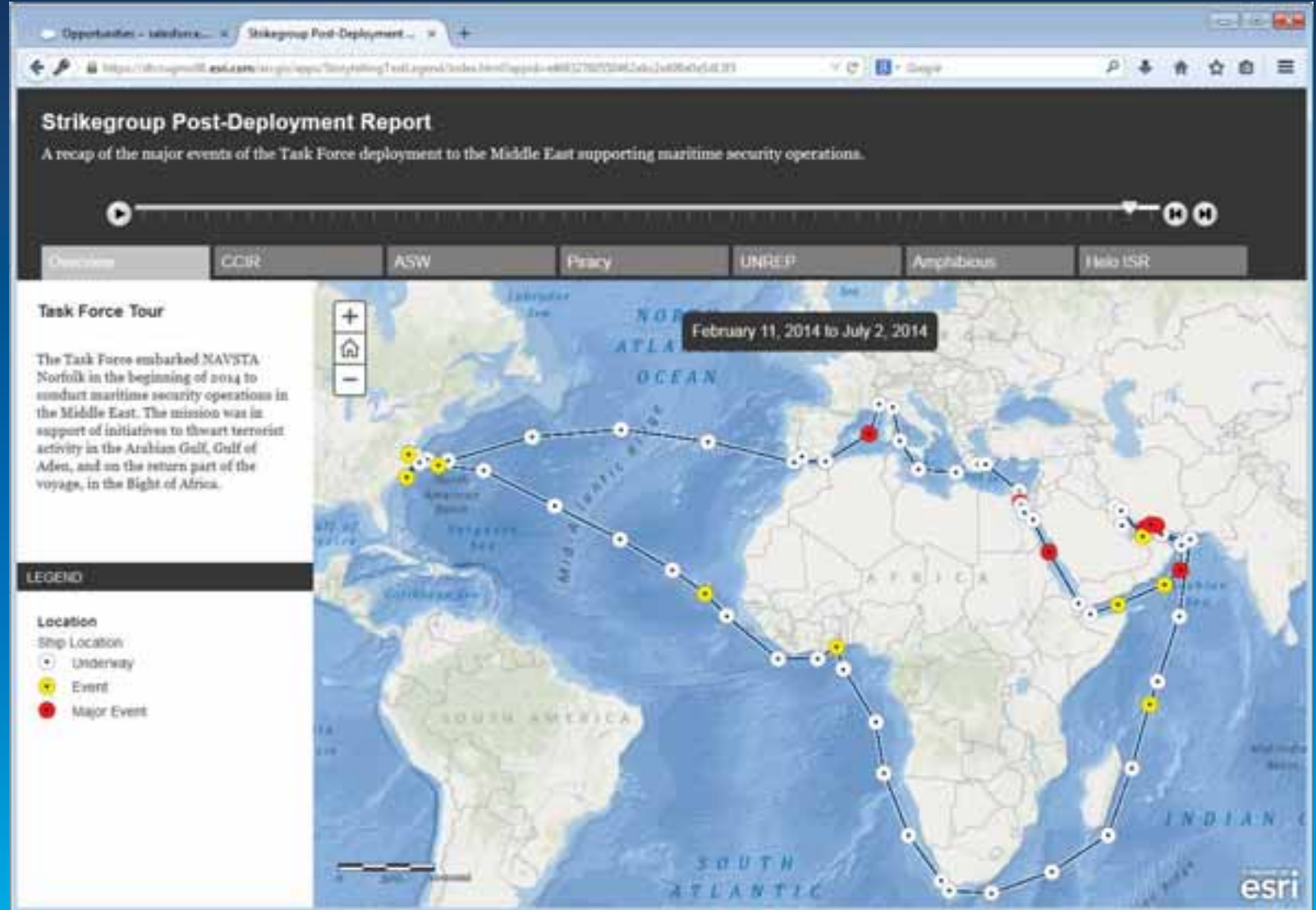


UNDERWAY!

Portal for ArcGIS

Platform Centerpiece

Storymap App



Demo

Making Maps & Apps with Portal for ArcGIS



Demo

Maritime Decision Aids with ArcGIS Desktop



Demo

For Every User Esri Maps for Office

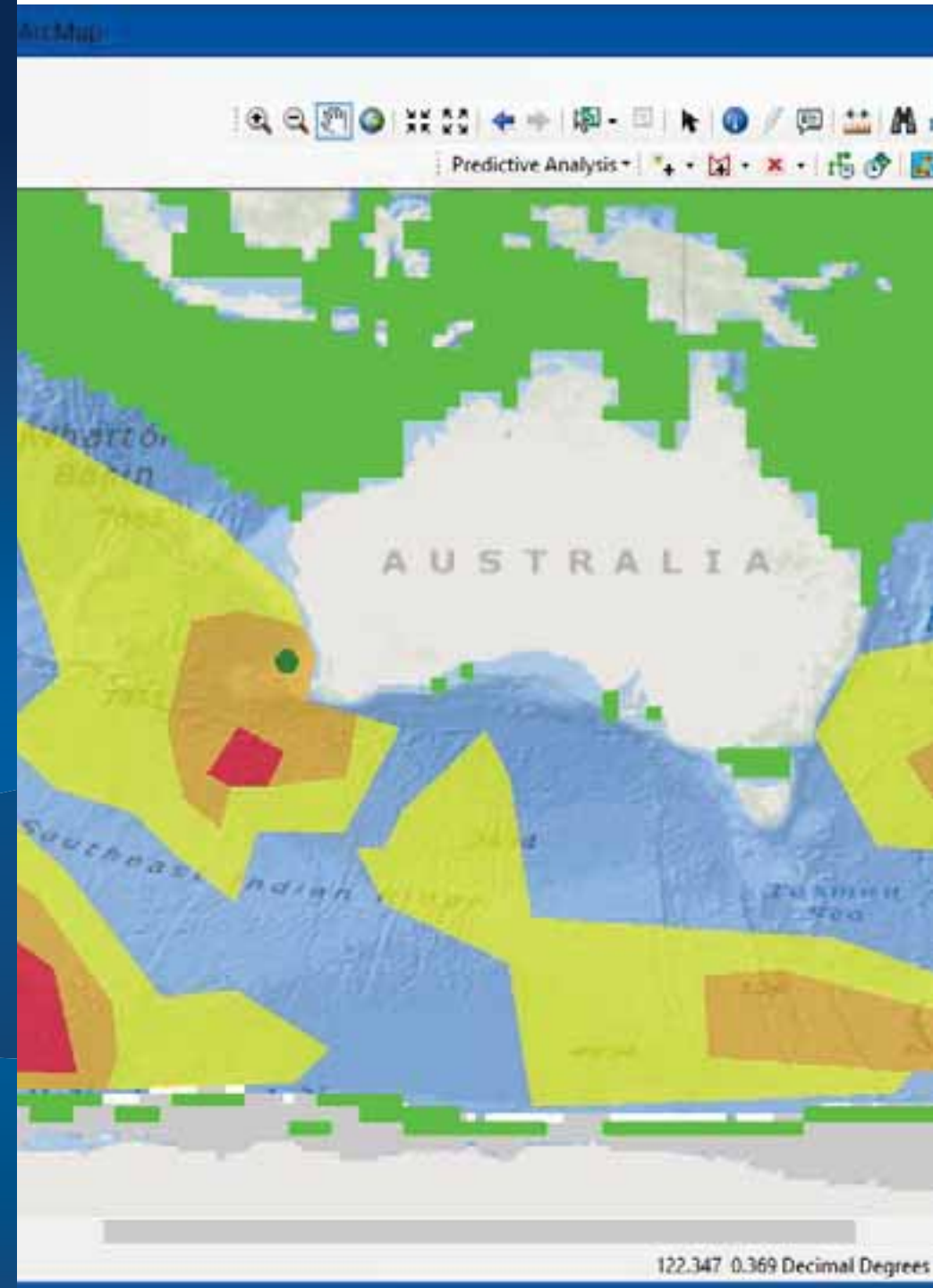


Microsoft Excel spreadsheet showing a table of data with columns for Desc1, Latitude, and Longitude. The data includes entries for Bangladesh, Yemen, and India. An inset map shows a heatmap of the Gulf of Aden region with a red and yellow hot spot.

Desc1	Latitude	Longitude
BANGLADESH: An unidentified bulk carrier	21.70833	89.915
YEMEN: An unidentified cargo ship re	14.57667	49.5583333
	17.34861	40.2677778
	22.31667	91.8166667
	13.75	49.8333333
	13.41667	47.5
	21.08083	38.3113889
	21.535	90.3333333
	24.72667	61.9166667
	21.09778	38.3416667
	21.56167	91.5916667
	14.7	50.9333333
	12.45	44.7
	8.1	76.7166667
	29.9	48.7
	8.205	76.7733333
	20.25833	71.4516667
	15.59833	55.6883333
	13.095	80.375
	12.56667	51.6166667
INDIA: Unidentified bulk carrier repor	13.1	80.3666667

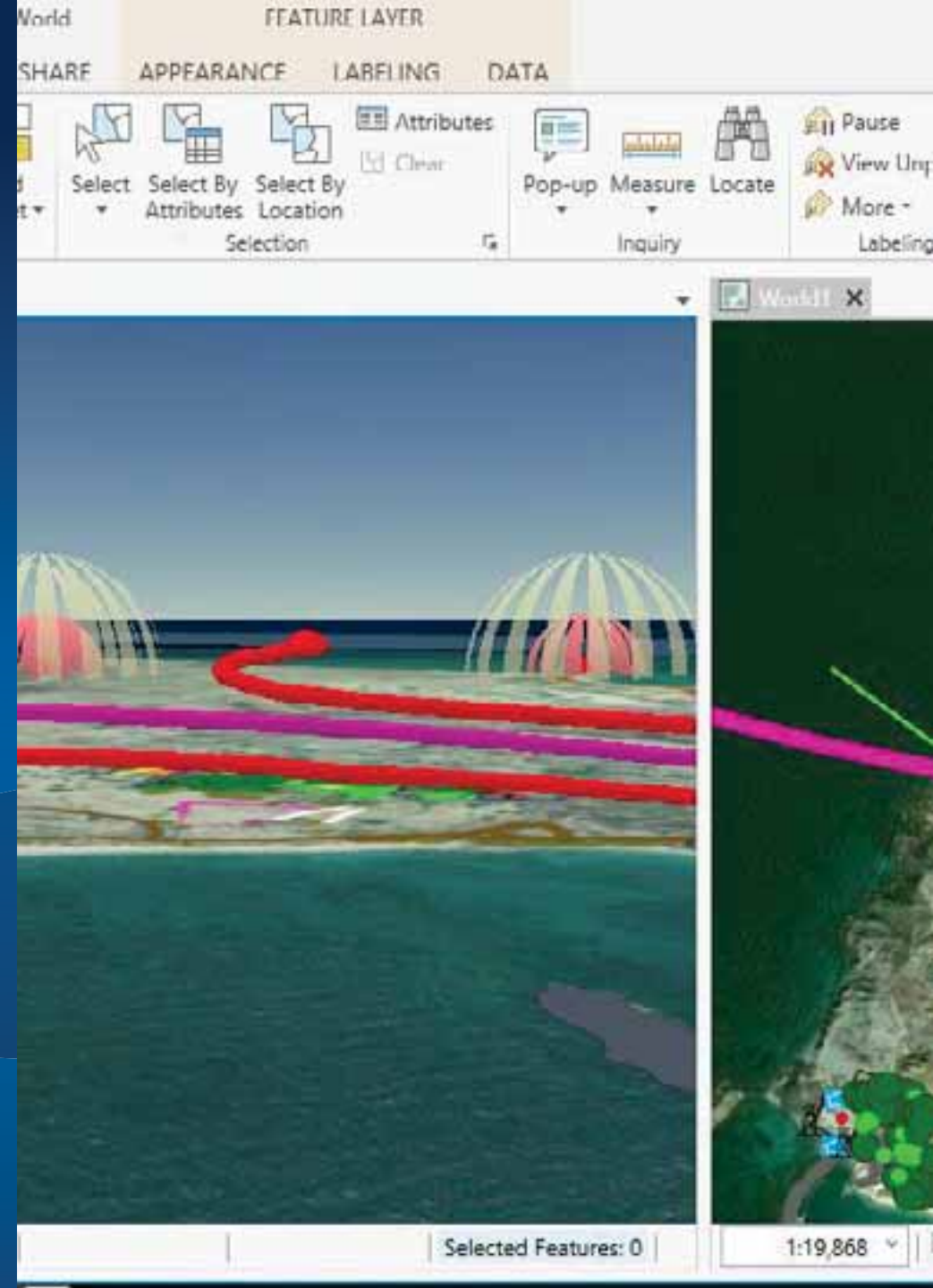
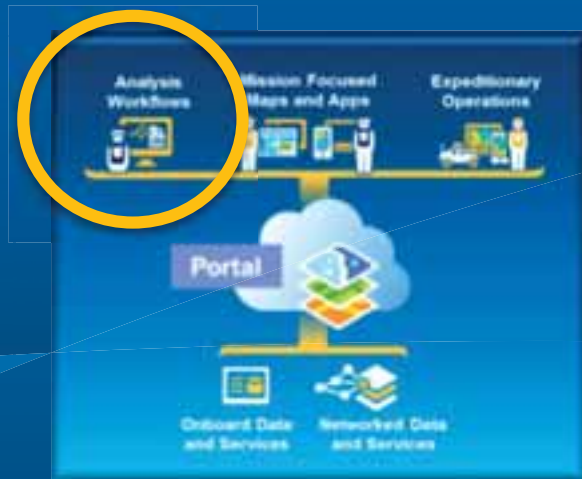
Demo

METOC Analytics with ArcGIS Desktop



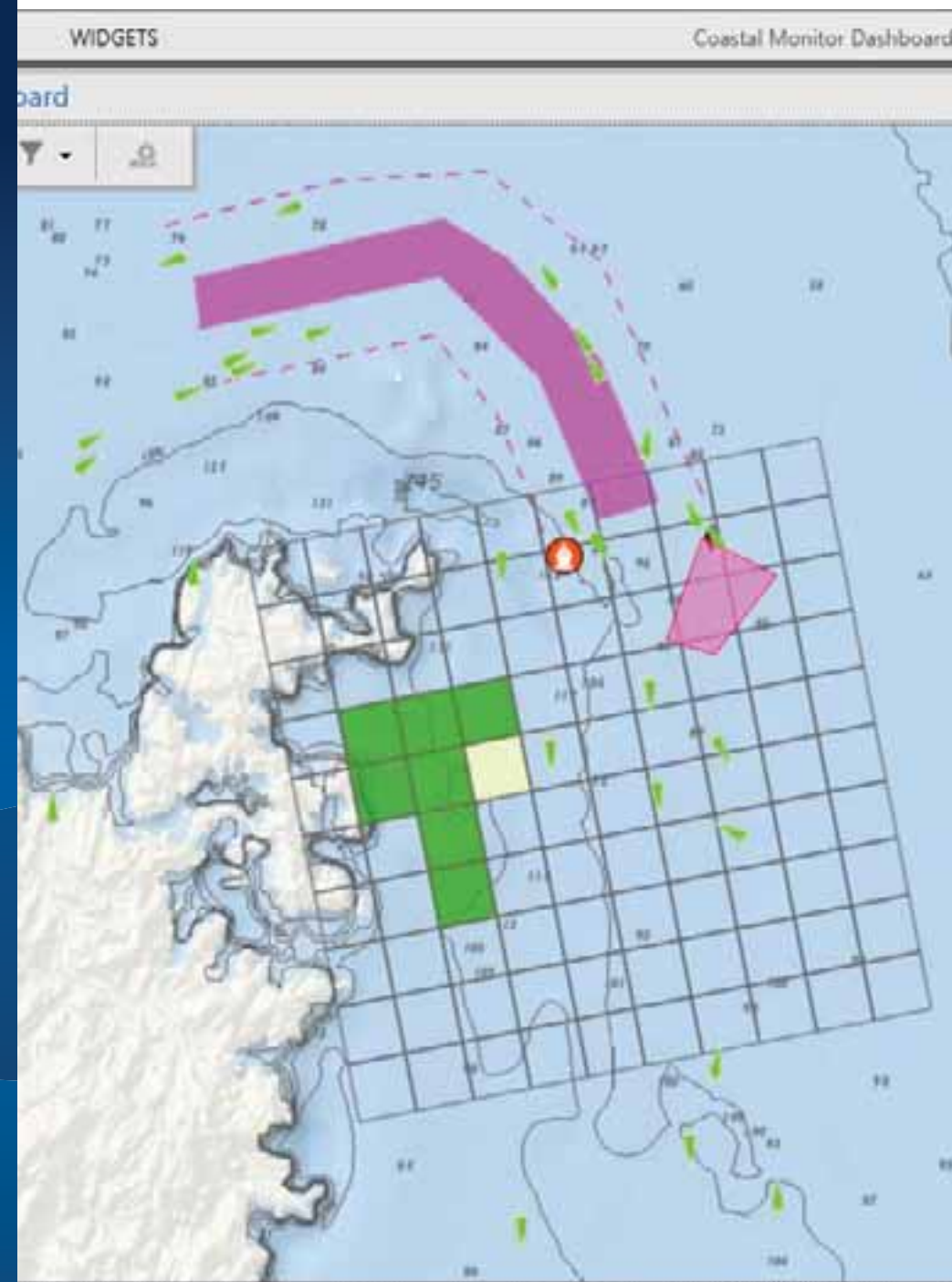
Demo

Mission Planning with ArcGIS Pro App



Demo

Mobile Operations with Collector App



Demo

Operational Picture with Dashboard App



Coastal Monitor Dashboard

Latest Area Collects

- Petroleum Products
June 30, 2014

Friendly Vessels

- 431999648 : IKAZUCHI
6/30/2014 09:47 :
- 470288000 :
6/30/2014 09:47 :
- 311628000 :
6/30/2014 09:47 :
- 671237000 :
6/30/2014 09:47 :

Legend

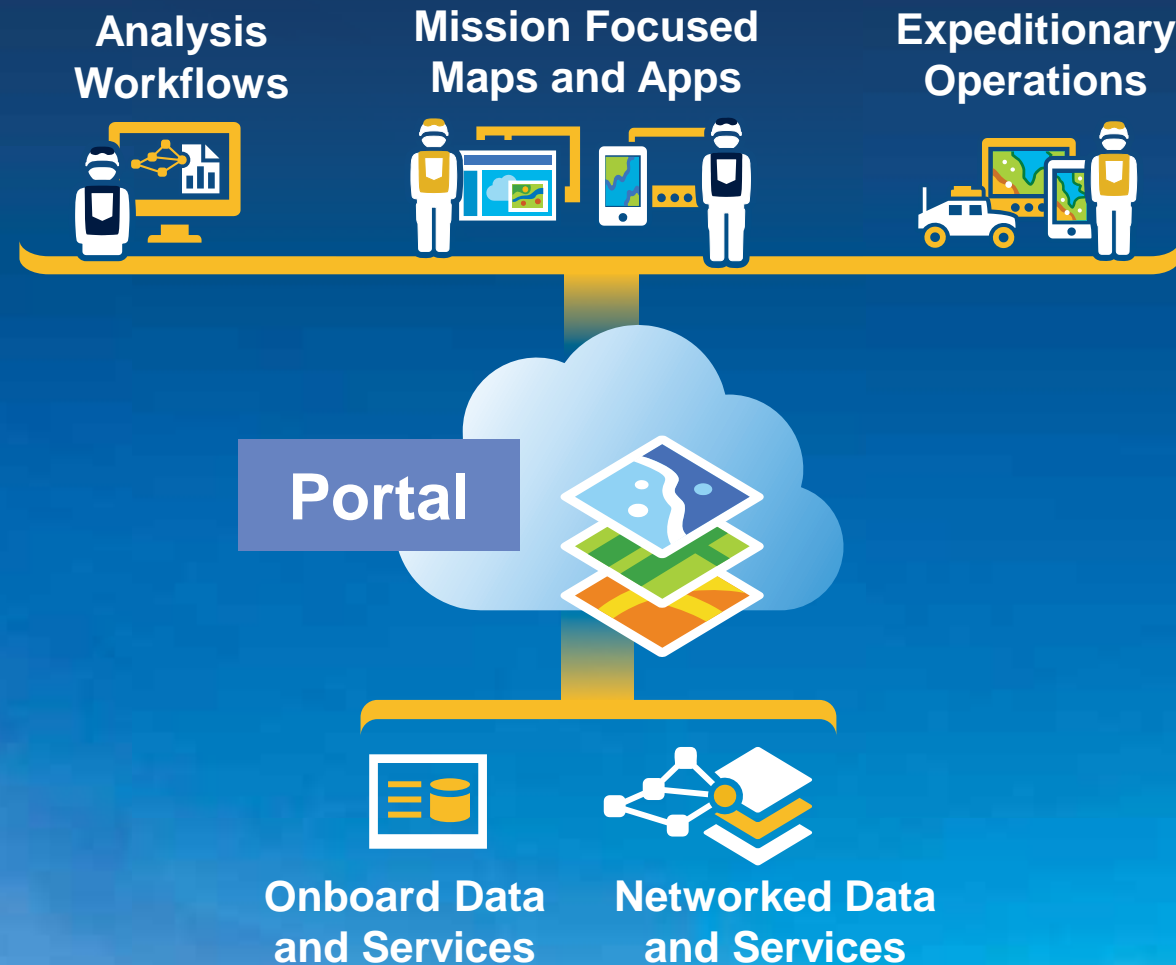
- Air Surveillance Collections - Air Surve
- Ship
- Debris
- Marine Mammal
- Other
- Air Surveillance Collections - Air Surve
- Petroleum Products
- Sewage

POWERED BY esri

ZOOM - +

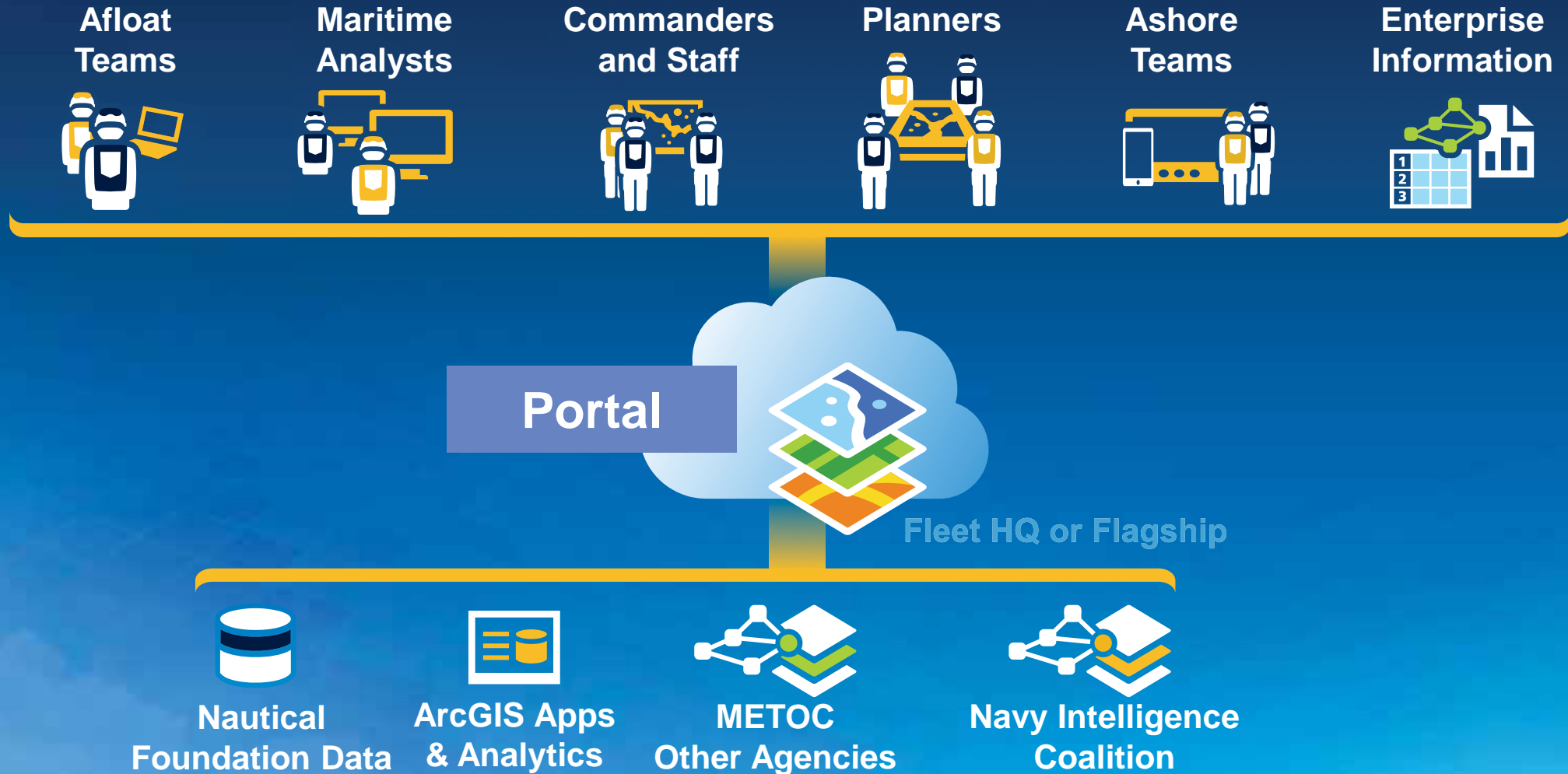
ArcGIS Is a Platform for Maritime Operations

More than Briefings
More than Mapping



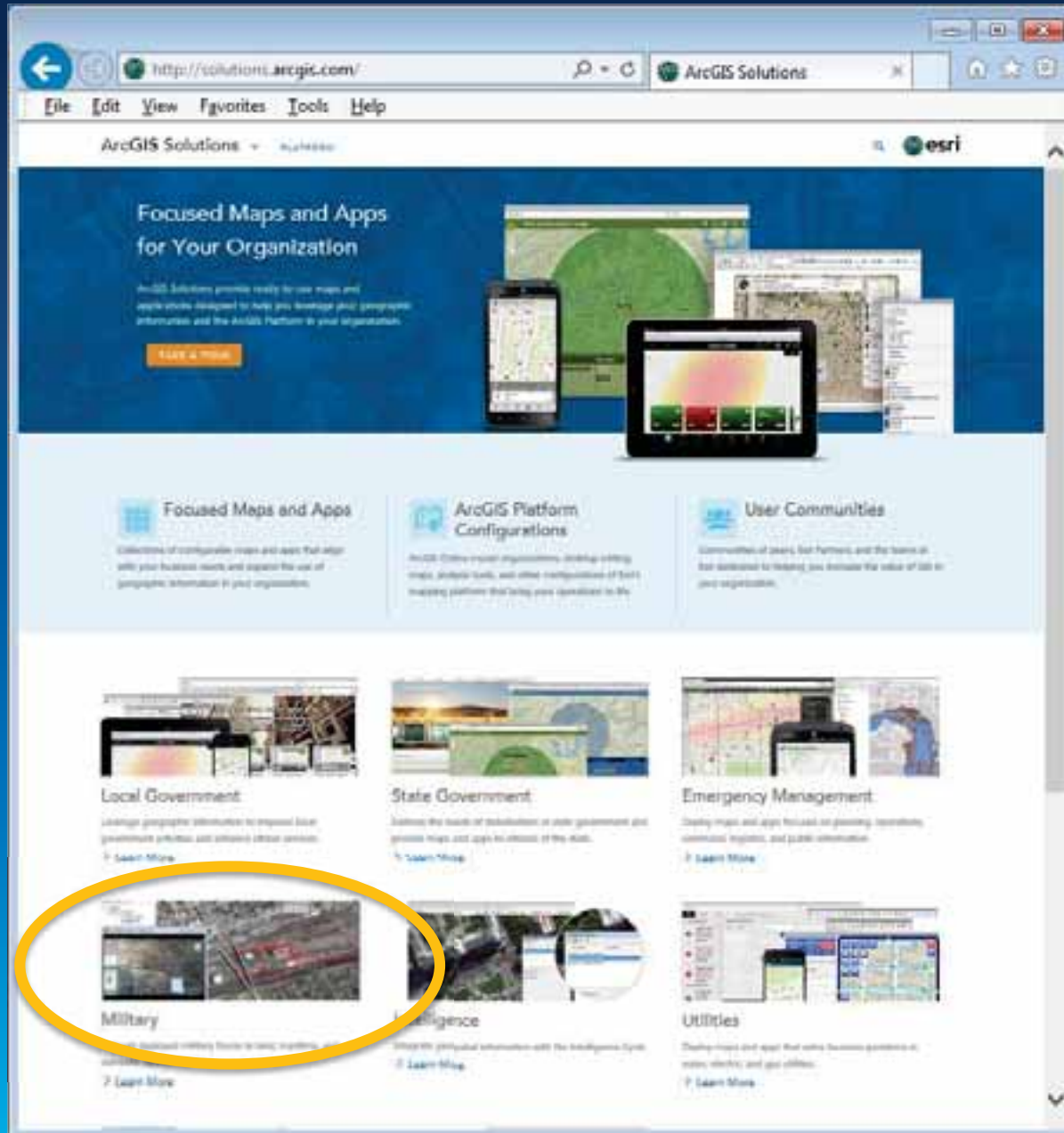
With Data And Services for Decision Superiority

The Fleet Platform Vision



Want to learn more?

solutions.arcgis.com



Want to learn more?

Defense & Intelligence Showcase



Thank you...

Please contact Curt Hammill at chammill@esri.com

- Please fill out the session survey:

Offering ID: 1498

Online – www.esri.com/ucsessionsurveys

Paper – pick up and put in drop box



Questions?



Understanding our world.