



ArcGIS for Intelligence: An Overview

Tara Mott

Craig Cleveland

Renee Bernstein

Technical Workshop

Goals for Workshop

- What is ArcGIS for Intelligence?
- Demo ArcGIS for Intel Solutions
 - Source Management
 - Analysis and Fusion
 - Dissemination
- Resources

ArcGIS Solution Templates

Local Government



State Government



Utilities



Telecommunications



Public Safety



Emergency Management



Military



Intelligence



A Changing World

A Dynamic World Creates New Intelligence Challenges

Global Corporations

Cyber Warfare

Natural Disasters

Border Security

Domestic Terrorism

Political Crisis

Energy Security

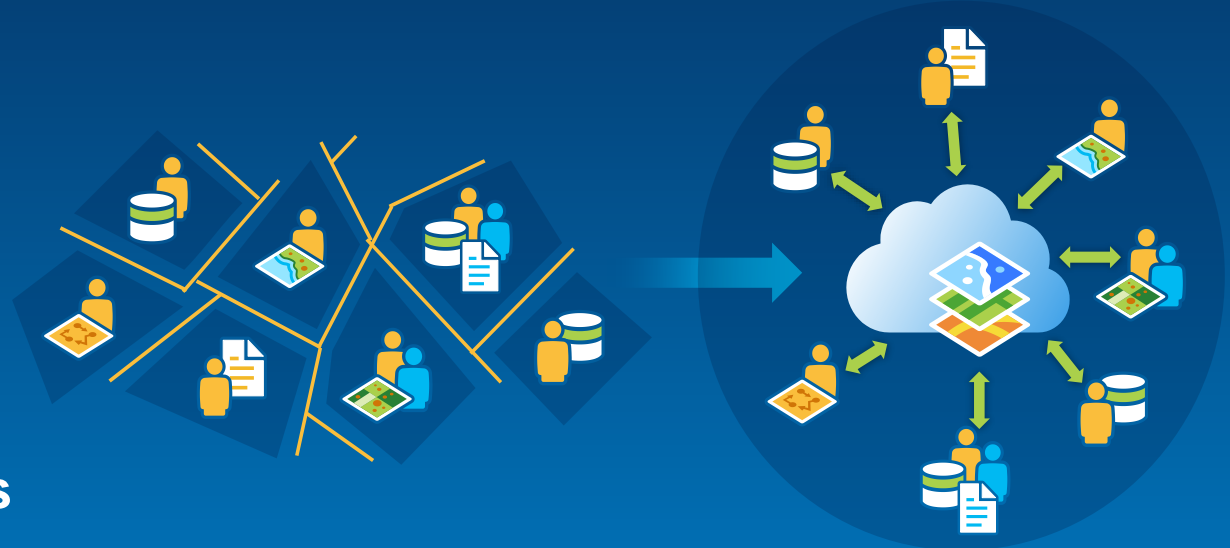
Organized Crime

Adversaries

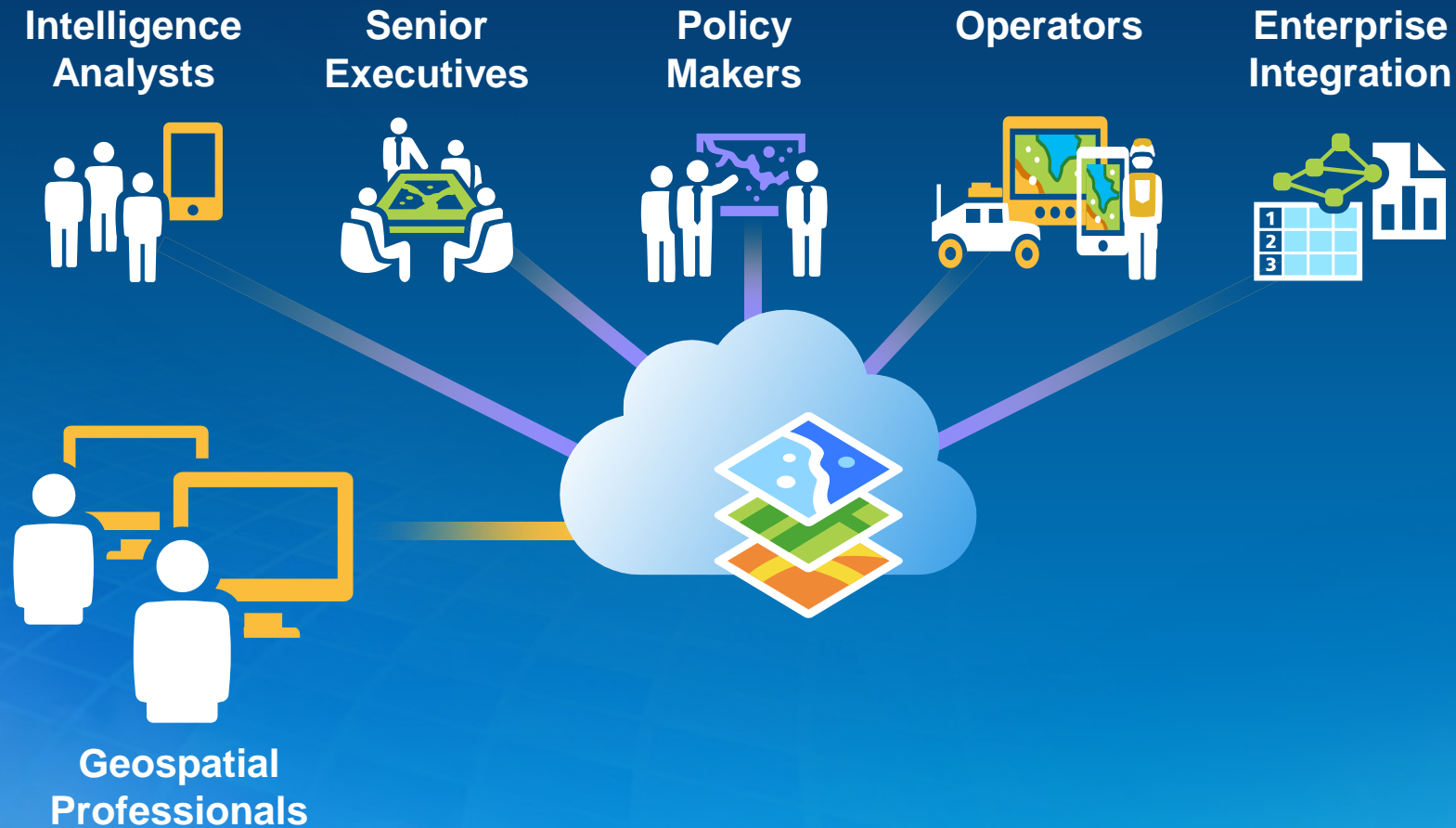
... And Impacts National Security

Intelligence Community Challenges

- Security 
- Discovery 
- Collaboration 
- Dissemination 
- Multi-INT Fusion 
- Requirement for Deeper Analytics



A Geospatial Platform will Support the Intel Community



Making GEOINT Available Across the Community

Web GIS – Environment for Integration

Simple
Integrated
Open



For Mapping, Analyzing, and Managing Geographic Information

Accessible from Any Client

Simple
Integrated
Open



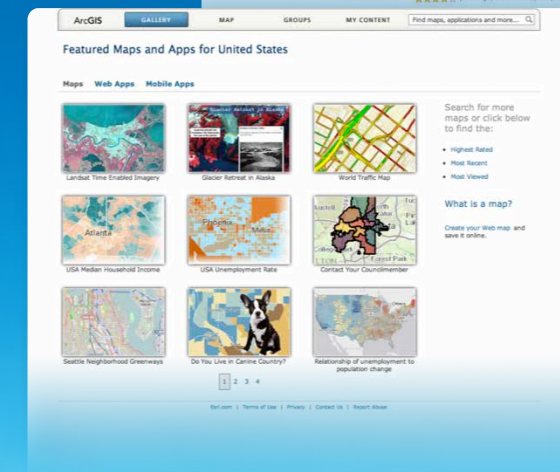
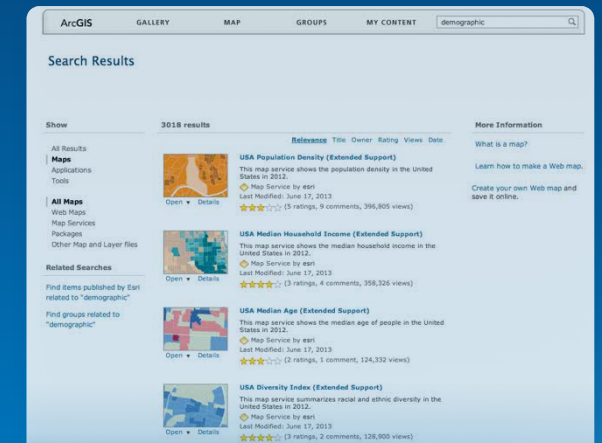
Powered by Services

Simple
Integrated
Open



Organizes Content and Manages Access

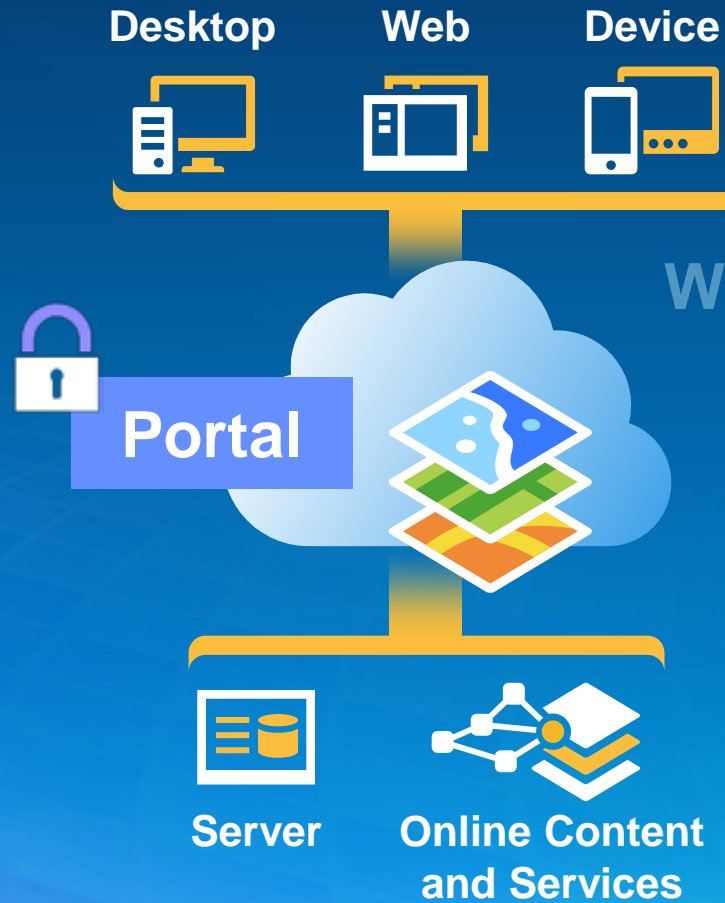
Simple
Integrated
Open



ArcGIS Is a Platform

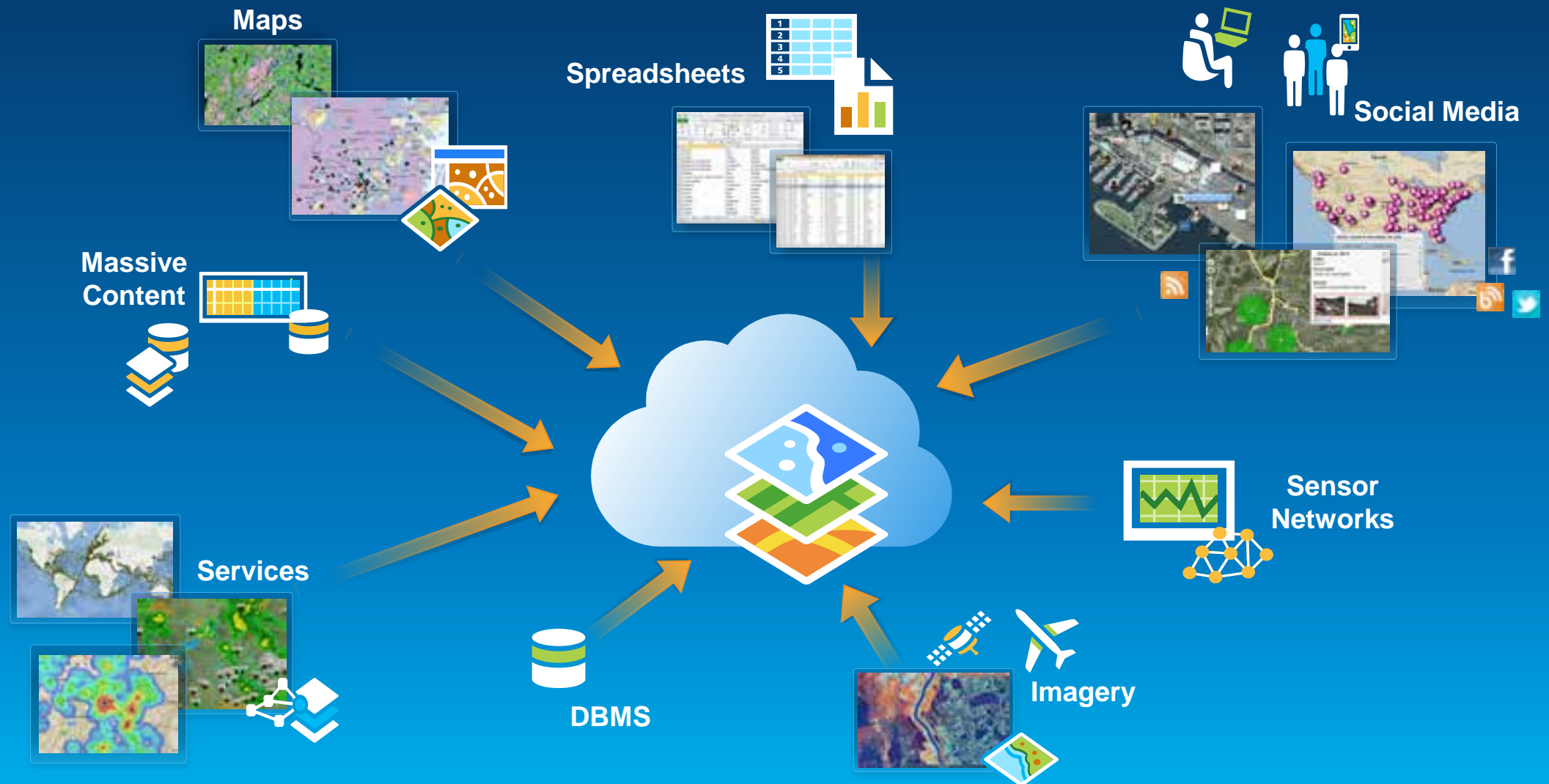
Enabling GIS Everywhere

Simple
Integrated
Open



Available in the Cloud . . .
. . . and On-Premises

Creating and Integrating All Types of Intelligence



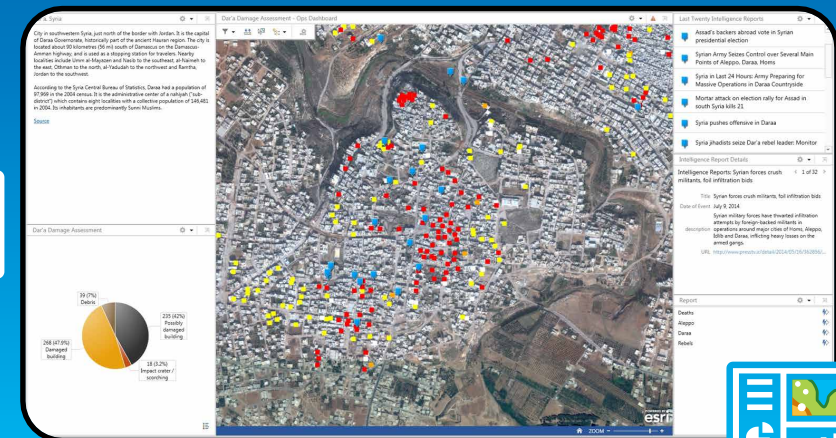
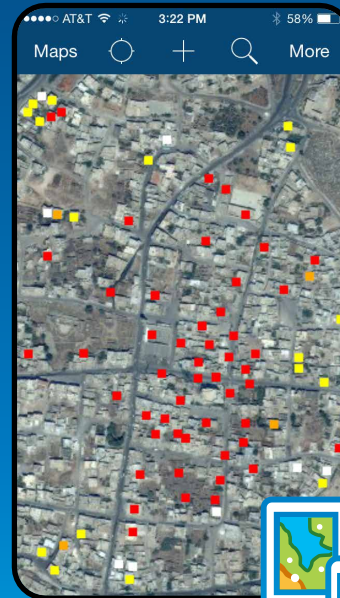
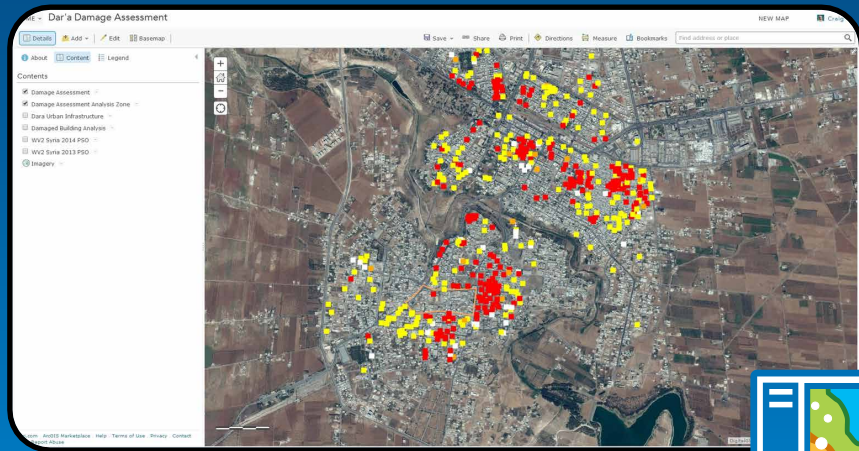
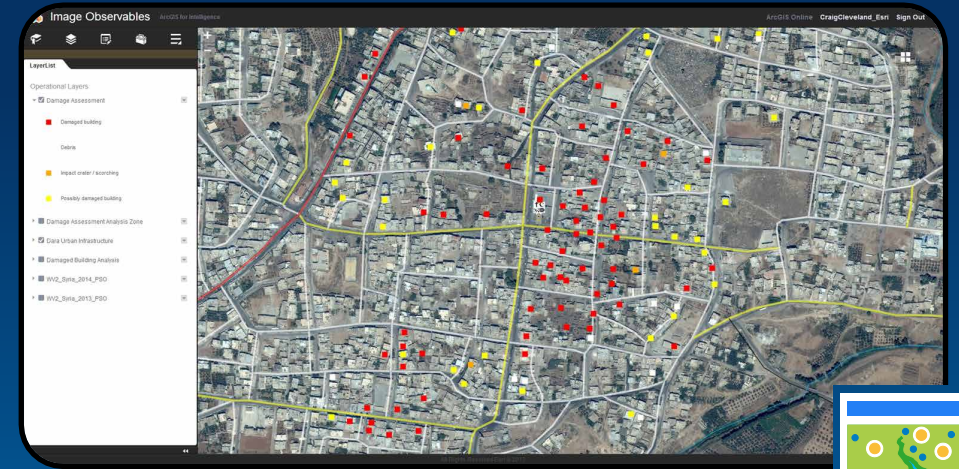
Providing a New Medium for GIS

Web GIS Dynamically Integrates Information



Combining and Analyzing Information

Web Maps are Building Blocks...

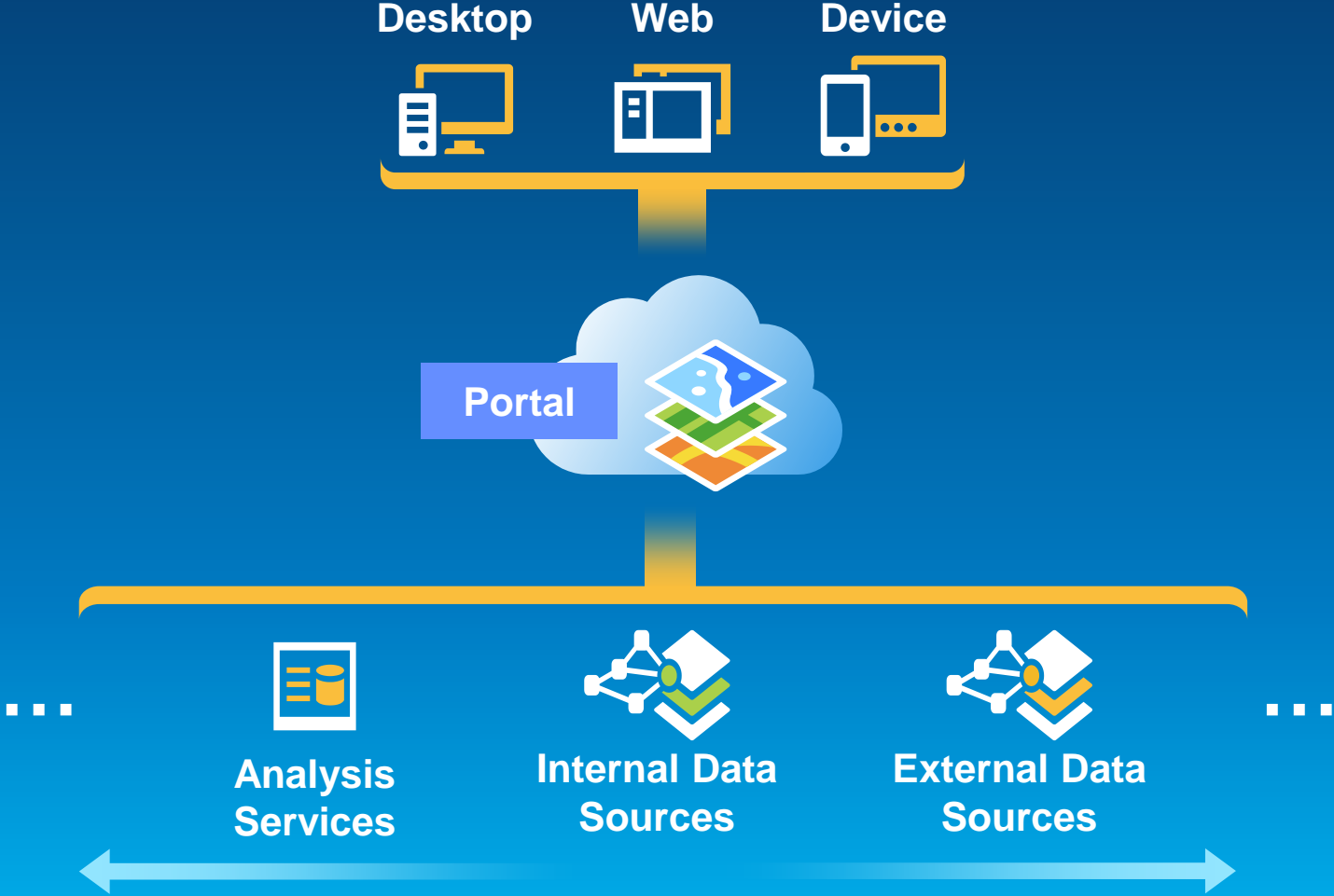


Portal for ArcGIS Demo

Renee Bernstein



A Platform for the IC



A Platform for the IC

All Source Analysts



Geospatial Analysts



HUMINT Analysts



Imagery Analysts



SIGINT Analysts



Executives



Enterprise Integration



Portal



Analysis Services



Internal Data Sources



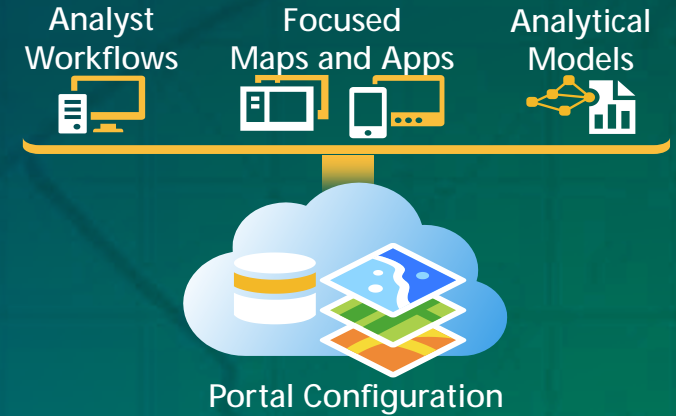
External Data Sources



What are Templates?

Fully documented and open source

- **Maps**
 - Useful examples of standard information products
 - MPK, Web Maps etc..
- **Tools**
 - Standalone Tools or scripts
- **Services**
 - Map, Image, Geoprocessing, Event Processing
- **Application Configurations**



**Templates are not new technology!
They build on what you already have and use.**

The Tradecraft Demo

Craig Cleveland

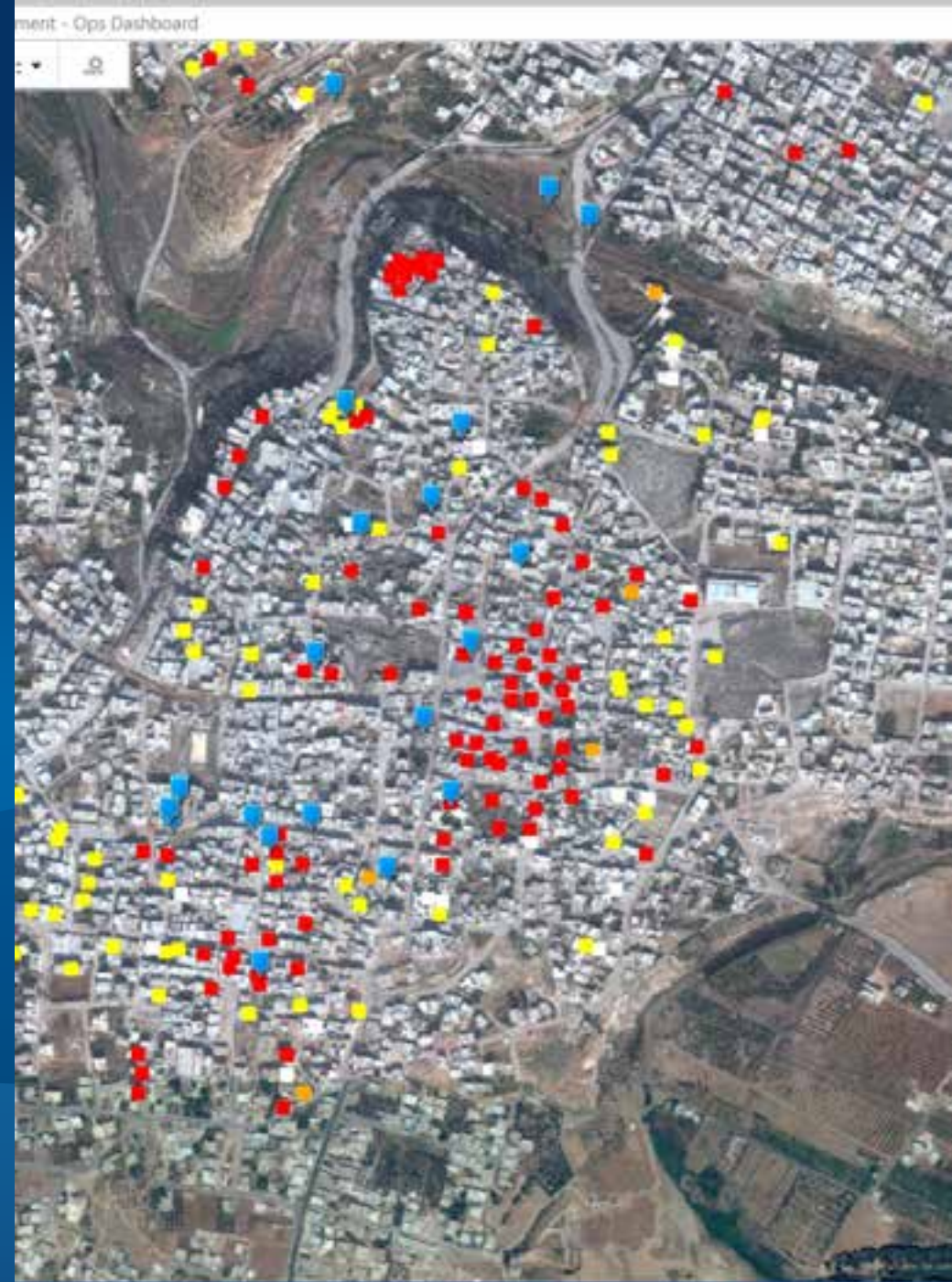


Image Observables

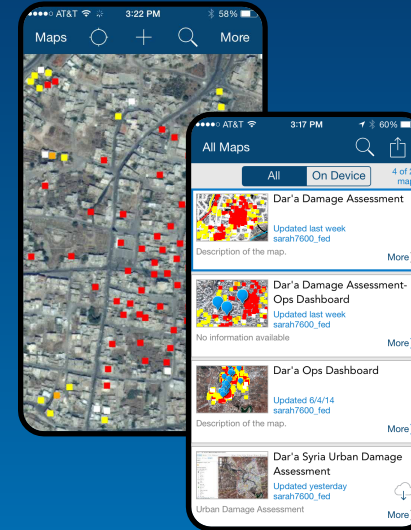


Web App Builder

Mensurate and digitize imagery observations



Collector



Collect and edit maps and data online or off

Create your own intuitive, fast and beautiful web apps

No coding required...

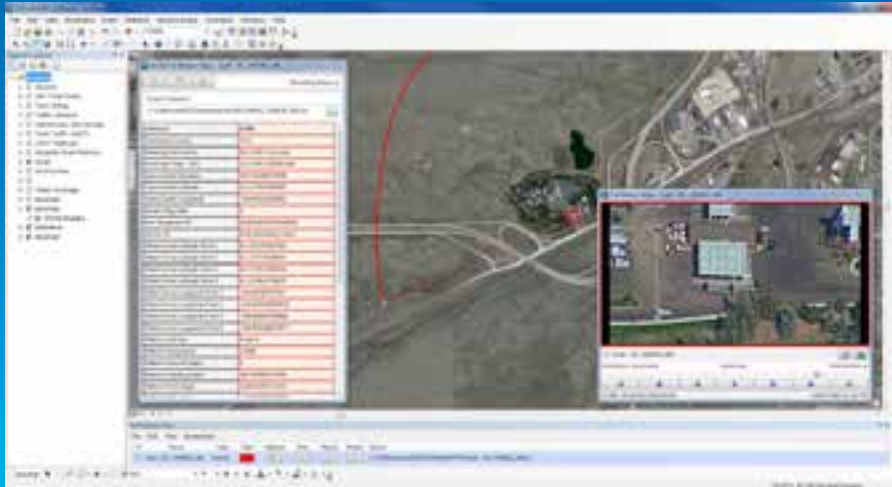
GeoEvent Processor/Operations Dashboard



Dynamic data updates maps automatically

Create and share views with real-time data feeds

FMV

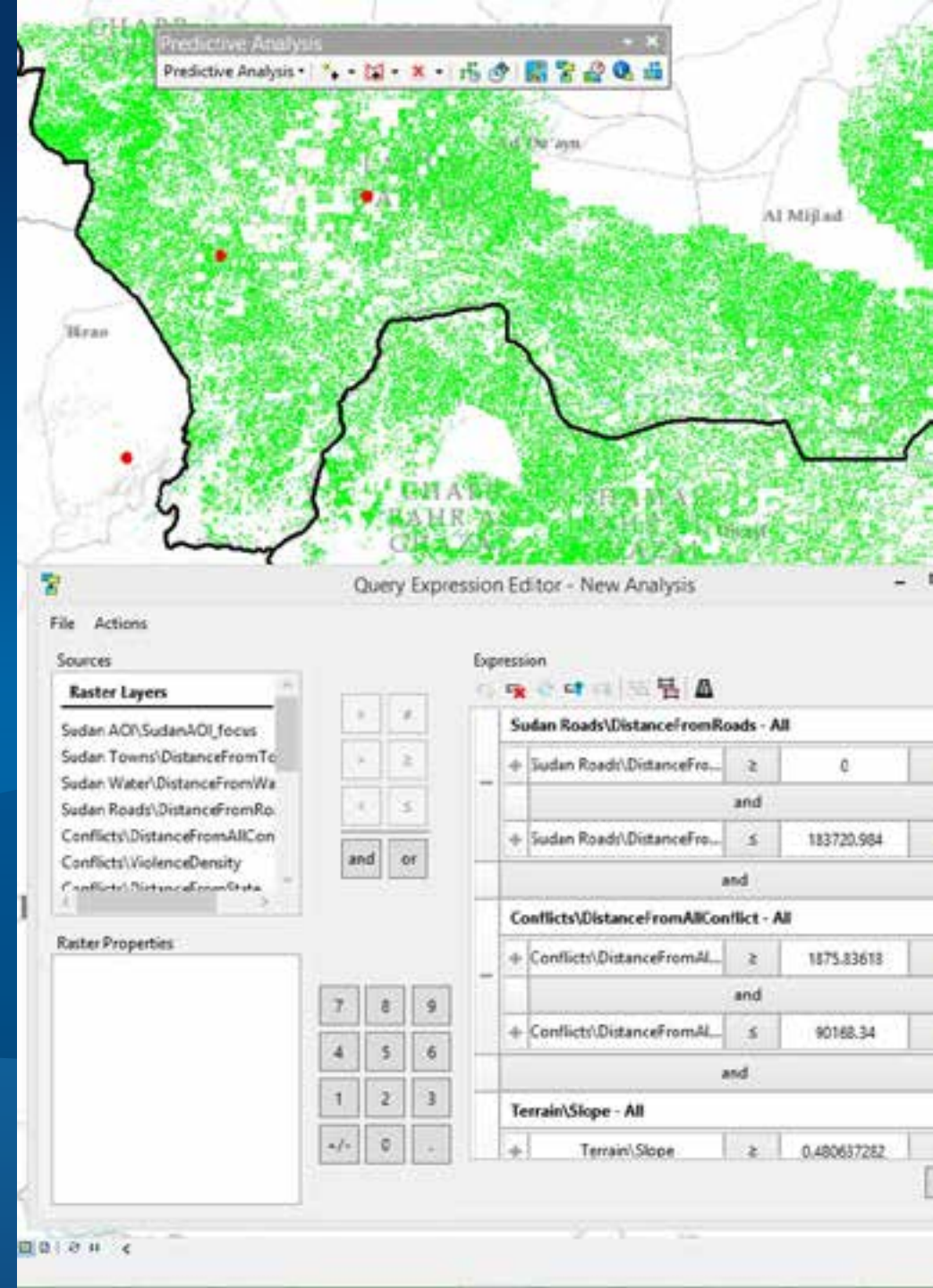


Extract geo-referenced images from video

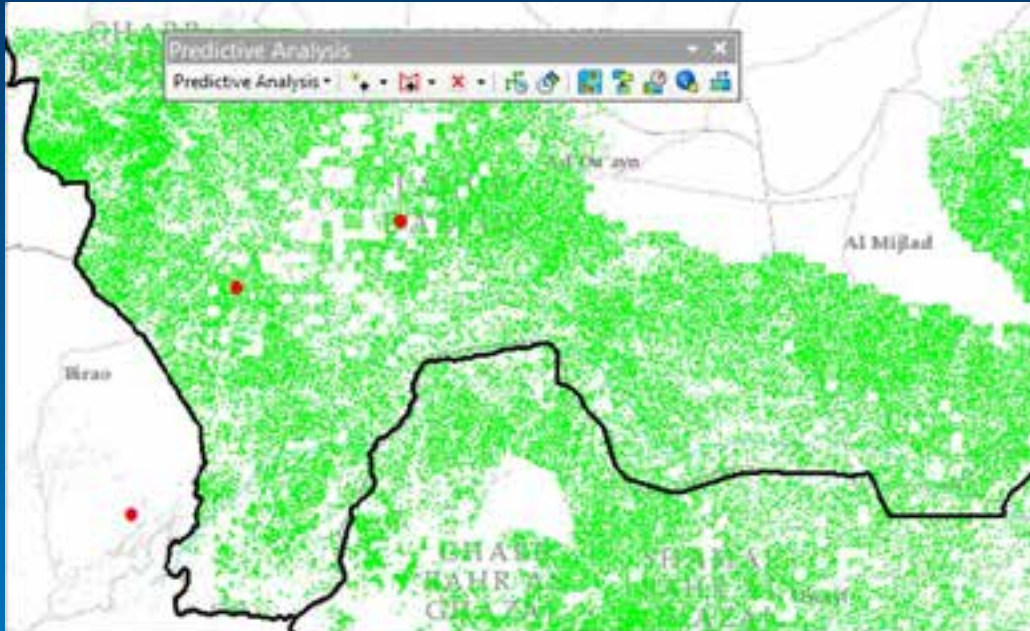
Digitize features directly in video to display in map

Applying the Science Demo

Renee Bernstein



Predictive Analysis Toolset



Build complex queries and speed models on rasters

Generate predictions on multiple sets of raster data

Information Sharing

Craig Cleveland



...wer plant is a 1,000-megawatts electric (MWe)
...built in cooperation with Russia based on a
...Under the terms of the contract, Russia will be
...g the plant for the first few years upon its
...ng full control to Iran, Russia agreed to supply all
...el for the Bushehr plant under IAEA safeguards
...an safely return all spent fuel to Russia.



Esri Maps for Office



Embed dynamic maps in PowerPoint

Map Journal



Create multimedia stories with text, graphics and maps

Map Tour

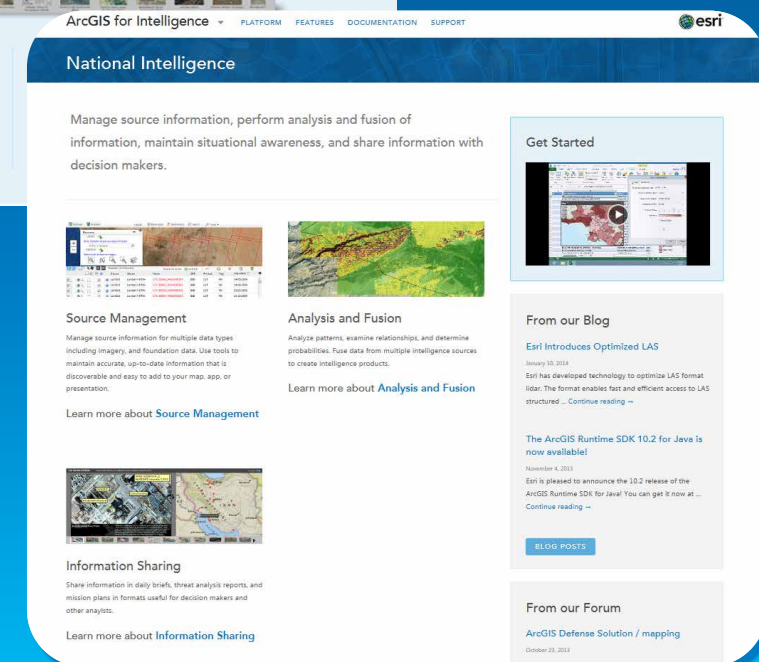
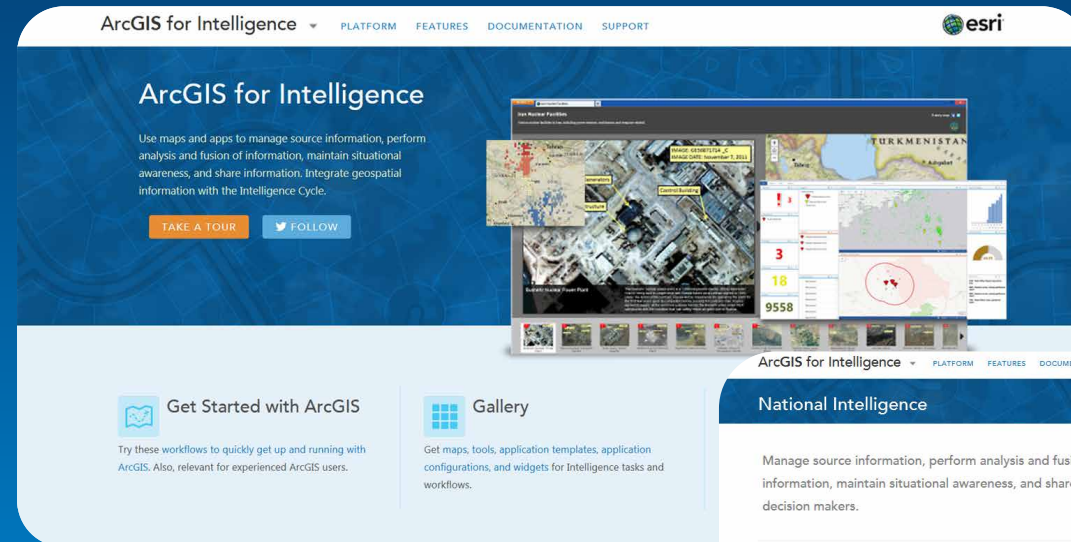


Use as visual and interactive briefing tools

Solutions for ArcGIS for Intelligence

Blogs, Online User Community, Desktop Templates and Web Apps

- Crisis Reporting
- Facility Reports
- Full Motion Video
- Geonames Locator
- Image Observables
- Incident Analysis
- Issue Reports
- Position Analysis
- Visibility and Range



GitHub: <http://esri.github.io/#Intelligence>

ArcGIS Solutions: <http://solutions.arcgis.com/intelligence>

Thank you...

- **Please fill out the session survey:**

Offering ID: 1122

Online – www.esri.com/ucsessionsurveys

Paper – pick up and put in drop box

Related Technical Sessions

- **ArcGIS for Intelligence: Collaboration & Reporting Using Portal for ArcGIS**
 - Wednesday, 8:30 – 9:45 am, Omni Ballroom A/B
- **ArcGIS for Intelligence: How to Create Meaningful Map Products**
 - Wednesday, 10:15 – 11:30 am, Omni Ballroom A/B
- **Briefing in a Disconnected Environment (Briefing Book)**
 - Wednesday, 4:30 – 5 pm, Demo Theater, Defense & Intel – National Security Showcase Exhibit Hall D
- **FMV**
 - Thursday, 10:30 – 11 am, Demo Theater, Imagery Island Exhibit Hall C
- **ArcGIS Predictive Analysis Tools**
 - Tuesday, 2:30 – 3 pm, Demo Theater, Defense & Intel – National Security Showcase Exhibit Hall D
 - Wednesday, 2:30 – 3 pm, Demo Theater, Defense & Intel – National Security Showcase Exhibit Hall D



Understanding our world.