



Geospatially Enabling the Intelligence Collector

Natalie Feuerstein | Anneley McMillan | Phil Suarez

Technical Workshop

Goals for Workshop

- **Discuss Data Collection**
- **Who can be an Intelligence Collector**
- **Demonstrations**
- **Enterprise Synchronization**
- **Live Demo Scenario for IDP**

Data Collection

Timely, Relevant, and Accurate



Social

Economic

Points

Environment

Cultural

Lines

Religion

Health

Polygons

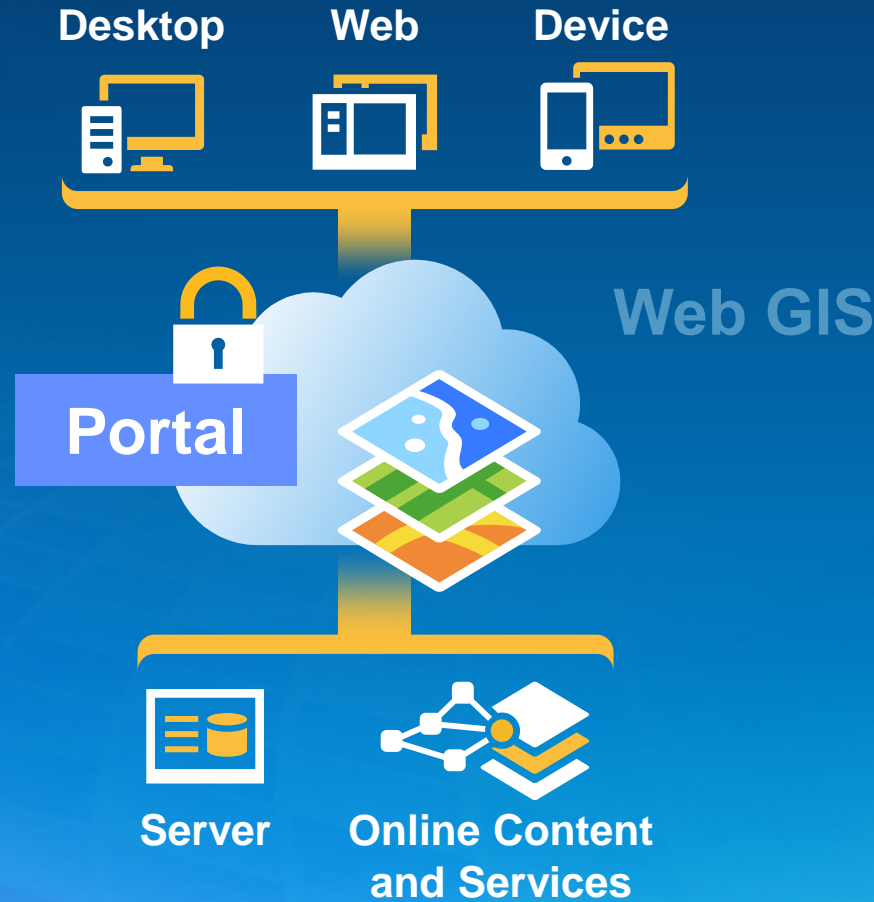
Sentiment

... continuous process

ArcGIS Is a Platform

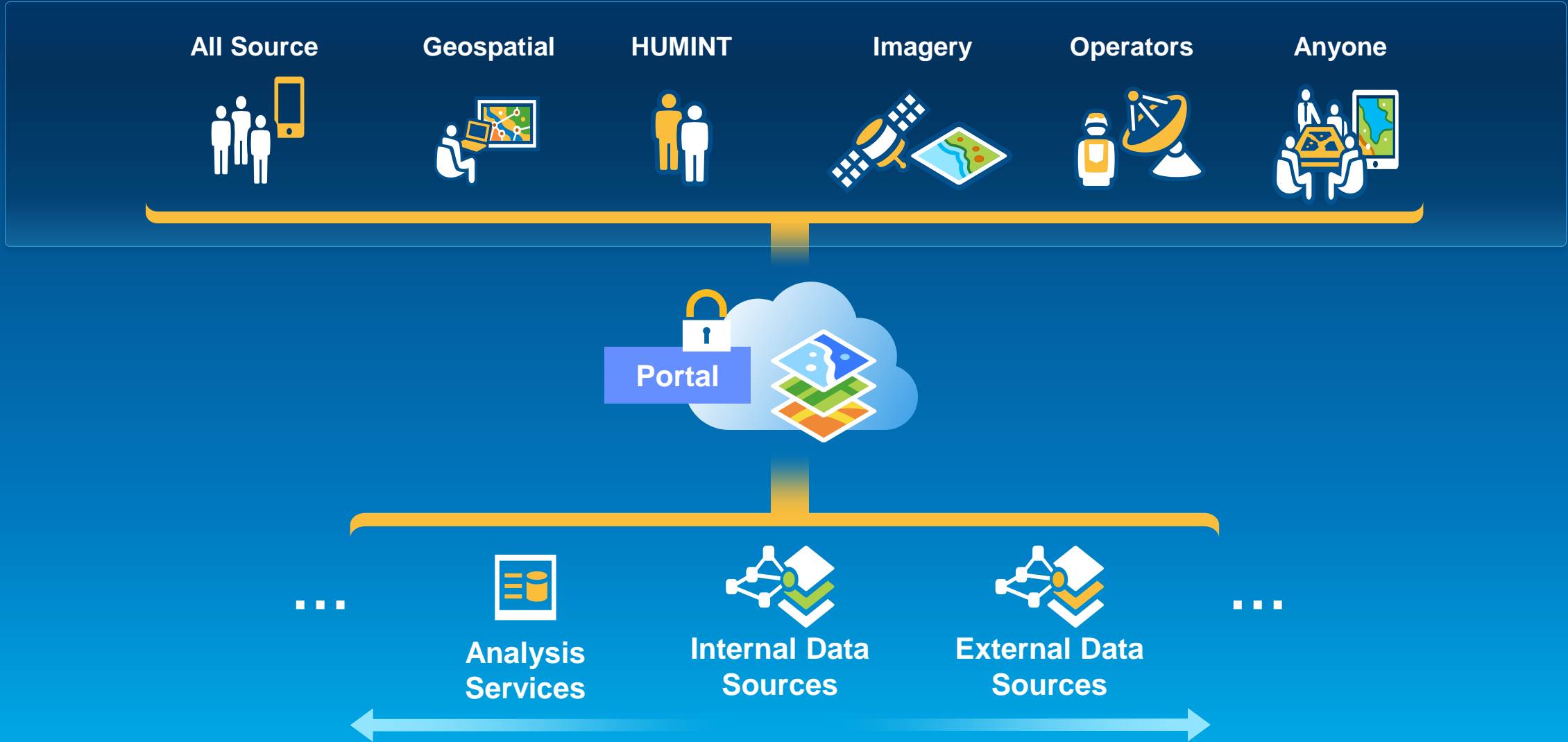
Supports Enterprise Operations

Simple
Integrated
Open



*Available in the Cloud . . .
. . . and On-Premises*

Who Is A Intelligence Collector?



Web GIS Dynamically Integrates Information

From Collector to Enterprise and Analysis



Helping to Discover and Understand Relationships

Geospatially Enabling the
Intelligence Collector

Technology Components



GEOFORM

Organize Data Collection

Web Mapping Application

Form-based Data Editing

Improve Data Quality

Powered by WebMap

Editable Feature Service

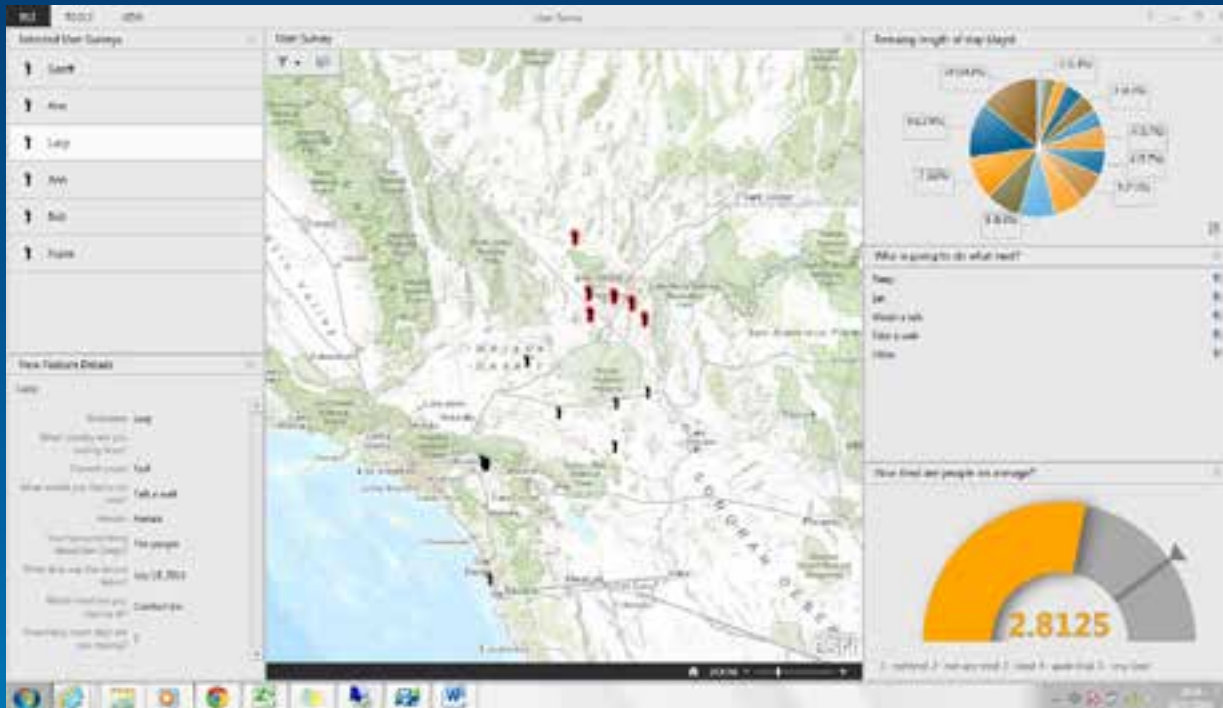
The screenshot displays a web form titled "User Survey" with three main sections:

- 1. Enter Information:** Contains several input fields: "Name" (text), "Email" (text), "What would you like to do next?" (dropdown menu), "What is your gender?" (radio buttons for Male and Female), "What is your favorite thing about San Diego?" (text), "When is the date?" (text), "What hotel are you staying at?" (dropdown menu), and "How many more days do you wish for?" (text). A "Cancel" button is located at the bottom of this section.
- 2. Select Location:** Includes a "Search" button, a "Coordinates" field, a "Find my location" button, and a map of San Diego with several black pins indicating selected locations. Below the map, the coordinates "Latitude: 32.7177, Longitude: -117.1612" are displayed.
- 3. Complete Form:** Features a "Submit" button and a "Cancel" button.

Spatially enable Information

Operations Dashboard for ArcGIS

GeoForm - User Survey Information



Dynamic Data Sources

Real-time Views

Charts, Gauges, Histograms, Statistical Context

Custom Widgets

Powered by Services

Comprehensive Understanding of the Environment

Analysis Web Application

Configured Apps for Analytical Workflows

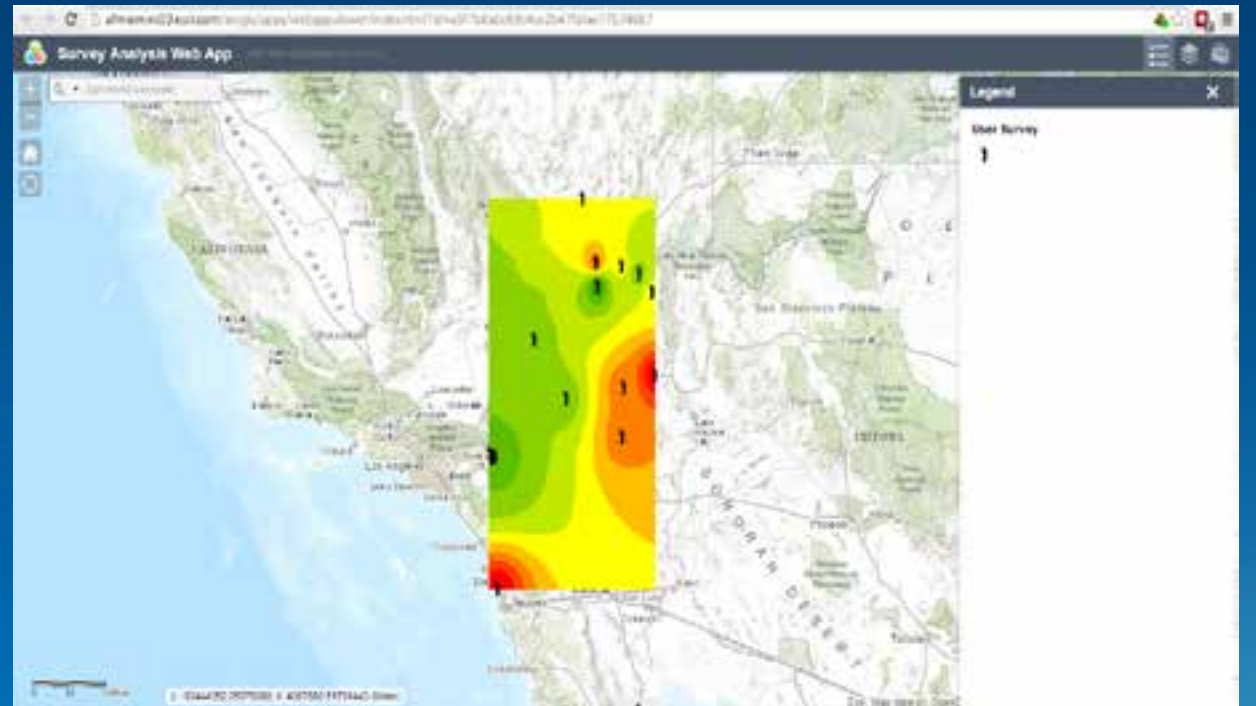
Browser based Application

Easily Configurable

Custom Analytical Tools

User-Defined Workflow

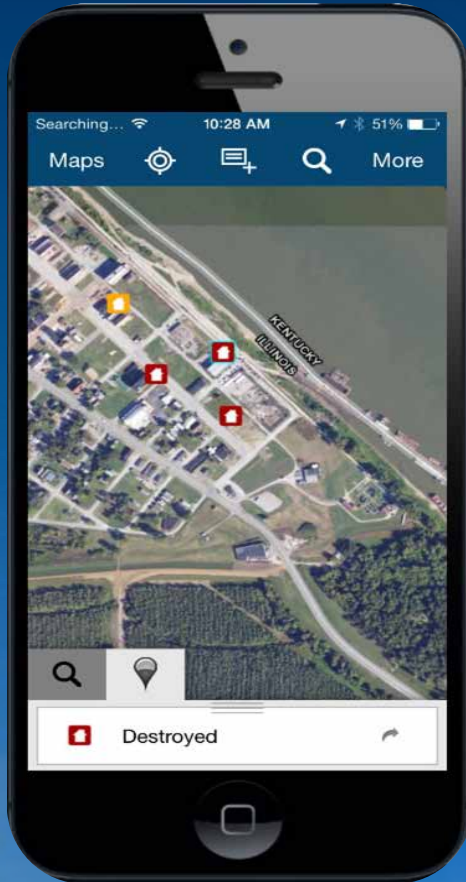
Powered by Services



Jumpstart the Analytical Workflow

Collector Application

Intended for Mobile Collection



iOS or Android

Configurable to workflow

Improve data quality with map-driven forms

Share captured photos and videos (Media)

Display data in Dashboards and Web Apps

Easily Synchronized with the Enterprise

Data Collection

Timely, Relevant, and Accurate



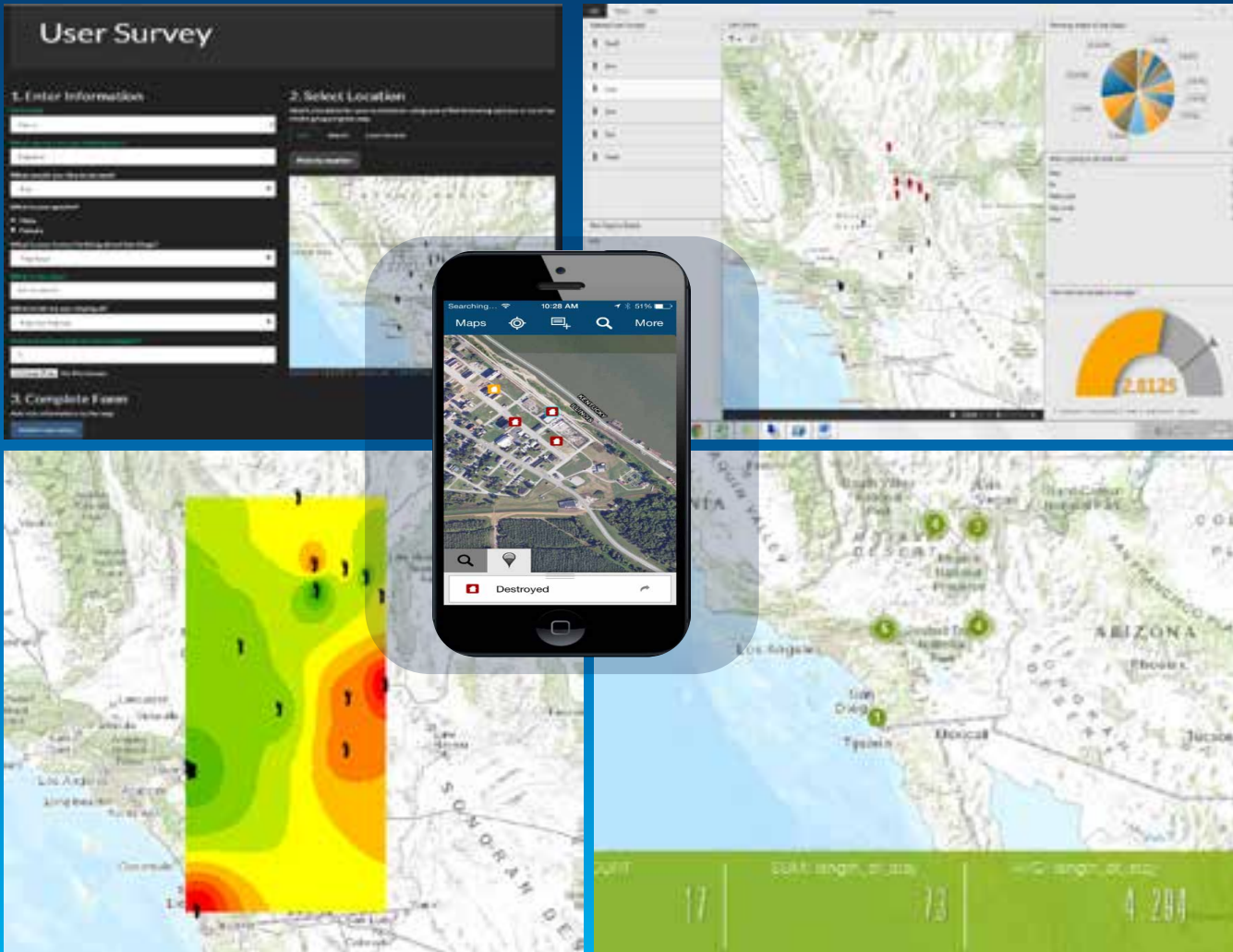
- 1 Collect Data - GeoForms
- 2 Analyze - Web Apps
- 3 Assess - Dashboard
- 4 Collect- Collector App

... continuous process

Integration across the workflow: IDP Scenario



Summary



- Ecosystem
- Easily configured
- Data input flexibility
- Dynamic environment
- Better situational awareness
- Better decision making in a more direct and timely manner
- Synchronizes operations

Enabling the Geospatial Intelligence Collector

Questions?

Thank you...

- **Please fill out the session survey:**

First Offering ID: 1128

Online – www.esri.com/ucsessionsurveys

Paper – pick up and put in drop box



Understanding our world.

Type Presentation Title Here