



Configuring the Live,Work, Locate Application

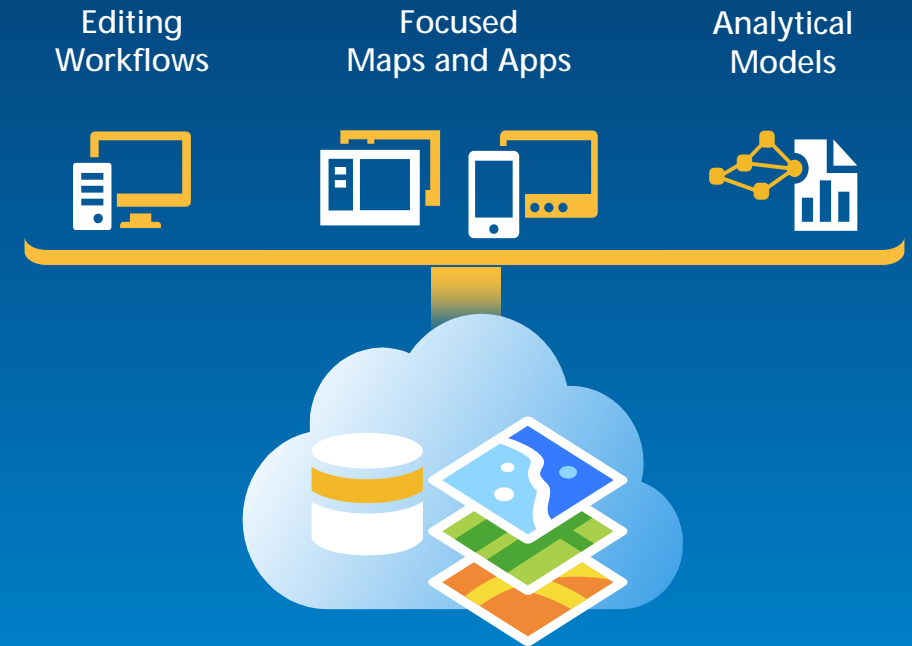
Nikki Golding

Demo Theater

ArcGIS for State Government

Esri's solution for state government customers

- Series of useful maps and apps focused on government work
 - Organized into modules
 - Extensible, configurable
 - Freely available and fully supported
 - A foundation for Partner solutions
- Community of users
 - Best Practices / Implementation Support
- Network of Esri Services and Partner offerings
 - Help users implement, sustain and enhance



.....Available on-premise or in the cloud

Live, Work, Locate

What is it?

- An application that can be used to explore amenities and services provided within a state in order to make a determination about re-location

- Live

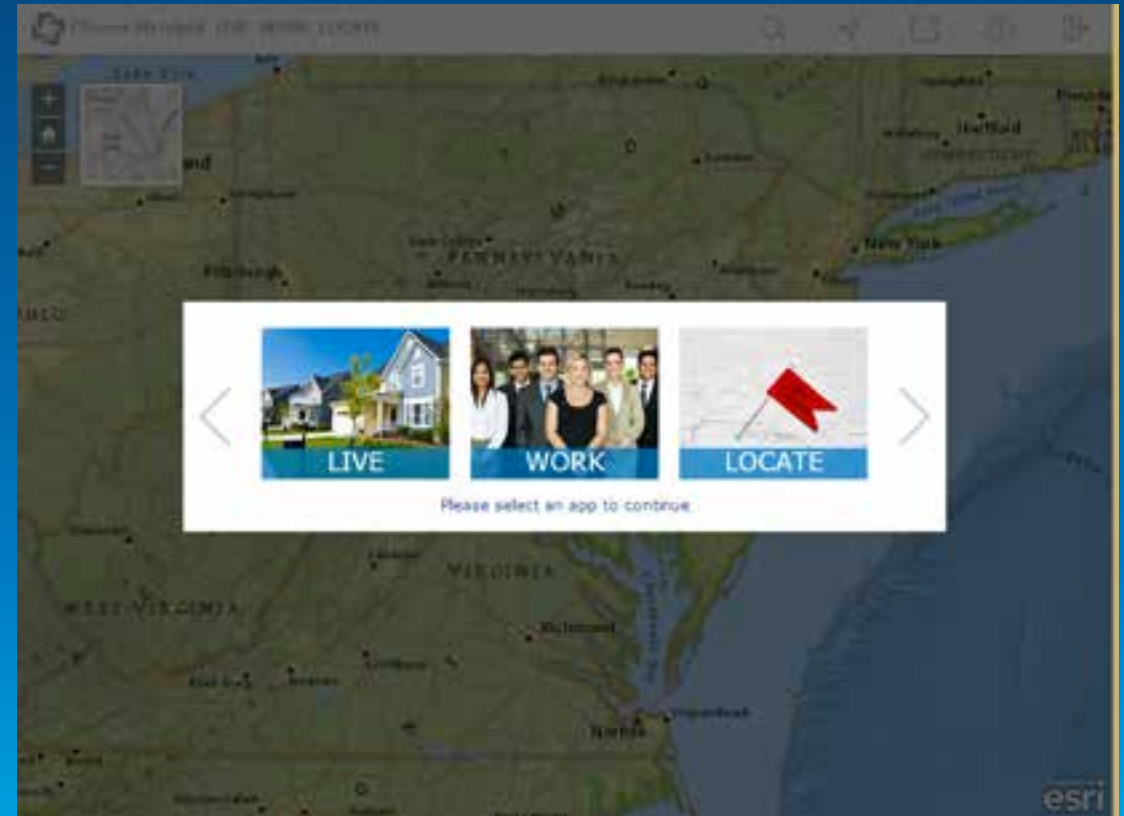
- Parks
- Schools
- Museums
- Cost of Living

- Work

- Mass Transit Stations
- Employers
- Income

- Locate

- Labor Force
- Business Tax
- Employment Rate

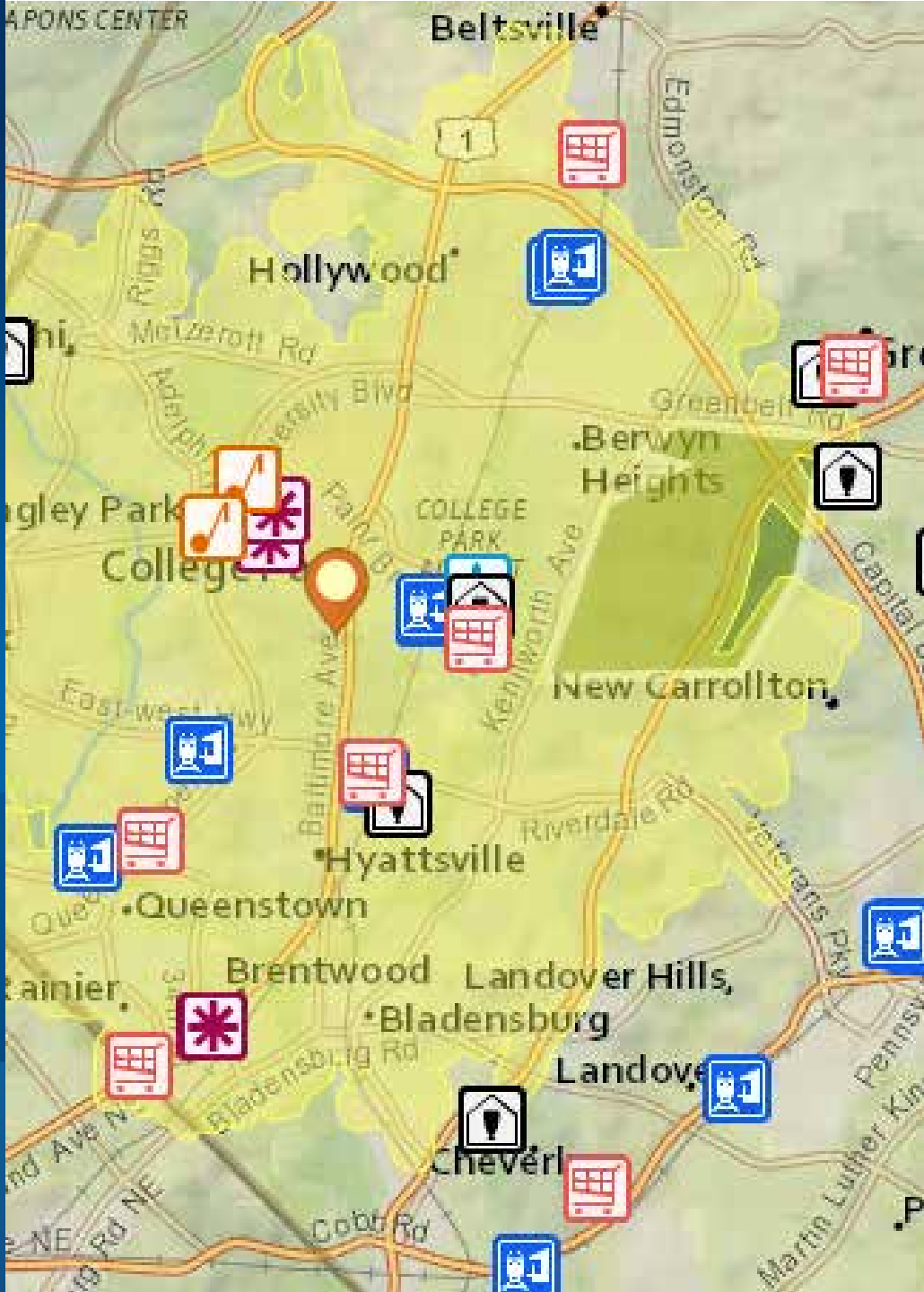


Live, Work, Locate

Technical Details

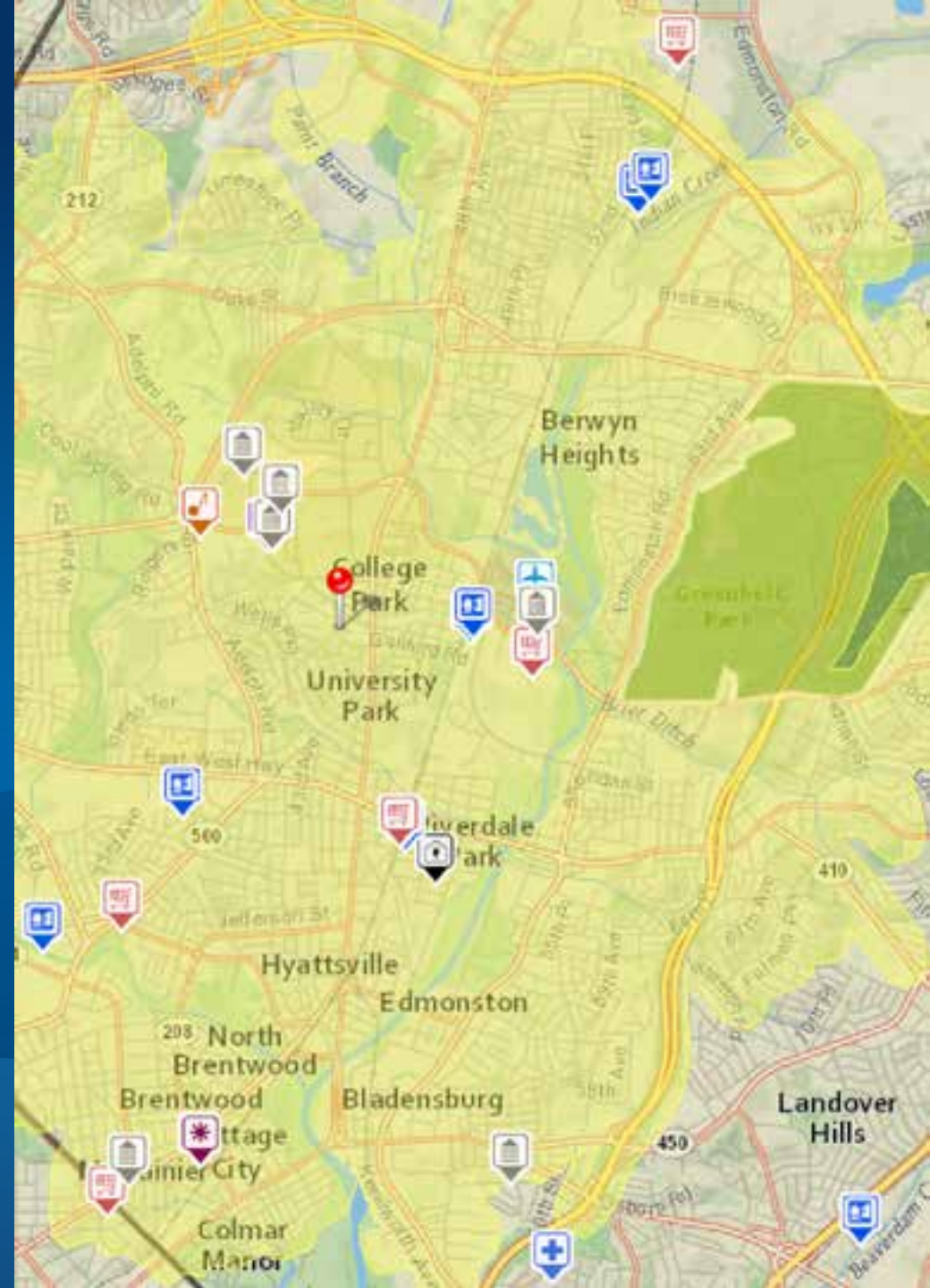
- Javascript application that can be used with the following browsers:
 - IE 8 - 11
 - Mozilla Firefox
 - Google Chrome
 - Apple Safari
- Optimized for desktop and tablet devices
- Configured to work with ArcGIS Server or ArcGIS Online or Hybrid

Demonstration



Demonstration

Configuration

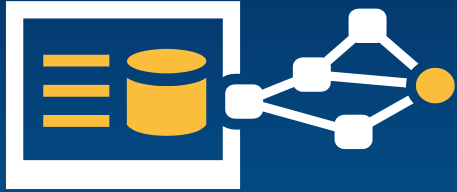


Tips or Takeaways

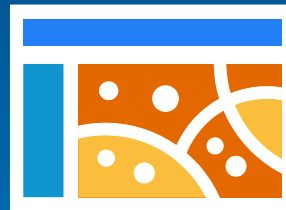
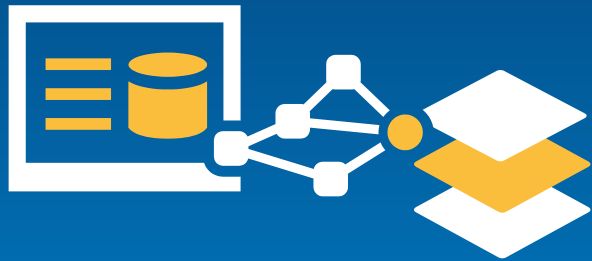
Configure Live, Work, Locate

- Application can be set up for one workflow
- Ensure Proxy has been set up correctly
- Verify field names specified in the config match the service (case matters)
- Don't use "localhost" to access your application
- Refer to documentation for more details

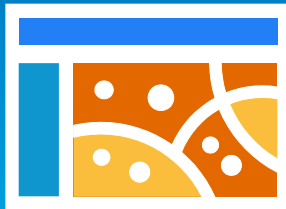
Configuration Options



Service Configuration



Hybrid Configuration



ArcGIS Online Configuration

More Information

Solution Site

<http://solutions.arcgis.com/state-government/help/live-work-locate/>

The screenshot shows the ArcGIS for State Government website. The header includes the product name and navigation links for Platform, Features, Documentation, and Support. The main heading is 'Live, Work, Locate' with sub-links for Home and Get Started. The 'Overview' section describes the application as a configuration of ArcGIS and a web browser application for exploring communities. It includes a map image showing a geographic area with various markers and a sidebar. Below the text are four buttons: 'WHAT YOU GET', 'REQUIREMENTS', 'WHAT'S NEW', and 'DOWNLOAD'. To the right, a 'You may be interested in' section lists related maps and apps, with a link to 'Incentive Zone'.

Thank you...



<http://solutions.arcgis.com/state-government>



<http://www.linkedin.com/groups?gid=5114903>



@ArcGISStateGov



<http://esri.github.com>

Please fill out the session survey:

Offering ID: 1657

Online – www.esri.com/ucsessionsurveys



Understanding our world.