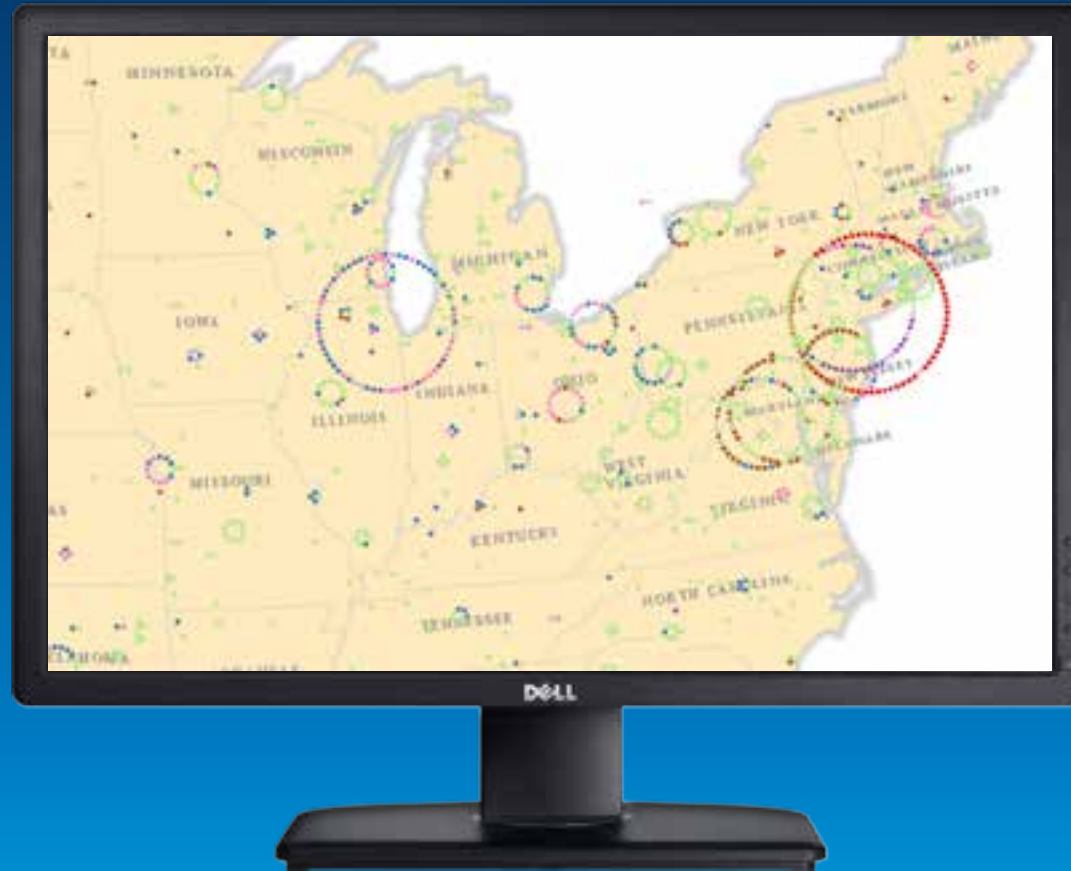


Linda Beale, Spatial Analyst, Esri



**Exploring spatial and temporal patterns
of aviation related wildlife strikes**

Case Study: USA historical wildlife
strikes



This got me thinking...

- **Bird strikes have been increasing since 1990**
 - Is it a problem across the whole country?
- **Civil aviation experts have proposed that all airports should aim to meet a minimum threshold**
 - Are there locations requiring increased management?

Analysis of Wildlife Strikes

- **Bird strikes have been increasing since 1990**
 - There are spatial differences
- **Civil aviation experts have proposed that all airports should aim to meet a minimum threshold**
 - Reported strikes have increased but damaging strikes have decreased
 - Different management practices are required spatially and temporally

Aviation-related wildlife strikes in the USA: <http://bit.ly/1qykyLK>

Analysis case studies: <http://pro.arcgis.com/en/analysis/>

