



ArcGIS for INSPIRE – An Introduction

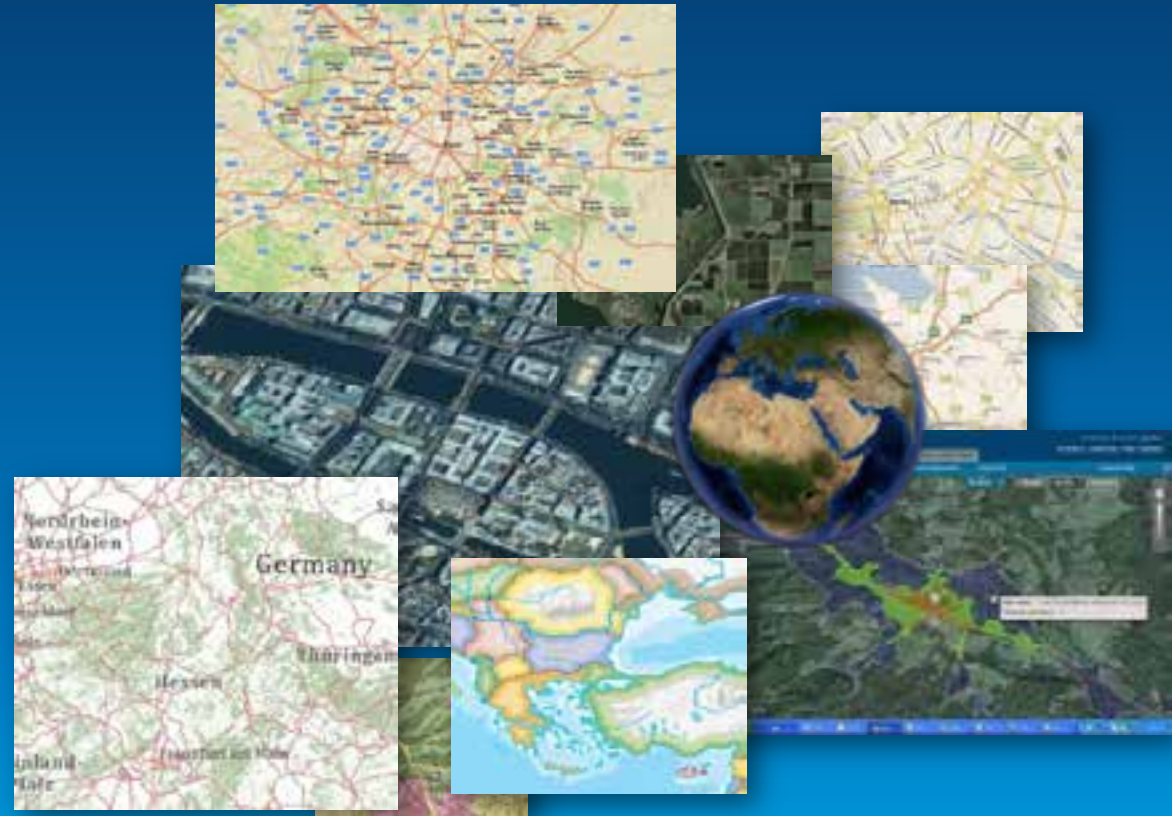
Roberto Lucchi

Demo Theater

INSPIRE Addresses Pan-European Issues

INSPIRE is a legal framework facilitating the access at spatial data

- Environmental
- Climate change
- Conservation
- Health
- Safety
- Transportation
- Urban planning
- ...and many more



<http://inspire.ec.europa.eu/>

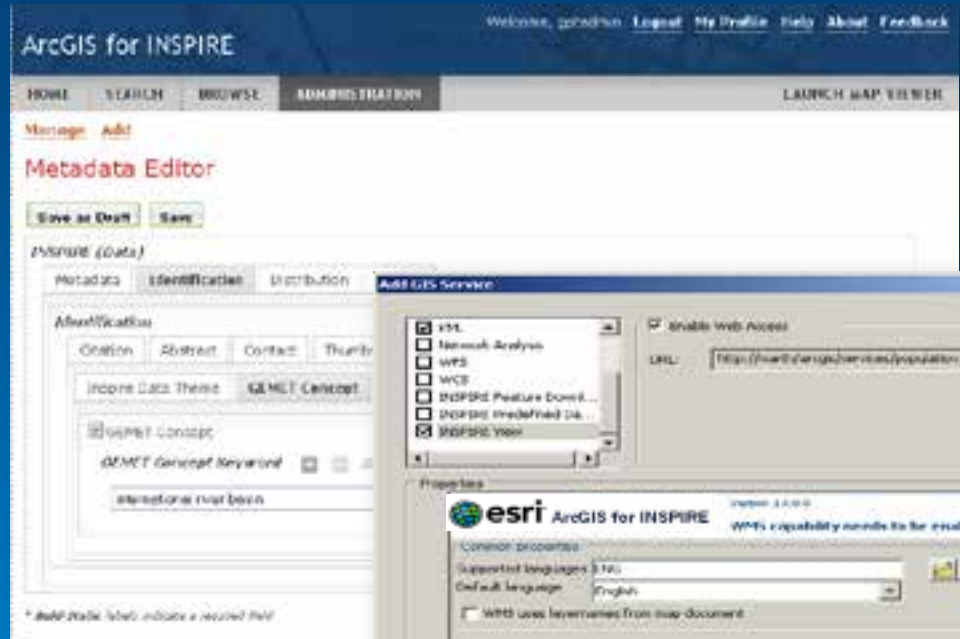
INSPIRE Results in a European Geospatial Infrastructure

- Authoritative **Data** and **Metadata**
- Online services
 - Discovery
 - View
 - Download



ArcGIS for INSPIRE

Enabling you to achieve **immediate** and long term INSPIRE goals



Immediate vs long term needs

Multiple options and implementation paths

- Discovery
 - OGC CSW 2.0.2 ISO AP
- View
 - OGC WMS, WMTS
- Download
 - OGC WFS 2.0.0
 - ATOM + OpenSearch

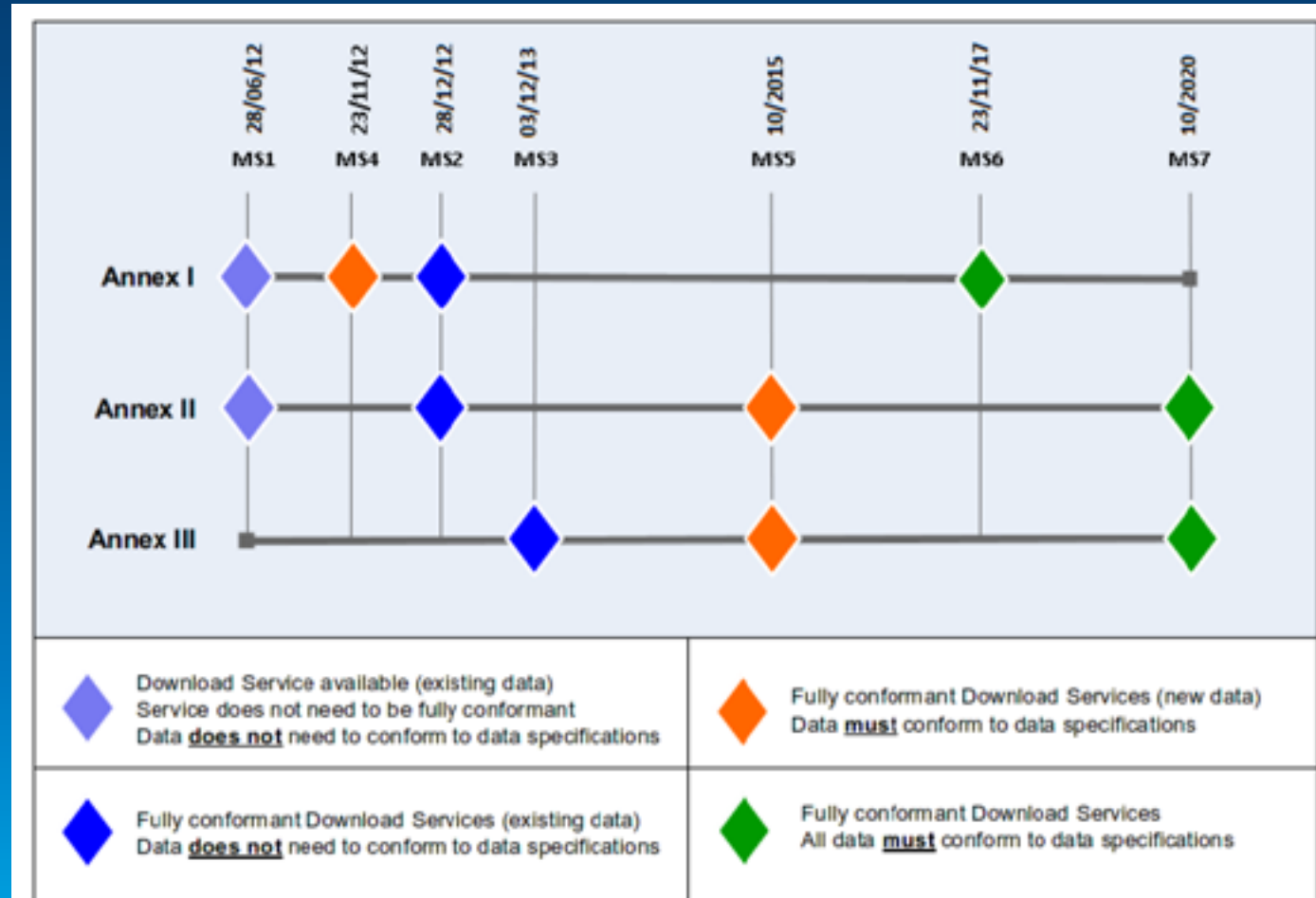
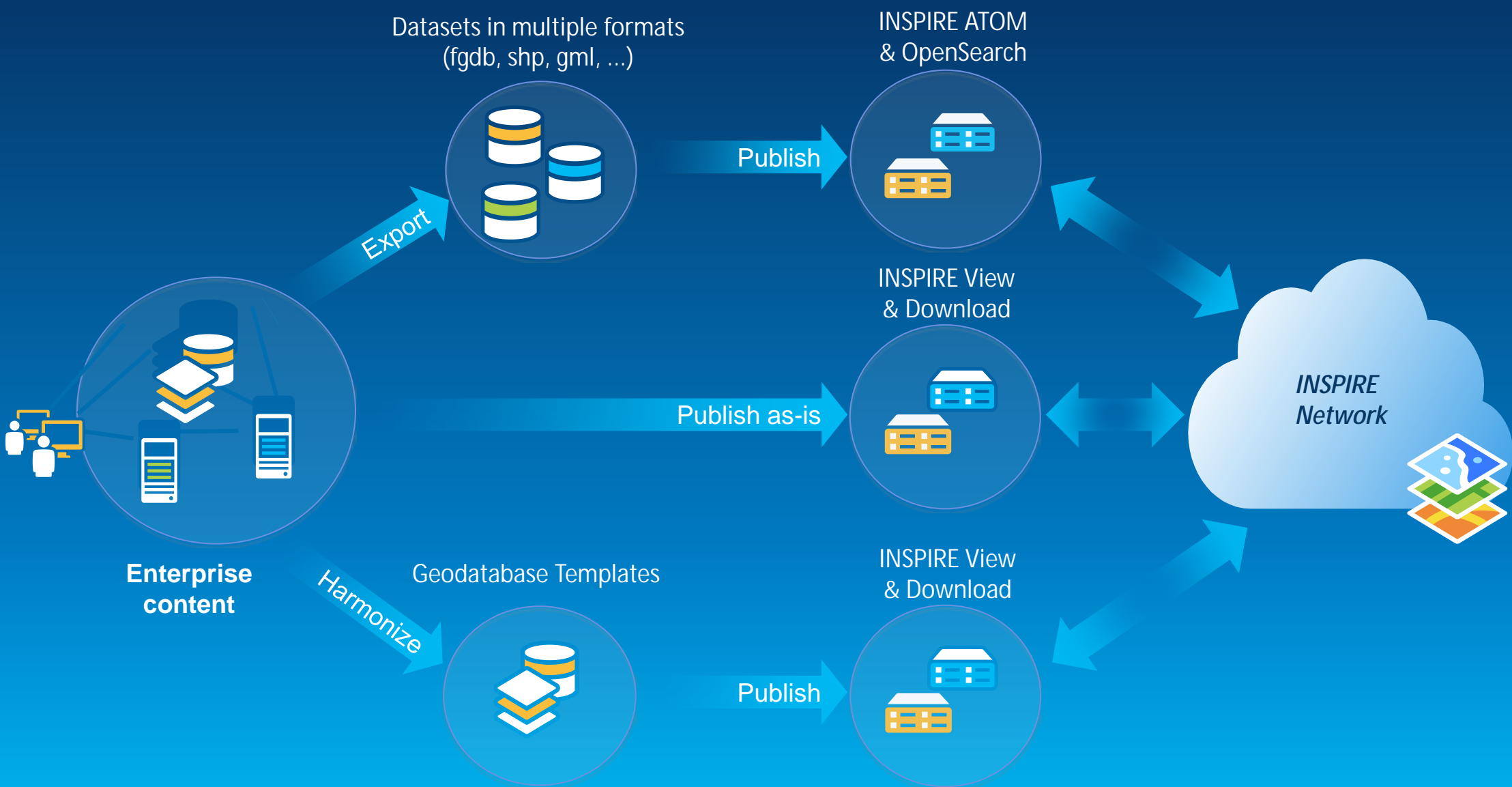


Figure 4: Illustration of Implementation Roadmap*

*Dates in this figure are accurate at the time of publication. For definitive dates refer to the roadmap published on the INSPIRE website: (<http://inspire.jrc.ec.europa.eu/index.cfm/pageid/44>)

ArcGIS for INSPIRE Implementation Patterns

From basic to full implementation



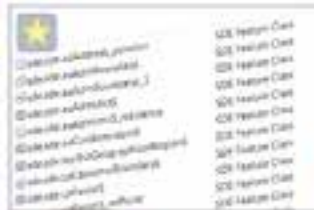
Annex I	Annex II	Annex III
Coordinate Reference System Geographical Grid System Geographical Names Administrative Units Addresses Cadastral Parcels Transport Networks Hydrography Protected Sites	Land Cover Geology Elevation Orthoimagery	Statistical Units Buildings Soil Land Use Human Health and Safety Utility and Governmental Services Environmental Monitoring Facilities Production and Industrial Facilities Agricultural and Aquacultural Facilities Population Distribution - Demography Area Managements/Restriction/Regulation Zones and Reporting Units Natural Risk Zones Atmospheric Conditions Meteorological Geographical Features Oceanographic Geographical Features Sea Regions Bio-geographical Regions Habitats and Biotopes Species Distribution Energy Resources, Mineral Resources

**ArcGIS for INSPIRE supports
all themes**

Annex II and III defined in Feb 2014

Geodatabase template

ArcGIS for INSPIRE Geodatabase Templates



ArcGIS for INSPIRE geodatabase templates implementing data model specifications

File Geodatabase by rlucci

Last Modified: May 16, 2014

(0 ratings, 10 views)

Facebook Twitter

OPEN

SHARE

EDIT

DELETE

MOVE

CHANGE OWNER

Description

The Infrastructure for Spatial Information in Europe (INSPIRE) is a directive passed by the European Commission, the executive body of the EU, to establish a European-wide spatial data infrastructure (SDI). An essential element of INSPIRE is the data model specification that provides a uniform way to view and download geographic datasets shared in the INSPIRE network by European Member States.

An essential element of [ArcGIS for INSPIRE](#) is the Enterprise Geodatabase (GDB) template, which implements the INSPIRE data models.

The geodatabase template is implementing the [INSPIRE Annex I data themes specifications](#):

- Coordinate reference systems
- Geographical grid systems
- Geographical names
- Administrative units
- Addresses
- Cadastral parcels
- Transport networks
- Hydrography
- Protected sites

Authoring INSPIRE Services



European Location Framework



<http://www.locationframework.eu/>

Thank you...

- **Please fill out the session survey (on paper)**
 - **Session id: 498**



Understanding our world.