



# Esri Roads and Highways for Server: Event Editing on the Web

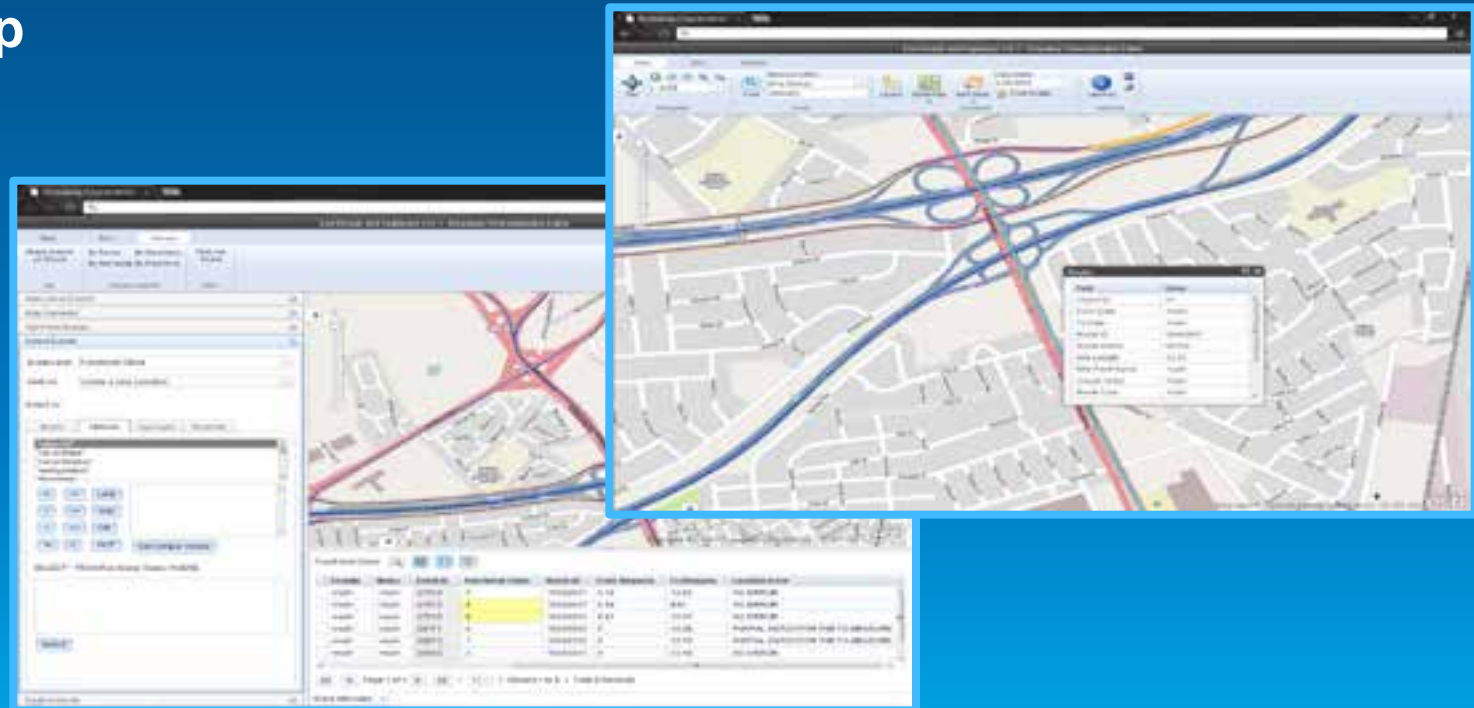
Tom Hill

Demo Theater

# Roadway Characteristics Editor

Web-based event editing

- Delivered with Roads and Highways for Server
- Built on Roads and Highways web services
- HTML5 / JavaScript app



# Web-based event editing

- **Editing**

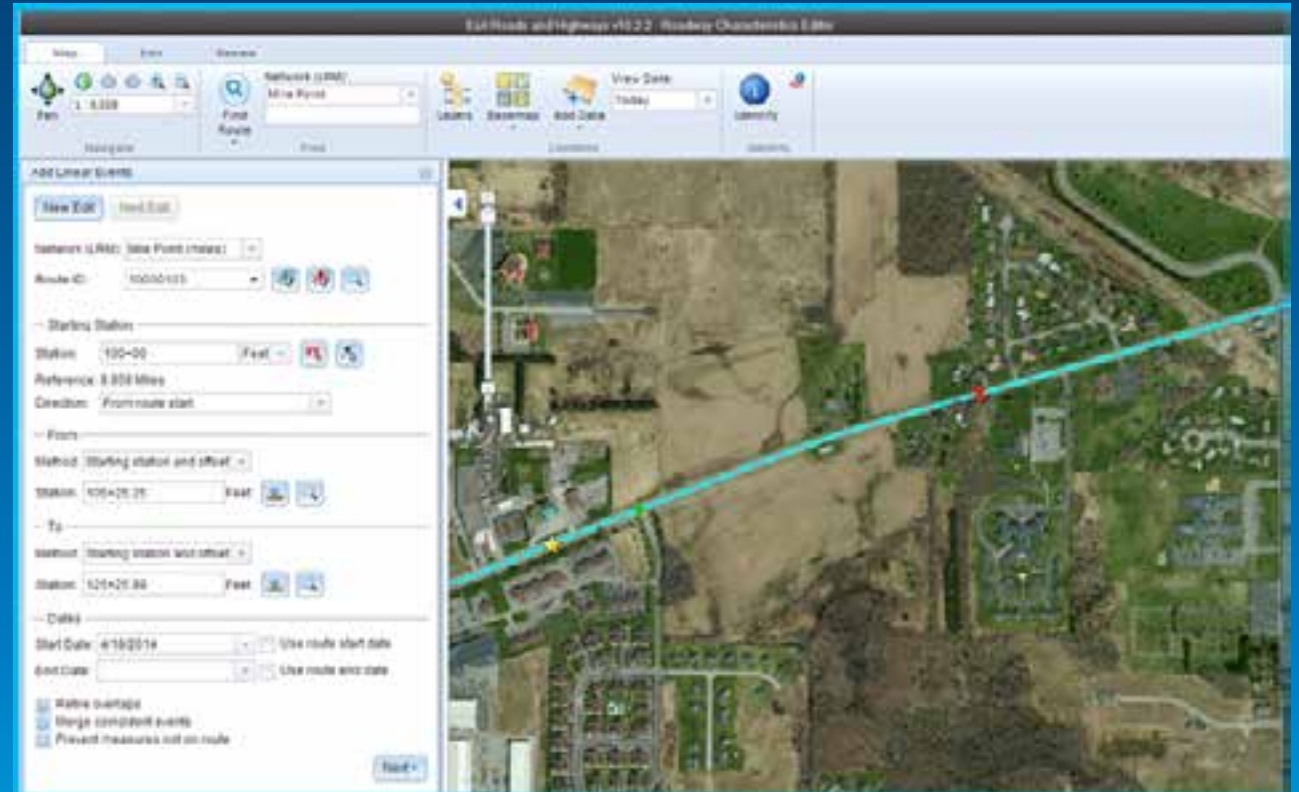
- Line events
- Points events
- Selection results
- Attribute set results

- **Selection**

- Select by route, attribute, geometry, proximity
- Single layer results or attribute sets

- **QC**

- Gaps, overlaps, invalid measures
- Data Reviewer batch checks



# Flexibility in event location referencing

- Route and measure



- Stationing



- Referent and offset

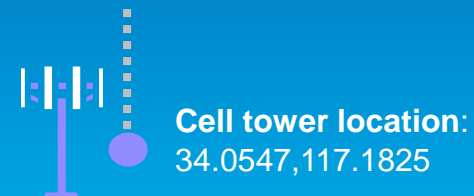
- Intersections
- Other events
- Point features



- Coordinates and offset

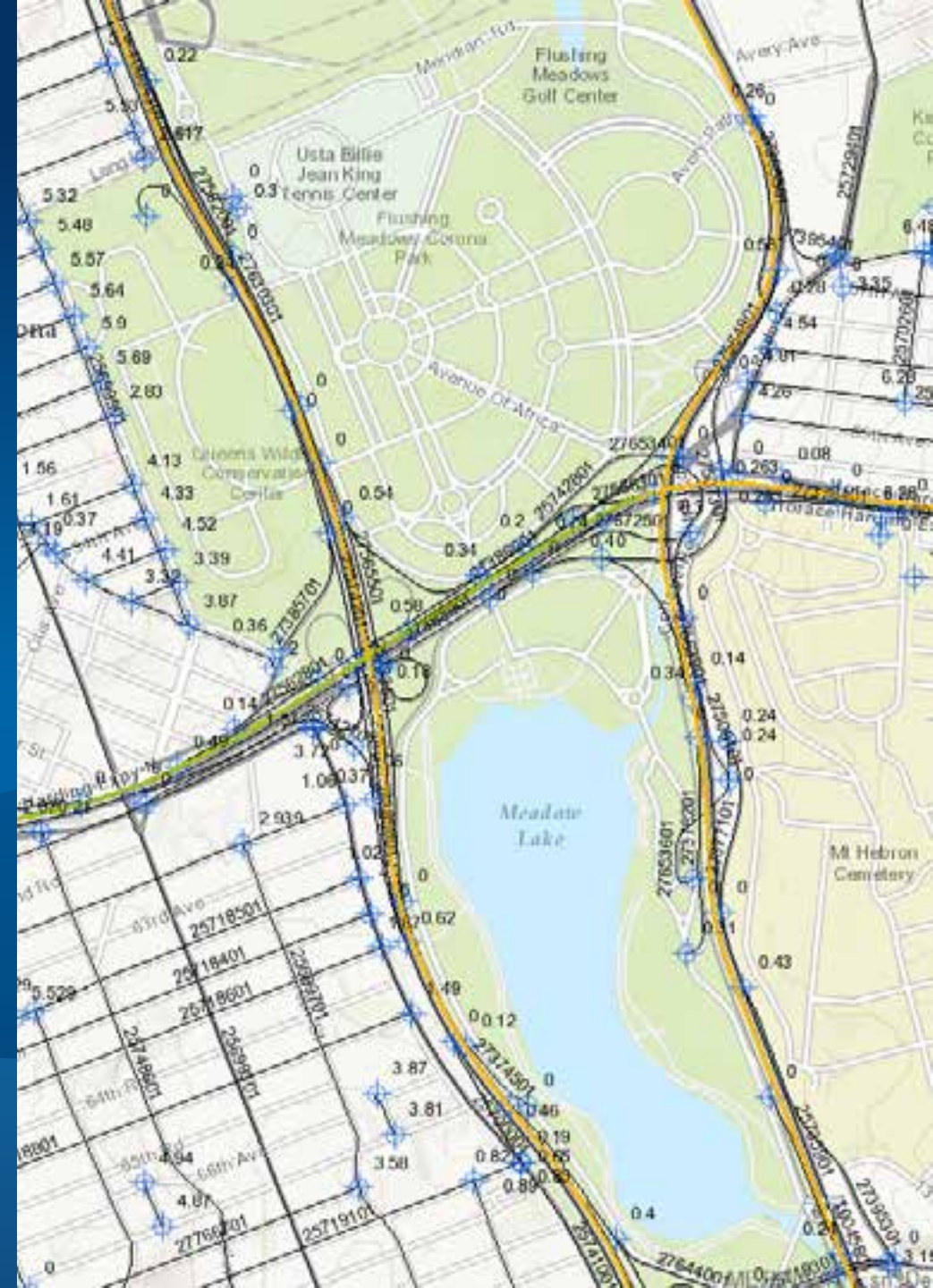


*...with intersection creation support*



Demo

# Roadway Characteristics Event Editing



# Thank you...

- Please fill out the session survey:

**Offering ID: 1523**

**Online – [www.esri.com/ucsessionsurveys](http://www.esri.com/ucsessionsurveys)**



Understanding our world.