



Managing and Editing Annotation

Wendy Harrison

Technical Workshop

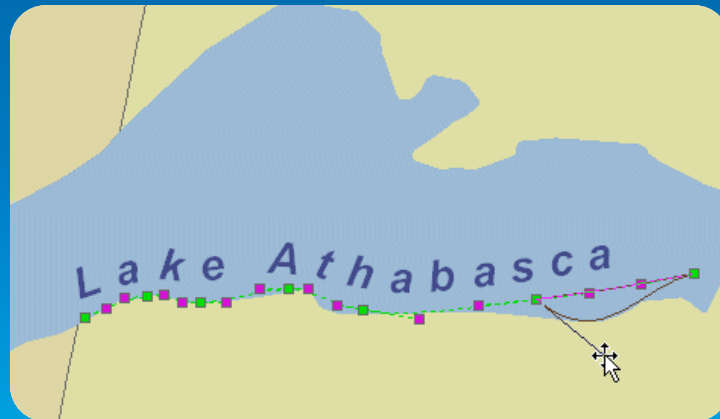
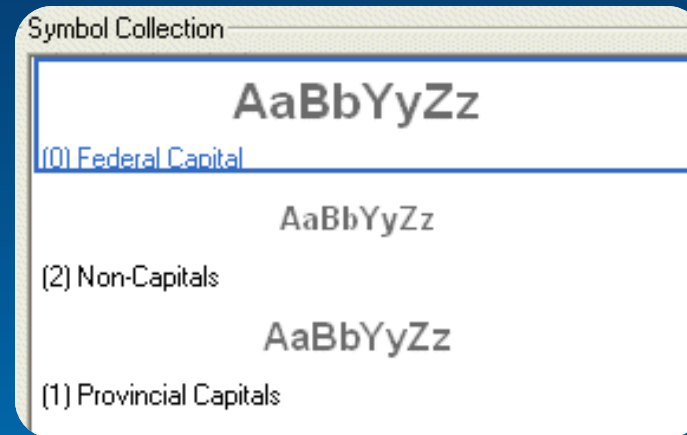
Text on a map

- Labels
- Map annotation
- Geodatabase annotation



What makes geodatabase annotation so special?

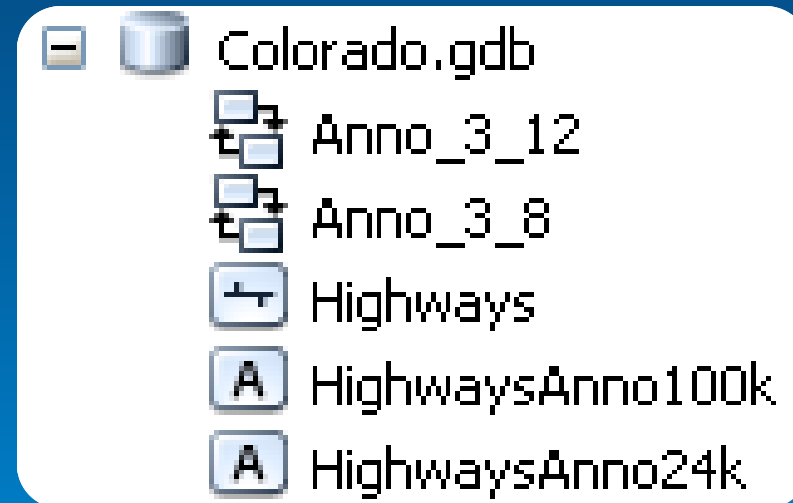
- **Easy to Manage**
 - **Symbol collection**
 - **Storage**
 - **Spatially indexed**



- **Easy to Edit**
 - **Dedicated tools**
 - **Feature templates**

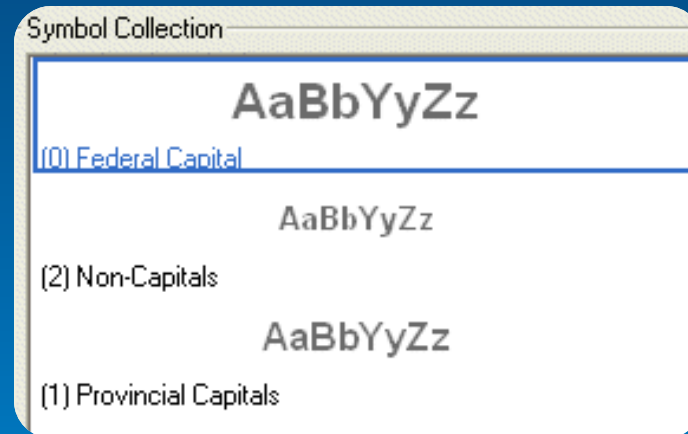
Geodatabase annotation

- Feature class
- Reuse
- Choose from
 - Standard
 - Feature-linked
- Reference scale
- Licensing



Symbol collection

- **Named text symbols**
- **Maximizes performance**
- **Reduces storage size**
- **Promote standards**
- **Add or delete**
- **Symbol ID**



Fields

- **Displays information**
 - **Text string**
 - **Appearance**
 - **Placement**
 - **Status**

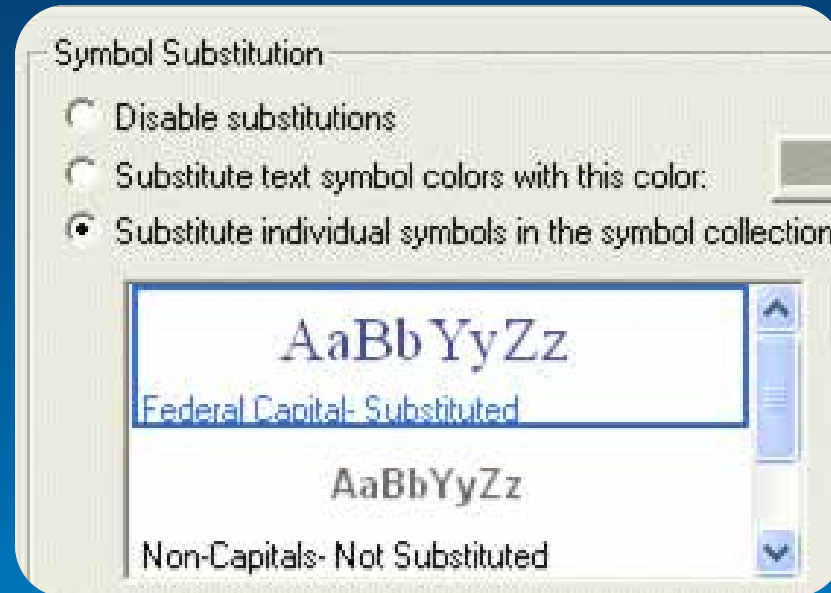
- **Queries**
 - **Quality control**
 - **Batch updates**

? **FAQ: What do the different fields in an annotation feature class mean?**

Article ID: 30329

Annotation layer

- **Substitute values (read-only)**
 - **Placement**
 - **Font**
 - **Word spacing**
 - **Leading property**



Override symbol properties

- **Edit properties of individual features**
 - **Maintains link**
 - **Change symbol used**
 - **Text formatting tags**
 - **Inline storage**



HowTo: Determine which symbol properties are overridden in the annotation feature class

Article ID: 30204


Demo

Demo: Symbol Collection

Substitution
Overrides



Manual construction and editing

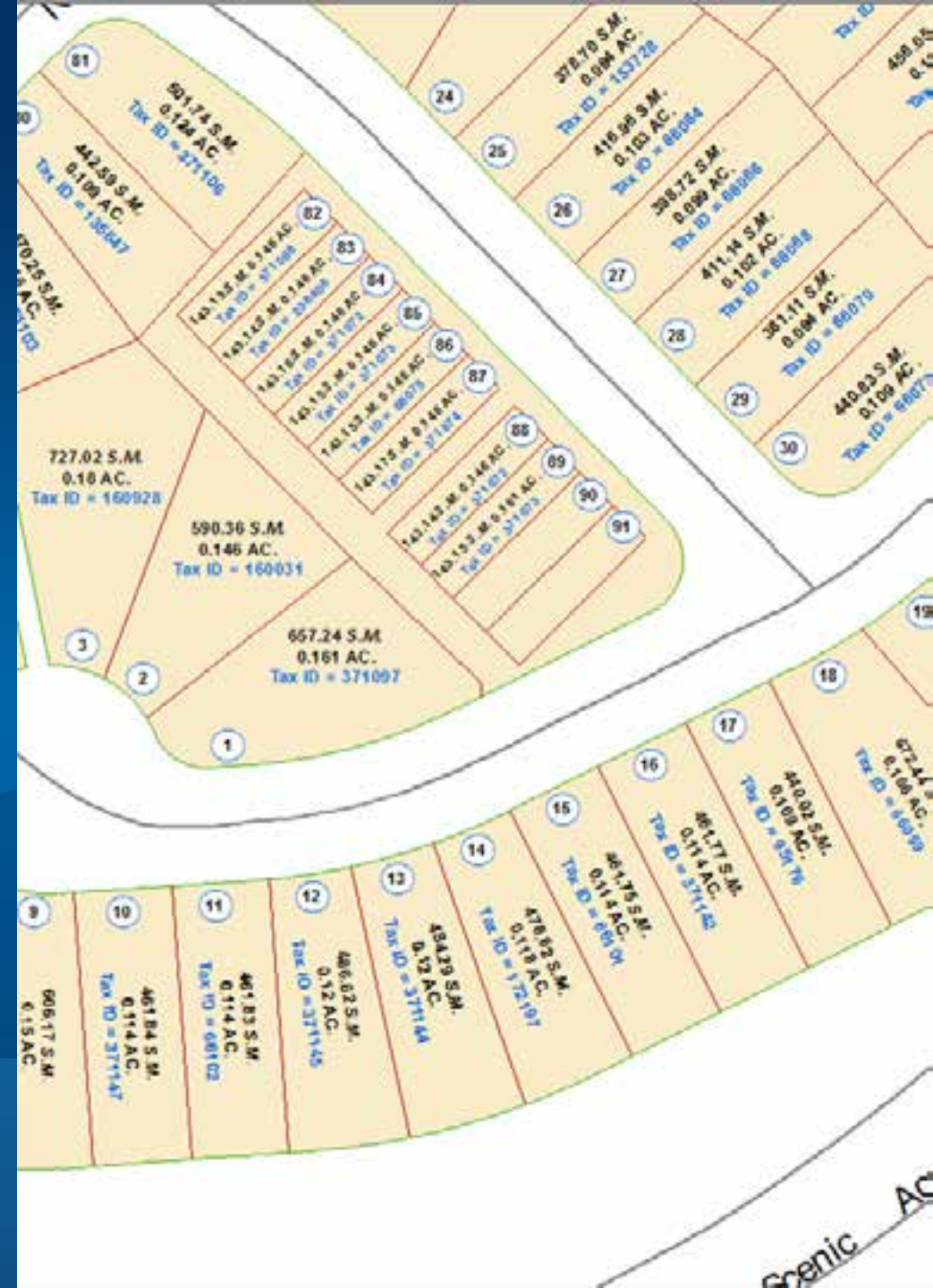
- **Tightly integrated with feature editing environment**
 - Editor toolbar
 - Feature templates
 - Annotation Construction window
- **Edit Annotation Tool** 
 - Context menu
 - Baseline editing
 - Instant visual feedback
- **Productivity shortcuts**



Curved annotation following user-defined baseline sketch

Demo: Editing Annotation

- Place unplaced annotation
- Create new annotation
- Modify existing annotation
- Shortcut keys for editing



Pulling it all together ...

- **Geodatabase annotation is a great choice for text storage, especially for:**
 - **Lots of text**
 - **Editing text**
 - **Use in multiple maps**
- **It has a unique set of properties**
 - **Symbol collection**
 - **Fields**
 - **Overrides**
- **To edit, use the standard editing environment with optimized tools for annotation**

Related Presentations

- **See us at the Mapping and Visualization Island at the Esri Showcase**
- **Desktop Mapping: Getting the Most from the Maplex Label Engine**
 - Thursday 8:30 am Room 14B

Thank you...



Please fill out the session evaluation

Offering ID: 1733

Online – www.esri.com/ucsessionsurveys

Paper – pick up and put in drop box



Understanding our world.