



# Top 10 API for JavaScript Skills

John Gravois

@geogangster

[http://johngravois.com/presentations/top10\\_jsapi\\_skills.pdf](http://johngravois.com/presentations/top10_jsapi_skills.pdf)

Demo Theater

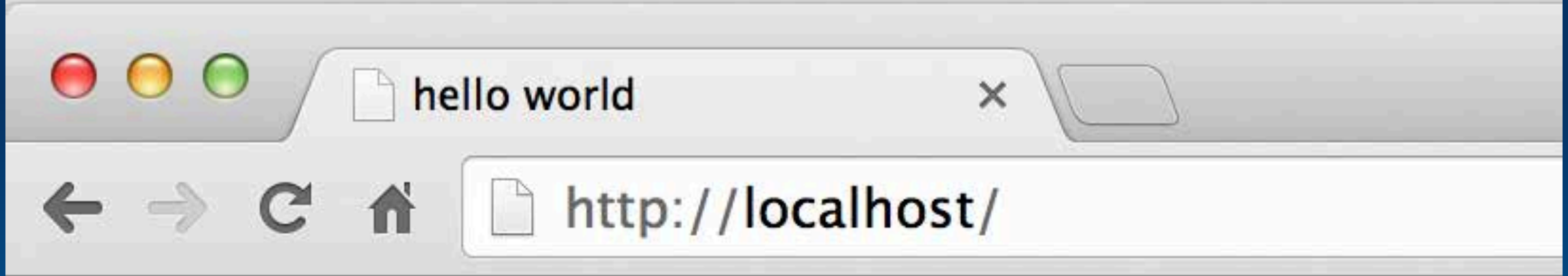
# 10.

you need a  
web server







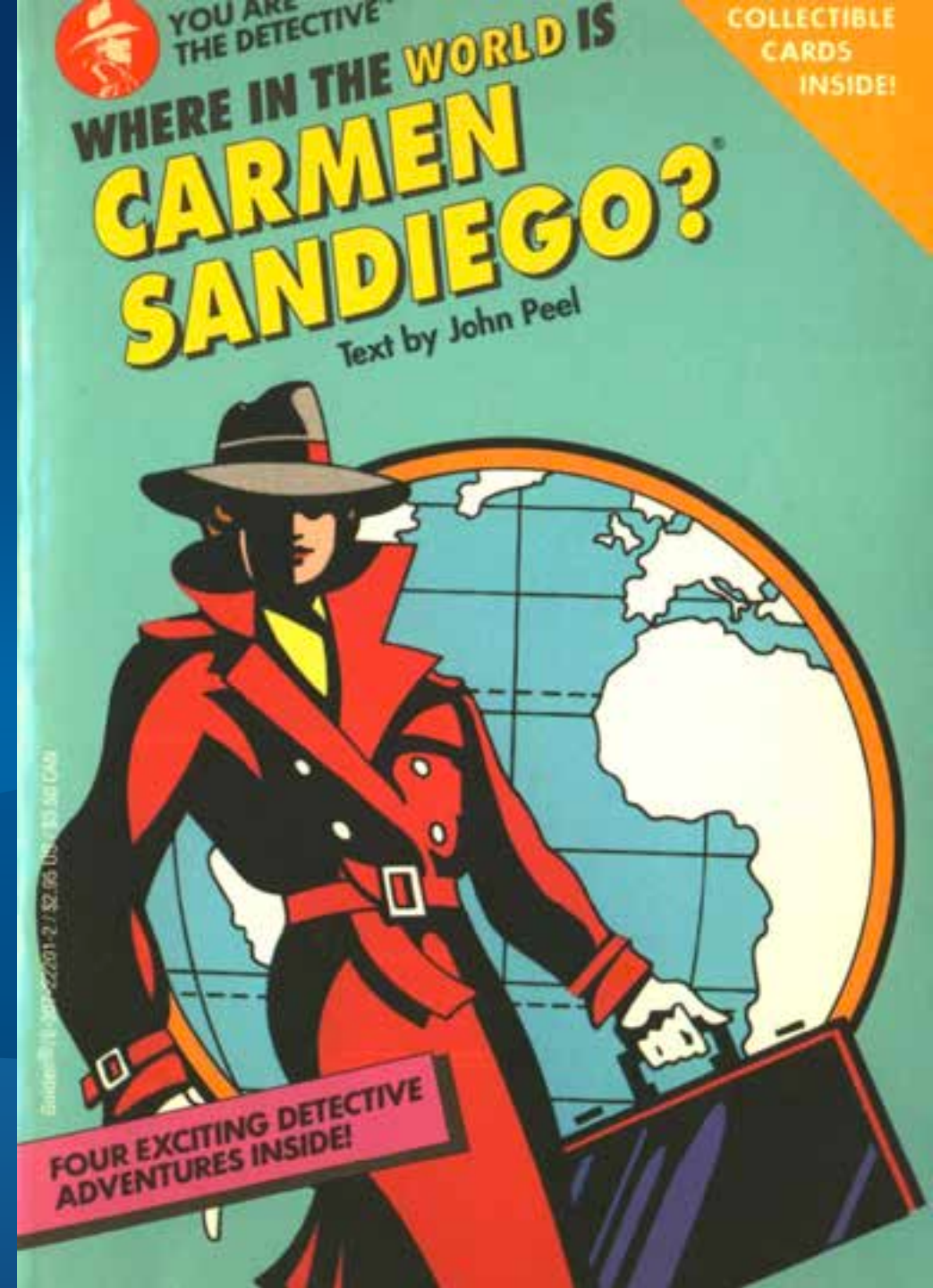


**It works!**



# 9.

# be a network traffic snoop



Some Text

Elements Resources Network Scripts Timeline Profiles Audits Console Search Network

Name Path	Method	Status Text	Type	Initiator	Size Content	Time Latency	Timeline
jquery-1.6.2.min.js /helium/main/helium/heliumT	GET	200 OK	applicat...	xyz_edgePreload. Script	89.47KB 89.41KB	5ms 3ms	67ms
jquery.easing.1.3.js /helium/main/helium/heliumT	GET	200 OK	applicat...	xyz_edgePreload. Script	7.96KB 7.91KB	4ms 3ms	100ms
edge.0.1.4.min.js /helium/main/helium/heliumT	GET	200 OK	applicat...	xyz_edgePreload. Script	75.67KB 75.61KB	3ms 2ms	134ms
xyz_edge.js /helium/main/helium/heliumT	GET	200 OK	applicat...	xyz_edgePreload. Script	2.12KB 2.06KB	3ms 3ms	167ms
xyz_edgeActions.js /helium/main/helium/heliumT	GET	200 OK	applicar...	xyz_edgePreload. Script	600B 541B	3ms 2ms	201ms
Adobe_logo.svg /helium/main/helium/heliumT	GET	404 Not Found	text/plain	edge.0.1.4.min.js Script	131B 35B	4ms 3ms	

13 requests | 357.14KB transferred

# •demo

---



# 8.

set  
break  
points



MAKE GIFS AT [GIFSOUP.COM](http://GIFSOUP.COM)



# 7. events



- one argument (JavaScript object)
- dojo/on (or use the evented class)

```
1 on(map, "extent-change", function(evt){
2   var s = "";
3     s = "Xmin: " + evt.extent.xmin + " "
4       + "Ymin: " + evt.extent.ymin + " "
5       + "Xmax: " + evt.extent.xmax + " "
6       + "Ymax: " + evt.extent.ymax;
7     dom.byId("info").innerHTML = s;
8   });
9
```

# •demo

---

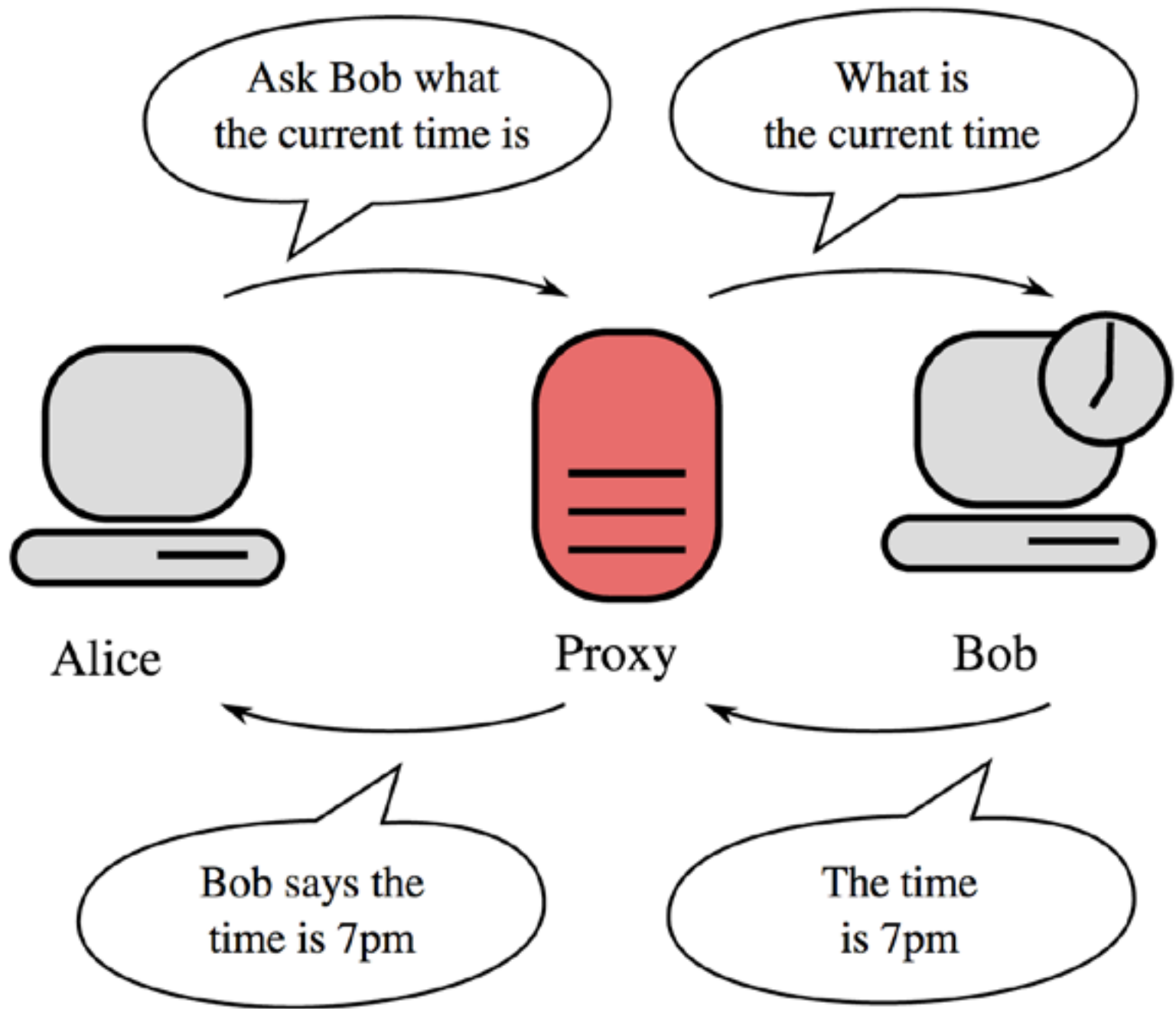


[live app](#)  
[code](#)  
[API reference](#)



# 6. ■ set up a proxy

```
1  
2  
3 //all requests to route.  
  arcgis.com will proxy to  
  the proxyUrl defined here.  
4 urlUtils.addProxyRule({  
5     urlPrefix:  
6         "route.arcgis.com",  
7     proxyUrl:  
8         "/sproxy/proxy.ashx"  
9 });
```



# 5.



# Lets talk security





# 3 options to consider

- IdentityManager
- OAuth2
- proxy

# 4.

# AMD



X

```
1  require([
2      /*ordered list of modules to load*/
3      "esri/map", "esri/InfoTemplate", "esri/layers/FeatureLayer",
4      "dojo/parser", "dojo/domReady!"
5
6      /*Beginning of anonymous callback function
7      which fires once all modules have loaded*/
8  ], function(
9
10     /*Variable names to refer to each loaded module*/
11     Map, InfoTemplate, FeatureLayer,
12     parser
13 ) { /*Beginning of actual callback code*/
14     parser.parse();
15     map = new Map("mapDiv", {
16         basemap: "national-geographic",
17         center: [-2.97, 53.41],
18         zoom: 9
19     });
20     ...
21
22 }) /*Close the callback curly brace and require's parenthesis*/
```

from: <http://blogs.esri.com/esri/arcgis/2013/10/14/the-abcs-of-amd/>



# 3.

# maps from arcgis.com



### Change Symbols

Specify what symbols to use to draw the layer. [Help](#)

Use: Color

To show: RENTER\_OCC

Normalized By: POP2010

By: Natural Breaks

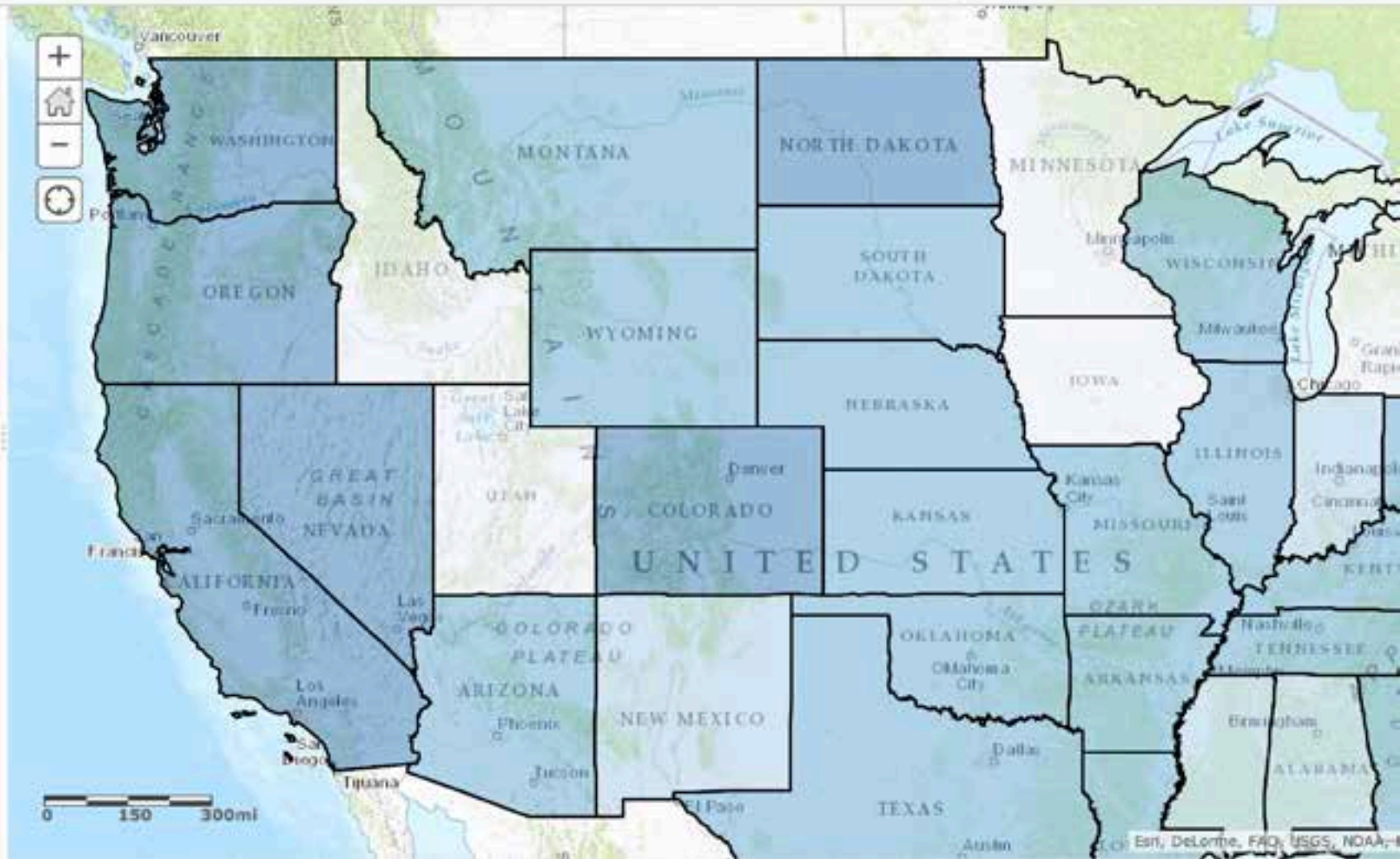
With: 5 Classes

Colors: 

OPTIONS [APPLY](#)

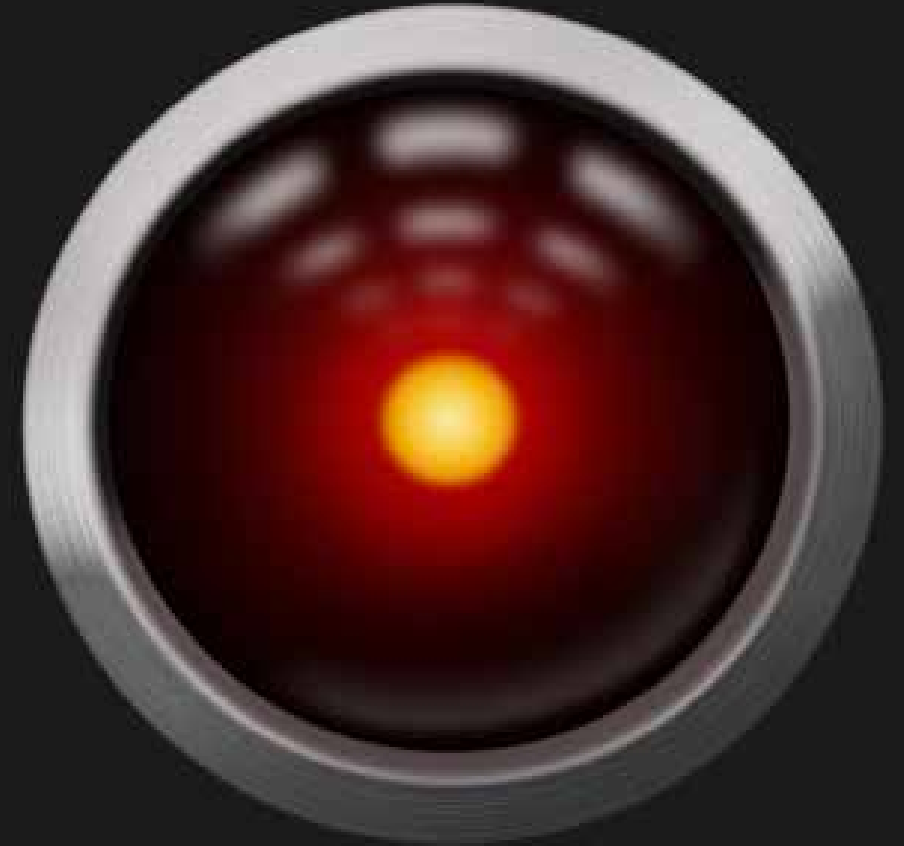
	0.09390947886760846 - 0.111918
	0.111918 - 0.122623
	0.122623 - 0.135164
	0.135164 - 0.176484
	0.176484 - 0.257015271146358

[DONE CHANGING SYMBOLS](#)



# 2.

# use the console



>>Open the pod bay doors HAL

Create web map from id x

developers.arcgis.com/javascript/samples/ags\_createwebmapid/

Paused in debugger

## USA Tapestry Segmentation

This map shows the dominant lifestyle segment in an area in 2012, based on Esri's Tapestry Segmentation system.

Esri, HERE, DeLorme, MapmyIndia, © OpenStreetMap contributors, and the GI...

Elements Network Sources Timeline Profiles Resources Audits Console

<top frame> v

```

> Resource interpreted as Script but transferred with MIME type text/plain: "http://services.arcgisonline.com/ArcGIS/rest/services/Canvas/World_Light_Gr...
f=ison6callback=dojo.io.script.isonp_dojioScript1_isonpCallback"
> Resource interpreted as Script but transferred with MIME type text/plain: "http://services.arcgisonline.com/ArcGIS/rest/services/Canvas/World_Light_Gr...
f=ison6callback=dojo.io.script.isonp_dojioScript3_isonpCallback"
> Resource interpreted as Script but transferred with MIME type text/plain: "http://services.arcgisonline.com/ArcGIS/rest/services/Demographics/USA_Tape...
f=ison6callback=dojo.io.script.isonp_dojioScript4_isonpCallback"
> response.map.extent
> Object {type: "extent", xmin: -21016507.191805135, ymin: 2248967.003909594, xmax: -315770.954827223, ymax: 7336615.606569573...}
> response.map.layerIds
["World_Light_Gray_Base_488", "USA_Tapestry_335", "World_Light_Gray_Reference_5717"]
> response.map.getLevel()
3
> response.map.

```

- getBasemap
- getInfoWindowAnchor
- getInherited
- getLayer
- getLayersVisibleAtScale
- getLevel
- getMaxScale
- getMaxZoom
- getMinScale
- getMinZoom
- getNumLevels
- getResolution
- getResolutionInMeters

# • demo





# 1. know where to go for help



**Technical  
Support**



**#irc**



**StackExchange**





<http://johngravois.com/presentations/>

**Thank you...**

**If you'd be so kind,  
please fill out the session survey:**

**~~First Offering ID: 1530~~**

**Second Offering ID: 1541**

**Online – [www.esri.com/ucsessionsurveys](http://www.esri.com/ucsessionsurveys)**



Understanding our world.