


Hema Explorer Map

Multi-scale Layer Map

Pierre Kurth

Hema Maps - Australia



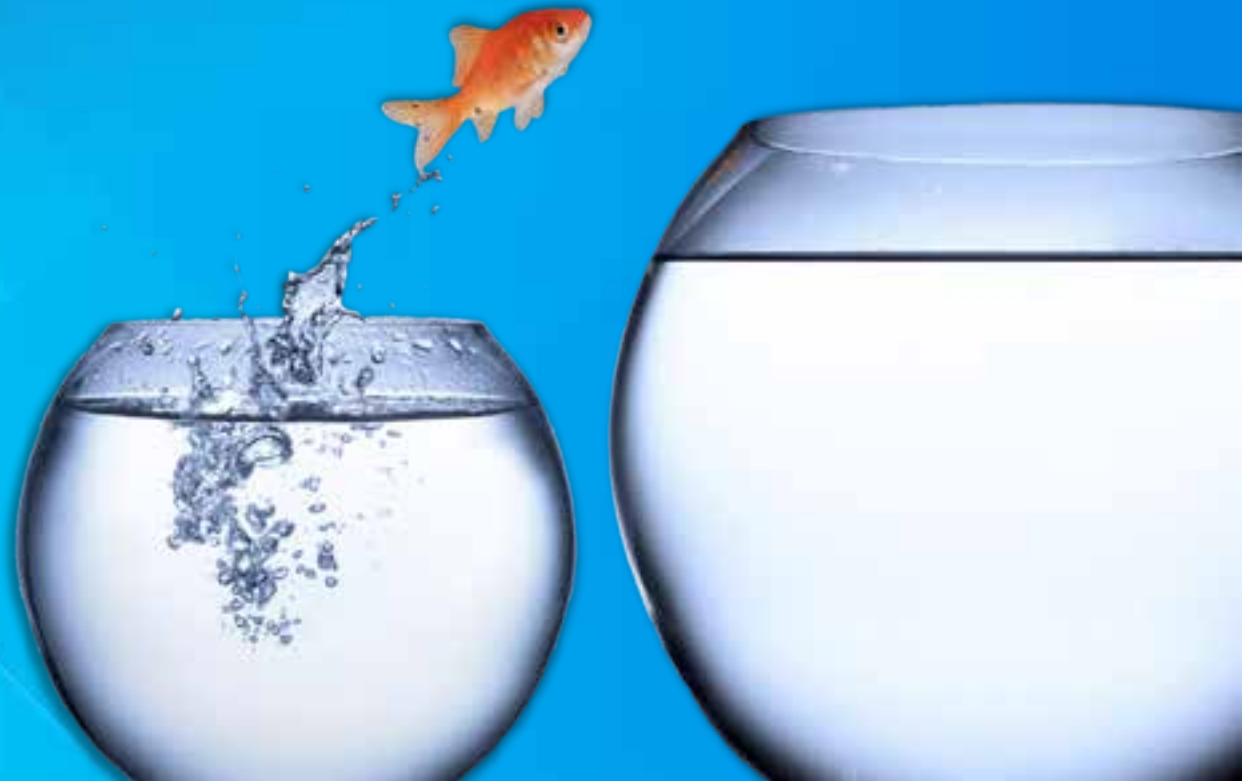


“When a thing beckons you to explore it without telling you why or how, this is not a red herring; it’s a map.”

Gina Greenlee

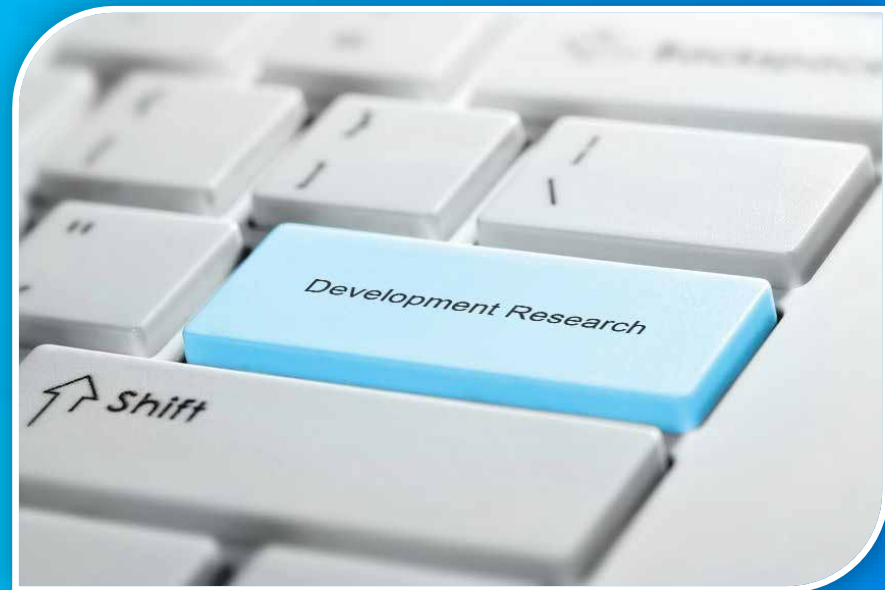
Database centric rather than product centric

- Increasing demand for quicker updates
- Future proof
- Suit Hema Maps' product range



Research and Development

- Three major projects
- What were we trying to achieve?
- No need to reinvent the wheel
- Assess and compare various datasets
- Data for large scales



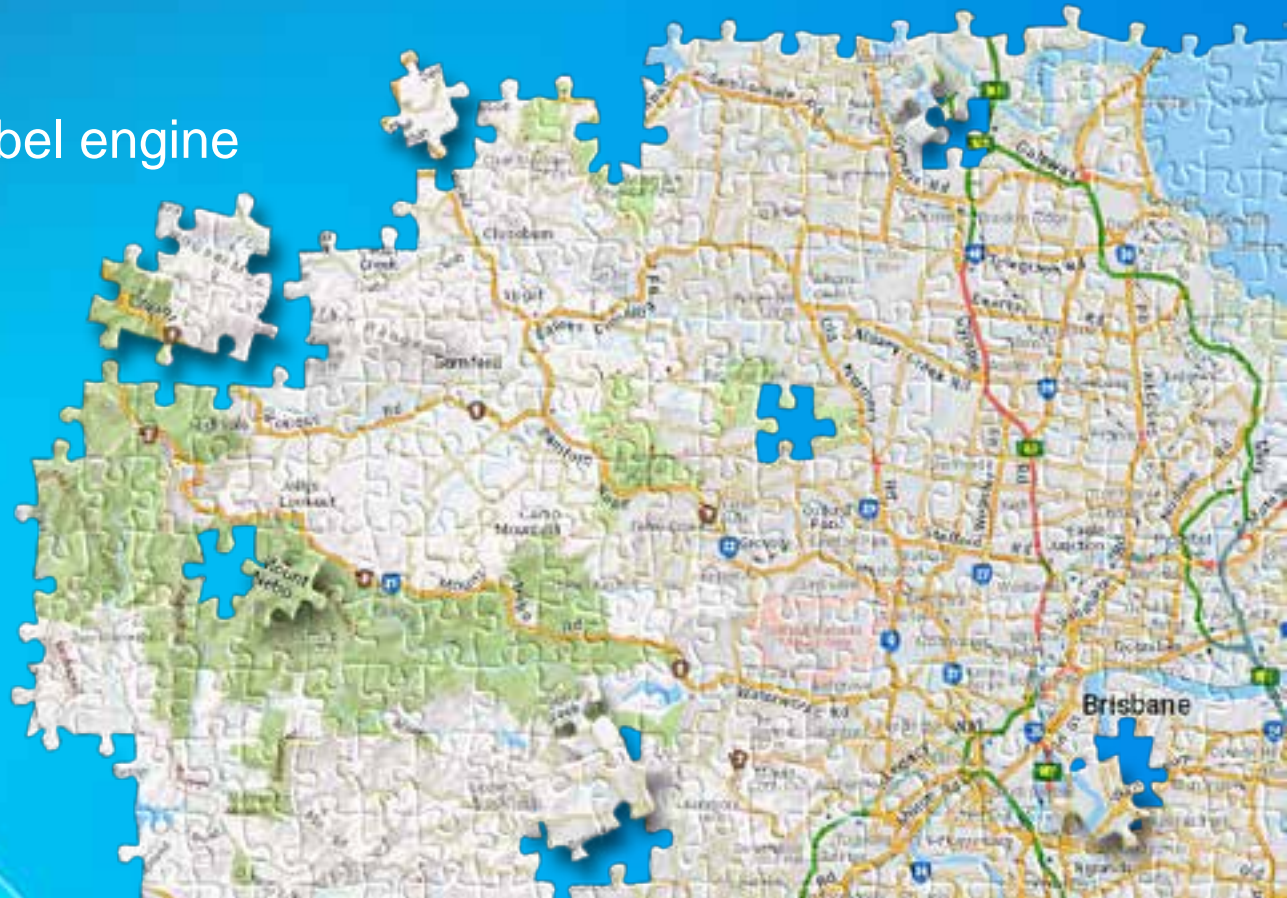
Database restructure and clean-up

- Started from scratch
- Automated and repeatable processes
- Introduced ISO standards
- Generalization



Process of the making

- Purpose of the map?
- Setup master *.mxd with zoom layer
- Visualization
- Set up Maplex label engine
- Explorer Map



Wrap up

- Sound and well structured database
- Automated and repeatable workflows
- Generalized datasets



What's next?

Vector tile map



Thank you



Pierre Kurth
Senior Cartographer / GIS Analyst
pierre@hemamaps.com.au
Esri Map Gallery ID 189