

2020 Redistricting Data Program Phase 1 – The Block Boundary Suggestion Project



James Whitehorne
Chief (Acting), Census Redistricting Data Office

ESRI International User Conference
July 21st, 2015

2020 Redistricting Data Program

- Phase 1 – The Block Boundary Suggestion Project (BBSP)
- Phase 2 – The Voting District Project (VTDP)
- Phase 3 – Data Delivery
 - P.L. 94-171 Redistricting Data Tabulations
 - Geographic Support products
- Phase 4 – Collection of the new plans
 - 118th Congressional Plans
 - New State Legislative District Plans
- Phase 5 – The View From the States
 - The evaluation of the 2020 Redistricting Data Program (RDP), the recommendations from the states, and the plan for the 2030 RDP

2020 Redistricting Data Program

- Phase 1 – The Block Boundary Suggestion Project (BBSP)
 - States can influence the 2020 tabulation blocks
 - Must Hold/ Do Not Hold
 - Missing Features
 - Misaligned Features
 - Suggest updates to legal boundaries – **NEW for 2020**
- Phase 2 – The Voting District Project (VTDP)
 - States provide their Election Districts/Precincts/Wards
 - Suggest updates to legal boundaries – **NEW for 2020**

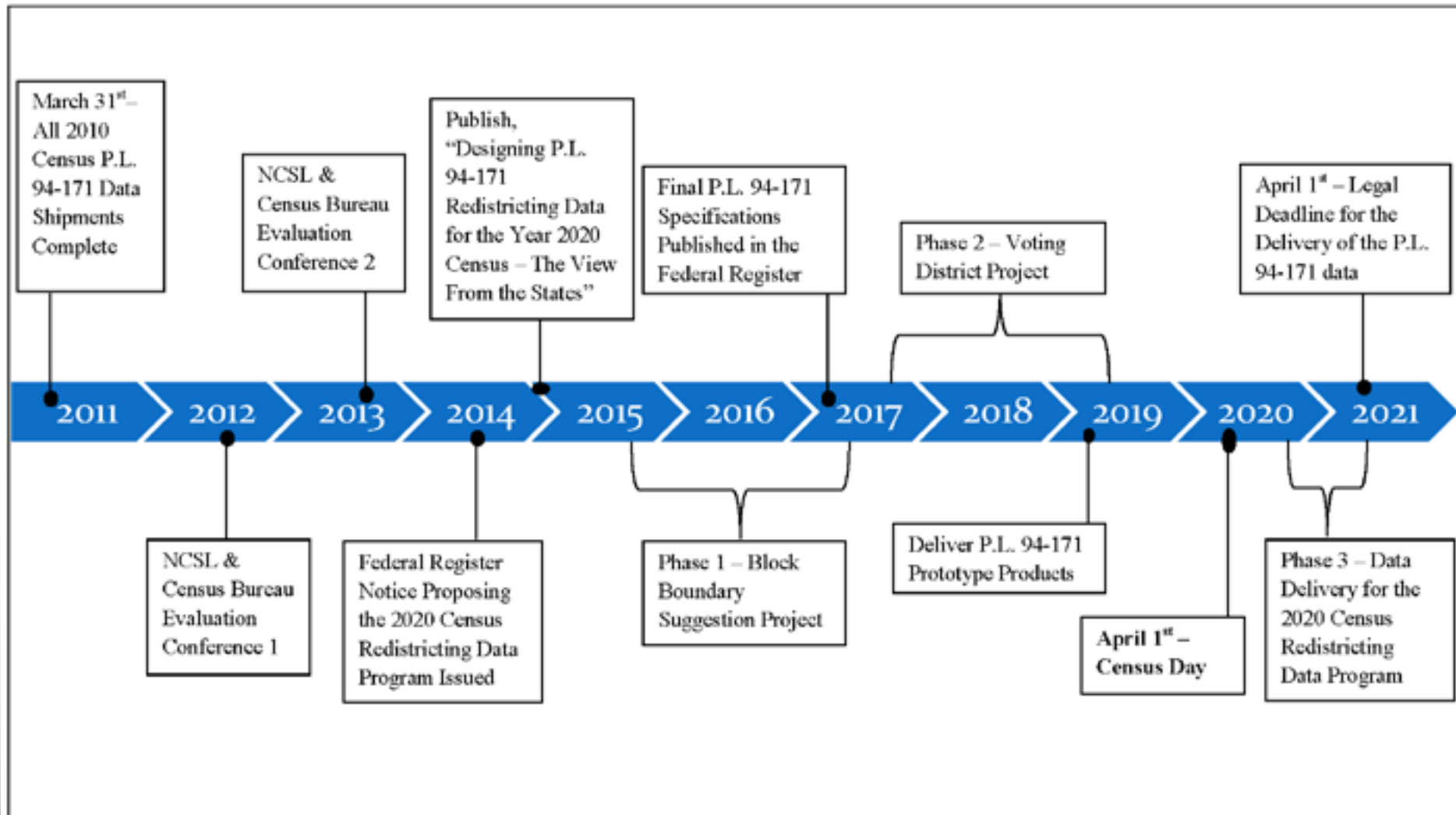
2020 Redistricting Data Program

- Phase 3 – Data Delivery
 - P.L. 94-171 Redistricting Data File
 - Race
 - Hispanic or Latino, and not Hispanic or Latino by Race
 - Race for the Population 18 Years and Over
 - Hispanic or Latino, and not Hispanic or Latino by Race for the Population 18 Years and Over
 - Occupancy Status (Housing)
 - Group Quarters – **NEW for 2020**
 - Geographic Support Products
 - Shapefiles
 - Maps (PDF only)
 - Block Assignment Files
 - Block to Block Relationship Files – **NEW (timing) for 2020**

2020 Redistricting Data Program

- Phase 4 – Collection of the New Plans
 - Collect Congressional plans on a 2-year cycle
 - Collect State Legislative District Plans on a 2-year cycle
 - Two versions collected - official and tabulation
- Phase 5 – The View From the States
 - Generate, from the States' point of view, a report detailing:
 - Successes of the 2020 Program
 - Failings of the 2020 Program
 - Recommendations for the 2030 Program
 - Report is vetted and approved up through the Director and with the official Redistricting Data Program liaisons
 - Report is used as the guiding document for designing the next cycle of the Redistricting Data Program

2020 Redistricting Data Program



2020 Redistricting Data Program

1990 – 2000 – Paper submissions for digitizing into TIGER

2010 Census – Digital with Census supplied software requirement

2020 Census – Digital with no software restrictions

2020 Redistricting Data Program

Recommended Workflow

- 2010 Feature Extension Review and Update
 - Delete, flag, ignore extensions from 2010
- Linear Feature Review and Update
 - Add missing features/Delete features
 - Correct misaligned features
- Area Landmark Review and Update
 - Add/Delete/Modify area landmarks
 - Flag boundaries as must hold if needed

2020 Redistricting Data Program

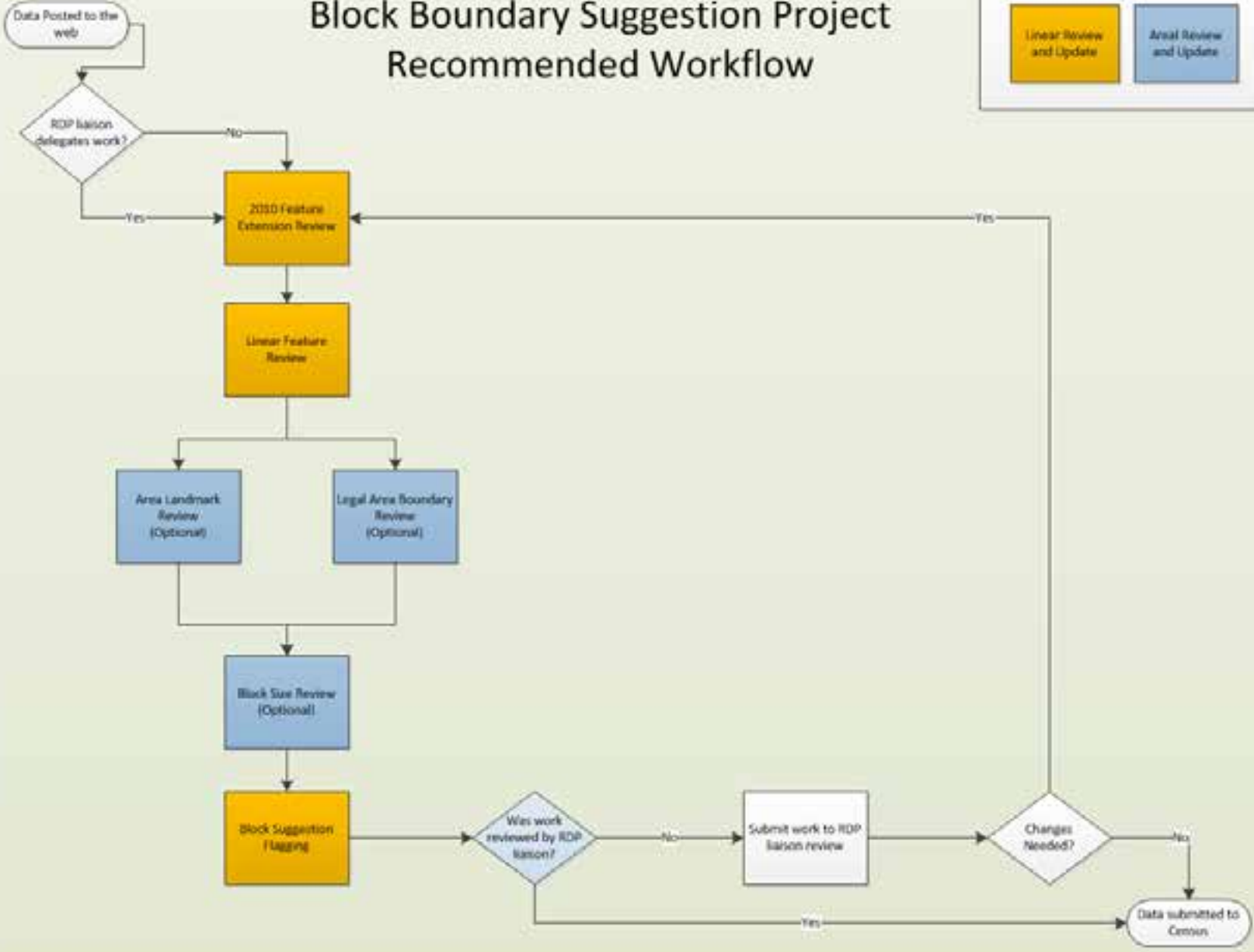
Recommended Workflow

- Legal Boundary Review and Update
 - Review and update boundaries to legal areas (Counties, MCDs, Places, Consolidated Cities)
- Block Size Review
 - Size indicator for easy location and evaluation
- Block Suggestion Flagging (Must Hold/Do Not Hold)
 - Identify remaining block boundaries needed
 - Identify remaining edges not wanted as block boundaries

Block Boundary Suggestion Project Recommended Workflow

Linear Review
and Update

Area Review
and Update



2020 Redistricting Data Program

- The Census Redistricting and Voting Rights Data Office (CRVRDO) coordinates all communication between participants and the Census Bureau
- Liaisons have the option to parcel work
- Liaisons must certify all work
- The CRVRDO will facilitate legal boundary updates with the Boundary and Annexation Survey team and area's highest elected official

Questions?

Contact:

James C. A. Whitehorne

Chief (Acting), Redistricting Data Office

(301)763-4039

james.whitehorne@census.gov