



Leveraging ESRI Portal for Project Management

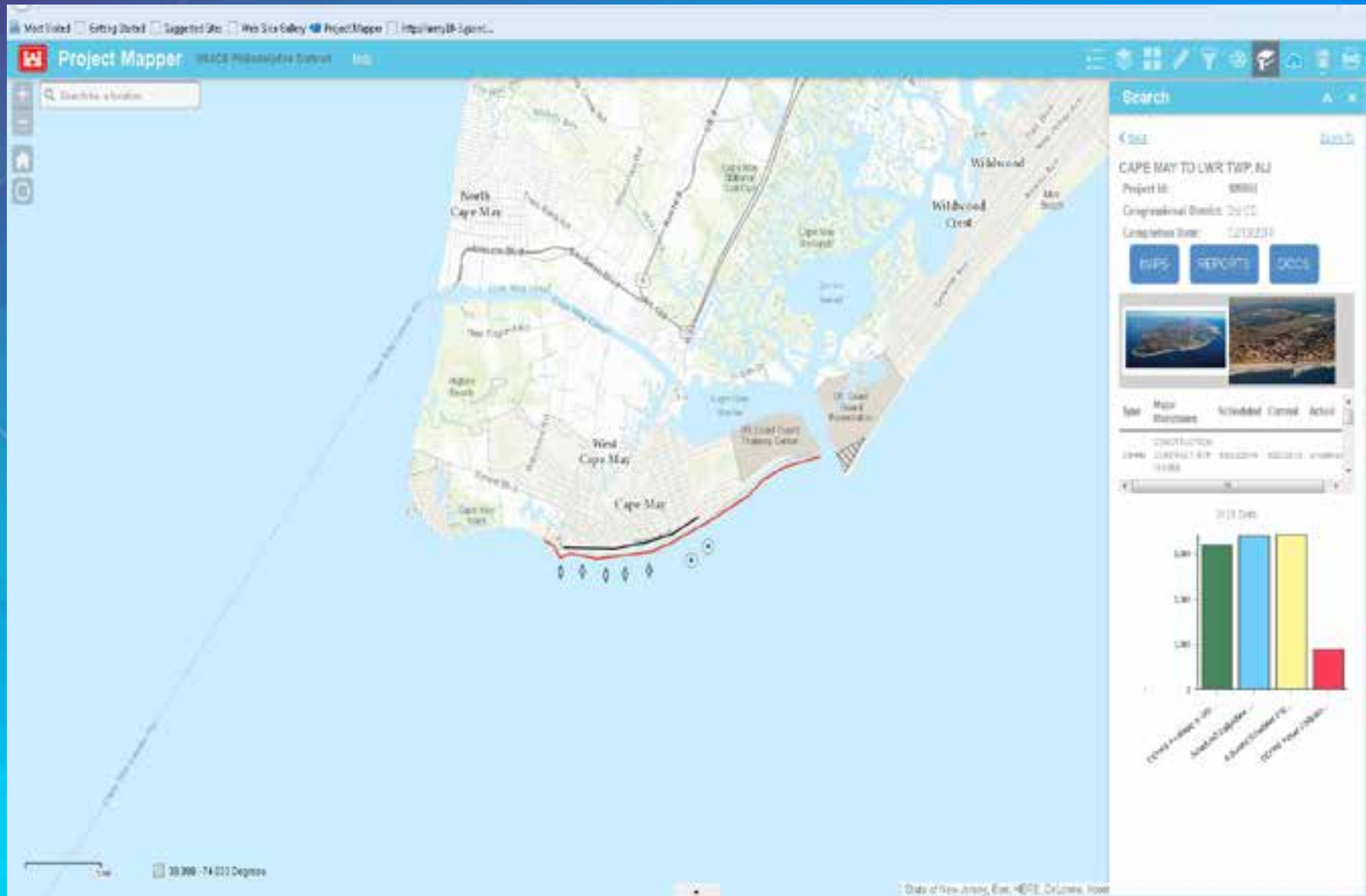
US Army Corps of Engineers (USACE)

Philadelphia District

Opening Comments

- **Colby Free – GISi – Federal Operations Manager**
- **Garo Ayanian - USACE – Project Manager**
- **Beth Adams - USACE – GIS Technical Lead**

Meet the ProjectMapper Dash



Meet ProjectMapper

The screenshot displays the Project Mapper web application interface. The main map shows the state of New Jersey with various project locations marked. A red-bordered inset map provides a detailed view of the Cape May area, including labels for North Cape May, Cape May, and Cape May Point. The inset map includes a legend with categories for 'New Features' and 'New Features'.

The 'Custom Print' sidebar on the right contains the following information:

- Map Title:** New Jersey Coast & Beaches
- Description:** 100185 - Cape May to Lower Township
- Credits:** US Army Engineer District Philadelphia
- Labels:** Site Legend North Arrow Overview Map
- Map Settings:** Scale No File Storage Print Image

The top of the interface shows the 'Project Mapper' logo and the 'USACE Philadelphia District' name. The bottom right corner features a 'Print' button.

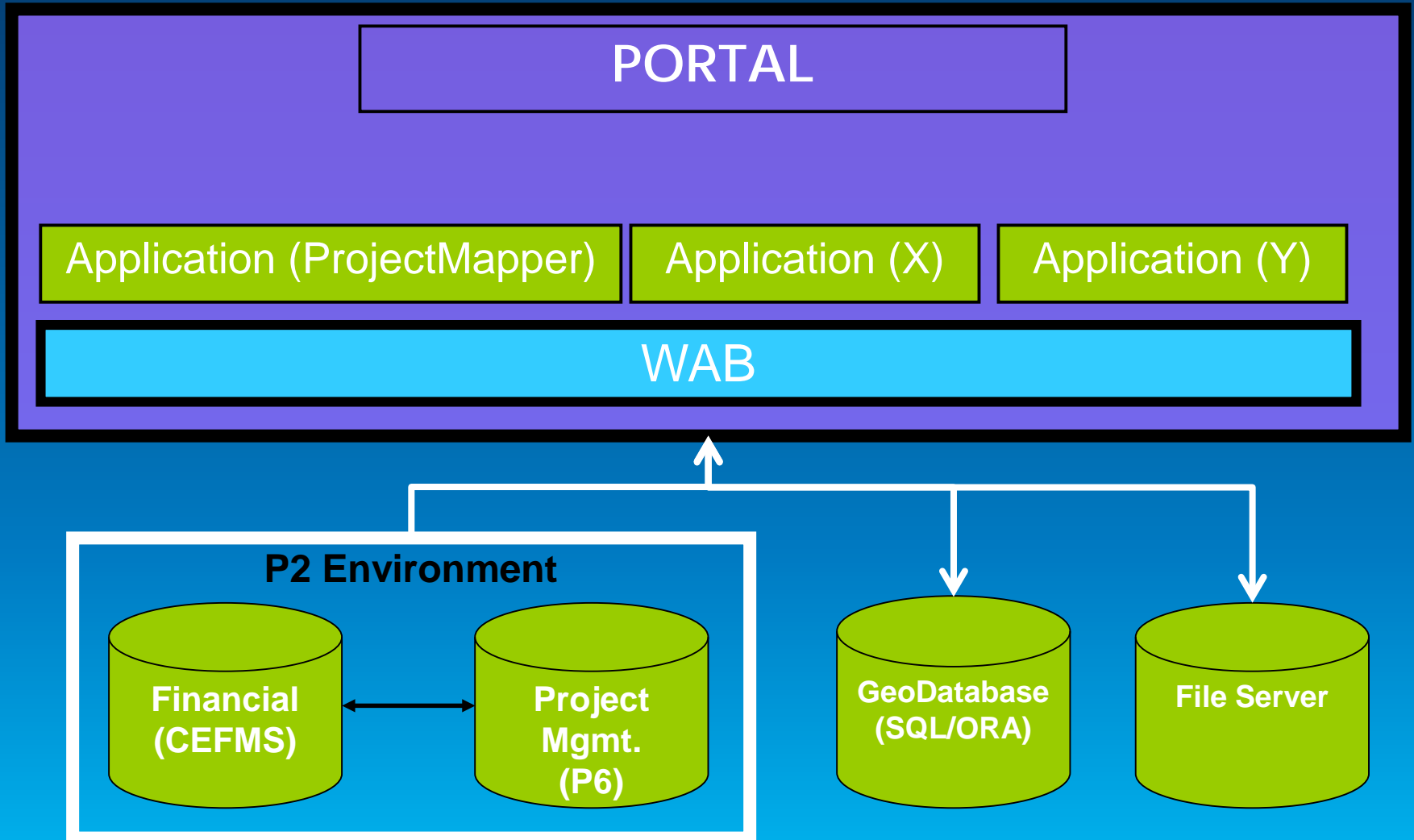
How did we get here?

- **Project Evolution**
- **ProjectMapper beta**
- **Needs assessment and refocus of priorities**
- **Rebuilding in Portal**

Why Portal?

- **The Web App Builder (WAB)**
- **Maximize current investment in ESRI technology stack**
- **Early in the Systems Development Life Cycle (SLDC)**
- **We needed a customized app that delivered our requirements**

Application Architecture



ProjectMapper Features

- **Allows users to create, edit, and view project maps**
- **Layout feature**
- **Allows users to generate, edit, or consume project data**
- **Verified feature**
- **Add layer feature**
- **Dashboard feature**
- **Data organization**
- **Scalability, administration and sharing**

Application Demonstration



Thank you

The background features a large blue area on the left and a complex geometric pattern on the right. The pattern consists of overlapping triangles and polygons in shades of purple, dark blue, and yellow. A faint map outline is visible in the yellow section at the bottom right.