



The Use of the ArcGIS

Supporting the Local Government's
Mission of Providing a Safe Walkable Community.

DAVID N. KUNZ, GISP – CIVIL SOLUTIONS, A DIVISION OF ARH



10^{-0}





Bloomfield, New Jersey

Incorporated: March 1812

Population: 47,600

Area: 5.3 sq. mi

Home to Bloomfield College
founded in 1868





Defining Parameters

Shrinking budgets

“Work smarter not harder”

“Do more with
less”

“Back to core responsibilities”

Dynamic roles

Increased use of Consultants

Increased Expectations



Path to Success

*Author map once,
publish once,
use anywhere,
any device*

Build Relevance

Follow industry best
management practices

One
map

Embed technology within workflow

Faster solution deployment

Empower the User

Cheaper/simpler solutions for maintenance

Leverage COTS

GIS is a Platform

Usage Patterns of GIS in Local Government

Knowledge
Workers



Executive
Access



Public
Engagement



Work
Anywhere

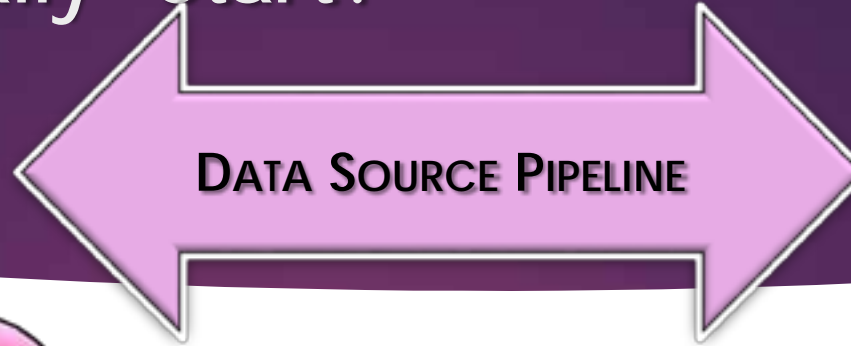


Enterprise
Integration



Web GIS

Where Do You "Really" Start?



DATA SOURCING

- Normalized Data Dictionary
- Indexing Conventions
- Data Owner/Producer
- Key Stakeholders
- Data Relationship/Overlap

TECHNOLOGY PLATFORM

- Enterprise Integration
- Migration Strategy

1. Data Maintenance Strategy
2. Workload & Staffing Strategy
3. Ongoing Funding Strategy

**DATA DISTRIBUTION
USER GROUPS**

- County
- Municipal
- Professionals
- Other Commercial
- Other Government
- Public

**MANAGE
RELATIONSHIPS & DATA**



ArcGIS Supporting Local Assets

inventory and management



Storm water

Catch basins



Traffic Control

Signs, Signals, etc.



Modes of Transportation

Sidewalks, Curbing, Ramps, etc.

In the News...

City to pay \$3M to settle lawsuit over sidewalk accident

Posted: May 16, 2012 6:32 PM EDT
Updated: Oct 03, 2012 6:32 PM EDT

By Morse Diggs, FOX 5 Reporter [CONNECT](#)

[Recommend](#) [f](#) [t](#) [v](#) [+](#) [a](#)



Village Forcing Homeowners to Repair Broken Sidewalks

Initiative to ensure sidewalks in Ridgewood meet ADA compliance, according to village.

By James Kleimann (Pitch Staff)
Updated July 24, 2012 at 7:27 pm





ArcGIS Online – Managing Assets

HOME GALLERY MAP GROUPS MY CONTENT MY ORGANIZATION David



Civil Solutions
a division of *arh*

Featured Items

- 
Kearny Land Use Public Notification
- 
Show Us Your CS Mug Shot
- 
Winslow Economic Development Preview

Welcome to Civil Solutions on ArcGIS Online!

Civil Solutions is the Geospatial Services division of ARH Associates, Inc., a multi-disciplined civil engineering, surveying and planning company servicing the Mid-Atlantic market area.

[Home](#) | [ArcGIS Marketplace](#) | [Help](#) | [Terms of Use](#) | [Privacy](#) | [Contact Us](#) | [Report Abuse](#)



It's About Managing Content...

HOME GALLERY MAP GROUPS MY CONTENT MY ORGANIZATION

David







My Groups

CREATE A GROUP

Show

All My Groups
Owned by Me
Owned by Others
With New Membership Requests

You are a member of 6 groups

-  **Bloomfield Office**
This group is for Bloomfield Office related maps, apps, etc.
created by dkurz_rs on June 23, 2014
[Details](#)
-  **Civil Solutions Demo Group**
A place for our clients to see things that we are involved with in other communities.
created by CivlAdmin on September 2, 2014
[Details](#)
-  **Civil Solutions Sand Box**
Civil Solutions projects and applications that are being tested, tweaked, and created.
created by MapsT on August 28, 2014
[Details](#)
-  **DKurz Testing Group**
Group containing testing maps and apps created by David Kurz
created by dkurz_rs on April 23, 2014
[Details](#)
-  **Internal**
A group for ARH/CS eyes only.
created by MapsT on August 28, 2014
[Details](#)
-  **Town of Keamy, ND**
Informational resources and ideas to support the GIS implementation for the Town of Keamy, ND
created by CivlAdmin on March 11, 2013
[Details](#)

Find...

- The organization's groups
- The organization's groups that are public

Featured Groups

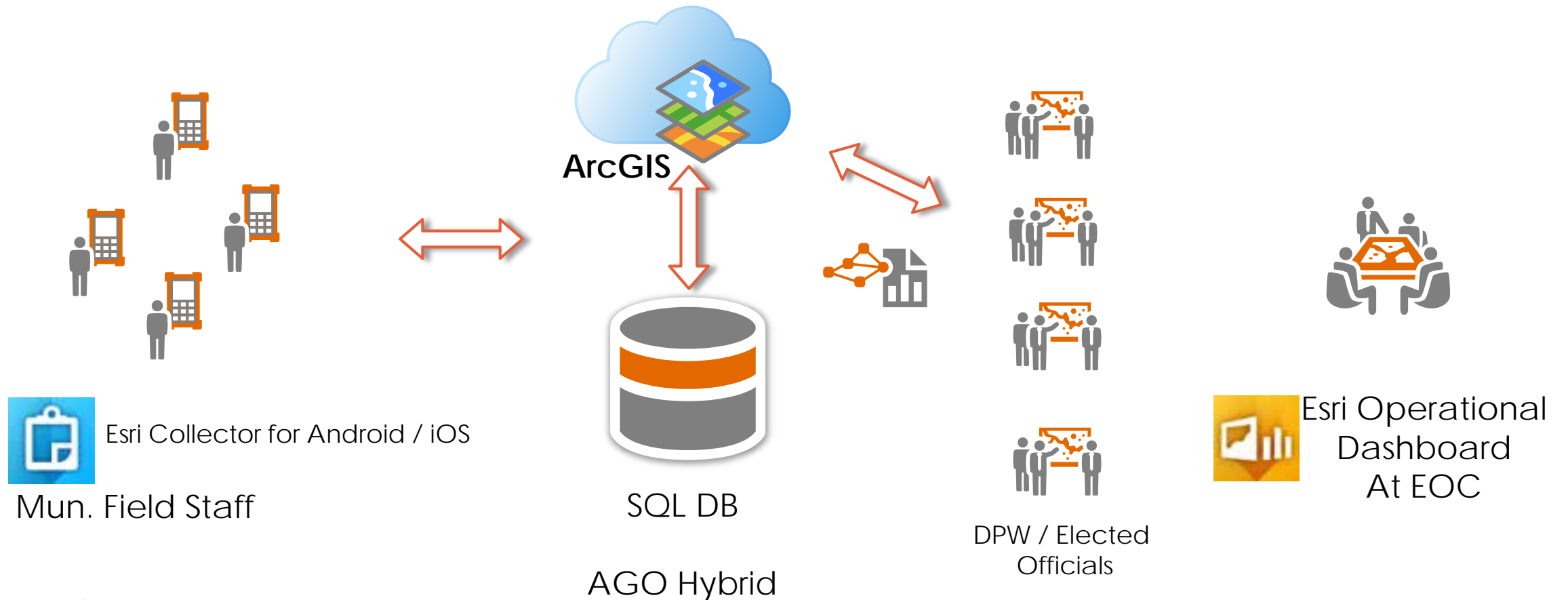
- National Maps for USA
- Esri Maps and Data
- Community Basemaps
- Landset Community
- Web Application Templates
- ArcGIS for Local Government

Case Study – Managing Local Assets

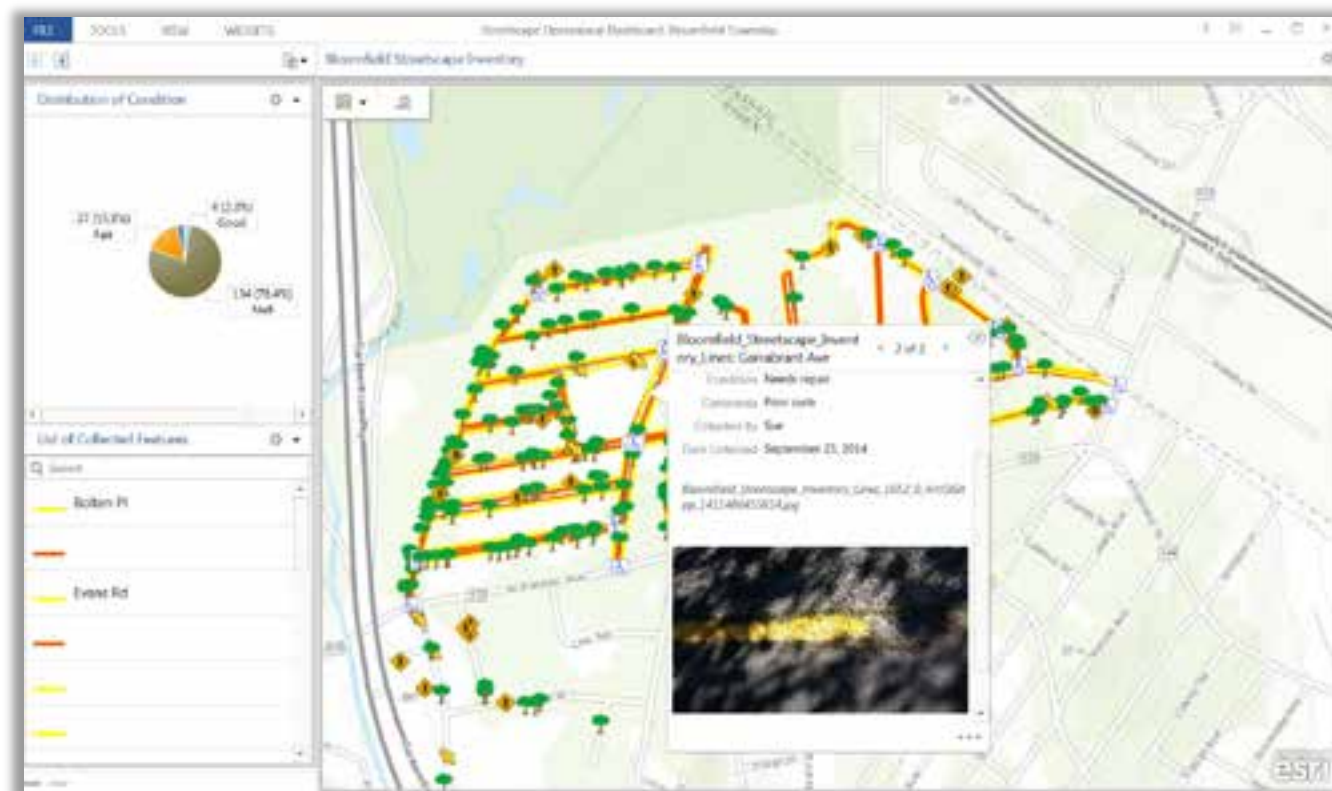


Sidewalk Safety

Empower the Users



GIS Solution - Empower the User



Deploy the
complete platform

Create a destination
with Portal

Configure first,
customize second

Create **useful**
information products

Light up everyone
in the organization

Thank you



David N. Kunz, GISP
Civil Solutions, a division of ARH
dkunz@arh-us.com
973.769.3636

