

Building a Statewide Address Point Layer for NG9-1-1

Jessica Beierman - GeoComm

Agenda

- **North Dakota DES Goals**
- **Data development approach**
- **Evolution of project**
- **Challenges**
- **Quality control and ongoing maintenance plan**
- **Next steps for North Dakota DES**
- **Lessons learned**



Dispatch
Mapping

Emergency
Notification

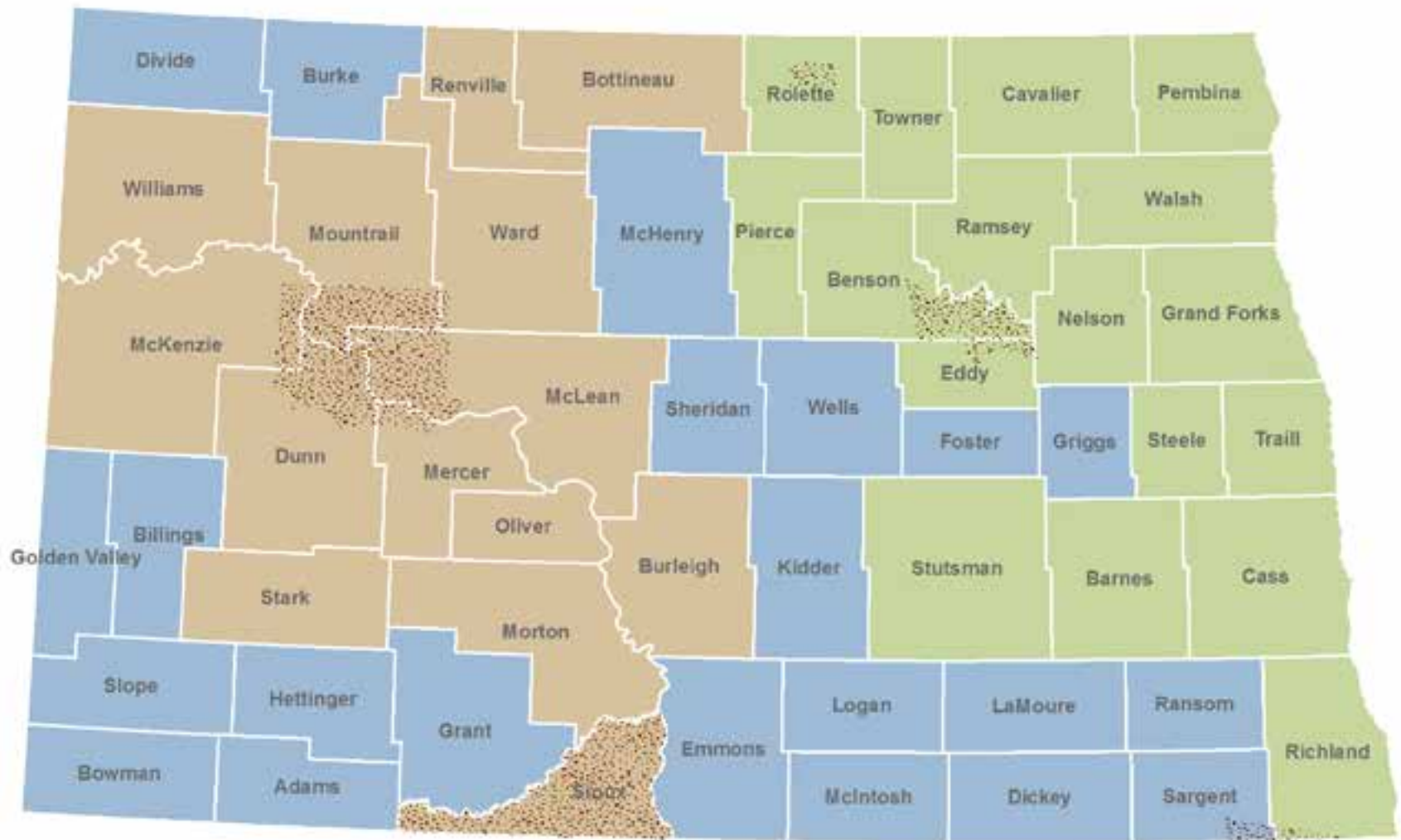
Address
Points

Location
Validation
(LVF)

Call
Routing
(ECRF)

Identifying
addressing
anomalies

3 Phases - 2012 - 2015



Data development approach

ND DOT

- aerial imagery
- road centerline digitization

GeoComm

- road centerline road names and ranges
- point layer development & field verification

ND DES review & maintenance coordination

- Updates
- Data aggregation
- Data distribution

Final data delivery October 2015

Considerations

How was your layer developed?

- Parcel Centroid
- Building Footprint Centroid
- Driveway Access
- Structure Front Door
- Building Rooftop – from aerial photo
- Fieldwork or remote
- ALI database or other address database geocode

ADDRESS POINT PLACEMENT

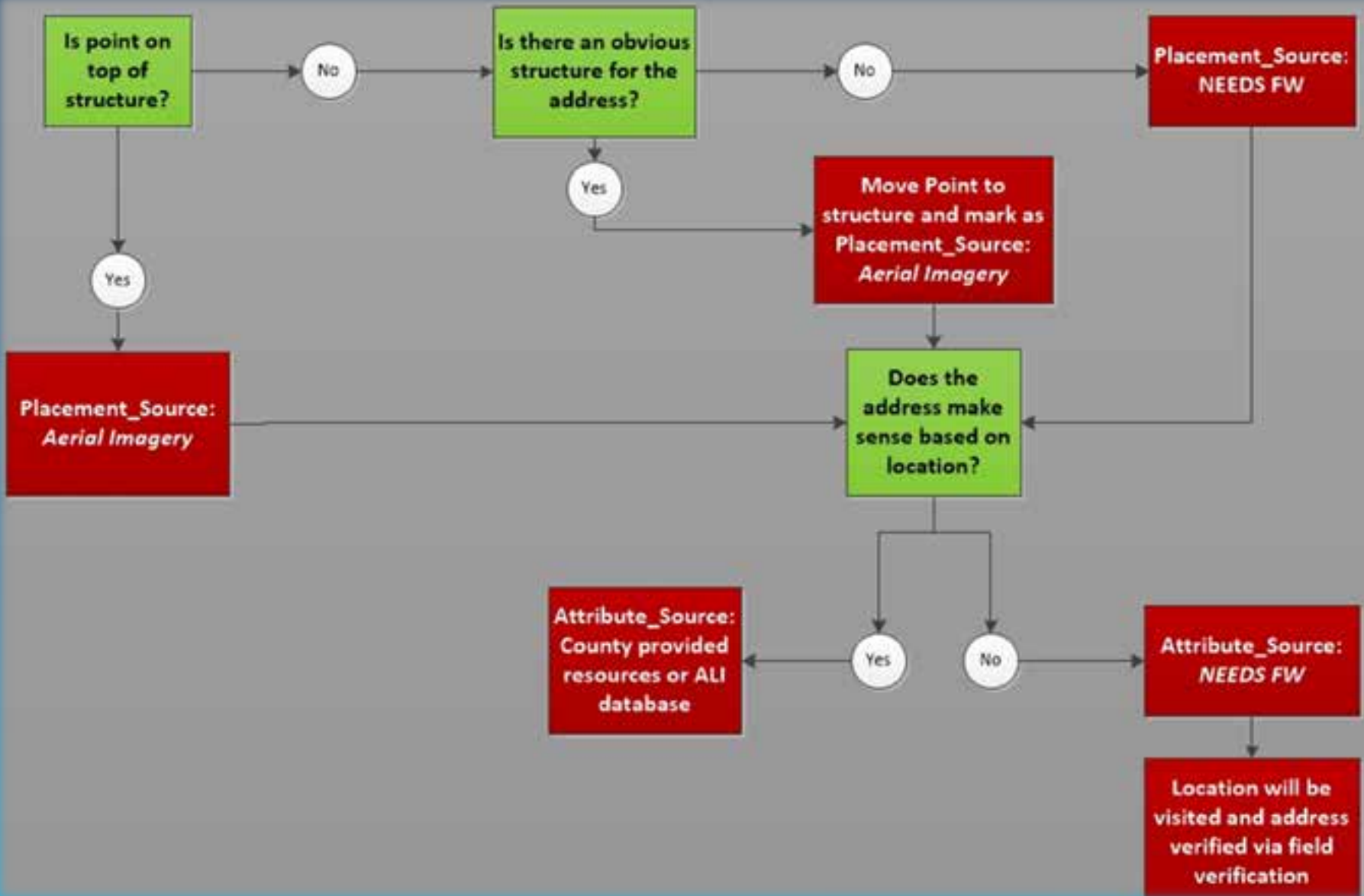


Actual building
(rooftop)



Access to a
Property

Address point development workflow



Evolution of project

Original

- Enhanced 9-1-1
- Future Next Generation 9-1-1 needs

Now

- Statewide MSAG
- Use of data for other agencies

Challenges

Development challenges

Maintenance challenges

Local stakeholder challenges

Quality control and ongoing maintenance

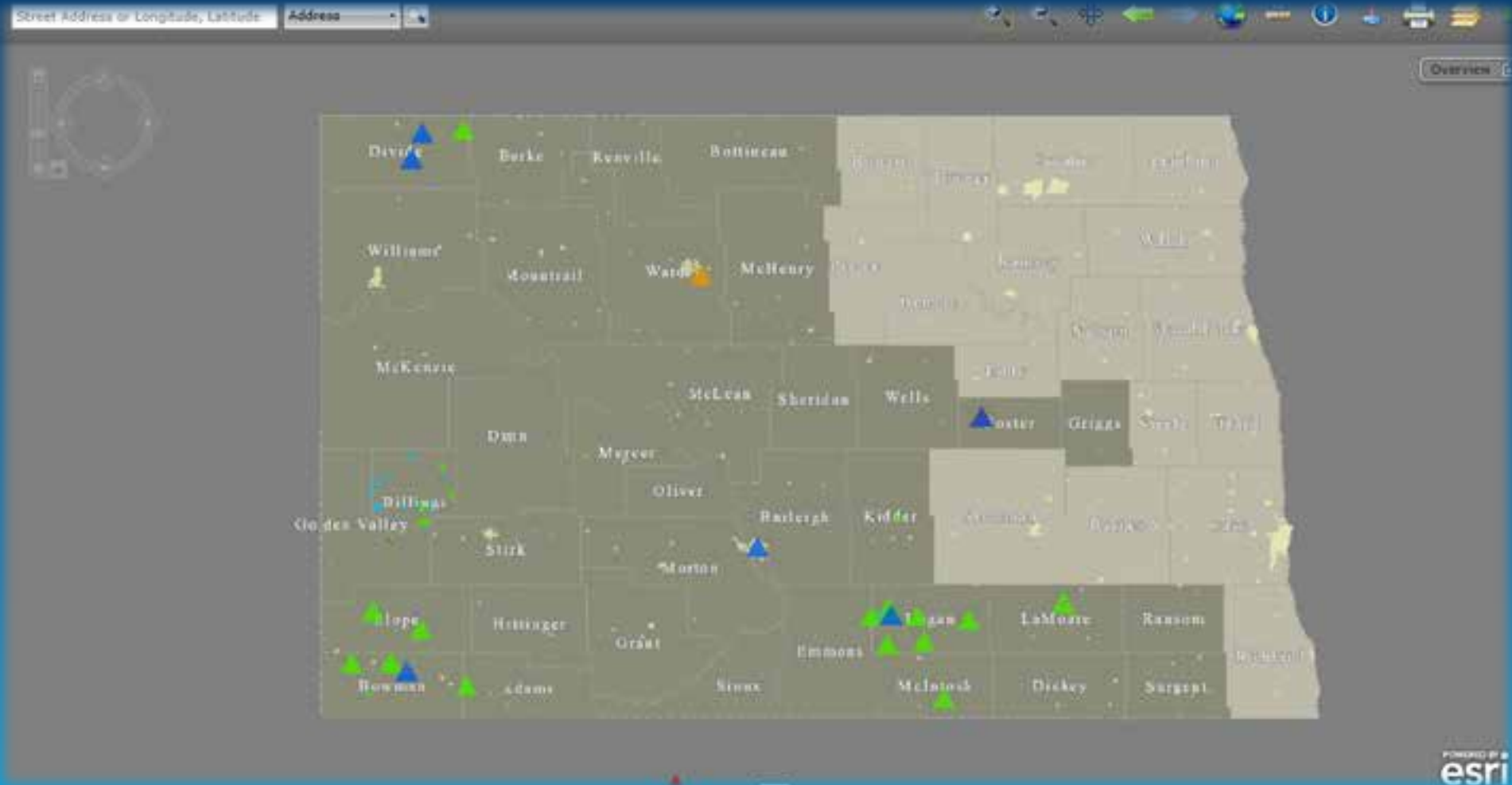
Maintenance Tools - GeoLynx Server

- Web DMS
- Change Requests

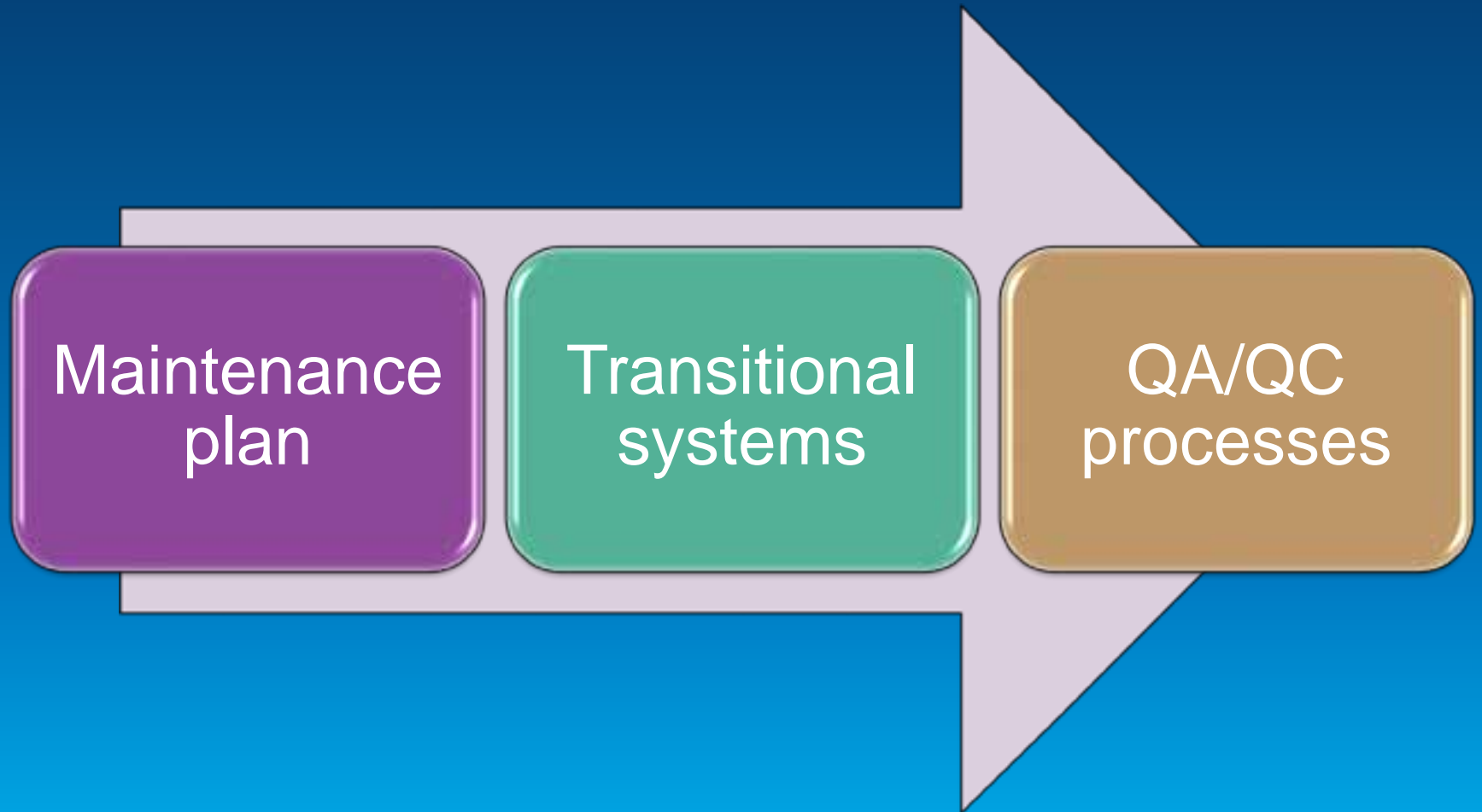
Major updates provided by sending GIS data to GeoComm/DES

Full dataset replacement

Maintenance tools



Next steps – maintenance for current and future uses



Next steps – boundary layer development

- PSAP boundaries (urn:service:sos)
- Law enforcement agency boundaries
- Fire service area boundaries
- Medical service area boundaries
- Other service boundaries
- Enhancement of existing layers

Lessons Learned



Phillip Peterschick, North Dakota DES



Jessica Beierman, GeoComm

