

***Ending Childhood Hunger
in the Summer
ESRI UC 2015***

Traci Mouw, MPH

Child Nutrition Programs

Food and Nutrition Service



Summer Food Service Program Basics

Federal funding (USDA)

State agencies administer the program

Summer meal sponsors

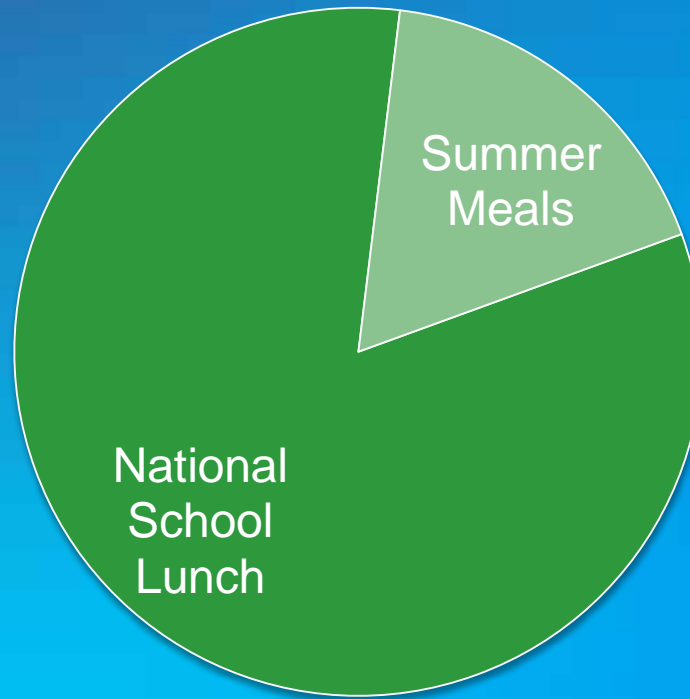
Summer meal sites (where kids eat)

- Low-income kids and teens 18 years old and younger
- Free, **nutritious** meals
- At safe and convenient sites in communities
- Operates when school is not in session



Child Nutrition Programs: Food and Nutrition Service

In 2014, over **21 Million children** received free or reduced priced meals during the school year



But during Summer 2014, we only served **3.8 Million eligible children** summer meals

Poor nutrition in the summer can hurt kids academically

Challenge to Summer Meals

How to connect meals to those in need?

- Children
- Families
- First responders
- Police



Helping families find meals

Summer Meals Site Finder

Find Summer Meals in Your Community Find

Nutritious free meals are available for children and teens 18 and younger at many locations throughout the nation throughout the summer while school is out of session. Use the mapping tool below to find a site near you. **New sites will be added as the school year ends and throughout the summer. Please check back often for updated information.**

To find sites serving meals near you, click on the arrow  on the map or follow these steps:

- 1** Click find sites
- 2** Enter address, city, state and zip code
- 3** Click locate
- 4** Click on any blue dot

Summer Meal Site Finder USDA



Find Sites Switch Maps

esri

About the site finder Developer Tools About USFP Feedback

<http://www.fns.usda.gov/summerfoodrocks>



Summer Meals Site Finder Features

- Available on mobile
- Don't need literacy or an address to find site
- Can print a list of sites
- Available in English and Spanish
- API and download feature for partners and State agencies
- If State site locators fail, can embed this tool for continuity of service

Considerations

- Schools close at different dates
- Data reporting not mandatory



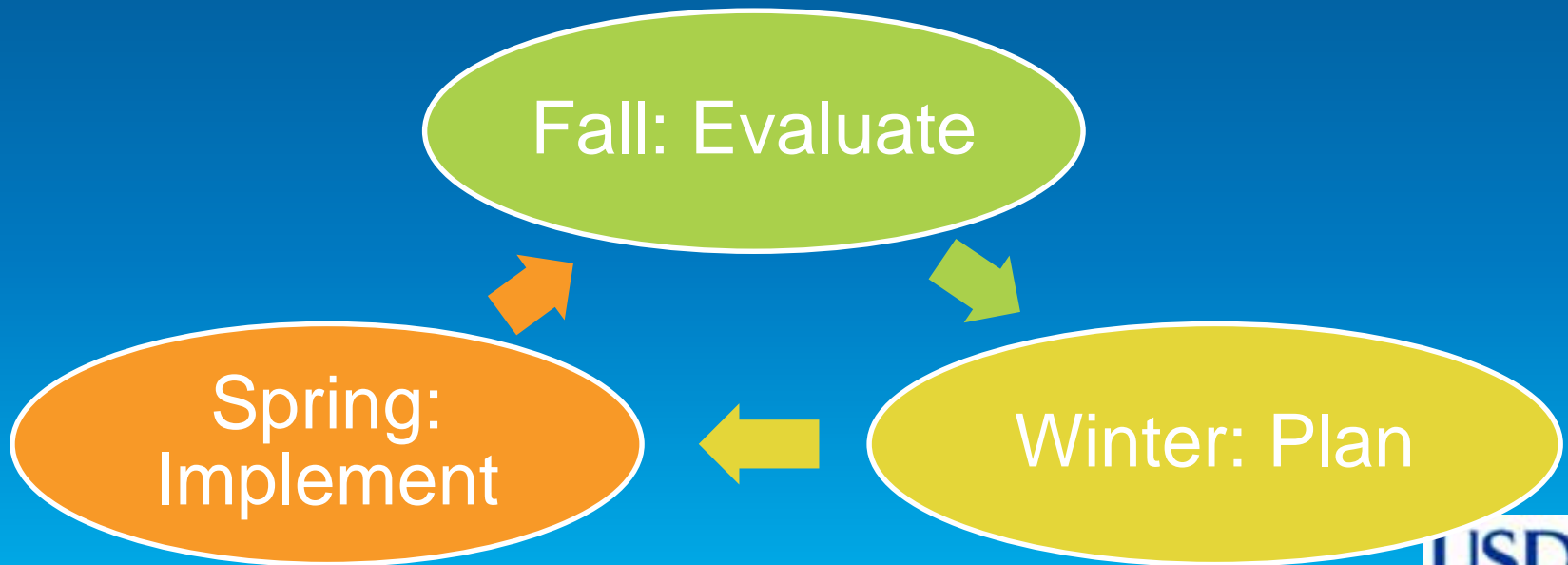
Additional Challenges for Summer

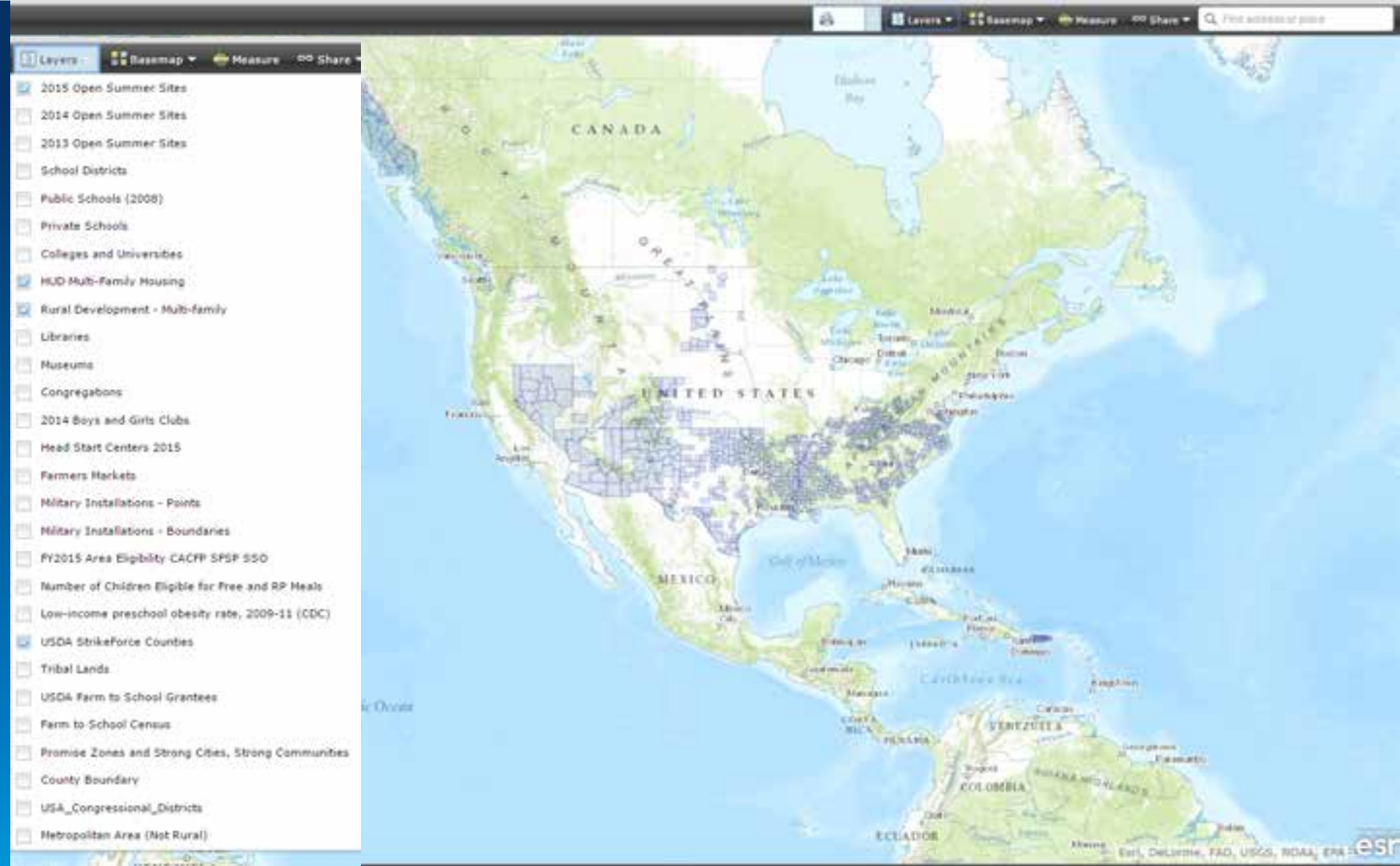
- **Identifying gaps and Planning**
- **Finding Partners**
- **Summer School Ending**
- **Data reporting**
- **Deploying limited resources**
 - **No federal school structure**
 - **No school buses**
 - **3 month operating periods**



Capacity Builder

- Available nationwide
- GIS software/expertise is not needed
- Can help with planning year round
- Can be used in real-time at planning meetings

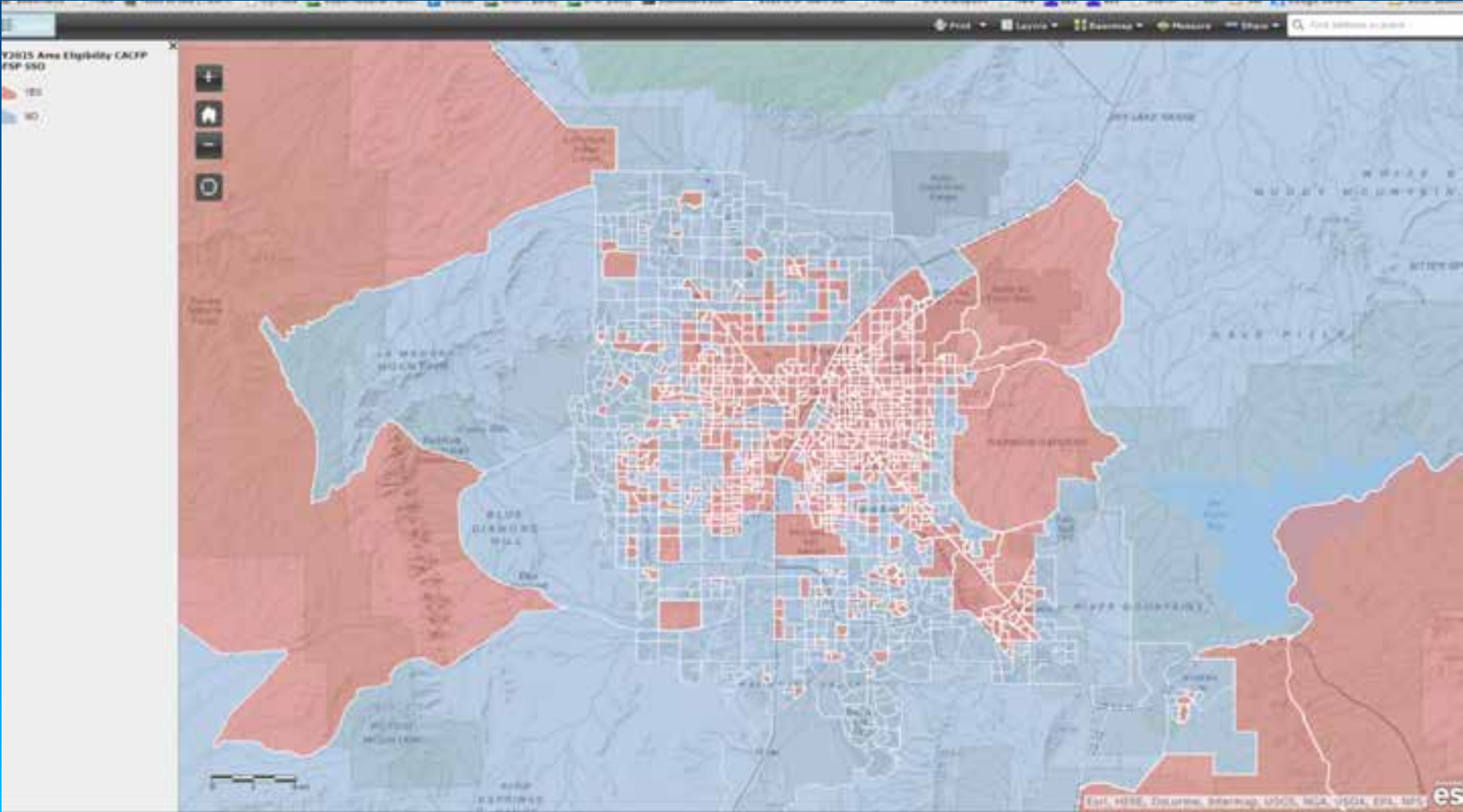




<http://cacfp-sfsp.maps.arcgis.com/apps/OnePane/basicviewer/index.html?appid=d37b85538642426c903758752132da69>

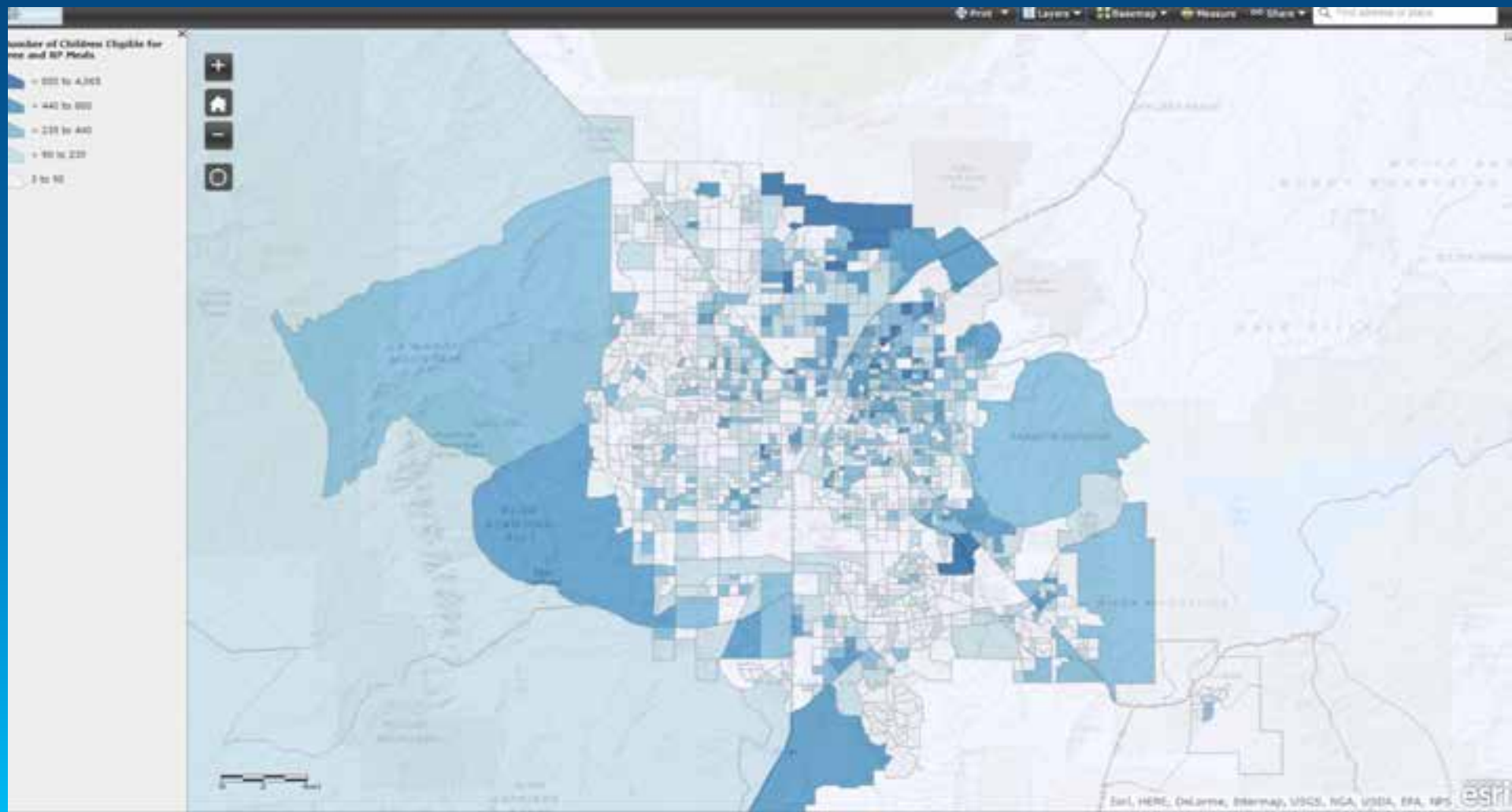


Common Challenges: Identify gaps Eligible Areas > 50% Poverty (relative measure)

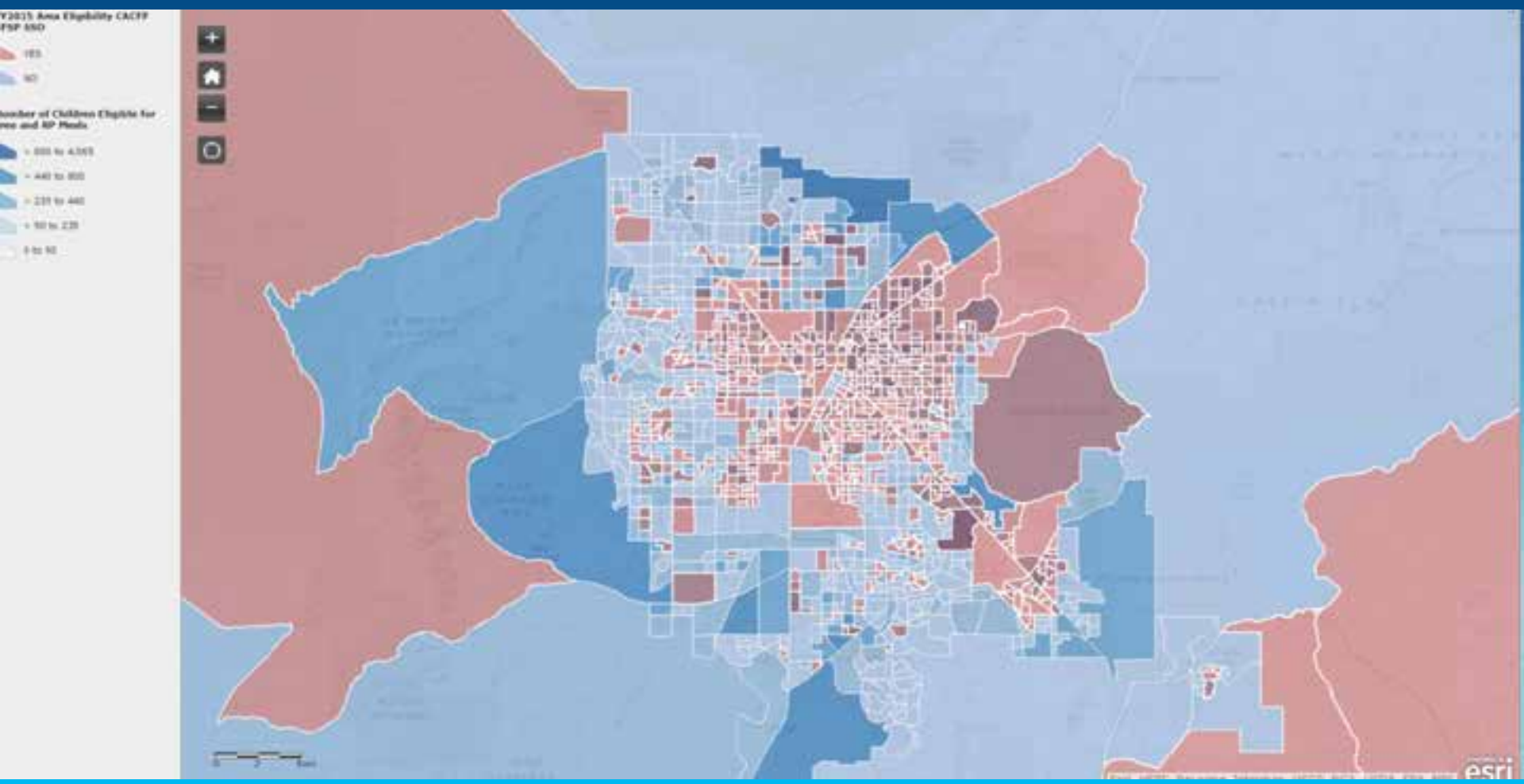


Common Challenges: Identify gaps

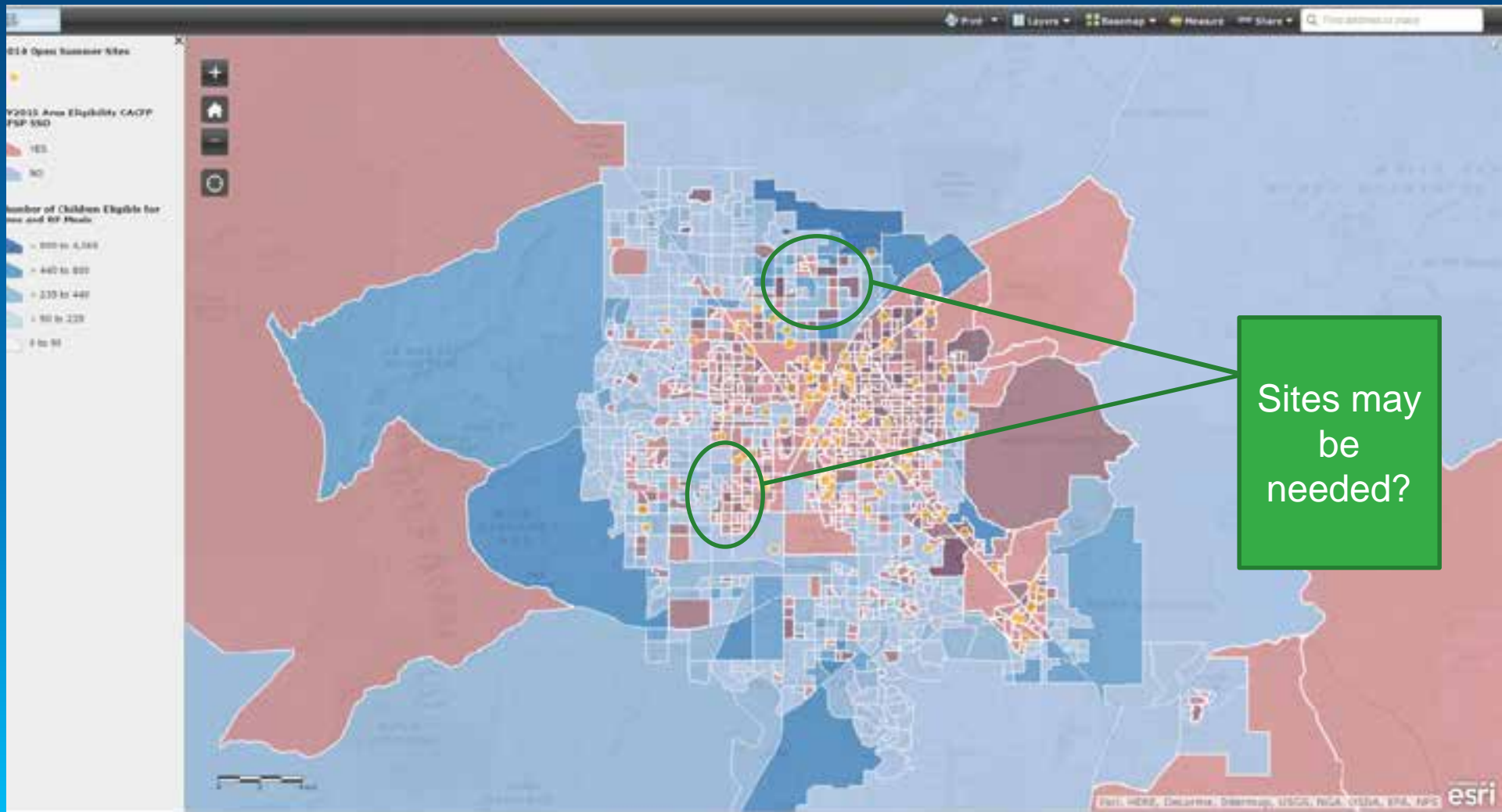
Number of Eligible Children (absolute measure)



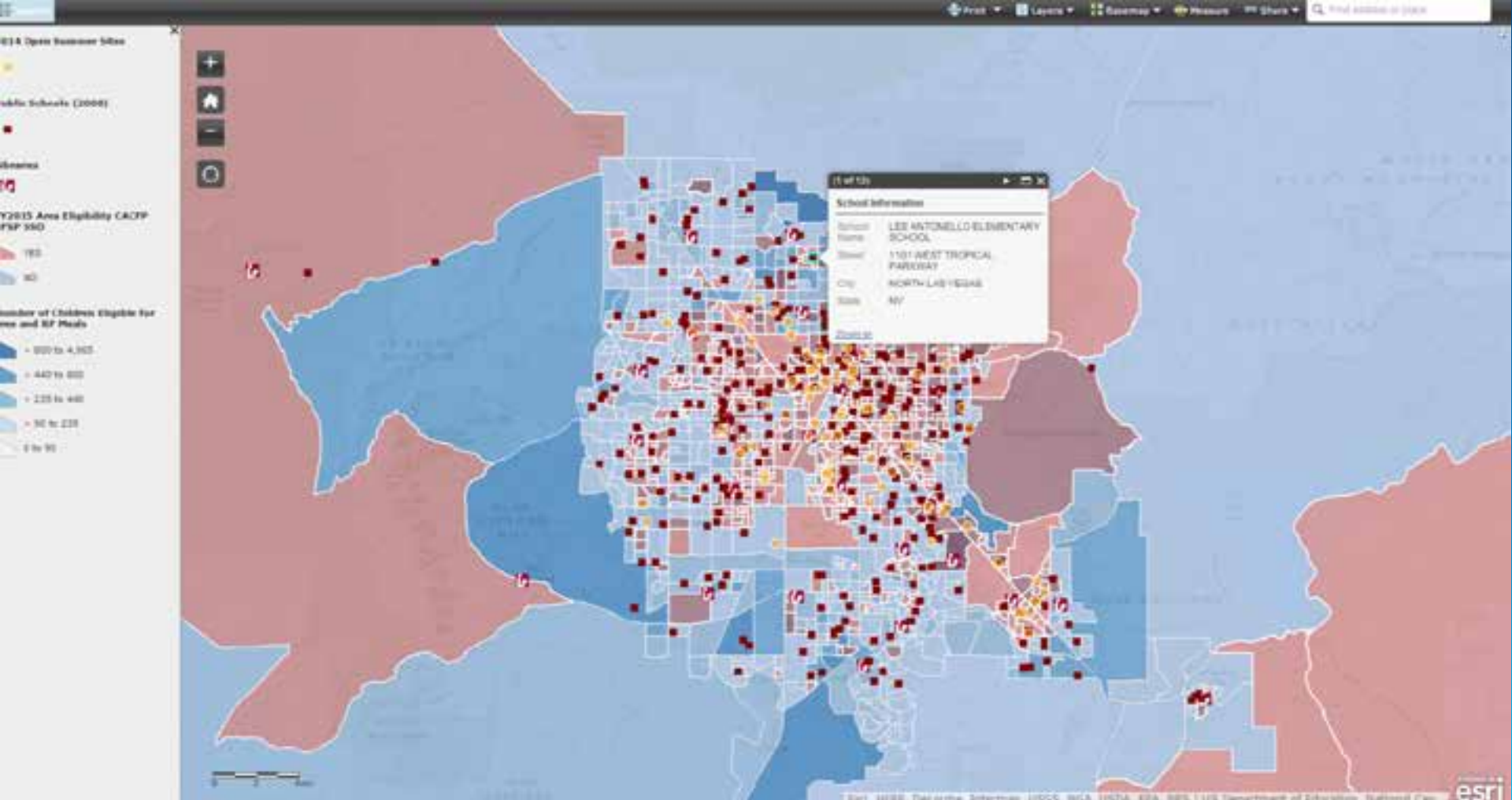
Common Challenges: Identify gaps Absolute and Relative Poverty Measures Combined



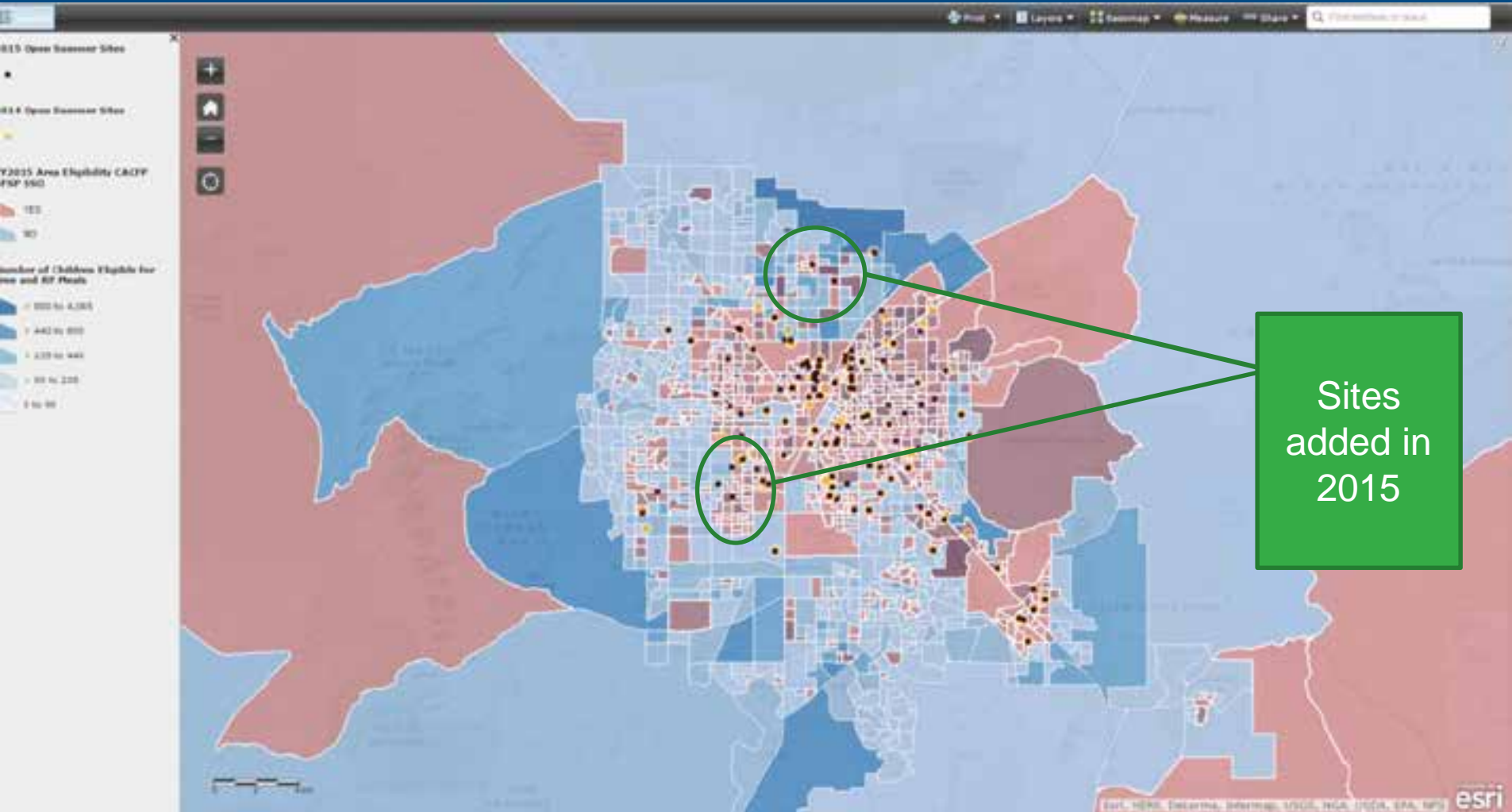
Common Challenges: Identify gaps Where were sites



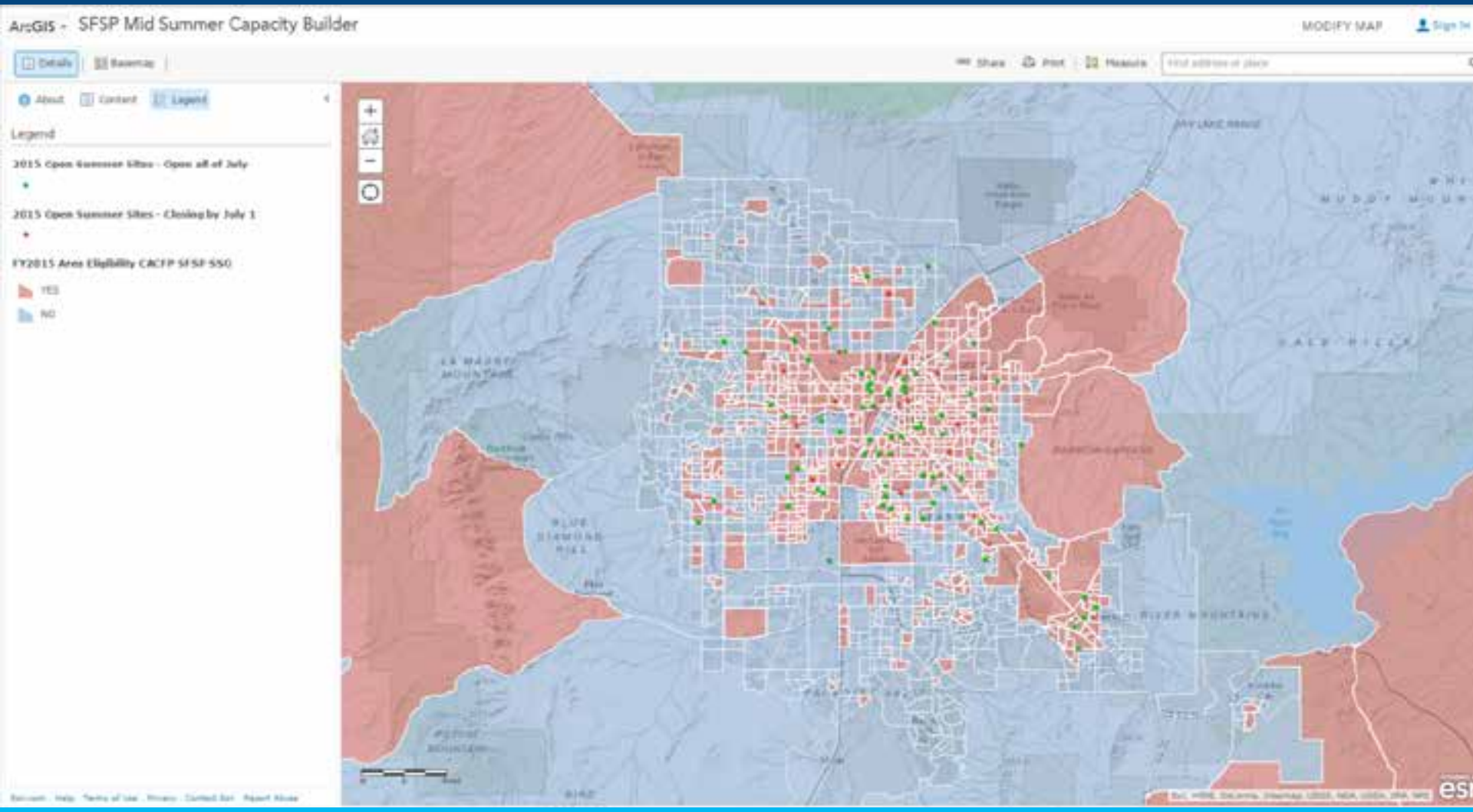
Common Challenges: Identify Partners Schools and Libraries



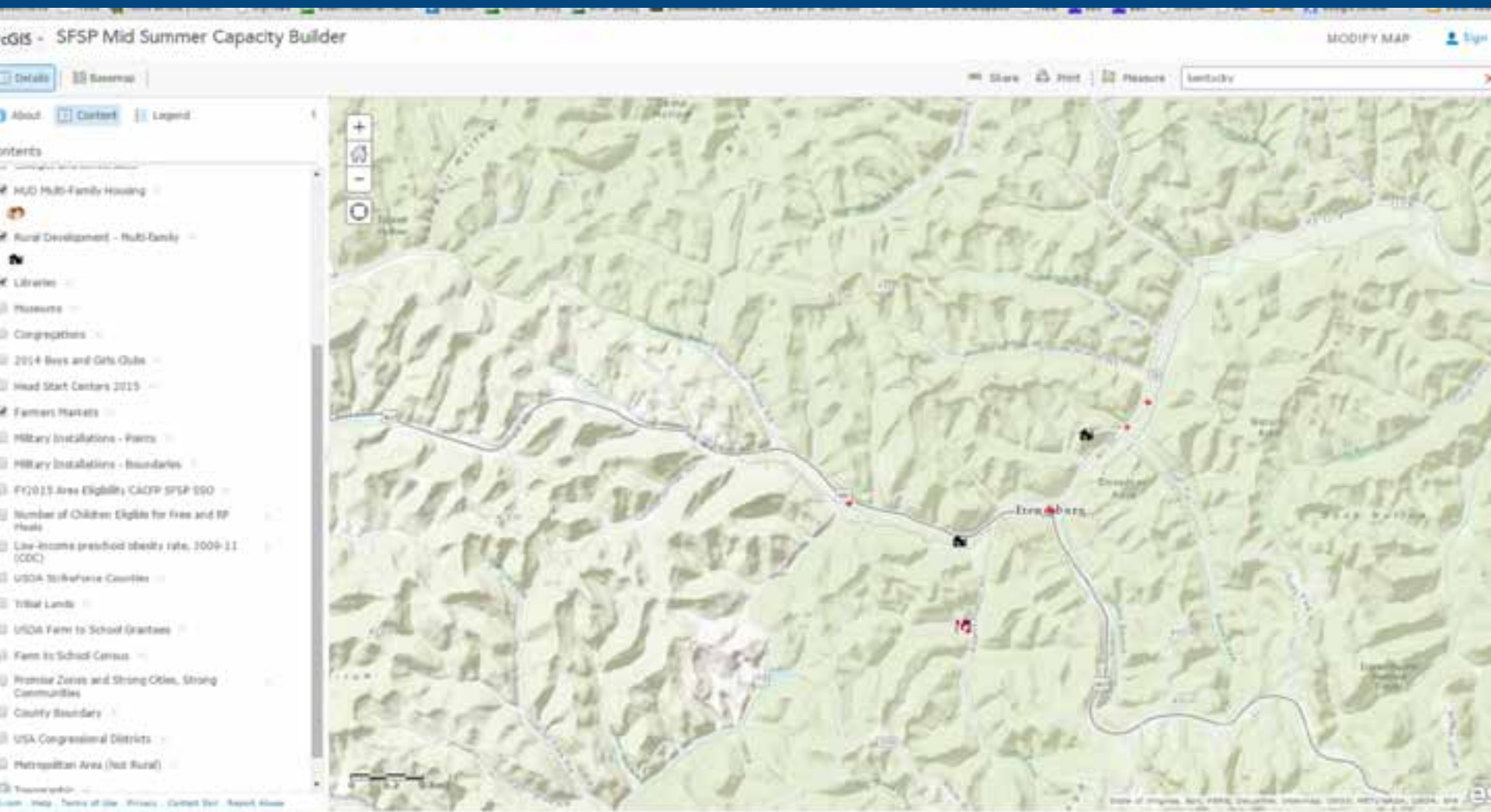
Common Challenges: Identify Partners 2015 Expansion



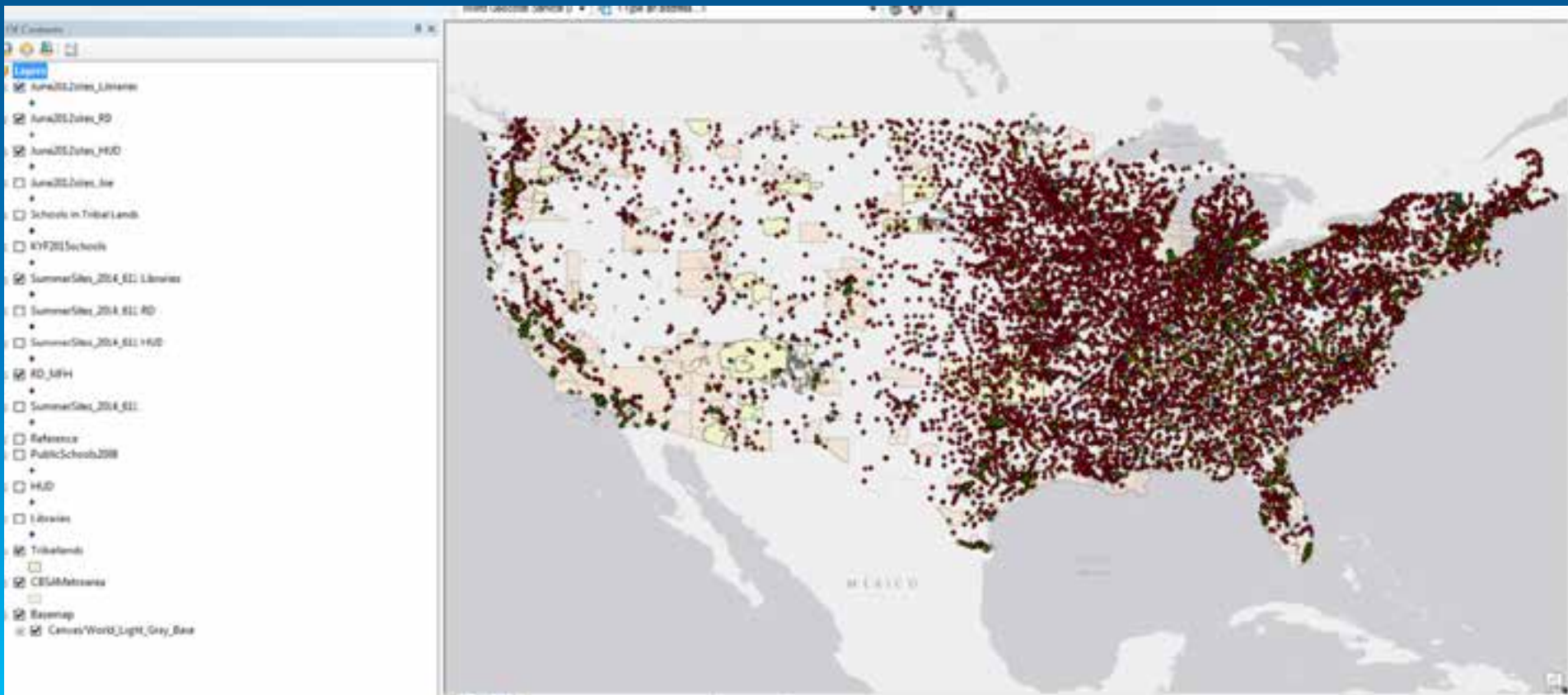
Common Challenges: Summer School Ending



Common Challenges: Summer School Ending



Common Challenges: Data Reporting



- <http://www.fns.usda.gov/capacitybuilder>



Thank You

Traci.Mouw@fns.usda.gov

