



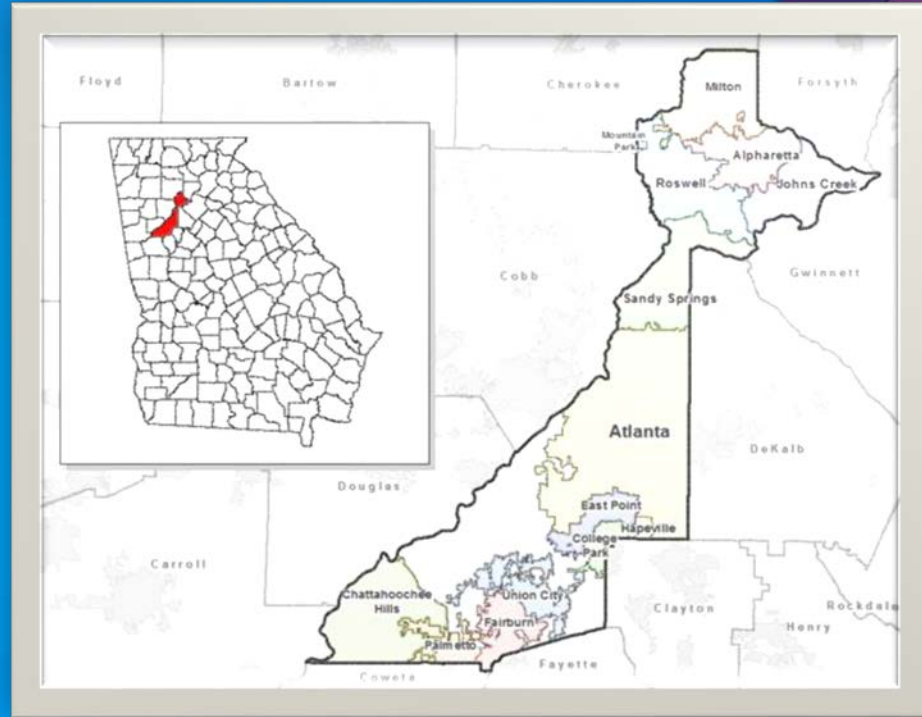
# Developing an Interior Space Model for Government Facilities

Farrah Prewitt

Fulton County Government IT Department  
GIS Division

# Topics

- **Background of Fulton County**
- **Overall purpose of creating this Interior Model**
- **Model Design and its evolution from 3D model to a 2D model**
- **The implementation for major Fulton County Facilities**
- **The integration into the following applications and processes**
  - **Framework for Asset and Inventory Management**
  - **Floor space management and evacuation planning**
  - **Work order Management Systems (BLLIS, City Works)**



# About

## Fulton County Georgia

# Developing an Interior Space Model for Government Facilities

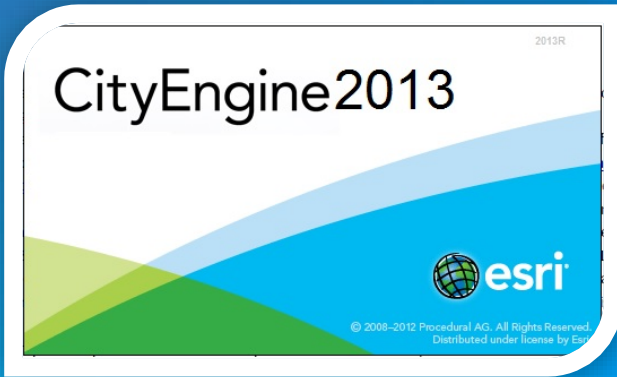
- **Fulton County (GA) has implemented a building interior space model in response to a growing need to track assets, to plan IT infrastructure, floor space management, and evacuation plans.**

## Government Center

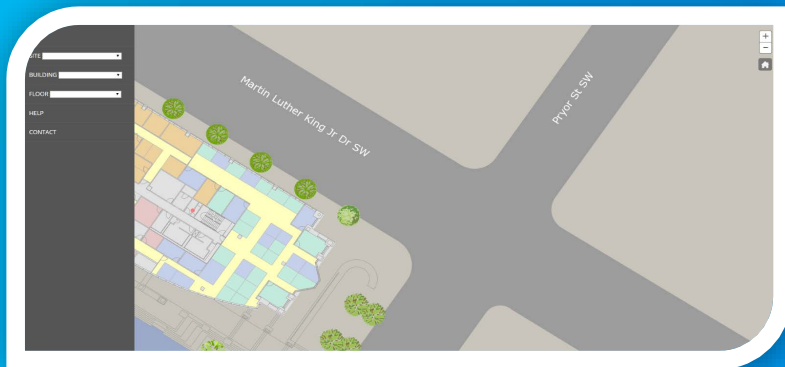


## Justice Center



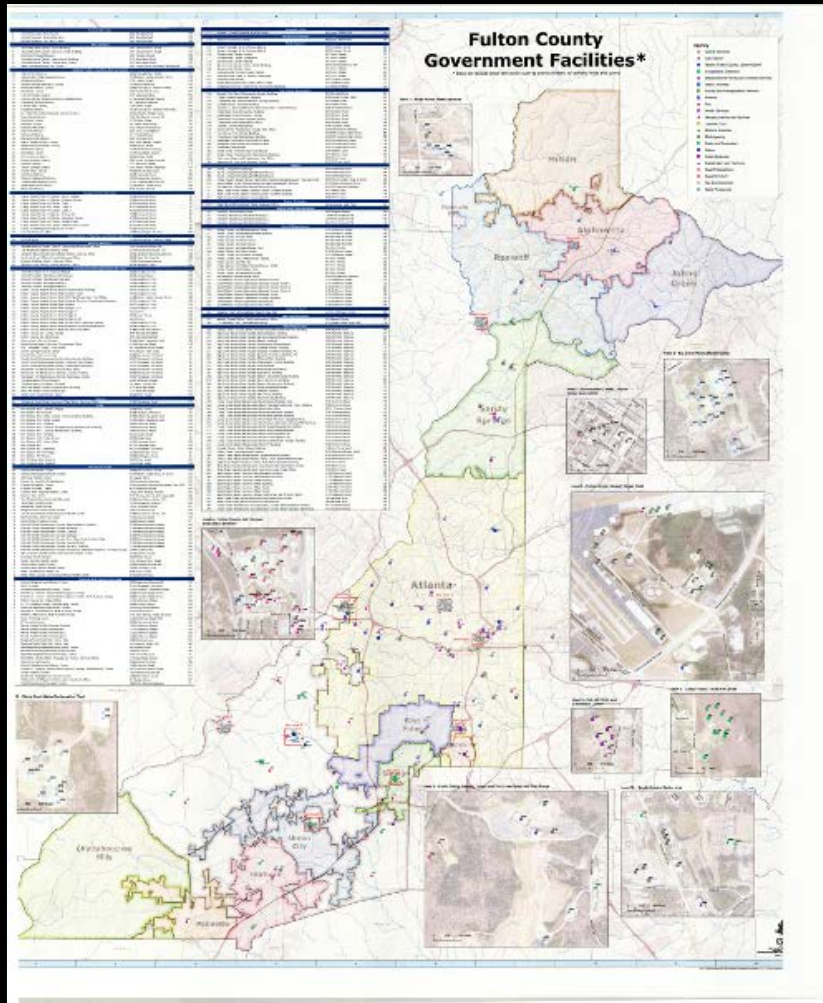


# Model Design 3D vs. 2D and The CAD that got us there





# The Implementation of Fulton County Facilities





# Applications

## Assets Collection

- Security Cameras
- Security Access
- Photosphere and Panoramic images of common areas





# Applications

## Floor space Management

- Spatial Directory

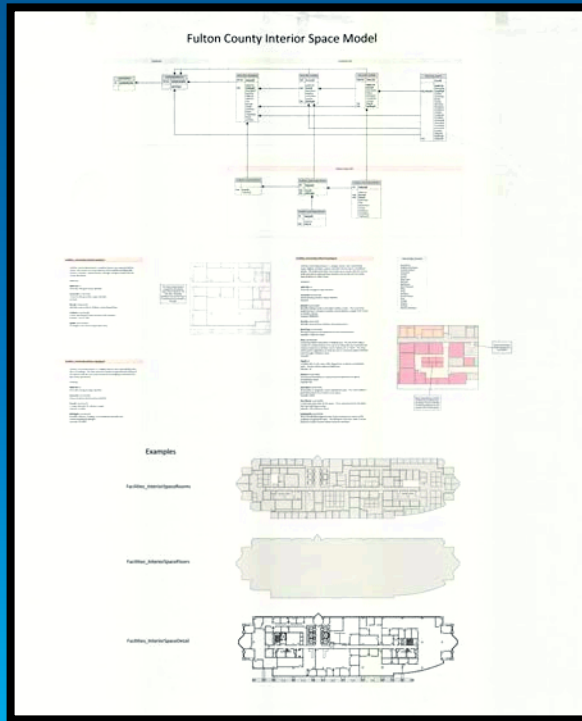
## Evacuation Planning

- Current Infrastructure



# Applications

Work order Management Systems  
BLLIS & City Works



The background features a vibrant blue gradient with abstract geometric shapes in shades of purple and yellow. A yellow shape with a grid pattern is prominent in the lower-left quadrant, overlapping a purple diagonal band.

Thank You  
Any  
Questions?

# Contact Information for Fulton County IT/GIS

Farrah Prewitt  
404-612-2716

[farrah.prewitt@fultoncountyga.gov](mailto:farrah.prewitt@fultoncountyga.gov)