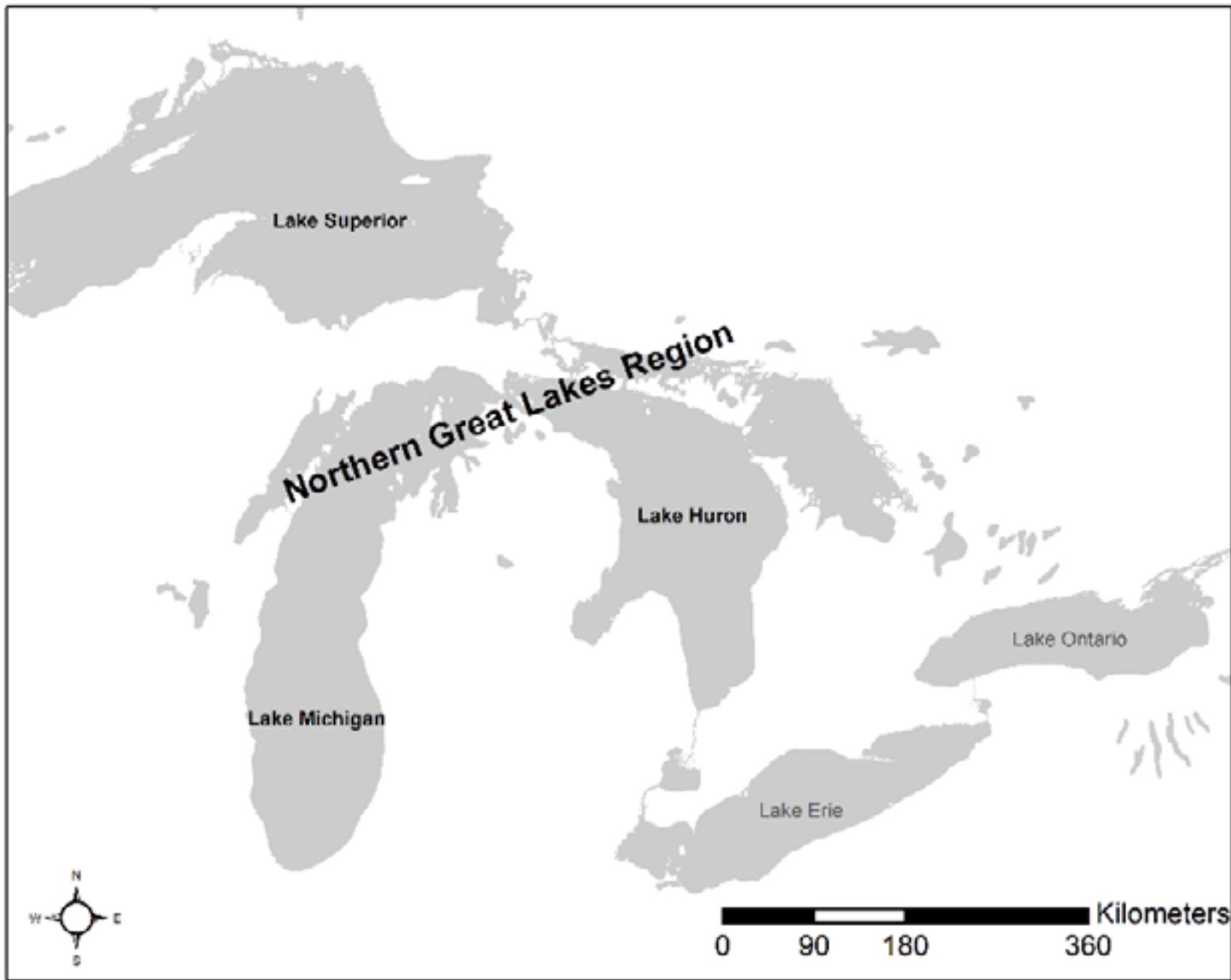


Movement as Intimate Encounter: Local Connectivity in Past Landscapes

Meghan Howey, Associate Professor and Chair

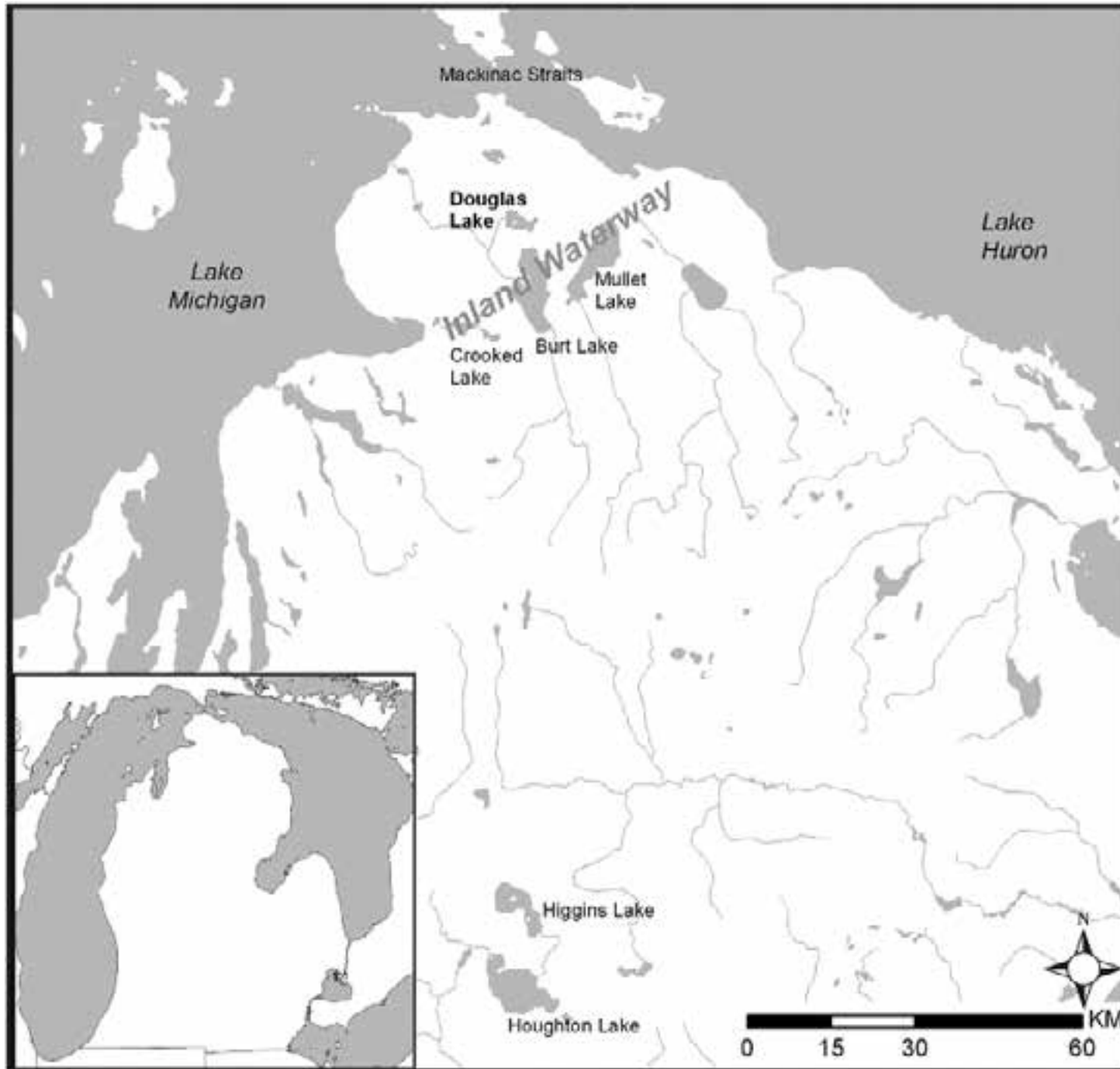
University of New Hampshire Anthropology Department









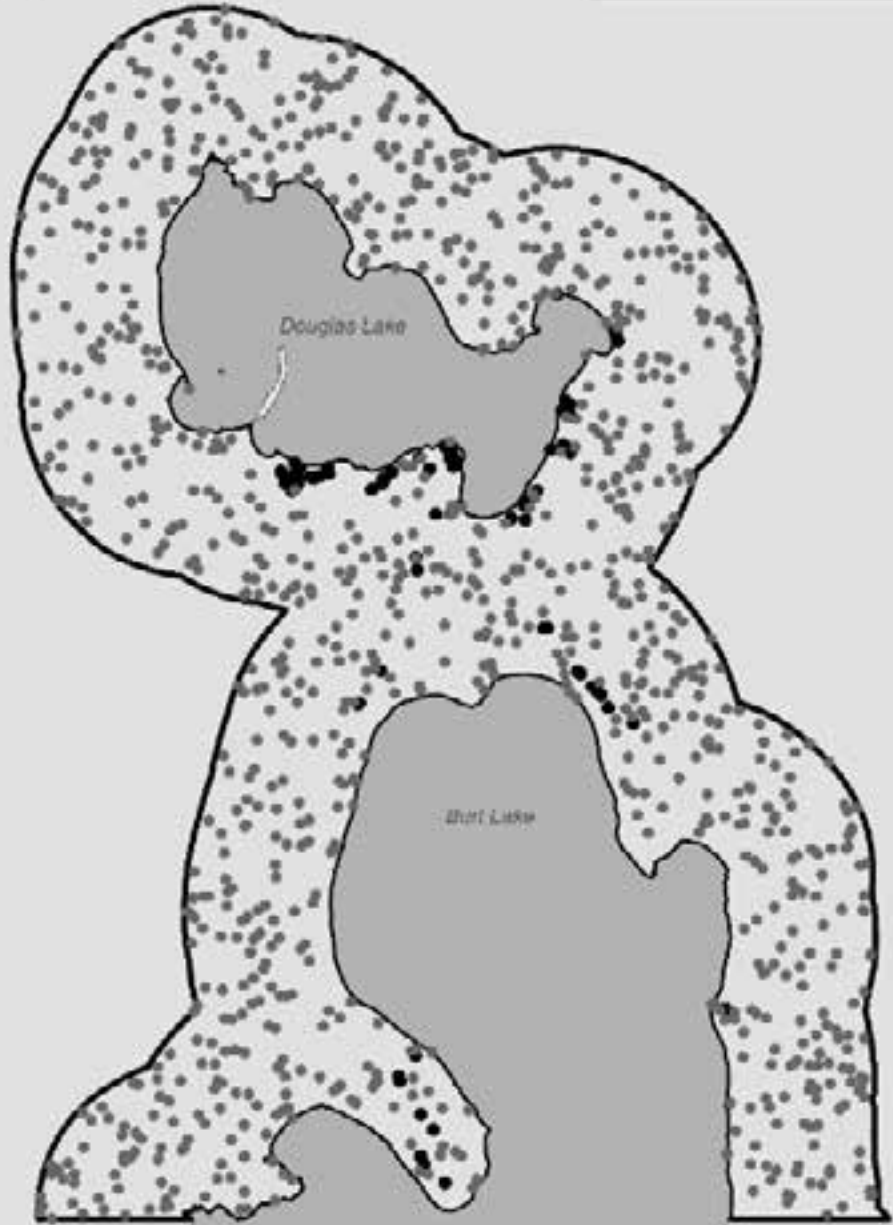


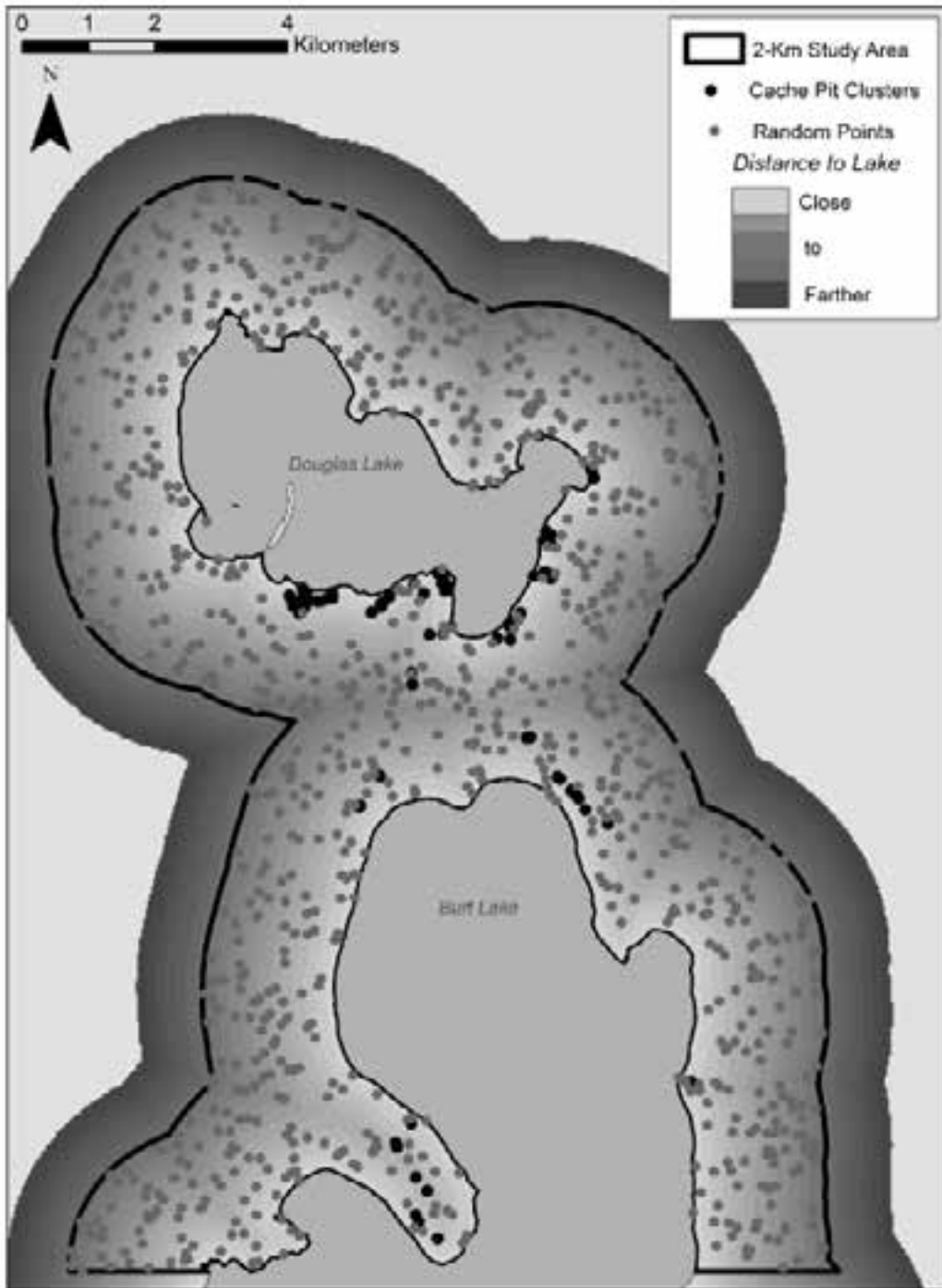


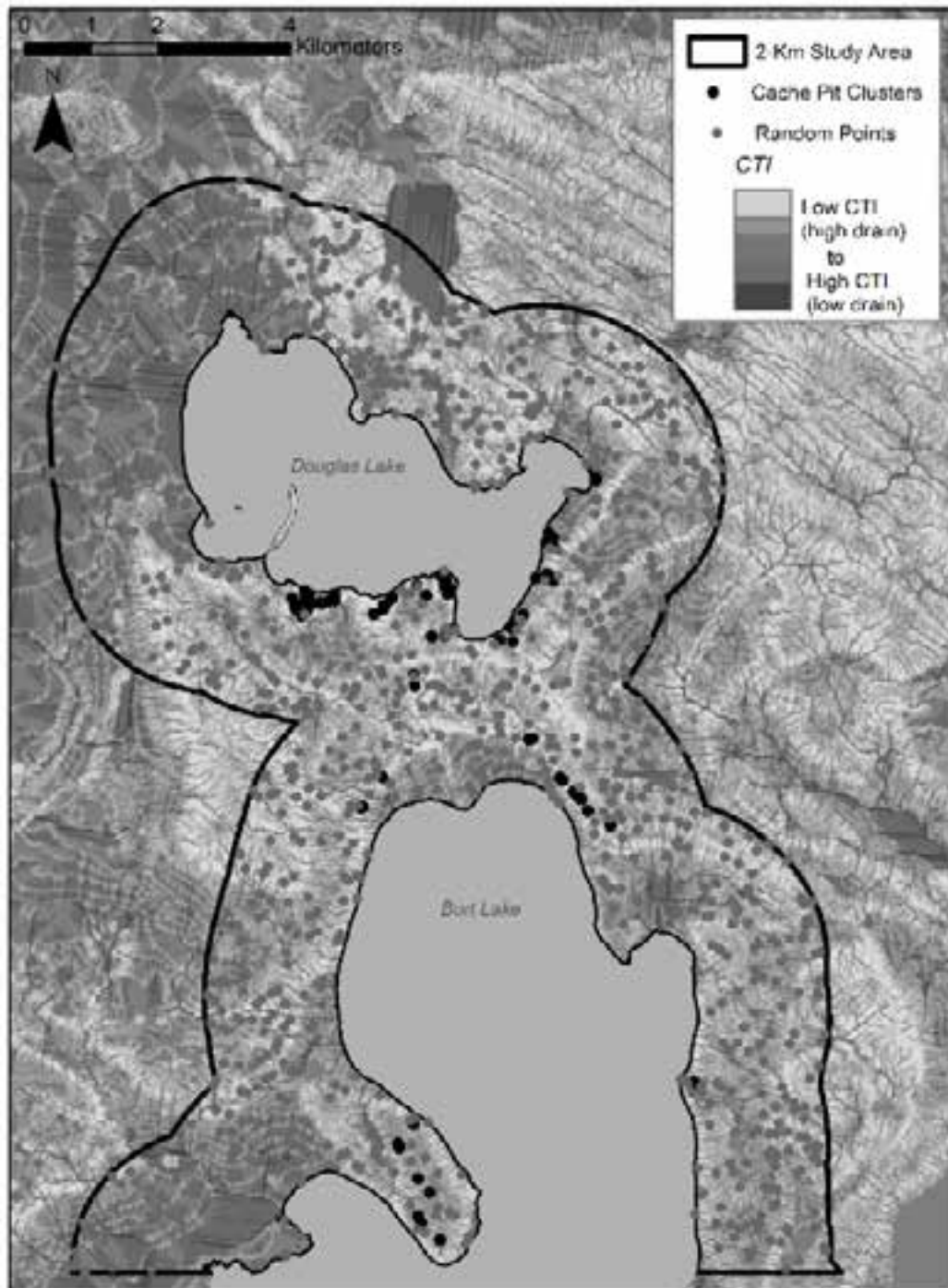
0 1 2 4 Kilometers

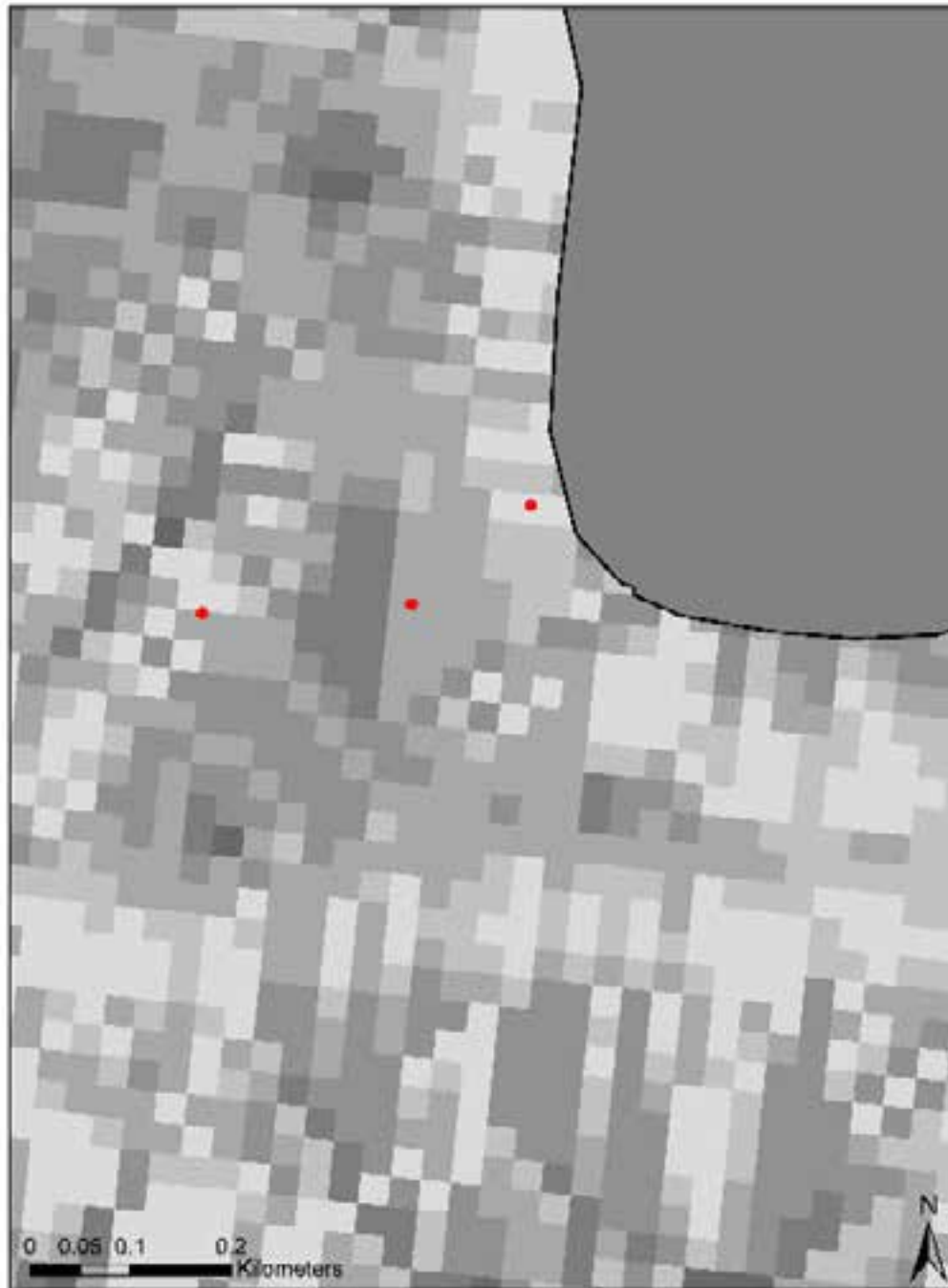


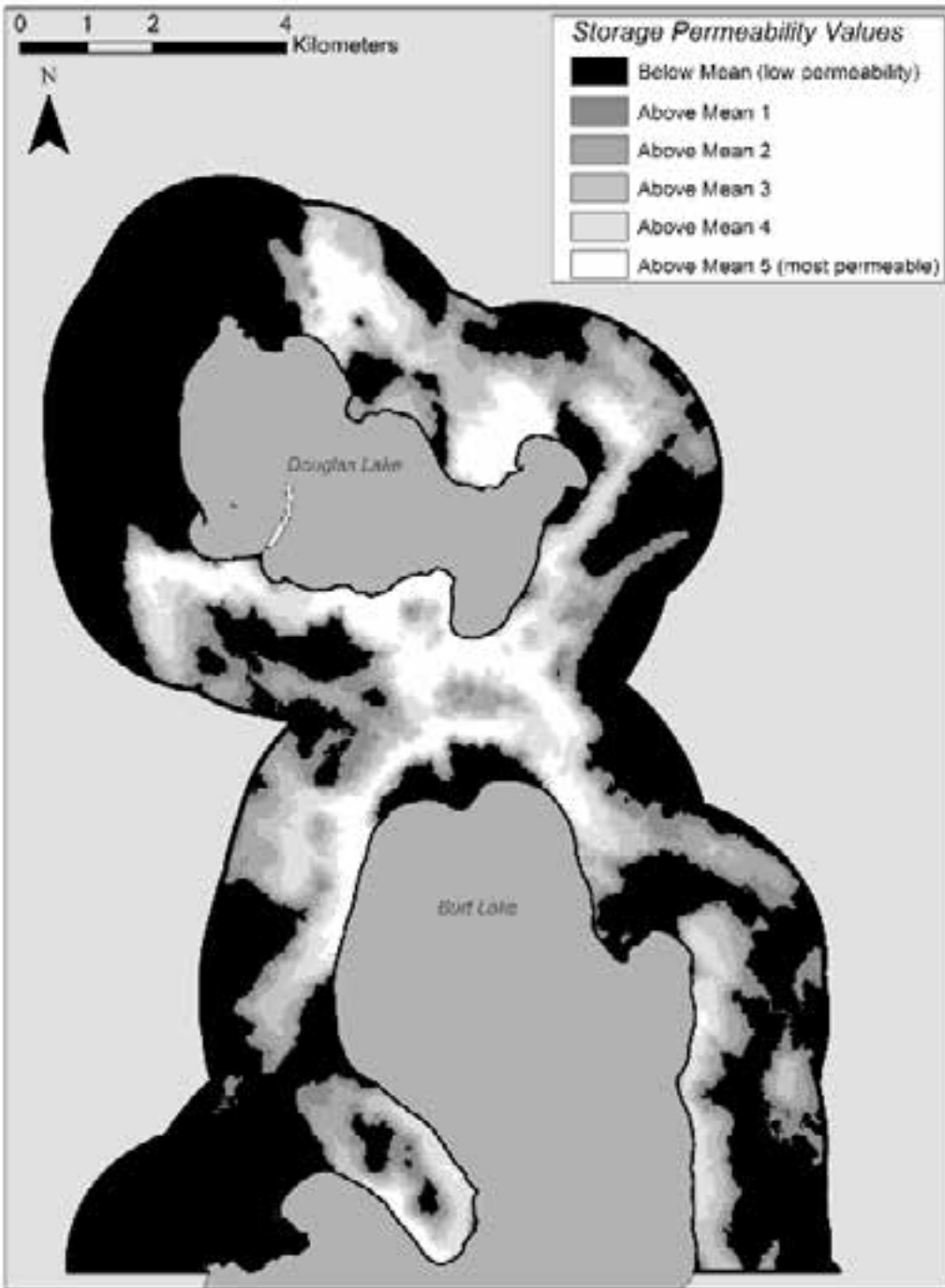
- 2-Km Study Area
- Cache Pit Clusters
- Random Points

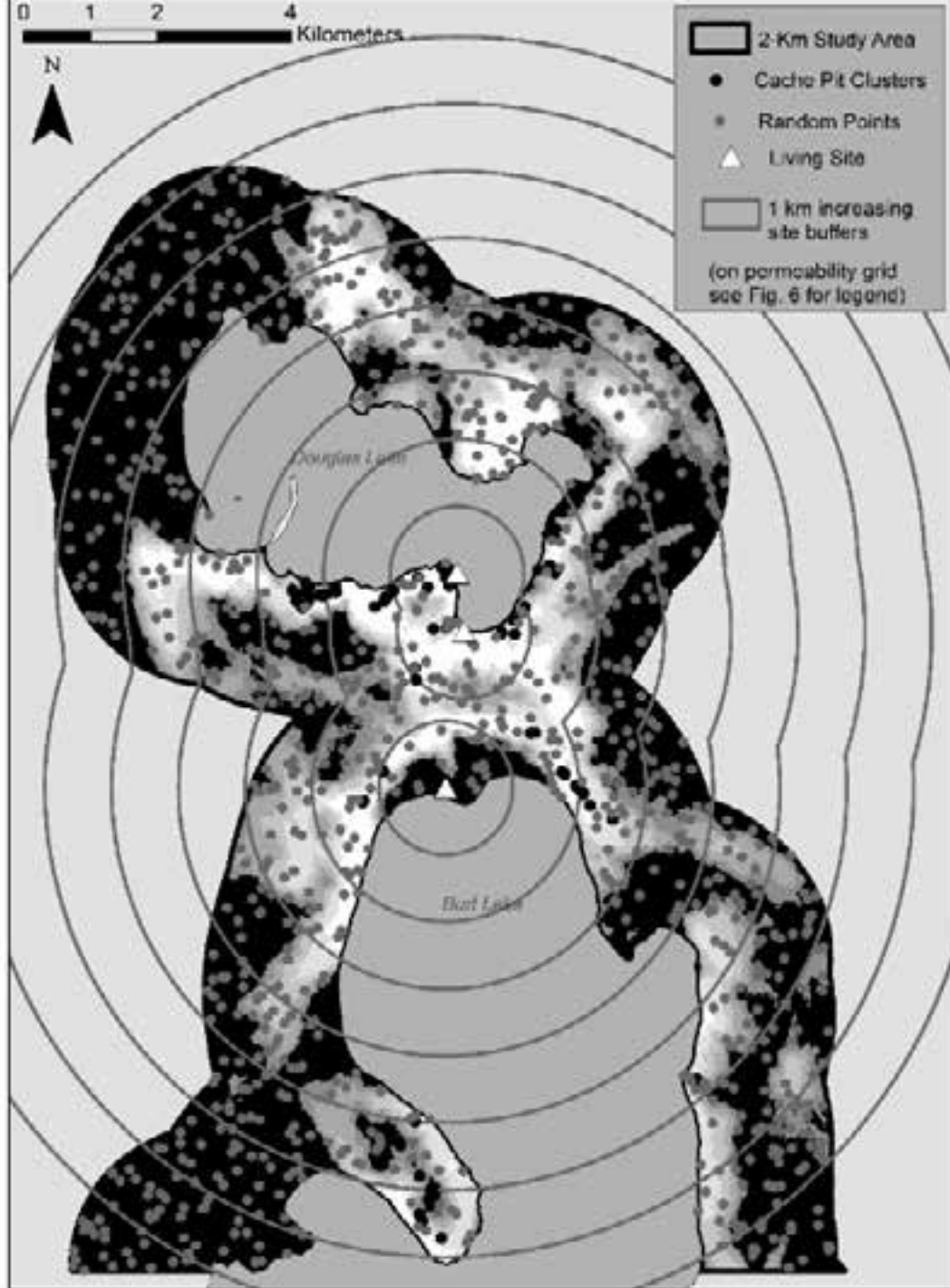












Mean Permeability Value by Distance



Number of Cache Pit Clusters Added at Increased Distance Buffers from Living Sites

