

Integrating GIS and UWAM to Optimize Electric Field Operations

Nathan Heick, Antonio Rosso, Vijay Mali

City of Riverside, California

July 23, 2015



Agenda

- **Business Drivers**
- **Application Architecture**
- **User Interface and Features**
- **Value Derived**



Business Drivers



Previous Workflow

- Print UWAM SR report to see the day's work.
- Print map and mark up locations to visit.
- Go out to field.
- Perform work.
- Take notes of work done and parts used.
- Return to office.
- Manually enter SR notes and finish UWAM SRs.
- Manually create stock checkout requests to replenish used stock (not tied to SRs).

Drawbacks

- Time consuming
- Error prone
- Inadequate data captured

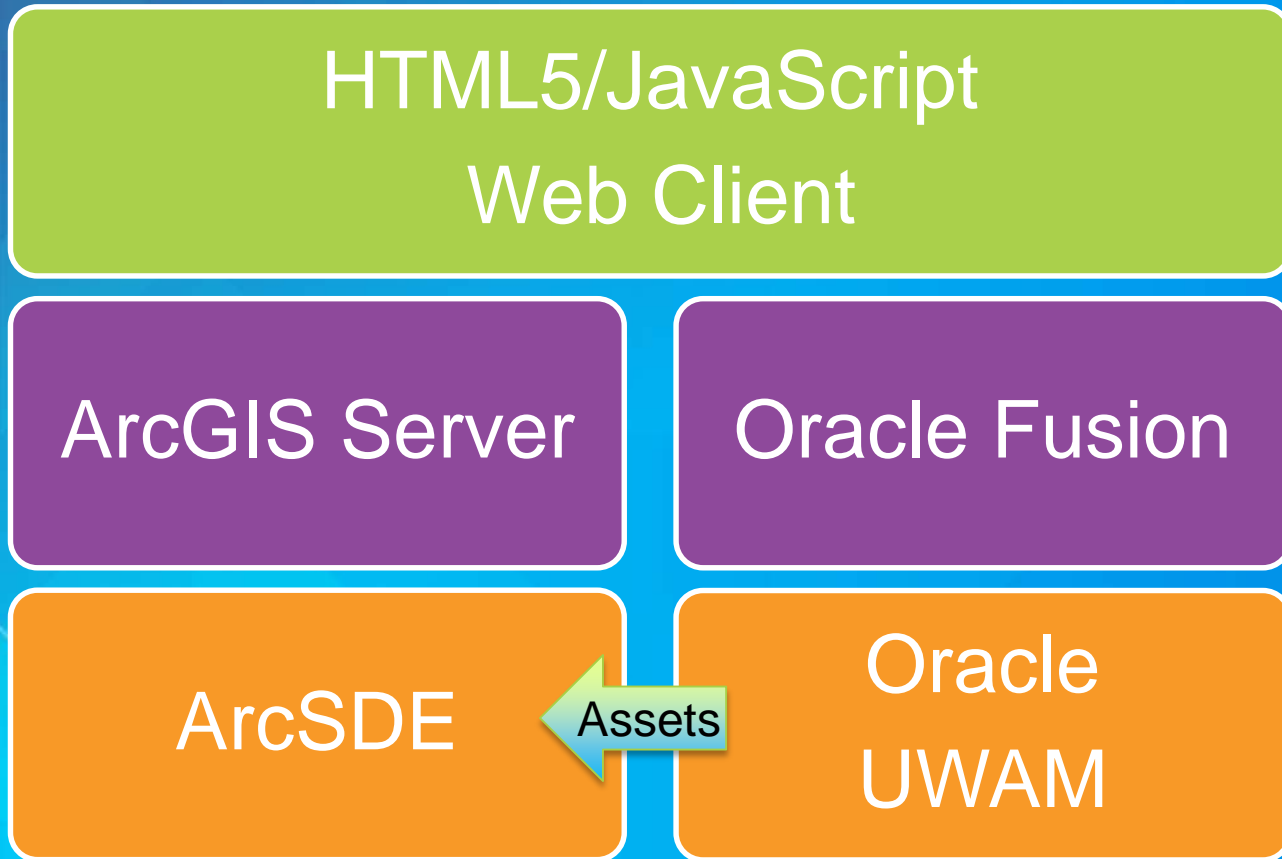


Business Drivers

Application Architecture



Architecture Diagram



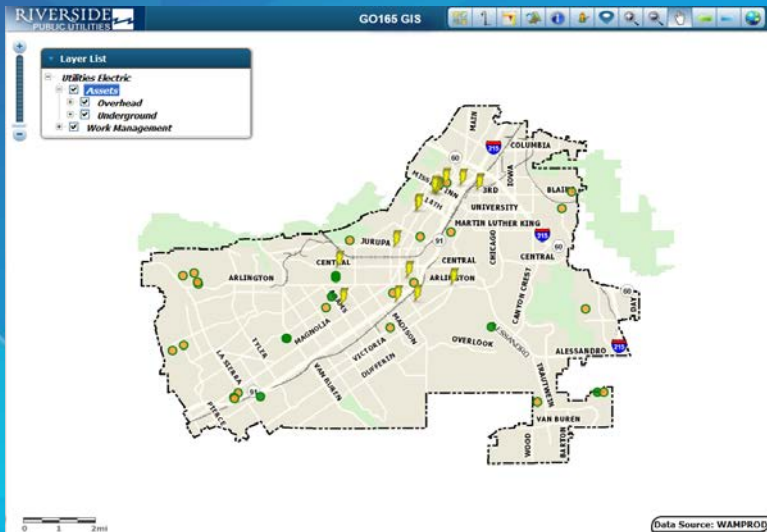
Application Architecture

Technologies Used

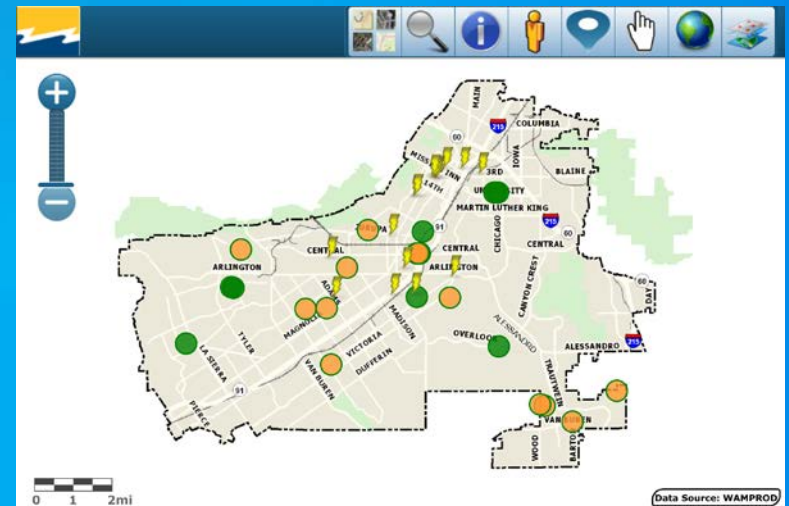
- **HTML5/JavaScript Web Client**
 - ArcGIS API for JavaScript
 - jQuery/Dojo/Media Queries/CSS3/C#
 - JavaScript Libraries (moment.js, notydefault.js, etc).
 - Google Maps API – Street View
- **Python Script to Load Asset Data from UWAM to ArcSDE**
- **ArcGIS for Server Web Services**
- **UWAM Web Services**
 - PL/SQL Backend
 - Java-Based REST Endpoint

User Interface & Features

Responsive UI



Desktop UI



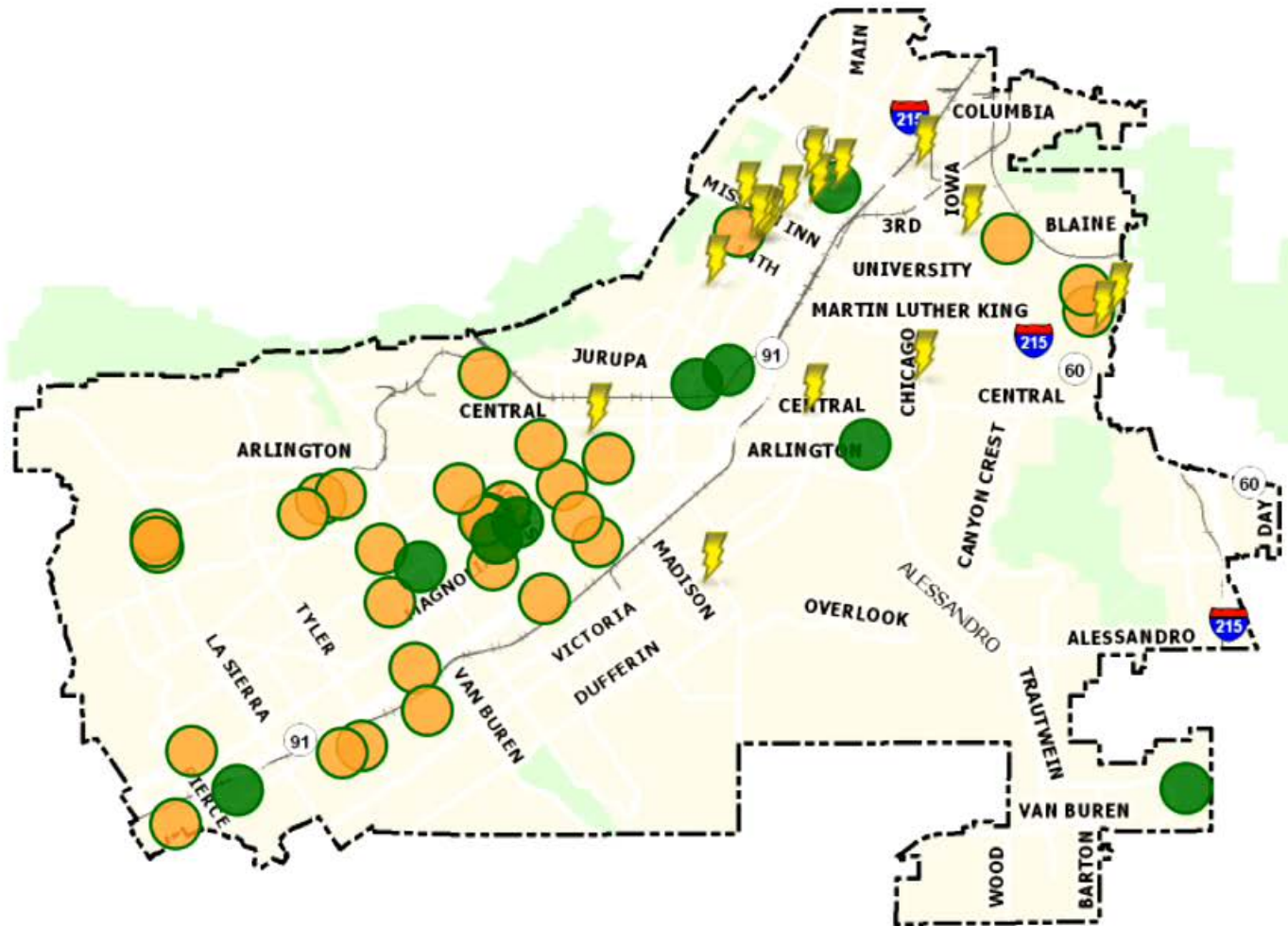
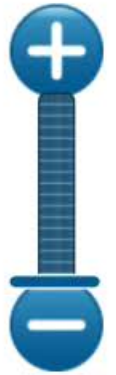
Mobile UI

User Interface & Features

Demo

User Interface & Features





Value Derived



Organizational Benefits

- Provides more accurate asset information on demand.
- Faster, easier, and more accurate work and parts logging.
- Valuable BI.
- Cost tracking by work task.
- Lifecycle cost tracking by asset.
- Faster turnaround and increased customer satisfaction.
- Supports 50 office workers and 12 field workers.

The background features a vibrant blue gradient. On the left side, there are several overlapping geometric shapes in shades of purple and yellow. One prominent yellow shape contains a faint, grid-like pattern, possibly representing a map or data visualization. The overall design is modern and abstract.

Questions?