



# Community Parcels

Chris Buscaglia

# Agenda

- Introduction
- Solution Offering
- What's Next
- Your Feedback



# ArcGIS as a Platform

Simple, Open, and Configurable



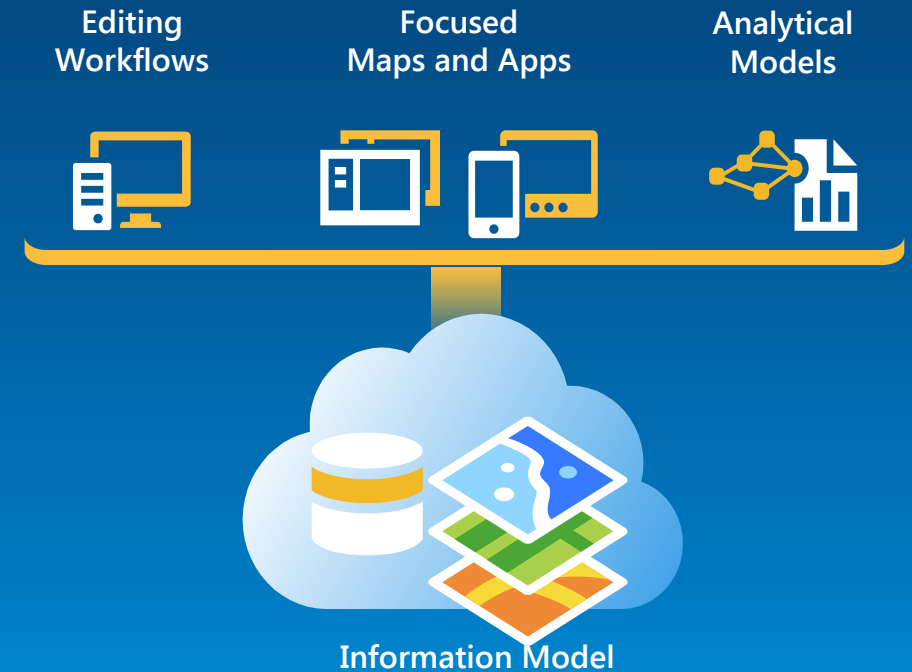
Making Mapping and GIS  
Available Across Your Organization

*Transforming the Role of GIS*

# ArcGIS for State and Local Government

Esri solutions for government customers

- Series of useful maps and apps focused on government work
  - Configurable and extensible
  - Freely available and fully supported
- Community of users
  - Best Practices / Implementation Support
- Network of Esri Services and Partner offerings
  - Help users implement, sustain and enhance



.....Available on-premise or in the cloud

# ArcGIS for State and Local Government

Our mission is to help you.....

- Deliver maps and applications quickly throughout your organization
- Stay current with future releases / avoid legacy technology
- Deploy a geospatial platform that can be leveraged by many
- Leverage the collective knowledge of the entire community
- And do this with....less staff, budget, and technical expertise

# Land Records Maps and Apps

## Constituent Engagement

Tax Parcel Viewer  
Public Notification

Floodplain Inquiry

## Value Analysis

Value Analysis Dashboard  
Tax Reverted Property

Photo Survey (Aug 2015)

## Maintain Assessment Roll

Tax Parcel Editing  
Deed Drafter  
Tax Map Book

Public Land Survey Editing

## Geo-enable Assessment and Tax Office

Model ArcGIS Online Organization  
Community Parcels  
Standard integration patterns (CAMA, Tax Receivables, etc.)



# Communities

Simple Information Products



Showing property ownership for permitting and regulatory needs....



Showing property value for emergency management and revenue needs....



Showing property use for land use and economic development needs....

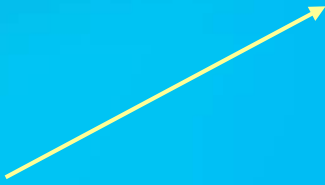


Community Parcels

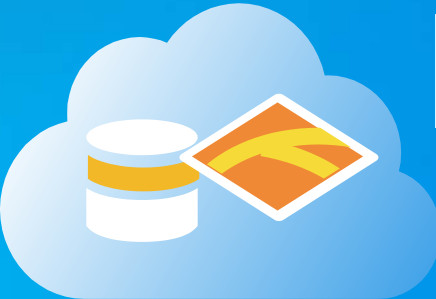
Containing authoritative data from local data providers

# Community Parcels

How does it come to life?



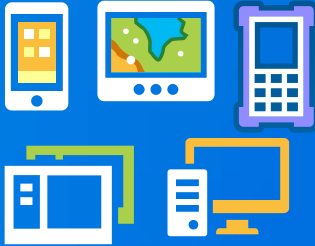
Authoritative parcel data from data custodians



Single Community Parcel layer



Seamless parcel information products



Leverages Esri's parcel data management solution...  
....and supports other data management workflows



# Community Contributor Workflow

Ex. City to County, County to State

Step 1 : Configure Tool



- Single Input Parcel Layer
- Local FIPS code
- Fields to be mapped
- AGOL credentials
- Save settings (for future runs)

Step 2: Run Tool



- Run Manually – Ad-Hoc
- Schedule

# Community Aggregator Workflow

Ex. County/State performs aggregation

## Step 1 : Configure Field Mapper



- Single Input Parcel Layer
- Local FIPS code
- Fields to be mapped
- Save settings (for future runs)



## Step 2 : Configure Aggregator



- Multiple Input Parcel Layers
- Save Settings (for future runs)

## Step 3 : Run Tools



# It's a Process

Continuously Evolving Solution Offering

- Photo Survey (Aug 2015)
- Land Bank
- Real Estate / Comparable Viewer
- Next Generation Tax Parcel Viewer
- Appraisal / Assessment Maps
- Community Control

...as we expand community engagement and develop partner and professional service offerings

**Demo**



# Closing

- Deliver a “land records GIS” that enables success
  - Easier to deploy and sustain
- Evolve and grow the collection of apps
- Develop a community of users
- Provide a platform for partners to deploy their solutions

# UC Events

- ArcGIS for Local Government Sessions
  - Seven different tech workshops
  - Several focused demo theatres
- Parcel Editing Solution Sessions
  - Editing and Maintaining Parcels with ArcMap
  - Advanced Parcel Editing in ArcMap
- Land Records Special Interest Group
  - Thursday Lunch
- Solution Island
  - Focused conversations / support

# Thank you...



<http://solutions.arcgis.com>



<http://meetup.com/ArcGIS-for-Local-Government/>  
<http://meetup.com/ArcGIS-for-State-Government/>



@ArcGISLocalGov  
@ArcGISStateGov

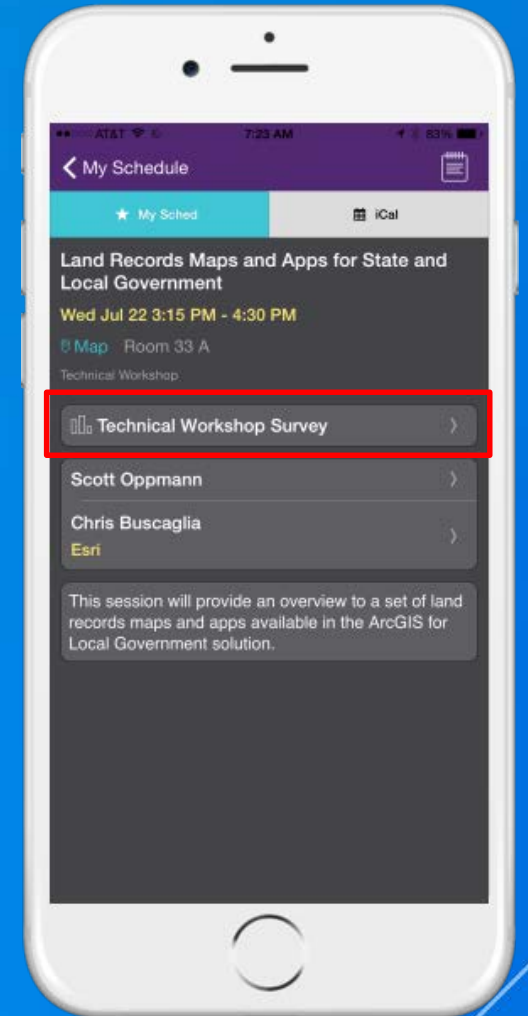


<http://esri.github.com>

Please fill out the session survey:

Mobile – Esri Events UC mobile app

Paper – Pick up and place in drop box







Understanding our world.