



Esri Enterprise Advantage Program (EEAP) Defining and Driving Platform Vision

Patrick Mahoney, USDOJ BLM

Christie Pleiss, Esri

Mark Williams, Esri



Software

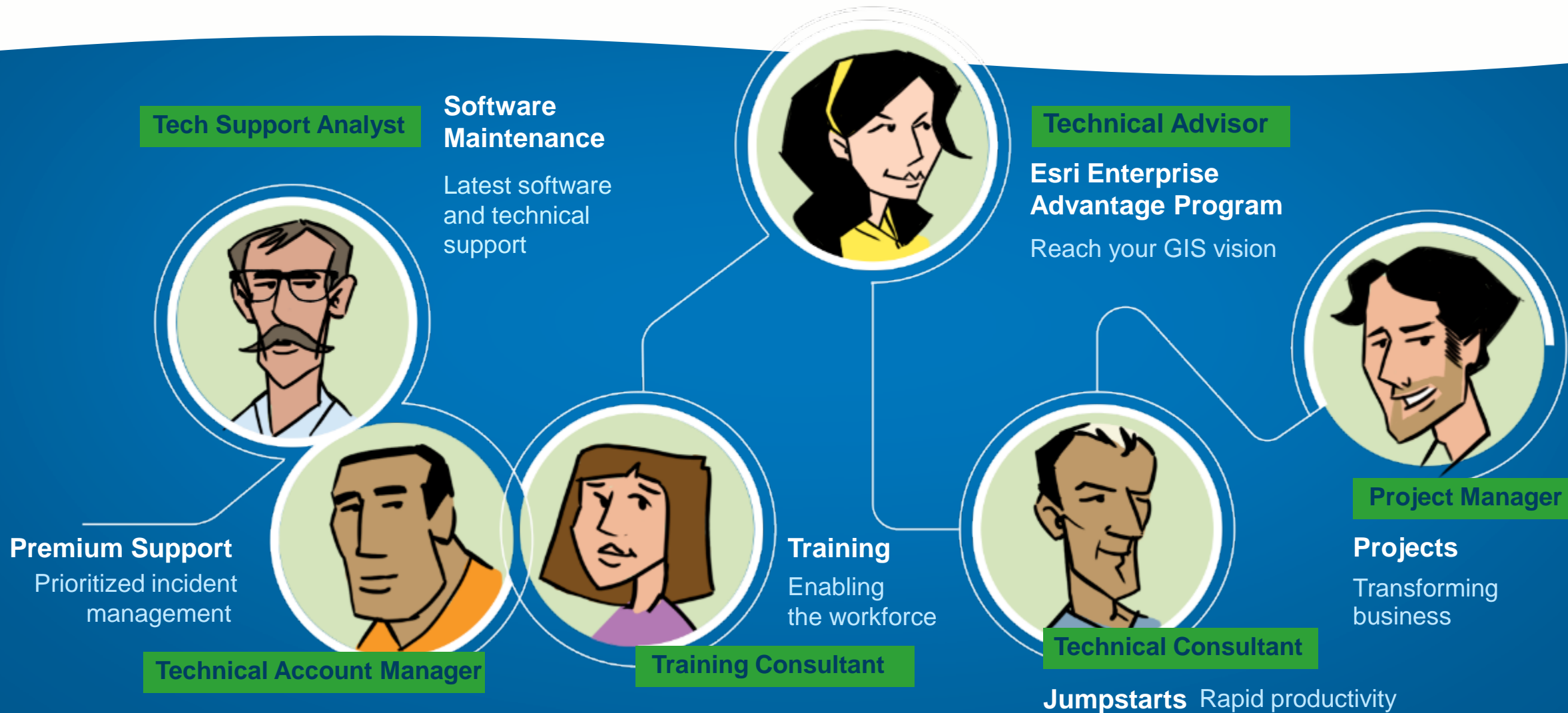


Content



People

Esri Services Ready to help you successfully leverage the ArcGIS Platform for your organization



Esri Enterprise Advantage Program



Planning

Work Plan

Focused Activities

Technology Webcasts

Technical Advisor



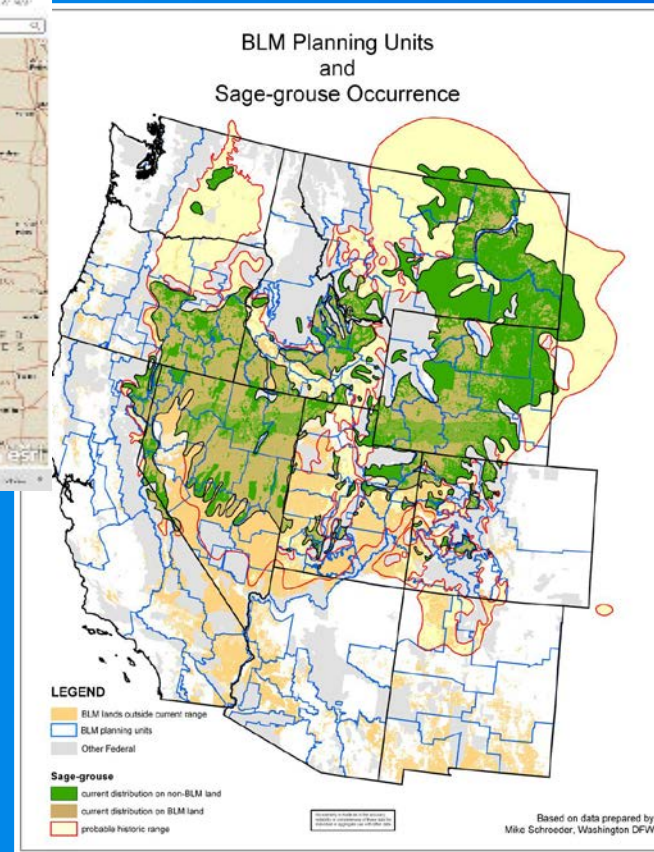
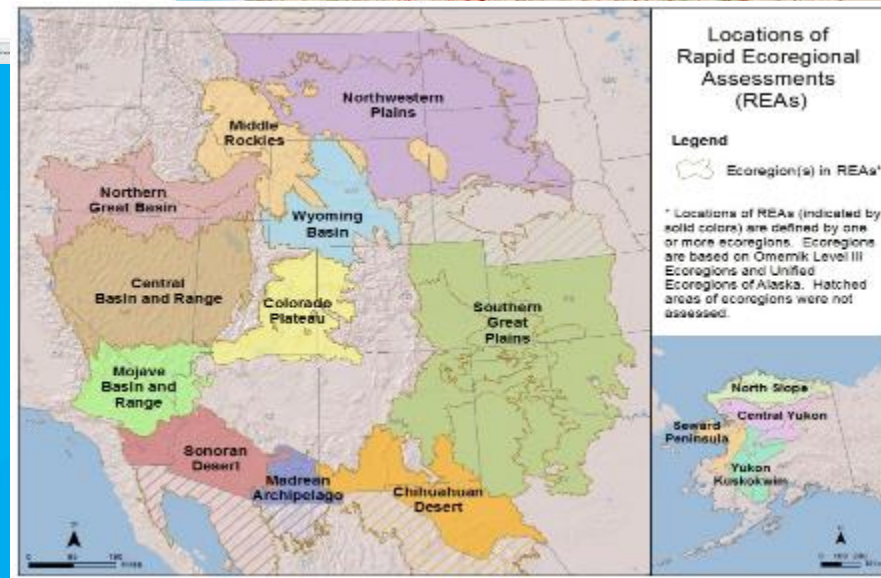
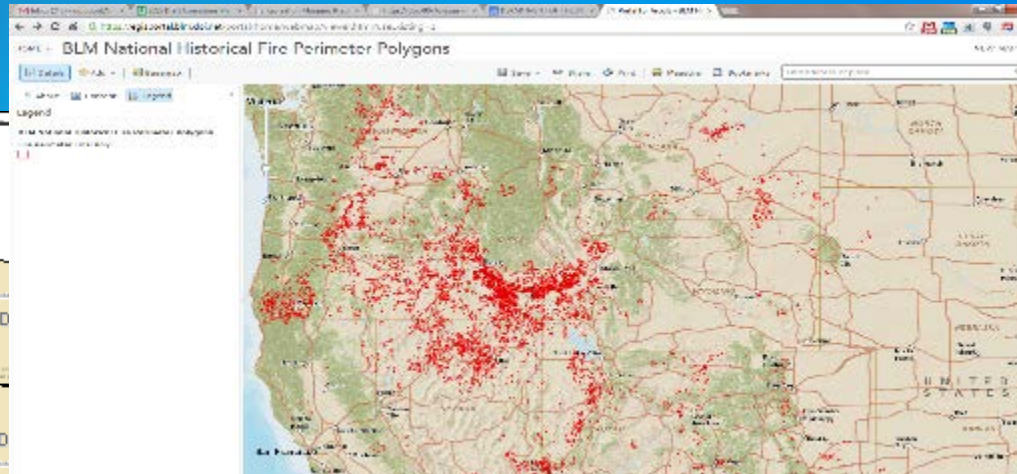
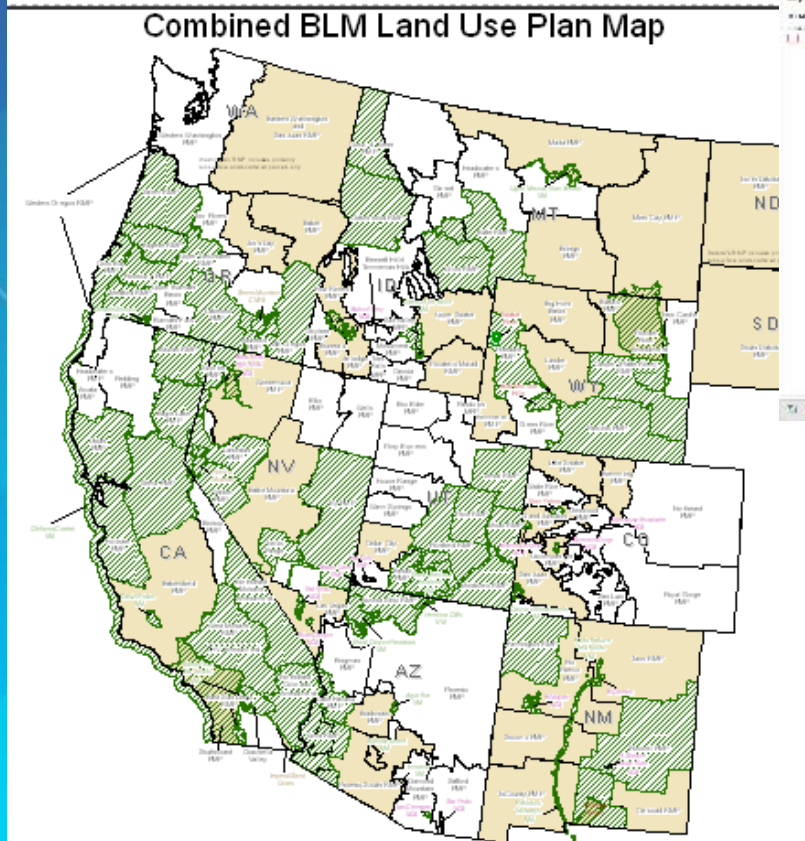
Bureau of Land Management

Organization Background



Managing this Land Requires Maps

Landscape Management Requires New Tools and Approaches

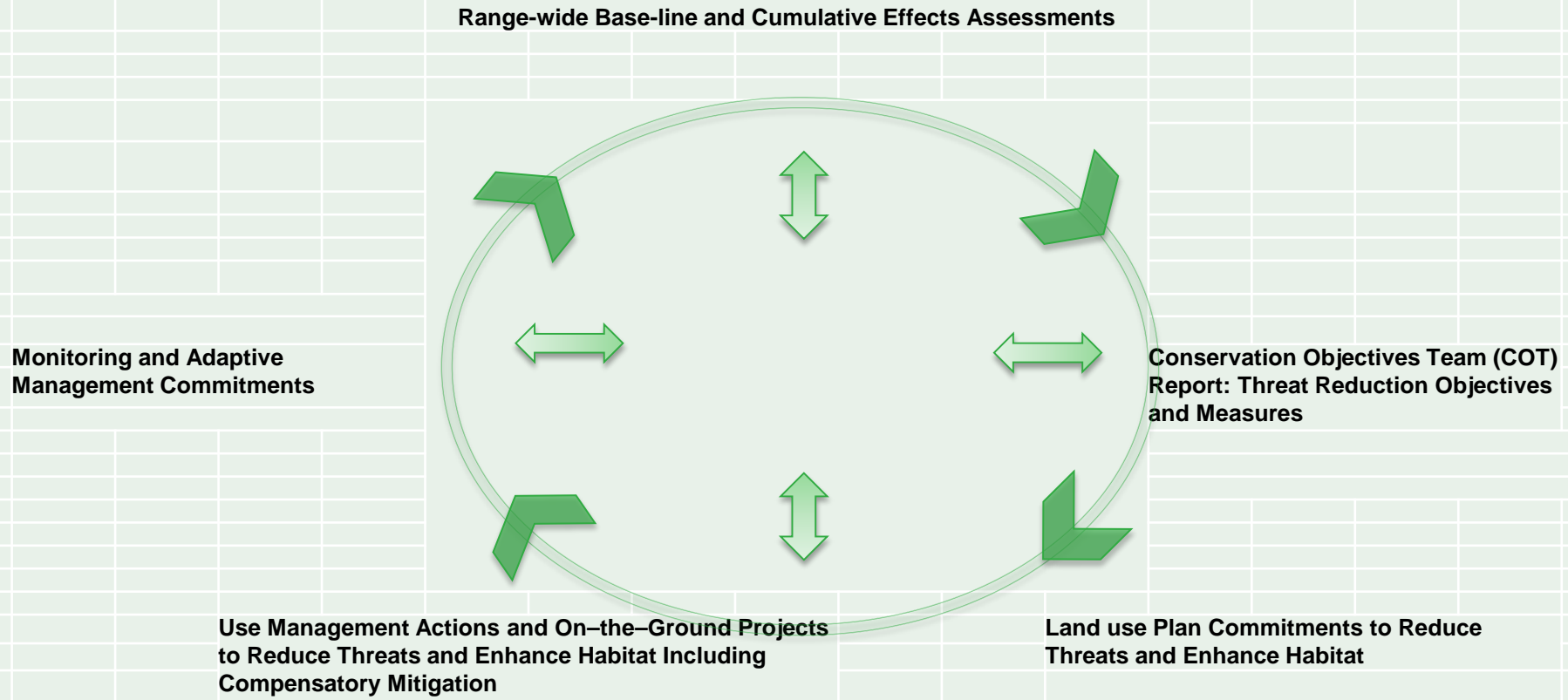


Based on data prepared by Mike Schroeder, Washington DFW

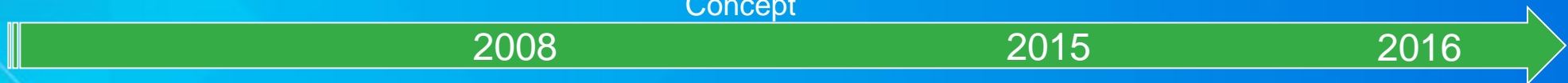
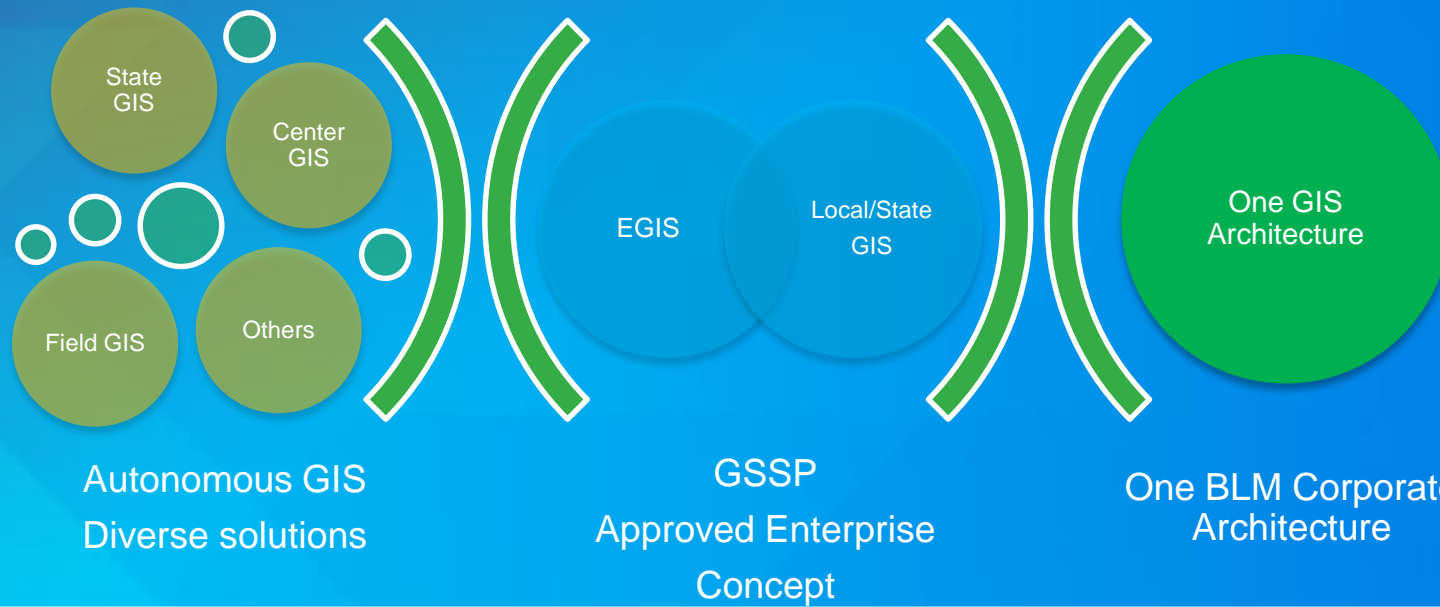
Landscape Approach

Greater Sage Grouse

Sep-14



The Changing State of GIS in the Bureau



Desktops



Desktops
Client-Server



Web Services

Challenges

How to Enable an Organization in a Strong Controlling Culture?

- **Moving away from traditional approach to meeting business needs with IT investments (documentation, design, budget, staffing, etc.)**
- **Adapting to rapidly evolving technology**
- **Improving field data collection workflows**
- **Conveying data management responsibilities within the organization**

Vision and Direction

EEAP Alignment



ESRI ENTERPRISE ADVANTAGE PROGRAM (EEAP)
TECHNICAL WORK PLAN
BUREAU OF LAND MANAGEMENT



Esri Enterprise Advantage Program (EEAP)

Technical Work Plan

Prepared by: Mark Williams
Date Prepared: 04/16/2013
Last Modified: 01/08/2015
Customer Review Date: 12/17/2013

Item	Description
Customer	USDOI Bureau of Land Management (BLM)
Customer #	122980
Contract #	12EAP7098
Program #	C. 15270
Prepaid Training #	40012520
Period of Performance	9/25/2012 – 9/24/2015
Esri Account Manager	Larry Batten, Broomfield, CO
Esri Technical Advisor(s)	Primary: Mark Williams, Olympia, WA Secondary: Paul Burgess, Redlands, CA
Customer Business Contact	Duane Dippon, Senior Geospatial Program Manager Phone: 202-912-7285 Email: ddippon@blm.gov
Customer Technical Contact	Kathie Jewell, IRM Advisor Phone: (202) 912-7418 Email: kjewell@blm.gov

Background:

The BLM is responsible for managing BLM Public lands located and managed by 12 States organizations of Field Offices and personnel. The BLM's multiple-use mission, set forth in the Federal Land Policy and Management Act of 1976, mandates that they manage public land resources for a variety of uses, such as energy development, livestock grazing, recreation, and timber harvesting, while protecting a wide array of natural, cultural, and historical resources, many of which are found in the BLM's National Landscape Conservation System.

Geospatial information is critical for management public lands, and is used by managers, resource specialists, analysts and policymakers for understanding natural resource relationships, environmental interactions, social and economic impacts, and environmental performance. The use of geospatial data and technologies has grown to include nearly half of the Bureau's employees using them in over 80% of their work flows.

In 2008, the BLM developed a Geospatial Services Strategic Plan (GSSP) which provided guidance on a spatially enabled Bureau supporting accurate and effective decisions. The GSSP 6 main goals:

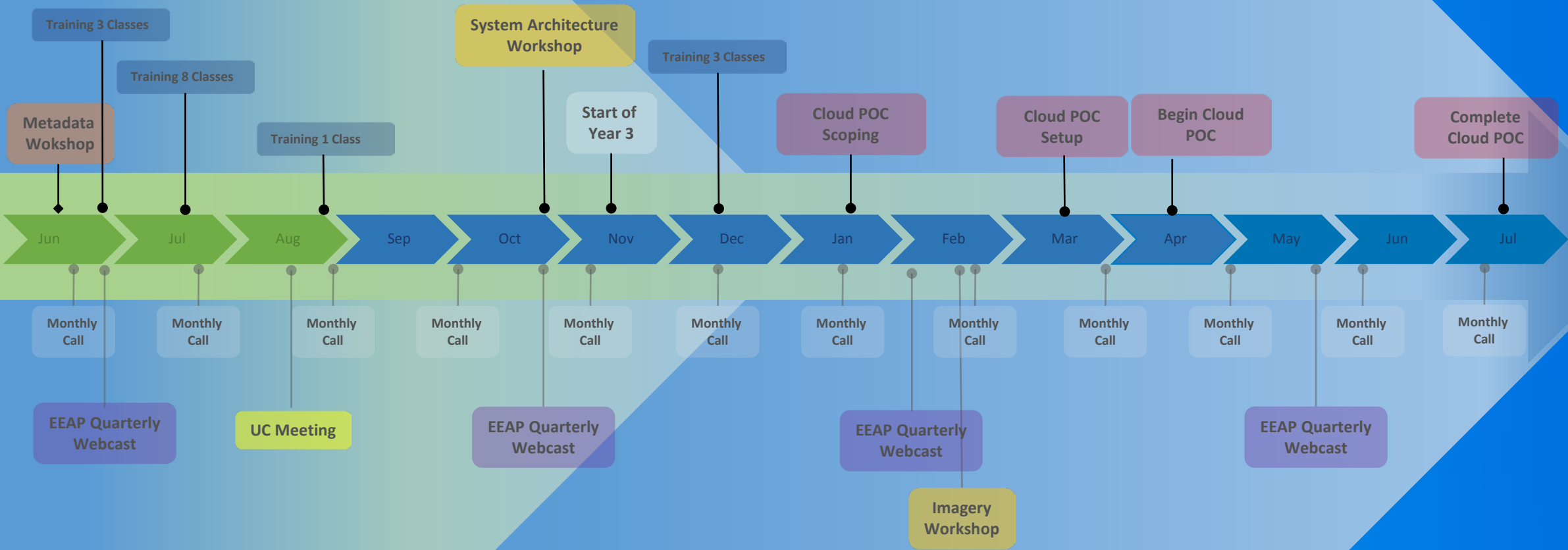
- Governance
- Business Process
- Data Architecture
- Application Architecture
- Technology Architecture



EEAP Activity Timeline

2014

2015



BLM EEAP Activities

Consulting & Subject Matter Expertise

- **Detailed Software Demonstrations**
 - Portal
 - Collector
 - Story Maps
 - GeoPortal
 - AGOL Landscape Decision
 - AGOL SocioEconomics
 - Web (ArcServer) Services
- **Technical Advisor Support**
 - Treatment Application
 - Attribute Updates via Web Services
 - Web Streaming Services

- **System Assessments**
 - Citrix Configurations
 - Database Configurations
 - Imagery Delivery Configurations



BLM EEAP Activities

Training

Instructor Lead

- Intro to GIS
- Essential Workflows
- Performing Analysis
- Sharing Content on the Web
- Building Geodatabases
- Designing Maps w/ArcGIS
- Distributing Data Using Geodatabase Replication
- Editing Data w/ArcGIS Desktop
- Implementing Versioned Workflows in a Multiuser Geodatabase
- Introduction to Geoprocessing Scripts Using Python
- Managing Imagery using ArcGIS
- ArcGIS for Server: Sharing GIS Content on the Web

Virtual Campus

- 1000 classes/year

Conferences

- International, Federal GIS, Developer Summit, Regional

253 Class Seats



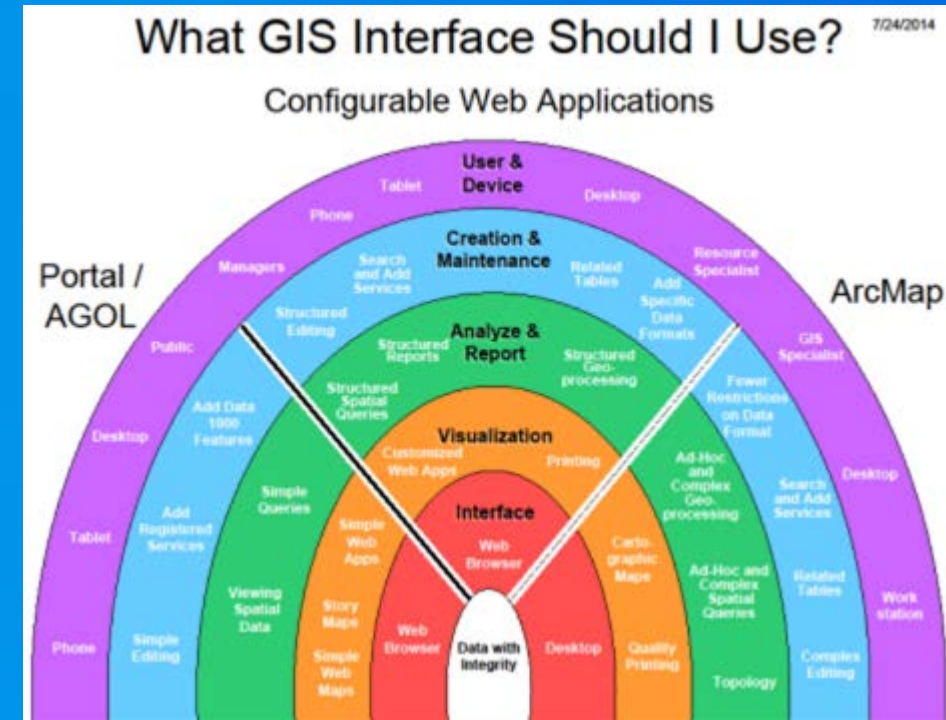
58 Days of Instruction

4960 Classroom Hours

Successes

Through Effective Use of EEAP Resources

- Sponsored a DOI Portal Instructor-led Training Session
- In 2014 trained over 100 people in 12 different classes
- Implemented Portal for ArcGIS
- Improved data management at the NOC
- Improved infrastructure in Citrix Farms
- Story Maps (REAs, and NLCS)
- Utilizing the COTS software to be effective
- New GIS Users (1875 Portal Users)



ArcGIS Online for Organizations

What?

- Same as Portal except:
 - Cloud-hosted
 - Can share w/ PUBLIC!
 - Restricted BLM access only

Why?

- See data & maps!
 - BLM National, State, Project
- Create a map w/o ArcGIS
 - Upload data from your computer/network
- Share existing map services (BLM or external)
- Create a StoryMap
- Share with , all BLM, Group
 - Or keep private



How?

- Go to AGOL for BLM
- Request login from Patrick Mahoney (pmmahone@blm.gov)

ePlanning – find NEPA documents - https://eplanning.blm.gov/epl-front-office/eplanning/lup/lup_register.do



Welcome

Welcome to the Bureau of Land Management's (BLM) national register for Land Use Planning (LUP) and National Environmental Policy Act (NEPA) documents. The register allows you to review and comment online on BLM NEPA and planning projects. This site also makes finding documents easier by allowing you to search for projects by geographic location, project resource type, year, and other project-specific fields.

If you have questions about the BLM NEPA or Planning process, please use the links at the top of the page to find more information about your topic of choice.

All BLM states will be using the ePlanning NEPA Register and LUP Register by the end of 2017 per BLM policy. If a NEPA or LUP project cannot be located through this page, please visit the corresponding BLM Field Office website to obtain project location and information.

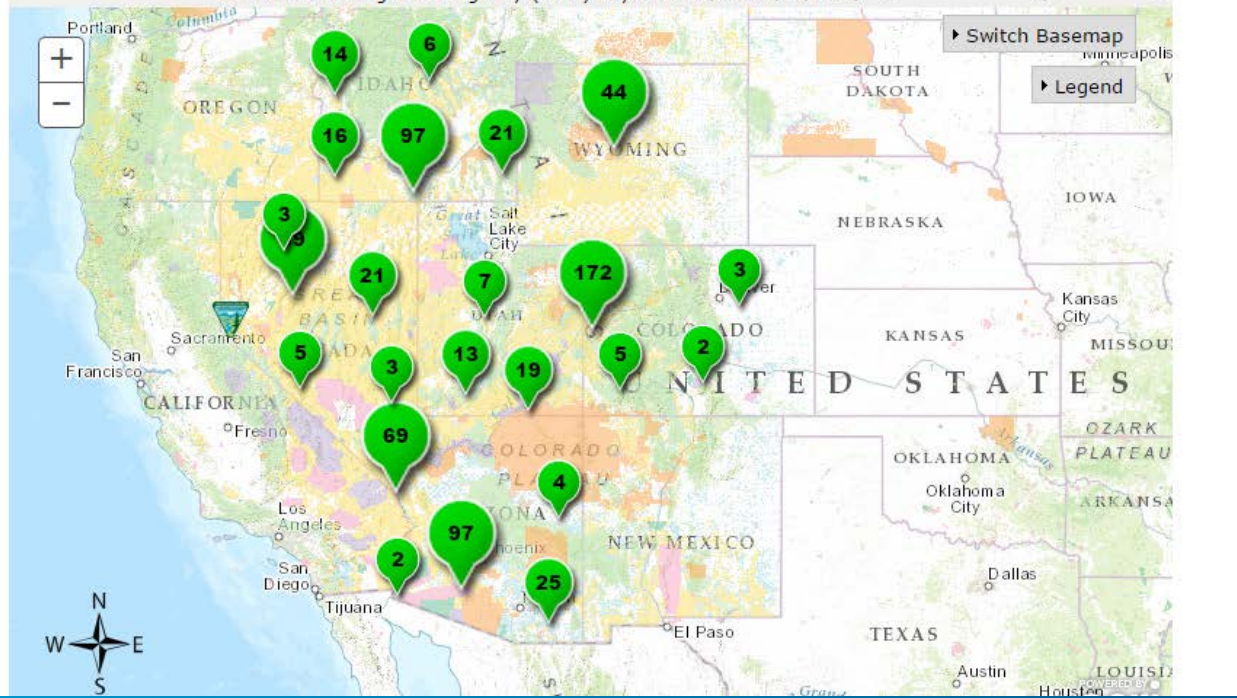
ePlanning Project Search

Type of project: Land Use Plan NEPA

Map Search | Text Search

Selected Project Points: Active All

Surface Management Agency (SMA) Layer Transparency: (40%)



Apps within ArcGIS Online / Portal for ArcGIS

What?

- Web map application
 - Interactive map
 - Audio, images, text, video, links, etc.
- Publish through:
 - AGOL for BLM (public!)
 - BLM EGIS Portal (internal)

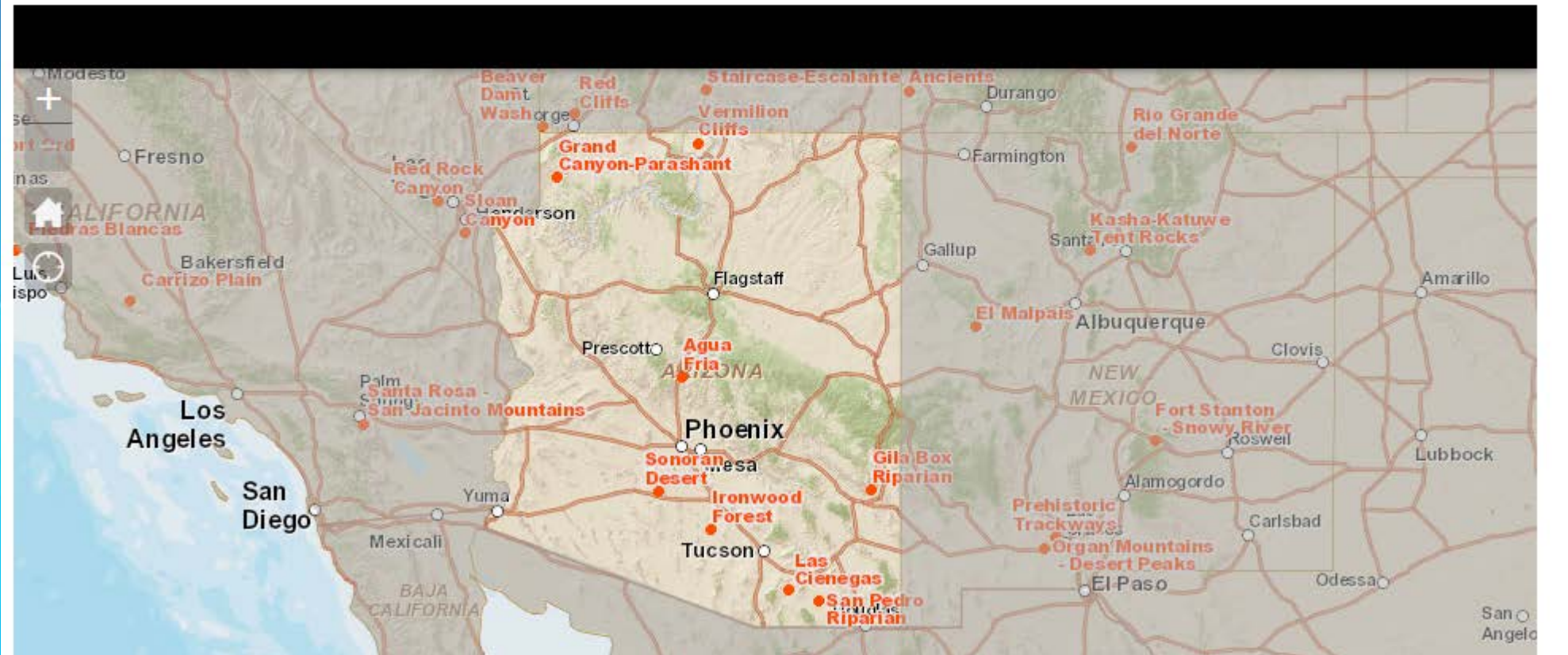
Why?

- Tell a story in a geographic context
 - Allow users to interact, read, listen, watch...

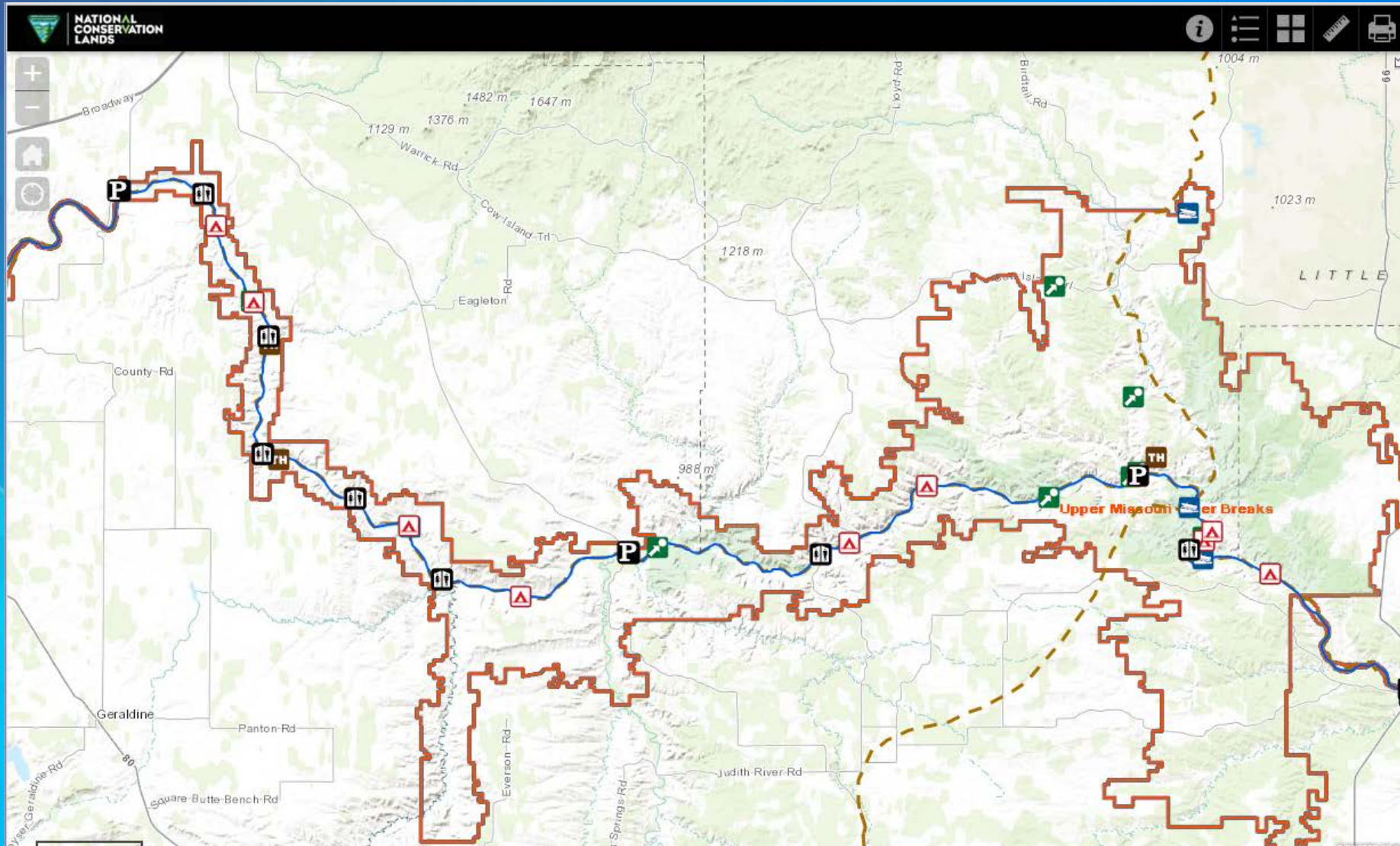
How?

- AGOL for BLM or EGIS Portal
- To create a Story Map, contact Duane Dippon (ddippon@blm.gov)





ArcGIS Online - External



Reporting Illegal Dump Sites on Public Lands

Reporting on illegal dump site incidents showcase real issues encountered by land management agencies, and how GIS data assists in the decision-making process. Events such as these create work and consume resources across departments and jurisdictional partnerships such as the Department of Sustainability, Hazmat, partnering with Law Enforcement and Public Affairs.



Paint a Picture

A point is plotted on a map. Then a picture is taken and attached to the record.



- 1 Range
- 3 Ownership
- 4 National Level Interest
- 5 Kiger Gorge
- 6 Activities
- 7 Dump Sites
- 8 Pin-point
- 9 Paint a Picture
- 10 More Sites...
- 11 Costly Damage

Portal for ArcGIS

What?

- Internally-hosted software for creating & sharing web maps & apps
- DOI only



Why?

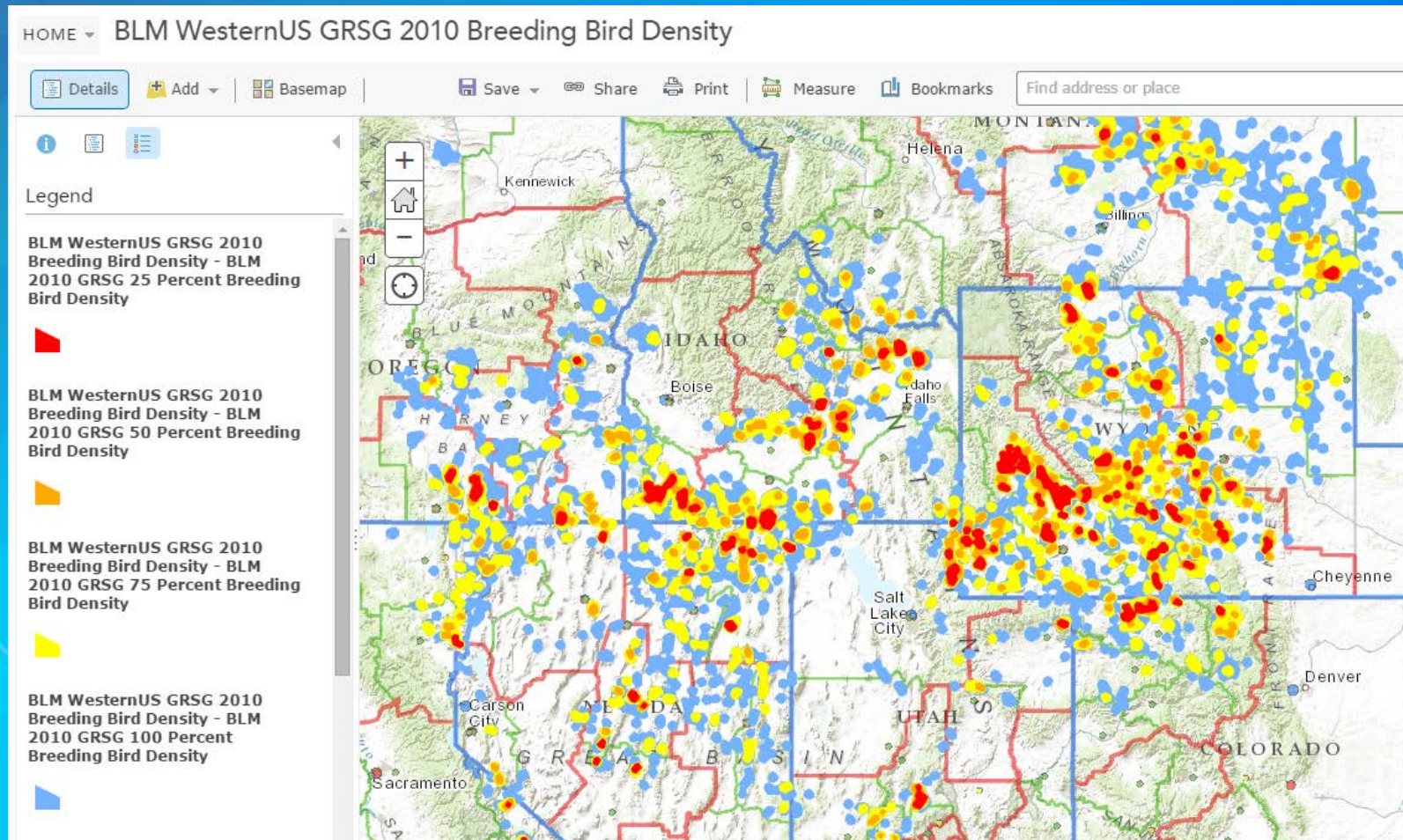
- See data & maps!
 - BLM National, State, Project
- Create a map w/o ArcGIS
 - Upload data from national projects
- Share existing map services (BLM or external)
- Create a StoryMap
- Share with all DOI, all BLM, Group
 - Or keep private

How?

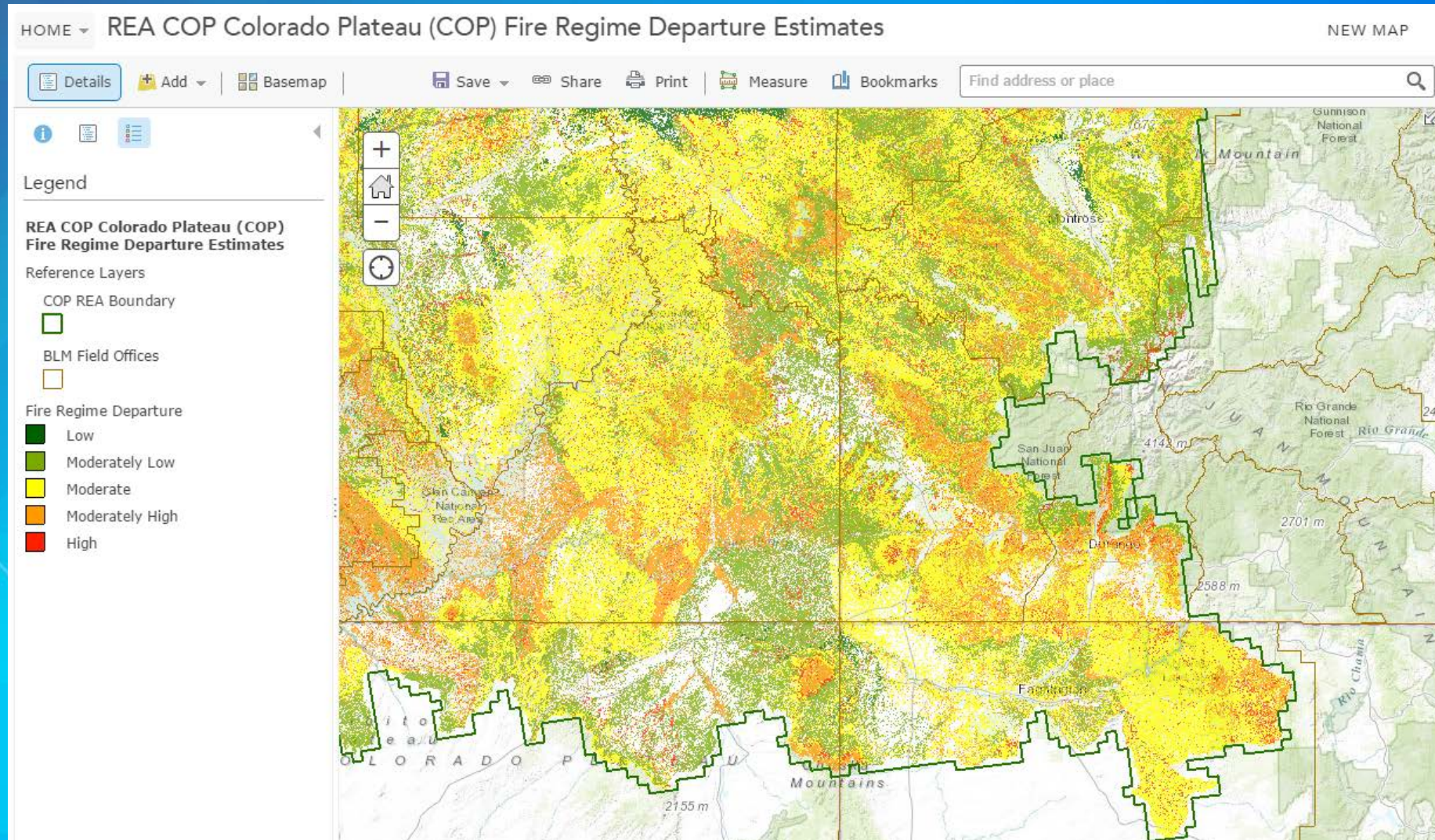
- Go to BLM EGIS Portal (no login)
- User's Manual on Geospatial Gateway

Portal for ArcGIS

Where industry is going, is where we need to go!



Portal for ArcGIS



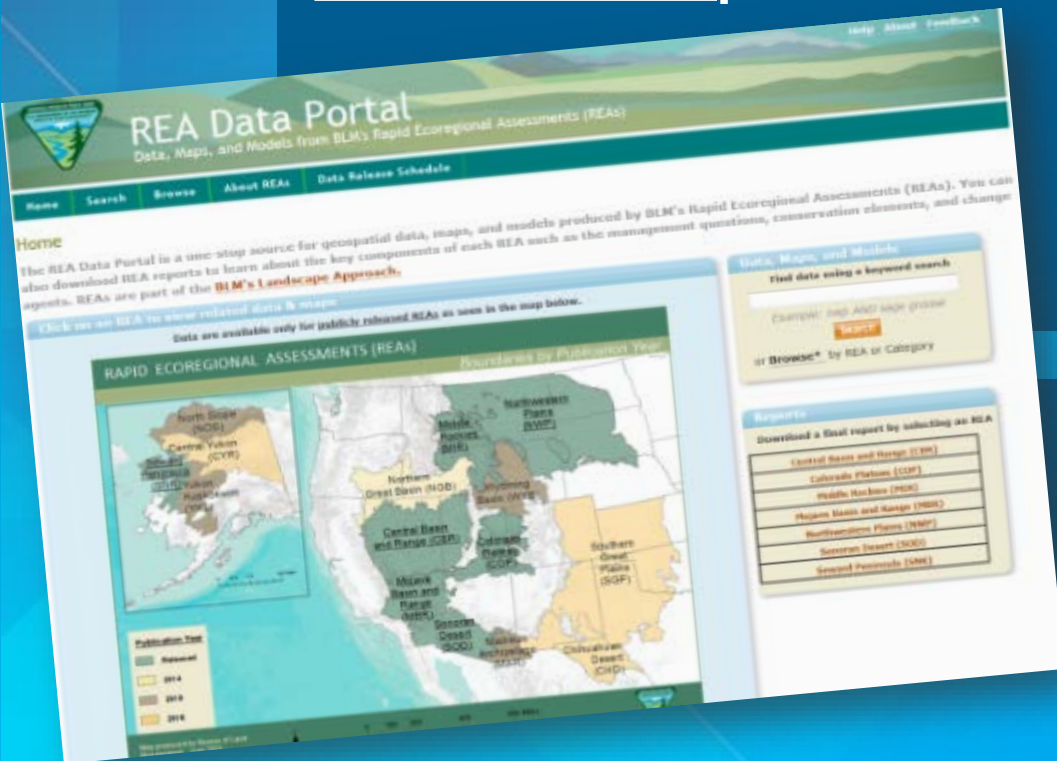
Geoportal Server

What?

- Public web-based catalog
 - Data, maps, models, reports, etc.
- BLM & external products

Why?

- Search for geospatial products across programs & agencies
 - BLM (REAs)
 - USGS, USFWS, LCC's
 - ArcGIS.com
 - *BLM (AIM, GRSG, REA Step-Down ...coming in late 2015/early 2016)*



How?

- Go to Geoportal Server (no login)
- Contact Megan Walz (mwalz@blm.gov)

Portal for ArcGIS

<http://www.landscape.blm.gov/geoportal/catalog/main/portal.page>

NATIONAL SYSTEM OF PUBLIC LANDS
U.S. DEPARTMENT OF THE INTERIOR
BUREAU OF LAND MANAGEMENT

REA Data Portal

Data, Maps, and Models from BLM's Rapid Ecoregional Assessments (REAs)

[Help](#) [About](#) [Feedback](#)

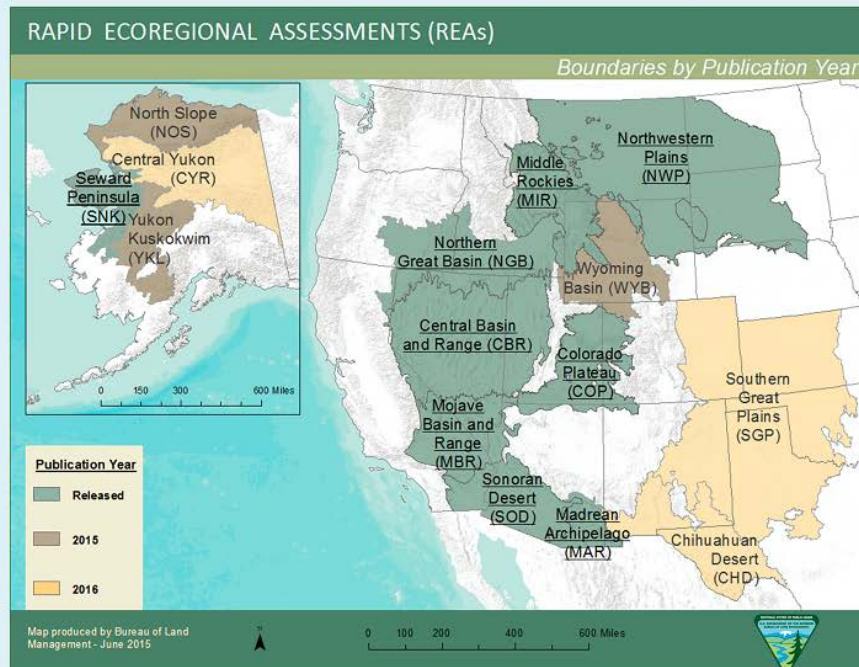
[Home](#) [Search](#) [Browse](#) [About REAs](#) [Data Release Schedule](#) [How To...](#)

Home

The REA Data Portal is a one-stop source for geospatial data, maps, and models produced by BLM's Rapid Ecoregional Assessments (REAs). You can also download REA reports to learn about the key components of each REA such as the management questions, conservation elements, and change agents. REAs are part of the **BLM's Landscape Approach**.

Click on an REA to view related data & maps

Data are available only for publicly released REAs as seen in the map below.



Data, Maps, and Models

Find data using a keyword search

Example: nwp AND sage grouse

or **Browse*** by REA or Category

Reports

Download a final report by selecting an REA

Central Basin and Range (CBR)
Colorado Plateau (COP)
Middle Rockies (MIR)
Mojave Basin and Range (MBR)
Northwestern Plains (NWP)
Sonoran Desert (SOD)
Seward Peninsula (SNK)
Northern Great Basin (NGB)
Madrean Archipelago (MAR)

Project – specific external web services

The screenshot displays the 'Military Legacy Sites Data Viewer' web application. The interface is organized into several sections:

- Navigation and Tools:** A top menu bar includes 'Basic Tasks', 'Getting Around', 'Maps & Data Sources', and 'Analysis'. Below this, a toolbar contains icons for 'Agency Filter', 'Clear Filter', 'Select Installation', 'Filter MLS Table', 'Clear MLS Results', 'FUDS Installation Data Report', 'FUDS Site Data Report', 'MLS Site Tracking Data Report', 'Munitions Response Site Data Report', 'FY15 Work Plan Report', 'Print Map', and 'Export Map'.
- Map Layers Panel:** Located on the left, it lists various layers with checkboxes and sliders:
 - Operational Layers:**
 - DOI Military Legacy Sites
 - DOI_CO_FUDS_National_Guard
 - BIA Regional Boundaries
 - BLM Administrative Units
 - BLM Administrative Unit Office Points
 - BLM Administrative Unit State Boundary
 - BLM Administrative Unit District Boundary
 - BLM Administrative Unit Field Boundary
 - BLM Administrative Unit Other Boundary
 - BOR Administrative Boundaries
 - NPS Regional Boundaries
 - SMA Withdrawals
 - Base Maps:**
 - Street Map
 - BLM National Base Map
 - Imagery
- Main Map Area:** Displays a map of the Colorado-San Diego border region. A search bar at the top left of the map contains the text 'I want to...'. The map shows various colored overlays representing military legacy sites and administrative boundaries. Major roads like I-15, I-10, and I-40 are visible. Labels for 'ARIZONA' and 'MEXICO' are present. A scale bar at the bottom left indicates 25 miles and 50 kilometers. A 'Street Map' dropdown menu is located in the top right corner of the map area.
- Footer:** At the bottom left, there are 'Home' and 'Map Layers' buttons. At the bottom right, a small text credit reads 'U.S. Army Corps of Engineers/Department of Interior | Source'.

What's Next

Activities: 2015 and Beyond

- **Just starting 4 cloud based proof of concepts utilizing Esri Managed Services**
 - Redefining how data is stored, accessed, and managed
 - Learning how to operate in a cloud environment to enable development of requirements
- **Imagery management workshop for National Operations Center**
- **Mobile data collection (Collector, AppStudio)**
- **Defining roles, and training plan for the future “One GIS”**
- **Lots more training...**
- **Lots more enabling...**



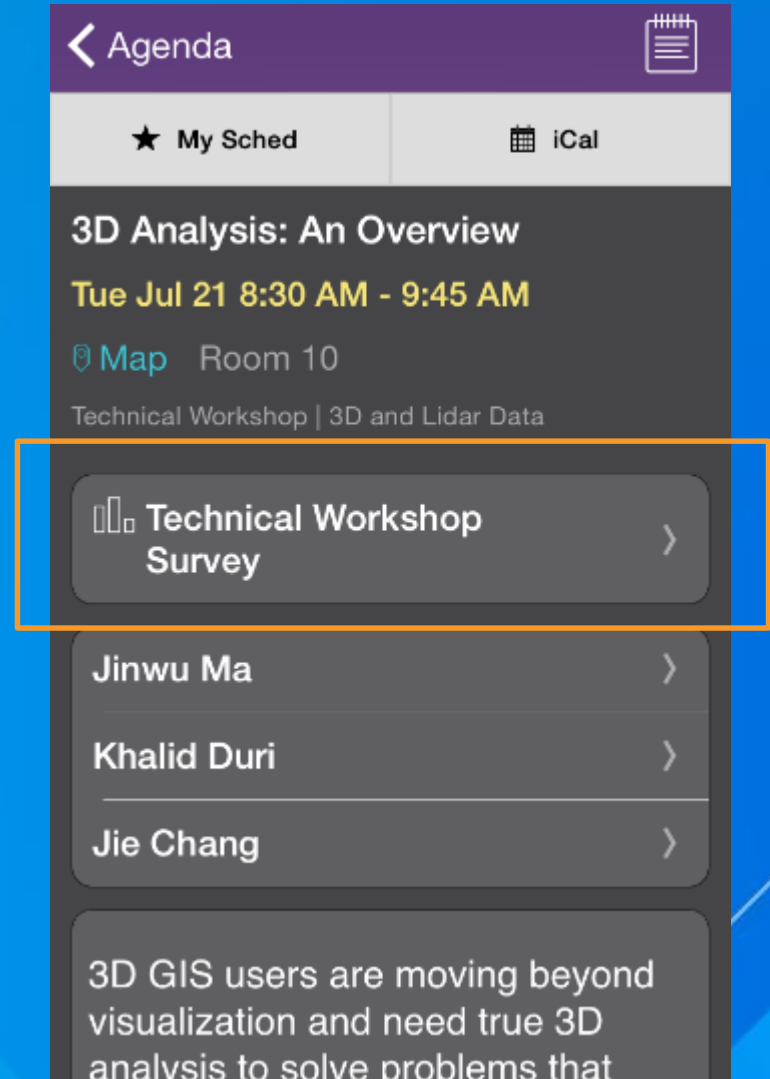
Maximize your investment with Esri

- Reach your enterprise GIS **vision**
- **Collaborate** with Esri experts
- Proactive **advice** and advocacy
- **Enable** your organization

Questions?

Thank you...

- Please fill out the session survey in your mobile app
- Select [enter session title here] in the Mobile App
 - Use the Search Feature to quickly find this title
- Click “Technical Workshop Survey”
- Answer a few short questions and enter any comments



Thank You!



Understanding our world.