



ArcGIS Pro: An Introduction

Robert LeClair, David Reeves, David Watkins

ArcGIS for Desktop



ArcMap



ArcGIS Pro

ArcGIS for Desktop



ArcMap



ArcGIS Pro



Desktop

Web

Device



Apps

Portal



Access



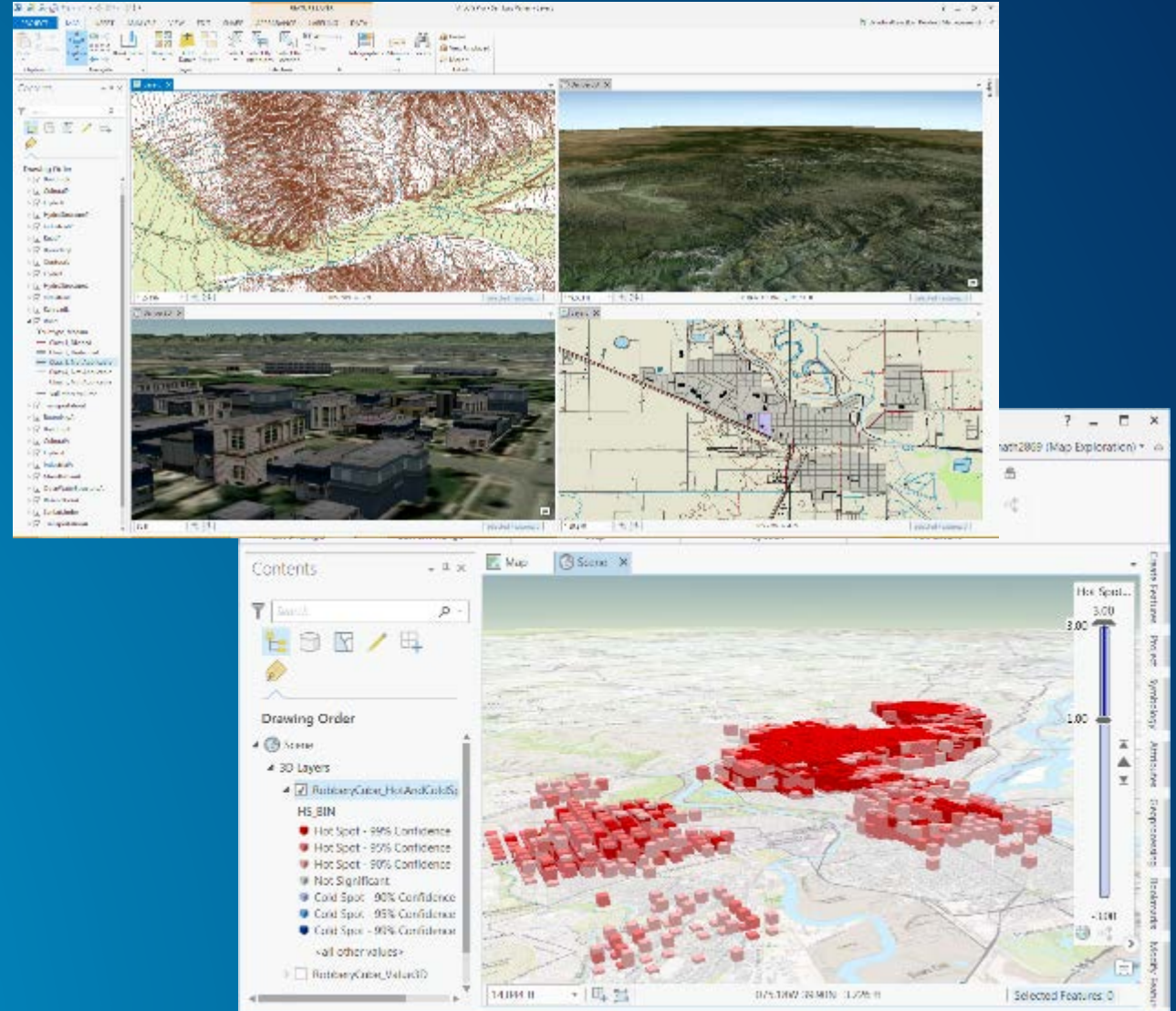
Server



Online Content
and Services

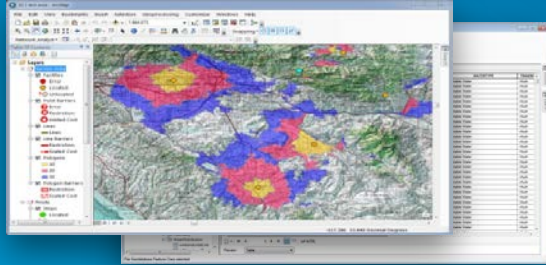
Services

- 64 Bit, multi-threaded
- Simplified user interface
- Integrated with ArcGIS Online
- Combined 2D/3D experience
- Multiple maps and map layouts
- Simple search and query

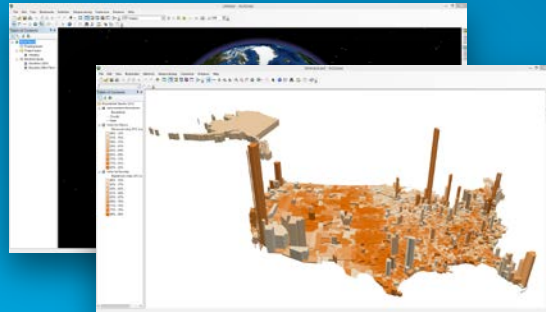


Fusion of Applications

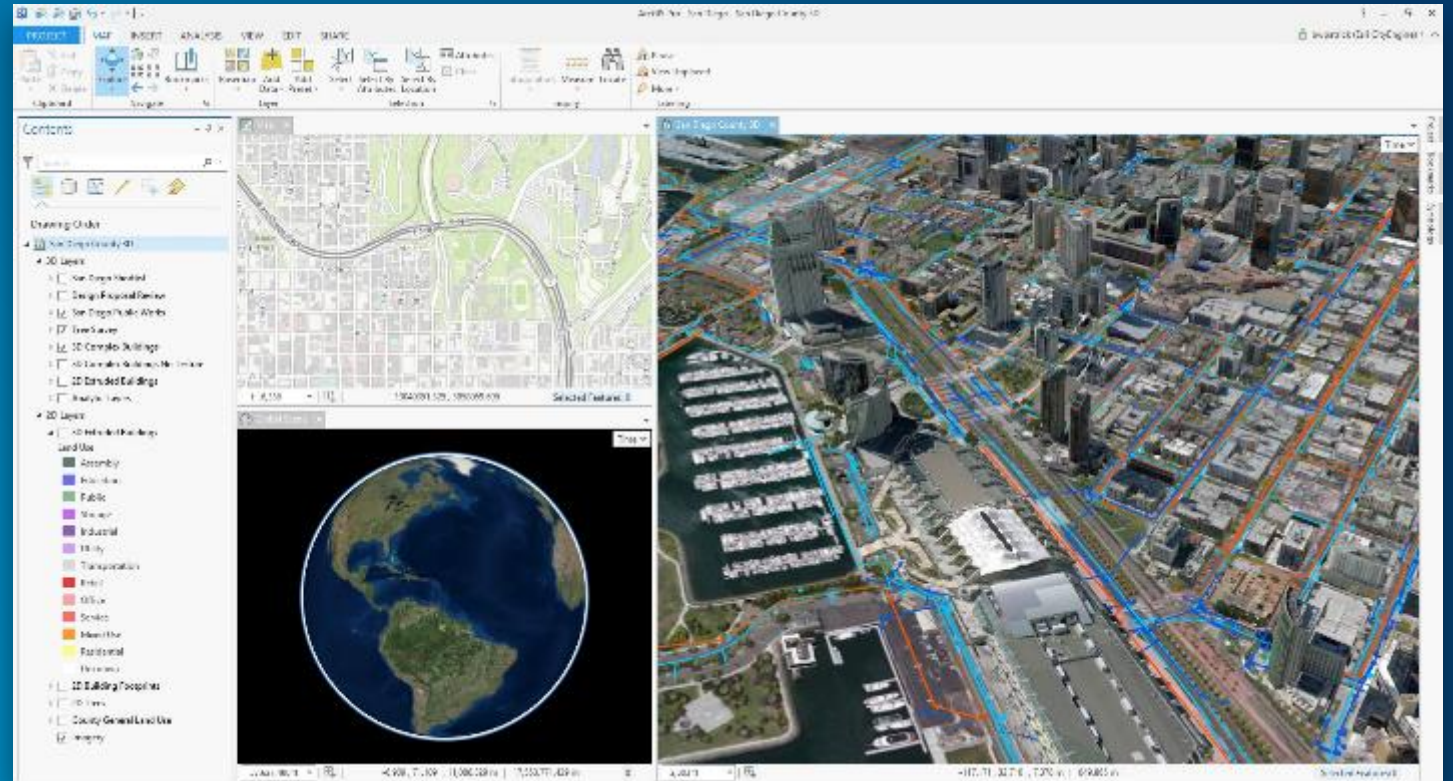
ArcMap / ArcCatalog

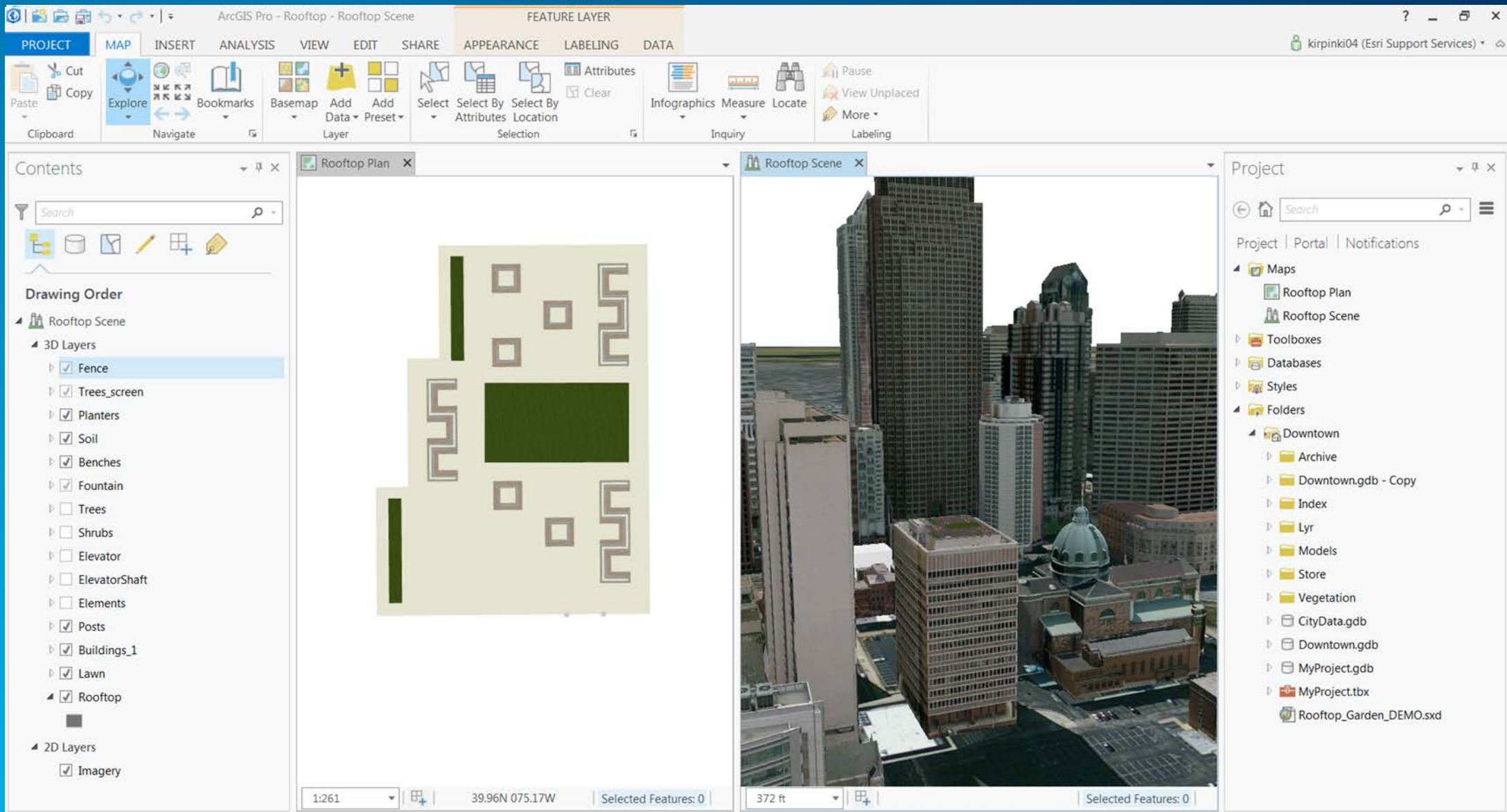


ArcGlobe / ArcScene



CityEngine







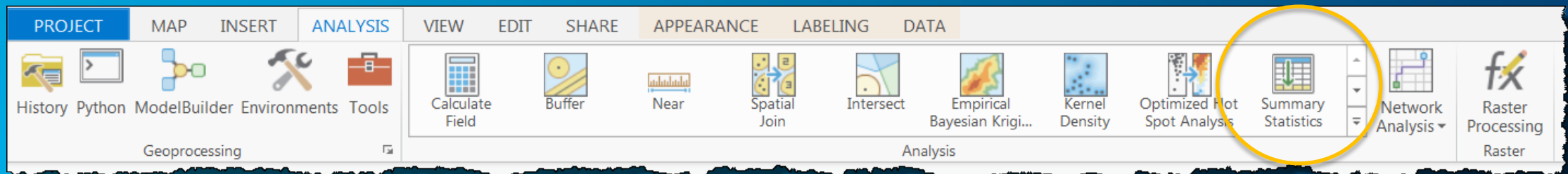
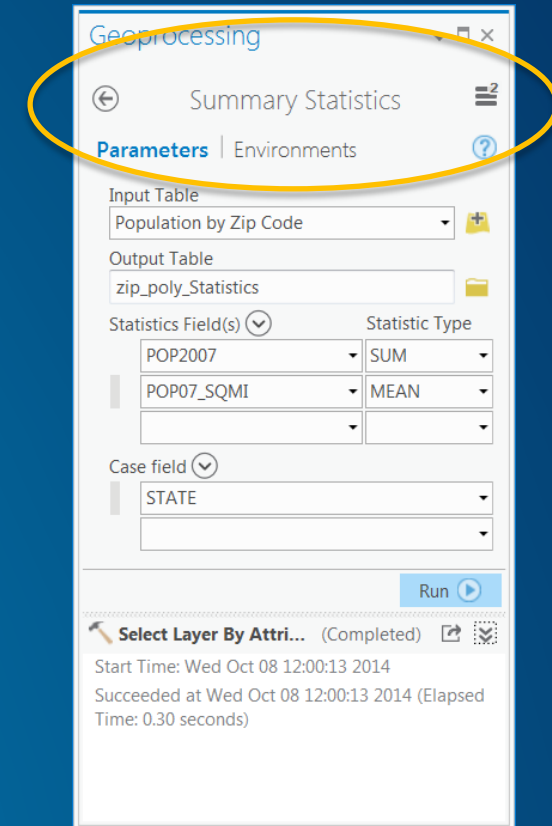
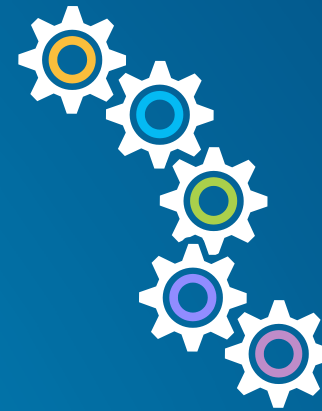
Demo

Overview of ArcGIS Pro

Analysis in ArcGIS Pro

Power of GIS

- 723 Tools (ArcMap 928)
- Geoprocessing Pane
- Modelbuilder
- Python Window
- Network Analysis
- Image Processing



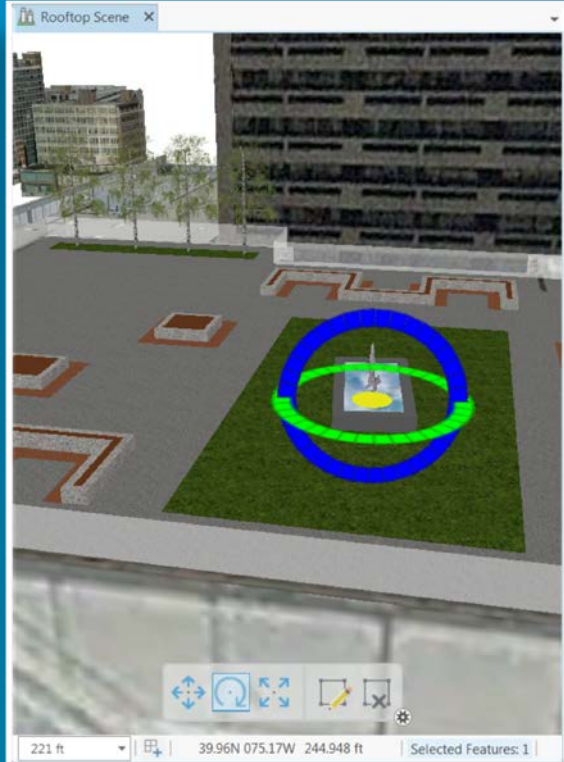
Demo

Analysis in ArcGIS Pro

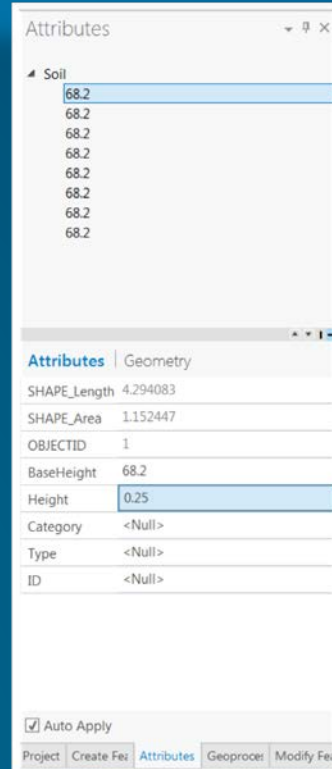


Edit & Share

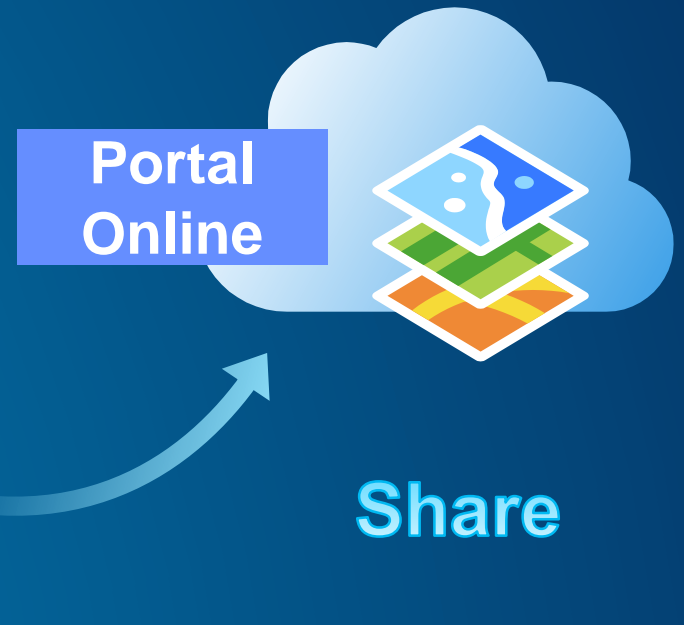
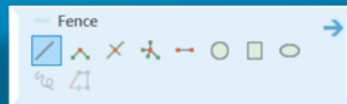
- 2D and 3D Editing
- Simplified Edit Sessions



Update



Create & Maintain



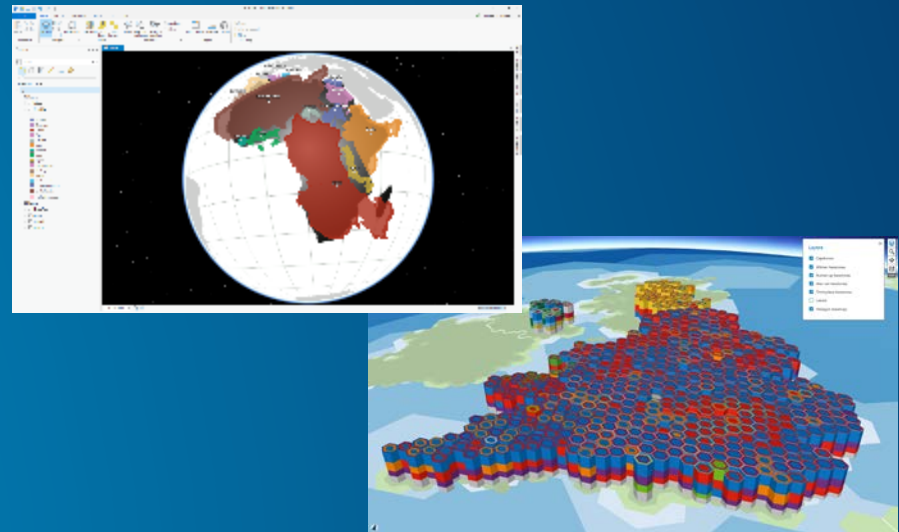
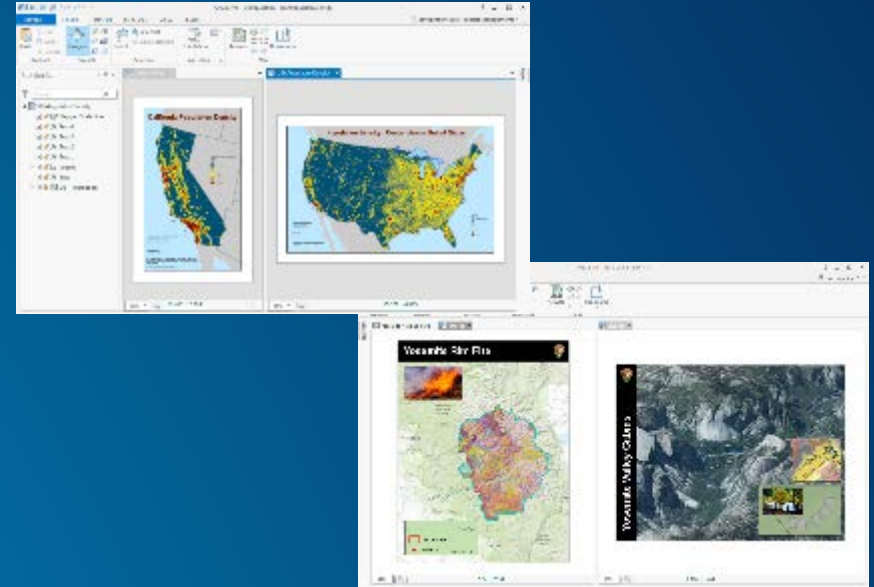


Demo

Editing in ArcGIS Pro

Mapping & Visualization

- Improved drawing performance and quality
- Multiple layouts
- Unified symbol model
- Transparency
- 3D Cartography
- Improved export



Demo

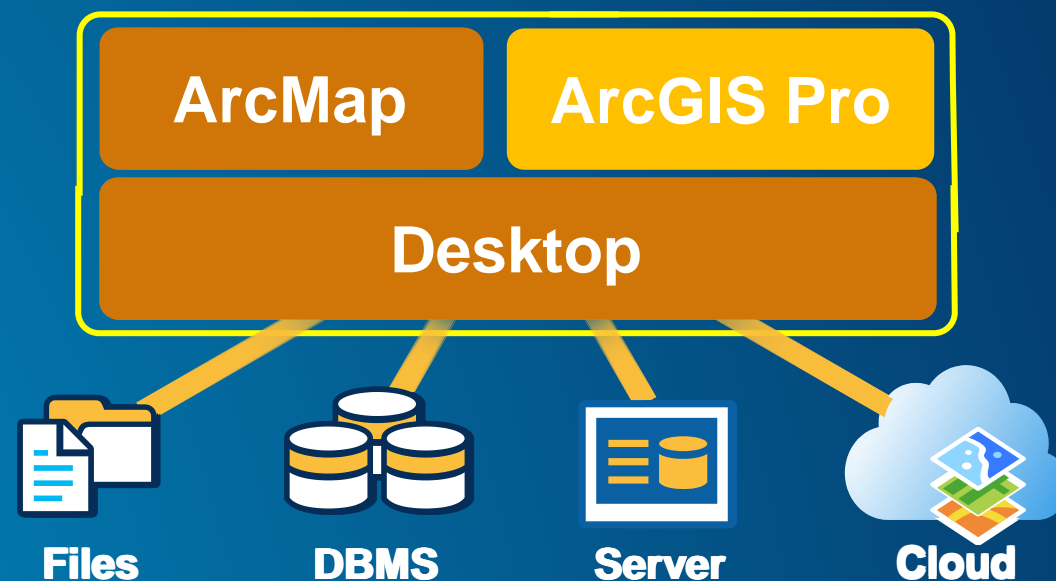
Mapping in ArcGIS Pro



Common Questions

Desktop

- ArcMap continues
- ArcGIS Pro is a new part of Desktop
- ArcMap and ArcGIS Pro run side by side
 - Separate install
 - Imports MXDs, SXDs, and 3DDs
 - Models and Scripts (Python)
- Basic, Standard, and Advanced Levels



How is access to ArcGIS Pro managed?

Online Organization or Portal

Organization Admin can:

- Grant access by Named User
- Control product level and extension
- Re-assign access as needed
- Know who's using what and when

ArcGIS Online \ Portal Named User can:

- Sign-in and use Pro anywhere
- Go offline if needed

The screenshot displays the 'Managing ArcGIS Pro Licenses for Esri Product Management' interface. It features a navigation bar with 'HOME', 'GALLERY', 'MAP', 'SCENE', 'GROUPS', 'MY CONTENT', and 'MY ORGANIZATION'. The main content area is titled 'MY ORGANIZATION' and includes a 'HELP' link. A table shows license usage for various products, with 'Licensed Members' and 'Available' counts for each. Below the table is a 'Members' section with a search bar and a list of users with their license details and last used dates.

| Licensed Members | Product | ArcGIS Pro Basic | ArcGIS Pro Standard | ArcGIS Pro Advanced | Spatial Analyst | 3D Analyst | Network Analyst | Geostatistical Analyst | Data Reviewer | Workflow Manager |
|------------------|---------------|------------------|---------------------|---------------------|-----------------|------------|-----------------|------------------------|---------------|------------------|
| Maximum | 150 Licenses | 50 | 50 | 50 | 50 | 50 | 50 | 50 | 50 | 50 |
| Available | 124 Available | 45 | 47 | 32 | 25 | 24 | 31 | 38 | 36 | 38 |

| Name | Username | Licensed for | Last Used ArcGIS Pro |
|---------------|--------------|-----------------------------|---------------------------|
| David Watkins | davidwatkins | Pro Advanced + 6 Extensions | Jan 13, 2015, 4:23:08 PM |
| Bruce Harold | bruce_harold | Pro Advanced + 6 Extensions | Nov 12, 2014, 3:31:53 PM |
| Larry Young | larryy | Pro Advanced + 6 Extensions | Dec 15, 2014, 11:42:14 AM |
| Rob Elkins | rpe2 | Pro Advanced + 6 Extensions | Jan 9, 2015 |

Pro License Admin

Option for concurrent use license at 1.2

What extensions are available with ArcGIS Pro?

- Spatial Analyst
- 3D Analyst
- Network Analyst
- Geostatistical Analyst
- Data Reviewer
- Workflow Manager
- Data InterOp (1.1)
- Streetmap Premium (1.1)

MY ORGANIZATION HE

| Licensed Members | | Product | ArcGIS Pro Basic | ArcGIS Pro Standard | ArcGIS Pro Advanced | Spatial Analyst | 3D Analyst | Network Analyst | Geostatistical Analyst | Data Reviewer | Workflow Manager |
|------------------|-----|-----------|------------------|---------------------|---------------------|-----------------|------------|-----------------|------------------------|---------------|------------------|
| Maximum | 150 | Licenses | 50 | 50 | 50 | 50 | 50 | 50 | 50 | 50 | 50 |
| Available | 124 | Available | 45 | 47 | 32 | 25 | 24 | 31 | 38 | 36 | 38 |

Licensed Products for Rob Elkins (rpe2) Last used ArcGIS Pro: Jan 9, 2015

Esri Applications

[-] ArcGIS Pro

- Basic
- Standard
- Advanced

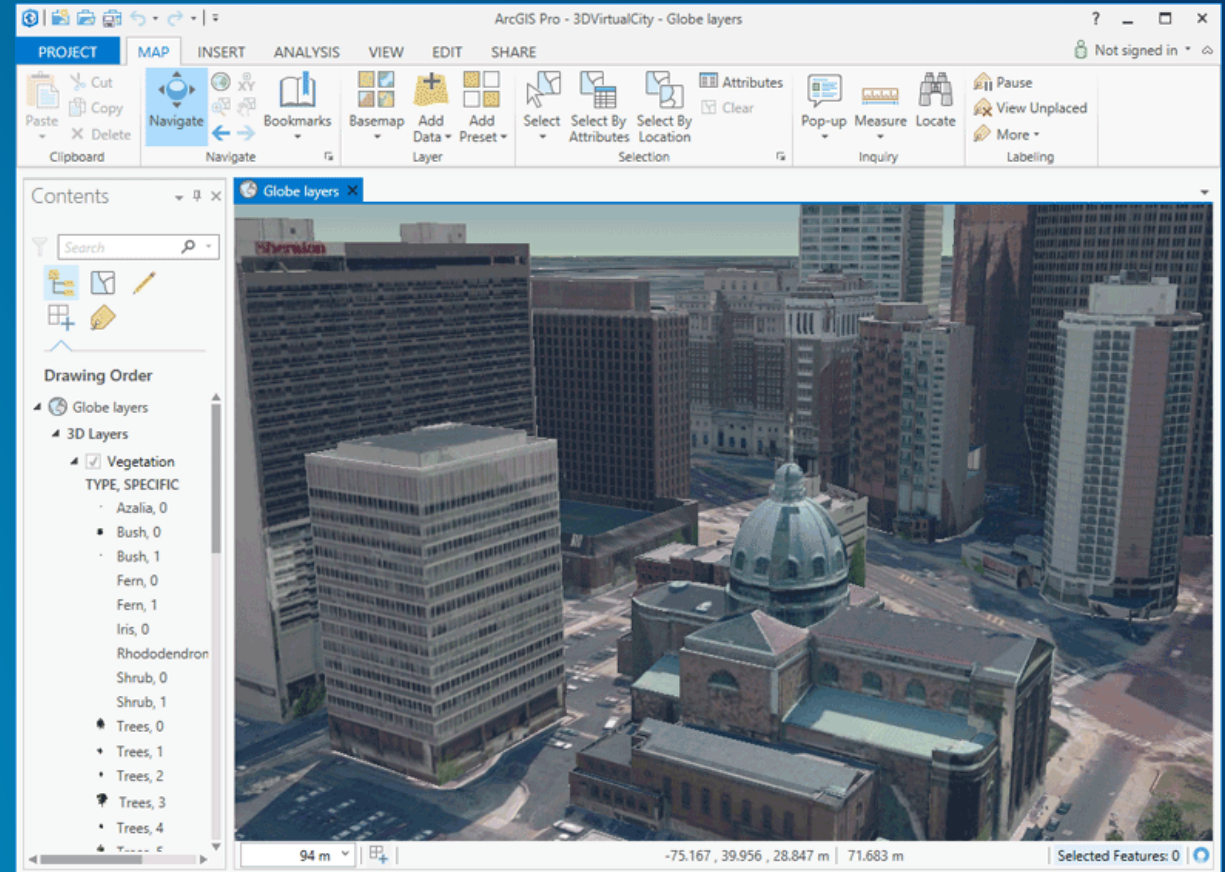
[-] Extensions

- Spatial Analyst
- 3D Analyst
- Network Analyst
- Geostatistical Analyst
- Data Reviewer
- Workflow Manager

Can I virtualize ArcGIS Pro?

Yes, ArcGIS Pro virtualizes well

- Citrix (XenApp and XenDesktop)
- Vmware (Horizon View)
- Microsoft (Hyper-V VDI)



ArcGIS Pro in virtualized environments

How can I customize ArcGIS Pro?

- Use
- Configure
- Automate
- Extend

Tasks

Ribbon

Quick Access Toolbar

Tab

Context

ArcGIS Pro - MyProject - Zion 3D

PROJECT MAP INSERT ANALYSIS VIEW EDIT SHARE

Clipboard

Explore

Navigate

Bookmarks

Basemap

Add Data

Add Data

Preset

Layer

Group

Button

Task: Share the Route Analysis

1. Write Output Directions to text file
2. Create a Web Layer from Output_Directions

Write Output Directions to text file

Parameters | Environments

Input Rows

Output_Directions

Output Location

MEAUCKuwait

Output Table

directions.txt

Expression

Project ta
Use to m
the proje
set optio

Custom

Python

```
import arcpy  
  
class Toolbox:  
    def __init__(self):  
        """Python  
        """  
  
    self.label = "  
    self.alias = "  
    self.description = "  
  
    # List of tools  
    self.tools = [PythonToolbox]
```

.NET API

Search Explorer

- References
 - ArcGIS
 - ArcGIS.Core
 - ArcGIS.Desktop.Catalog
 - ArcGIS.Desktop.Core
 - ArcGIS.Desktop.Editing
 - ArcGIS.Desktop.Extensions
 - ArcGIS.Desktop.Framework
 - ArcGIS.Desktop.Mapping
 - ArcGIS.Desktop.Shared.Wpf
 - Microsoft.CSharp
 - PresentationCore

More Questions?



Understanding our world.