



Road Ahead - ArcGIS Online

Andrew Stauffer

Paul Ross

Web GIS



Providing an Interconnected Platform

Online

An Integrated Web GIS



Apps

Portal



Access / Identity

Providing Mapping, Analysis, Data Management, and Collaboration



Services

*Available on the Open Web . . .
. . . and On-Premises*



Apps



Maps and Content



GIS Capabilities



Portal



- **Ready to Use Apps**
 - **Mapping: Viewers, Collector, Navigator, Explorer, Dashboard ...**
 - **Business: Office, SharePoint, Cognos, Salesforce ...**
- **Tools for Developers**
 - **API's for Content and Data**
 - **Templates and scripts on GitHub**
 - **Extending applications – WAB, App Studio**



Maps and Content

- A Ready-to-use **Living Atlas** of thousands of topics
 - Dynamic maps and layers
 - Maps for analysis
 - Imagery and basemaps
 - Demographics and lifestyle
 - Boundaries
 - Landscape
 - Community maps
 - Transportation, urban systems and Earth observations
 - Historical



GIS Capabilities

- **Visualization**
 - Smart mapping
 - Scenes
- **Analytics**
 - Best locations
 - Detect and quantify patterns
 - Geocoding
 - Make predictions
 - Directions, routing, logistics
 - GeoEnrichment



Portal

- **Administration**
 - **Manage people, contents and licenses**
 - **View status and system health**
 - **Customize your site**
- **Security**
- **Privacy**
- **Compliance**

- Post ideas for enhancements, suggest new features or even new products
- Comment on the ideas of others
- Vote ideas up or down
- Check the status
- Interact with Esri teams

ArcGIS Ideas

Search Ideas

Login

esri

Post

My ideas

Workspaces

Categories

- Products
 - 5920 ArcGIS Desktop
 - 642 ArcGIS Desktop Extensions
 - 149 ArcGIS Engine
 - 310 ArcGIS Explorer
 - 1781 ArcGIS Online
 - 117 ArcGIS Runtime
 - 1409 ArcGIS Server
 - 123 ArcGIS Pro
 - 122 Business Analyst
 - 53 Esri CityEngine
 - 2 Esri Roads and Highways
 - 1001 Geodatabase
 - 222 Imagery
 - 662 Maps and Content
 - 636 Mobile GIS
 - 391 Other Products
 - 143 Production Mapping (PLTS)
 - 42 Solution Templates
 - 96 Web Appbuilder
 - 677 Web Apps and APIs
- Service
- Industry
- ArcGIS Marketplace

User Participation

	Today	Total
Ideas	2	9908
Votes	15	149766*

*Updated hourly

Your Ideas in Motion

Recent Ideas

Time	Under Consideration	Recently Implemented
3:47 PM	Log in to the JavaScript Sandbox	
4:50 AM	Need class for OAuth client credentials in iOS/Android sdk	
3 days ago	Enabling PostGIS geometry format for ArcGIS Feature Services	
Jul 1, 2015	Configure widgets open by default in web map templates & web appbuilder	
Jul 1, 2015	Expose all ArcGIS Server publish parameters/capabilities/settings in arczy	

Leaderboard

Contributor	Ideas	Votes	Comments
yuk166	1	2	0
jdickinson_bpa	1	1	0

*Updated weekly

.NET Android Announcement
 ArcGIS 10 ArcGIS
 Content ArcGIS Data Reviewer
 ArcGIS Desktop ArcGIS
 Methods ArcGIS Mobile ArcGIS
 Online ArcGIS
 Server ArcMap BAO bao-only

practices Business
 business Analyst Online
 gn Community
 munity Maps data
 Editing Esri Data Flex
 eoprocessing GIS
 a JavaScript maps
 blic safety Python
 s sewer stormwater
 plates updates
 wastewater water

Development Themes

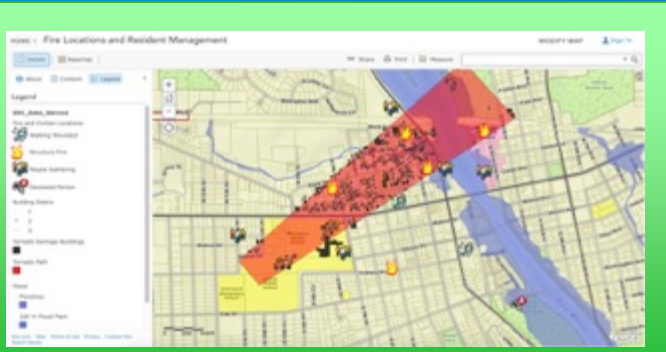
- **Advancing on multiple aspects:**
 - **Administration across the Organization**
 - **Improving the User Experience**
 - **Evolve capabilities of Web GIS**

Online Groups Where All Members Can Update Items

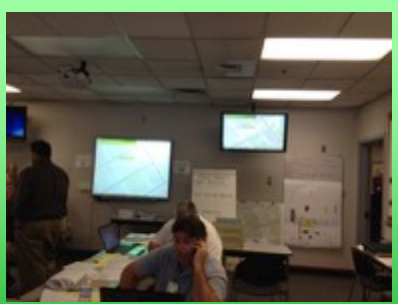
- Administrators create groups where members of the group can update shared items
- Updates can include changes to layers, configuration, item details, tags and metadata
- Members update the same shared item (not simultaneous editing)

It helps you ...

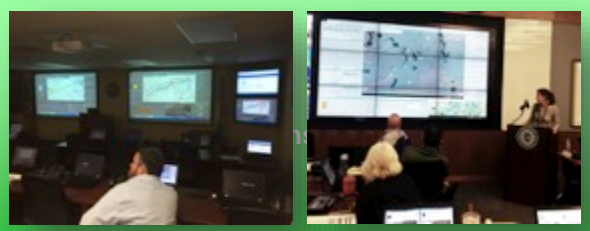
- Facilitate updates to maps in operations centers and EOC's
- Efficiently manage items that are included using groups
- Use groups to control feature layer updates



City of St. Charles – EOC Exercise Map



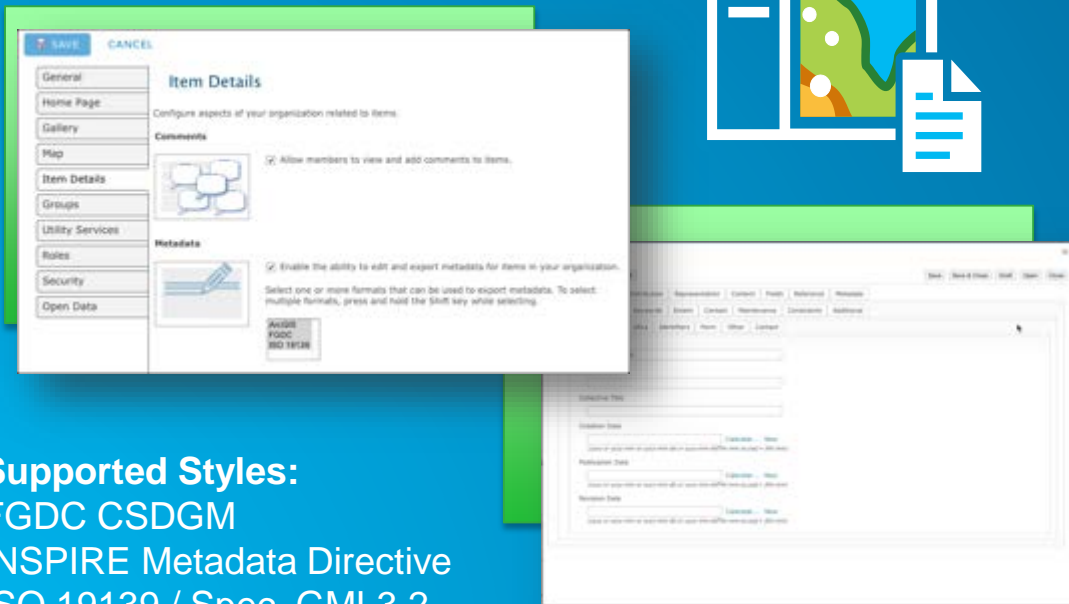
City of Napa - Earthquake



Boston - Marathon and Parade

Online Standards Based Metadata

- Admins can enable, then set one of the supported styles for their organization
- Built-in app to import, create and edit the metadata
- Shared items enable viewing or downloading (including Open Data)



Supported Styles:

FGDC CSDGM

INSPIRE Metadata Directive

ISO 19139 / Spec. GML3.2

North American Profile of ISO19115 2003

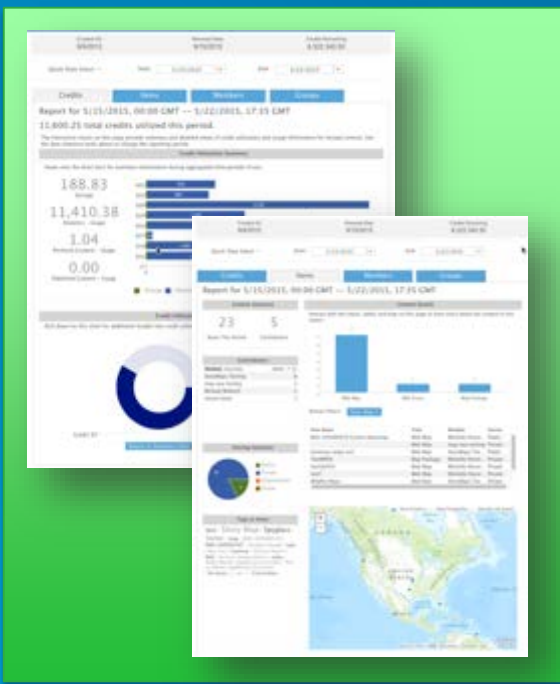
It helps you ...

- Document and communicate the authority of the data
- Add existing metadata to Online, then at 10.4 to Portal
- Provide more information than on the item detail page
- Meet government obligations
- Provide metadata with items shared through open data

Continue to Improve Visibility and Control



Bulk user assignment
to groups



Reporting

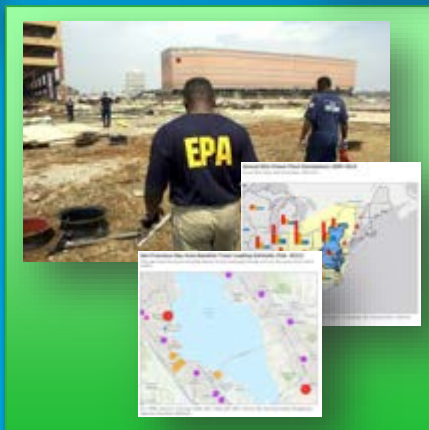
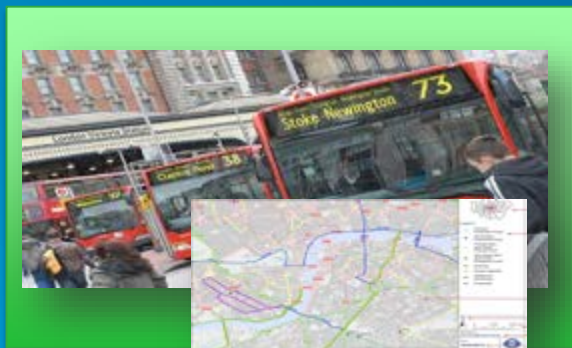
- Premium content usage
- Credits for hosted layers

It helps you ...

- More easily manage groups of users
- Provide access to Marketplace apps
- Adopt the platform by providing more visibility into how ArcGIS Online is being used

Online Enhanced Printing

- Build and publish custom layouts using ArcGIS Server
- Admin defines layouts for users
- User picks template and format
- Title and author automatically added to printed map



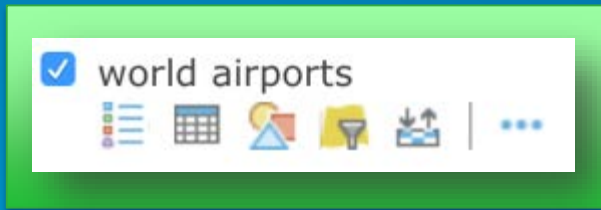
It helps you ...

- Provide higher-quality printed maps
- Use ArcGIS Online for existing workflows/needs
- Replace legacy apps with Online

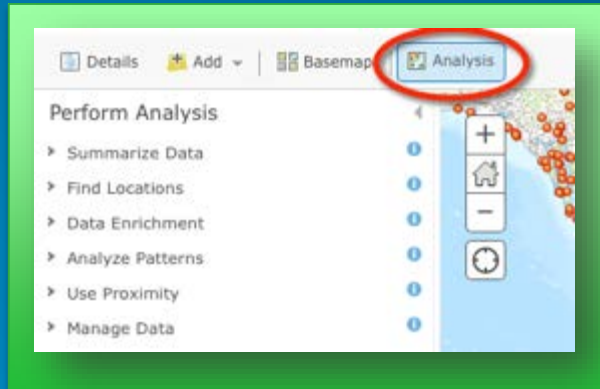
ArcGIS Online Demo

- Organization Status Page
- Printing
- Creating Groups Where All Members Can Update Items

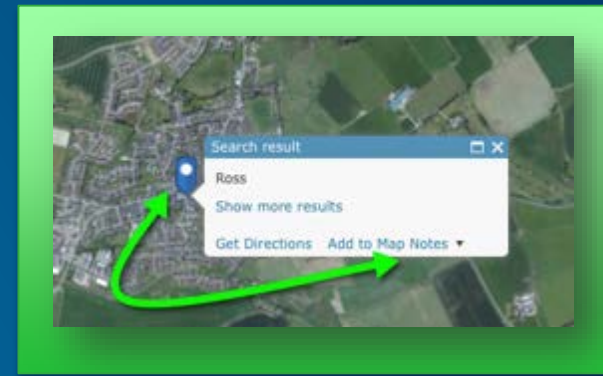
Online Map Viewer Enhancements



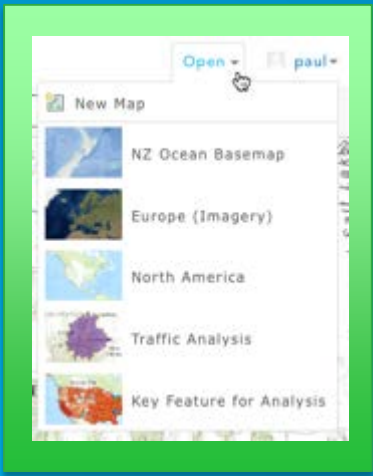
Buttons for Common Layer Configuration



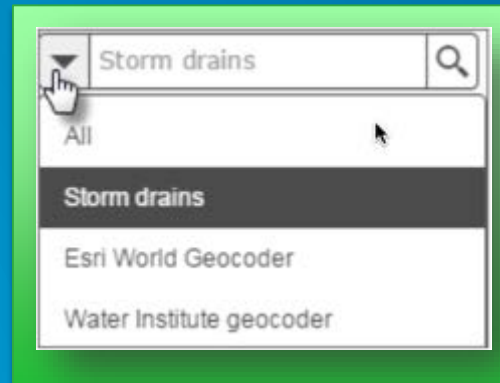
Easier to find Analysis Tools



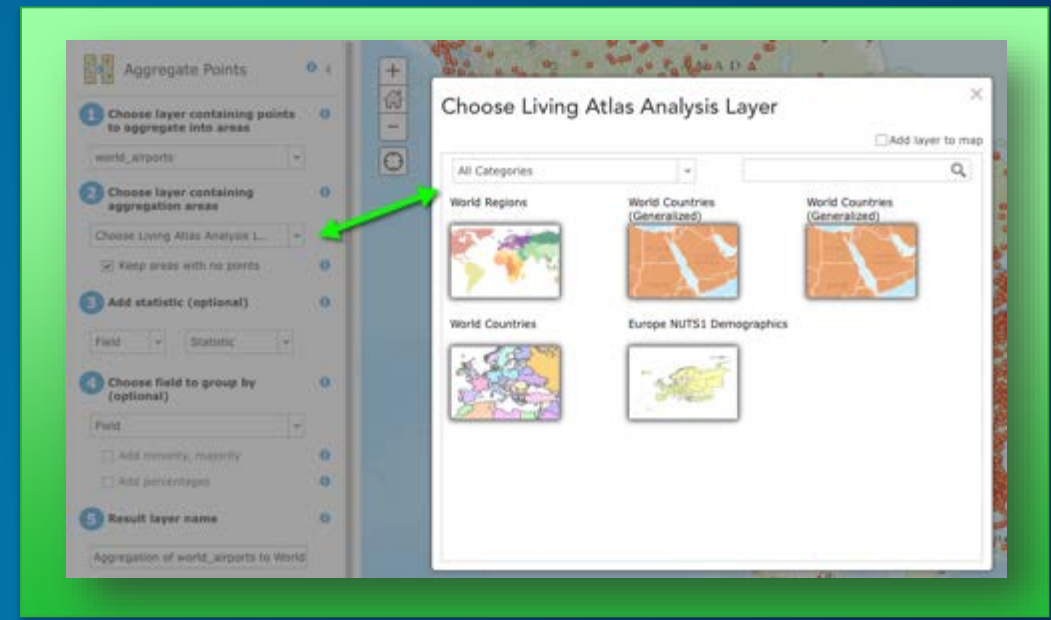
Add Search Results as Layers



Access Recently Viewed and Saved Maps



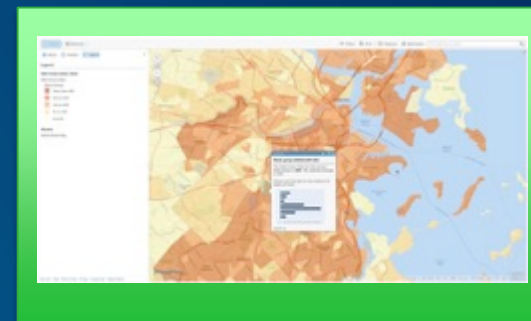
Search Layers and Locations



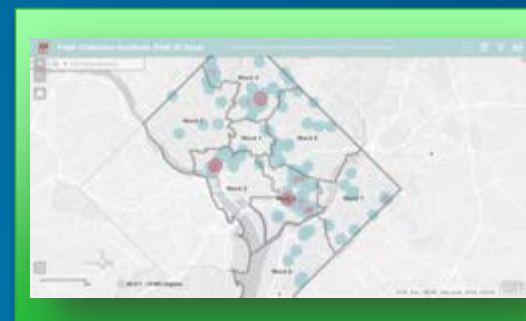
Discover and Access Living Atlas Layers for Analysis

Online Smart Mapping

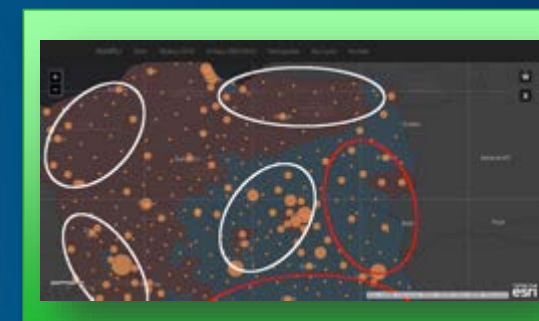
- Continued Innovation
 - Symbol size adjustments for changes to scale
 - More color ramps for styling
 - Synchronize visible ranges between layers
- Updates based on user feedback
 - More vibrant default color ramps
 - Visible ranges not automatically set, suggested
 - Better default transparency
 - Re-introduce time-based thematic maps



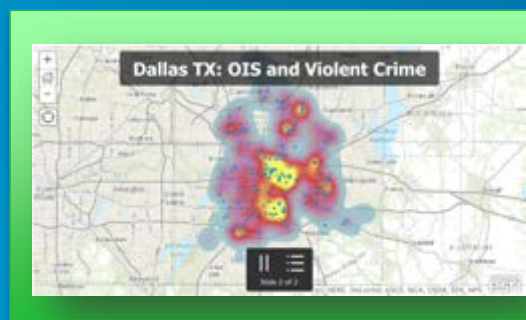
City of Boston



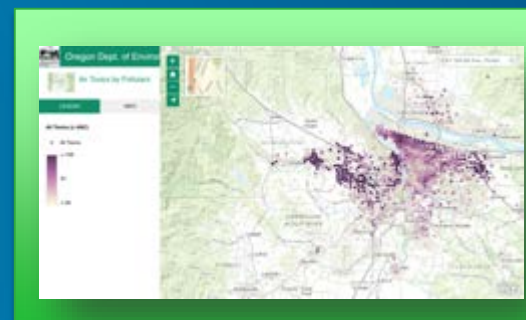
Washington DC



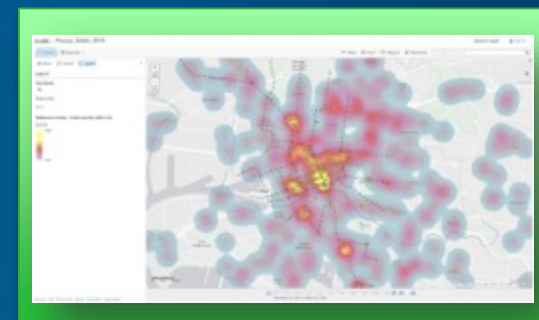
Visit Poland



Police Foundation



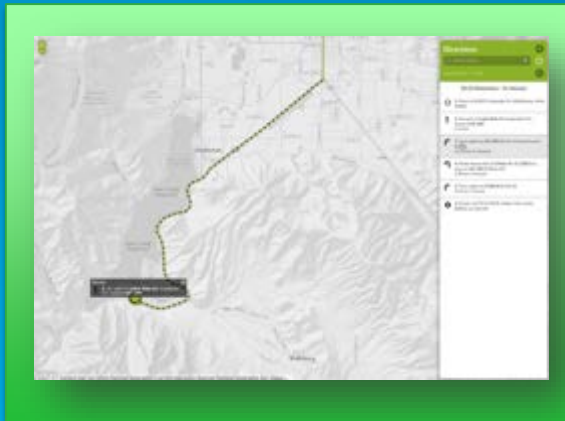
Oregon Dept. of Environmental Quality



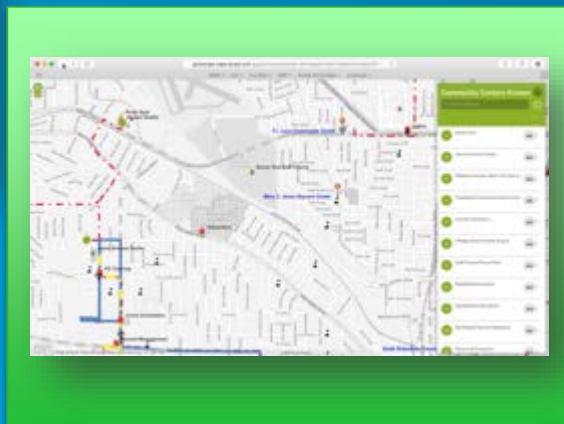
City of Melbourne

Online Configurable App Templates

- Easily provide premium services in public maps and apps
 - Layers – landscape, demographic maps
 - Services – Traffic, routing

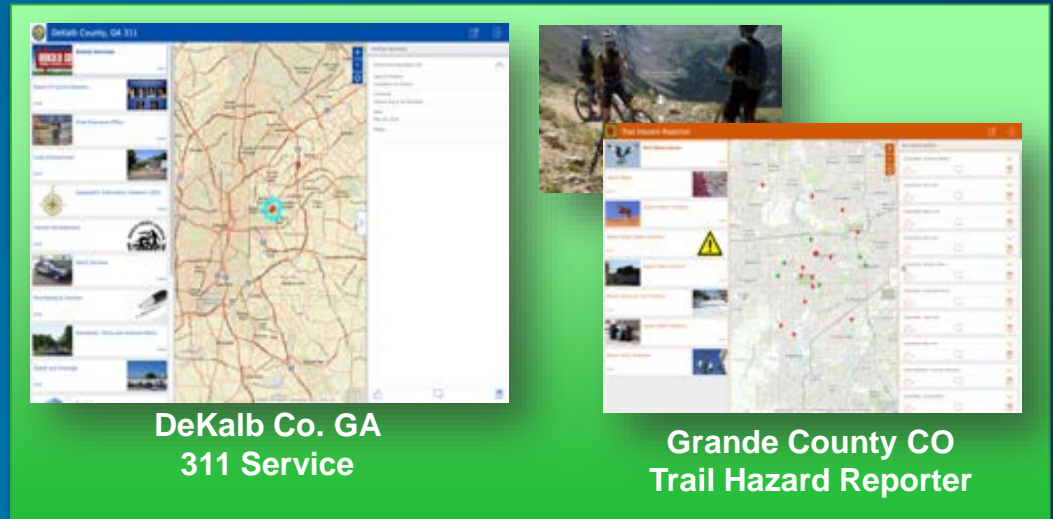


Utah DNR
Office Routing App



City of Jackson
Community Centers

- Crowd source Manager/Reporter

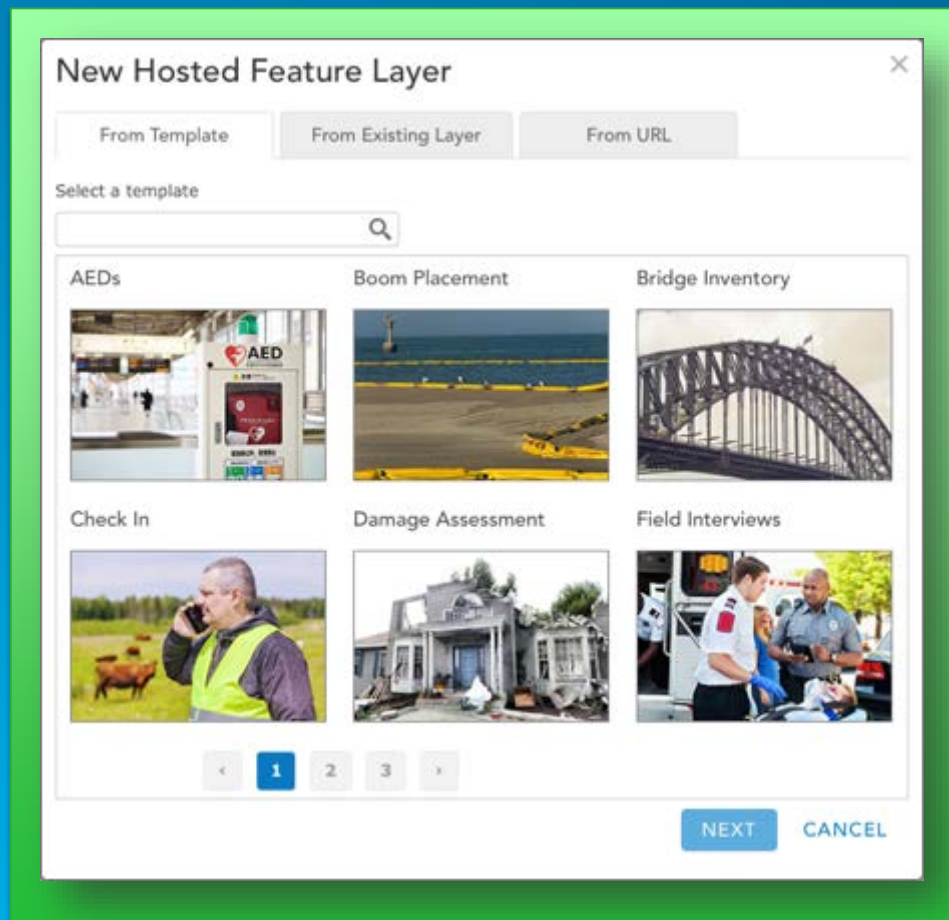


DeKalb Co. GA
311 Service

Grande County CO
Trail Hazard Reporter

- Template-wide improvements:
 - Standard configuration panels
 - Improved doc for configuration options
 - Easier search configuration

Online Feature Layer Templates for Collector



- Templates for creating new feature layers
- Use directly or fine tune them with the map viewer

Examples:

- Inspections – restaurants, construction, bridges, permits
- Damage assessment
- Road closure
- Water quality assessment



Online Custom Travel Modes for Routing and Analysis

- Administrators configure custom travel modes by setting:
 - Impedance, time/distance, U-turn policy, vehicle restrictions
- Users access organizational travel modes across the platform when routing and performing analysis – map viewer, apps and desktop

Directions and Routing

CONFIGURE TRAVEL MODES

SAVE TRAVEL MODE DISCARD CHANGES

Default Travel Mode: [Dropdown]

Name: Hazmat Trucking Time

Description:
Travel Mode Description
1024 characters remaining

Type: Truck

Impedance: TravelTime

Time Attribute: TravelTime

Distance Attribute: [Dropdown]

U-turn policy: Allowed only at intersections and dead ends

Simplification tolerance: 30 Meters

Use Hierarchy

Attributes and Parameters:

Attribute Name	Apply	Parameters
Avoid Carpool Roads	<input checked="" type="checkbox"/>	Restriction Usage
Avoid Express Lanes	<input checked="" type="checkbox"/>	Restriction Usage

Create Drive-Time Areas

1 Choose point layer to calculate drive-time areas around

TargetStores [Dropdown]

2 Measure

- Driving Time
- Walking Time
- Hazmat Trucking Time**
- Trucking Time
- Driving Time

It helps you...

- Model their specific routing properties for better routes and analytic results
- Use the modes without having to select all the settings each time
- Standardize travel modes across the organization – especially those with many types of vehicles

ArcGIS Online Demo

- Map Viewer Enhancements
- Analysis with Living Atlas Layers

What's Coming?

- Advancing on multiple aspects:
 - Administration across the Organization
 - Improving the User Experience
 - Evolve capabilities of Web GIS

Administration Across the Organization

- **More manageable for large numbers of users and items**
- **A sustained focus on security**
- **Deliver quality and faster performance**

Administration across the Organization

- **Plans**

- Credit usage management
- Social logins for constituent engagement
- Logs for audits
- Security certifications
- Reporting
- Notifications: Group, Item, User

Online New GIS Capabilities

- **Mapping**
- **Analysis**
- **Data Management**
- **Collaboration**
- **OGC Support**

Online New GIS Capabilities

- **Plans**

- Sync online and on-prem web maps, layers and features
- Share and consume registered OGC layers – WMTS, WFS
- Serve hosted data in OGC formats
- Complex symbology
- Smart mapping capabilities: Binning, dot density, clustering, comparison
- Vector Tiles: Publish, update and style
- Geohash Visualization
- Webmaps that are floor-aware

ArcGIS Online Demo

- Vector Tiles
- Smart Mapping

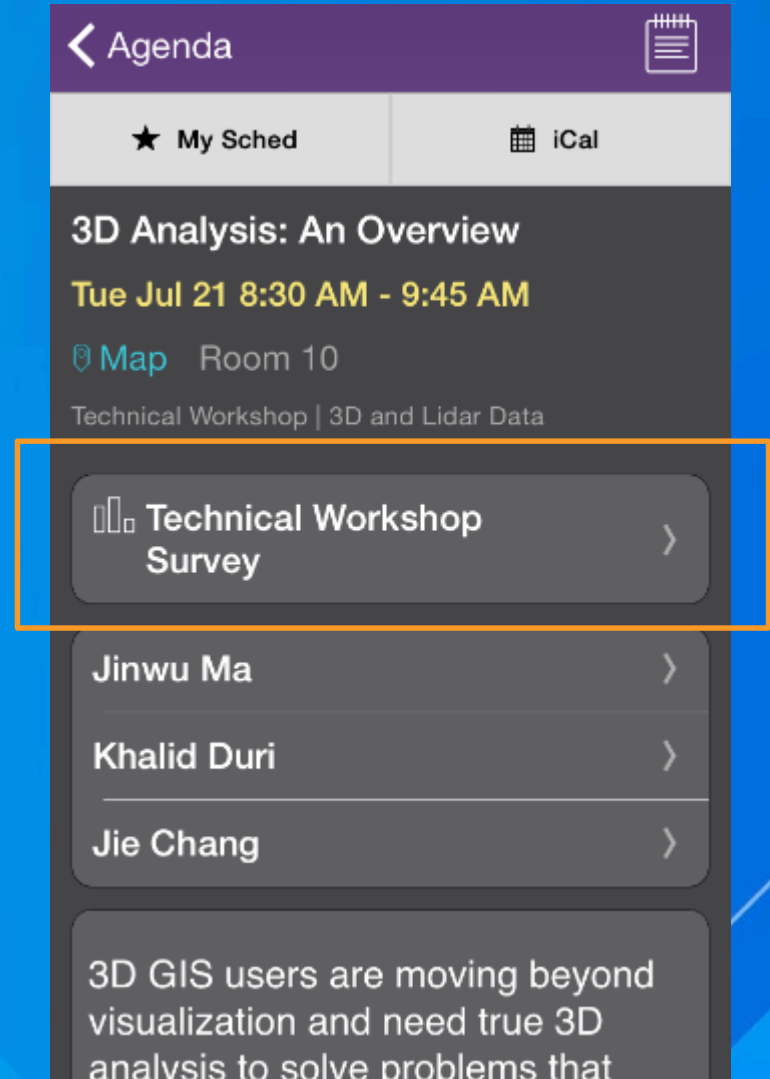
Improving and Enhancing the User Experience and Interface

- **Designs and improvements for both content creators and consumers**
- **Start at the heart of the product and work outwards**
 - **My Content, Search, Item Pages**
 - **Streamlining key workflows:**
 - **Creating and working with Content**
 - **Search – consistent UX for finding content**
 - **Enhanced Item pages for managing content**
 - **Social Collaboration**
 - **Map Viewer**
 - **Home Page / Gallery**
 - **App creation and building**
- **Release in waves**

Q&A

Thank you...

- Please fill out the session survey in your mobile app
- Select **“Road Ahead - ArcGIS Online”** in the Mobile App
 - Use the Search Feature to quickly find this title
- Click **“Technical Workshop Survey”**
- Answer a few short questions and enter any comments



Want to learn more?

- **Documentation**
 - <http://doc.arcgis.com/en/arcgis-online/>
- **Related Esri Training and Tutorials**
 - <http://www.esri.com/training/main/arcgis-online-training>
- **Additional Resources**
 - **Case studies by feature:**
<http://www.arcgis.com/features/>
 - **Maps we love:**
<http://www.esri.com/products/maps-we-love>
- **Come see the team and talk to use at the Island!**



Understanding our world.