



ArcGIS for Server: What's New

Philip Heede, Jay Theodore

Agenda

- **GIS server**
- **Web GIS: Portal for ArcGIS**
- **ArcGIS for Server Extensions**
 - **GeoEvent Extension**
 - **Production Mapping**

Primary target for new functionality

- A lot of different types of new functionality.
- Presentation has tags throughout to help guide you



Users + Publishers



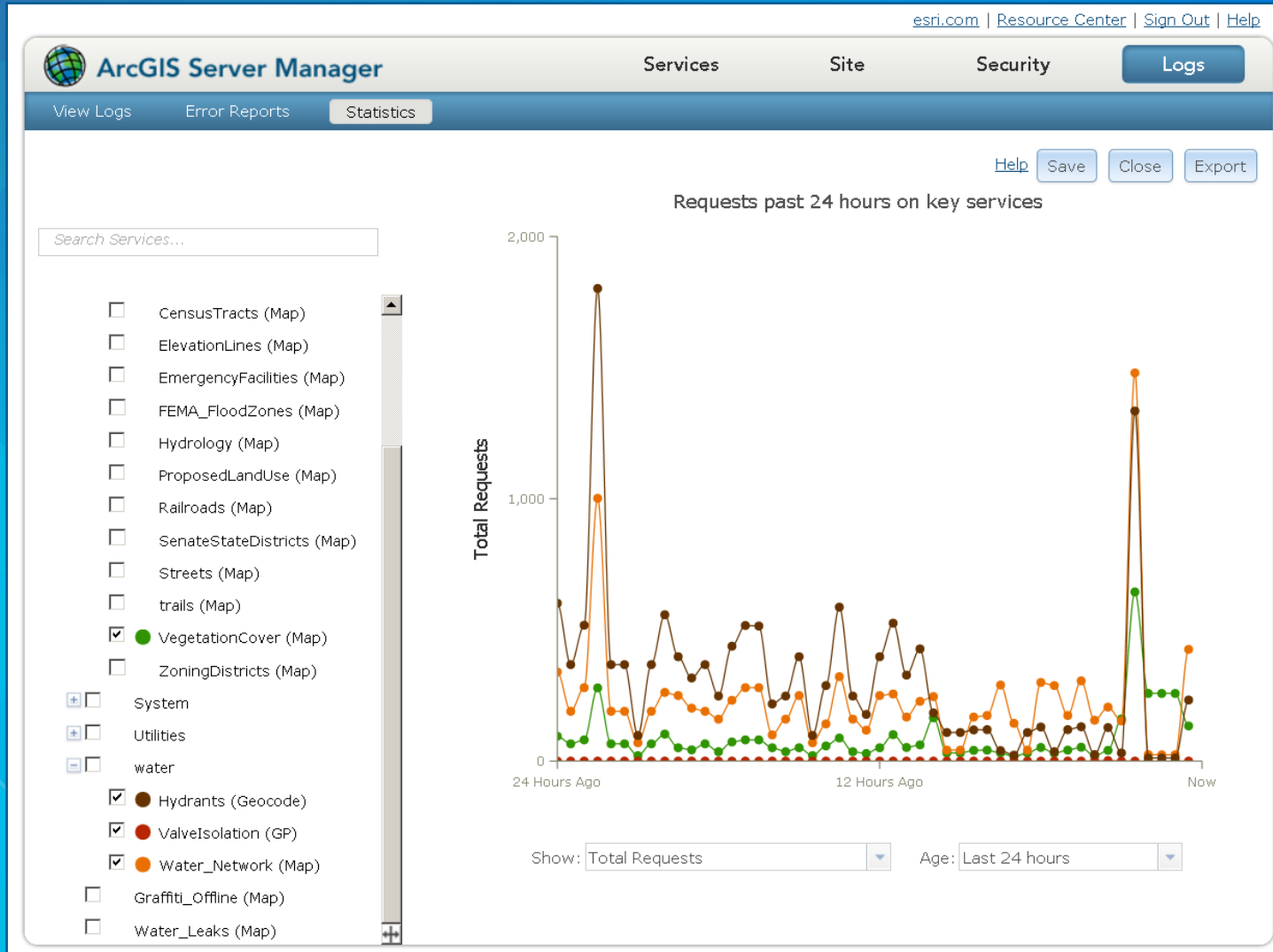
Administrators



Developers

GIS server





Service Usage Statistics

Monitor total requests, average response time, and timeouts

Service directory

Layers:

- [Water Control Valves](#) (0)
- [Water Fittings](#) (1)
- [Water Hydrants](#) (2)
- [Water Mains](#) (3)

Re-publish

Without static layers

Layers:

- [Water Control Valves](#) (0)
- [Water Fittings](#) (1)
- [Water Hydrants](#) (2)
- [Water Casings](#) (3)
- [Water Lateral Lines](#) (4)
- [Water Mains](#) (5)

With static layers

Layers:

- [Water Control Valves](#) (0)
- [Water Fittings](#) (1)
- [Water Hydrants](#) (2)
- [Water Casings](#) (5)
- [Water Lateral Lines](#) (4)
- [Water Mains](#) (3)



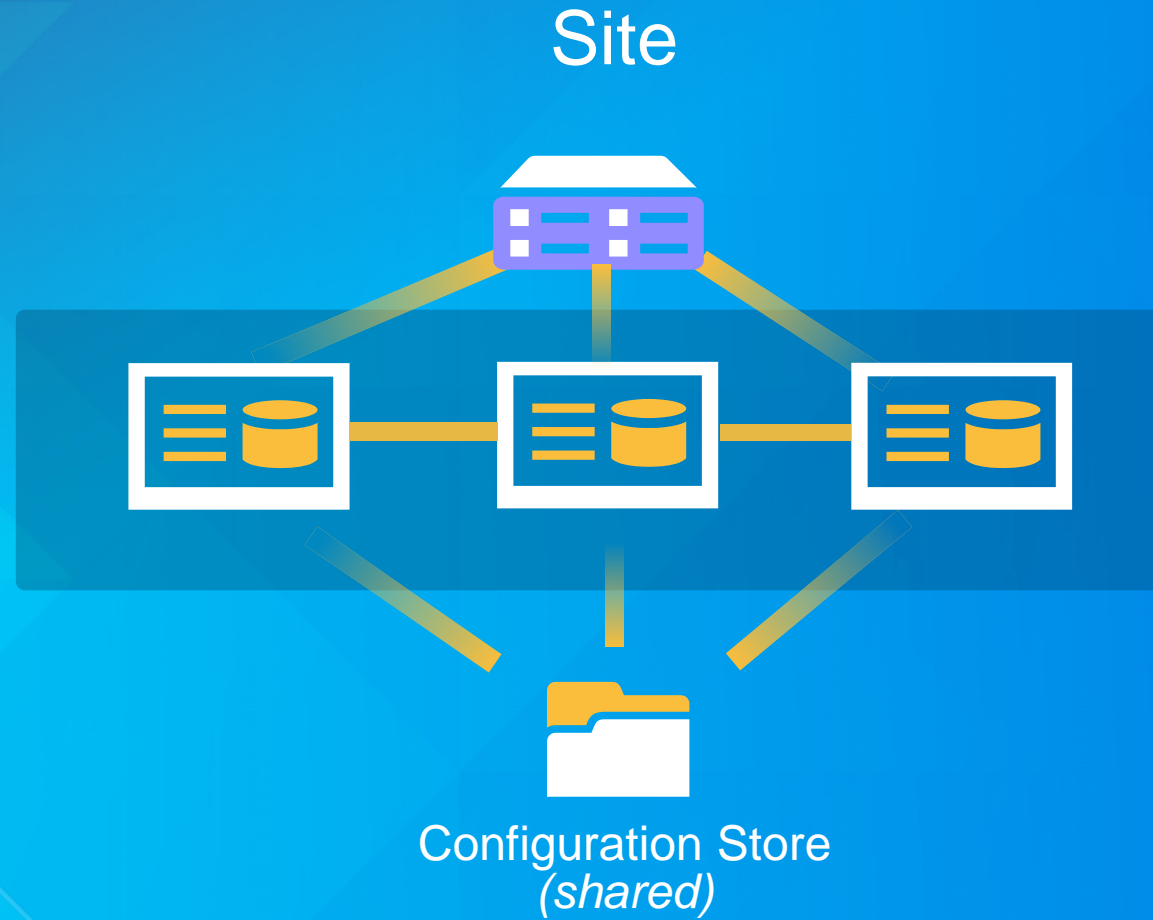
Preserving layer IDs

Layer IDs do not change when map service is republished

Demo

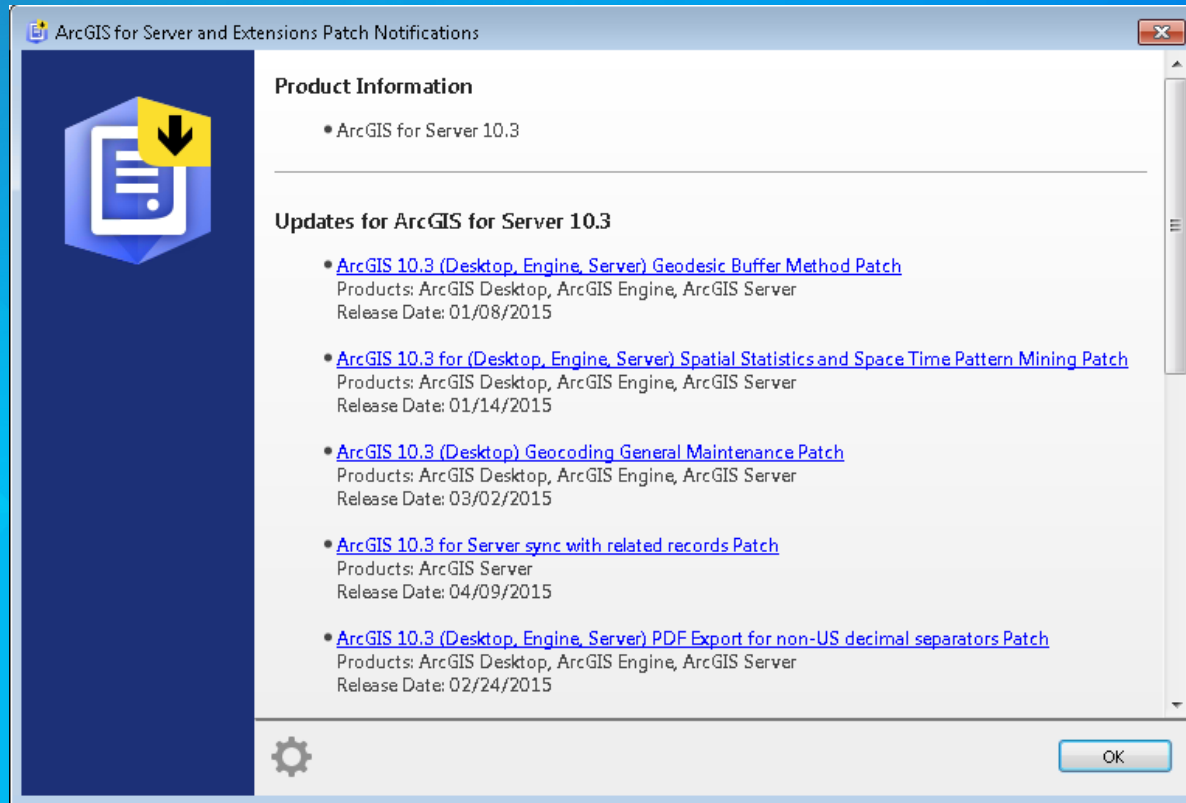
Preserving layer IDs





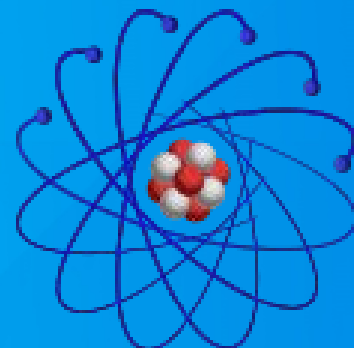
Single Cluster Mode

Improved scalability for
multi-machine sites



Check for Patches and Updates

Supports proxy server

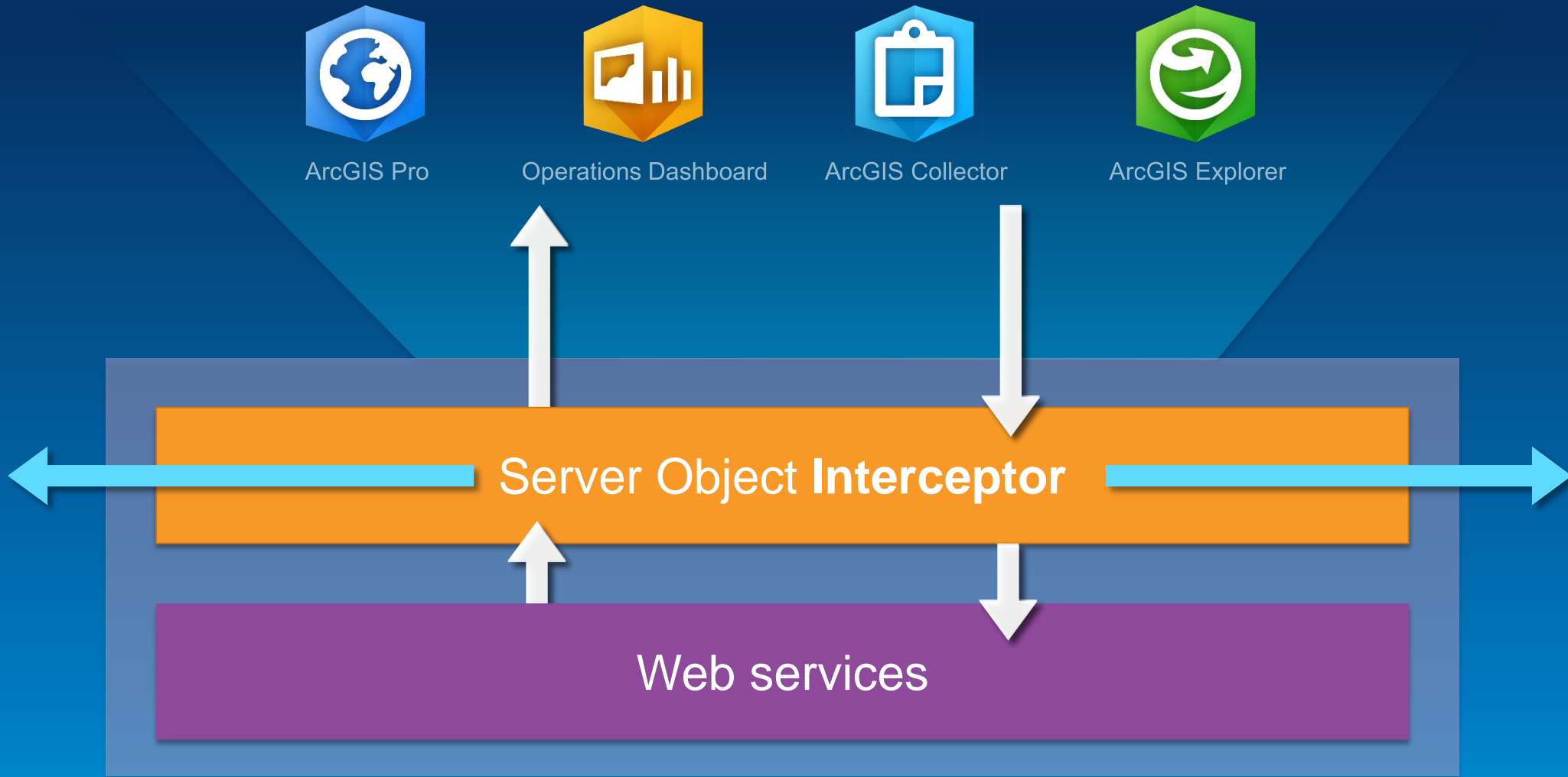


Scientific Linux



Expanded Linux distribution support

Three new RHEL derived distributions

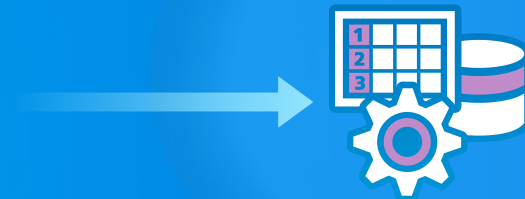


Server Object Interceptors



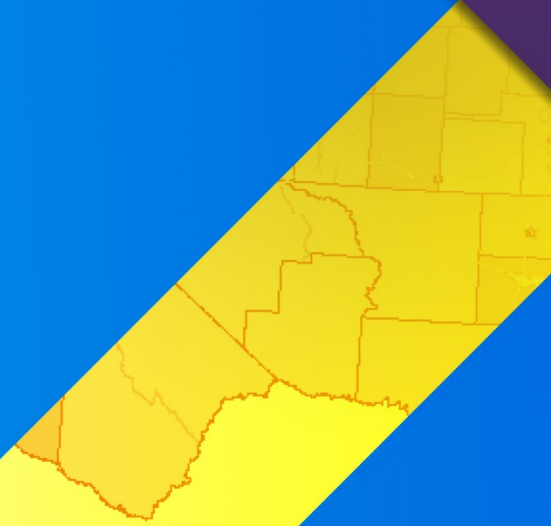
Potential use-cases for Server Object Interceptors...

- **Fine grained security**
- **Data and business integration**
- **And more..**



Demo

con terra



Web GIS

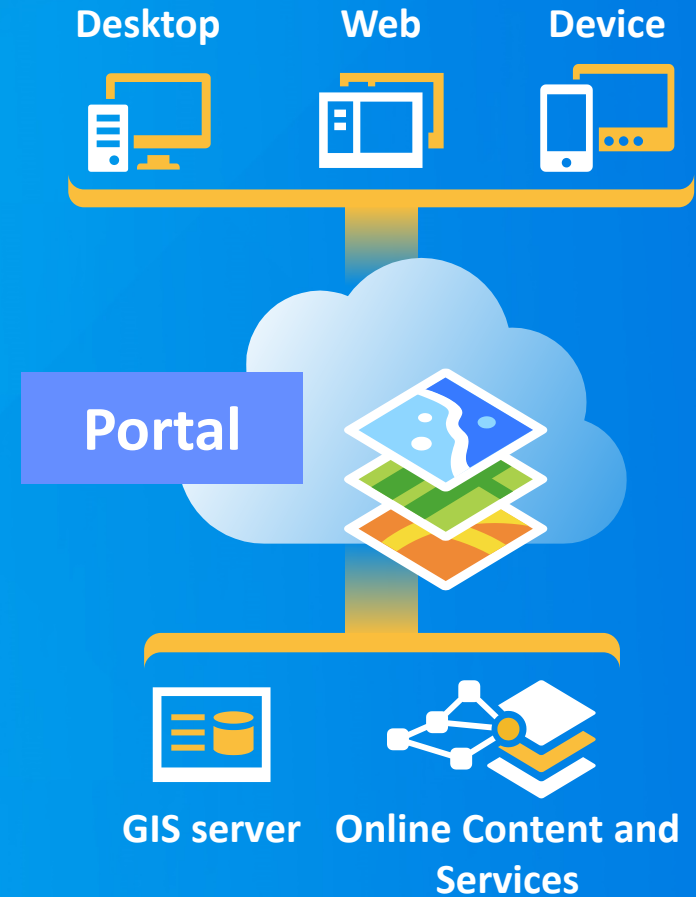
Portal for ArcGIS



10.3.1

ArcGIS for Server includes:

- Apps
- A Portal
- GIS Server
- Data Management





Web GIS



Maps



Apps



Identity



SDK



Analytics

Three big new things for users with Portal for ArcGIS 10.3.1



**Smart Mapping
User Experience**

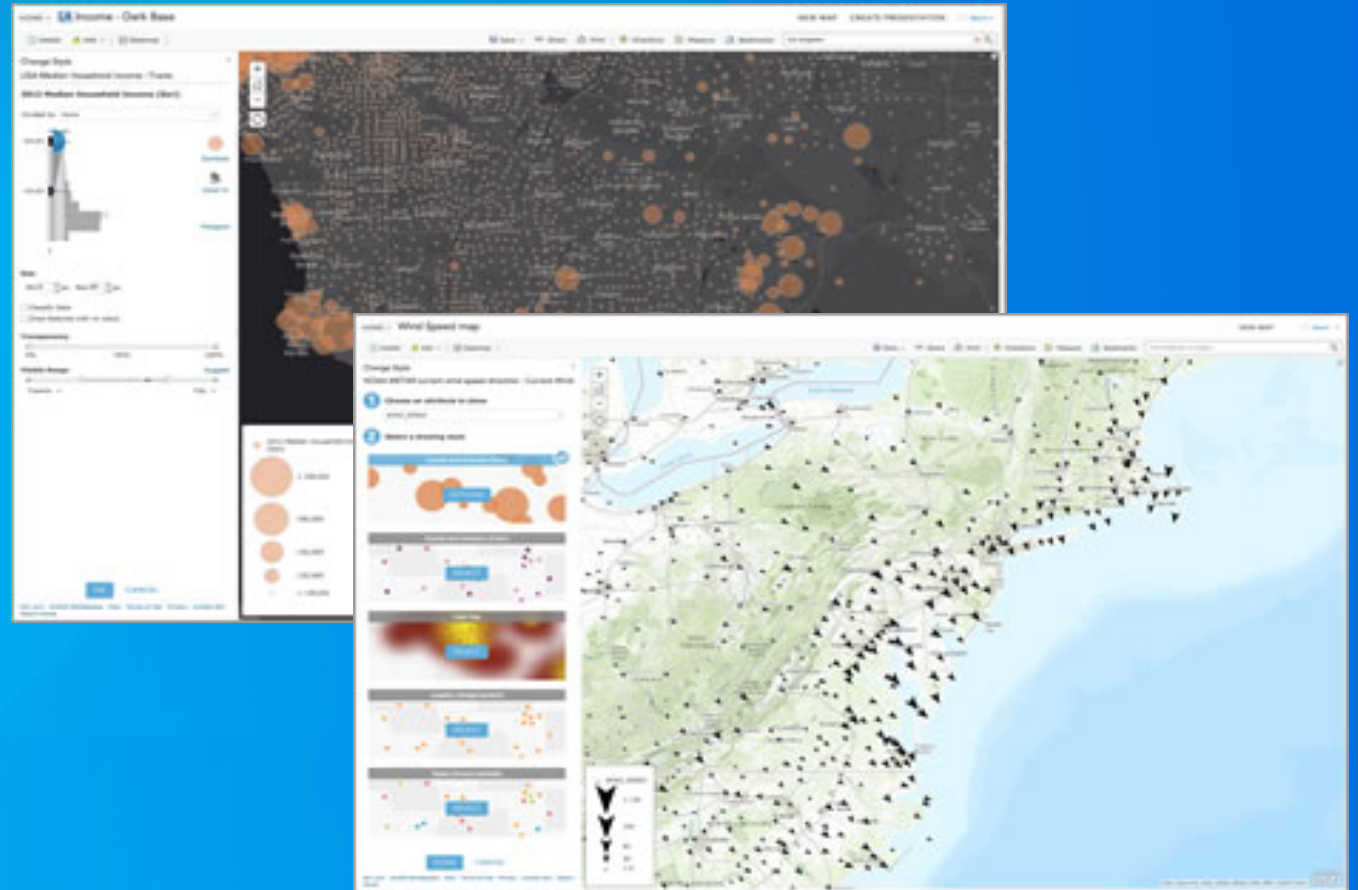


**Web AppBuilder
for ArcGIS**



**Support for
3D data**

- Quickly make useful and visually stunning maps
 - Smart defaults based on underlying data
 - Full flexibility



Demo

Smart Mapping



Print

Map Title: ArcGIS WebMap

Layout: Letter ANSI A Landscape

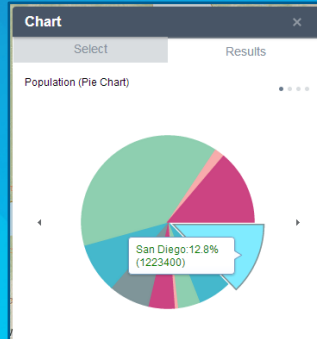
Format: PDF

Advanced Print

Map scale/extent:
 Preserve: map scale map extent
 Force scale: current

Layout metadata:
 Author: ArcGIS WebApp Builder
 Copyright:

Include legend:



Options Zoom to Clear Selection Refresh

UID	Latitude	Longitude	Date	City	State	Country	Event	Tour	Venue	url	FID	CreationDate	Creator	EditDate
29.730278	-91.4316	45/1092 5:00:00 PM	Houston	TX	USA		Zoo's 1st Leg	The Summit	http://en.wikipedia.org	12	4/18/2013 10:25:55 AM	cmahlin_jr@esri	4/18/2013 10:25:55 AM	
41.311488	-72.820511	12/13/1889 4:08:00 PM	New Haven	CT	USA		Boy 2nd Leg	Toad's Place	http://www.toadsp.com	13	4/18/2013 10:25:55 AM	cmahlin_jr@esri	4/18/2013 10:25:55 AM	
33.279908	-97.732219	4/6/1992 5:00:00 PM	Austin	TX	USA		Zoo's 1st Leg	Franklin Center	http://en.wikipedia.org	14	4/18/2013 10:25:55 AM	cmahlin_jr@esri	4/18/2013 10:25:55 AM	
38.851039	-75.933808	12/14/1889 4:08:00 PM	Philadelphia	PA	USA		Boy 2nd Leg	Blou Cafe		15	4/18/2013 10:25:55 AM	cmahlin_jr@esri	4/18/2013 10:25:55 AM	
33.424817	111.930643	4/6/1002 6:00:00 PM	Tampa	FL	USA		Zoo's 1st Leg	Arboretum Center	http://en.wikipedia.org	16	4/18/2013 10:25:55 AM	cmahlin_jr@esri	4/18/2013 10:25:55 AM	

1 - 20 of 464 results 0 selected

20+ widgets

Home Web AppBuilder for ArcGIS Water Network Leak Manager Derek

Themes Map Widgets Attributes

Water Network Leak Manager Water Dept

Esri World Geocoder

Set the widgets in this controller

Sidebar C... Attribute T... Coordinate Footer Geocoder Header Home Button My Location Overview ... Scalebar Splash Find water... Show affec... Widget

Launch | Previews | Saved

32189627.217, Y: 16822337.009 (Foot) Cit... ile, IL | City of Naperville, County of DuPage, Count... All Rights Reserved



Web AppBuilder for ArcGIS

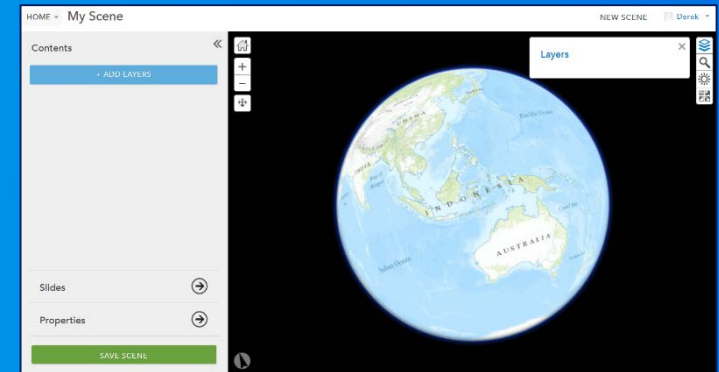
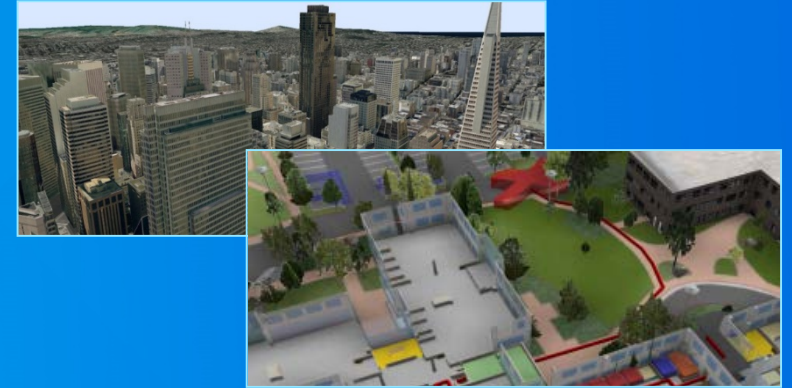
Create new web apps without programming



Demo

Web AppBuilder

- Ability to publish 3D building models (multipatch data)
- Scene Viewer in Portal for ArcGIS



Scene Services

Demo

Publish and consume web scene

Management and Administration Enhancements



**More Administrator
Management tools**



Security Enhancements
Custom roles, SAML,
Enterprise groups



**Support for many
hosted feature services
(ArcGIS Data Store)**

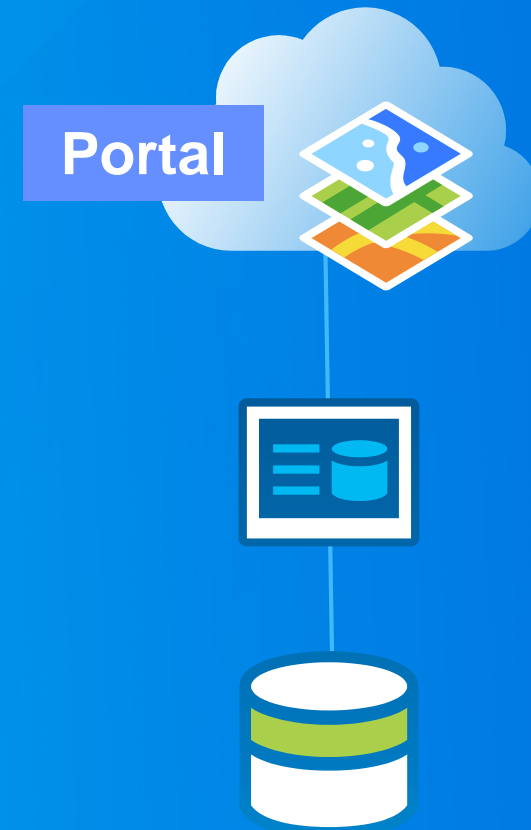


Licensing ArcGIS Pro



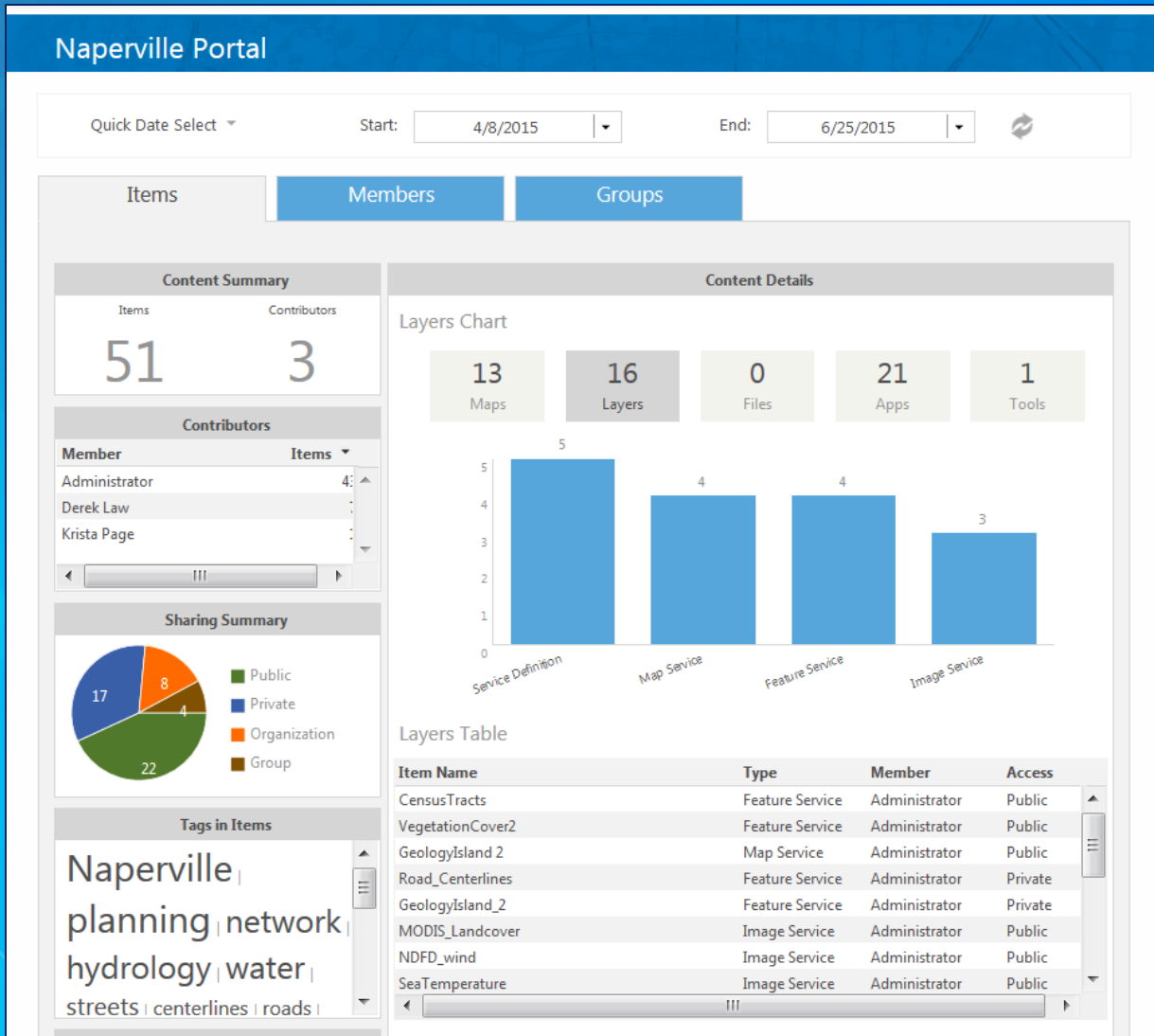
Portal logging

- **Component of ArcGIS for Server**
 - Separate software install
- **Designed to support hosting servers in Portal**
 - Enables Scalable Hosted Feature Services
 - Enables 3D scene services
- **Enterprise friendly**
 - Supports high availability setups
 - Automatic backups, fully configurable



ArcGIS Data Store

Included with ArcGIS for Server



Activity Dashboard

Activity-based metrics and real-time reports about your Portal

HOME GALLERY MAP GROUPS MY CONTENT MY ORGANIZATION siteadmin

Groups

SAVE CANCEL

Name:
Group Name

Summary:

Description:

Size

Enter the group description here

Status:

- Private (Users cannot find this group and can join by invitation only.)
- Organization (Users within your organization can search for and find this group.)
- Public (Users can search for and find this group.)

Users:

- Can join by invitation only
- Can apply to join group
- From an Enterprise Group:

Enterprise group name SEARCH FOR GROUP

Select Group

Select an enterprise group by clicking on the row of the desired enterprise group, then clicking Select Group. Use the search field to narrow your results.

Find Group: SEARCH

Group Name	Description
AVWORLD\Domain Computers	All workstations and servers joined to the domain
AVWORLD\Domain Guests	All domain guests
AVWORLD\Domain Admins	Designated administrators of the domain
AVWORLD\Domain Users	All domain users
AVWORLD\Group Policy Creator Owners	Members in this group can modify group policy for the domain
AVWORLD\Domain Controllers	All domain controllers in the domain
AVWORLD\Read-only Domain Controllers	Members of this group are Read-Only Domain Controllers in the domain
AVWORLD\Exchange Domain Servers	DO NOT move or rename - Exchange Domain

1 - 10 of 1000 results

Go to Page: GO SELECT GROUP CANCEL



Support for Enterprise Groups

Enabled when Portal is configured with Windows Active Directory or LDAP

SAVE CANCEL

General
Home Page
Gallery
Map
Item Details
Groups
Utility Services
Servers
Roles
Security

Security

Configure the security settings for your portal.

Policies

Allow access to the portal through SSL only.

Allow anonymous access to your portal.

Enterprise Logins

You can set up your portal so that your users will be able to sign in to Portal for ArcGIS using the same username and password that they use with your existing on-premises systems.

The key to this is through a technology known as identity federation that this section will help you set up through two actions.

SET IDENTITY PROVIDER



Set Identity Provider

Specify the properties to establish your portal's Enterprise Identity Provider.

Name:
adfs

Your users will be able to join:
 Automatically After you add the accounts to the portal

Metadata for the Enterprise Identity Provider will be supplied using:
 A URL A File Parameters specified here

URL:
<https://6111adfs.esri.com/federati>

Show advanced settings

SET IDENTITY PROVIDER CANCEL



Single Sign On through SAML

(Security Assertion Markup Language)

Industry standard for SSO and federation

- Provides auditing and troubleshooting tools designed for Portal administrators
- Provides the ability to monitor and query detailed events that occur within Portal
- Filter by:
 - Log level, source, start and end time, log code range, and by users

Portal Administrator Directory

Home > Logs > Query

Log Settings

The portal is currently logging events at the **DEBUG** level.
To change the level of detail at which portal logs events, click [Settings](#).

Query Log Messages

Query log messages by selecting from the following options, and clicking Query.

Log Level:

Source:

Start Time: *
Example: 2015-01-31T15:00:00

End Time: *
Example: 2014-12-31T09:00:00

Log Codes: *
Example: 200000-201999, 207026

Users: *
Example: admin, portaladmin

Message Count: *
*Optional

Format:

<http://myportal.esri.com/webadaptor/portaladmin/logs>



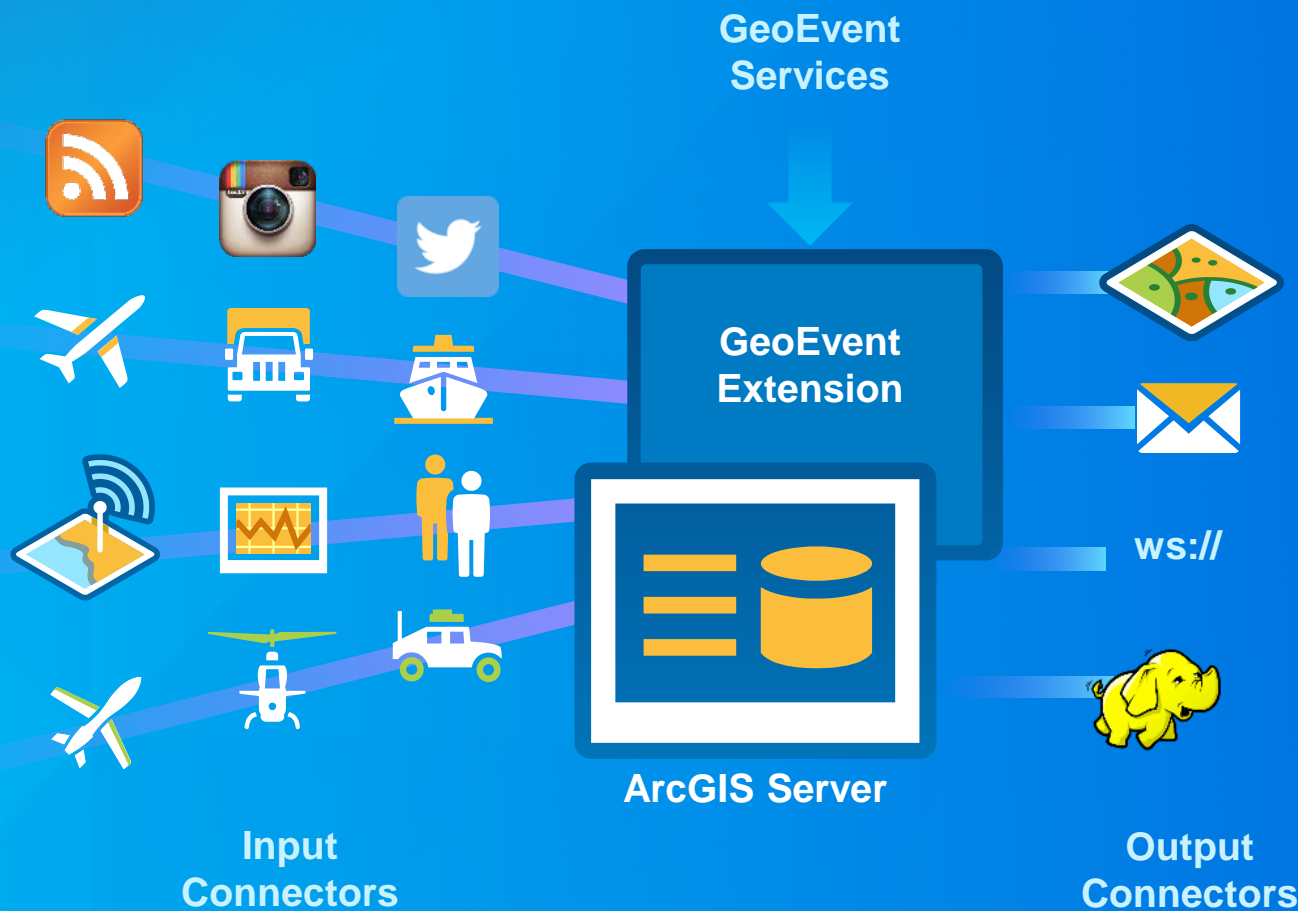
Portal Logging

ArcGIS for Server Extensions

- **GeoEvent Extension updates**
- **Three new extensions:**
 1. **Esri Production Mapping for ArcGIS Server**
 2. **Esri Defense Mapping for ArcGIS Server**
 3. **ArcGIS for Maritime**



- Integrates real-time streaming data into ArcGIS
- Performs continuous processing and real-time analytics
- Sends updates and alerts to those who need it where they need it



GeoEvent Extension

Integrates and exploits real-time data



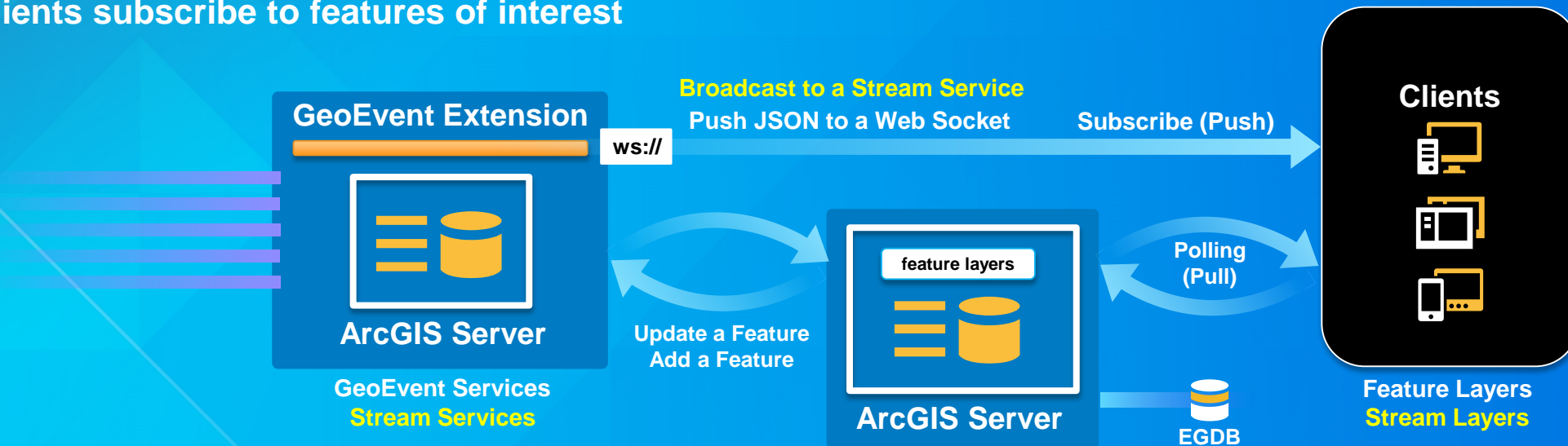
Sending Real-time Events to Clients

Patterns – pull and push

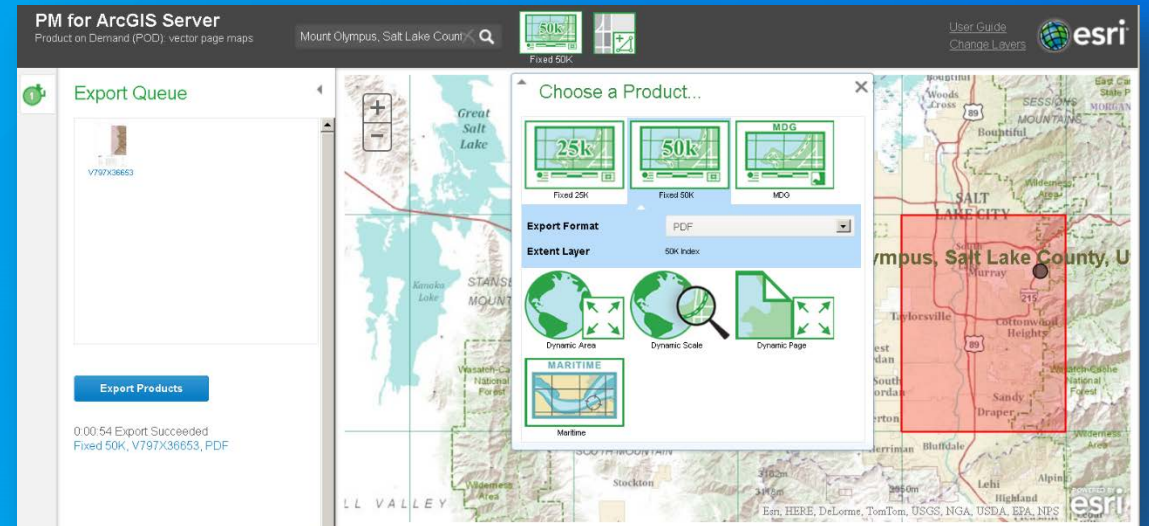
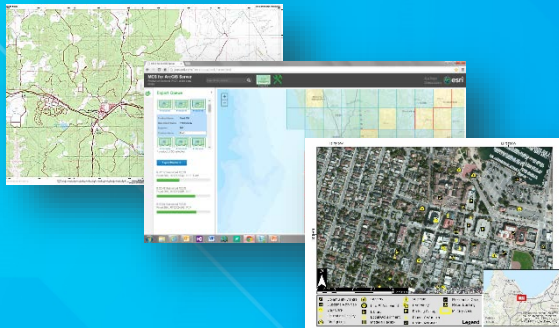
- **Pull from a Feature Service (10.2)**
 - Must be backed by a multi-user geodatabase (EGDB)
 - Clients poll to get updates – limited to approx. 300 events/sec
- **Push via Web Socket output (10.3)** —————>
 - Low latency, high throughput – roughly 3000 events/sec
 - Clients subscribe to features of interest

New **stream service** → ArcGIS Server

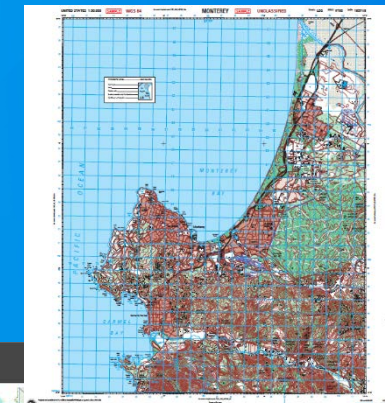
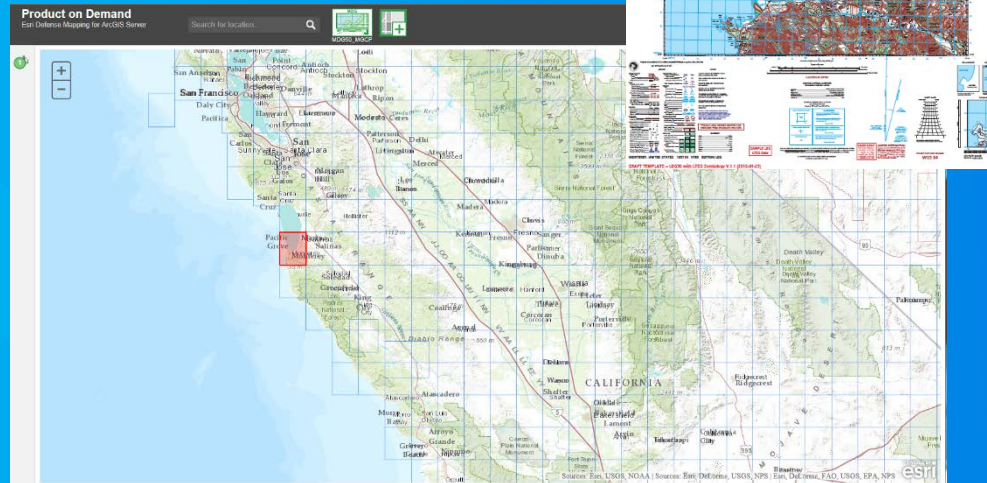
New **stream layer** → ArcGIS API for Javascript



- Create and download authoritative High Quality Cartographic Products
- Includes
 - Behavior-based cartographic calculators
 - Advanced custom print and export services
 - Collection of industry specific map surround elements
 - Geoprocessing and ArcPyProduction package
 - Starter web app



- Incorporating Defense Cartographic workflow
- Includes
 - MGCP Derived Graphic (MDG)
 - Joint Operations Graphic (JOG)
 - Extendable to custom products
 - *Points of Interest*
 - *Lines of Communication*
 - Applications



GP Services



Python Scripts

MXDs

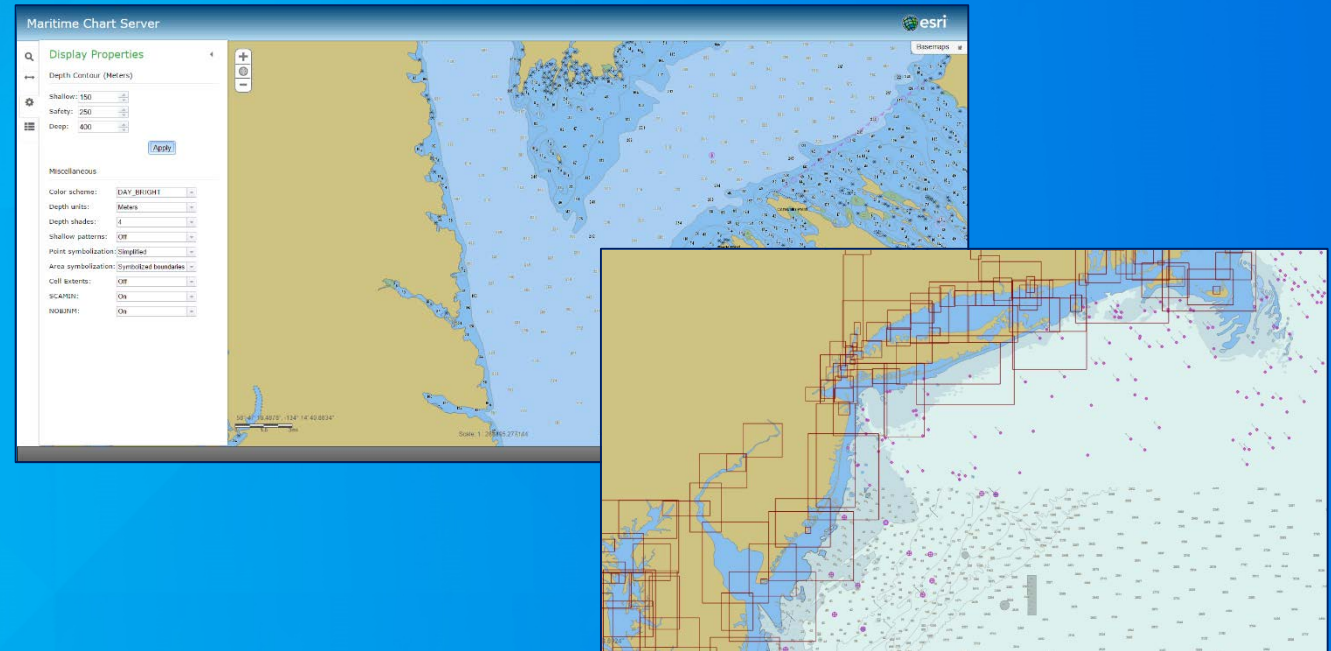


Data



Esri Defense Mapping for ArcGIS Server

- Share Nautical charts with everyone in the organization and the public
- Includes Maritime Chart Server (S-57 service for situational awareness)
- Server-side geoprocessing scripting and workflow automation



ArcGIS for Maritime extension

More information

- server.arcgis.com
- Find the What's New topics, Compatibility topic, Upgrade topics, and much more..



Understanding our world.