



ArcGIS for Water Utilities: An Introduction

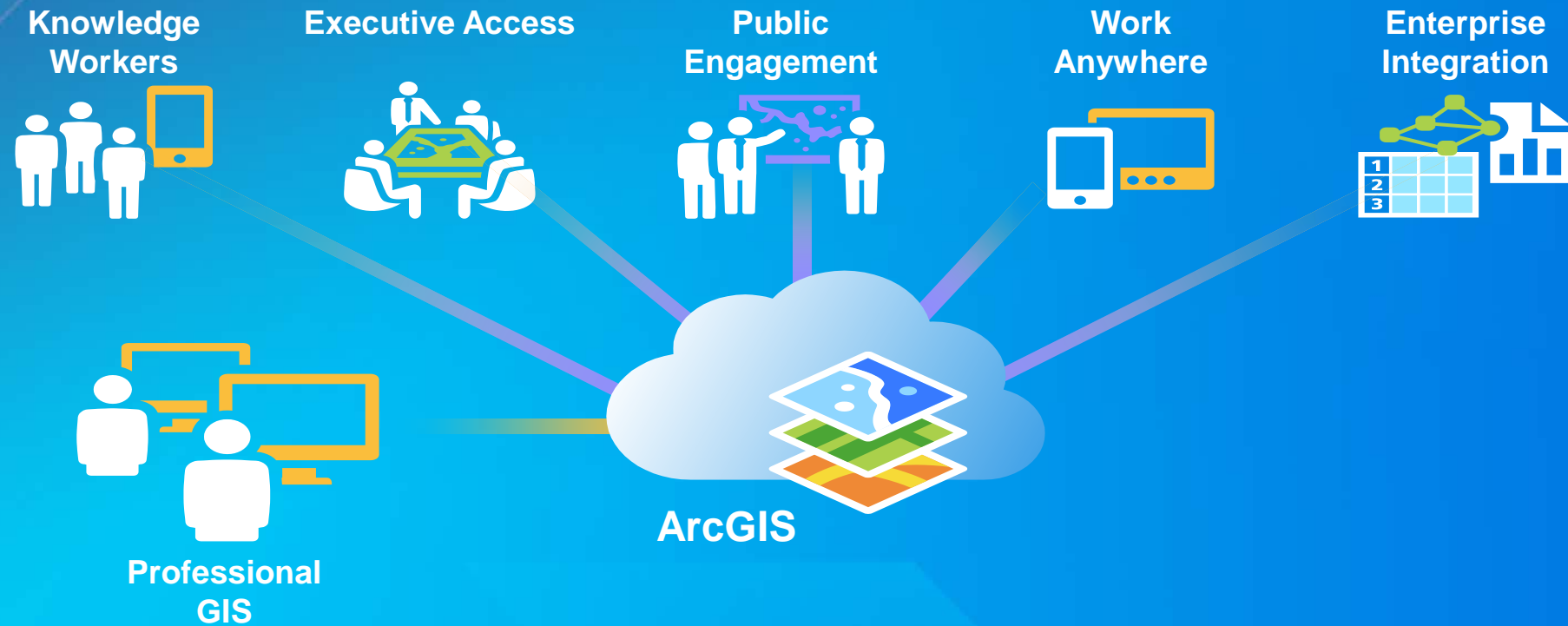
Jason Channin

Clare Price



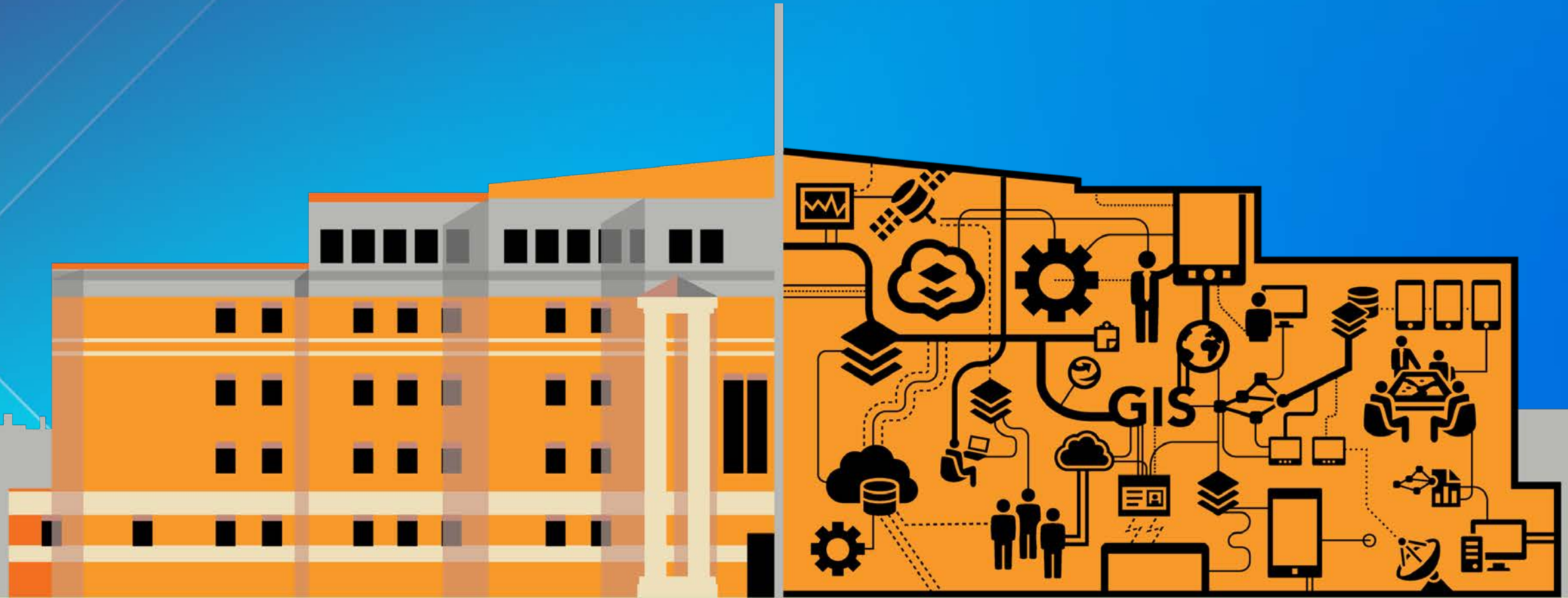


ArcGIS at an organization



ArcGIS: System of Record

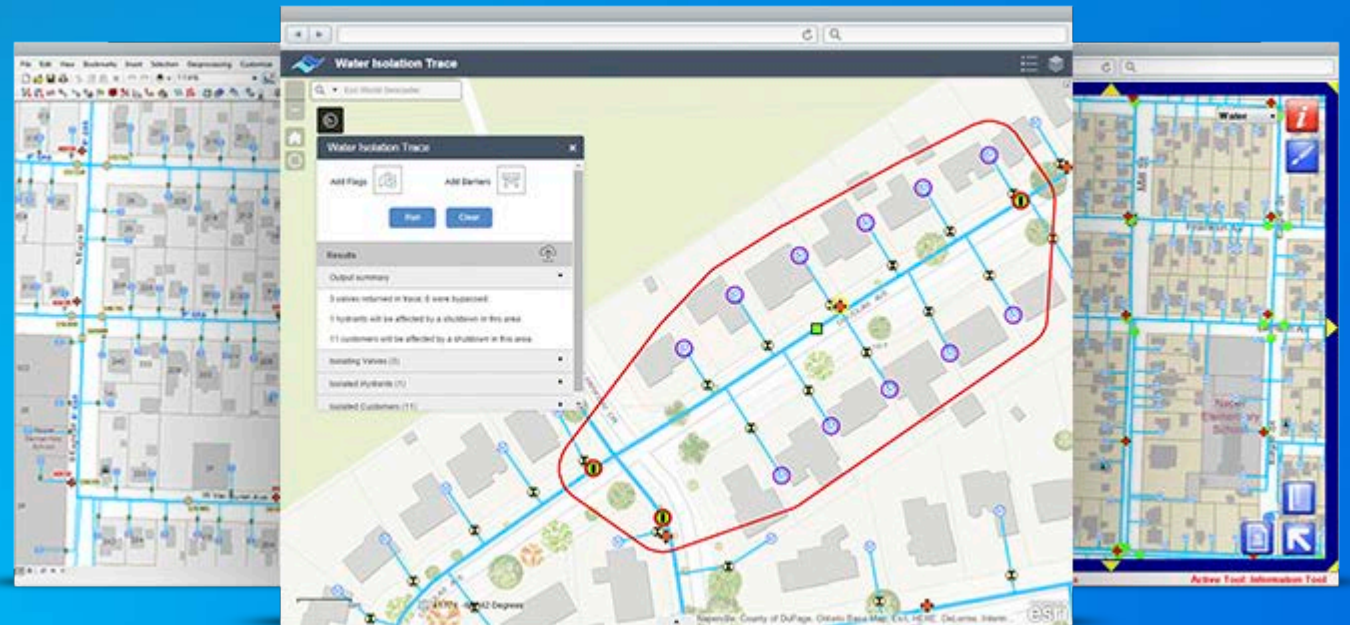
Organize and manage the geography of your assets and resources



ArcGIS for Water Utilities

Configures the ArcGIS Platform for water, sewer, and stormwater workflows

- Freely available
- Fully supported by Esri
- Continues to be developed
- Maintained by Esri
- Open sourced on GitHub



Implementing ArcGIS for Water Utilities

Five steps

1. **Understand and prioritize your business needs**
2. **Deploy the ArcGIS Platform**
3. **Configure your mapping portal**
4. **Configure initial apps**
5. **Iterate**

ArcGIS Platform

What is means to deploy the ArcGIS Platform





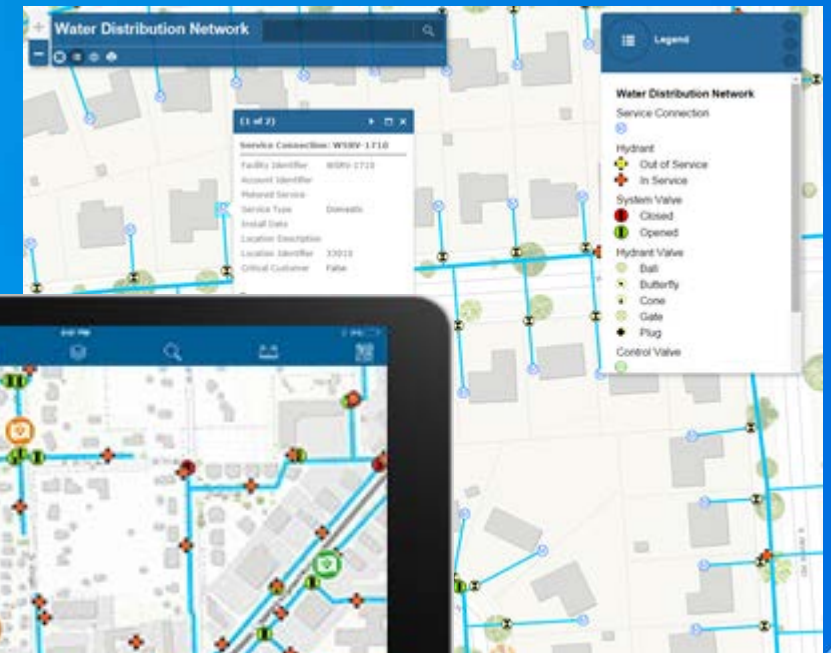
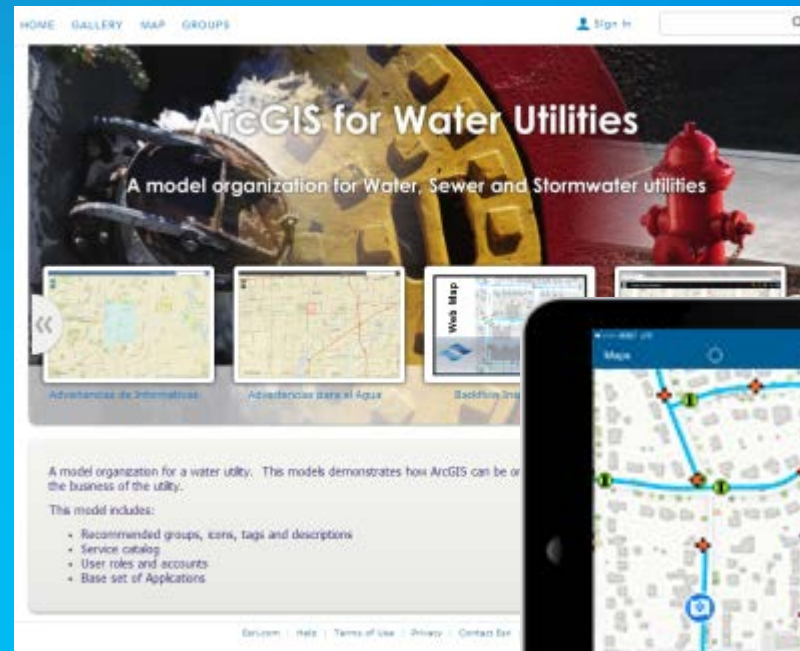
Building the foundation

Configuring your mapping portal

Building the foundation

Configuring your mapping portal

- Model Organization
- Network Viewers
- Map Change Request



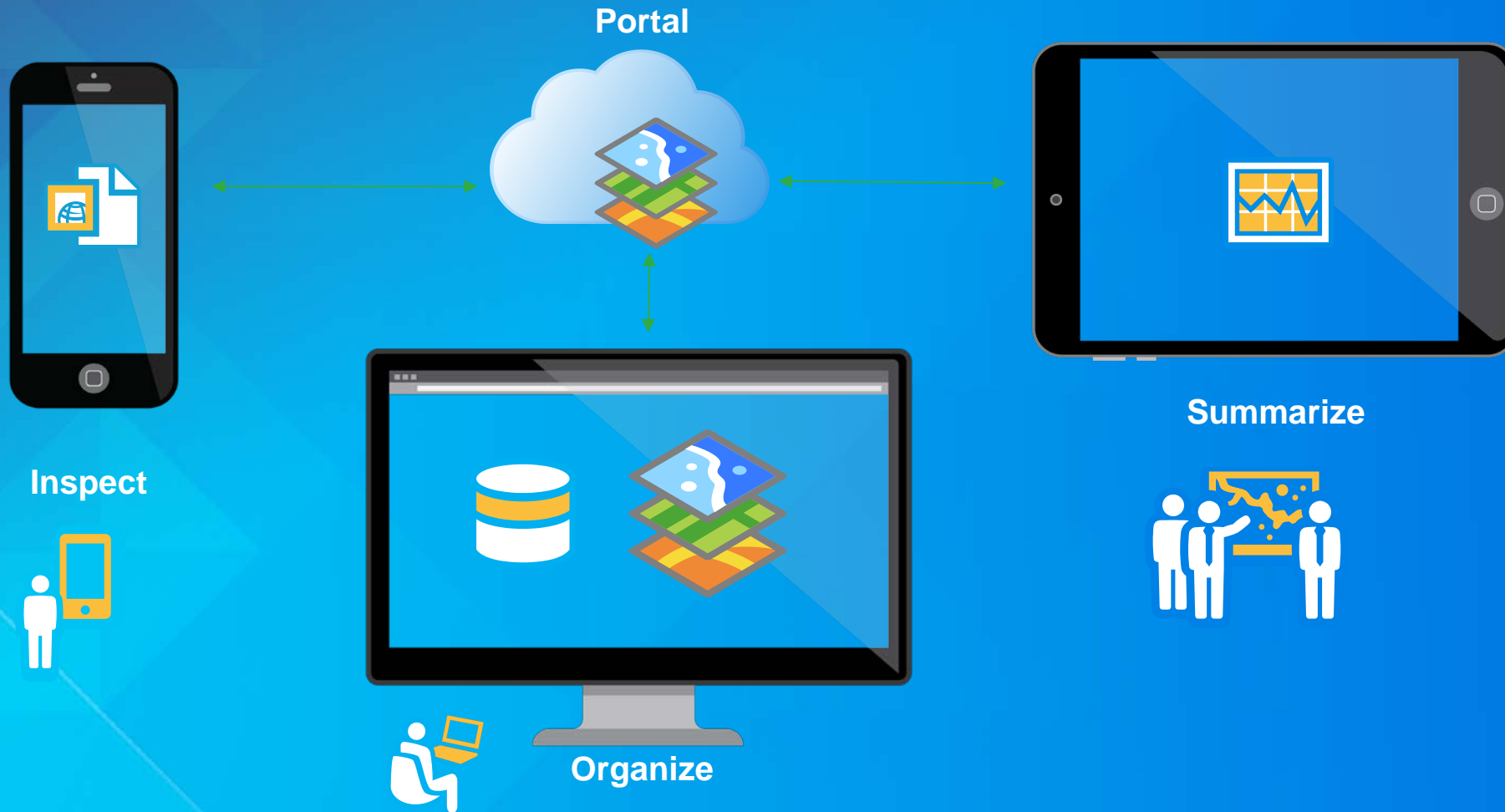


Taking maps to the field

Configure initial apps

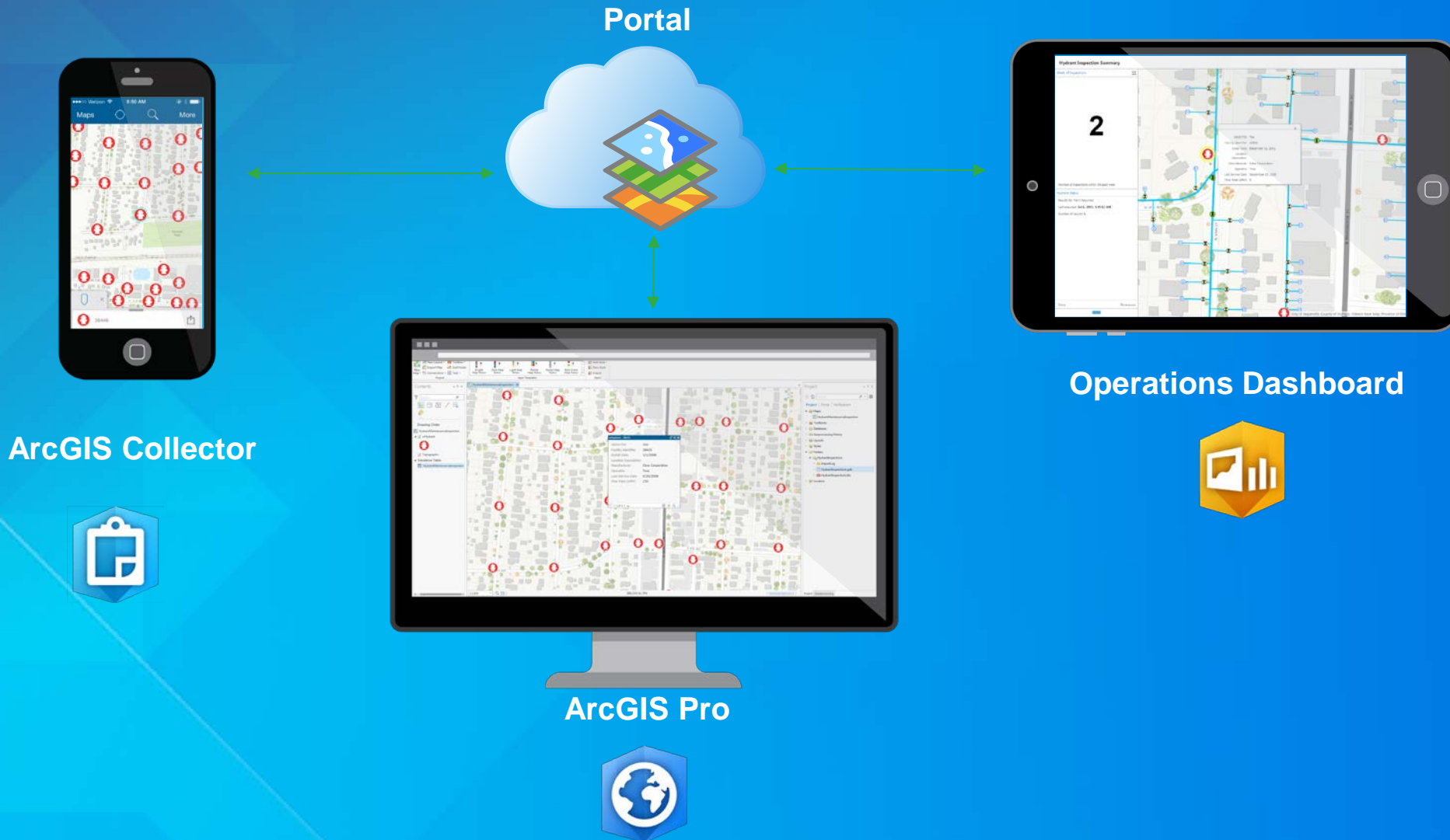
Utility Inspection Workflow

Organize, Inspect, Summarize



Hydrant Inspection Workflow

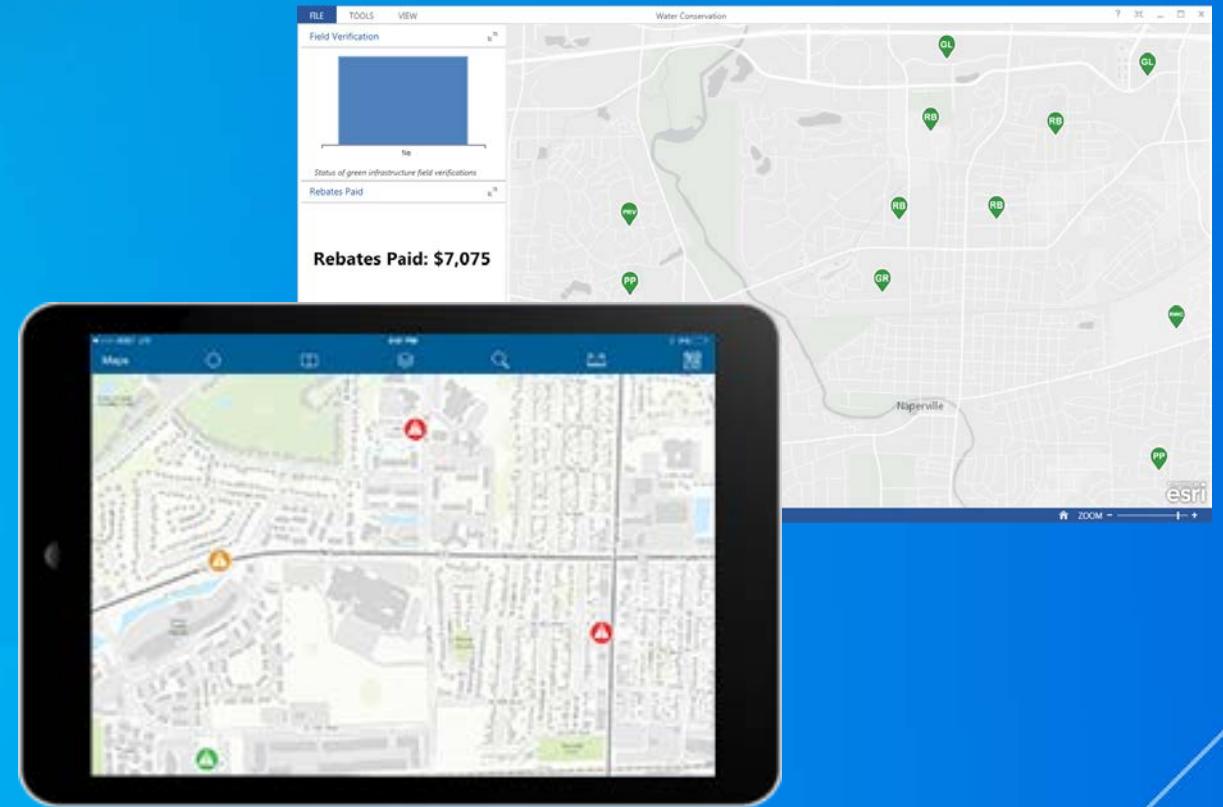
Organize, Inspect, Summarize



Taking maps to the field

Configure initial apps

- Inspection Solutions
- Other Data Collection



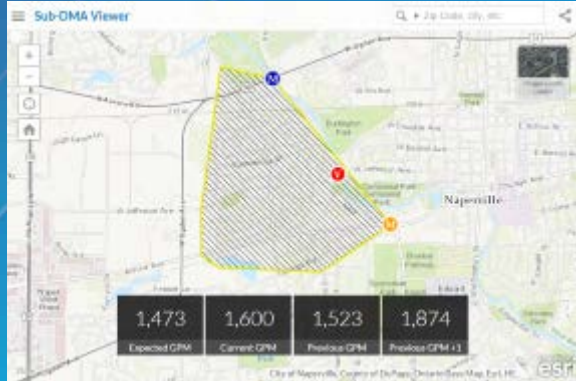


Empowering your utility

Iterate

Empowering your utility

Solutions you saw - available today



Nighttime Flow Analysis



Leak Logger Analysis



Leak Investigator



Utility Isolation Trace



Public Outage Map

Resources

Available for you today



<http://solutions.arcgis.com>



<http://esri.github.com>



ArcGISTeamUtilities@esri.com



Live Training Seminar –
Utility Asset Inspection Using ArcGIS

The image shows two overlapping screenshots. The top one is a GitHub announcement for Esri, titled "Esri is on GitHub!". It includes a "BROWSE ON GITHUB" button and a search bar with "Water" entered. The bottom screenshot is the "ArcGIS for Water Utilities" website. It features a navigation menu with "PLATFORM", "FEATURES", "DOCUMENTATION", and "SUPPORT". The main content area includes a "Get Started" section with a "GET STARTED" button, an "Online Mapping Platform" section with a "LEARN MORE" button, and a "From our Blog" section with a post titled "Be An Excel Ninja with ArcGIS Data Enrichment". There are also sections for "Foundational Solutions" and "Maintain Utility Assets", each with a "Learn More" button. A sidebar on the right contains a "lookup" section with a description: "that is used to determine if ed intersects a polygon".

ArcGIS for Water Utilities at the UC

Available for you today

- **Demo Theaters**
 - The ArcGIS Platform for Water Enterprise (Tues 1:30, Wed 1:30, Thurs 10:30)
 - Configuring Attribute Assistant (Wed 12:30)
 - Improving Quality of Utility Maps (Thurs 11:30)
- **Special Interest Groups**
 - CA/NV AWWA (Tues 12:00)
 - Water/Wastewater Meeting (Wed 12:00)
- **Solutions Expo**

The background features a vibrant blue gradient. On the left side, there are several overlapping geometric shapes: a large purple triangle pointing upwards, a yellow triangle pointing downwards, and a dark purple triangle pointing downwards. The yellow triangle contains a faint, light-colored map of a region, possibly a state or county. The overall design is modern and abstract.

Questions?



Understanding our world.